

Архангельск (8182)63-90-72
Астана (7172)727-132
Астрахань (8512)99-46-04
Барнаул (3852)73-04-60
Белгород (4722)40-23-64
Брянск (4832)59-03-52
Владивосток (423)249-28-31
Волгоград (844)278-03-48
Вологда (8172)26-41-59
Воронеж (473)204-51-73
Екатеринбург (343)384-55-89
Иваново (4932)77-34-06

Ижевск (3412)26-03-58
Иркутск (395)279-98-46
Казань (843)206-01-48
Калининград (4012)72-03-81
Калуга (4842)92-23-67
Кемерово (3842)65-04-62
Киров (8332)68-02-04
Краснодар (861)203-40-90
Красноярск (391)204-63-61
Курск (4712)77-13-04
Липецк (4742)52-20-81

Киргизия (996)312-96-26-47

Магнитогорск (3519)55-03-13
Москва (495)268-04-70
Мурманск (8152)59-64-93
Набережные Челны (8552)20-53-41
Нижний Новгород (831)429-08-12
Новокузнецк (3843)20-46-81
Новосибирск (383)227-86-73
Омск (3812)21-46-40
Орел (4862)44-53-42
Оренбург (3532)37-68-04
Пенза (8412)22-31-16

Россия (495)268-04-70

Пермь (342)205-81-47
Ростов-на-Дону (863)308-18-15
Рязань (4912)46-61-64
Самара (846)206-03-16
Санкт-Петербург (812)309-46-40
Саратов (845)249-38-78
Севастополь (8692)22-31-93
Симферополь (3652)67-13-56
Смоленск (4812)29-41-54
Сочи (862)225-72-31
Ставрополь (8652)20-65-13

Казахстан (772)734-952-31

Сургут (3462)77-98-35
Тверь (4822)63-31-35
Томск (3822)98-41-53
Тула (4872)74-02-29
Тюмень (3452)66-21-18
Ульяновск (8422)24-23-59
Уфа (347)229-48-12
Хабаровск (4212)92-98-04
Челябинск (351)202-03-61
Череповец (8202)49-02-64
Ярославль (4852)69-52-93

www.panblast.nt-rt.ru | | pav@nt-rt.ru

Технические характеристики на дробеструйные шкафы для взрывоопасных работ, пластиковые КОМПАНИИ **PanBlast**



PB1000PMB Blast Cabinets



Product Features

The PanBlast™ PB1000PMB Blast Cabinets is a highly efficient, industrial blast cabinet, designed for use with plastic blasting media.

- ▶ Specially designed dump valve allows blasting pressures as low as 5 psi (35 kPa).
- ▶ Optional magnetic grid separator removes ferrous contaminants from the plastic media.
- ▶ PanBlast™ 28 litres (1 ft³) blast pot with 60° cone for smooth abrasive flow.
- ▶ Cyclone type abrasive separator cleans abrasive during use.
- ▶ Safety door interlock.
- ▶ Integral dry cartridge reverse pulse dust collector maintains visibility.
- ▶ Heavy duty wear resistant rubber gloves.
- ▶ Quick-change laminated glass viewing window – no tools required.
- ▶ Fina II abrasive metering valve.
- ▶ Compressed air regulator and gauge.
- ▶ Standard air blow down gun.

Common Applications

- ▶ De-scale and de-rust soft surfaces.
- ▶ Remove coatings without damaging substrate.
- ▶ De-burr, de-flash and clean delicate surfaces.
- ▶ Removal of release agents and contamination from moulds.

Complementary Products



ATN-S Blast Nozzles



ABN-S Blast Nozzles



ATN-M Blast Nozzles



AER85 Vacuum Blaster



Pow Air Vac



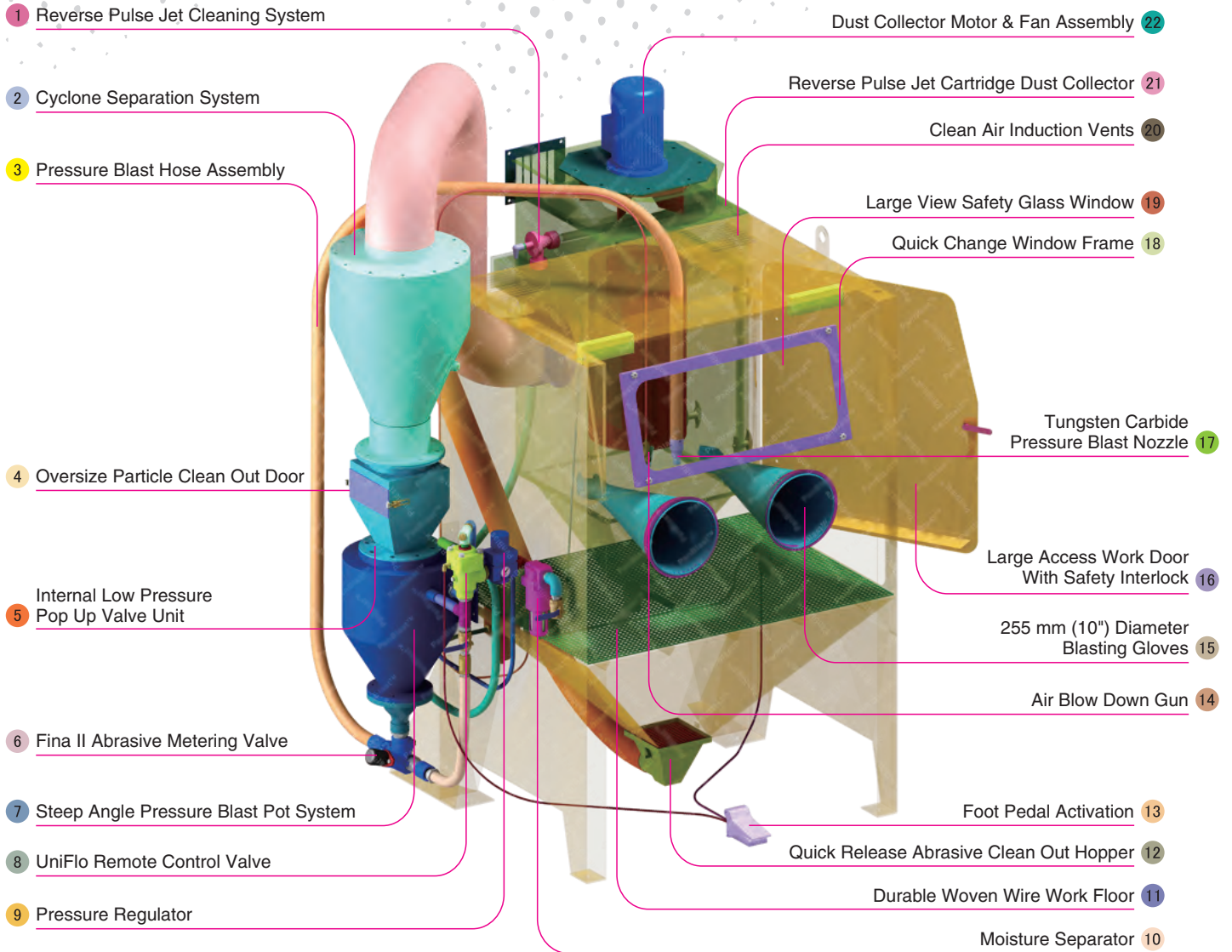
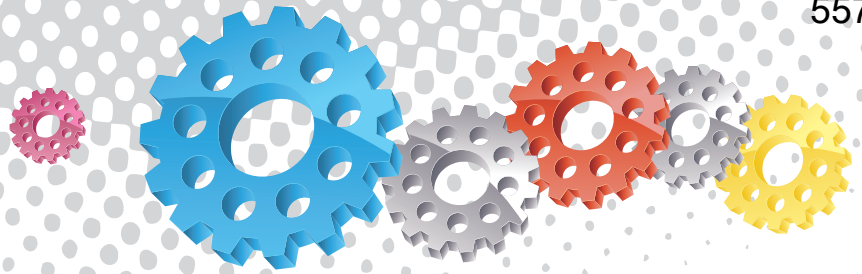
Filter Cartridge



Moisture Separator



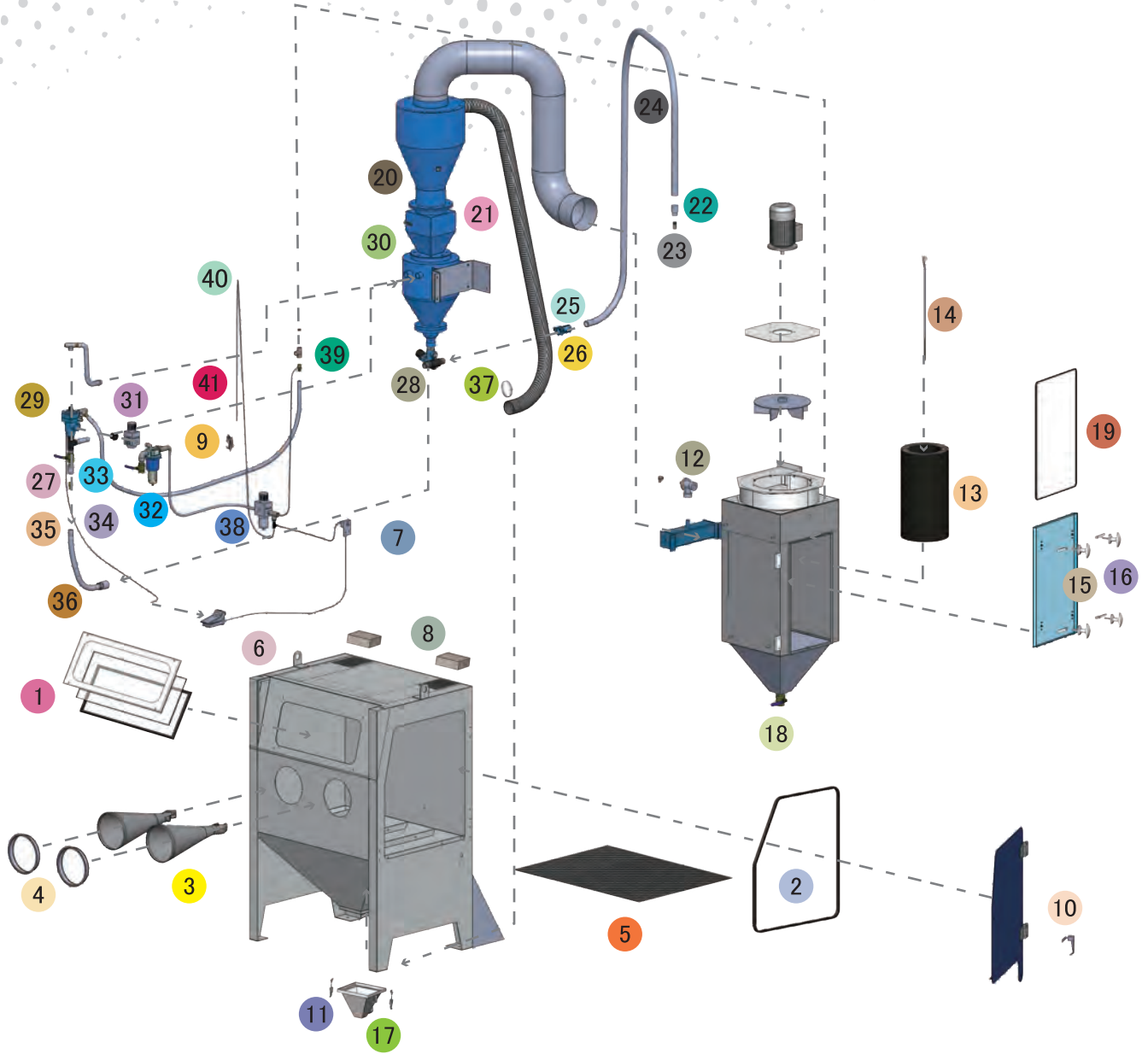
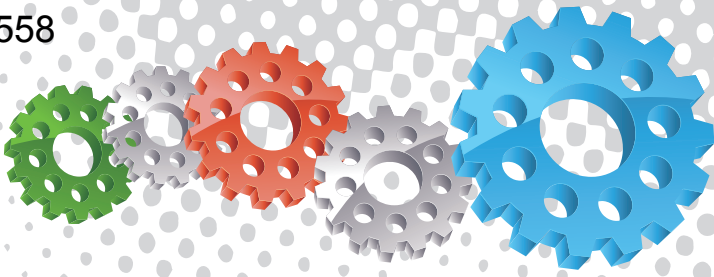
Cabinet Window Cover



Component Highlights



- | | | |
|---|---|---|
| 1 Reverse Pulse Jet Cleaning System | 9 Pressure Regulator | 17 Tungsten Carbide Pressure Blast Nozzle |
| 2 Cyclone Separation System | 10 Moisture Separator | 18 Quick Change Window Frame |
| 3 Pressure Blast Hose Assembly | 11 Durable Woven Wire Work Floor | 19 Large View Safety Glass Window |
| 4 Oversize Particle Clean Out Door | 12 Quick Release Abrasive Clean Out Hopper | 20 Clean Air Induction Vents |
| 5 Internal Low Pressure Pop Up Valve Unit | 13 Foot Pedal Activation | 21 Reverse Pulse Jet Cartridge Dust Collector |
| 6 Fina II Abrasive Metering Valve | 14 Air Blow Down Gun | 22 Dust Collector Motor & Fan Assembly |
| 7 Steep Angle Pressure Blast Pot System | 15 255 mm (10") Diameter Blasting Gloves | |
| 8 UniFlo Remote Control Valve | 16 Large Access Work Door With Safety Interlock | |



Notation: AU: Approved by Worksafe, Australia.

Assemblies

Stock Code	Description	Weight
BEC-CA-PB-0005	PB1000PMB/AU LP Pressure Blast Cabinet Assembly	650 kg (1433 lbs)
BEC-CA-0570-00	PB1000PMB/AU HP Pressure Blast Cabinet Assembly	650 kg (1433 lbs)

Optional Accessories

Stock Code	Description	Stock Code	Description
BAC-CA-PB-0180	PB1000 Cabinet Track & Turntable	BAC-CA-PB-0040	Tumble Basket Assembly - 300 mm Dia
BAC-CA-PB-0244	PB1000/1500/2000 Turntable Kit	BAC-CA-PB-0455	Foot Valve Guard
BAC-CA-PB-0277	Cabinet Gun Stand	BAC-CA-PB-0292	Operator Sound Kit
BAC-CA-PB-0241	Silencer Kit	BAC-CA-PB-0278	PB1000 Linning Kit
BAC-CA-PB-0243	Tumble Basket Assembly - 350 mm Dia	BAC-DC-0002-01	230V 1-Cartridge Auto-Reverse Pulse Kit
BAC-CA-PB-0287	Magnetic Grid Kit		

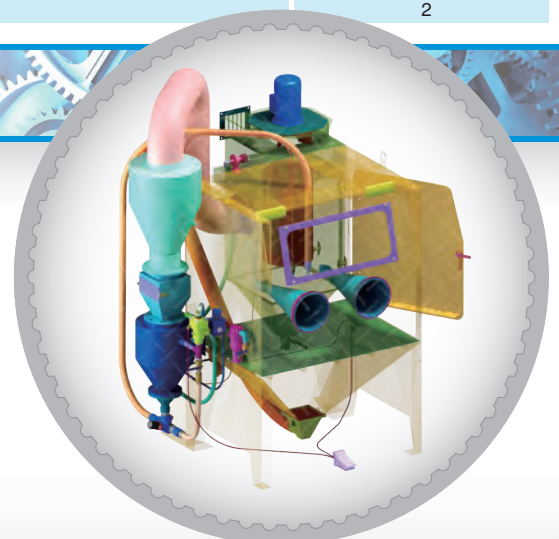
Parts List

Item	Stock Code	Description	Qty
1	BAC-CA-PB-0137	Rectangular Window	1
2	BAC-CA-PB-0178	Cabinet Door Seal	1
3	BAC-GL-PB-0003	10" Ø Cabinet Rubber Gloves	1 pr
4	BAC-CA-PB-0157	Cabinet Entry Ring	2
5	BAC-CA-PB-0126	Cabinet Floor Mesh	1
6	BAC-CA-PB-0086	Foot Valve Spring Return	1
7	YAC-CA-PB-0219	Door Interlock Valve	1
8	BAC-CA-PB-0140	Air Entry Filter	2
9	YAC-CA-PB-0145	1/4" Blow Off Gun	1
10	YAC-CA-PB-0138	Latch	1
11	YAC-FN-PB-0041	Toggle Catch	4
12	BAC-DC-PB-0007	Pulse Valve	1
13	BAC-DF-PB-0002	Filter Cartridge - Size 2 (Open/Close)	1
14	BAC-DC-PB-0031	Hanger Rod	1
15	YAC-CA-PB-0146	Handle	4
16	YAC-CA-PB-0205	Handle Tongue	4
17	BAC-CA-PB-0117	PB500/PB1000 Hopper-Screen Detail	1
18	BAC-PF-PB-0008	38 mm (1-1/2") Ball Valve	1
19	BAC-CA-PB-0406	Dust Collector Door Seal	1
20	BAC-CA-PB-0433	PB1000PMB Rubber Lined Cyclone	1
21	BAC-CA-0597-00	Recovery Hose	1
22	BAC-NZ-PB-0025	ANH-1/2 Aluminium Nozzle Holder	1
23	BAC-NZ-PB-0054	Blast Nozzle ATN-3S Alum/Tungsten Short	1
24	BAC-CA-0592-00	Blast Hose	1
25	BAC-HC-PB-0057	NTC-1/2 Nylon Threaded Pot Coupling	1
26	BAC-HC-PB-0054	NHC-1/2 Nylon Hose Coupling	1
27	BAC-PF-PB-0005	19 mm (3/4") Non Return Valve	1
28	BAC-VA-0397-00	Fina II Valve 1/2"M X 3/4"F	1
29	BAC-RC-PB-0014	Uniflo Valve Assembly With Fittings	1
30	YAC-BF-0355-00	Air Spring Valve Assembly	1
31	BAC-AF-PB-0153	19 mm (3/4") Pressure Regulator With Gauge	1
32	BAC-AF-PB-0057	19 mm (3/4") Port Moisture Separator	1
33	BAC-PF-PB-0004	19 mm (3/4") Ball Valve	2
34	YAC-PF-PB-0059	Hose Barb	2
35	YAC-FN-PB-0242	Hose Clamp	5
36	BAC-HB-PB-0002	Blast Hose 19 mm x 34 mm x 20 mm L2	2.5 m
37	YAC-FN-PB-0117	Hose Clamp	2
38	BAC-AF-PB-0048	9.5 mm (3/8") Filter Regulator With Gauge	1
39	YAC-PF-PB-0186	KC Nipple	1
40	YAC-PF-PB-0125	1/4" NB Air Hose	1.5 m
41	YAC-FN-PB-0263	O-Clip	2

Technical Data

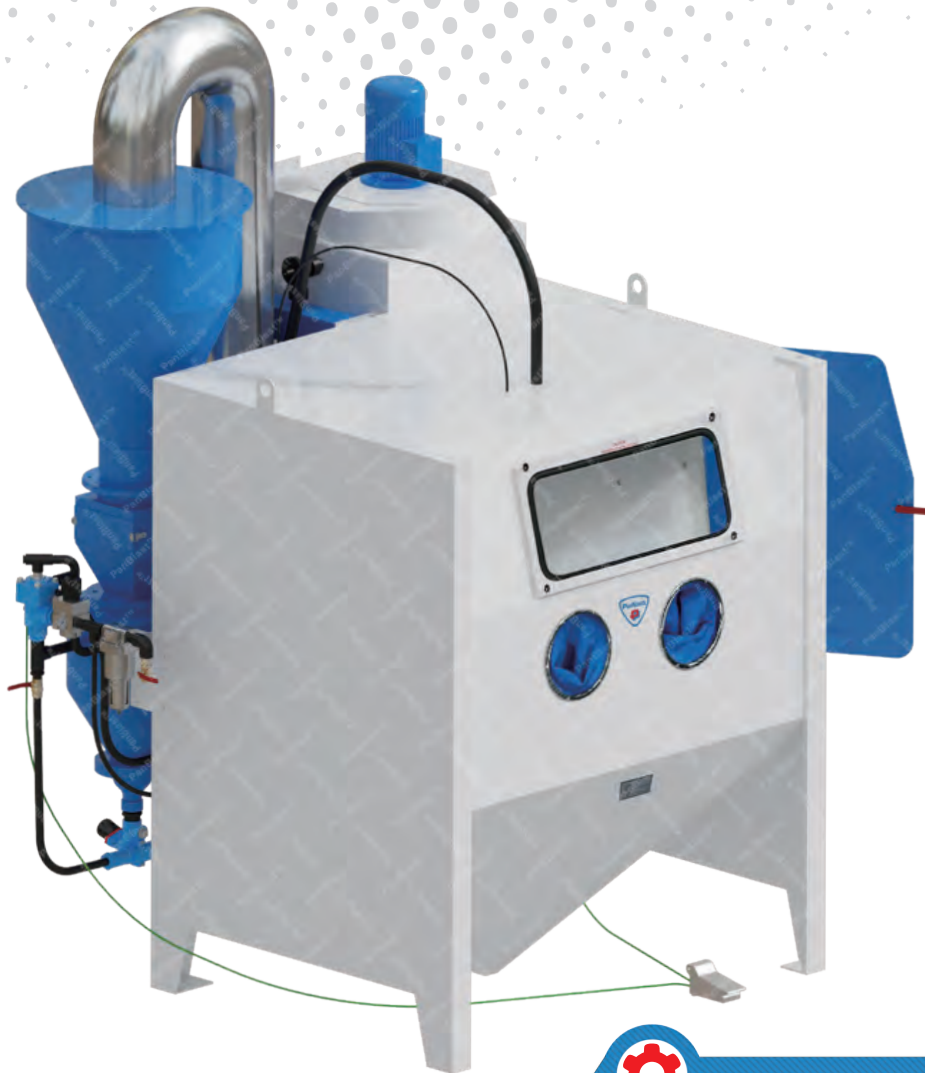


- Optional Turntable Load:**
 250 kg (551 lbs)
- Internal Size:**
 1100 mm (43") Wide 920 mm (36") Deep
 890 mm (35") High
- Door Size:**
 755 mm (30") Wide 855 mm (34") High
- Air Consumption:**
 85 m³/hr (50 cfm) @550kPa (80 psi)
- Blast Nozzle Size:**
 BAC-NZ-PB-0054
 Nozzle ATN-3S Orifice 3/16" - 4.8 mm
- Cabinet Light:**
 2 x 18Watt 230V 50Hz
- Cabinet Overall Dimension:**
 1820 mm (72") Wide 1573 mm (62") Deep
 2450 mm (97") High
- Recommended Floor Area:**
 3400 mm (134") Wide 2400 mm (95") Deep
- Window Size:**
 750 mm (30") Wide 300 mm (12") High
- Air Supply Line:**
 19 mm (3/4")
- Electrical Power:**
 1.5Kw (2hp) 415VAC 50Hz 2 Pole 3 Phase





PB1500PMB Blast Cabinets



Product Features

The PanBlast™ PB1500PMB Blast Cabinet is a highly efficient, industrial blast cabinet, designed for use with plastic blasting media.

- ▶ Specially designed dump valve allows blasting pressures as low as 5 psi (35 kPa).
- ▶ Optional magnetic grid separator removes ferrous contaminants from the plastic media.
- ▶ PanBlast™ 28 litres (1 ft³) blast pot with 60° cone for smooth abrasive flow.
- ▶ Cyclone type abrasive separator cleans abrasive during use.
- ▶ Safety door interlock.
- ▶ Integral dry cartridge reverse pulse dust collector maintains visibility.
- ▶ Heavy duty wear resistant rubber gloves.
- ▶ Quick-change laminated glass viewing window - no tools required.
- ▶ Fina II abrasive metering valve.
- ▶ Compressed air regulator and gauge.
- ▶ Standard air blow down gun.

Common Applications

- ▶ De-scale and de-rust soft surfaces.
- ▶ Remove coatings without damaging substrate.
- ▶ De-burr, de-flash and clean delicate surfaces.
- ▶ Removal of release agents and contamination from moulds.

Complementary Products



ATN-S Blast Nozzles



ABN-S Blast Nozzles



ATN-M Blast Nozzles



AER85 Vacuum Blaster



Pow Air Vac



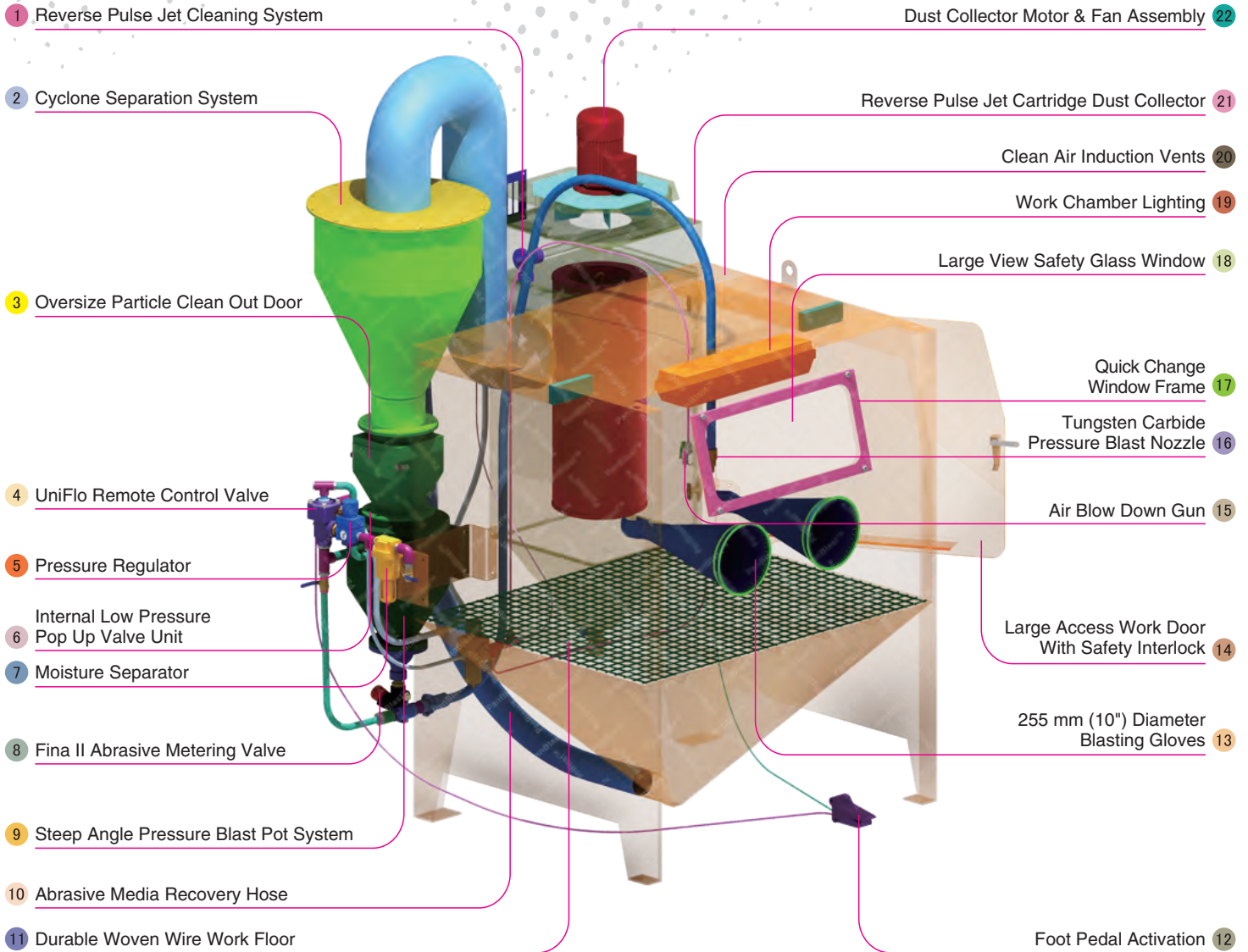
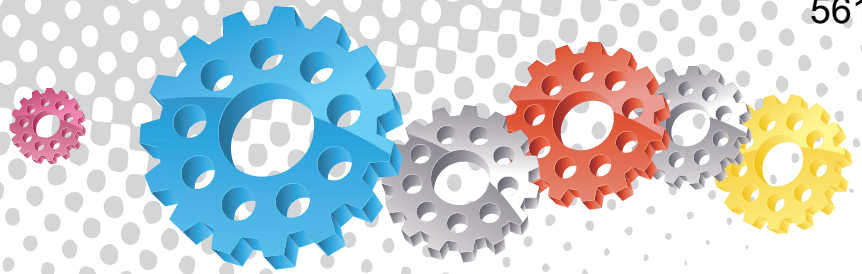
Filter Cartridge



Moisture Separator



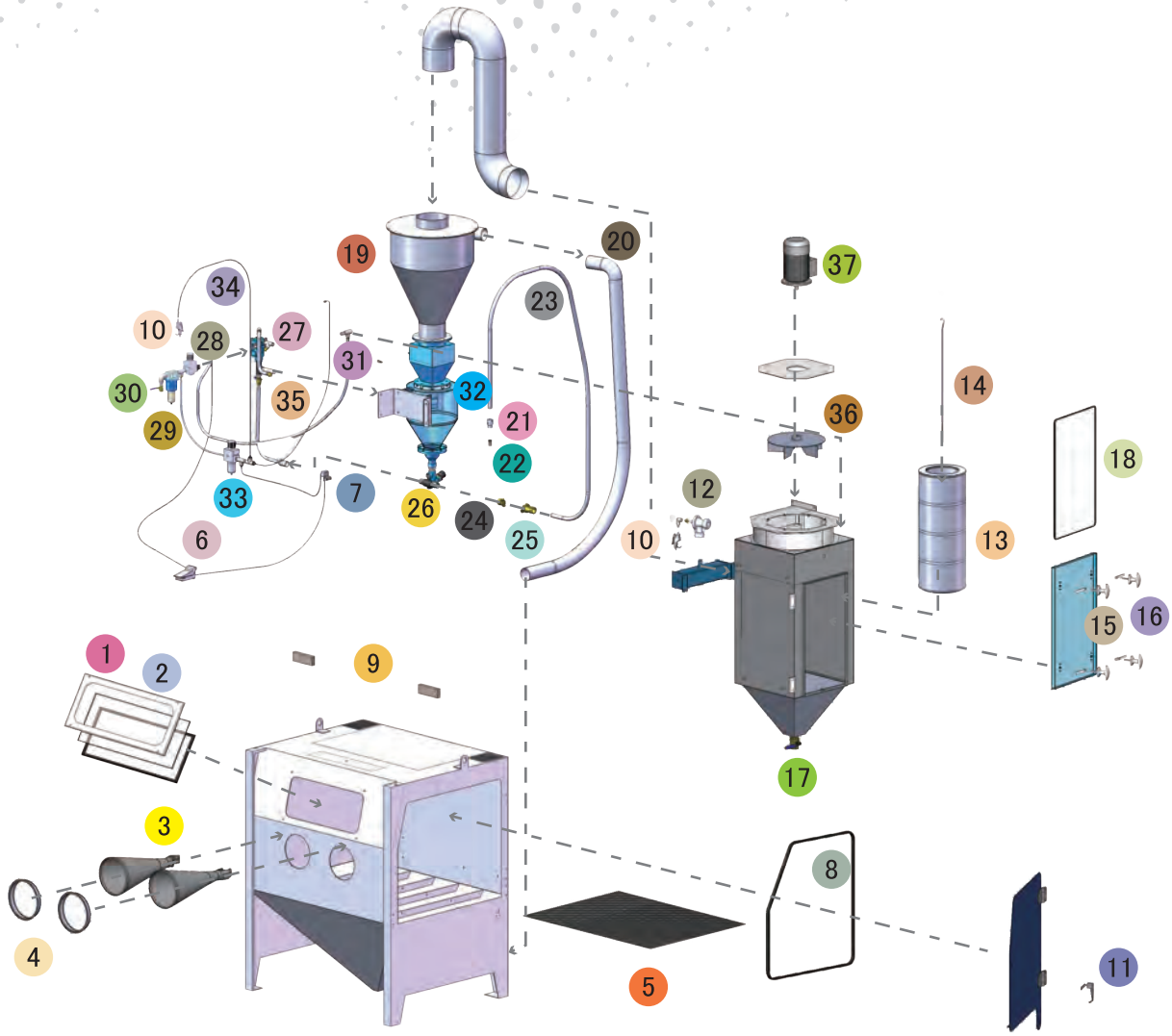
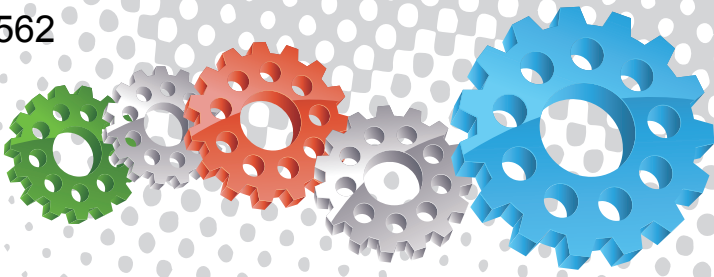
Cabinet Window Cover



Component Highlights



- | | | |
|---|---|---|
| 1 Reverse Pulse Jet Cleaning System | 9 Steep Angle Pressure Blast Pot System | 17 Quick Change Window Frame |
| 2 Cyclone Separation System | 10 Abrasive Media Recovery Hose | 18 Large View Safety Glass Window |
| 3 Oversize Particle Clean Out Door | 11 Durable Woven Wire Work Floor | 19 Work Chamber Lighting |
| 4 UniFlo Remote Control Valve | 12 Foot Pedal Activation | 20 Clean Air Induction Vents |
| 5 Pressure Regulator | 13 255 mm (10") Diameter Blasting Gloves | 21 Reverse Pulse Jet Cartridge Dust Collector |
| 6 Internal Low Pressure Pop Up Valve Unit | 14 Large Access Work Door With Safety Interlock | 22 Dust Collector Motor & Fan Assembly |
| 7 Moisture Separator | 15 Air Blow Down Gun | |
| 8 Fina II Abrasive Metering Valve | 16 Tungsten Carbide Pressure Blast Nozzle | |



Notation: AU: Approved by Worksafe, Australia.

Assemblies

Stock Code	Description	Weight
BEC-CA-PB-0011	PB1500PMB/AU LP Pressure Blast Cabinet Assembly	750 kg (1654 lbs)
BEC-CA-PB-0010	PB1500PMB/AU HP Pressure Blast Cabinet Assembly	750 kg (1654 lbs)

Optional Accessories

Stock Code	Description	Stock Code	Description
BAC-CA-PB-0212	PB1500 Track & Turntable	BAC-CA-PB-0455	Foot Valve Guard
BAC-CA-PB-0243	Tumble Basket Assembly - 350 mm Dia	BAC-CA-PB-0292	Operator Sound Kit
BAC-CA-PB-0040	Tumble Basket Assembly - 300 mm Dia	BAC-CA-PB-0241	Silencer Kit
BAC-CA-PB-0244	PB1000/1500/2000 Turntable Kit	BAC-CA-PB-0279	PB1500 Linning Kit
BAC-CA-PB-0277	Cabinet Gun Stand	BAC-DC-0002-01	230V 1-Cartridge Auto-Reverse Pulse Kit
BAC-CA-PB-0287	Magnetic Grid Kit		

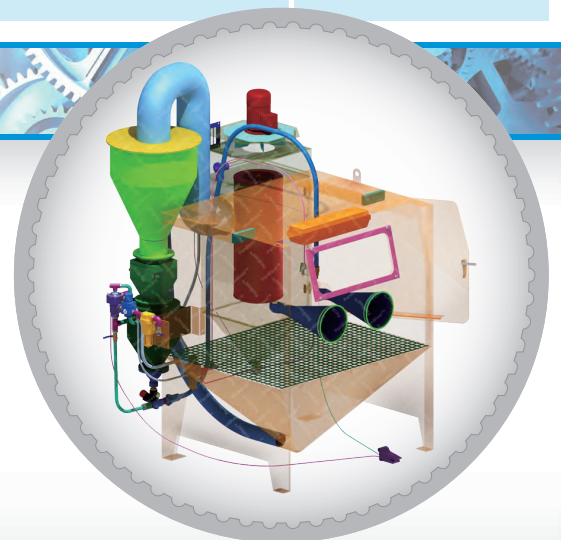
Parts List

Item	Stock Code	Description	Qty
1	BAC-CA-PB-0137	Rectangular Window	1
2	BAC-CA-PB-0141	Cabinet Window Seal	2
3	BAC-GL-PB-0003	10" Ø Cabinet Rubber Gloves	1 pr
4	BAC-CA-PB-0157	Cabinet Entry Ring	2
5	BAC-CA-0623-00	Cabinet Floor Mesh	1
6	BAC-CA-PB-0086	Foot Valve Spring Return	1
7	YAC-CA-PB-0219	Door Interlock Valve	1
8	BAC-CA-PB-0319	Cabinet Door Seal	1
9	BAC-CA-PB-0140	Air Entry Filter	2
10	YAC-CA-PB-0145	1/4" Blow Off Gun	2
11	YAC-CA-PB-0138	Latch	1
12	BAC-DC-PB-0007	Pulse Valve	1
13	BAC-DF-PB-0005	Filter Cartridge - Size 3 (Open/Close)	1
14	YAC-DC-PB-0033	920mm Hanger Rod	1
15	YAC-CA-PB-0146	Handle	4
16	YAC-CA-PB-0205	Handle Tongue	4
17	BAC-PF-PB-0008	38 mm (1-1/2") Ball Valve	1
18	BAC-CA-PB-0436	Dust Collector Jumbo Door Seal	1
19	BAC-CA-PB-0434	PB1500PMB Rubber Lined Cyclone	1
20	BAC-CA-0600-00	Recovery Hose	1
21	BAC-NZ-PB-0025	ANH 1/2 Aluminium Nozzle Holder	1
22	BAC-NZ-PB-0054	Blast Nozzle ATN-3S Alum/Tungsten Short	1
23	BAC-CA-0593-00	Blast Hose	1
24	BAC-HC-PB-0057	NTC-1/2 Nylon Threaded Pot Coupling	1
25	BAC-HC-PB-0054	NHC-1/2 Nylon Hose Coupling	1
26	BAC-VA-0397-00	Fina II Valve 1/2"M X 3/4"F	1
27	BAC-RC-PB-0086	UniFlo Remote Control Valve	1
28	BAC-AF-PB-0153	19 mm (3/4") Pressure Regulator With Gauge	1
29	BAC-AF-PB-0057	19 mm (3/4") Port Moisture Separator	1
30	BAC-PF-PB-0004	19 mm (3/4") Ball Valve	2
31	YAC-FN-0372-00	Female Star Knob	4
32	YAC-BF-0355-00	Air Spring Valve Assembly	1
33	BAC-AF-PB-0048	9.5 mm (3/8") Filter Regulator With Gauge	1
34	YAC-PF-PB-0125	1/4" NB Air Hose	4.5 m
35	BAC-HB-PB-0002	Blast Hose 19mm X 34mm X 20m L2	3 m
36	YAC-CA-PB-0183	Fan Impellor - 360CFM Aluminium	1
37	YAC-CA-PB-0144	1.5KW 415V/50HZ Motor	1

Technical Data



- Optional Turntable Load:**
 250 kg (551 lbs)
- Internal Size:**
 1400 mm (55") Wide 1180 mm (47") Deep
 1040 mm (41") High
- Door Size:**
 1055 mm (42") Wide 855 mm (34") High
- Air Consumption:**
 85 m³/hr (50 cfm) @550kPa (80 psi)
- Blast Nozzle Size:**
 BAC-NZ-PB-0054
 Nozzle ATN-3S Orifice 3/16" - 4.8 mm
- Cabinet Light:**
 2 x 36Watt 230V 50Hz
- Cabinet Overall Dimension:**
 1914 mm (76") Wide 1912 mm (76") Deep
 2738 mm (108") High
- Recommended Floor Area:**
 3700 mm (146") Wide 2700 mm (106") Deep
- Window Size:**
 750 mm (30") Wide 300 mm (12") High
- Air Supply Line:**
 19 mm (3/4")
- Electrical Power:**
 1.5Kw (2hp) 415VAC 50Hz 2 Pole 3 Phase



Архангельск (8182)63-90-72
Астана (7172)727-132
Астрахань (8512)99-46-04
Барнаул (3852)73-04-60
Белгород (4722)40-23-64
Брянск (4832)59-03-52
Владивосток (423)249-28-31
Волгоград (844)278-03-48
Вологда (8172)26-41-59
Воронеж (473)204-51-73
Екатеринбург (343)384-55-89
Иваново (4932)77-34-06

Ижевск (3412)26-03-58
Иркутск (395)279-98-46
Казань (843)206-01-48
Калининград (4012)72-03-81
Калуга (4842)92-23-67
Кемерово (3842)65-04-62
Киров (8332)68-02-04
Краснодар (861)203-40-90
Красноярск (391)204-63-61
Курск (4712)77-13-04
Липецк (4742)52-20-81

Киргизия (996)312-96-26-47

Магнитогорск (3519)55-03-13
Москва (495)268-04-70
Мурманск (8152)59-64-93
Набережные Челны (8552)20-53-41
Нижний Новгород (831)429-08-12
Новокузнецк (3843)20-46-81
Новосибирск (383)227-86-73
Омск (3812)21-46-40
Орел (4862)44-53-42
Оренбург (3532)37-68-04
Пенза (8412)22-31-16

Россия (495)268-04-70

Пермь (342)205-81-47
Ростов-на-Дону (863)308-18-15
Рязань (4912)46-61-64
Самара (846)206-03-16
Санкт-Петербург (812)309-46-40
Саратов (845)249-38-78
Севастополь (8692)22-31-93
Симферополь (3652)67-13-56
Смоленск (4812)29-41-54
Сочи (862)225-72-31
Ставрополь (8652)20-65-13

Казахстан (772)734-952-31

Сургут (3462)77-98-35
Тверь (4822)63-31-35
Томск (3822)98-41-53
Тула (4872)74-02-29
Тюмень (3452)66-21-18
Ульяновск (8422)24-23-59
Уфа (347)229-48-12
Хабаровск (4212)92-98-04
Челябинск (351)202-03-61
Череповец (8202)49-02-64
Ярославль (4852)69-52-93

www.panblast.nt-rt.ru | | pav@nt-rt.ru