

Архангельск (8182)63-90-72
Астана (7172)727-132
Астрахань (8512)99-46-04
Барнаул (3852)73-04-60
Белгород (4722)40-23-64
Брянск (4832)59-03-52
Владивосток (423)249-28-31
Волгоград (844)278-03-48
Вологда (8172)26-41-59
Воронеж (473)204-51-73
Екатеринбург (343)384-55-89
Иваново (4932)77-34-06

Ижевск (3412)26-03-58
Иркутск (395)279-98-46
Казань (843)206-01-48
Калининград (4012)72-03-81
Калуга (4842)92-23-67
Кемерово (3842)65-04-62
Киров (8332)68-02-04
Краснодар (861)203-40-90
Красноярск (391)204-63-61
Курск (4712)77-13-04
Липецк (4742)52-20-81

Киргизия (996)312-96-26-47

Магнитогорск (3519)55-03-13
Москва (495)268-04-70
Мурманск (8152)59-64-93
Набережные Челны (8552)20-53-41
Нижний Новгород (831)429-08-12
Новокузнецк (3843)20-46-81
Новосибирск (383)227-86-73
Омск (3812)21-46-40
Орел (4862)44-53-42
Оренбург (3532)37-68-04
Пенза (8412)22-31-16

Россия (495)268-04-70

Пермь (342)205-81-47
Ростов-на-Дону (863)308-18-15
Рязань (4912)46-61-64
Самара (846)206-03-16
Санкт-Петербург (812)309-46-40
Саратов (845)249-38-78
Севастополь (8692)22-31-93
Симферополь (3652)67-13-56
Смоленск (4812)29-41-54
Сочи (862)225-72-31
Ставрополь (8652)20-65-13

Казахстан (772)734-952-31

Сургут (3462)77-98-35
Тверь (4822)63-31-35
Томск (3822)98-41-53
Тула (4872)74-02-29
Тюмень (3452)66-21-18
Ульяновск (8422)24-23-59
Уфа (347)229-48-12
Хабаровск (4212)92-98-04
Челябинск (351)202-03-61
Череповец (8202)49-02-64
Ярославль (4852)69-52-93

www.panblast.nt-rt.ru | | pav@nt-rt.ru

Технические характеристики на дробеструйные шкафы напорные компании PanBlast



PB500P Blast Cabinets



Product Features

The PanBlast™ PB500P Heavy Duty Pressure Blast Cabinet is a highly efficient, general purpose, industrial blast cabinet, compatible with a wide range of abrasive media, including:

- * FastBlast™ Chilled Iron Grit
- * QuickCut™ Aluminium Oxide
- * EnviroGrit™ Garnet
- * PanaGrit™ Cast Steel Grit
- * BrightBlast™ Glass Beads
- * PanaShot™ Steel Shot

- ▶ Up to three times faster than suction blast systems.
- ▶ PanBlast™ 31 litres (1.1 ft³) blast pot.
- ▶ Cyclone type abrasive separator cleans abrasive during use.
- ▶ Safety door interlock.
- ▶ Integral dry cartridge reverse pulse dust collector for clear visibility.
- ▶ Heavy duty wear resistant rubber gloves.
- ▶ Quick-change laminated glass viewing window - no tools required.
- ▶ Fina II abrasive metering valve.
- ▶ Compressed air regulator and gauge.
- ▶ Standard air blow down gun.

Common Applications

- ▶ De-scale and de-rust metal.
- ▶ Remove paint and coatings.
- ▶ Remove burrs, flashings and sand from castings and moldings.
- ▶ Decorative finishing of non-ferrous metals.
- ▶ Stone and glass etching.
- ▶ Mold cleaning.

Complementary Products



ATN-S Blast Nozzles



ATN-M Blast Nozzles



Pow Air Vac



Moisture Separator



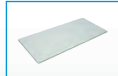
ABN-S Blast Nozzles



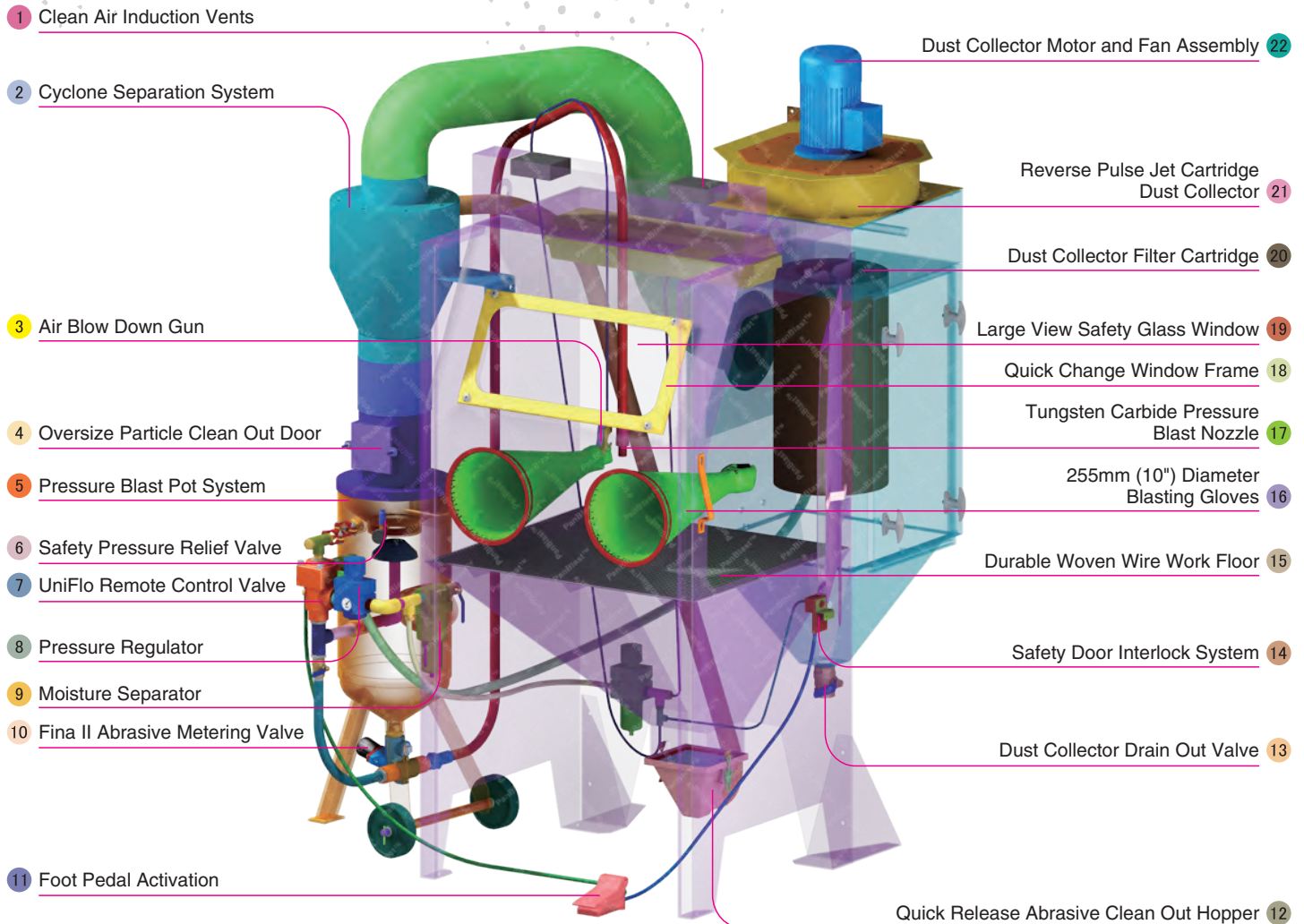
AER85 Vacuum Blaster



Filter Cartridge



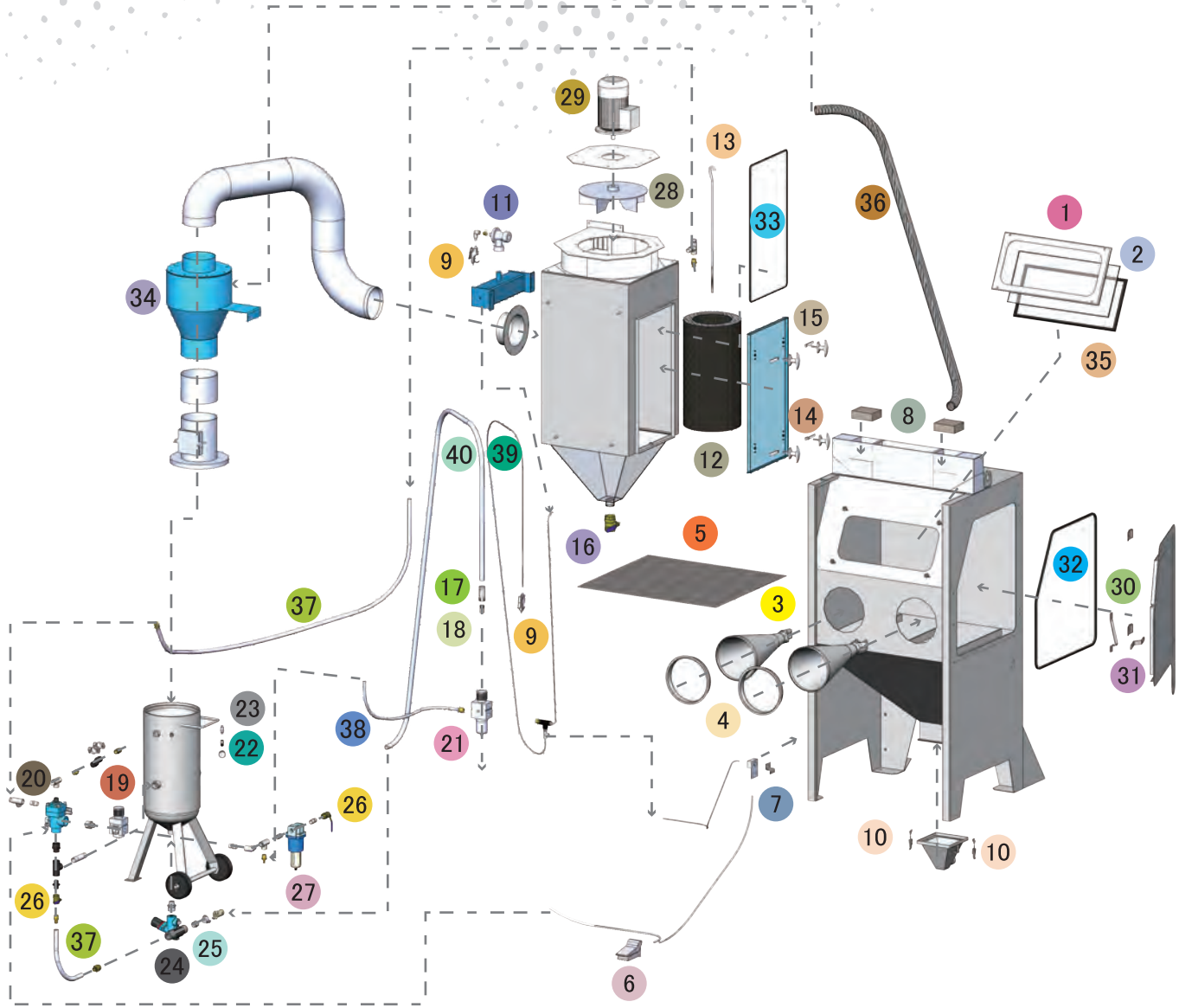
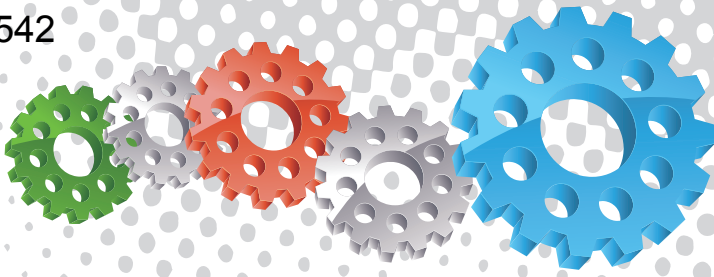
Cabinet Window Cover



Component Highlights



- | | | |
|------------------------------------|--|---|
| 1 Clean Air Induction Vents | 9 Moisture Separator | 17 Tungsten Carbide Pressure Blast Nozzle |
| 2 Cyclone Separation System | 10 Fina II Abrasive Metering Valve | 18 Quick Change Window Frame |
| 3 Air Blow Down Gun | 11 Foot Pedal Activation | 19 Large View Safety Glass Window |
| 4 Oversize Particle Clean Out Door | 12 Quick Release Abrasive Clean Out Hopper | 20 Dust Collector Filter Cartridge |
| 5 Pressure Blast Pot System | 13 Dust Collector Drain Out Valve | 21 Reverse Pulse Jet Cartridge Dust Collector |
| 6 Safety Pressure Relief Valve | 14 Safety Door Interlock System | 22 Dust Collector Motor and Fan Assembly |
| 7 UniFlo Remote Control Valve | 15 Durable Woven Wire Work Floor | |
| 8 Pressure Regulator | 16 255mm (10") Diameter Blasting Gloves | |



Notation: SG: Approved by Ministry of Manpower, Singapore.

Assemblies

Stock Code	Description	Weight
BEC-CA-PB-0018	PB500P Blast Cabinet Assembly	430 kg (948 lbs)
BEC-CA-0568-00	PB500P/SG Pressure Cabinet Assembly	430 kg (948 lbs)

Optional Accessories

Stock Code	Description	Stock Code	Description
BAC-CA-PB-0427	Fixed Turntable	BAC-CA-PB-0428	PB500 Cabinet Lining Kit
BAC-CA-PB-0241	Dust Collector Silencer Kit	BAC-CA-PB-0277	Cabinet Gun Stand
BAC-CA-PB-0455	Foot Valve Guard	BAC-DC-0002-01	230V 1-Cartridge Auto-Reverse Pulse Kit

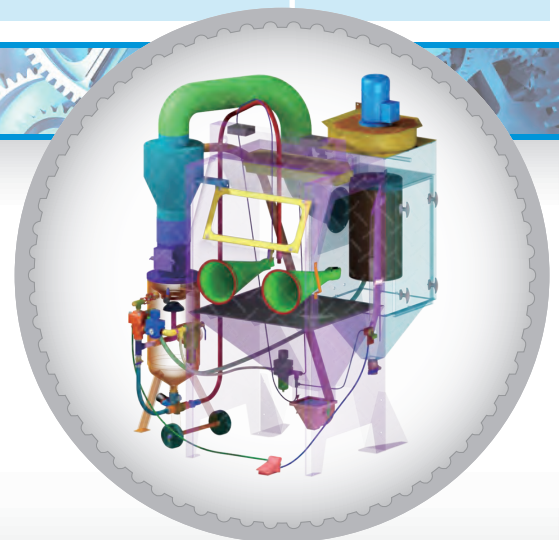
Parts List

Item	Stock Code	Description	Qty
1	YAC-CA-PB-0153	Window Frame	1
2	BAC-CA-PB-0156	Rectangular Window	1
3	BAC-GL-PB-0003	10" Ø Cabinet Rubber Gloves	1 pr
4	BAC-CA-PB-0157	Cabinet Entry Ring	2
5	BAC-CA-PB-0155	Cabinet Floor Mesh	1
6	BAC-CA-PB-0086	Foot Valve Spring Return	1
7	YAC-CA-PB-0219	Door Interlock Valve	1
8	BAC-CA-PB-0140	Air Entry Filter	4
9	YAC-CA-PB-0145	1/4" Blow Off Gun	2
10	YAC-FN-PB-0041	Toggle Catch	2
11	BAC-DC-PB-0007	Pulse Valve	1
12	BAC-DF-PB-0002	Filter Cartridge - Size 2 (Open/Close)	1
13	BAC-DC-PB-0031	Hanger Rod	1
14	YAC-CA-PB-0146	Handle	4
15	YAC-CA-PB-0205	Handle Tongue	4
16	BAC-PF-PB-0008	38 mm (1-1/2") Ball Valve	1
17	BAC-NZ-PB-0021	NNH-0 Nylon Nozzle Holder	1
18	BAC-NZ-PB-0054	Blast Nozzle ATN-3S Alum/Tungsten Short	1
19	BAC-AF-PB-0153	19 mm (3/4") Pressure Regulator With Gauge	1
20	BAC-RC-PB-0014	UniFlo Valve Assembly With Fittings	1
21	BAC-AF-PB-0048	9.5 mm 3/8" Filter Regulator With Gauge	1
22	BAC-PF-PB-0030	6 mm (1/4")-125 PSI Pressure Relief Valve	1
23	BAC-PF-PB-0031	6 mm (1/4") Pressure Gauge - Rear Entry	1
24	BAC-VA-0397-00	Fina II Valve 1/2"M X 3/4"F	1
25	BAC-HC-0084-00	STC-0 Steel Threaded Pot Coupling	1
26	BAC-PF-PB-0004	19 mm (3/4") Ball Valve	2
27	BAC-AF-PB-0057	19 mm (3/4") Port Moisture Separator	1
28	YAC-CA-PB-0183	Fan Impellor - 360CFM Aluminium	1
29	YAC-CA-PB-0144	1.5 kw 415 V/50 Hz Motor	1
30	YAC-CA-PB-0440	Door Latch	1
31	YAC-CA-PB-0439	Handle	1
32	BAC-CA-PB-0164	Cabinet Door Seal	1
33	BAC-CA-PB-0406	Dust Collector Door Seal	1
34	BAC-CA-0317-02	Rubber Lined Cyclone	1
35	BAC-CA-PB-0161	Cabinet Window Seal	2
36	BAC-CA-0596-00	Recovery Hose	1
37	YAC-BF-PB-0041	Hose-Air/Water Delivery 19 mmID x 29 mmOD	2 m
38	BAC-CA-PB-0315	Blast Hose PB500/ES	1
39	YAC-PF-PB-0125	1/4" NB Air Hose	1.5 m
40	BAC-CA-0591-00	Blast Hose	1

Technical Data



- Optional Turntable Load:**
 250 kg (551 lbs)
- Internal Size:**
 900 mm (35") Wide 783 mm (31") Deep
 730 mm (29") High
- Door Size:**
 645 mm (25") Wide 730 mm (29") High
- Air Consumption:**
 68 m³/hr (40 cfm) @550kPa (80 psi)
- Blast Nozzle Size:**
 BAC-NZ-PB-0054
 Nozzle ATN-3S Orifice 3/16" - 4.8 mm
- Cabinet Light:**
 2 x 18Watt 230V 50Hz
- Cabinet Overall Dimension:**
 1620 mm (64") Wide 1460 mm (58") Deep
 2220 mm (88") High
- Recommended Floor Area:**
 2800 mm (110") Wide 2300 mm (91") Deep
- Window Size:**
 600 mm (24") Wide 250 mm (10") High
- Air Supply Line:**
 19 mm (3/4")
- Electrical Power:**
 1.5 Kw (2 hp) 415VAC 50Hz 2 Pole 3 Phase





PB1000P Blast Cabinets



Product Features

The PanBlast™ PB1000P Blast Cabinet is a highly efficient, general purpose, industrial blast cabinet, and is compatible with a wide range of abrasive media, including:

- * FastBlast™ Chilled Iron Grit
- * QuickCut™ Aluminium Oxide
- * EnviroGrit™ Garnet
- * PanaGrit™ Cast Steel Grit
- * BrightBlast™ Glass Beads
- * PanaShot™ Steel Shot

- ▶ Up to three times faster than suction blast systems.
- ▶ PanBlast™ 31 litres (1.1 ft³) blast pot.
- ▶ Cyclone type abrasive separator cleans abrasive during use.
- ▶ Safety door interlock.
- ▶ Integral dry cartridge reverse pulse dust collector for clear visibility.
- ▶ Heavy duty wear resistant rubber gloves.
- ▶ Quick-change laminated glass viewing window - no tools required.
- ▶ Fina II abrasive metering valve.
- ▶ Compressed air regulator and gauge.
- ▶ Standard air blow down gun.

Common Applications

- ▶ De-scale and de-rust metal.
- ▶ Remove paint and coatings.
- ▶ Remove burrs, flashings and sand from castings and moldings.
- ▶ Decorative finishing of non-ferrous metals.
- ▶ Stone and glass etching.
- ▶ Mold cleaning.

Complementary Products



ATN-S Blast Nozzles



ABN-S Blast Nozzles



ATN-M Blast Nozzles



AER85 Vacuum Blaster



Pow Air Vac



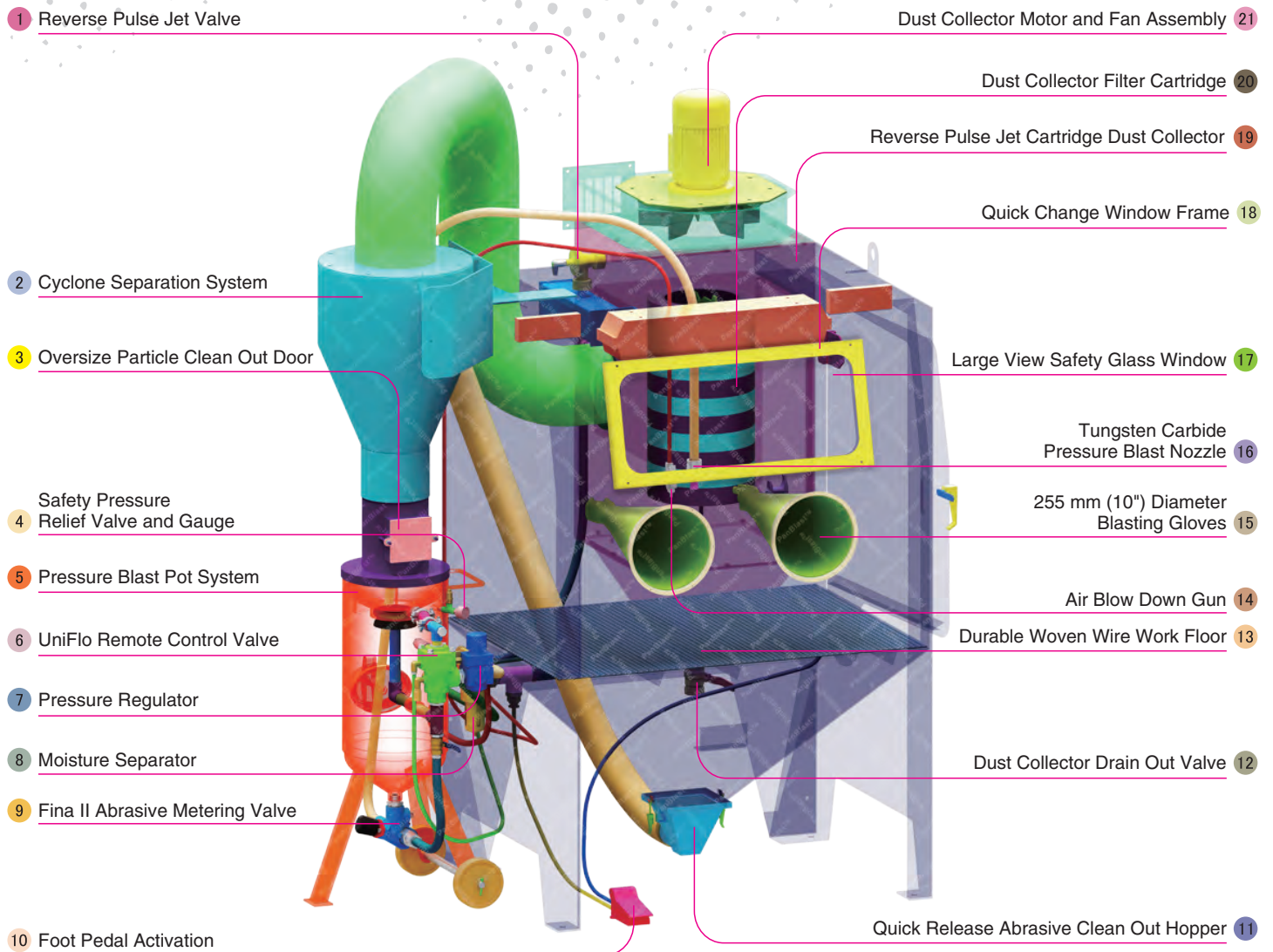
Filter Cartridge



Moisture Separator



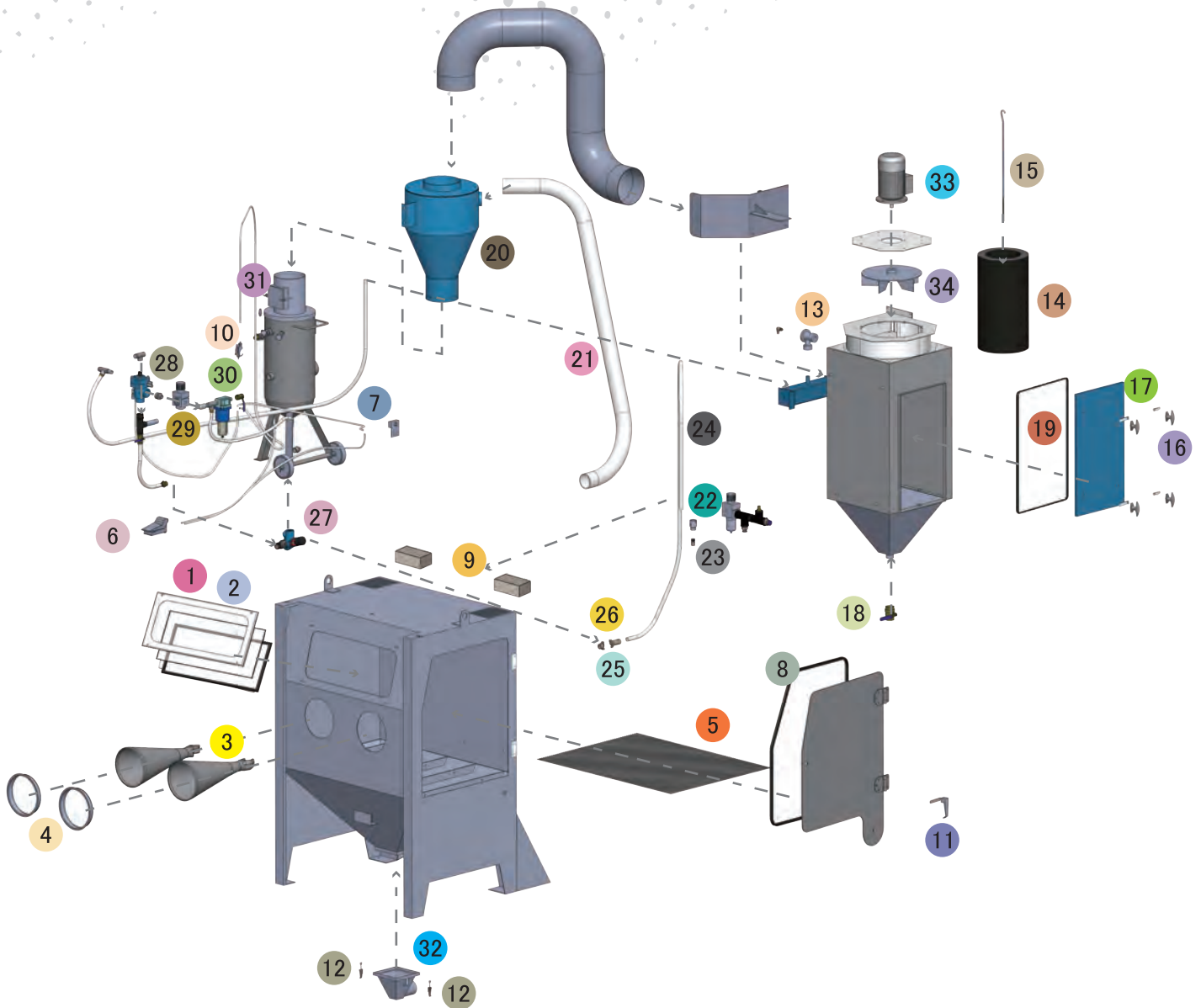
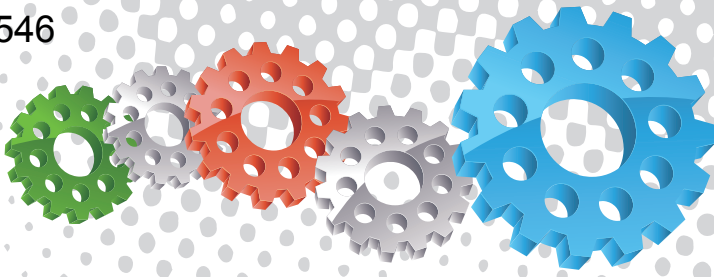
Cabinet Window Cover



Component Highlights



- | | | |
|--|--|---|
| 1 Reverse Pulse Jet Valve | 8 Moisture Separator | 15 255 mm (10") Diameter Blasting Gloves |
| 2 Cyclone Separation System | 9 Fina II Abrasive Metering Valve | 16 Tungsten Carbide Pressure Blast Nozzle |
| 3 Oversize Particle Clean Out Door | 10 Foot Pedal Activation | 17 Large View Safety Glass Window |
| 4 Safety Pressure Relief Valve and Gauge | 11 Quick Release Abrasive Clean Out Hopper | 18 Quick Change Window Frame |
| 5 Pressure Blast Pot System | 12 Dust Collector Drain Out Valve | 19 Reverse Pulse Jet Cartridge Dust Collector |
| 6 UniFlo Remote Control Valve | 13 Durable Woven Wire Work Floor | 20 Dust Collector Filter Cartridge |
| 7 Pressure Regulator | 14 Air Blow Down Gun | 21 Dust Collector Motor and Fan Assembly |



Notation: AU: Approved by Worksafe, Australia. NZ: Approved by Department of Labour, New Zealand. SG: Approved by Ministry of Manpower, Singapore.

Assemblies

Stock Code	Description	Weight
BEC-CA-PB-0009	PB1000P/AU/NZ Pressure Cabinet Assembly	600 kg (1322 lbs)
BEC-CA-0565-00	PB1000P/SG Pressure Cabinet Assembly	600 kg (1322 lbs)

Optional Accessories

Stock Code	Description	Stock Code	Description
BAC-CA-PB-0180	PB1000 Cabinet Track & Turntable	BAC-CA-PB-0243	Tumble Basket Assembly - 350 mm Dia
BAC-CA-PB-0244	PB1000/1500/2000 Turntable Kit	BAC-CA-PB-0040	Tumble Basket Assembly - 300 mm Dia
BAC-CA-PB-0277	Cabinet Gun Stand	BAC-CA-PB-0455	Foot Valve Guard
BAC-CA-PB-0278	PB1000 Linning Kit	BAC-CA-PB-0292	Operator Sound Kit
BAC-CA-PB-0241	Silencer Kit	BAC-DC-0002-01	230V 1-Cartridge Auto-Reverse Pulse Kit

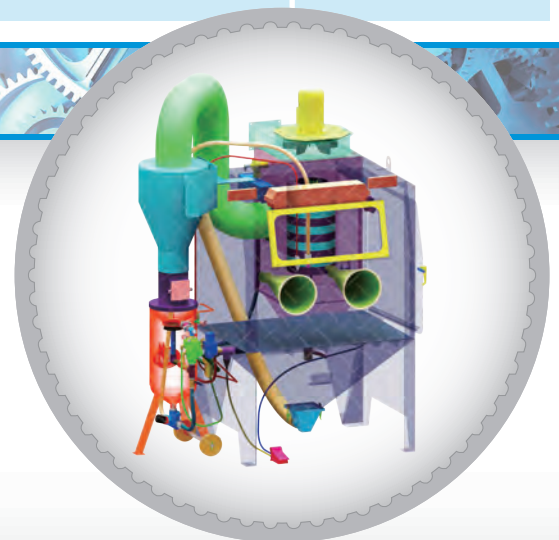
Parts List

Item	Stock Code	Description	Qty
1	BAC-CA-PB-0137	Rectangular Window	1
2	BAC-CA-PB-0141	Cabinet Window Seal	2
3	BAC-GL-PB-0003	10" Ø Cabinet Rubber Gloves	1 pr
4	BAC-CA-PB-0157	Cabinet Entry Ring	2
5	BAC-CA-PB-0126	Cabinet Floor Mesh	1
6	BAC-CA-PB-0086	Foot Valve Spring Return	1
7	YAC-CA-PB-0219	Door Interlock Valve	1
8	BAC-CA-PB-0178	Cabinet Door Seal	1
9	BAC-CA-PB-0140	Air Entry Filter	2
10	YAC-CA-PB-0145	1/4" Blow Off Gun	1
11	YAC-CA-PB-0138	Latch	1
12	YAC-FN-PB-0041	Toggle Catch	2
13	BAC-DC-PB-0007	Pulse Valve	1
14	BAC-DF-PB-0002	Filter Cartridge - Size 2 (Open/Close)	1
15	YAC-DC-PB-0005	700 mm Hanger Rod	1
16	YAC-CA-PB-0146	Handle	4
17	YAC-CA-PB-0205	Handle Tongue	4
18	BAC-PF-PB-0008	38 mm (1-1/2") Ball Valve	1
19	YAC-CA-PB-0375	Dust Collector Door Seal	0.6 m
20	BAC-CA-0281-04	Rubber Lined Cyclone	1
21	BAC-CA-0597-00	Recovery Hose	1
22	BAC-NZ-PB-0025	ANH-1/2 Aluminium Nozzle Holder	1
23	BAC-NZ-PB-0054	Blast Nozzle ATN-3s Alum/Tungsten Short	1
24	BAC-HB-PB-0002	Blast Hose 19mm X 34mm X 20mm L2	2.5 m
25	BAC-HC-0090-00	SHC-1/2 Steel Hose Coupling	1
26	BAC-HC-0086-00	STC-1/2 Steel Threaded Pot Coupling	1
27	BAC-VA-0397-00	Fina II Valve 1/2"M x 3/4"F	1
28	BAC-RC-PB-0086	UniFlo Remote Control Valve	1
29	BAC-AF-PB-0153	19 mm (3/4") Pressure Regulator With Gauge	1
30	BAC-PF-PB-0004	19 mm (3/4") Ball Valve	1
31	BAC-PF-PB-0030	6 mm (1/4") - 125 psi Pressure Relief Valve	1
32	YAC-CA-PB-0226	Spigot	1
33	YAC-CA-PB-0144	1.5kw 415v/50hz Motor	1
34	YAC-CA-PB-0183	Fan Impellor - 360cfm Aluminium	1

Technical Data



- Optional Turntable Load:**
 250 kg (551 lbs)
- Internal Size:**
 1100 mm (43") Wide 920 mm (36") Deep
 890 mm (35") High
- Door Size:**
 755 mm (30") Wide 855 mm (34") High
- Air Consumption:**
 85 m³/hr (50cfm) @ 550 kPa (80 psi)
- Blast Nozzle Size:**
 BAC-NZ-PB-0054
 Nozzle ATN-3S Orifice 3/16" - 4.8 mm
- Cabinet Light:**
 2 x 18Watt 230V 50Hz
- Cabinet Overall Dimension:**
 1830 mm (72") Wide 1573 mm (62") Deep
 2400 mm (95") High
- Recommended Floor Area:**
 3400 mm (134") Wide 2400 mm (95") Deep
- Window Size:**
 750 mm (30") Wide 300 mm (12") High
- Air Supply Line:**
 19 mm (3/4")
- Electrical Power:**
 1.5Kw (2 hp) 415VAC 50Hz 2 Pole 3 Phase





PB1500P Blast Cabinets



Product Features

The PanBlast™ PB1500P Blast Cabinet is a highly efficient, general purpose, industrial blast cabinet, and is compatible with a wide range of abrasive media, including:

- * FastBlast™ Chilled Iron Grit
- * QuickCut™ Aluminium Oxide
- * EnviroGrit™ Garnet
- * PanaGrit™ Cast Steel Grit
- * BrightBlast™ Glass Beads
- * PanaShot™ Steel Shot

- ▶ Up to three times faster than suction blast systems.
- ▶ PanBlast™ 31 litres (1.1 ft³) blast pot.
- ▶ Cyclone type abrasive separator cleans abrasive during use.
- ▶ Safety door interlock.
- ▶ Integral dry cartridge reverse pulse dust collector for clear visibility.
- ▶ Heavy duty wear resistant rubber gloves.
- ▶ Quick-change laminated glass viewing window - no tools required.
- ▶ Fina II abrasive metering valve.
- ▶ Compressed air regulator and gauge.
- ▶ Standard air blow down gun.

Common Applications

- ▶ De-scale and de-rust metal.
- ▶ Remove paint and coatings.
- ▶ Remove burrs, flashings and sand from castings and moldings.
- ▶ Decorative finishing of non-ferrous metals.
- ▶ Stone and glass etching.
- ▶ Mold cleaning.

Complementary Products



ATN-S Blast Nozzles



ABN-S Blast Nozzles



ATN-M Blast Nozzles



AER85 Vacuum Blaster



Pow Air Vac



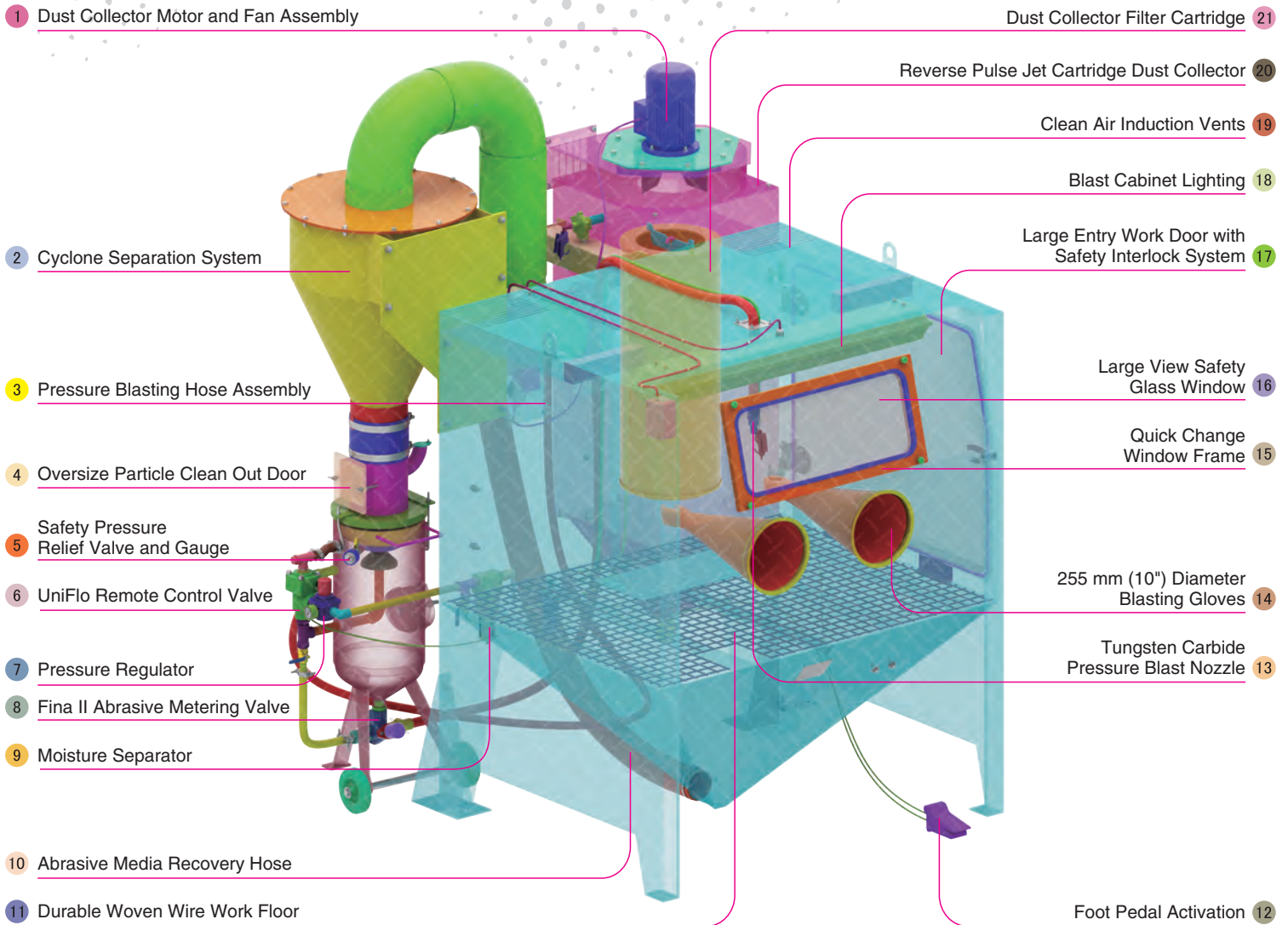
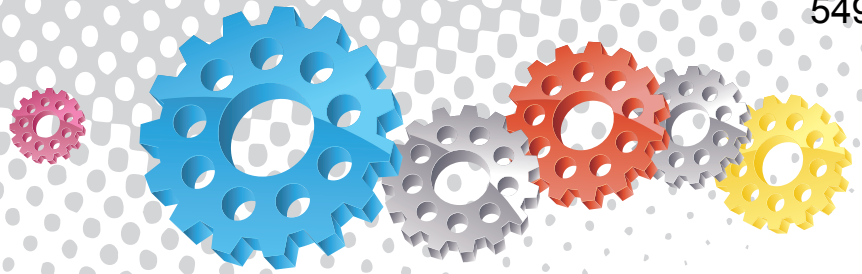
Filter Cartridge



Moisture Separator



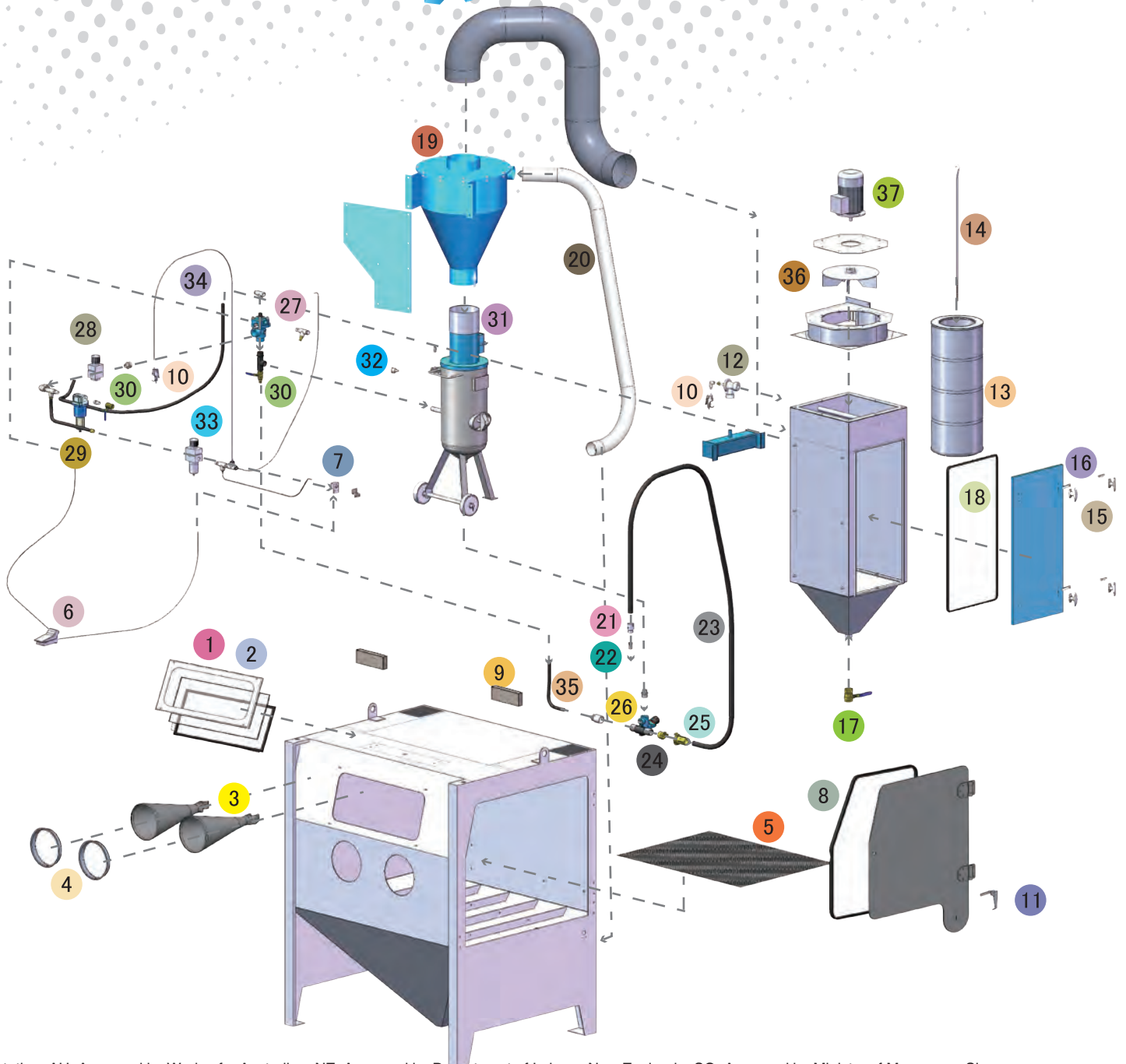
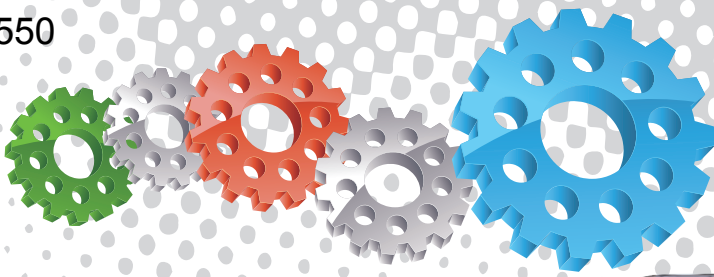
Cabinet Window Cover



Component Highlights



- | | | |
|--|---|---|
| 1 Dust Collector Motor and Fan Assembly | 8 Fina II Abrasive Metering Valve | 15 Quick Change Window Frame |
| 2 Cyclone Separation System | 9 Moisture Separator | 16 Large View Safety Glass Window |
| 3 Pressure Blasting Hose Assembly | 10 Abrasive Media Recovery Hose | 17 Large Entry Work Door with Safety Interlock System |
| 4 Oversize Particle Clean Out Door | 11 Durable Woven Wire Work Floor | 18 Blast Cabinet Lighting |
| 5 Safety Pressure Relief Valve and Gauge | 12 Foot Pedal Activation | 19 Clean Air Induction Vents |
| 6 UniFlo Remote Control Valve | 13 Tungsten Carbide Pressure Blast Nozzle | 20 Reverse Pulse Jet Cartridge Dust Collector |
| 7 Pressure Regulator | 14 255 mm (10") Diameter Blasting Gloves | 21 Dust Collector Filter Cartridge |



Notation: AU: Approved by Worksafe, Australia. NZ: Approved by Department of Labour, New Zealand. SG: Approved by Ministry of Manpower, Singapore.

Assemblies

Stock Code	Description	Weight
BEC-CA-0557-00	PB1500P/AU/NZ Pressure Cabinet Assembly	800 kg (1764 lbs)
BEC-CA-0556-00	PB1500P/SG Pressure Cabinet Assembly	800 kg (1764 lbs)

Optional Accessories

Stock Code	Description	Stock Code	Description
BAC-CA-PB-0212	PB1500 Track & Turntable	BAC-CA-PB-0455	Foot Valve Guard
BAC-CA-PB-0243	Tumble Basket Assembly - 350 mm Dia	BAC-CA-PB-0292	Operator Sound Kit
BAC-CA-PB-0040	Tumble Basket Assembly - 300 mm Dia	BAC-CA-PB-0241	Silencer Kit
BAC-CA-PB-0244	PB1000/1500/2000 Turntable Kit	BAC-CA-PB-0279	PB1500 Lining Kit
BAC-CA-PB-0277	Cabinet Gun Stand	BAC-DC-0002-01	230V 1-Cartridge Auto-Reverse Pulse Kit

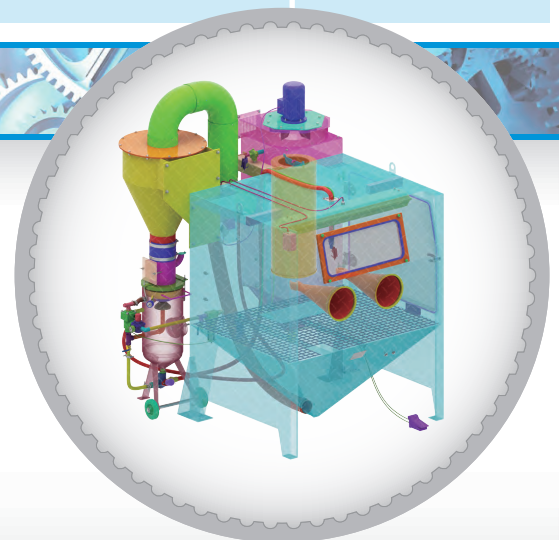
Parts List

Item	Stock Code	Description	Qty
1	BAC-CA-PB-0137	Rectangular Window	1
2	BAC-CA-PB-0141	Cabinet Window Seal	2
3	BAC-GL-PB-0003	10" Ø Cabinet Rubber Gloves	1 pr
4	BAC-CA-PB-0157	Cabinet Entry Ring	2
5	BAC-CA-0623-00	Cabinet Floor Mesh	1
6	BAC-CA-PB-0086	Foot Valve Spring Return	1
7	YAC-CA-PB-0219	Door Interlock Valve	1
8	BAC-CA-PB-0319	Cabinet Door Seal	1
9	BAC-CA-PB-0140	Air Entry Filter	4
10	YAC-CA-PB-0145	1/4" Blow Off Gun	1
11	YAC-CA-PB-0138	Latch	1
12	BAC-DC-PB-0007	Pulse Valve	1
13	BAC-DF-PB-0005	Filter Cartridge - Size 3 (Open/Close)	1
14	YAC-DC-PB-0033	920 mm Hanger Rod	1
15	YAC-CA-PB-0146	Handle	4
16	YAC-CA-PB-0205	Handle Tongue	4
17	BAC-PF-PB-0008	38 mm (1-1/2") Ball Valve	1
18	BAC-CA-PB-0436	Dust Collector Jumbo Door Seal	1
19	BAC-CA-PB-0282	PB1500HD Rubber Lined Cyclone	1
20	BAC-CA-0600-00	Recovery Hose	1
21	BAC-NZ-PB-0025	ANH 1/2 Aluminium Nozzle Holder	1
22	BAC-NZ-PB-0054	Blast Nozzle ATN-3S Alum/Tungsten Short	1
23	BAC-CA-0593-00	Blast Hose	1
24	BAC-HC-0086-00	STC-1/2 Steel Threaded Pot Coupling	1
25	BAC-HC-0090-00	SHC-1/2 Steel Hose Coupling	1
26	BAC-VA-0397-00	Fina II Valve 1/2"M X 3/4"F	1
27	BAC-RC-PB-0014	UniFlo Valve Assembly With Fittings	1
28	BAC-AF-PB-0153	19 mm (3/4") Pressure Regulator With Gauge	1
29	BAC-AF-PB-0057	19 mm (3/4") Port Moisture Separator	1
30	BAC-PF-PB-0004	19 mm (3/4") Ball Valve	2
31	BAC-PF-PB-0030	6 mm (1/4")-125 PSI Pressure Relief Valve	1
32	BAC-PF-PB-0031	6 mm (1/4") Pressure Gauge - Rear Entry	1
33	BAC-AF-PB-0048	9.5 mm 3/8" Filter Regulator With Gauge	1
34	YAC-PF-PB-0125	1/4" NB Air Hose	5 m
35	YAC-BF-PB-0041	Hose-Air/Water Delivery 19 mmID x 29 mmOD	1 m
36	YAC-CA-PB-0183	Fan Impellor - 360 CFM Aluminium	1
37	YAC-CA-PB-0144	1.5 Kw 415 V/50 Hz Motor	1

Technical Data



- Optional Turntable Load:**
250 kg (551 lbs)
- Internal Size:**
1400 mm (55") Wide 1180 mm (47") Deep
1040 mm (41") High
- Door Size:**
1055 mm (42") Wide 855 mm (34") High
- Air Consumption:**
85 m³/hr (50cfm) @550 kPa (80 psi)
- Blast Nozzle Size:**
BAC-NZ-PB-0054
Nozzle ATN-3S Orifice 3/16" - 4.8 mm
- Cabinet Light:**
2 x 36Watt 230V 50Hz
- Cabinet Overall Dimension:**
1914 mm (76") Wide 1912 mm (76") Deep
2638 mm (104") High
- Recommended Floor Area:**
3700 mm (146") Wide 2700 mm (106") Deep
- Window Size:**
750 mm (30") Wide 300 mm (12") High
- Air Supply Line:**
19 mm (3/4")
- Electrical Power:**
1.5Kw (2hp) 415VAC 50Hz 2 Pole 3 Phase





PB2000P Blast Cabinet



Product Features

The PanBlast™ PB2000P Blast Cabinet is a highly efficient, general purpose, industrial blast cabinet, compatible with a wide range of abrasive media, including:

- * FastBlast™ Chilled Iron Grit
- * QuickCut™ Aluminium Oxide
- * EnviroGrit™ Garnet
- * PanaGrit™ Cast Steel Grit
- * BrightBlast™ Glass Beads
- * PanaShot™ Steel Shot

- ▶ Up to three times faster than suction blast systems.
- ▶ PanBlast™ 31 liters (1.1ft³) blast pot.
- ▶ Cyclone type abrasive separator cleans abrasive during use.
- ▶ Safety door interlock.
- ▶ Integral dry twin cartridge reverse pulse dust collector for clear visibility.
- ▶ Dual heavy duty wear resistant rubber gloves.
- ▶ Quick-change dual laminated glass viewing windows - no tools required.
- ▶ Fina II abrasive metering valve.
- ▶ Compressed air regulator and gauge.
- ▶ Standard air blow down gun.

Common Applications

- ▶ De-scale and de-rust metal.
- ▶ Remove paint and coatings.
- ▶ Remove burrs, flashings and sand from castings and moldings.
- ▶ Decorative finishing of non-ferrous metals.
- ▶ Stone and glass etching.
- ▶ Mold cleaning.

Complementary Products



ATN-S Blast Nozzles



ABN-S Blast Nozzles



ATN-M Blast Nozzles



AER85 Vacuum Blaster



Pow Air Vac



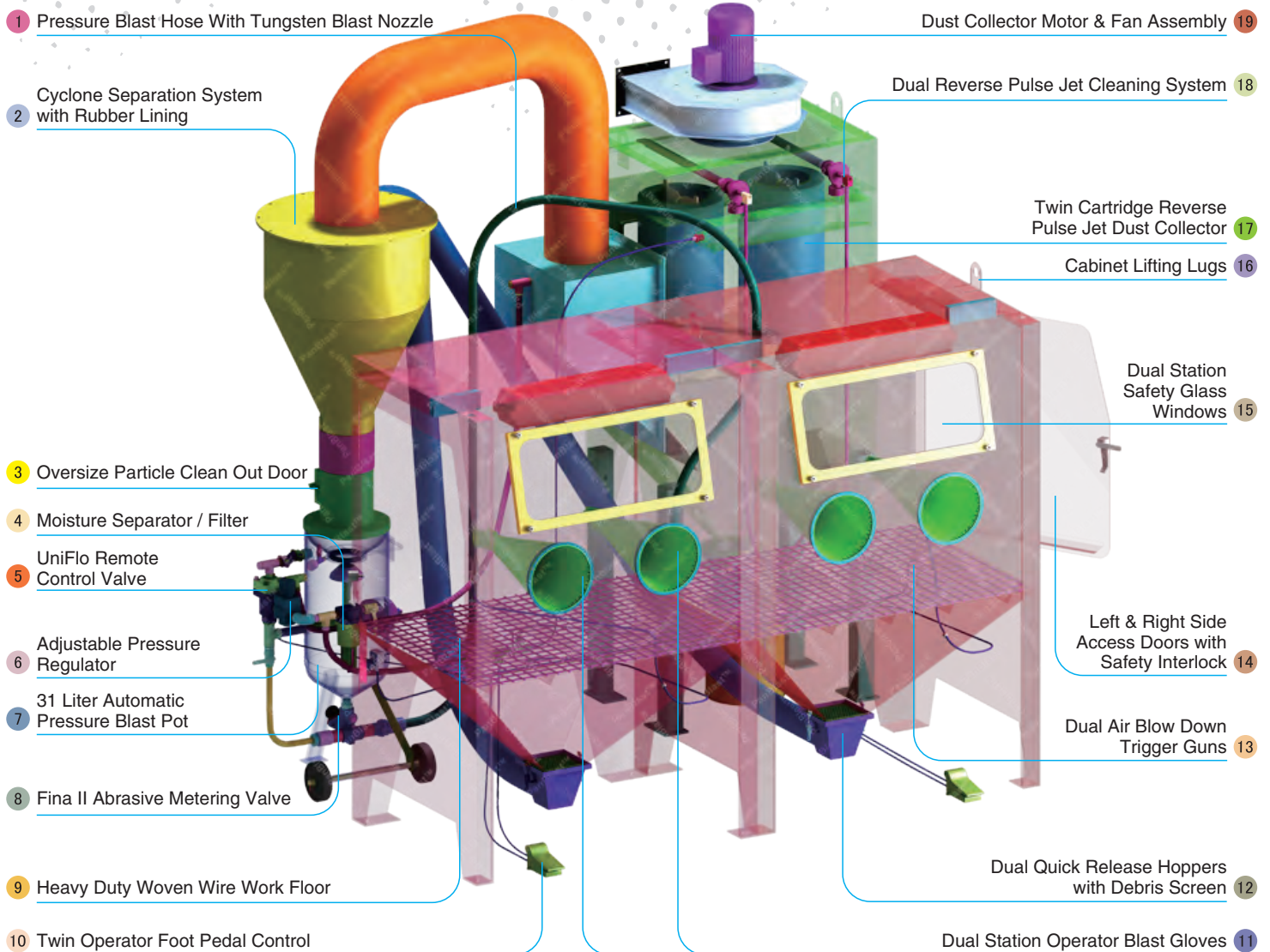
Filter Cartridge



Moisture Separator



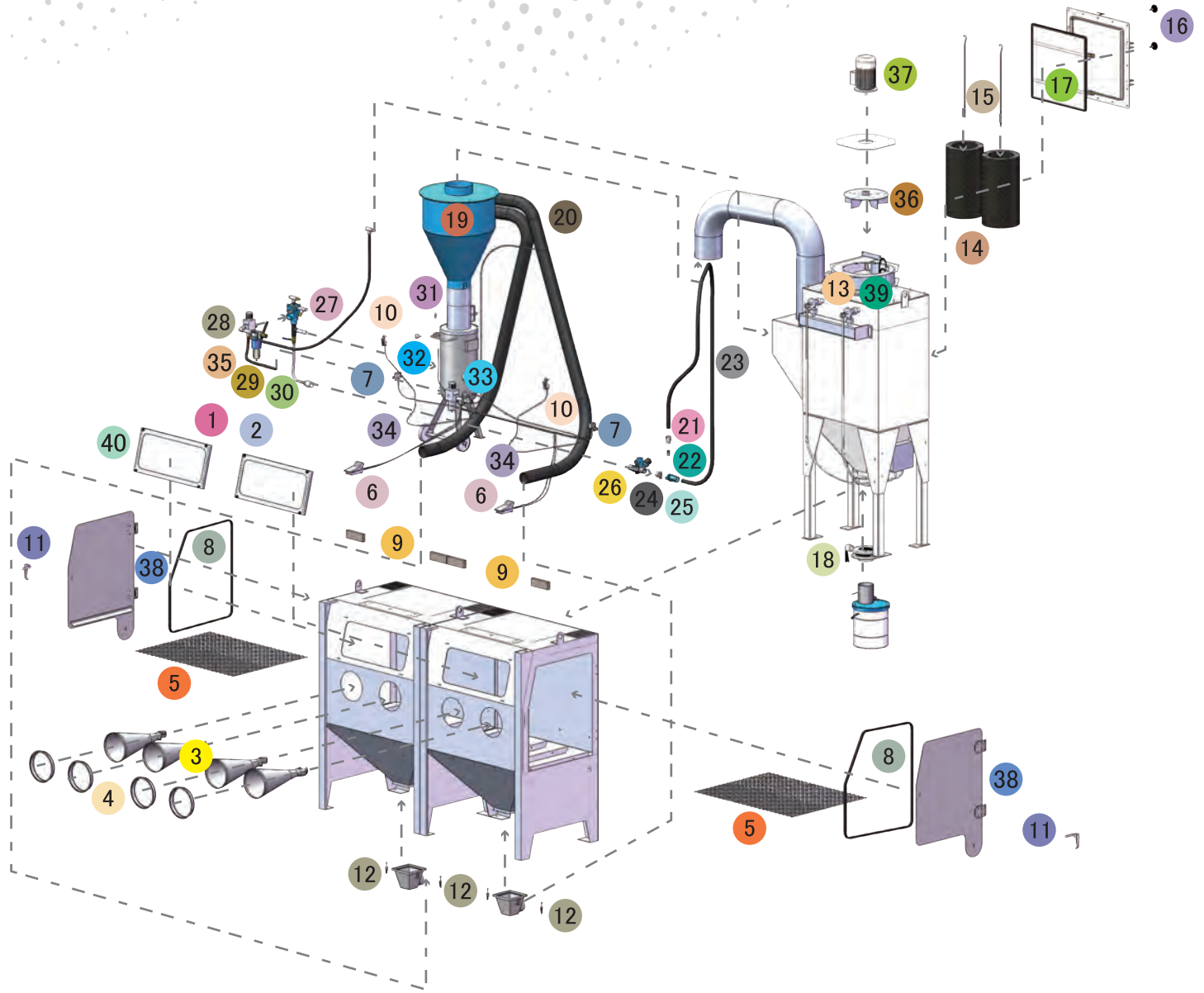
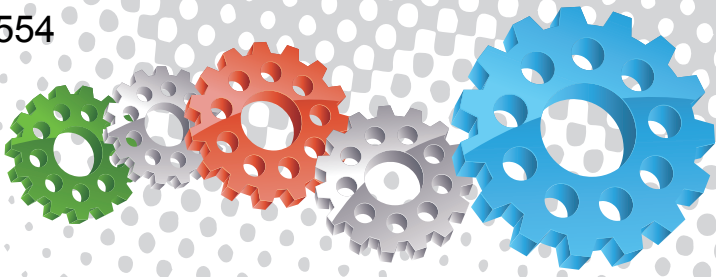
Cabinet Window Cover



Component Highlights



- | | | |
|--|---|--|
| 1 Pressure Blast Hose With Tungsten Blast Nozzle | 8 Fina II Abrasive Metering Valve | 15 Dual Station Safety Glass Windows |
| 2 Cyclone Separation System with Rubber Lining | 9 Heavy Duty Woven Wire Work Floor | 16 Cabinet Lifting Lugs |
| 3 Oversize Particle Clean Out Door | 10 Twin Operator Foot Pedal Control | 17 Twin Cartridge Reverse Pulse Jet Dust Collector |
| 4 Moisture Separator / Filter | 11 Dual Station Operator Blast Gloves | 18 Dual Reverse Pulse Jet Cleaning System |
| 5 UniFlo Remote Control Valve | 12 Dual Quick Release Hoppers with Debris Screen | 19 Dust Collector Motor & Fan Assembly |
| 6 Adjustable Pressure Regulator | 13 Dual Air Blow Down Trigger Guns | |
| 7 31 Liter Automatic Pressure Blast Pot | 14 Left & Right Side Access Doors with Safety Interlock | |



Assembly

Stock Code	Description	Weight
BEC-CA-PB-0013	PB2000P Blast Cabinet Assembly	1170 kg (2579 lbs)

Optional Accessories

Stock Code	Description	Stock Code	Description
BAC-CA-PB-0244	PB1000/1500/2000 Turntable Kit	BAC-CA-PB-0280	PB2000 Lining Kit
BAC-CA-PB-0277	Cabinet Gun Stand	BAC-CA-PB-0292	Operator Sound Kit
BAC-CA-PB-0241	Silencer Kit	BAC-CA-PB-0247	PB2000/P Track & Turntable Kit LH
BAC-CA-PB-0455	Foot Valve Guard	BAC-CA-PB-0180	PB1000 Cabinet Track & Turntable
BAC-CA-PB-0040	Tumble Basket Assembly - 300 mm Dia	BAC-CA-PB-0243	Tumble Basket Assembly - 350 mm Dia

Parts List

Item	Stock Code	Description	Qty
1	YAC-CA-PB-0101	Window Frame	2
2	BAC-CA-PB-0137	Rectangular Window	2
3	BAC-GL-PB-0003	10" Ø Cabinet Rubber Gloves	2 pr
4	BAC-CA-PB-0157	Cabinet Entry Ring	4
5	BAC-CA-PB-0126	Cabinet Floor Mesh	2
6	BAC-CA-PB-0086	Foot Valve Spring Return	2
7	YAC-CA-PB-0219	Door Interlock Valve	2
8	BAC-CA-PB-0178	Cabinet Door Seal	2
9	BAC-CA-PB-0140	Air Entry Filter	4
10	YAC-CA-PB-0145	1/4" Blow Off Gun	2
11	YAC-CA-PB-0138	Latch	2
12	YAC-FN-PB-0041	Toggle Catch	4
13	YAC-DC-0053-00	Pulse Valve	2
14	BAC-DF-PB-0002	Filter Cartridge - Size 2	2
15	YAC-DC-PB-0005	700 mm Hanger Rod	2
16	YAC-FN-0383-00	Female Star Knob	2
17	BAC-DC-0038-00	Dust Collector Access Door Seal	1
18	BAC-PF-0407-00	Butterfly Valve - 5"	1
19	BAC-CA-PB-0283	PB2000HD Rubber Lined Cyclone	1
20	BAC-CA-0609-00	Recovery Hose	2
21	YAC-NZ-PB-0081	ANH 1/2 Aluminium Nozzle Holder Detail	1
22	BAC-NZ-PB-0054	Blast Nozzle ATN-3S Alum/Tungsten Short	1
23	BAC-CA-0594-00	Blast Hose	1
24	BAC-HC-PB-0057	NTC-1/2 Nylon Threaded Pot Coupling	1
25	BAC-HC-PB-0054	NHC-1/2 Nylon Hose Coupling	1
26	BAC-VA-0397-00	Fina II Valve 1/2"M X 3/4"F	1
27	BAC-RC-PB-0014	UniFlo Valve Assembly With Fittings	1
28	BAC-AF-PB-0153	19 mm (3/4") Pressure Regulator With Gauge	1
29	BAC-AF-PB-0057	19 mm (3/4") Port Moisture Separator	1
30	BAC-PF-PB-0004	19 mm (3/4") Ball Valve	2
31	BAC-PF-PB-0030	6 mm (1/4")-125 PSI Pressure Relief Valve	1
32	BAC-PF-PB-0031	6 mm (1/4") Pressure Gauge - Rear Entry	1
33	BAC-AF-PB-0048	9.5 mm 3/8" Filter Regulator With Gauge	1
34	YAC-PF-PB-0125	1/4" NB Air Hose	2 m
35	YAC-BF-PB-0041	Hose-Air/Water Delivery 19 mmID x 29 mmOD	3 m
36	YAC-CA-PB-0183	Fan Impellor - 360CFM Aluminium	1
37	YAC-CA-PB-0142	230VAC 1PH 50HZ Motor	1
38	BAC-CA-PB-0296	Hinge Assembly	4
39	BAC-DC-0061-00	Pulse Timer 2-10 Stations	1
40	BAC-CA-PB-0141	Cabinet Window Seal	4

Technical Data



- Optional Turntable Load:**
 250 kg (551 lbs)
- Internal Size:**
 2000 mm (79") Wide 920 mm (36") Deep
 890 mm (35") High
- Door Size:**
 755 mm (30") Wide 855 mm (34") High
- Air Consumption:**
 68 m³/hr (40cfm) @ 550kPa (80 psi)
- Blast Nozzle Size:**
 BAC-NZ-PB-0054
 Nozzle ATN-3S Orifice 3/16" - 4.8mm
- Cabinet Light:**
 4 x 18Watt 230V 50Hz
- Cabinet Overall Dimension:**
 2496 mm (99") Wide 1809 mm (72") Deep
 2681 mm (106") High
- Recommended Floor Area:**
 5600 mm (221") Wide 3000 mm (118") Deep
- Window Size:**
 2 x 750 mm (30") Wide 300 mm (12") High
- Air Supply Line:**
 19 mm (3/4")
- Electrical Power:**
 4Kw (5hp) 415VAC 50Hz 2 Pole 3 Phase



Архангельск (8182)63-90-72
Астана (7172)727-132
Астрахань (8512)99-46-04
Барнаул (3852)73-04-60
Белгород (4722)40-23-64
Брянск (4832)59-03-52
Владивосток (423)249-28-31
Волгоград (844)278-03-48
Вологда (8172)26-41-59
Воронеж (473)204-51-73
Екатеринбург (343)384-55-89
Иваново (4932)77-34-06

Ижевск (3412)26-03-58
Иркутск (395)279-98-46
Казань (843)206-01-48
Калининград (4012)72-03-81
Калуга (4842)92-23-67
Кемерово (3842)65-04-62
Киров (8332)68-02-04
Краснодар (861)203-40-90
Красноярск (391)204-63-61
Курск (4712)77-13-04
Липецк (4742)52-20-81

Киргизия (996)312-96-26-47

Магнитогорск (3519)55-03-13
Москва (495)268-04-70
Мурманск (8152)59-64-93
Набережные Челны (8552)20-53-41
Нижний Новгород (831)429-08-12
Новокузнецк (3843)20-46-81
Новосибирск (383)227-86-73
Омск (3812)21-46-40
Орел (4862)44-53-42
Оренбург (3532)37-68-04
Пенза (8412)22-31-16

Россия (495)268-04-70

Пермь (342)205-81-47
Ростов-на-Дону (863)308-18-15
Рязань (4912)46-61-64
Самара (846)206-03-16
Санкт-Петербург (812)309-46-40
Саратов (845)249-38-78
Севастополь (8692)22-31-93
Симферополь (3652)67-13-56
Смоленск (4812)29-41-54
Сочи (862)225-72-31
Ставрополь (8652)20-65-13

Казахстан (772)734-952-31

Сургут (3462)77-98-35
Тверь (4822)63-31-35
Томск (3822)98-41-53
Тула (4872)74-02-29
Тюмень (3452)66-21-18
Ульяновск (8422)24-23-59
Уфа (347)229-48-12
Хабаровск (4212)92-98-04
Челябинск (351)202-03-61
Череповец (8202)49-02-64
Ярославль (4852)69-52-93

www.panblast.nt-rt.ru | | pav@nt-rt.ru