

Архангельск (8182)63-90-72  
Астана (7172)727-132  
Астрахань (8512)99-46-04  
Барнаул (3852)73-04-60  
Белгород (4722)40-23-64  
Брянск (4832)59-03-52  
Владивосток (423)249-28-31  
Волгоград (844)278-03-48  
Вологда (8172)26-41-59  
Воронеж (473)204-51-73  
Екатеринбург (343)384-55-89  
Иваново (4932)77-34-06

Ижевск (3412)26-03-58  
Иркутск (395)279-98-46  
Казань (843)206-01-48  
Калининград (4012)72-03-81  
Калуга (4842)92-23-67  
Кемерово (3842)65-04-62  
Киров (8332)68-02-04  
Краснодар (861)203-40-90  
Красноярск (391)204-63-61  
Курск (4712)77-13-04  
Липецк (4742)52-20-81

Киргизия (996)312-96-26-47

Магнитогорск (3519)55-03-13  
Москва (495)268-04-70  
Мурманск (8152)59-64-93  
Набережные Челны (8552)20-53-41  
Нижний Новгород (831)429-08-12  
Новокузнецк (3843)20-46-81  
Новосибирск (383)227-86-73  
Омск (3812)21-46-40  
Орел (4862)44-53-42  
Оренбург (3532)37-68-04  
Пенза (8412)22-31-16

Россия (495)268-04-70

Пермь (342)205-81-47  
Ростов-на-Дону (863)308-18-15  
Рязань (4912)46-61-64  
Самара (846)206-03-16  
Санкт-Петербург (812)309-46-40  
Саратов (845)249-38-78  
Севастополь (8692)22-31-93  
Симферополь (3652)67-13-56  
Смоленск (4812)29-41-54  
Сочи (862)225-72-31  
Ставрополь (8652)20-65-13

Казахстан (772)734-952-31

Сургут (3462)77-98-35  
Тверь (4822)63-31-35  
Томск (3822)98-41-53  
Тула (4872)74-02-29  
Тюмень (3452)66-21-18  
Ульяновск (8422)24-23-59  
Уфа (347)229-48-12  
Хабаровск (4212)92-98-04  
Челябинск (351)202-03-61  
Череповец (8202)49-02-64  
Ярославль (4852)69-52-93

[www.panblast.nt-rt.ru](http://www.panblast.nt-rt.ru) | | [pav@nt-rt.ru](mailto:pav@nt-rt.ru)

# Технические характеристики на дробеструйные шкафы для легких режимов работы компании **PanBlast**



## CS34 Blast Cabinets



### Product Features

The PanBlast™ CS34 Blast Cabinet is an economical, light duty, suction blast cabinet. It is ideally suited for low production volume applications. Recommended abrasive types for the CS34 include:

- \*QuickCut™ Aluminium Oxide
- \*BrightBlast™ Glass Beads
- \*EnviroGrit™ Garnet

- ▶ High performance trigger activated suction blast gun assembly.
- ▶ 3 mm (1/8") air tip with 6 mm (1/4") ceramic blast nozzle.
- ▶ Single molded access door.
- ▶ Extra large, 575 mm (22.6") x 265 mm (10.4") operator viewing window.
- ▶ Tear-off viewing window covers.

### Common Applications

- ▶ De-scale and de-rust metal surfaces.
- ▶ Remove paint and powder coating.
- ▶ Deburr and deflash castings and moldings.
- ▶ Decorative finishing of non-ferrous metals.
- ▶ Stone and glass etching.

## Complementary Products



Delta SNH Manual Blast Gun



Delta SNH Auto Blast Gun



PB500HD Blast Cabinet



PB500ES Blast Cabinet



PB1000HD Blast Cabinet



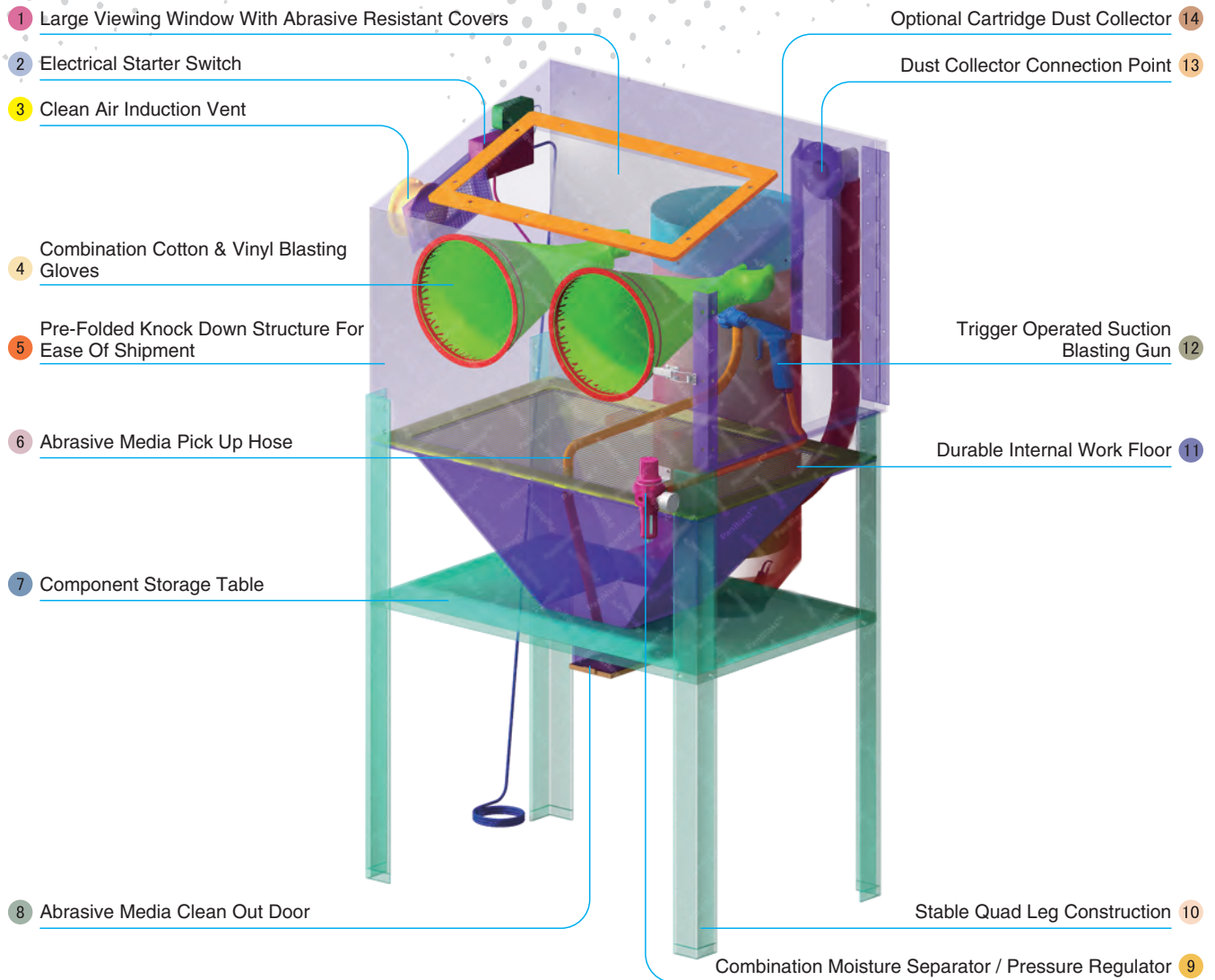
CS37 Blast Cabinet



PB1000P Blast Cabinet



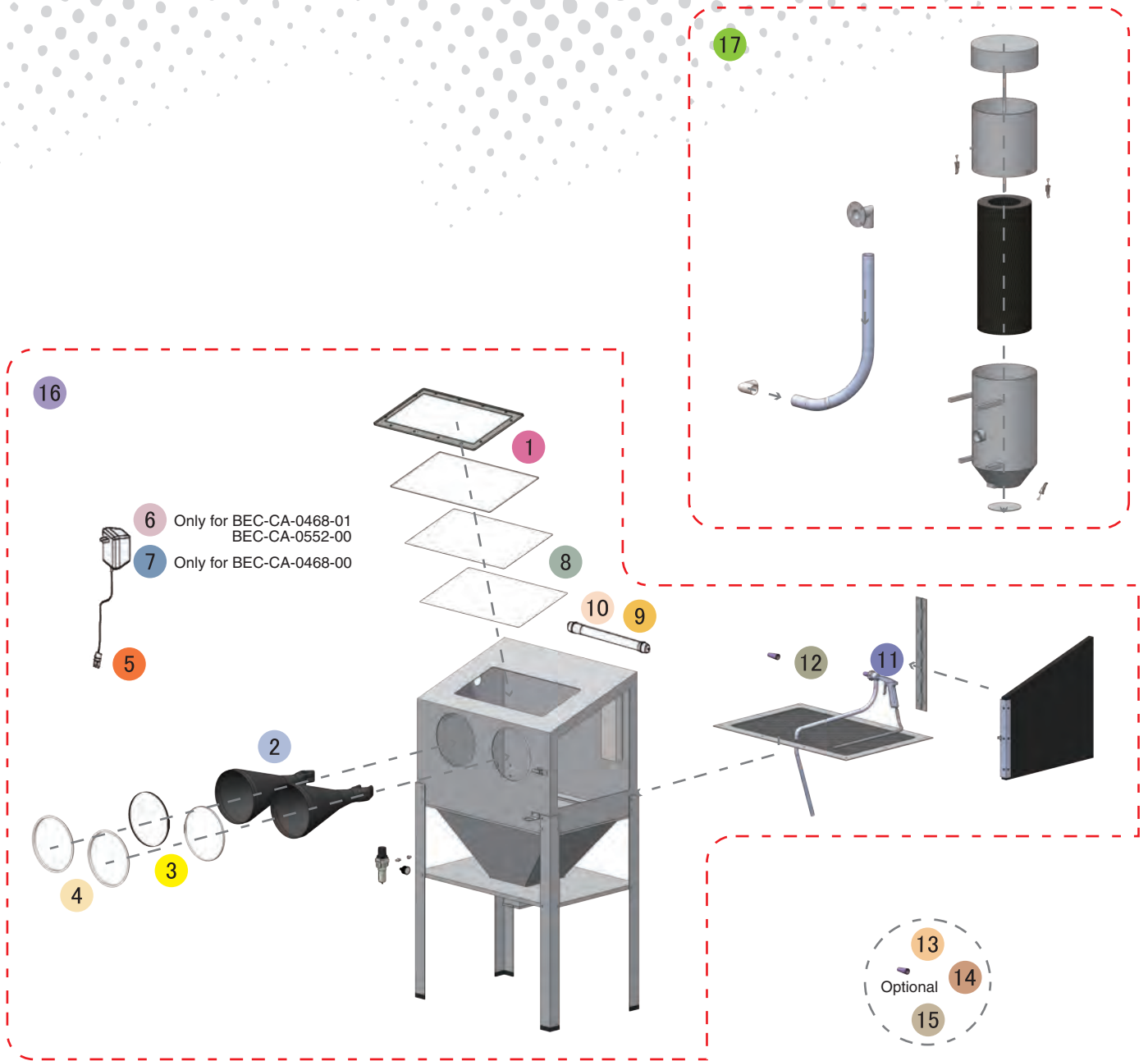
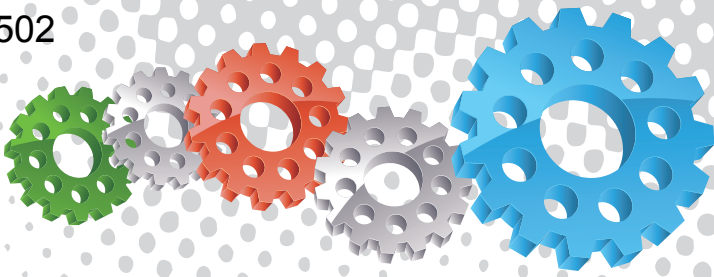
PB1500HD Blast Cabinet



## Component Highlights



- |  |   |  |
|--|---|--|
| 1 Large Viewing Window With Abrasive Resistant Covers  | 6 Abrasive Media Pick Up Hose                         | 11 Durable Internal Work Floor           |
| 2 Electrical Starter Switch                            | 7 Component Storage Table                             | 12 Trigger Operated Suction Blasting Gun |
| 3 Clean Air Induction Vent                             | 8 Abrasive Media Clean Out Door                       | 13 Dust Collector Connection Point       |
| 4 Combination Cotton & Vinyl Blasting Gloves           | 9 Combination Moisture Separator / Pressure Regulator | 14 Optional Cartridge Dust Collector     |
| 5 Pre-Folded Knock Down Structure For Ease Of Shipment | 10 Stable Quad Leg Construction                       |  |



## Assemblies

Stock Code	Description	Weight	Include Items
BEC-CA-0468-00	CS34 Blast Cabinet - 110VAC	48 kg (105.8 lbs)	16
BEC-CA-0468-01	CS34 Blast Cabinet - 230VAC	48 kg (105.8 lbs)	16
BEC-CA-0552-00	CS34 Blast Cabinet w/Dust Collector - 230VAC	60 kg (132.3 lbs)	16 17

## Optional Accessories

Stock Code	Description	Include Items
BAC-NZ-0506-00	4 mm Ceramic Nozzle – CS34	13
BAC-NZ-0508-00	6 mm Ceramic Nozzle – CS34	14
BAC-NZ-0509-00	7 mm Ceramic Nozzle – CS34	15
BAC-CA-0510-00	230VAC Dust Collector Assembly Kit	17
BAC-DC-0037-01	Dust Collector Motor - 230VAC/1KW CE	







## CS37 Blast Cabinets



### Product Features

The PanBlast™ CS37 blast cabinet is an economical, mid-sized, light-duty blast cabinet with a surprisingly extensive features list. It is a robust solution for applications with limited compressed air and power supplies.

- ▶ All steel cabinet shell.
- ▶ Twin door access.
- ▶ Powder coated internal and external finish.
- ▶ Full height floor mounting legs.
- ▶ Cotton lined vinyl operating gloves.
- ▶ Cabinet mounted Control Panel.
- ▶ Pressure regulator, pressure gauge, stop/start button and indicator lights.
- ▶ Dual blasting gun system, one foot pedal operated and one trigger operated.
- ▶ Rear mounted dust collector, cartridge filter and fan assembly.
- ▶ Safety interlocks on access doors.

### Common Applications

- ▶ De-scale and de-rust metal surfaces.
- ▶ Remove paint and powder coating.
- ▶ De-burr and de-flash castings and moldings.
- ▶ Decorative finishing of non-ferrous metals.
- ▶ Glass and stone etching.

## Complementary Products



Delta SNH Manual Blast Gun



Delta SNH Auto Blast Gun



PB500HD Blast Cabinet



PB500ES Blast Cabinet



PB1000HD Blast Cabinet



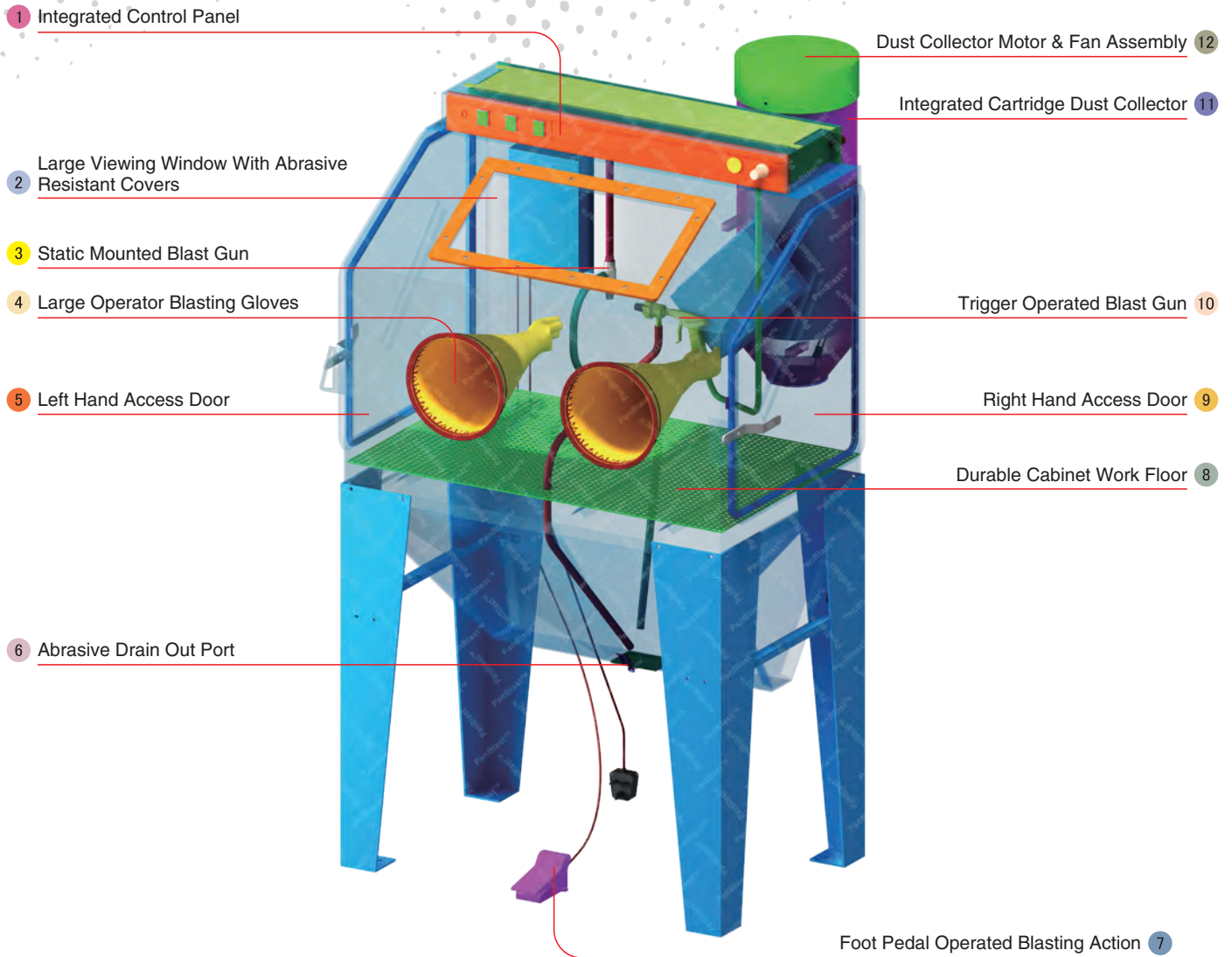
PB1000SP Blast Cabinet



PB1000P Blast Cabinet



PB1500HD Blast Cabinet

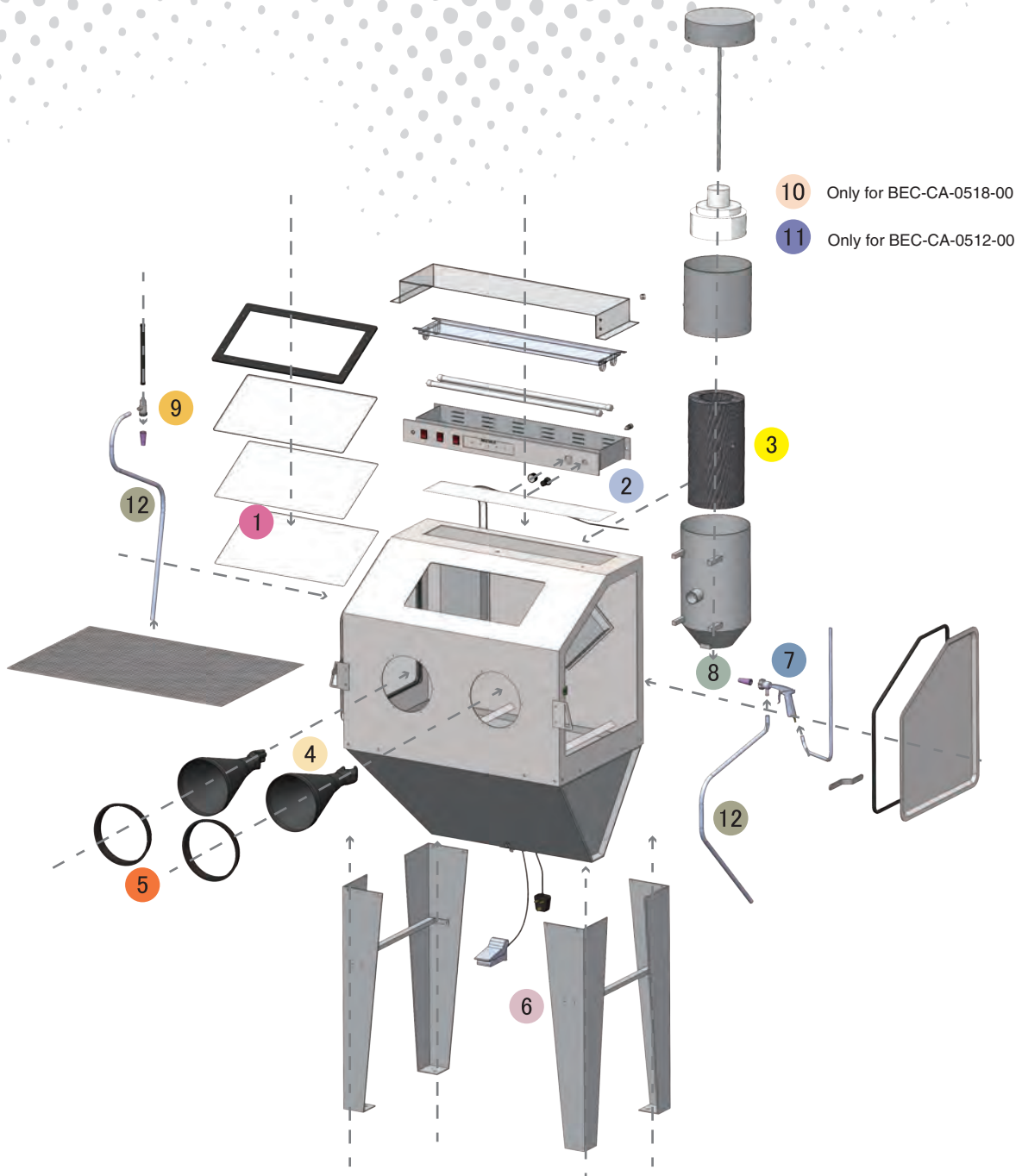
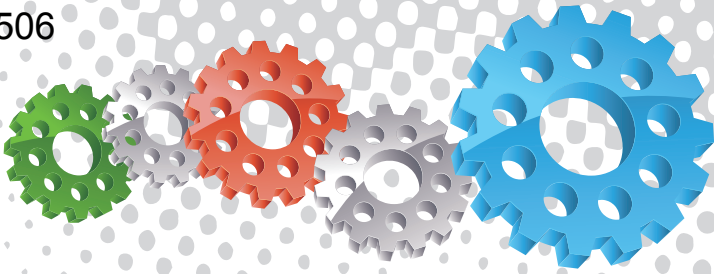


## Component Highlights



- |   |                                       |  |
|---|---------------------------------------|--|
| 1 Integrated Control Panel                            | 5 Left Hand Access Door               | 9 Right Hand Access Door               |
| 2 Large Viewing Window With Abrasive Resistant Covers | 6 Abrasive Drain Out Port             | 10 Trigger Operated Blast Gun          |
| 3 Static Mounted Blast Gun                            | 7 Foot Pedal Operated Blasting Action | 11 Integrated Cartridge Dust Collector |
| 4 Large Operator Blasting Gloves                      | 8 Durable Cabinet Work Floor          | 12 Dust Collector Motor & Fan Assembly |





## Assemblies

Stock Code	Description	Weight
BEC-CA-0518-00	CS37 Blast Cabinet - 110VAC	105 kg (231.48 lbs)
BEC-CA-0512-00	CS37 Blast Cabinet - 230VAC	105 kg (231.48 lbs)

## Optional Accessories

Stock Code	Description
BAC-BG-0120-00	CS37 Tungsten Carbide Fixed Suction Blast Gun Conversion Kit
BAC-DC-0037-01	Dust Collector Motor - 230VAC/1KW CE



## Parts List

Item	Stock Code	Description	Qty
1	BAC-CA-0482-00	Window Cover	1
2	BAC-CA-0527-00	Light Window Cover	1
3	BAC-DF-0022-00	Dust Collector Filter	1
4	BAC-GL-0006-00	Cabinet Gloves	1 pr
5	BAC-CA-0480-00	Glove Clamps	1
6	BAC-CA-0538-00	Electric Foot Pedal	1
7	BAC-BG-0098-00	Suction Gun Assembly w/o Nozzle & Suction Gun Barrel	1
8	BAC-NZ-0508-00	6 mm Ceramic Nozzle	1
9	BAC-BG-0127-00	CS37 Fixed Gun Less Nozzle	1
10	BAC-DC-0036-00	Dust Collector Motor -110VAC	1
11	BAC-DC-0037-00	Dust Collector Motor -230VAC	1
12	BAC-CA-0507-00	Abrasives Delivery Hose	2.2 m

## Technical Data



- Shipping Size:**  
 1280 mm(50") Wide 990 mm (39") Deep  
 760 mm (30") High
- Internal Size:**  
 940 mm (37") Wide 610 mm (24") Deep  
 575 mm (23") High
- Door Size:**  
 500 mm (20") Wide 490 mm (19") High
- Air Consumption:**  
 8.5 L/Sec (18 cfm) @550kPa (80 psi)
- Blast Nozzle Size:**  
 6 mm Ceramic Nozzle
- Cabinet Light:**  
 2 x 18 Watt 230V 50Hz  
 2 x 18 Watt 110V 50Hz
- Cabinet Overall Dimension:**  
 1040 mm (41") Wide 930 mm (37") Deep  
 1650 mm (65") High
- Recommended Floor Area:**  
 2600 mm (102") Wide 1900 mm (75") Deep
- Window Size:**  
 575 mm (23") Wide 265 mm (10") High
- Air Supply Line:**  
 10 mm (3/8")
- Electrical Power:**  
 1Kw 230VAC 1 Phase  
 1Kw 110VAC 1 Phase





## CS48 Blast Cabinets



### Product Features

The PanBlast™ CS48 Blast Cabinet is an economical, light duty blast cabinet, ideally suited to lower production applications or intermittent use. Abrasives commonly used with the CS48 include:

- FastBlast™ Chilled Iron Grit.
- QuickCut™ Aluminium Oxide.
- BrightBlast™ Glass Beads.
- EnviroGrit™ Garnet.
- PanaGrit™ Steel Grit.

- ▶ High performance suction gun assembly.
- ▶ 3 mm (1/8") air tip with 6 mm (1/4") blast nozzle.
- ▶ 1200 watt high performance dust collector with replaceable dry filter cartridge.
- ▶ Extra large 575 mm (22.6") x 265 mm (10.4") viewing window.
- ▶ Tear-off window and cabinet light covers.
- ▶ Compressed air regulator and gauge assembly included.
- ▶ Simple, robust foot pedal blast control.
- ▶ Adjustable abrasive feed.

### Common Applications

- ▶ De-scale and de-rust metal surfaces.
- ▶ Remove paint and powder coating.
- ▶ De-burr and de-flash castings and moldings.
- ▶ Decorative finishing of non-ferrous metals.
- ▶ Glass and stone etching.

## Complementary Products



Delta SNH Manual Blast Gun



Delta SNH Auto Blast Gun



PB500HD Blast Cabinet



PB500ES Blast Cabinet



PB1000HD Blast Cabinet



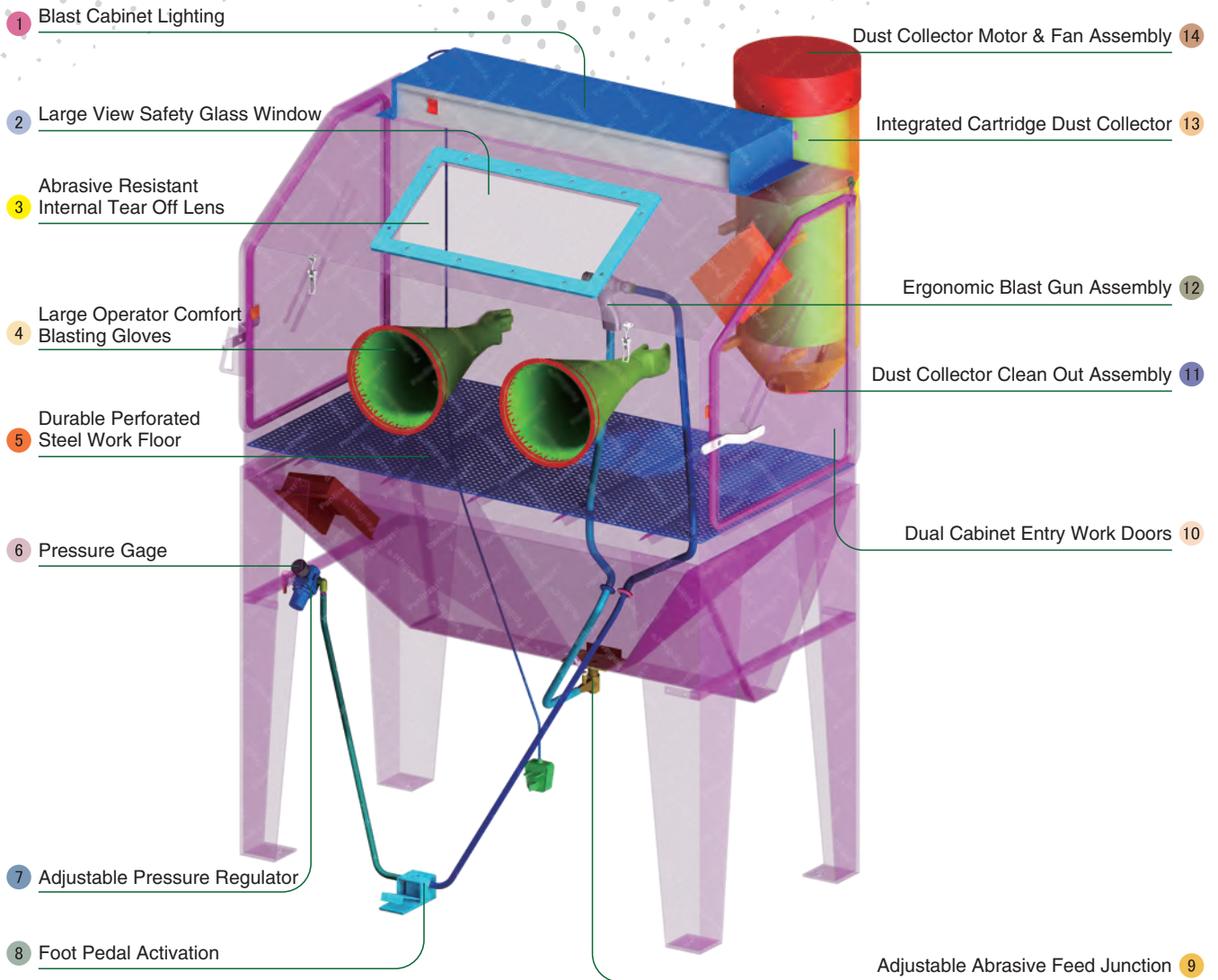
PB1000SP Blast Cabinet



PB1000P Blast Cabinet



PB1500HD Blast Cabinet

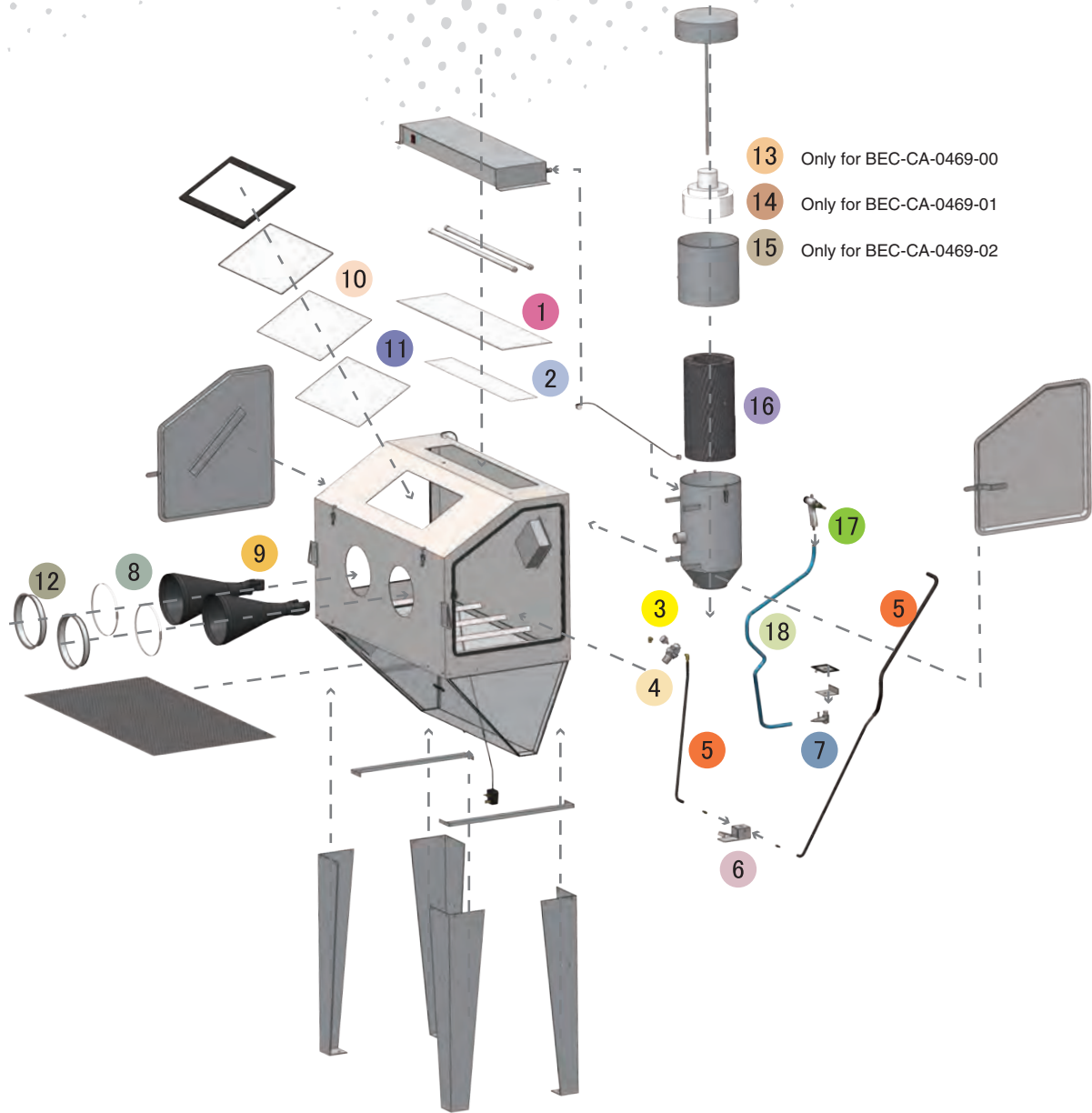
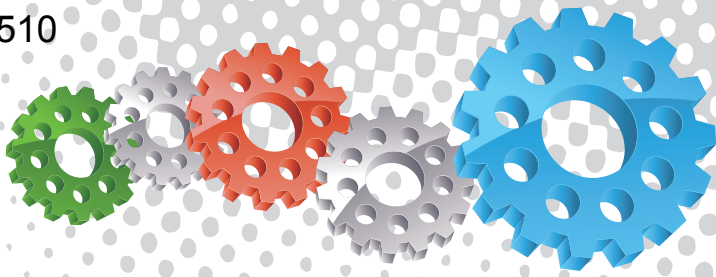


## Component Highlights



- |   |                                     |  |
|---|-------------------------------------|--|
| 1 Blast Cabinet Lighting                    | 6 Pressure Gage                     | 11 Dust Collector Clean Out Assembly   |
| 2 Large View Safety Glass Window            | 7 Adjustable Pressure Regulator     | 12 Ergonomic Blast Gun Assembly        |
| 3 Abrasive Resistant Internal Tear Off Lens | 8 Foot Pedal Activation             | 13 Integrated Cartridge Dust Collector |
| 4 Large Operator Comfort Blasting Gloves    | 9 Adjustable Abrasive Feed Junction | 14 Dust Collector Motor & Fan Assembly |
| 5 Durable Perforated Steel Work Floor       | 10 Dual Cabinet Entry Work Doors    |  |





## Assemblies

Stock Code	Description	Weight
BEC-CA-0469-00	CS48 Blast Cabinet - 110VAC	125 kg (275.58 lbs)
BEC-CA-0469-01	CS48 Blast Cabinet - 230VAC	125 kg (275.58 lbs)
BEC-CA-0469-02	CS48 Blast Cabinet (CE)- 230VAC	155 kg (341.72 lbs)

## Optional Accessories

Stock Code	Description
BAC-CA-0502-00	Cabinet Cyclone Conversion Kit
BAC-BG-0102-00	Delta-A Gun CS 1/8 x 1/4 Tungsten Nozzle
BAC-BG-0114-00	Delta-M Gun CS 1/8 x 1/4 Tungsten Nozzle



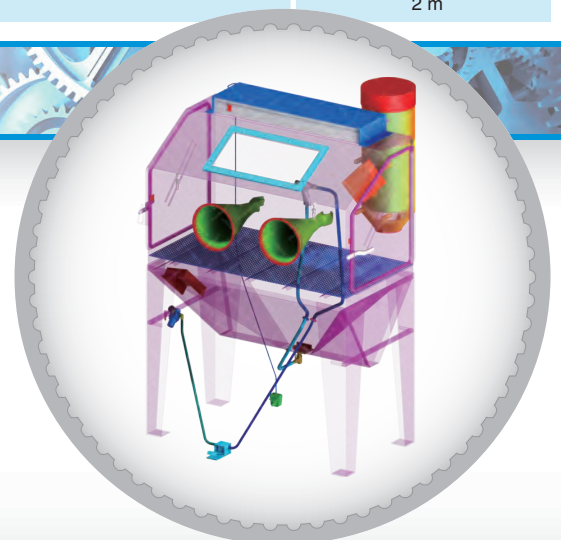
## Parts List

Item	Stock Code	Description	Qty
1	BAC-CA-0478-00	Window	1
2	BAC-CA-0526-00	Light Window Cover	1
3	BAC-PF-PB-0213	3 mm (1/8") Pressure Gauge – Rear Entry	1
4	YAC-AF-PB-0018	3/8" Regulator	1
5	BAC-AF-0377-00	1/2" Air Hose	3.5 m
6	BAC-CA-0479-00	Foot Pedal	1
7	BAC-CA-0515-00	Metering Valve	1
8	BAC-CA-0480-00	Glove Clamps	2
9	BAC-GL-0006-00	Cabinet Gloves	1 pr
10	BAC-CA-0481-00	Glass Window	1
11	BAC-CA-0482-00	Window Cover	1
12	BAC-CA-0513-00	Glove Entry Ring	2
13	BAC-DC-0036-00	Dust Collector Motor -110VAC	1
14	BAC-DC-0037-00	Dust Collector Motor -230VAC	1
15	BAC-DC-0037-01	Dust Collector Motor -230VAC/1KW CE	1
16	BAC-DF-0022-00	Dust Collector Filter	1
17	BAC-BG-0097-00	CS48 Gun Assembly with 6 mm Ceramic Nozzle	1
18	BAC-CA-0507-00	Abrasives Delivery Hose	2 m

## Technical Data



- Shipping Size:**  
 1270 mm (50") Wide 1250 mm (49") Deep  
 760 mm (30") High
- Internal Size:**  
 1215 mm (48") Wide 610 mm (24") Deep  
 575 mm (23") High
- Door Size:**  
 Side Door: 500 mm (20") Wide 490 mm (19") High  
 Top Door: 1150 mm (45") Wide 300 mm (12") High
- Air Consumption:**  
 8.5L/Sec (18 cfm) @550kPa (80 psi)
- Blast Nozzle Size:**  
 6 mm Ceramic Nozzle
- Cabinet Light:**  
 2 x 18 Watt 230V 50Hz  
 2 x 18 Watt 110V 50Hz
- Cabinet Overall Dimension:**  
 1320 mm (52") Wide 930 mm (37") Deep  
 1670 mm (66") High
- Recommended Floor Area:**  
 3100 mm (122") Wide 1900 mm (75") Deep
- Window Size:**  
 575 mm (23") Wide 265 mm (10") High
- Air Supply Line:**  
 10 mm (3/8")
- Electrical Power:**  
 1Kw 230VAC 1 Phase  
 1Kw 110VAC 1 Phase





## PB500ES Blast Cabinet



### Product Features

The PanBlast™ PB 500ES is a light-duty blast cabinet that offers an economical solution for low volume production blasting applications. It is usable with a wide range of media, including:

- FastBlast™ Chilled Iron Grit.
- QuickCut™ Aluminium Oxide.
- BrightBlast™ Glass Beads.
- EnviroGrit™ Garnet.
- PanaGrit™ Cast Steel Grit.

- ▶ Safety door interlock.
- ▶ Integral sock-type dust collector to maintain visibility.
- ▶ Heavy duty, wear resistant rubber gloves.
- ▶ Quick-change laminated glass viewing window – no tools required.
- ▶ Fully adjustable abrasive feed tee.
- ▶ Compatible with virtually any abrasive type.
- ▶ Compressed air regulator and gauge included.
- ▶ High performance PanBlast™ Delta suction blast gun.

### Common Applications

- ▶ De-scale and de-rust metal.
- ▶ Remove paint and coatings.
- ▶ Remove burrs, flashings and sand from castings and moldings.
- ▶ Decorative finishing of non-ferrous metals.
- ▶ Stone and glass etching.
- ▶ Mold cleaning.

### Complementary Products



Delta GDF Manual Blast Gun



Delta GDF Auto Blast Gun



Delta SNH Manual Blast Gun



Delta SNH Auto Blast Gun



AER85 Vacuum Blaster



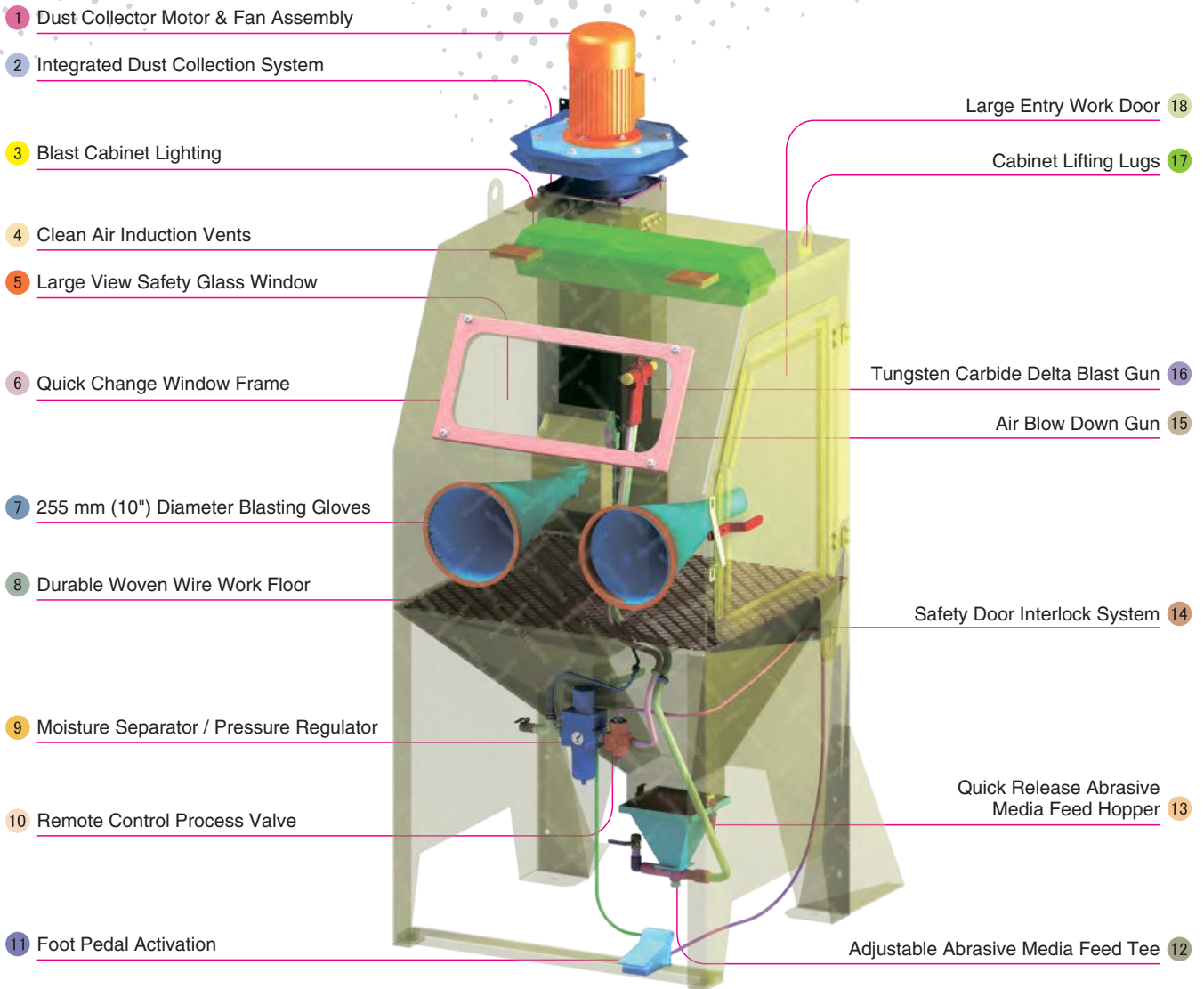
Moisture Separator



Cabinet Window Cover



Pow Air Vac

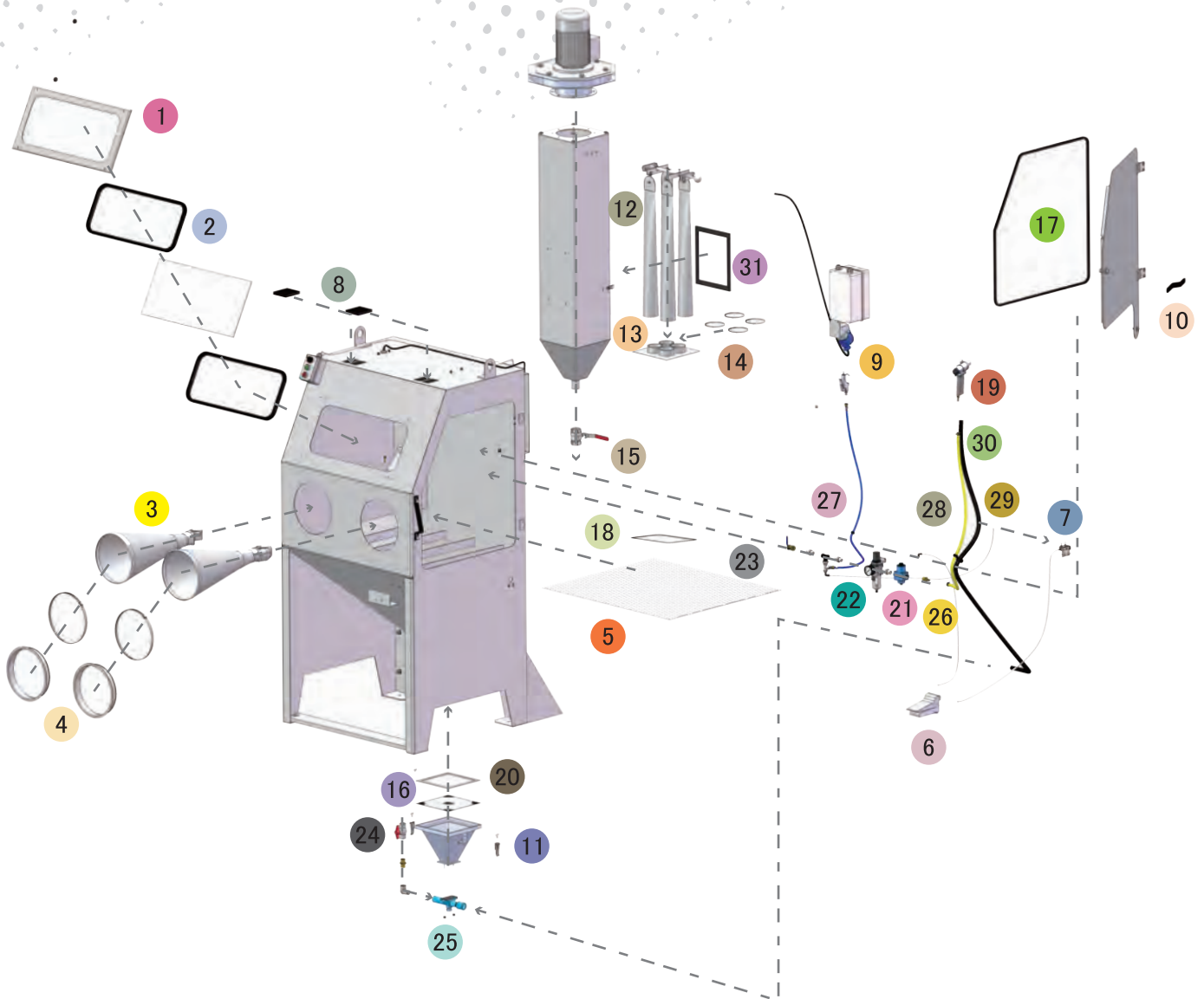
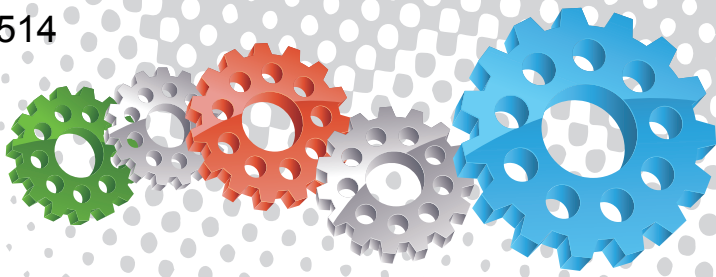


## Component Highlights



- |                                       |   |   |
|---------------------------------------|---|---|
| 1 Dust Collector Motor & Fan Assembly | 7 255 mm (10") Diameter Blasting Gloves   | 13 Quick Release Abrasive Media Feed Hopper |
| 2 Integrated Dust Collection System   | 8 Durable Woven Wire Work Floor           | 14 Safety Door Interlock System             |
| 3 Blast Cabinet Lighting              | 9 Moisture Separator / Pressure Regulator | 15 Air Blow Down Gun                        |
| 4 Clean Air Induction Vents           | 10 Remote Control Process Valve           | 16 Tungsten Carbide Delta Blast Gun         |
| 5 Large View Safety Glass Window      | 11 Foot Pedal Activation                  | 17 Cabinet Lifting Lugs                     |
| 6 Quick Change Window Frame           | 12 Adjustable Abrasive Media Feed Tee     | 18 Large Entry Work Door                    |





## Assembly

Stock Code	Description	Weight
BEC-CA-PB-0008	PB500ES Blast Cabinet Assembly	440 kg (970 lbs)

## Optional Accessories

Stock Code	Description	Stock Code	Description
BAC-CA-PB-0427	Fixed Turntable	BAC-CA-PB-0428	Rubber Lined Cabinet
BAC-CA-PB-0277	Cabinet Gun Stand	BAC-CA-PB-0455	Foot Valve Guard
BAC-CA-PB-0335	Dust Collector Silencer Kit	BAC-DC-0002-01	Single Cartridge Auto-Reverse Pulse Kit



## Parts List

Item	Stock Code	Description	Qty
1	BAC-CA-PB-0156	Rectangular Window	1
2	BAC-CA-PB-0161	Cabinet Window Seal	2
3	BAC-GL-PB-0003	10" Ø Cabinet Rubber Gloves	1 pr
4	BAC-CA-PB-0157	Cabinet Entry Ring	2
5	BAC-CA-PB-0155	Cabinet Floor Mesh	1
6	BAC-CA-PB-0086	Foot Valve Spring Return	1
7	YAC-CA-PB-0219	Door Interlock Valve	1
8	BAC-CA-PB-0158	Air Entry Filter	2
9	YAC-CA-PB-0145	1/4" Blow Off Gun	1
10	YAC-CA-PB-0439	Handle	1
11	YAC-FN-PB-0041	Toggle Catch	2
12	BAC-DF-PB-0012	Dust Bag - 80 mm DIA	4
13	YAC-CA-PB-0270	Toggle Clamp & Latch Set	1
14	YAC-FN-PB-0144	Hose Clamp	4
15	BAC-PF-PB-0008	38 mm (1-1/2") Ball Valve	1
16	BAC-CA-PB-0117	PB500/PB1000 Hopper-Screen Detail	1
17	BAC-CA-PB-0164	Cabinet Door Seal	1
18	YAC-CA-0474-00	Rubber Seal	0.3 m
19	BAC-BG-PB-0056	Delta-M Gun GDF 1/8 x 1/4 Assembly	1
20	YAC-CA-PB-0106	Hopper Gasket	1
21	BAC-RC-PB-0142	Sola 5 Inlet Valve Sub Assembly	1
22	BAC-AF-PB-0048	9.5 mm (3/8") Filter Regulator With Gauge	1
23	BAC-PF-PB-0021	10 mm (3/8") Ball Valve	1
24	YAC-PF-PB-0026	PVC Ball Valve	1
25	BAC-CA-PB-0220	Feed Tee Assembly	1
26	YAC-PF-PB-0224	Hose Barb	1
27	YAC-PF-PB-0125	1/4" NB Air Hose	1.5 m
28	BAC-AF-PB-0164	Air Hose 10 mm 250 PSI Impact Blue	1.5 m
29	BAC-CA-0586-00	Abrasives Hose	1
30	YAC-FN-PB-0263	O-Clip	2
31	BAC-CA-PB-0405	Dust Collector Door Seal	1

## Technical Data



- **Optional Turntable Load:**  
250 kg (551 lbs)
- **Internal Size:**  
900 mm (35") Wide 783 mm (31") Deep  
730 mm (29") High
- **Door Size:**  
645 mm (25") Wide 730 mm (29") High
- **Air Consumption:**  
36 m<sup>3</sup>/hr (21 cfm) @550kPa (80 psi)
- **Suction Gun / Nozzle Size:**  
BAC-BG-PB-0056 Delta Manual Gun 1/8" x 1/4"
- **Cabinet Light:**  
2 x 18Watt 230V 50Hz
- **Cabinet Overall Dimension:**  
1000 mm (40") Wide 1130 mm (45") Deep  
2220 mm (88") High
- **Recommended Floor Area:**  
2300 mm (91") Wide 2100 mm (83") Deep
- **Window Size:**  
600 mm (24") Wide 250 mm (10") High
- **Air Supply Line:**  
10 mm (3/8")
- **Electrical Power:**  
0.55Kw (0.75 hp) 230VAC 50 Hz 2Pole 1 Phase





## PB500SP Blast Cabinet



### Product Features

The PanBlast™ PB500SP is a light-duty blast cabinet that offers an economical solution for low-to-medium volume production blasting applications with upgraded operator visibility and cleaning convenience from the reverse pulse jet dust collector providing cabinet ventilation. It is usable with a wide range of media, including:

- FastBlast™ Chilled Iron Grit.
- BrightBlast™ Glass Beads.
- PanaGrit™ Cast Steel Grit.
- EnviroGrit™ Garnet.
- QuickCut™ Aluminium Oxide.

- ▶ Safety door interlock.
- ▶ Integral dry cartridge reverse pulse dust collector for clear visibility.
- ▶ Heavy duty, wear resistant rubber gloves.
- ▶ Quick-change laminated glass viewing window – no tools required.
- ▶ Fully adjustable abrasive feed tee.
- ▶ Compatible with virtually any abrasive type.
- ▶ Compressed air regulator and gauge included.
- ▶ High performance PanBlast™ Delta suction blast gun.

### Common Applications

- ▶ De-scale and de-rust metal.
- ▶ Remove paint and coatings.
- ▶ Remove burrs, flashings and sand from castings and moldings.
- ▶ Decorative finishing of non-ferrous metals.
- ▶ Stone and glass etching.
- ▶ Mold cleaning.

### Complementary Products



Delta GDF Manual Blast Gun



Delta GDF Auto Blast Gun



Delta SNH Manual Blast Gun



Delta SNH Auto Blast Gun



Filter Cartridge



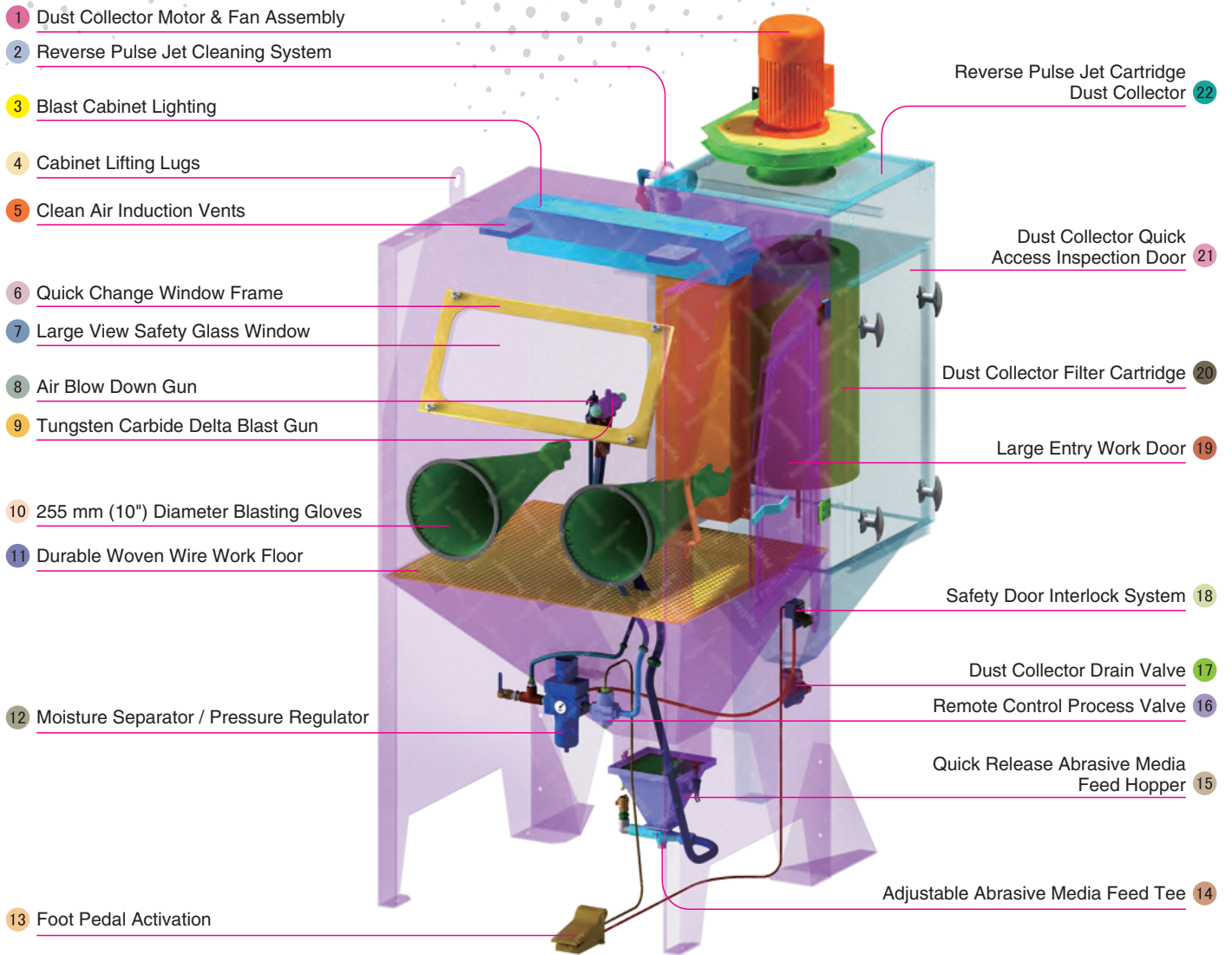
Moisture Separator



Cabinet Window Cover



Pow Air Vac

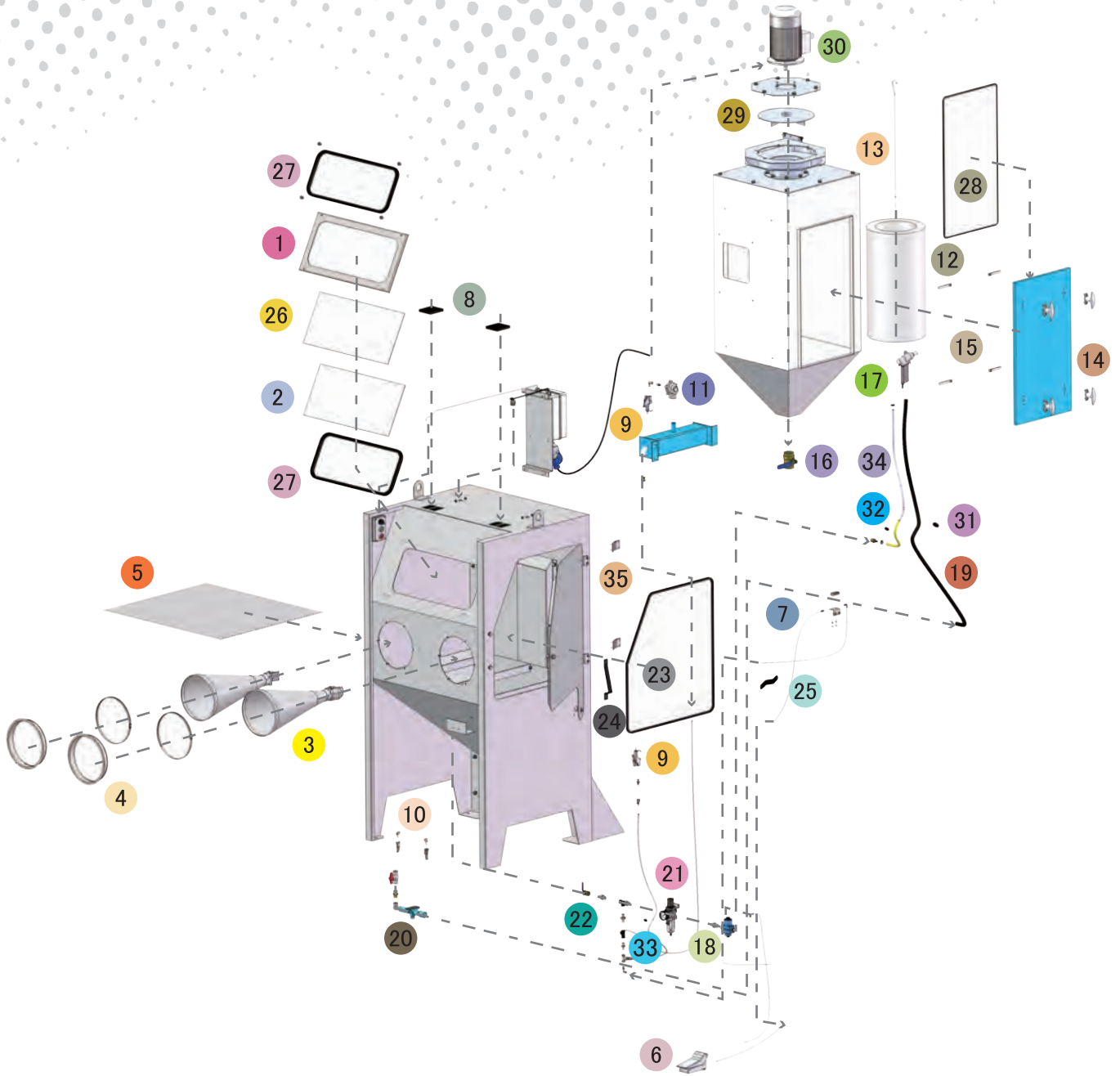
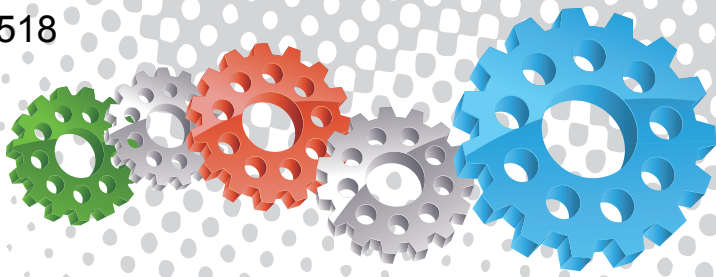


## Component Highlights



- |                                       |   |  |
|---------------------------------------|---|--|
| 1 Dust Collector Motor & Fan Assembly | 9 Tungsten Carbide Delta Blast Gun          | 17 Dust Collector Drain Valve                  |
| 2 Reverse Pulse Jet Cleaning System   | 10 255 mm (10") Diameter Blasting Gloves    | 18 Safety Door Interlock System                |
| 3 Blast Cabinet Lighting              | 11 Durable Woven Wire Work Floor            | 19 Large Entry Work Door                       |
| 4 Cabinet Lifting Lugs                | 12 Moisture Separator / Pressure Regulator  | 20 Dust Collector Filter Cartridge             |
| 5 Clean Air Induction Vents           | 13 Foot Pedal Activation                    | 21 Dust Collector Quick Access Inspection Door |
| 6 Quick Change Window Frame           | 14 Adjustable Abrasive Media Feed Tee       | 22 Reverse Pulse Jet Cartridge Dust Collector  |
| 7 Large View Safety Glass Window      | 15 Quick Release Abrasive Media Feed Hopper |  |
| 8 Air Blow Down Gun                   | 16 Remote Control Process Valve             |  |





## Assembly

Stock Code	Description	Weight
BEC-CA-PB-0017	PB500SP Blast Cabinet Assembly	325 kg (717 lbs)

## Optional Accessories

Stock Code	Description	Stock Code	Description
BAC-CA-PB-0427	Fixed Turntable	BAC-CA-PB-0428	Rubber Lined Cabinet
BAC-CA-PB-0277	Cabinet Gun Stand	BAC-CA-PB-0455	Foot Valve Guard
BAC-CA-PB-0335	Dust Collector Silencer Kit	BAC-DC-0002-01	Single Cartridge Auto-Reverse Pulse Kit



## Parts List

Item	Stock Code	Description	Qty
1	YAC-CA-PB-0153	Window Frame	1
2	BAC-CA-PB-0156	Rectangular Window	1
3	BAC-GL-PB-0003	10" Ø Cabinet Rubber Gloves	1 pr
4	BAC-CA-PB-0157	Cabinet Entry Ring	2
5	BAC-CA-PB-0155	Cabinet Floor Mesh	1
6	BAC-CA-PB-0086	Foot Valve Spring Return	1
7	YAC-CA-PB-0219	Door Interlock Valve	1
8	BAC-CA-PB-0158	Air Entry Filter	2
9	YAC-CA-PB-0145	1/4" Blow Off Gun	2
10	YAC-FN-PB-0041	Toggle Catch	2
11	BAC-DC-PB-0007	Pulse Valve	1
12	BAC-DF-PB-0002	Filter Cartridge - Size 2	1
13	BAC-DC-PB-0031	Hanger Rod	1
14	YAC-CA-PB-0146	Handle	4
15	YAC-CA-PB-0205	Handle Tongue	4
16	BAC-PF-PB-0008	38 mm (1-1/2") Ball Valve	1
17	BAC-BG-PB-0056	Delta-M Gun GDF 1/8 X 1/4 Assembly	1
18	BAC-RC-PB-0142	Sola5 Inlet Valve Sub Assembly	1
19	BAC-CA-0586-00	Abrasives Hose	1
20	BAC-CA-PB-0220	Feed Tee Assembly	1
21	BAC-AF-PB-0048	9.5 mm (3/8") Filter Regulator With Gauge	1
22	BAC-PF-PB-0021	10 mm (3/8") Ball Valve	1
23	BAC-CA-PB-0164	Cabinet Door Seal	1
24	YAC-CA-PB-0440	Door Latch	1
25	YAC-CA-PB-0439	Handle	1
26	BAC-CA-PB-0390	570 X 220 Window Cover – 5pcs	1
27	BAC-CA-PB-0161	Cabinet Window Seal	2
28	BAC-CA-PB-0406	Dust Collector Door Seal	1
29	YAC-CA-PB-0184	Fan Impellor – 240CFM Aluminium	1
30	YAC-CA-PB-0142	230VAC 1PH 50HZ Motor	1
31	BAC-CA-PB-0135	Rubber Sealing Grommet	1
32	YAC-CA-PB-0423	16 mm Grommet	1
33	YAC-CA-0477-00	Grommet	1
34	BAC-AF-PB-0164	Air Hose 10 mm 250 psi Impact Blue	1.5 m
35	YAC-CA-PB-0160	Hinge	2

## Technical Data



- Optional Turntable Load:**  
 250 kg (551 lbs)
- Internal Size:**  
 900 mm (35") Wide 783 mm (31") Deep  
 730 mm (29") High
- Door Size:**  
 645 mm (25") Wide 730 mm (29") High
- Air Consumption:**  
 36 m<sup>3</sup>/hr (21 cfm) @550kPa (80 psi)
- Suction Gun / Nozzle Size:**  
 BAC-BG-PB-0056 Delta Manual Gun 1/8" x 1/4"
- Cabinet Light:**  
 2 x 18Watt 230V 50Hz
- Cabinet Overall Dimension:**  
 1000 mm (40") Wide 1360 mm (54") Deep  
 2220 mm (88") High
- Recommended Floor Area:**  
 2300 mm (91") Wide 2300 mm (91") Deep
- Window Size:**  
 600 mm (24") Wide 250 mm (10") High
- Air Supply Line:**  
 10 mm (3/8")
- Electrical Power:**  
 0.55Kw (0.75hp) 230VAC 50Hz 2 Pole 1 Phase





## PB1000SP Blast Cabinet



### Product Features

The PanBlast™ PB1000SP Suction Blast Cabinet is an economical, mid-sized suction blast cabinet, ideally suited for low-to-medium volume production blasting applications with upgraded operator visibility and cleaning convenience from the reverse pulse jet dust collector providing cabinet ventilation. It is usable with a wide range of media, including:

- FastBlast™ Chilled Iron Grit.
- QuickCut™ Aluminium Oxide.
- Safety door interlock.
- EnviroGrit™ Garnet.
- PanaGrit™ Cast Steel Grit.
- BrightBlast™ Glass Beads.

- ▶ Integral dry cartridge reverse pulse dust collector maintains clear visibility.
- ▶ Heavy duty wear resistant rubber gloves.
- ▶ Quick-change laminated glass viewing window - no tools required.
- ▶ Fully adjustable abrasive feed.
- ▶ Compressed air regulator and gauge.
- ▶ High performance PanBlast™ Delta Suction Gun.
- ▶ Standard air blow down gun.

### Common Applications

- ▶ De-scale and de-rust metal.
- ▶ Remove paint and coatings.
- ▶ Remove burrs, flashings and sand from castings and moldings.
- ▶ Decorative finishing of non-ferrous metals.
- ▶ Stone and glass etching.
- ▶ Mold cleaning.

### Complementary Products



Delta GDF Manual Blast Gun



Delta GDF Auto Blast Gun



Delta SNH Manual Blast Gun



Delta SNH Auto Blast Gun



Filter Cartridge



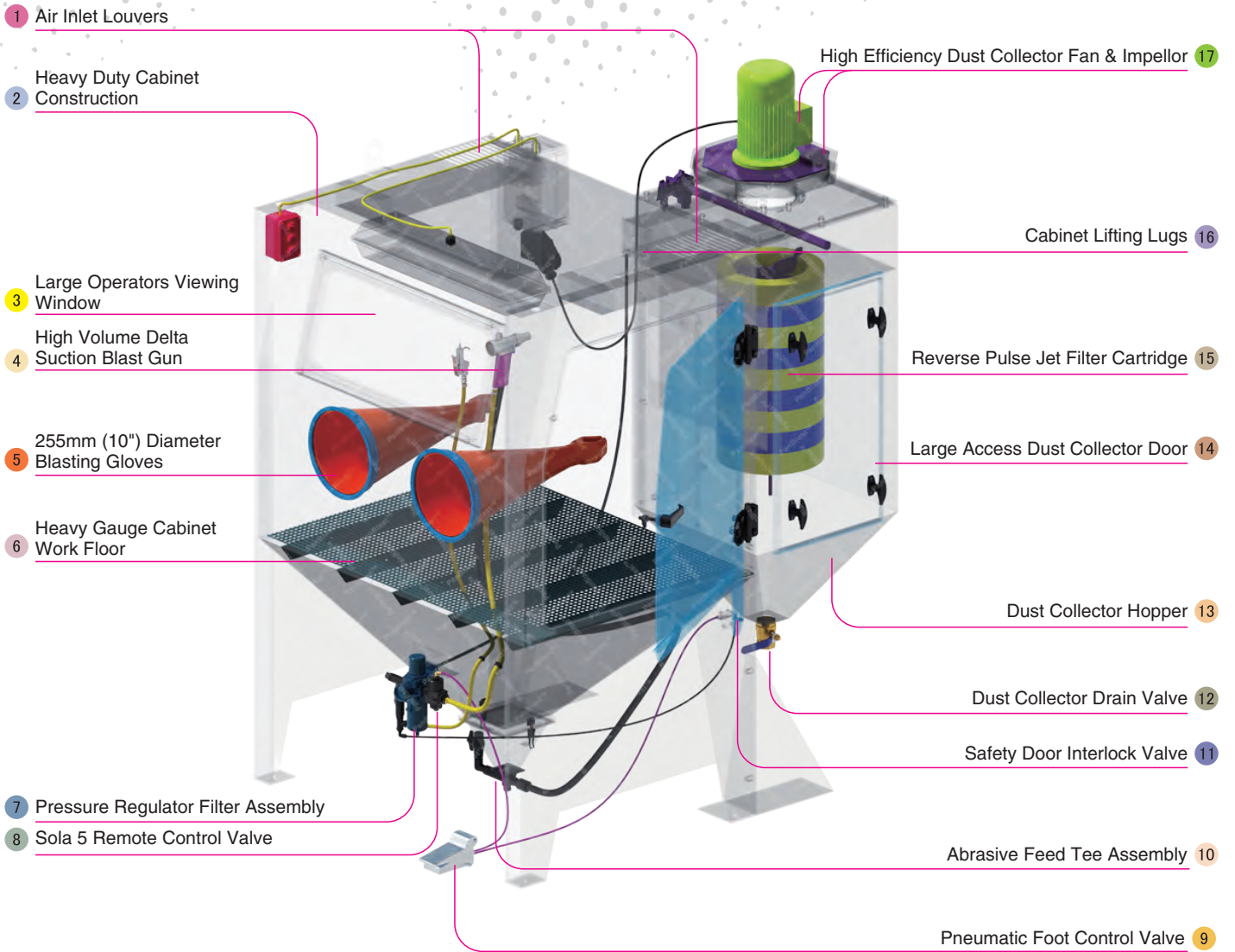
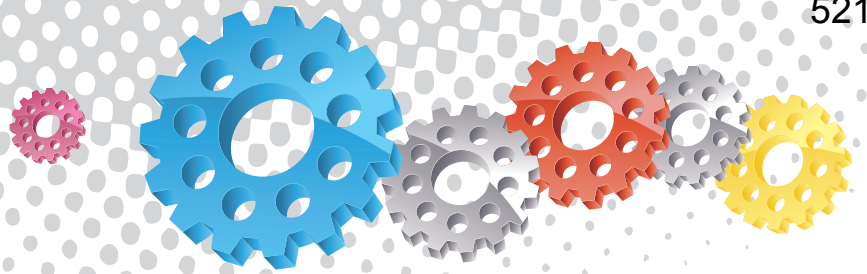
Moisture Separator



Cabinet Window Cover



Pow Air Vac

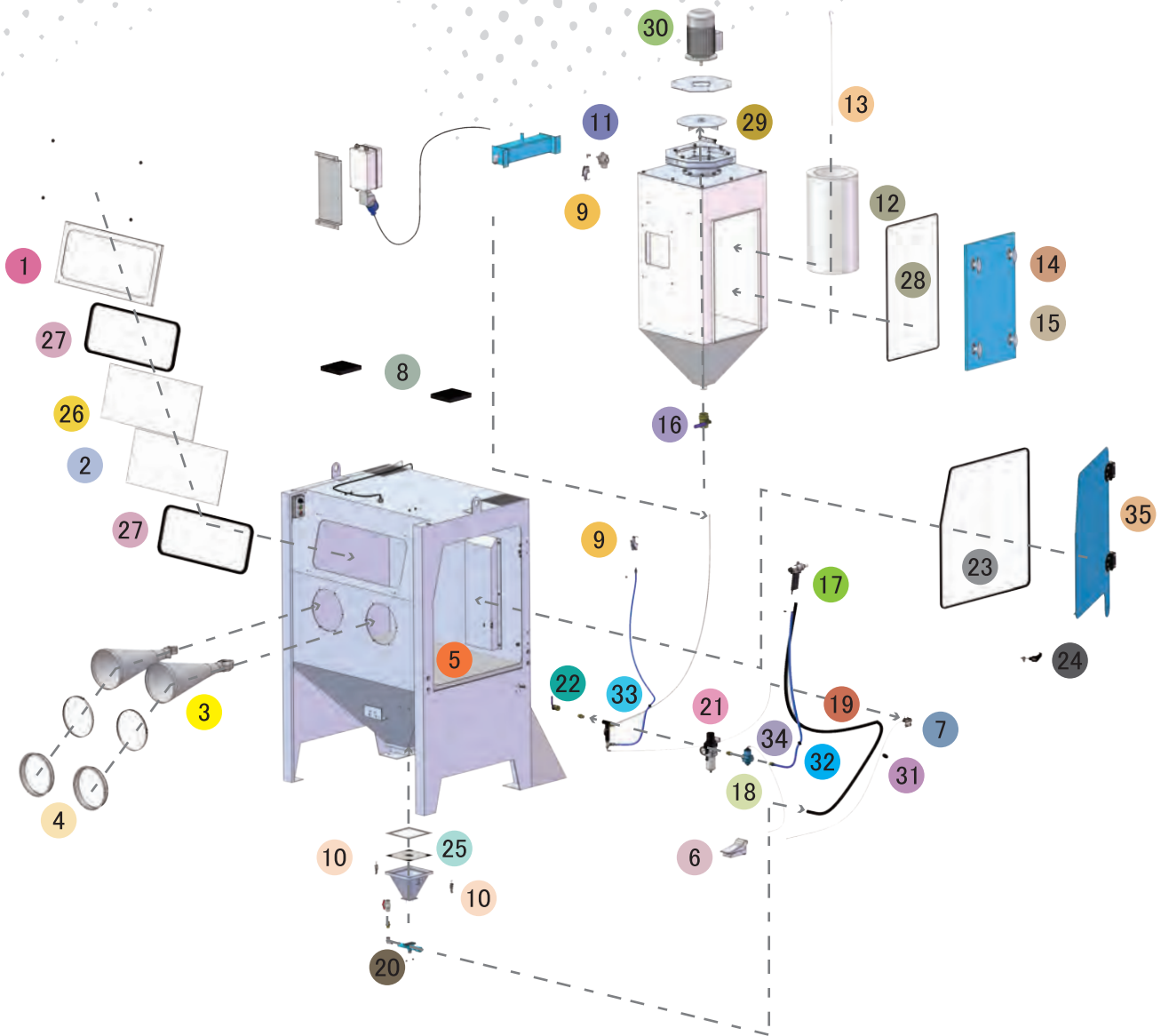
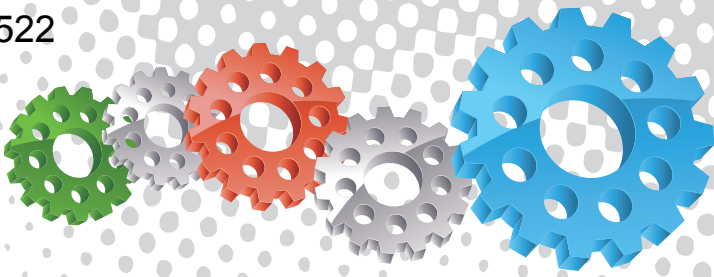


## Component Highlights



- |   |                                      |  |
|---|--------------------------------------|--|
| 1 Air Inlet Louvers                     | 7 Pressure Regulator Filter Assembly | 13 Dust Collector Hopper                         |
| 2 Heavy Duty Cabinet Construction       | 8 Sola 5 Remote Control Valve        | 14 Large Access Dust Collector Door              |
| 3 Large Operators Viewing Window        | 9 Pneumatic Foot Control Valve       | 15 Reverse Pulse Jet Filter Cartridge            |
| 4 High Volume Delta Suction Blast Gun   | 10 Abrasive Feed Tee Assembly        | 16 Cabinet Lifting Lugs                          |
| 5 255 mm (10") Diameter Blasting Gloves | 11 Safety Door Interlock Valve       | 17 High Efficiency Dust Collector Fan & Impellor |
| 6 Heavy Gauge Cabinet Work Floor        | 12 Dust Collector Drain Valve        |  |





## Assembly

Stock Code	Description	Weight
BEC-CA-PB-0001	PB1000SP Blast Cabinet Assembly	485 kg (1069 lbs)

## Optional Accessories

Stock Code	Description	Stock Code	Description
BAC-CA-PB-0180	Track & Trolley	BAC-CA-PB-0040	Tumble Basket Ø300 mm x 325 mm
BAC-CA-PB-0244	Fixed Turntable Kit	BAC-CA-PB-0455	Foot Valve Guard
BAC-CA-PB-0277	Cabinet Gun Stand	BAC-CA-PB-0292	Operator Sound Kit
BAC-CA-PB-0241	Dust Collector Silencer Kit	BAC-CA-PB-0278	Rubber Lined Cabinet
BAC-CA-PB-0243	Tumble Basket Ø350 mm x 375 mm	BAC-DC-0002-01	Single Cartridge Auto-Reverse Pulse Kit



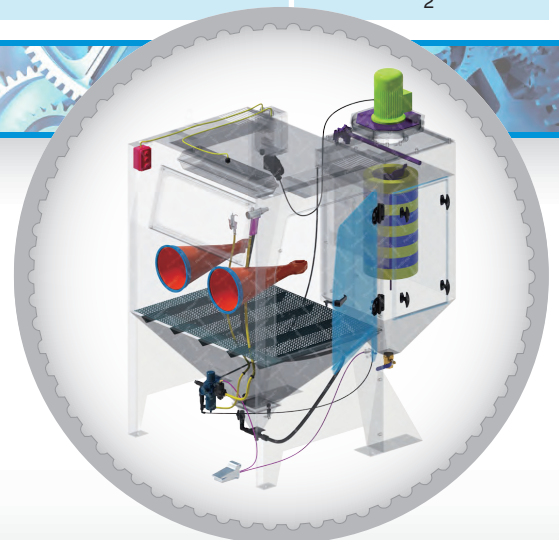
## Parts List

Item	Stock Code	Description	Qty
1	YAC-CA-PB-0101	Window Frame	1
2	BAC-CA-PB-0137	Rectangular Window	1
3	BAC-GL-PB-0003	10" Ø Cabinet Rubber Gloves	1 pr
4	BAC-CA-PB-0157	Cabinet Entry Ring	2
5	BAC-CA-PB-0126	Cabinet Floor Mesh	1
6	BAC-CA-PB-0086	Foot Valve Spring Return	1
7	YAC-CA-PB-0219	Door Interlock Valve	1
8	BAC-CA-PB-0140	Air Entry Filter	2
9	YAC-CA-PB-0145	1/4" Blow Off Gun	2
10	YAC-FN-PB-0041	Toggle Catch	2
11	BAC-DC-PB-0007	Pulse Valve	1
12	BAC-DF-PB-0002	Filter Cartridge - Size 2	1
13	BAC-DC-PB-0031	Hanger Rod	1
14	YAC-CA-PB-0146	Handle	4
15	YAC-CA-PB-0205	Handle Tongue	4
16	BAC-PF-PB-0008	38 mm (1-1/2") Ball Valve	1
17	BAC-BG-PB-0056	Delta-M Gun GDF 1/8 X 1/4 Assembly	1
18	BAC-RC-PB-0142	Sola5 Inlet Valve Sub Assembly	1
19	BAC-CA-0587-00	Abrasives Hose	1
20	BAC-CA-PB-0220	Feed Tee Assembly	1
21	BAC-AF-PB-0047	13 mm (1/2") Filter Regulator With Gauge	1
22	BAC-PF-PB-0001	13 mm (1/2") Ball Valve	1
23	BAC-CA-PB-0178	Cabinet Door Seal	1
24	YAC-CA-PB-0138	Latch	1
25	BAC-CA-PB-0117	PB500/PB1000 Hopper-Screen Detail	1
26	BAC-CA-PB-0392	720 X 270 Window Cover – 5pcs	1
27	BAC-CA-PB-0141	Cabinet Window Seal	2
28	BAC-CA-PB-0406	Dust Collector Door Seal	1
29	YAC-CA-PB-0184	Fan Impellor – 240 CFM Aluminium	1
30	YAC-CA-PB-0142	230VAC 1PH 50HZ Motor	1
31	BAC-CA-PB-0135	Rubber Sealing Grommet	1
32	YAC-CA-PB-0423	16 mm Grommet	1
33	YAC-CA-0477-00	Grommet	1
34	BAC-AF-PB-0164	Air Hose 10 mm 250psi Impact Blue	1.5 m
35	BAC-CA-PB-0296	Hinge Assembly	2

## Technical Data



- Optional Turntable Load:**  
 250 kg (551 lbs)
- Internal Size:**  
 1100 mm (43") Wide 920 mm (36") Deep  
 890 mm (35") High
- Door Size:**  
 755 mm (30") Wide 855 mm (34") High
- Air Consumption:**  
 36 m<sup>3</sup>/hr (21cfm) @ 550 kPa (80 psi)
- Suction Gun / Nozzle Size:**  
 BAC-BG-PB-0056 Delta Manual Gun 1/8" x 1/4"
- Cabinet Light:**  
 2 x 18Watt 230V 50Hz
- Cabinet Overall Dimension:**  
 1300 mm (52") Wide 1470 mm (58") Deep  
 2220 mm (88") High
- Recommended Floor Area:**  
 2900 mm (114") Wide 2400 mm (95") Deep
- Window Size:**  
 750 mm (30") Wide 300 mm (12") High
- Air Supply Line:**  
 10 mm (3/8")
- Electrical Power:**  
 0.55Kw (0.75hp) 230VAC 50Hz 2 Pole 1 Phase



Архангельск (8182)63-90-72  
Астана (7172)727-132  
Астрахань (8512)99-46-04  
Барнаул (3852)73-04-60  
Белгород (4722)40-23-64  
Брянск (4832)59-03-52  
Владивосток (423)249-28-31  
Волгоград (844)278-03-48  
Вологда (8172)26-41-59  
Воронеж (473)204-51-73  
Екатеринбург (343)384-55-89  
Иваново (4932)77-34-06

Ижевск (3412)26-03-58  
Иркутск (395)279-98-46  
Казань (843)206-01-48  
Калининград (4012)72-03-81  
Калуга (4842)92-23-67  
Кемерово (3842)65-04-62  
Киров (8332)68-02-04  
Краснодар (861)203-40-90  
Красноярск (391)204-63-61  
Курск (4712)77-13-04  
Липецк (4742)52-20-81

Киргизия (996)312-96-26-47

Магнитогорск (3519)55-03-13  
Москва (495)268-04-70  
Мурманск (8152)59-64-93  
Набережные Челны (8552)20-53-41  
Нижний Новгород (831)429-08-12  
Новокузнецк (3843)20-46-81  
Новосибирск (383)227-86-73  
Омск (3812)21-46-40  
Орел (4862)44-53-42  
Оренбург (3532)37-68-04  
Пенза (8412)22-31-16

Россия (495)268-04-70

Пермь (342)205-81-47  
Ростов-на-Дону (863)308-18-15  
Рязань (4912)46-61-64  
Самара (846)206-03-16  
Санкт-Петербург (812)309-46-40  
Саратов (845)249-38-78  
Севастополь (8692)22-31-93  
Симферополь (3652)67-13-56  
Смоленск (4812)29-41-54  
Сочи (862)225-72-31  
Ставрополь (8652)20-65-13

Казахстан (772)734-952-31

Сургут (3462)77-98-35  
Тверь (4822)63-31-35  
Томск (3822)98-41-53  
Тула (4872)74-02-29  
Тюмень (3452)66-21-18  
Ульяновск (8422)24-23-59  
Уфа (347)229-48-12  
Хабаровск (4212)92-98-04  
Челябинск (351)202-03-61  
Череповец (8202)49-02-64  
Ярославль (4852)69-52-93

[www.panblast.nt-rt.ru](http://www.panblast.nt-rt.ru) | | [pav@nt-rt.ru](mailto:pav@nt-rt.ru)