

Архангельск (8182)63-90-72
Астана (7172)727-132
Астрахань (8512)99-46-04
Барнаул (3852)73-04-60
Белгород (4722)40-23-64
Брянск (4832)59-03-52
Владивосток (423)249-28-31
Волгоград (844)278-03-48
Вологда (8172)26-41-59
Воронеж (473)204-51-73
Екатеринбург (343)384-55-89
Иваново (4932)77-34-06

Ижевск (3412)26-03-58
Иркутск (395)279-98-46
Казань (843)206-01-48
Калининград (4012)72-03-81
Калуга (4842)92-23-67
Кемерово (3842)65-04-62
Киров (8332)68-02-04
Краснодар (861)203-40-90
Красноярск (391)204-63-61
Курск (4712)77-13-04
Липецк (4742)52-20-81

Киргизия (996)312-96-26-47

Магнитогорск (3519)55-03-13
Москва (495)268-04-70
Мурманск (8152)59-64-93
Набережные Челны (8552)20-53-41
Нижний Новгород (831)429-08-12
Новокузнецк (3843)20-46-81
Новосибирск (383)227-86-73
Омск (3812)21-46-40
Орел (4862)44-53-42
Оренбург (3532)37-68-04
Пенза (8412)22-31-16

Россия (495)268-04-70

Пермь (342)205-81-47
Ростов-на-Дону (863)308-18-15
Рязань (4912)46-61-64
Самара (846)206-03-16
Санкт-Петербург (812)309-46-40
Саратов (845)249-38-78
Севастополь (8692)22-31-93
Симферополь (3652)67-13-56
Смоленск (4812)29-41-54
Сочи (862)225-72-31
Ставрополь (8652)20-65-13

Казахстан (772)734-952-31

Сургут (3462)77-98-35
Тверь (4822)63-31-35
Томск (3822)98-41-53
Тула (4872)74-02-29
Тюмень (3452)66-21-18
Ульяновск (8422)24-23-59
Уфа (347)229-48-12
Хабаровск (4212)92-98-04
Челябинск (351)202-03-61
Череповец (8202)49-02-64
Ярославль (4852)69-52-93

www.panblast.nt-rt.ru | | pav@nt-rt.ru

Технические характеристики на дробеструйные шкафы для тяжелых условий эксплуатации компании PanBlast



PB500HD Blast Cabinet



Product Features

The PanBlast™ PB500HD Suction Blast Cabinet is the smallest of our Heavy Duty line, providing efficiency in a general purpose, industrial use blast cabinet. It is compatible with a wide range of media, including:

- *FastBlast™ Chilled Iron Grit
- *PanaGrit™ Cast Steel Grit
- *QuickCut™ Aluminium Oxide
- *BrightBlast™ Glass Beads
- *EnviroGrit™ Garnet

- ▶ Cyclone type abrasive separator cleans the abrasive during use.
- ▶ Safety door interlock.
- ▶ Integral dry cartridge reverse pulse dust collector for clear visibility.
- ▶ Heavy duty, wear resistant rubber gloves.
- ▶ Quick-change laminated glass viewing window - no tools required.
- ▶ Fully adjustable abrasive feed tee.
- ▶ Compressed air regulator and gauge.
- ▶ High performance PanBlast™ Delta Suction Gun.
- ▶ Standard air blow down gun.

Common Applications

- ▶ De-scale and de-rust metal.
- ▶ Remove paint and coatings.
- ▶ Remove burrs, flashings and sand from castings and moldings.
- ▶ Decorative finishing of non-ferrous metals.
- ▶ Stone and glass etching.
- ▶ Mold cleaning.

Complementary Products



Delta SNH Manual Blast Gun



Delta SNH Auto Blast Gun



Filter Cartridge



Delta GDF Auto Blast Gun



Dust Collector Silencer



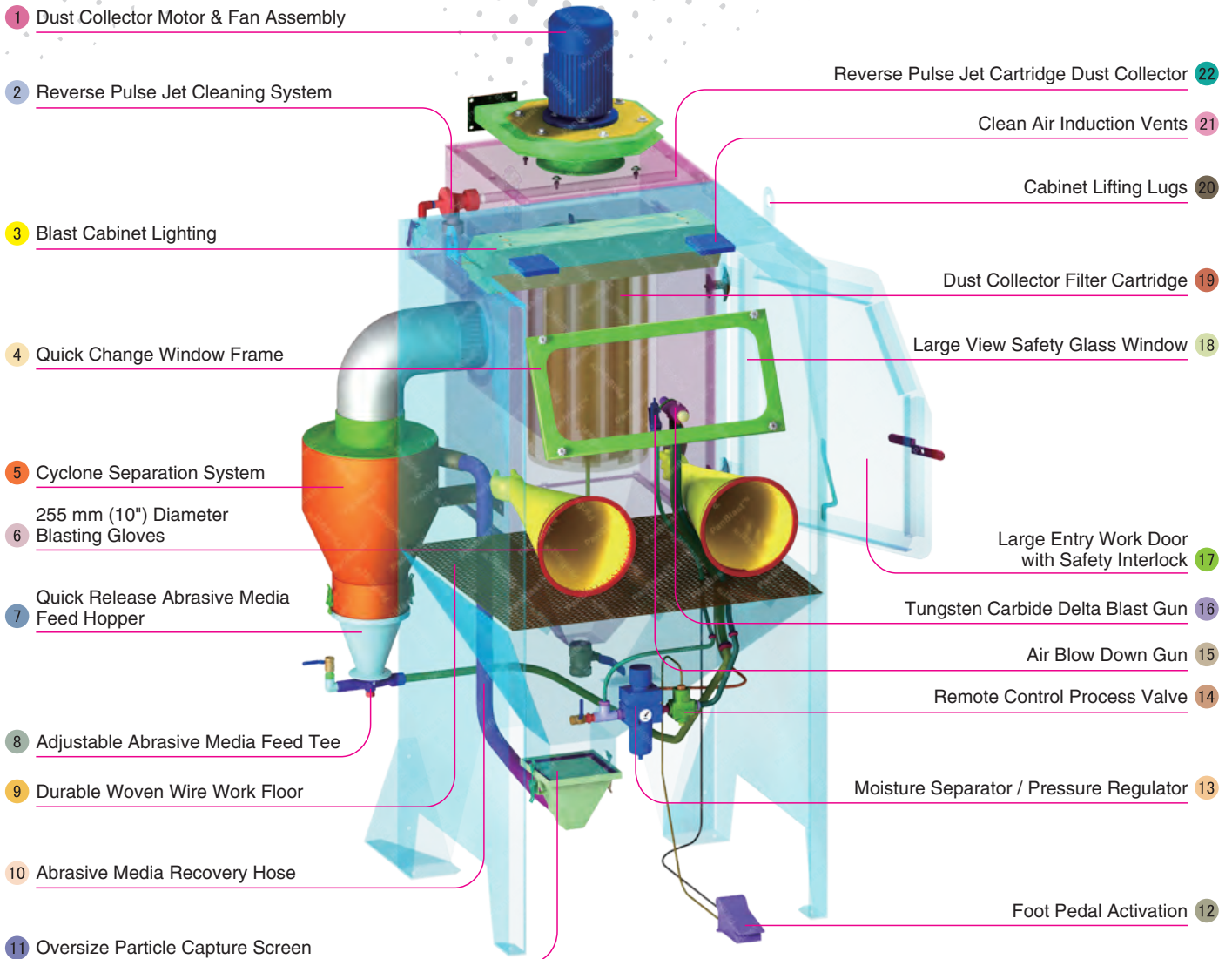
Cabinet Window Cover



Cabinet Gun Stand



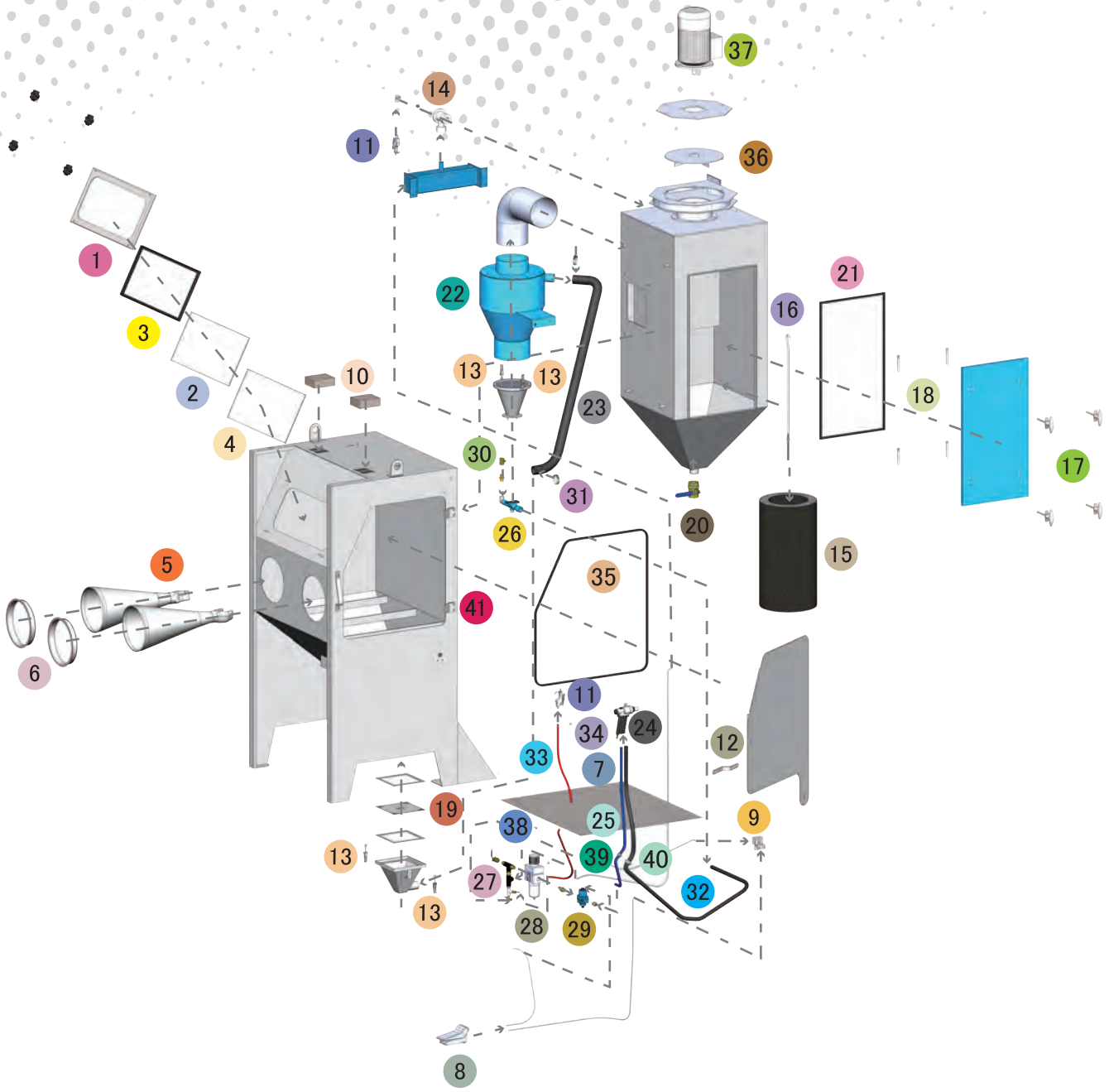
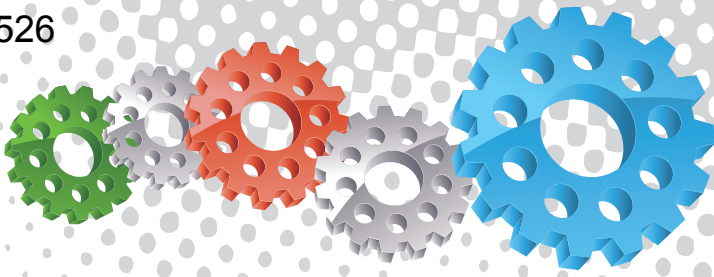
Moisture Separator



Component Highlights



- | | | |
|--|--|--|
| 1 Dust Collector Motor & Fan Assembly | 9 Durable Woven Wire Work Floor | 17 Large Entry Work Door with Safety Interlock |
| 2 Reverse Pulse Jet Cleaning System | 10 Abrasive Media Recovery Hose | 18 Large View Safety Glass Window |
| 3 Blast Cabinet Lighting | 11 Oversize Particle Capture Screen | 19 Dust Collector Filter Cartridge |
| 4 Quick Change Window Frame | 12 Foot Pedal Activation | 20 Cabinet Lifting Lugs |
| 5 Cyclone Separation System | 13 Moisture Separator / Pressure Regulator | 21 Clean Air Induction Vents |
| 6 255 mm (10") Diameter Blasting Gloves | 14 Remote Control Process Valve | 22 Reverse Pulse Jet Cartridge Dust Collector |
| 7 Quick Release Abrasive Media Feed Hopper | 15 Air Blow Down Gun | |
| 8 Adjustable Abrasive Media Feed Tee | 16 Tungsten Carbide Delta Blast Gun | |



Assembly

Stock Code	Description	Weight
BEC-CA-PB-0004	PB500HD Blast Cabinet Assembly	350 kg (772 lbs)

Optional Accessories

Stock Code	Description	Stock Code	Description
BAC-CA-PB-0427	Fixed Turntable	BAC-CA-PB-0428	Rubber Lined Cabinet
BAC-CA-PB-0277	Cabinet Gun Stand	BAC-CA-PB-0455	Foot Valve Guard
BAC-CA-PB-0335	Dust Collector Silence Kit	BAC-DC-0002-01	Single Cartridge Auto-Reverse Pulse Kit

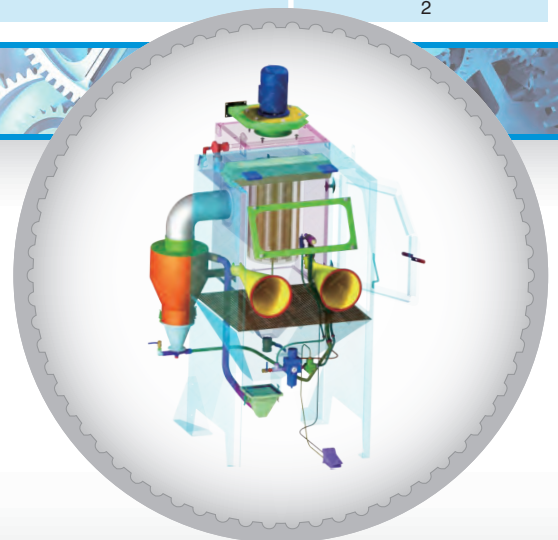
Parts List

Item	Stock Code	Description	Qty
1	YAC-CA-PB-0153	Window Frame	1
2	BAC-CA-PB-0156	Rectangular Window	1
3	BAC-CA-PB-0161	Cabinet Window Seal	2
4	BAC-CA-PB-0390	570 X 220 Window Cover	1
5	BAC-GL-PB-0003	10" Ø Cabinet Rubber Gloves	1 pr
6	BAC-CA-PB-0157	Cabinet Entry Ring	2
7	BAC-CA-PB-0155	Cabinet Floor Mesh	1
8	BAC-CA-PB-0086	Foot Valve Spring Return	1
9	YAC-CA-PB-0219	Door Interlock Valve	1
10	BAC-CA-PB-0158	Air Entry Filter	2
11	YAC-CA-PB-0145	1/4" Blow Off Gun	2
12	YAC-CA-PB-0440	Door Latch	1
13	YAC-FN-PB-0041	Toggle Catch	4
14	BAC-DC-PB-0007	Pulse Valve	1
15	BAC-DF-PB-0002	Filter Cartridge - Size 2	1
16	BAC-DC-PB-0031	Hanger Rod	1
17	YAC-CA-PB-0146	Handle	4
18	YAC-CA-PB-0205	Handle Tongue	4
19	BAC-CA-PB-0117	PB500/PB1000 Hopper-Screen Detail	1
20	BAC-PF-PB-0008	38 mm (1-1/2") Ball Valve	1
21	BAC-CA-0406-00	Dust Collector Door Seal	1
22	BAC-CA-0386-02	Cyclone Assembly	1
23	BAC-CA-0595-00	Recovery Hose	1
24	BAC-BG-PB-0056	Delta-M Gun GDF 1/8 X 1/4 Assembly	1
25	BAC-AF-PB-0164	Air Hose 10 mm 250 PSI Impact Blue	1.5 m
26	BAC-CA-PB-0220	Feed Tee Assembly	1
27	BAC-PF-PB-0021	10 mm (3/8") Ball Valve	1
28	BAC-AF-PB-0048	9.5 mm 3/8" Filter Regulator With Gauge	1
29	BAC-RC-PB-0142	Sola 5 Inlet Valve Sub Assembly	1
30	YAC-PF-PB-0026	PVC Ball Valve	1
31	YAC-FN-PB-0056	Hose Clamp	2
32	BAC-CA-0587-00	Abrasives Hose	1
33	YAC-PF-PB-0125	1/4" NB Air Hose	1.5 m
34	YAC-FN-PB-0263	O-Clip	2
35	BAC-CA-PB-0164	Cabinet Door Seal	1
36	YAC-CA-PB-0184	Fan Impellor - 240cfm Aluminium	1
37	YAC-CA-0472-00	0.55kw 3 Phase AC Motor	1
38	YAC-CA-0477-00	Grommet	1
39	YAC-CA-PB-0423	16 mm Grommet	1
40	BAC-CA-PB-0135	Rubber Sealing Grommet	1
41	YAC-CA-PB-0160	Hinge	2

Technical Data



- Optional Turntable Load:**
 250 kg (551 lbs)
- Internal Size:**
 900 mm (35") Wide 783 mm (31") Deep
 730 mm (29") High
- Door Size:**
 645 mm (25") Wide 730 mm (29") High
- Air Consumption:**
 36 m³/hr (21cfm) @ 550 kPa (80psi)
- Suction Gun / Nozzle Size:**
 BAC-BG-PB-0056 Delta Manual Gun 1/8" x 1/4"
- Cabinet Light:**
 2 x 18Watt 230V 50Hz
- Cabinet Overall Dimension:**
 1200 mm (48") Wide 1360 mm (54") Deep
 2220 mm (88") High
- Recommended Floor Area:**
 2300 mm (91") Wide 2300 mm (91") Deep
- Window Size:**
 600 mm (24") Wide 250 mm (10") High
- Air Supply Line:**
 10 mm (3/8")
- Electrical Power:**
 0.55Kw (0.75hp) 415VAC 50Hz 2 Pole 3 Phase





PB1000HD Blast Cabinet



Product Features

The PanBlast™ PB1000HD Heavy Duty Suction Blast Cabinet is a highly efficient, general purpose, industrial blast cabinet, compatible with a wide range of abrasive media, including:

- * FastBlast™ Chilled Iron Grit
- * PanaGrit™ Cast Steel Grit
- * QuickCut™ Aluminium Oxide
- * BrightBlast™ Glass Beads
- * EnviroGrit™ Garnet

- ▶ Cyclone type abrasive separator cleans the abrasive during use.
- ▶ Safety door interlock.
- ▶ Integral dry cartridge reverse pulse dust collector for clear visibility.
- ▶ Heavy duty, wear resistant rubber gloves.
- ▶ Quick-change laminated glass viewing window - no tools required.
- ▶ Fully adjustable abrasive feed tee.
- ▶ Compressed air regulator and gauge.
- ▶ High performance PanBlast™ Delta Suction Gun.
- ▶ Air blow down gun standard.

Common Applications

- ▶ De-scale and de-rust metal.
- ▶ Remove paint and coatings.
- ▶ Remove burrs, flashings and sand from castings and moldings.
- ▶ Decorative finishing of non-ferrous metals.
- ▶ Stone and glass etching.
- ▶ Mold cleaning.

Complementary Products



Delta GDF Manual Blast Gun



Delta SNH Auto Blast Gun



Cabinet Gun Stand



Moisture Separator



Pow Air Vac



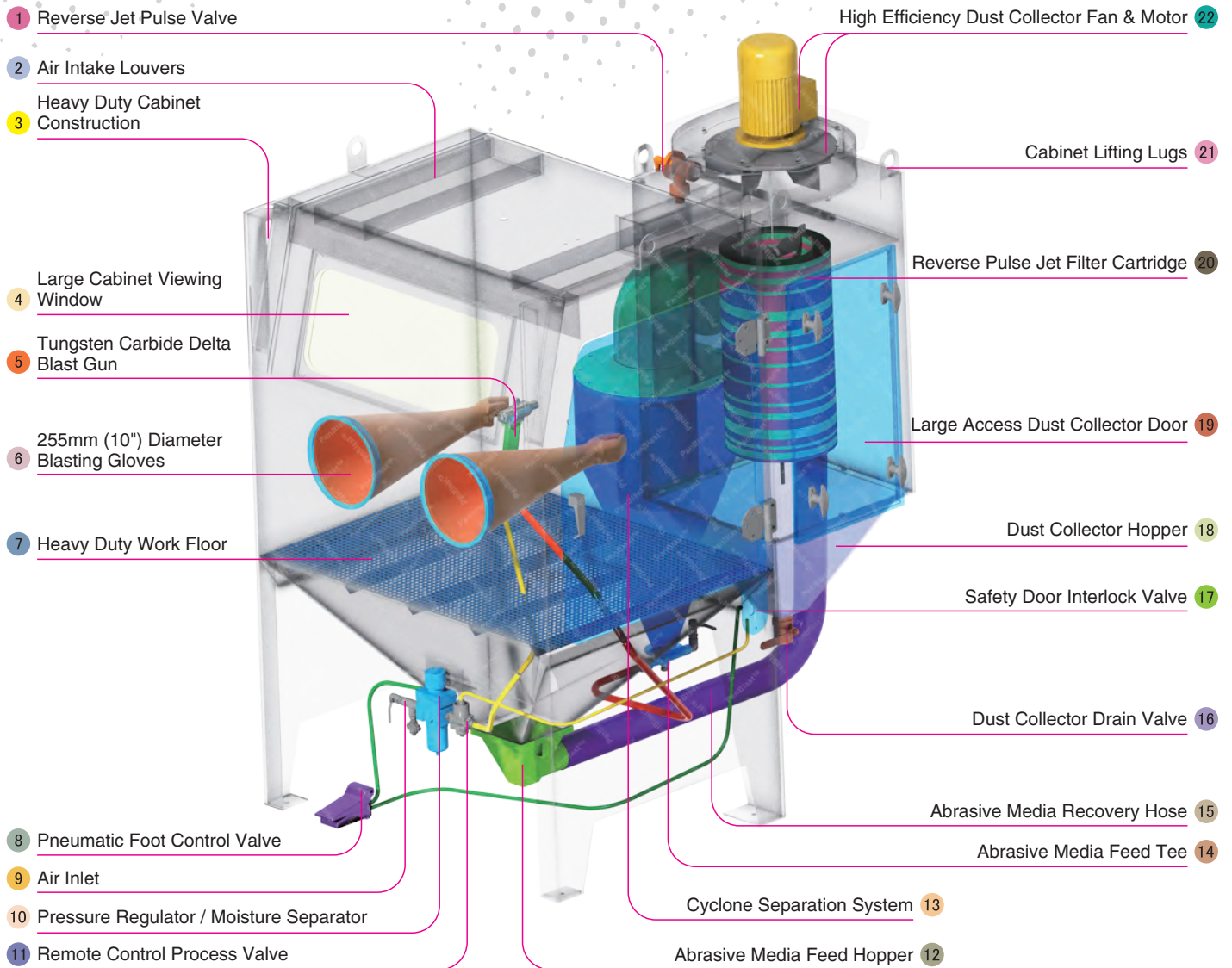
Dust Collector Silencer



Track & Turntable



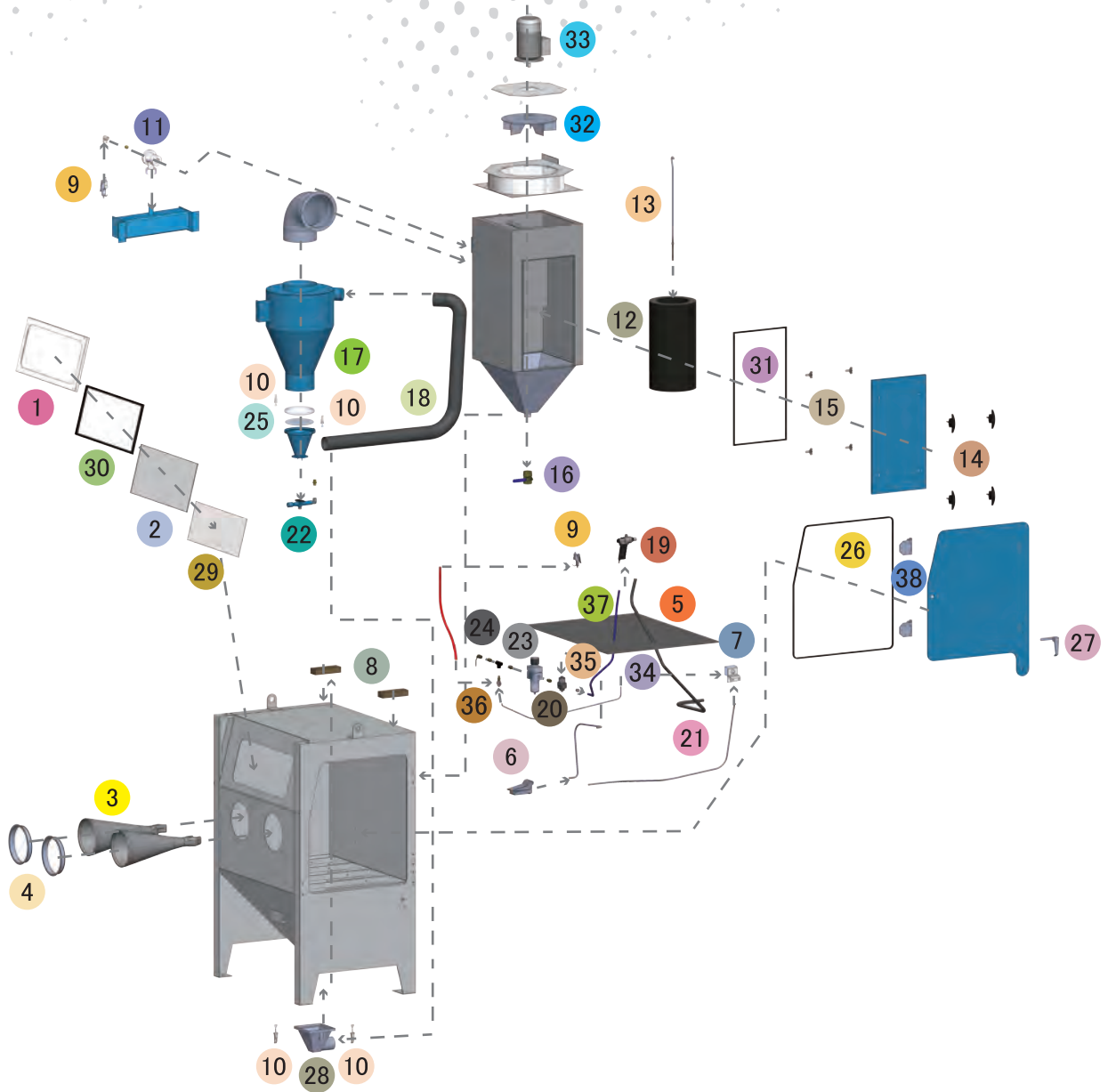
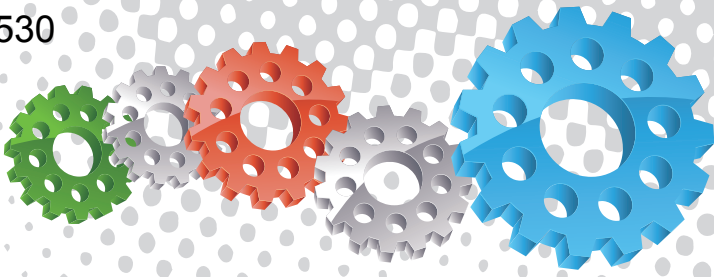
Tumble Basket



Component Highlights



- | | | |
|--|--|---|
| 1 Reverse Jet Pulse Valve | 9 Air Inlet | 17 Safety Door Interlock Valve |
| 2 Air Intake Louvers | 10 Pressure Regulator / Moisture Separator | 18 Dust Collector Hopper |
| 3 Heavy Duty Cabinet Construction | 11 Remote Control Process Valve | 19 Large Access Dust Collector Door |
| 4 Large Cabinet Viewing Window | 12 Abrasive Media Feed Hopper | 20 Reverse Pulse Jet Filter Cartridge |
| 5 Tungsten Carbide Delta Blast Gun | 13 Cyclone Separation System | 21 Cabinet Lifting Lugs |
| 6 255mm (10") Diameter Blasting Gloves | 14 Abrasive Media Feed Tee | 22 High Efficiency Dust Collector Fan & Motor |
| 7 Heavy Duty Work Floor | 15 Abrasive Media Recovery Hose | |
| 8 Pneumatic Foot Control Valve | 16 Dust Collector Drain Valve | |



Assembly

Stock Code	Description	Weight
BEC-CA-0002-02	PB1000HD Blast Cabinet Assembly	520 kg (1146 lbs)

Optional Accessories

Stock Code	Description	Stock Code	Description
BAC-CA-PB-0180	PB1000 Cabinet Track & Turntable	BAC-CA-PB-0040	Tumble Basket Assembly - 300 mm DIA
BAC-CA-PB-0244	PB1000/1500/2000 Turntable Kit	BAC-CA-PB-0455	Foot Valve Guard
BAC-CA-PB-0277	Cabinet Gun Stand	BAC-CA-PB-0292	Operator Sound Kit
BAC-CA-PB-0241	Silencer Kit	BAC-CA-PB-0278	PB1000 Lining Kit
BAC-CA-PB-0243	Tumble Basket Assembly - 350 mm DIA	BAC-DC-0002-01	230V 1- Cartridge Auto - Reverse Pulse Kit

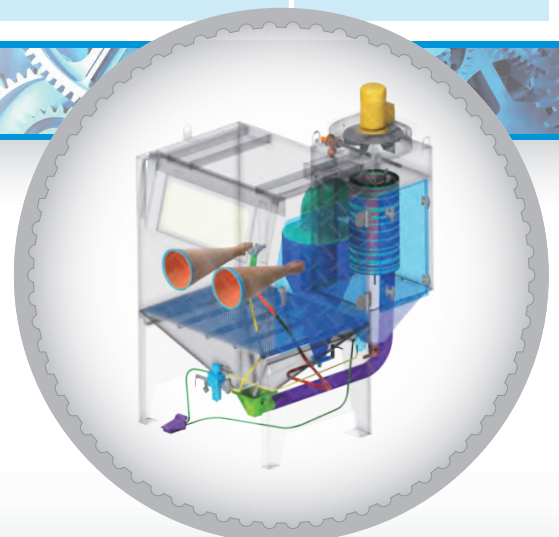
Parts List

Item	Stock Code	Description	Qty
1	YAC-CA-PB-0101	Window Frame	1
2	BAC-CA-PB-0137	Rectangular Window	1
3	BAC-GL-PB-0003	10" Ø Cabinet Rubber Gloves	1 pr
4	BAC-CA-PB-0157	Cabinet Entry Ring	2
5	BAC-CA-PB-0126	Cabinet Floor Mesh	1
6	BAC-CA-PB-0086	Foot Valve Spring Return	1
7	YAC-CA-PB-0219	Door Interlock Valve	1
8	BAC-CA-PB-0140	Air Entry Filter	2
9	YAC-CA-PB-0145	1/4" Blow Off Gun	2
10	YAC-FN-PB-0041	Toggle Catch	4
11	BAC-DC-PB-0007	Pulse Valve	1
12	BAC-DF-PB-0002	Filter Cartridge - Size 2 (Open/Close)	1
13	YAC-DC-PB-0005	700mm Hanger Rod	1
14	YAC-CA-PB-0146	Handle	4
15	YAC-CA-PB-0205	Handle Tongue	4
16	BAC-PF-PB-0008	38 mm (1-1/2") Ball Valve	1
17	BAC-CA-0281-04	Rubber Lined Cyclone	1
18	BAC-CA-PB-0322	Recovery Hose	1
19	BAC-BG-PB-0057	Delta-m Gun GDF 3/16 X 3/8 Assembly	1
20	BAC-RC-PB-0142	Sola5 Inlet Valve Sub Assembly	1
21	BAC-CA-0588-00	Abrasive Hose	1
22	BAC-CA-PB-0220	Feed Tee Assembly	1
23	BAC-AF-PB-0047	13 mm (1/2") Filter Regulator With Gauge	1
24	BAC-PF-PB-0001	13 mm (1/2") Ball Valve	1
25	BAC-CA-0353-00	Standard Cyclone Screen Seal	1
26	BAC-CA-PB-0178	Cabinet Door Seal	1
27	YAC-CA-PB-0138	Latch	1
28	YAC-CA-PB-0226	Spigot	1
29	BAC-CA-PB-0392	720 X 270 Window Cover - 5 pcs	1
30	BAC-CA-PB-0141	Cabinet Window Seal	1
31	BAC-CA-PB-0406	Dust Collector Door Seal	1
32	YAC-CA-PB-0183	Fan Impellor – 360cfm Aluminium	1
33	YAC-CA-PB-0144	1.5 kw 415 v/50 hz Motor	1
34	BAC-CA-PB-0135	Rubber Sealing Grommet	1
35	YAC-CA-PB-0423	16 mm Grommet	1
36	YAC-CA-0477-00	Grommet	1
37	BAC-AF-PB-0164	Air Hose 10 mm 250 psi Impact Blue	2 m
38	BAC-CA-PB-0296	Hinge Assembly	2

Technical Data



- Optional Turntable Load:**
 250 kg (551 lbs)
- Internal Size:**
 1100 mm (43") Wide 920 mm (36") Deep
 890 mm (35") High
- Door Size:**
 755 mm (30") Wide 855 mm (34") High
- Air Consumption:**
 85 m³/hr (50 cfm) @ 550kPa (80 psi)
- Suction Gun / Nozzle Size:**
 BAC-BG-PB-0057 Delta Manual Gun 3/16" x 3/8"
- Cabinet Light:**
 2 x 18Watt 230V 50Hz
- Cabinet Overall Dimension:**
 1300 mm (52") Wide 1625 mm (64") Deep
 2220 mm (88") High
- Recommended Floor Area:**
 2900 mm (114") Wide 2400 mm (95") Deep
- Window Size:**
 750 mm (30") Wide 300 mm (12") High
- Air Supply Line:**
 13 mm (1/2")
- Electrical Power:**
 1.5Kw (2 hp) 415VAC 50Hz 2 Pole 3 Phase





PB1500HD Blast Cabinet



Product Features

The PanBlast™ PB1500HD Heavy Duty Suction Blast Cabinet is a highly efficient, large capacity industrial blast cabinet, compatible with a wide range of abrasive media, including:

- * FastBlast™ Chilled Iron Grit
- * PanaGrit™ Cast Steel Grit
- * QuickCut™ Aluminium Oxide
- * BrightBlast™ Glass Beads
- * EnviroGrit™ Garnet

- ▶ Cyclone type abrasive separator cleans the abrasive during use.
- ▶ Safety door interlock.
- ▶ Integral dry cartridge reverse pulse dust collector for clear visibility.
- ▶ Heavy duty, wear resistant rubber gloves.
- ▶ Quick-change laminated glass viewing window - no tools required.
- ▶ Fully adjustable abrasive feed tee.
- ▶ Compressed air regulator and gauge.
- ▶ High performance PanBlast™ Delta Suction Gun.
- ▶ Standard air blow down gun.

Common Applications

- ▶ De-scale and de-rust metal.
- ▶ Remove paint and coatings.
- ▶ Remove burrs, flashings and sand from castings and moldings.
- ▶ Decorative finishing of non-ferrous metals.
- ▶ Stone and glass etching.
- ▶ Mold cleaning.

Complementary Products



Delta GDF Manual Blast Gun



Delta GDF Auto Blast Gun



Delta SNH Manual Blast Gun



Delta SNH Auto Blast Gun



Pow Air Vac



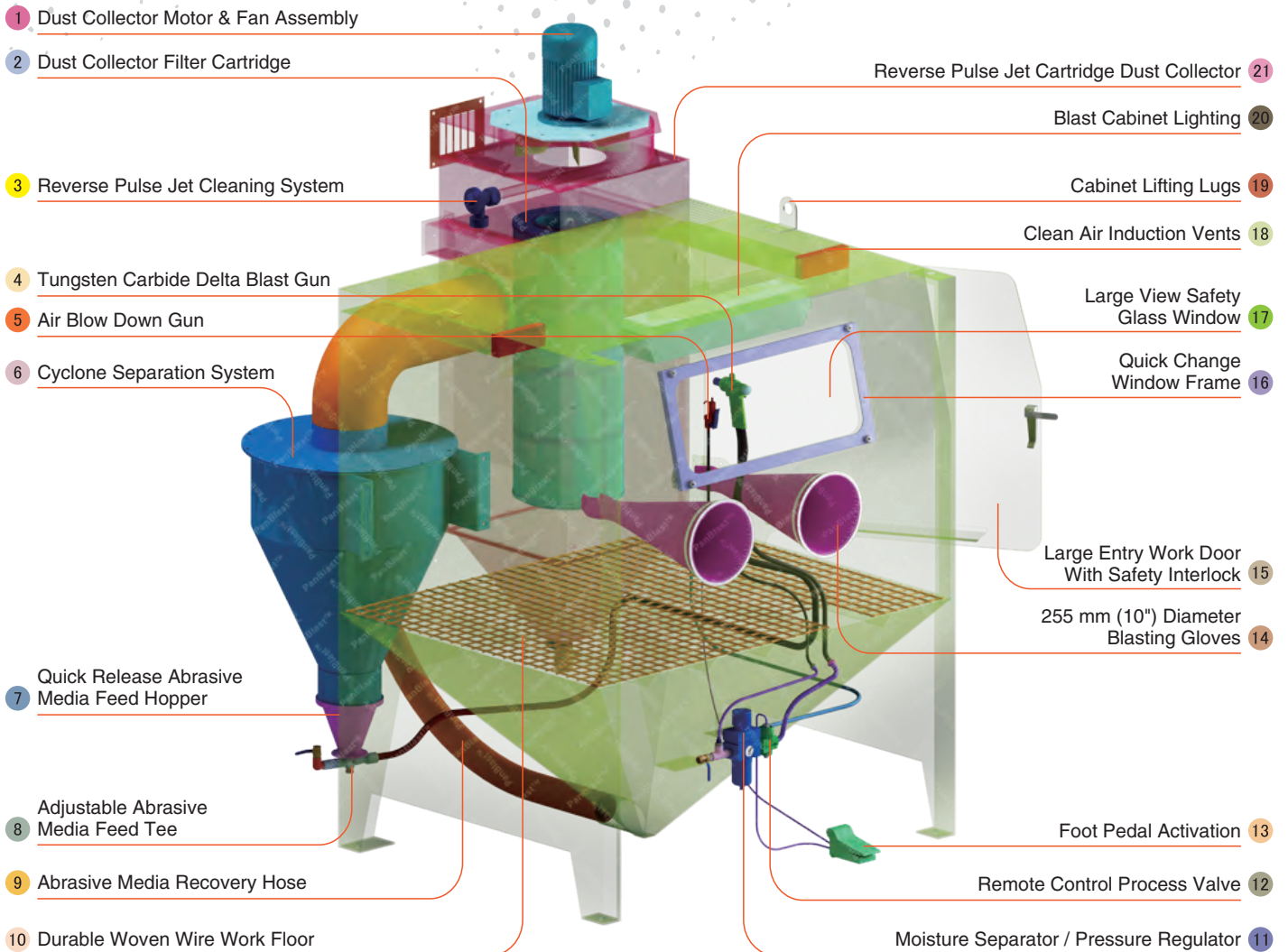
Filter Cartridge



Moisture Separator



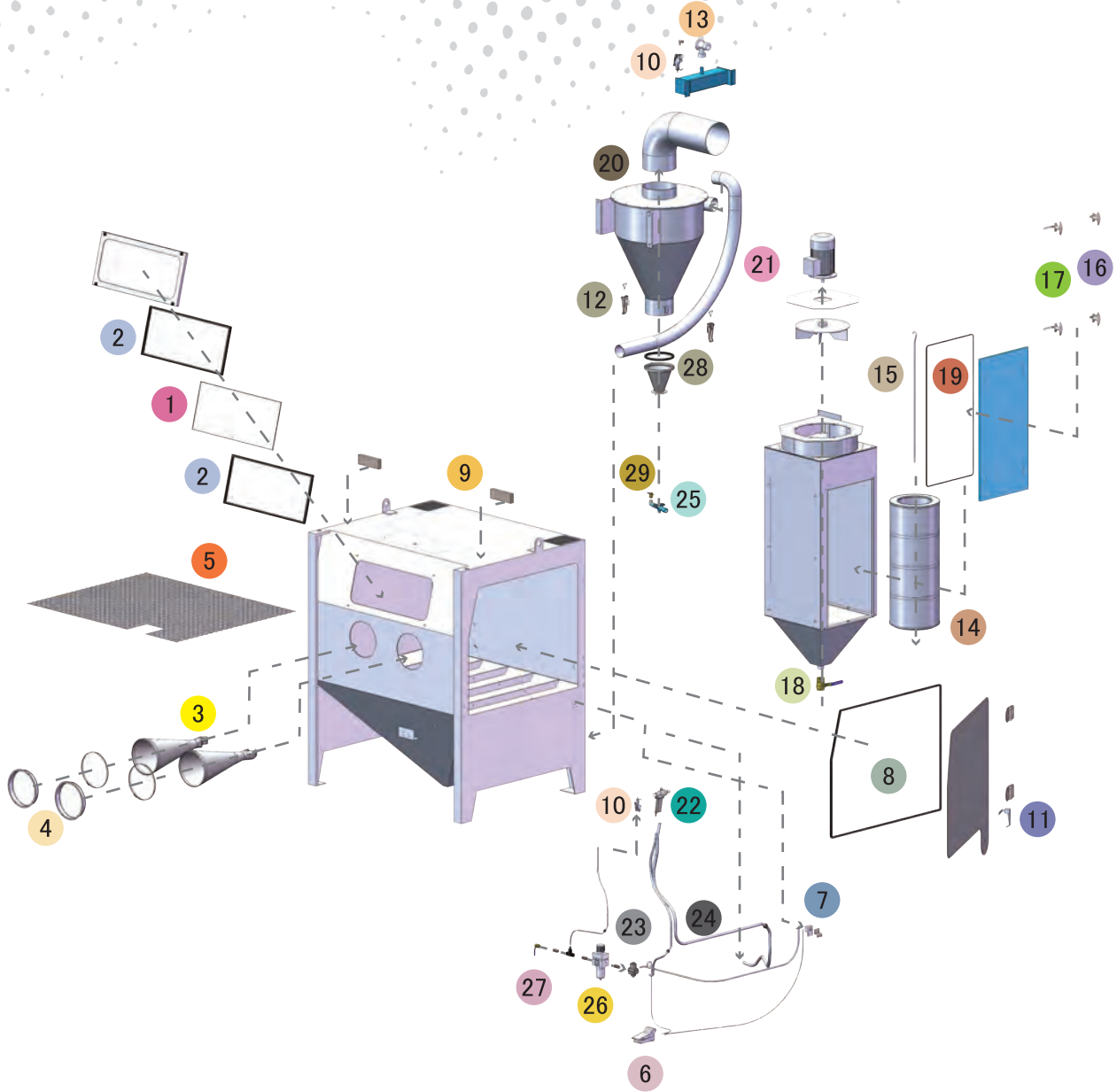
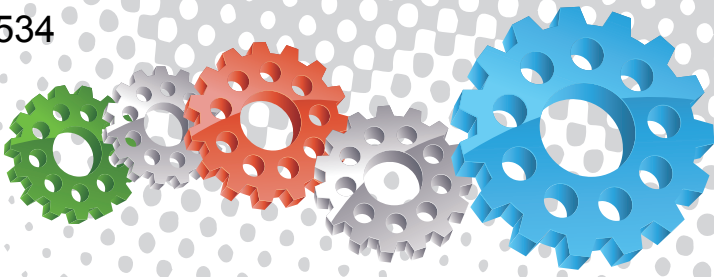
Cabinet Window Cover



Component Highlights



- | | | |
|--|--|--|
| 1 Dust Collector Motor & Fan Assembly | 8 Adjustable Abrasive Media Feed Tee | 15 Large Entry Work Door With Safety Interlock |
| 2 Dust Collector Filter Cartridge | 9 Abrasive Media Recovery Hose | 16 Quick Change Window Frame |
| 3 Reverse Pulse Jet Cleaning System | 10 Durable Woven Wire Work Floor | 17 Large View Safety Glass Window |
| 4 Tungsten Carbide Delta Blast Gun | 11 Moisture Separator / Pressure Regulator | 18 Clean Air Induction Vents |
| 5 Air Blow Down Gun | 12 Remote Control Process Valve | 19 Cabinet Lifting Lugs |
| 6 Cyclone Separation System | 13 Foot Pedal Activation | 20 Blast Cabinet Lighting |
| 7 Quick Release Abrasive Media Feed Hopper | 14 255 mm (10") Diameter Blasting Gloves | 21 Reverse Pulse Jet Cartridge Dust Collector |



Assembly

Stock Code	Description	Weight
BEC-CA-PB-0007	PB1500HD Blast Cabinet Assembly	690 kg (1521 lbs)

Optional Accessories

Stock Code	Description	Stock Code	Description
BAC-CA-PB-0212	Track & Trolley	BAC-CA-PB-0455	Foot Valve Guard
BAC-CA-PB-0243	Tumble Basket Ø350 mm x 375 mm	BAC-CA-PB-0292	Operator Sound Kit
BAC-CA-PB-0040	Tumble Basket Ø300 mm x 325 mm	BAC-CA-PB-0241	Dust Collector Silencer Kit
BAC-CA-PB-0244	Fixed Turntable Kit	BAC-CA-PB-0279	Rubber Lined Cabinet Kit
BAC-CA-PB-0277	Cabinet Gun Stand	BAC-DC-0002-01	Single Cartridge Auto-Reverse Pulse Kit

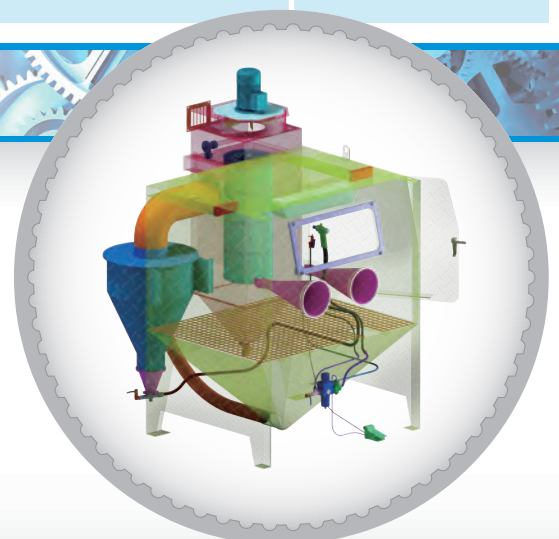
Parts List

Item	Stock Code	Description	Qty
1	BAC-CA-PB-0137	Rectangular Window	1
2	BAC-CA-PB-0141	Cabinet Window Seal	2
3	BAC-GL-PB-0003	10" Ø Cabinet Rubber Gloves	1 pr
4	BAC-CA-PB-0157	Cabinet Entry Ring	2
5	BAC-CA-PB-0318	Cabinet Floor Mesh	1
6	BAC-CA-PB-0086	Foot Valve Spring Return	1
7	YAC-CA-PB-0219	Door Interlock Valve	1
8	BAC-CA-PB-0319	Cabinet Door Seal	1
9	BAC-CA-PB-0324	Air Entry Filter	2
10	YAC-CA-PB-0145	1/4" Blow Off Gun	2
11	YAC-CA-PB-0138	Latch	1
12	YAC-FN-PB-0041	Toggle Catch	2
13	BAC-DC-PB-0007	Pulse Valve	1
14	BAC-DF-PB-0005	Filter Cartridge - Size 3	1
15	BAC-DC-PB-0032	Hanger Rod	1
16	YAC-CA-PB-0146	Handle	4
17	YAC-CA-PB-0205	Handle Tongue	4
18	BAC-PF-PB-0008	38 mm (1-1/2") Ball Valve	1
19	BAC-CA-PB-0436	Dust Collector Jumbo Door Seal	1
20	BAC-CA-PB-0282	PB1500HD Rubber Lined Cyclone	1
21	BAC-CA-0599-00	Recovery Hose	1
22	BAC-BG-PB-0057	Delta-M Gun GDF 3/16 X 3/8 Assembly	1
23	BAC-RC-PB-0142	Sola 5 Inlet Valve Sub Assembly	1
24	BAC-CA-0589-00	Abrasives Hose	1
25	BAC-CA-PB-0220	Feed Tee Assembly	1
26	BAC-AF-PB-0047	13 mm (1/2") Filter Regulator With Gauge	1
27	BAC-PF-PB-0001	13 mm (1/2") Ball Valve	1
28	BAC-CA-0353-00	Standard Cyclone Screen Seal	1
29	YAC-PF-PB-0026	PVC 1/2" Ball Valve	1

Technical Data



- Optional Turntable Load:**
 250 kg (551 lbs)
- Internal Size:**
 1400 mm (55") Wide 1180 mm (47") Deep
 1040 mm (41") High
- Door Size:**
 1055 mm (42") Wide 855 mm (34") High
- Air Consumption:**
 85 m³/hr (50 cfm) @550kPa (80 psi)
- Suction Gun / Nozzle Size:**
 BAC-BG-PB-0057 Delta Manual Gun 3/16" x 3/8"
- Cabinet Light:**
 2 x 36Watt 230V 50Hz
- Cabinet Overall Dimension:**
 1580 mm (63") Wide 1968 mm (78") Deep
 2350 mm (93") High
- Recommended Floor Area:**
 3500 mm (138") Wide 2700 mm (106") Deep
- Window Size:**
 750 mm (30") Wide 300 mm (12") High
- Air Supply Line:**
 13 mm (1/2")
- Electrical Power:**
 1.5Kw (2hp) 415VAC 50 Hz 2 Pole 3 Phase





PB2000HD Blast Cabinet



Product Features

The PanBlast™ PB2000HD Heavy Duty Suction Blast Cabinet is a highly efficient, extra large capacity industrial blast cabinet, compatible with a wide range of abrasive media, including:

- * FastBlast™ Chilled Iron Grit
- * PanaGrit™ Cast Steel Grit
- * QuickCut™ Aluminium Oxide
- * BrightBlast™ Glass Beads
- * EnviroGrit™ Garnet

- ▶ Cyclone type abrasive separator cleans the abrasive during use.
- ▶ Safety door interlock.
- ▶ Integral dry cartridge reverse pulse dust collector for clear visibility.
- ▶ Heavy duty, wear resistant rubber gloves.
- ▶ Quick-change laminated glass viewing window - no tools required.
- ▶ Fully adjustable abrasive feed tee.
- ▶ Compressed air regulator and gauge.
- ▶ High performance PanBlast™ Delta Suction Gun.
- ▶ Standard air blow down gun.

Common Applications

- ▶ De-scale and de-rust metal.
- ▶ Remove paint and coatings.
- ▶ Remove burrs, flashings and sand from castings and moldings.
- ▶ Decorative finishing of non-ferrous metals.
- ▶ Stone and glass etching.
- ▶ Mold cleaning.

Complementary Products



Delta GDF Manual Blast Gun



Delta GDF Auto Blast Gun



Delta SNH Manual Blast Gun



Delta SNH Auto Blast Gun



Pow Air Vac



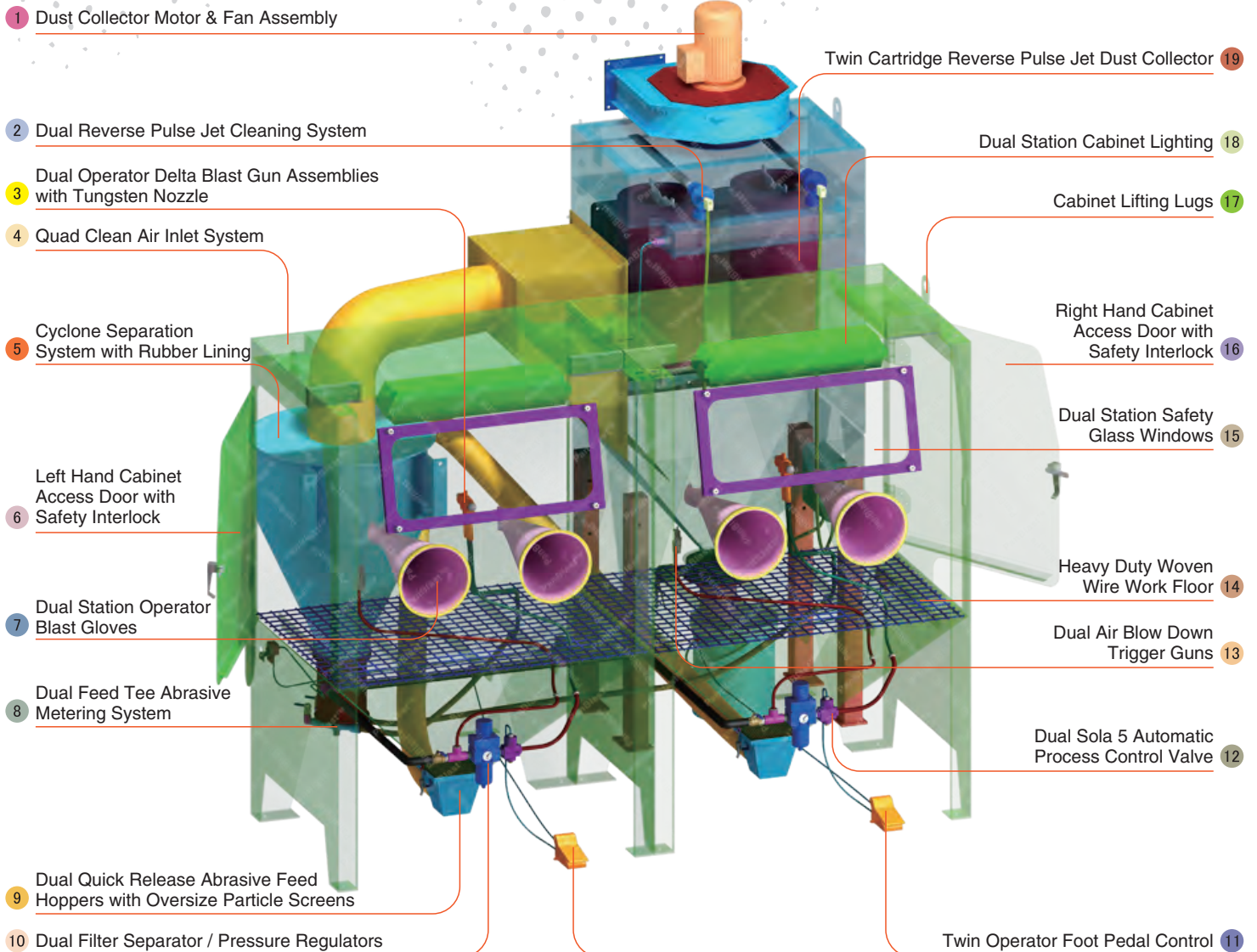
Filter Cartridge



Moisture Separator



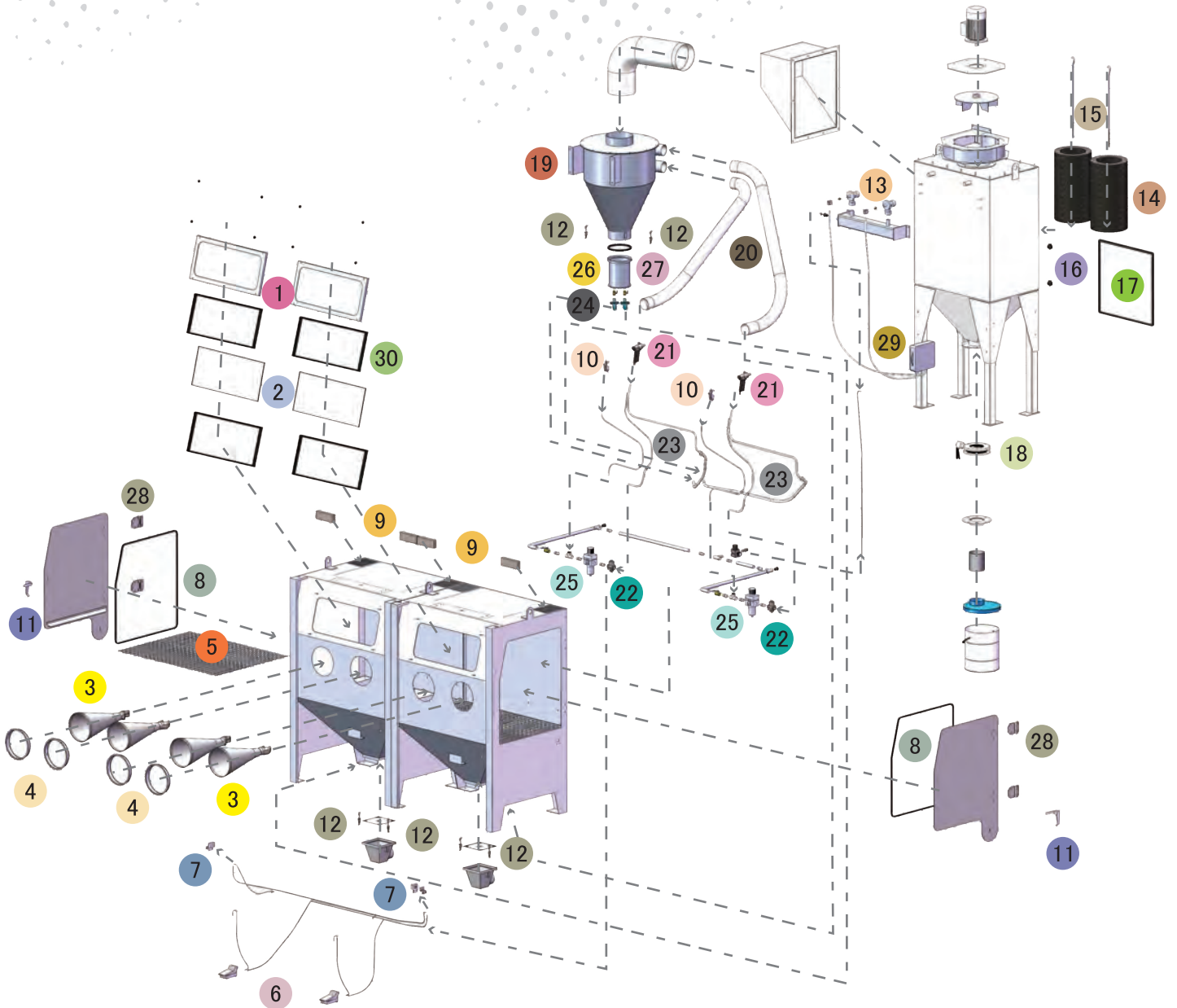
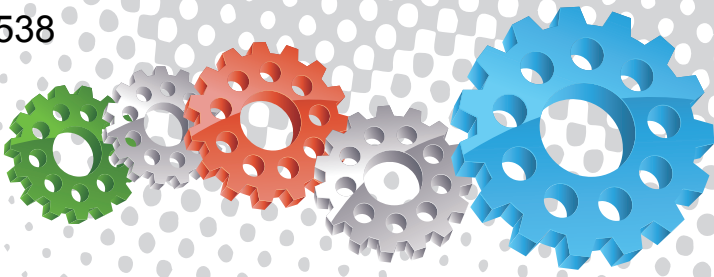
Cabinet Window Cover



Component Highlights



- | | | |
|---|---|---|
| 1 Dust Collector Motor & Fan Assembly | 8 Dual Feed Tee Abrasive Metering System | 15 Dual Station Safety Glass Windows |
| 2 Dual Reverse Pulse Jet Cleaning System | 9 Dual Quick Release Abrasive Feed Hoppers with Oversize Particle Screens | 16 Right Hand Cabinet Access Door with Safety Interlock |
| 3 Dual Operator Delta Blast Gun Assemblies with Tungsten Nozzle | 10 Dual Filter Separator / Pressure Regulators | 17 Cabinet Lifting Lugs |
| 4 Quad Clean Air Inlet System | 11 Twin Operator Foot Pedal Control | 18 Dual Station Cabinet Lighting |
| 5 Cyclone Separation System with Rubber Lining | 12 Dual Sola 5 Automatic Process Control Valve | 19 Twin Cartridge Reverse Pulse Jet Dust Collector |
| 6 Left Hand Cabinet Access Door with Safety Interlock | 13 Dual Air Blow Down Trigger Guns | |
| 7 Dual Station Operator Blast Gloves | 14 Heavy Duty Woven Wire Work Floor | |



Assembly

Stock Code	Description	Weight
BEC-CA-PB-0012	PB2000HD Blast Cabinet Assembly	800 kg (1764 lbs)

Optional Accessories

Stock Code	Description	Stock Code	Description
BAC-CA-PB-0244	Fixed Turntable Kit	BAC-CA-PB-0280	Rubber Lined Cabinet Kit
BAC-CA-PB-0277	Cabinet Gun Stand	BAC-CA-PB-0292	Operator Sound Kit
BAC-CA-PB-0241	Dust Collector Silencer Kit	BAC-CA-PB-0247	Track & Trolley - LH
BAC-CA-PB-0455	Foot Valve Guard	BAC-CA-PB-0180	Track & Trolley - RH
BAC-CA-PB-0040	Tumble Basket Ø300 mm x 325 mm	BAC-CA-PB-0243	Tumble Basket Ø350 mm x 375 mm

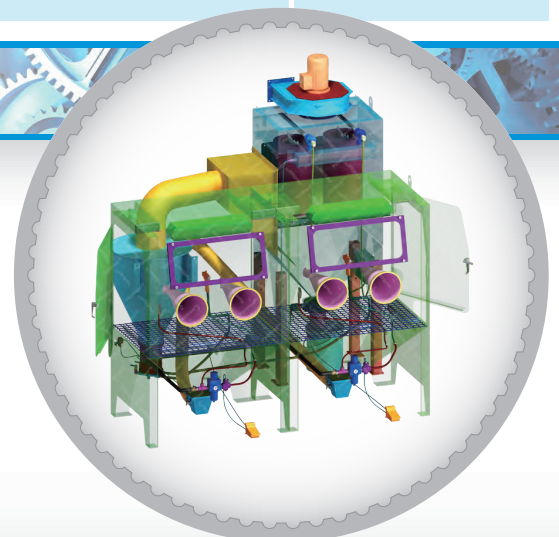
Parts List

Item	Stock Code	Description	Qty
1	YAC-CA-PB-0101	Window Frame	2
2	BAC-CA-PB-0137	Rectangular Window	2
3	BAC-GL-PB-0003	10" Ø Cabinet Rubber Gloves	2 pr
4	BAC-CA-PB-0157	Cabinet Entry Ring	4
5	BAC-CA-PB-0126	Cabinet Floor Mesh	2
6	BAC-CA-PB-0086	Foot Valve Spring Return	2
7	YAC-CA-PB-0219	Door Interlock Valve	2
8	BAC-CA-PB-0178	Cabinet Door Seal	2
9	BAC-CA-PB-0140	Air Entry Filter	4
10	YAC-CA-PB-0145	1/4" Blow Off Gun	2
11	YAC-CA-PB-0138	Latch	2
12	YAC-FN-PB-0041	Toggle Catch	6
13	YAC-DC-0053-00	Pulse Valve	2
14	BAC-DF-PB-0002	Filter Cartridge - Size 2	2
15	YAC-DC-PB-0005	700 mm Hanger Rod	2
16	YAC-FN-0383-00	Female Star Knob	2
17	BAC-DC-0038-00	Dust Collector Access Door Seal	1
18	BAC-PF-0407-00	Butterfly Valve - 5"	1
19	BAC-CA-PB-0283	PB2000HD Rubber Lined Cyclone	1
20	BAC-CA-0598-00	Recovery Hose	1
21	BAC-BG-PB-0057	Delta-m Gun GDF 3/16 X 3/8 Assembly	2
22	BAC-RC-PB-0142	Sola5 Inlet Valve Sub Assembly	2
23	BAC-CA-0590-00	Abrasives Hose	1
24	BAC-CA-PB-0220	Feed Tee Assembly	2
25	BAC-AF-PB-0047	13 mm (1/2") Filter Regulator With Gauge	2
26	BAC-PF-PB-0001	13 mm (1/2") Ball Valve	2
27	BAC-CA-0353-00	Standard Cyclone Screen Seal	1
28	BAC-CA-PB-0296	Hinge Assembly	4
29	BAC-DC-0061-00	Pulse Timer 2-10 Stations	1
30	BAC-CA-PB-0141	Cabinet Window Seals	4

Technical Data



- Optional Turntable Load:**
 250 kg (551 lbs)
- Internal Size:**
 2000 mm (79") Wide 920 mm (36") Deep
 890 mm (35") High
- Door Size:**
 755 mm (30") Wide 855 mm (34") High
- Air Consumption:**
 170 m³/hr (100 cfm) @550 kPa (80 psi)
- Suction Gun / Nozzle Size:**
 BAC-BG-PB-0057 x 2 pcs
 Delta Manual Gun 3/16" x 3/8"
- Cabinet Light:**
 4 x 18Watt 230V 50Hz
- Cabinet Overall Dimension:**
 2496 mm (99") Wide 1809 mm (72") Deep
 2681 mm (106") High
- Recommended Floor Area:**
 5600 mm (221") Wide 3000 mm (118") Deep
- Window Size:**
 2 x 750 mm (30") Wide 300 mm (12") High
- Air Supply Line:**
 19 mm (3/4")
- Electrical Power:**
 4Kw (5 hp) 415VAC 50Hz 2 Pole 3 Phase



Архангельск (8182)63-90-72
Астана (7172)727-132
Астрахань (8512)99-46-04
Барнаул (3852)73-04-60
Белгород (4722)40-23-64
Брянск (4832)59-03-52
Владивосток (423)249-28-31
Волгоград (844)278-03-48
Вологда (8172)26-41-59
Воронеж (473)204-51-73
Екатеринбург (343)384-55-89
Иваново (4932)77-34-06

Ижевск (3412)26-03-58
Иркутск (395)279-98-46
Казань (843)206-01-48
Калининград (4012)72-03-81
Калуга (4842)92-23-67
Кемерово (3842)65-04-62
Киров (8332)68-02-04
Краснодар (861)203-40-90
Красноярск (391)204-63-61
Курск (4712)77-13-04
Липецк (4742)52-20-81

Киргизия (996)312-96-26-47

Магнитогорск (3519)55-03-13
Москва (495)268-04-70
Мурманск (8152)59-64-93
Набережные Челны (8552)20-53-41
Нижний Новгород (831)429-08-12
Новокузнецк (3843)20-46-81
Новосибирск (383)227-86-73
Омск (3812)21-46-40
Орел (4862)44-53-42
Оренбург (3532)37-68-04
Пенза (8412)22-31-16

Россия (495)268-04-70

Пермь (342)205-81-47
Ростов-на-Дону (863)308-18-15
Рязань (4912)46-61-64
Самара (846)206-03-16
Санкт-Петербург (812)309-46-40
Саратов (845)249-38-78
Севастополь (8692)22-31-93
Симферополь (3652)67-13-56
Смоленск (4812)29-41-54
Сочи (862)225-72-31
Ставрополь (8652)20-65-13

Казахстан (772)734-952-31

Сургут (3462)77-98-35
Тверь (4822)63-31-35
Томск (3822)98-41-53
Тула (4872)74-02-29
Тюмень (3452)66-21-18
Ульяновск (8422)24-23-59
Уфа (347)229-48-12
Хабаровск (4212)92-98-04
Челябинск (351)202-03-61
Череповец (8202)49-02-64
Ярославль (4852)69-52-93

www.panblast.nt-rt.ru | | pav@nt-rt.ru