

Архангельск (8182)63-90-72  
Астана (7172)727-132  
Астрахань (8512)99-46-04  
Барнаул (3852)73-04-60  
Белгород (4722)40-23-64  
Брянск (4832)59-03-52  
Владивосток (423)249-28-31  
Волгоград (844)278-03-48  
Вологда (8172)26-41-59  
Воронеж (473)204-51-73  
Екатеринбург (343)384-55-89  
Иваново (4932)77-34-06

Ижевск (3412)26-03-58  
Иркутск (395)279-98-46  
Казань (843)206-01-48  
Калининград (4012)72-03-81  
Калуга (4842)92-23-67  
Кемерово (3842)65-04-62  
Киров (8332)68-02-04  
Краснодар (861)203-40-90  
Красноярск (391)204-63-61  
Курск (4712)77-13-04  
Липецк (4742)52-20-81

Киргизия (996)312-96-26-47

Магнитогорск (3519)55-03-13  
Москва (495)268-04-70  
Мурманск (8152)59-64-93  
Набережные Челны (8552)20-53-41  
Нижний Новгород (831)429-08-12  
Новокузнецк (3843)20-46-81  
Новосибирск (383)227-86-73  
Омск (3812)21-46-40  
Орел (4862)44-53-42  
Оренбург (3532)37-68-04  
Пенза (8412)22-31-16

Россия (495)268-04-70

Пермь (342)205-81-47  
Ростов-на-Дону (863)308-18-15  
Рязань (4912)46-61-64  
Самара (846)206-03-16  
Санкт-Петербург (812)309-46-40  
Саратов (845)249-38-78  
Севастополь (8692)22-31-93  
Симферополь (3652)67-13-56  
Смоленск (4812)29-41-54  
Сочи (862)225-72-31  
Ставрополь (8652)20-65-13

Казахстан (772)734-952-31

Сургут (3462)77-98-35  
Тверь (4822)63-31-35  
Томск (3822)98-41-53  
Тула (4872)74-02-29  
Тюмень (3452)66-21-18  
Ульяновск (8422)24-23-59  
Уфа (347)229-48-12  
Хабаровск (4212)92-98-04  
Челябинск (351)202-03-61  
Череповец (8202)49-02-64  
Ярославль (4852)69-52-93

[www.panblast.nt-rt.ru](http://www.panblast.nt-rt.ru) | | [pav@nt-rt.ru](mailto:pav@nt-rt.ru)

# Технические характеристики на ручки сброса воздуха (рукоятки дистанционного управления) КОМПАНИИ **PanBlast**



## QuikStop IIS Pneumatic Control Handle



### Product Features

The PanBlast™ QuikStop IIS Pneumatic Control Handle is an ergonomic deadman device, allowing an operator to safely operate the blast nozzle without a conventional hold down handle, thus reducing operator fatigue.

- ▶ Simple ball and wrist strap device.
- ▶ Works with standard twinline hose.
- ▶ Immediate pilot air shutoff if blast hose is dropped.
- ▶ Reduces operator fatigue.

### Common Applications

- ▶ General abrasive blasting operations.
- ▶ Operations requiring extended blasting uptime.

### Complementary Products



Sola 5 Inlet Valve



Sola 10 Inlet Valve



Sola 30 Inlet Valve



UniFlo Remote Valve



AirFlo Pneumatic Handle



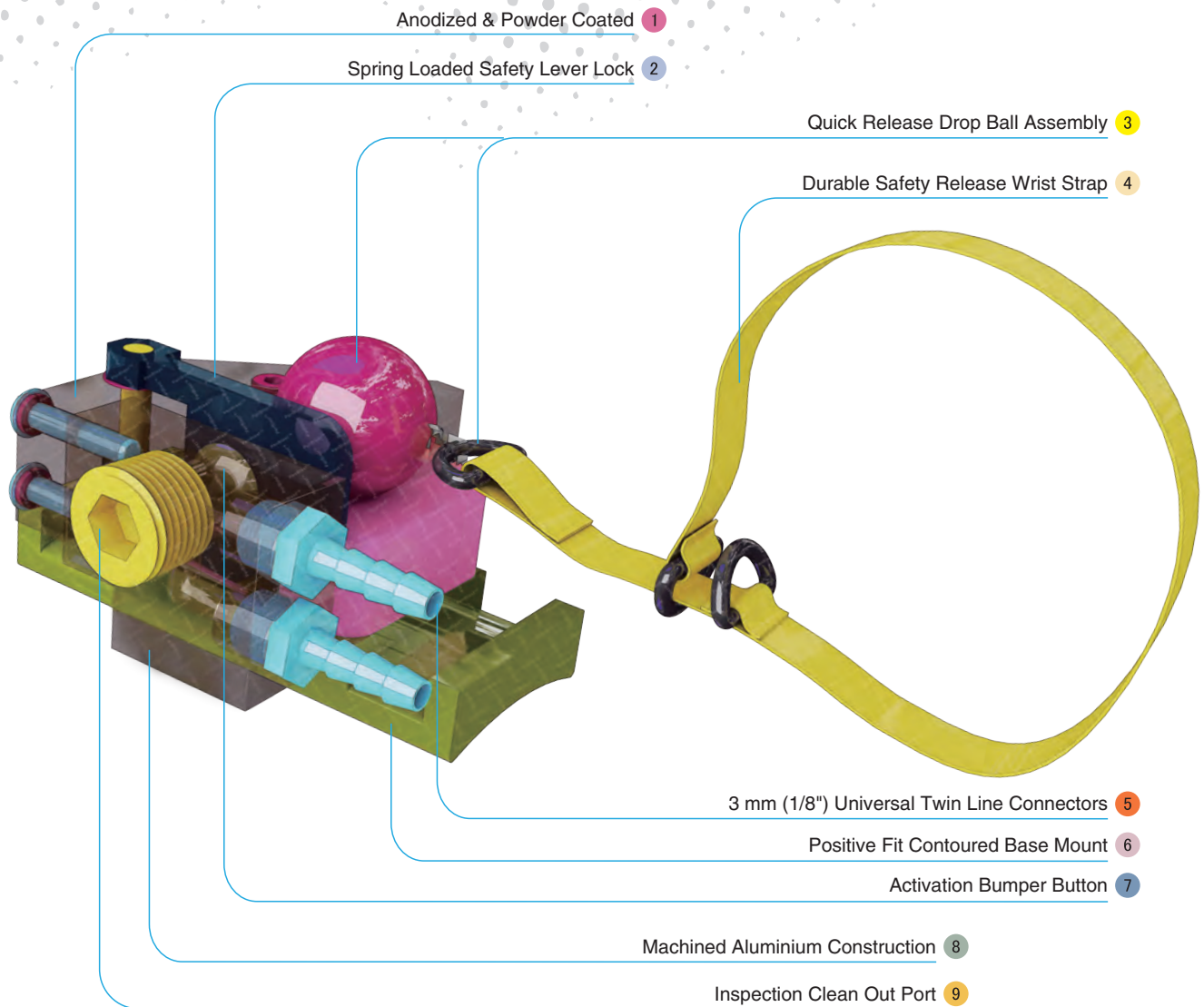
Helix 150 Remote Valve



Blast Hoses



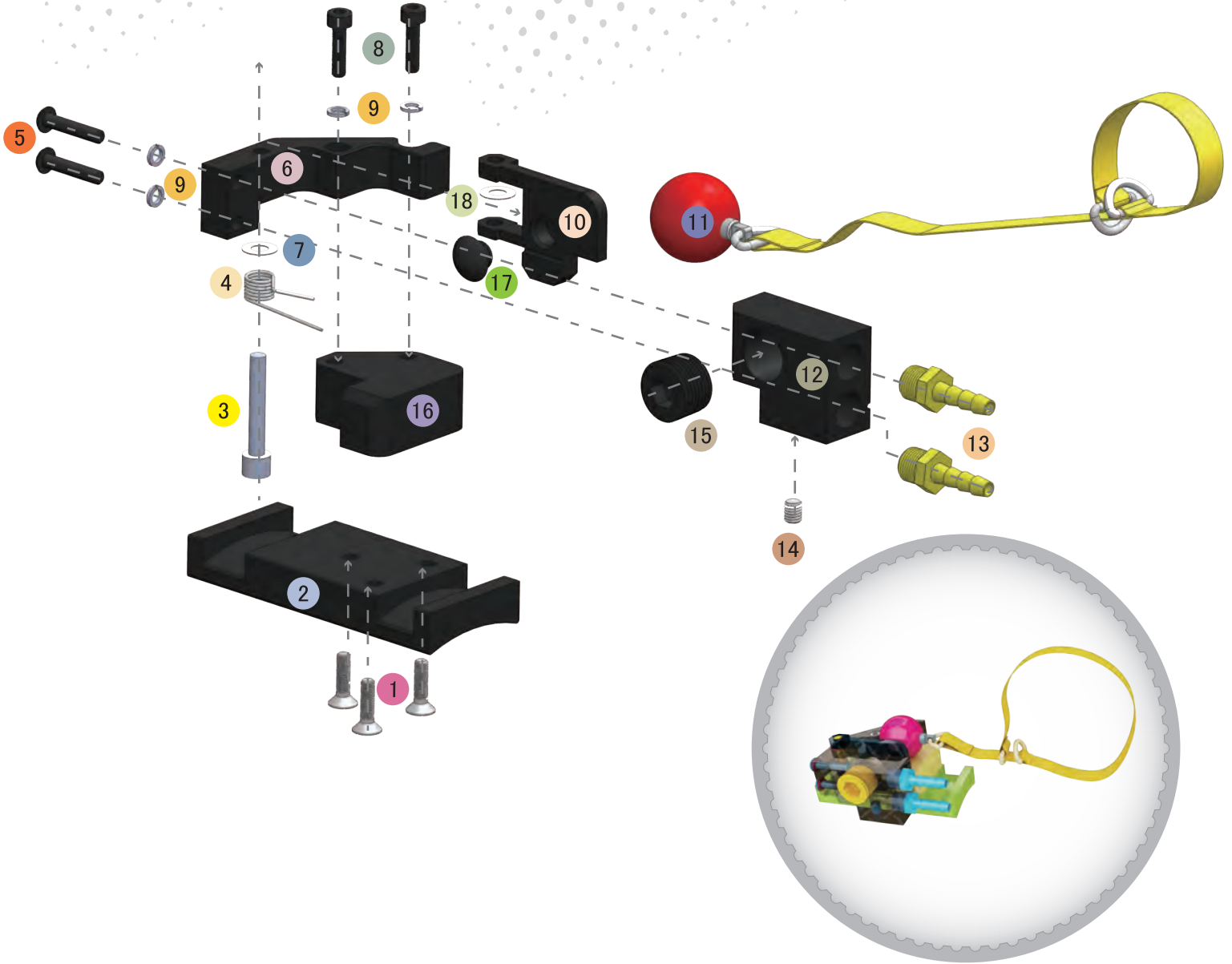
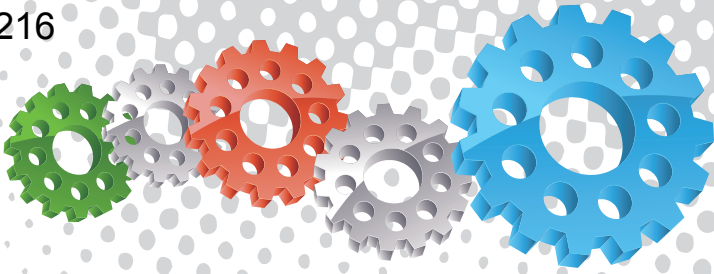
Twinline Hose



## Component Highlights



- |                                    |  |                                   |
|------------------------------------|--|-----------------------------------|
| 1 Anodized & Powder Coated         | 4 Durable Safety Release Wrist Strap         | 7 Activation Bumper Button        |
| 2 Spring Loaded Safety Lever Lock  | 5 3 mm (1/8") Universal Twin Line Connectors | 8 Machined Aluminium Construction |
| 3 Quick Release Drop Ball Assembly | 6 Positive Fit Contoured Base Mount          | 9 Inspection Clean Out Port       |



## Assembly

Stock Code  
BAC-RC-0236-04

Description  
QuikStop IIS Pneumatic Control Handle

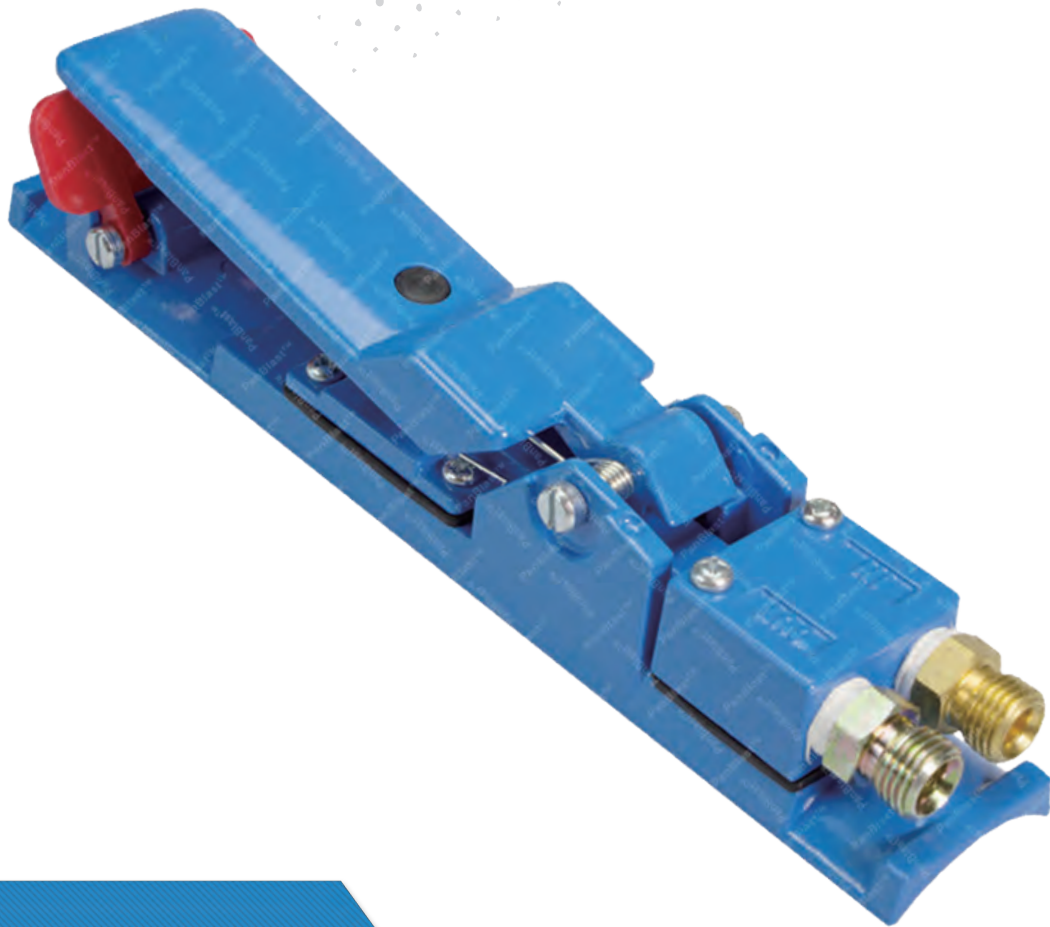
Weight  
0.3 kg (10.6 lbs)







# AirFlo Pneumatic Control Handle



## Product Features

The PanBlast™ AirFlo Pneumatic Control Handle is a bleed-type handle, designed to operate with a twinline system to remotely supply and activate air to the blast pot remote control valves. The BSP configuration is compatible with most non-U.S. blasting equipment.

- ▶ Safe, 2-stage failsafe lock.
- ▶ Air-bleed at the handle on deactivation.
- ▶ BSP threaded connection.
- ▶ Service kits available.

## Common Applications

- ▶ Standard fitment on PanBlast™ BP automatic Series pots.
- ▶ Recommended for use with PanBlast™ UniFlo Remote Control Valve.
- ▶ Upgrade/retrofitting of OEM remote control systems.

## Complementary Products



Sola 5 Inlet Valve



Sola 10 Inlet Valve



Sola 30 Inlet Valve



UniFlo Remote Valve



QuikStop IIS Pneumatic Handle



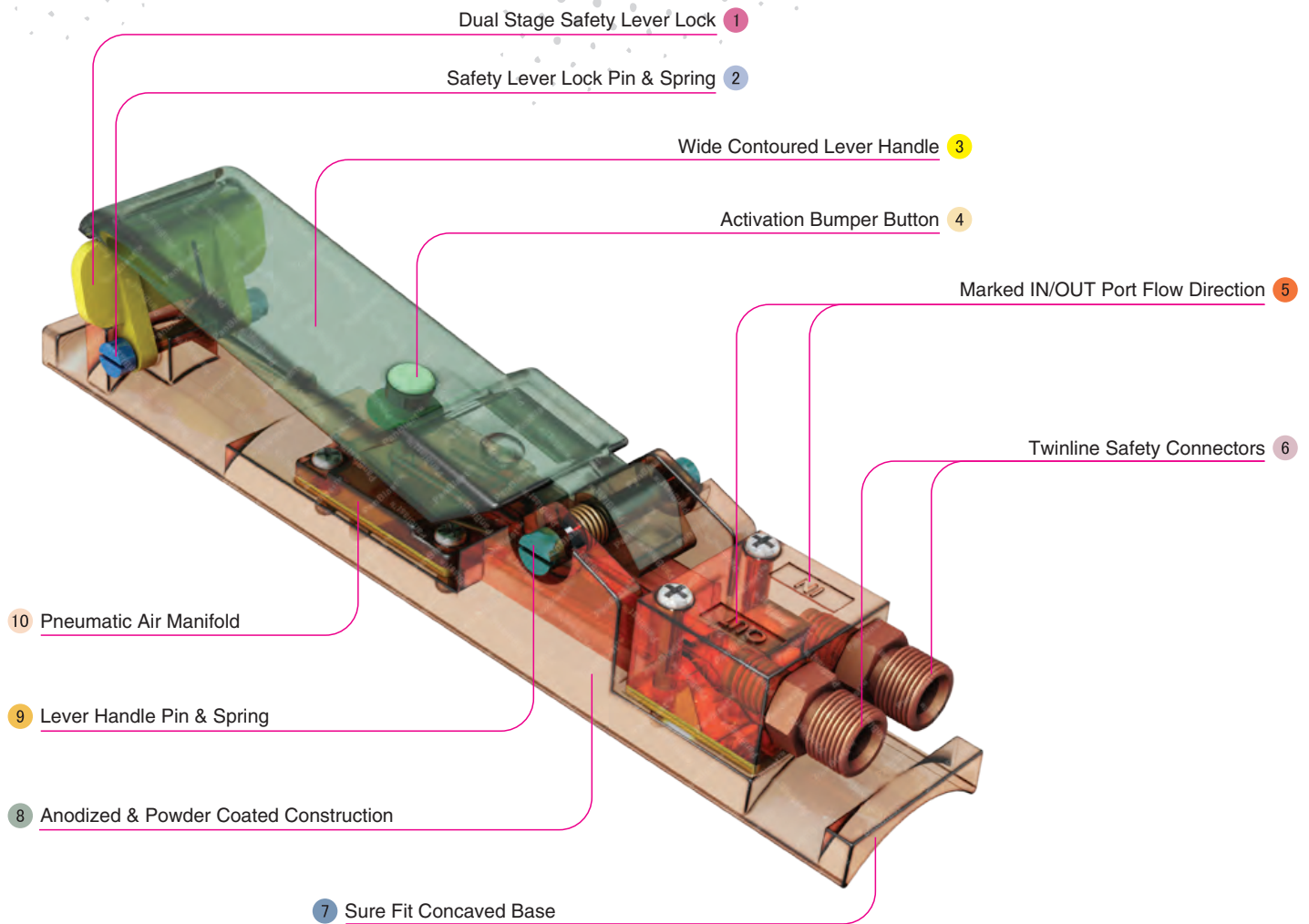
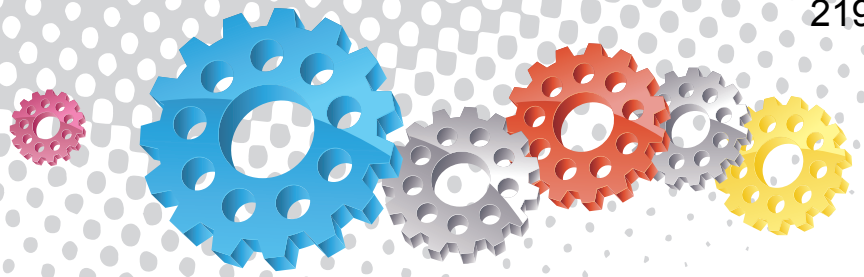
Helix 150 Remote Valve



Blast Hoses



Twinline Hose

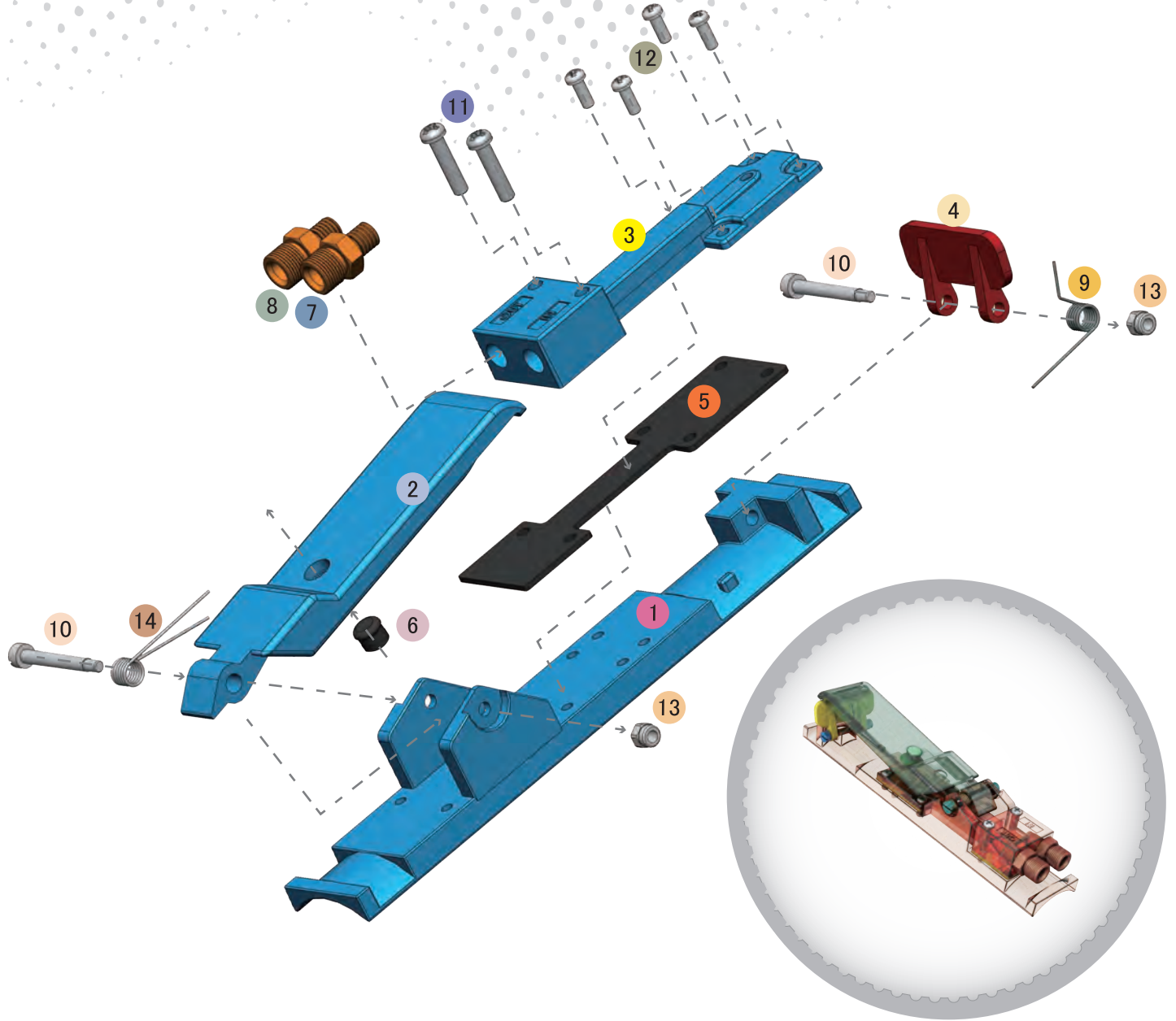
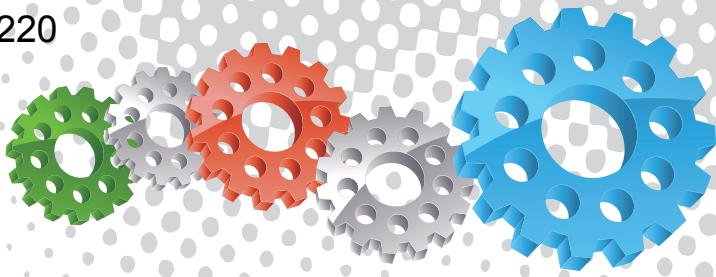


## Component Highlights



- |                                  |   |                             |
|----------------------------------|---|-----------------------------|
| 1 Dual Stage Safety Lever Lock   | 5 Marked IN/OUT Port Flow Direction     | 9 Lever Handle Pin & Spring |
| 2 Safety Lever Lock Pin & Spring | 6 Twinline Safety Connectors            | 10 Pneumatic Air Manifold   |
| 3 Wide Contoured Lever Handle    | 7 Sure Fit Concaved Base                |                             |
| 4 Activation Bumper Button       | 8 Anodized & Powder Coated Construction |                             |





## Assembly

Stock Code	Description	Weight
BAC-RC-PB-0085	AirFlo Pneumatic Control Handle	0.43 kg (0.95 lbs)

## Service Kits

Stock Code	Description	Include Items
BAC-RC-PB-0011	AirFlo Handle Service Kit	2 4 5 6 x6 9 14
BAC-RC-PB-0116	AirFlo Bumper Kit	6 x6
BAC-RC-PB-0117	AirFlo Lever Spring Kit	14 x6





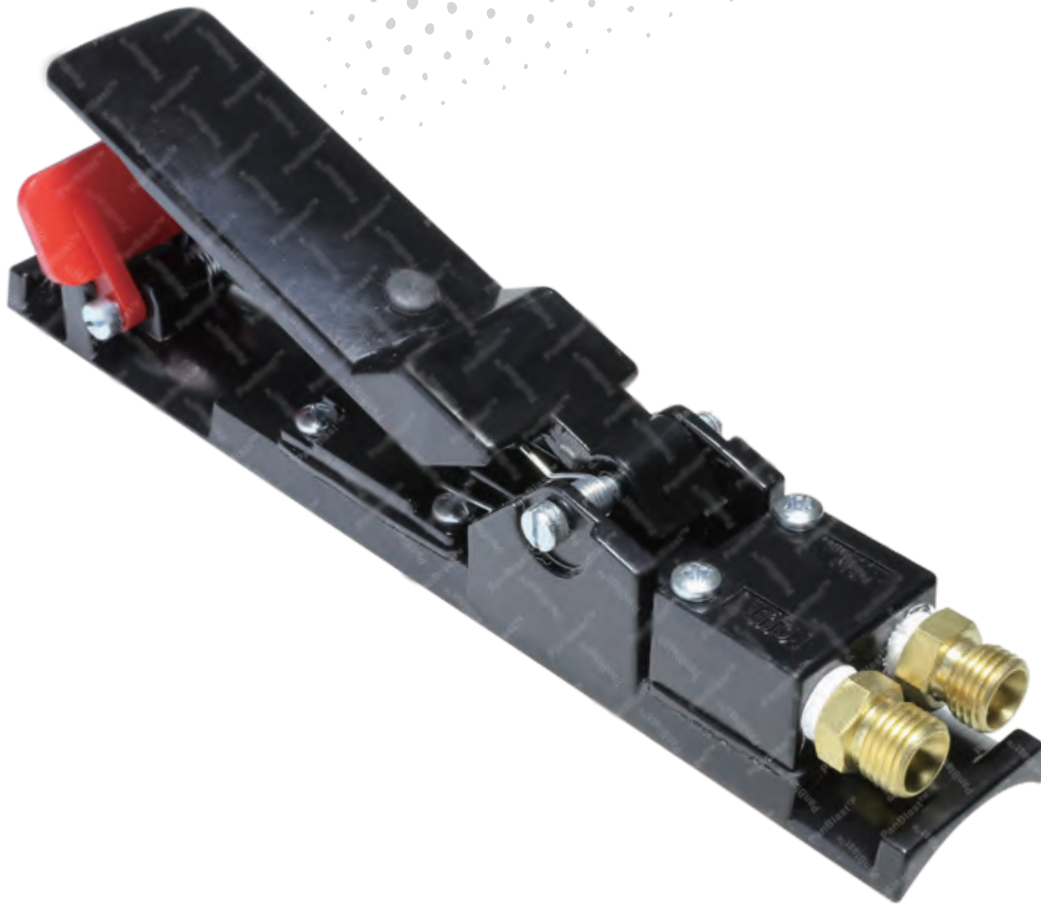
## Parts List



Description	Qty	Description	Qty	Description	Qty
1 Body	1	6 Bumper Button	1	11 Screw	2
2 Lever	1	7 Nipple-Restricted	1	12 Screw	4
3 Pneumatic Manifold	1	8 Nipple-Un-Restricted	1	13 Lock Nut	2
4 Lever Safety Lock	1	9 Safety Lock Spring	1	14 Lever Spring	1
5 Gasket	1	10 Screw	2		



# AirFlo NPT Pneumatic Control Handle



## Product Features

The PanBlast™ AirFlo NPT Pneumatic Control Handle is a bleed-type handle, designed to operate with a twinline system to remotely supply and activate air to blast pot remote control valves. The NPT configuration is compatible with most U.S. blasting equipment.

- ▶ Safe, 2-stage failsafe lock.
- ▶ Air-bleed at the handle on deactivation.
- ▶ NPT threaded connection.
- ▶ Service kits available.

## Common Applications

- ▶ Compatible with U.S. type Automatic Blast Pots.
- ▶ Recommended for use with PanBlast™ UniFlo Remote Control Valve.
- ▶ Upgrade/retrofitting of OEM remote control systems.

## Complementary Products



Sola 5 Inlet Valve



Sola 10 Inlet Valve



Sola 30 Inlet Valve



UniFlo Remote Valve



QuikStop IIS Pneumatic Handle



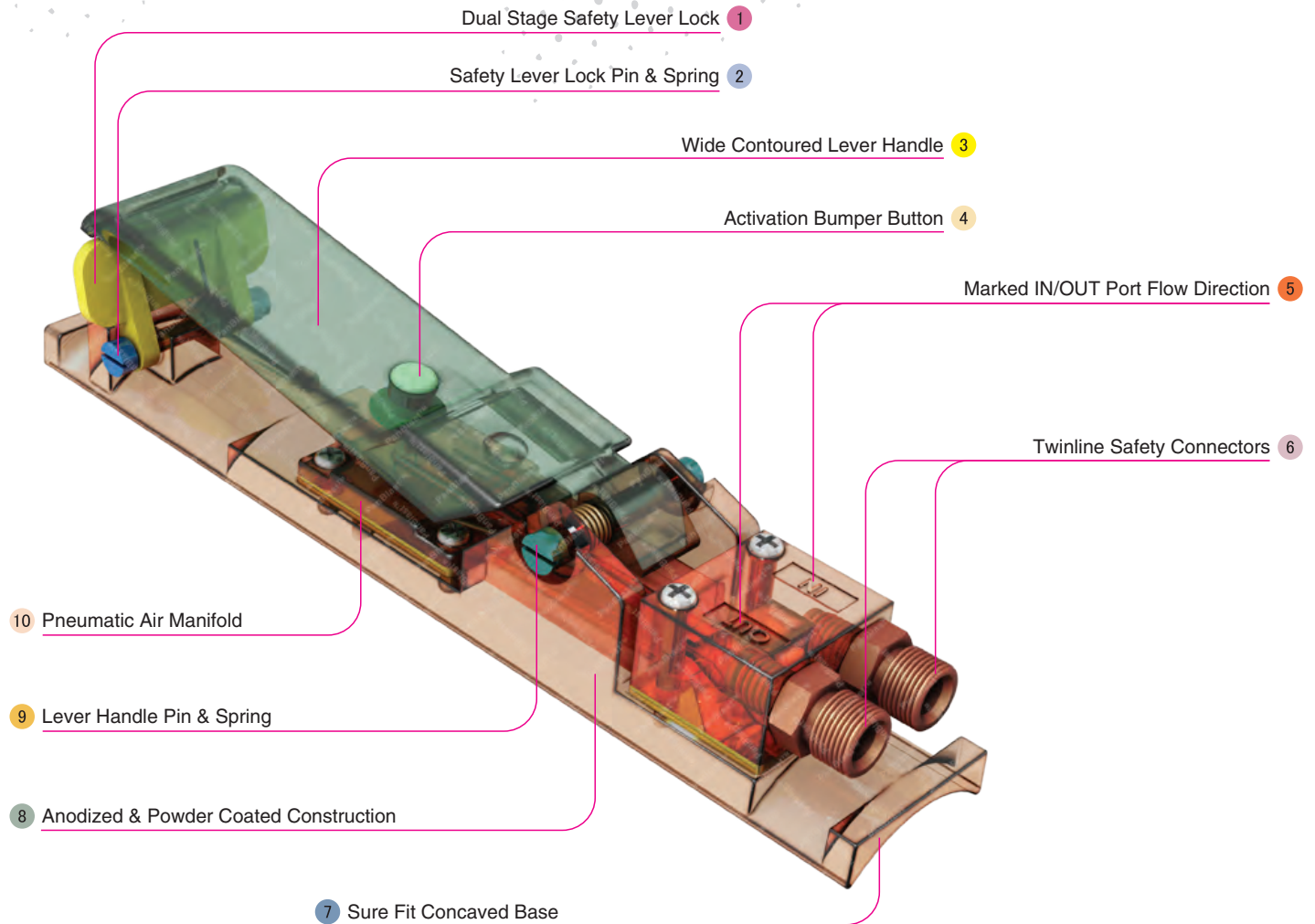
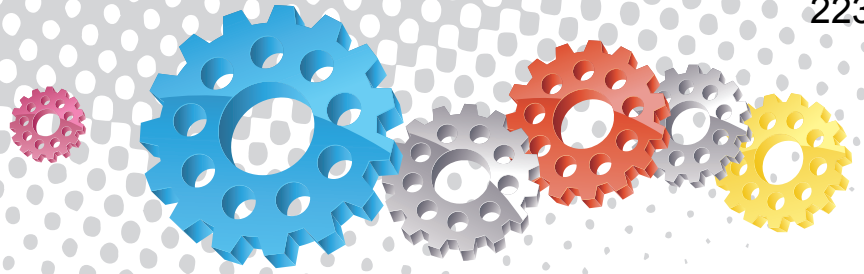
Helix 150 Remote Valve



Blast Hoses



Twinline Hose

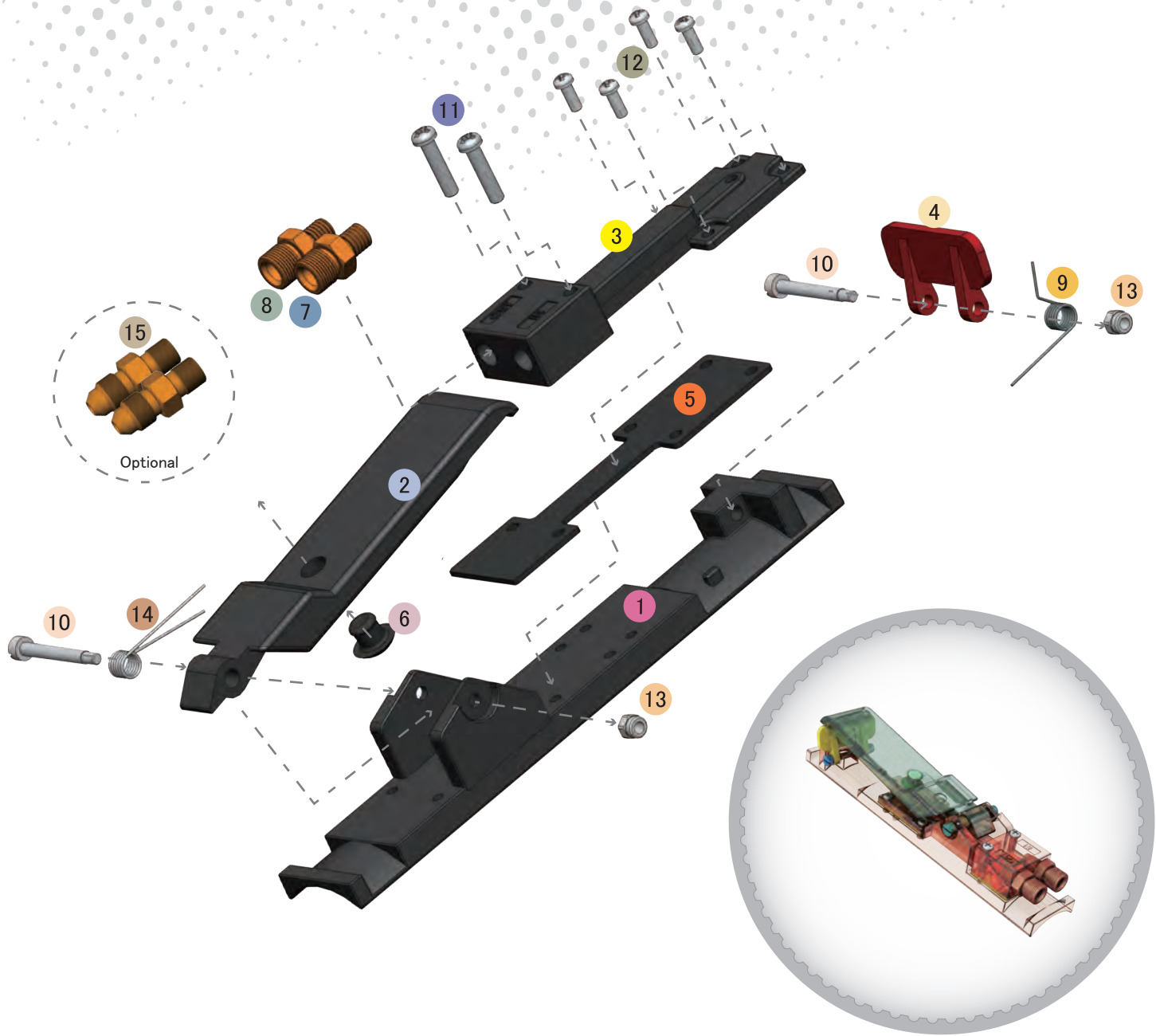
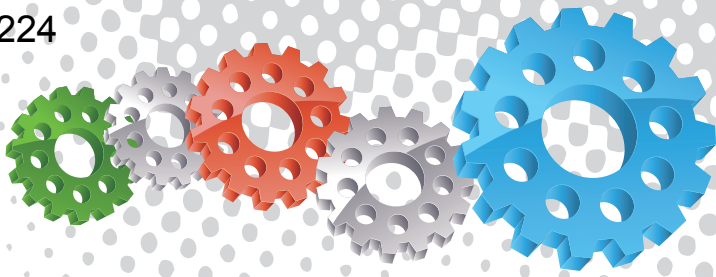


## Component Highlights



- |                                  |   |                             |
|----------------------------------|---|-----------------------------|
| 1 Dual Stage Safety Lever Lock   | 5 Marked IN/OUT Port Flow Direction     | 9 Lever Handle Pin & Spring |
| 2 Safety Lever Lock Pin & Spring | 6 Twinline Safety Connectors            | 10 Pneumatic Air Manifold   |
| 3 Wide Contoured Lever Handle    | 7 Sure Fit Concaved Base                |                             |
| 4 Activation Bumper Button       | 8 Anodized & Powder Coated Construction |                             |





## Assembly

Stock Code	Description	Weight
BAC-RC-PB-0139	AirFlo NPT Pneumatic Control Handle	0.43 kg (0.95 lbs)

## Service Kits

Stock Code	Description	Include Items
BAC-RC-0524-00	AirFlo UNF Control Handle Service Kit	4 6 9 10 11 12 13 14 15 X 2
BAC-RC-PB-0116	AirFlo Bumper Kit	6 X 6
BAC-RC-PB-0117	AirFlo Lever Spring Kit	14 X 6



## Parts List



Description	Qty	Description	Qty	Description	Qty
1 Body	1	6 Bumper Button	1	11 Screw	2
2 AirFlo NPT Lever	1	7 Nipple-NPT-Restricted	1	12 Screw	4
3 Manifold	1	8 Nipple-NPT-Un-Restricted	1	13 Lock Nut	2
4 Lever Safety Lock	1	9 Safety Lock Spring	1	14 Lever Spring	1
5 Gasket	1	10 Screw	2	15 NPT/UNF Reducing Nipple	2

Архангельск (8182)63-90-72  
Астана (7172)727-132  
Астрахань (8512)99-46-04  
Барнаул (3852)73-04-60  
Белгород (4722)40-23-64  
Брянск (4832)59-03-52  
Владивосток (423)249-28-31  
Волгоград (844)278-03-48  
Вологда (8172)26-41-59  
Воронеж (473)204-51-73  
Екатеринбург (343)384-55-89  
Иваново (4932)77-34-06

Ижевск (3412)26-03-58  
Иркутск (395)279-98-46  
Казань (843)206-01-48  
Калининград (4012)72-03-81  
Калуга (4842)92-23-67  
Кемерово (3842)65-04-62  
Киров (8332)68-02-04  
Краснодар (861)203-40-90  
Красноярск (391)204-63-61  
Курск (4712)77-13-04  
Липецк (4742)52-20-81

Киргизия (996)312-96-26-47

Магнитогорск (3519)55-03-13  
Москва (495)268-04-70  
Мурманск (8152)59-64-93  
Набережные Челны (8552)20-53-41  
Нижний Новгород (831)429-08-12  
Новокузнецк (3843)20-46-81  
Новосибирск (383)227-86-73  
Омск (3812)21-46-40  
Орел (4862)44-53-42  
Оренбург (3532)37-68-04  
Пенза (8412)22-31-16

Россия (495)268-04-70

Пермь (342)205-81-47  
Ростов-на-Дону (863)308-18-15  
Рязань (4912)46-61-64  
Самара (846)206-03-16  
Санкт-Петербург (812)309-46-40  
Саратов (845)249-38-78  
Севастополь (8692)22-31-93  
Симферополь (3652)67-13-56  
Смоленск (4812)29-41-54  
Сочи (862)225-72-31  
Ставрополь (8652)20-65-13

Казахстан (772)734-952-31

Сургут (3462)77-98-35  
Тверь (4822)63-31-35  
Томск (3822)98-41-53  
Тула (4872)74-02-29  
Тюмень (3452)66-21-18  
Ульяновск (8422)24-23-59  
Уфа (347)229-48-12  
Хабаровск (4212)92-98-04  
Челябинск (351)202-03-61  
Череповец (8202)49-02-64  
Ярославль (4852)69-52-93

[www.panblast.nt-rt.ru](http://www.panblast.nt-rt.ru) | | [pav@nt-rt.ru](mailto:pav@nt-rt.ru)