

Архангельск (8182)63-90-72
Астана (7172)727-132
Астрахань (8512)99-46-04
Барнаул (3852)73-04-60
Белгород (4722)40-23-64
Брянск (4832)59-03-52
Владивосток (423)249-28-31
Волгоград (844)278-03-48
Вологда (8172)26-41-59
Воронеж (473)204-51-73
Екатеринбург (343)384-55-89
Иваново (4932)77-34-06

Ижевск (3412)26-03-58
Иркутск (395)279-98-46
Казань (843)206-01-48
Калининград (4012)72-03-81
Калуга (4842)92-23-67
Кемерово (3842)65-04-62
Киров (8332)68-02-04
Краснодар (861)203-40-90
Красноярск (391)204-63-61
Курск (4712)77-13-04
Липецк (4742)52-20-81

Киргизия (996)312-96-26-47

Магнитогорск (3519)55-03-13
Москва (495)268-04-70
Мурманск (8152)59-64-93
Набережные Челны (8552)20-53-41
Нижний Новгород (831)429-08-12
Новокузнецк (3843)20-46-81
Новосибирск (383)227-86-73
Омск (3812)21-46-40
Орел (4862)44-53-42
Оренбург (3532)37-68-04
Пенза (8412)22-31-16

Россия (495)268-04-70

Пермь (342)205-81-47
Ростов-на-Дону (863)308-18-15
Рязань (4912)46-61-64
Самара (846)206-03-16
Санкт-Петербург (812)309-46-40
Саратов (845)249-38-78
Севастополь (8692)22-31-93
Симферополь (3652)67-13-56
Смоленск (4812)29-41-54
Сочи (862)225-72-31
Ставрополь (8652)20-65-13

Казахстан (772)734-952-31

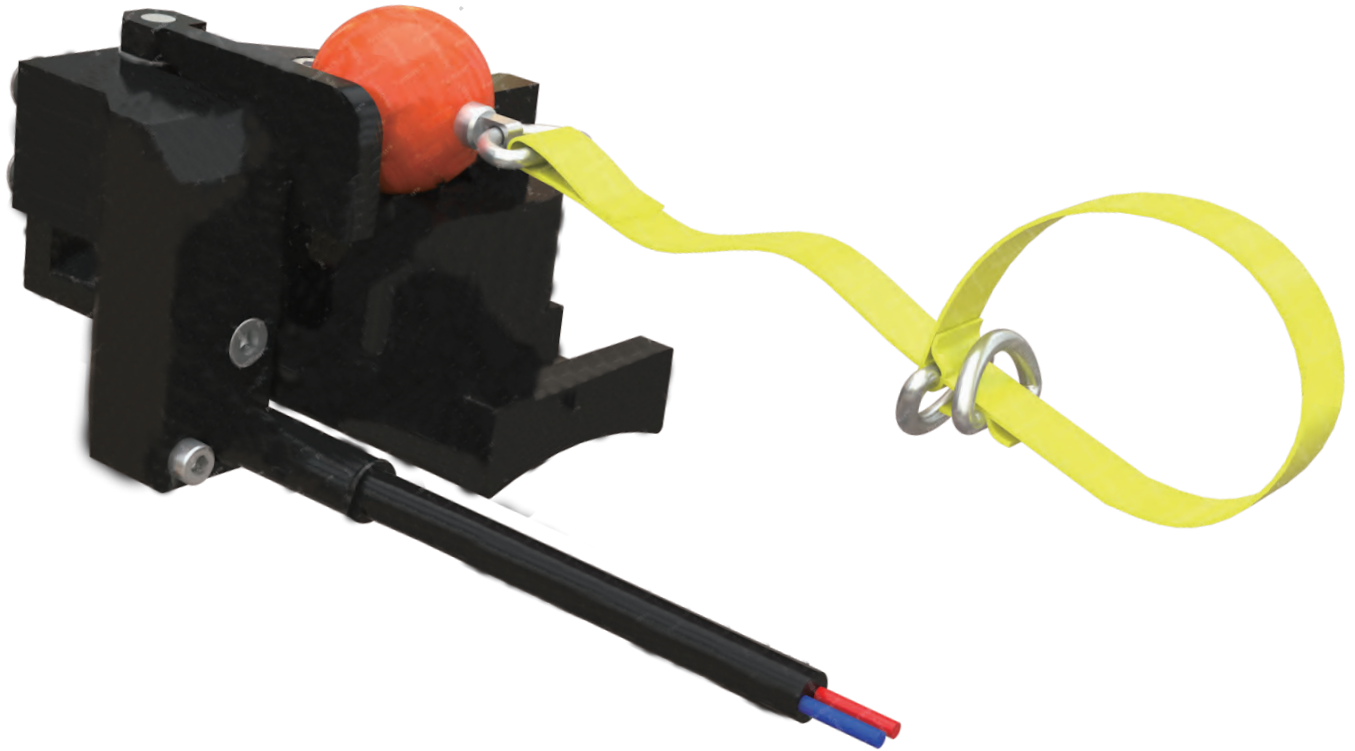
Сургут (3462)77-98-35
Тверь (4822)63-31-35
Томск (3822)98-41-53
Тула (4872)74-02-29
Тюмень (3452)66-21-18
Ульяновск (8422)24-23-59
Уфа (347)229-48-12
Хабаровск (4212)92-98-04
Челябинск (351)202-03-61
Череповец (8202)49-02-64
Ярославль (4852)69-52-93

www.panblast.nt-rt.ru | | pav@nt-rt.ru

Технические характеристики на электрические ручки управления (ручки дистанционного управления) компании **PanBlast**



QuikStop IIS Electric Control Handle



Product Features

The PanBlast™ QuikStop IIS Electric Control Handle is an ultra compact ergonomic deadman device, allowing an operator to safely operate the blast nozzle without a conventional hold down handle, thus reducing operator fatigue. It can be used for control distances up to 100 m (328 ft).

- ▶ Simple ball and wrist strap device.
- ▶ Control distances up to 100 m (328 ft).
- ▶ Immediate electric control signal shutoff if blast hose is dropped.
- ▶ Reduces operator fatigue.

Common Applications

- ▶ General abrasive blasting operations.
- ▶ Operations requiring extended blasting uptime.

Complementary Products



Kombi Remote Valve



Kombi II Remote Valve



Corsa II Valve



Tandem Inlet Valve



AirFlo Pneumatic Handle



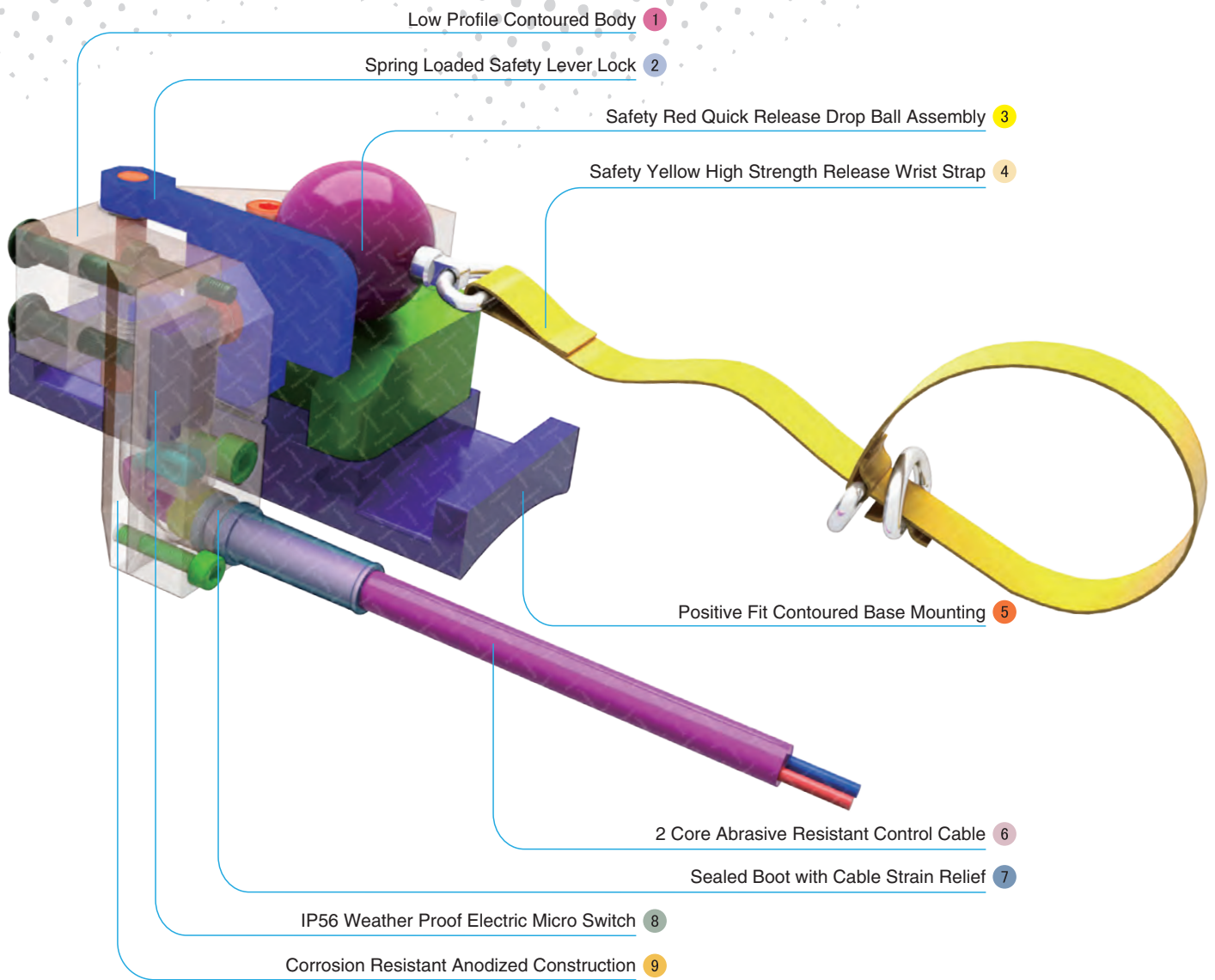
Corsa Valve



Blast Hoses



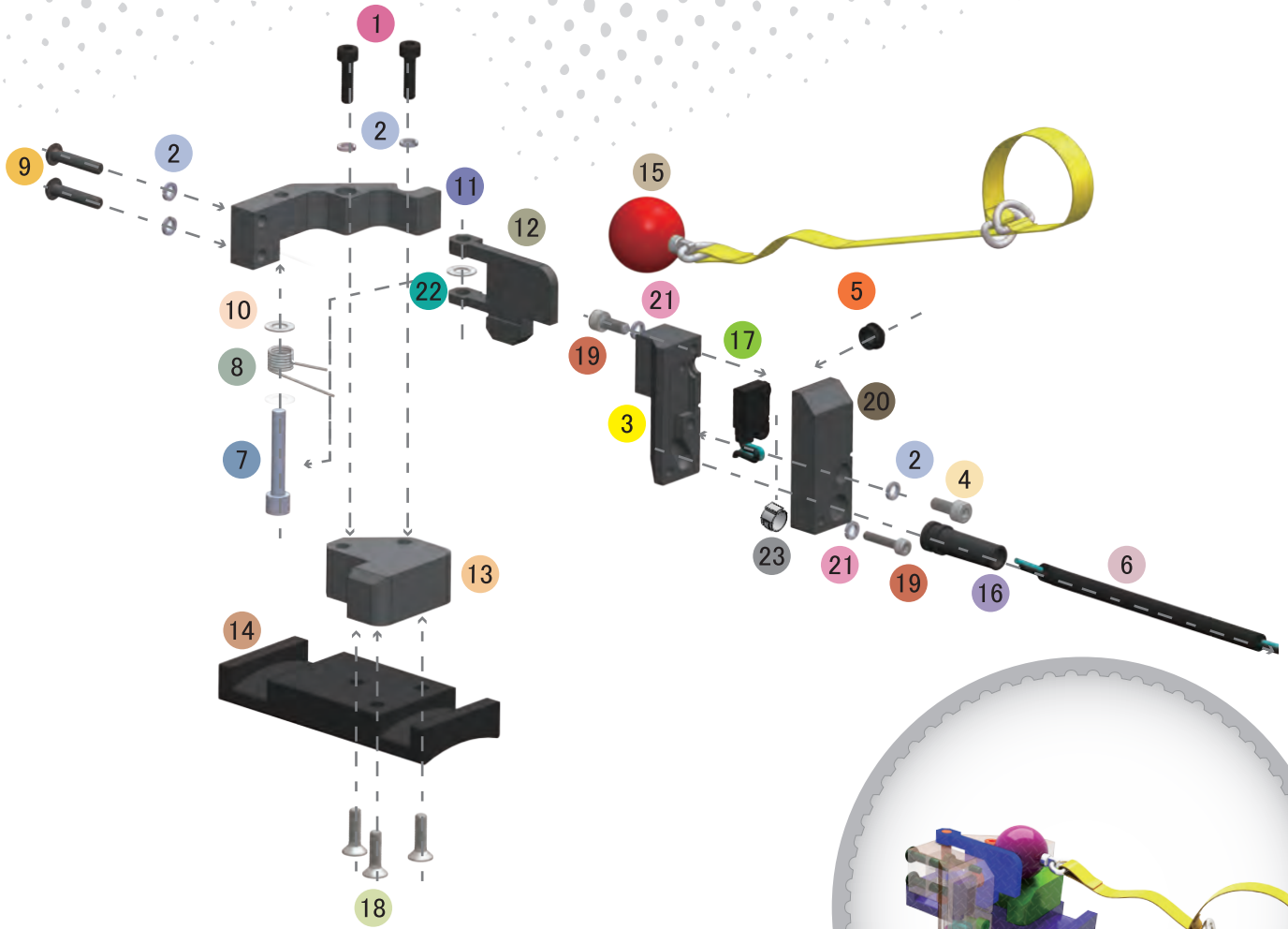
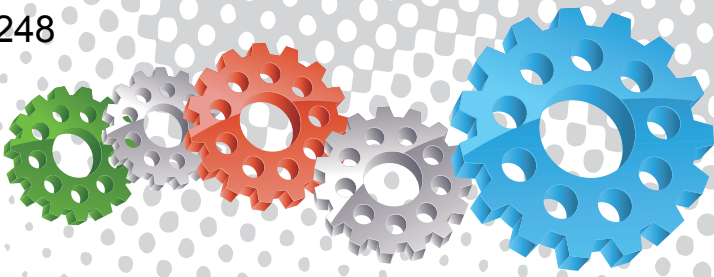
Electric Remote Systems



Component Highlights



- | | | |
|---|---|---|
| 1 Low Profile Contoured Body | 4 Safety Yellow High Strength Release Wrist Strap | 7 Sealed Boot with Cable Strain Relief |
| 2 Spring Loaded Safety Lever Lock | 5 Positive Fit Contoured Base Mounting | 8 IP56 Weather Proof Electric Micro Switch |
| 3 Safety Red Quick Release Drop Ball Assembly | 6 2 Core Abrasive Resistant Control Cable | 9 Corrosion Resistant Anodized Construction |

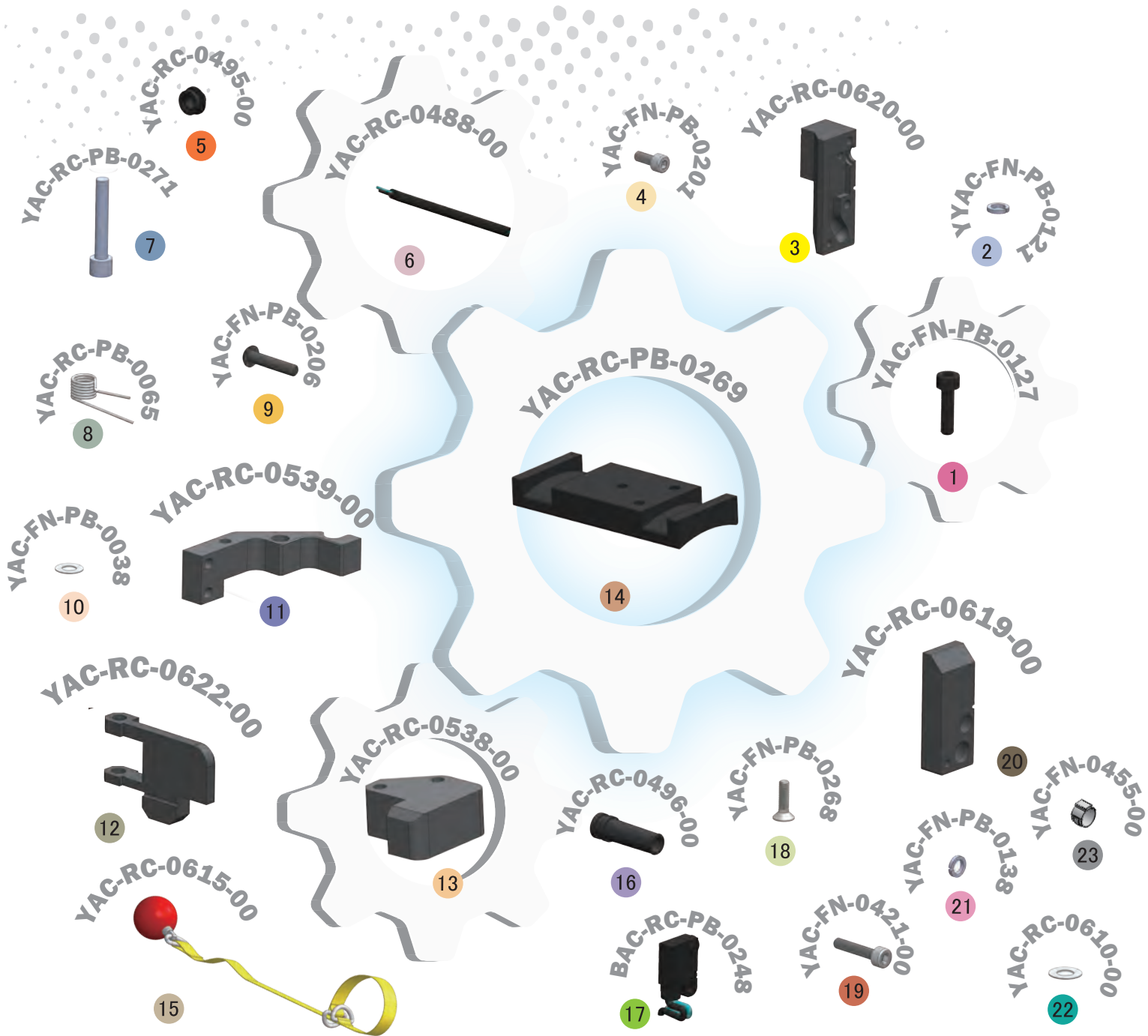


Assembly

Stock Code
BAC-RC-0612-00

Description
QuikStop IIS Electric Control Handle

Weight
0.3 kg (10.6 lbs)



Parts List



Description	Qty	Description	Qty	Description	Qty
1 Screw	2	9 Screw	2	17 Electric Switch	1
2 Spring Washer	5	10 Flat Washer	1	18 Screw	3
3 Lower Block	1	11 Mounting Bracket	1	19 Screw	2
4 Screw	1	12 Safety Lock Lever	1	20 Upper Block	1
5 Button Cap	1	13 Mounting Block	1	21 Spring Washer	2
6 Cable	0.8 m	14 Base	1	22 Shim Washer	1
7 Pin	1	15 Ball With Strap	1	23 Single Ear Clamp	1
8 Safety Lock Spring	1	16 Cable Protector	1		



AirFlo Electric Control Handle



Product Features

The PanBlast™ AirFlo Electric Remote Control Handle connects to the blast pot electric remote control via a single cable, and allows the operator to actuate the remote control valve from the blast nozzle position. Releasing the control handle immediately closes the control valve.

- ▶ 12V or 24V operation.
- ▶ Other voltages available on request.
- ▶ Deadman style operation for safety.
- ▶ Improved switch and repositioned handle for reliable, effective operation.
- ▶ Service kits available.

Common Applications

- ▶ Long-blasting hose applications.
- ▶ Blasting operations requiring quick valve reaction.

Complementary Products



Sola 5 Inlet Valve



Sola 10 Inlet Valve



Sola 30 Inlet Valve



UniFlo Remote Valve



QuikStop IIS Pneumatic Handle



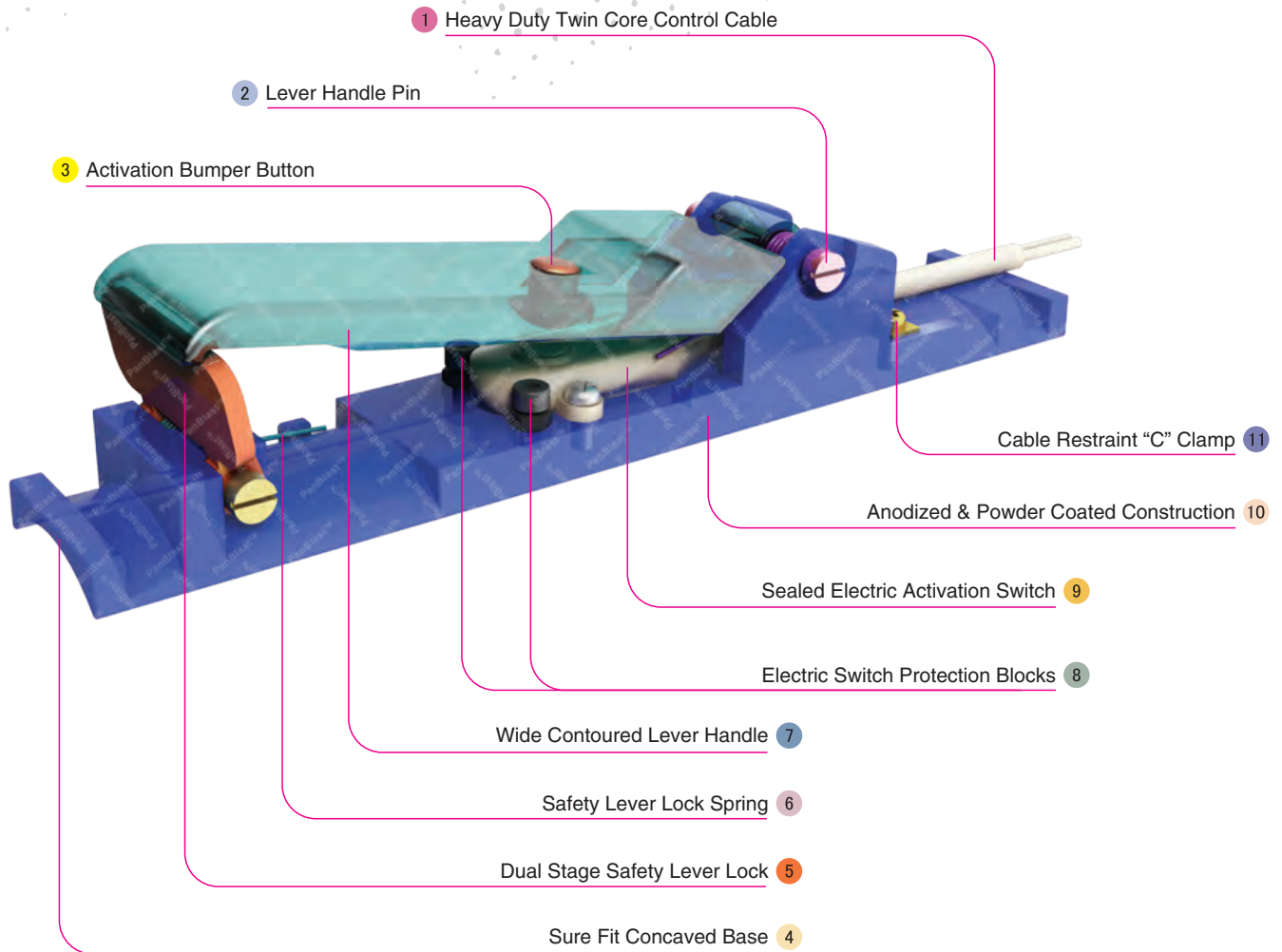
Helix 150 Remote Valve



Blast Hoses



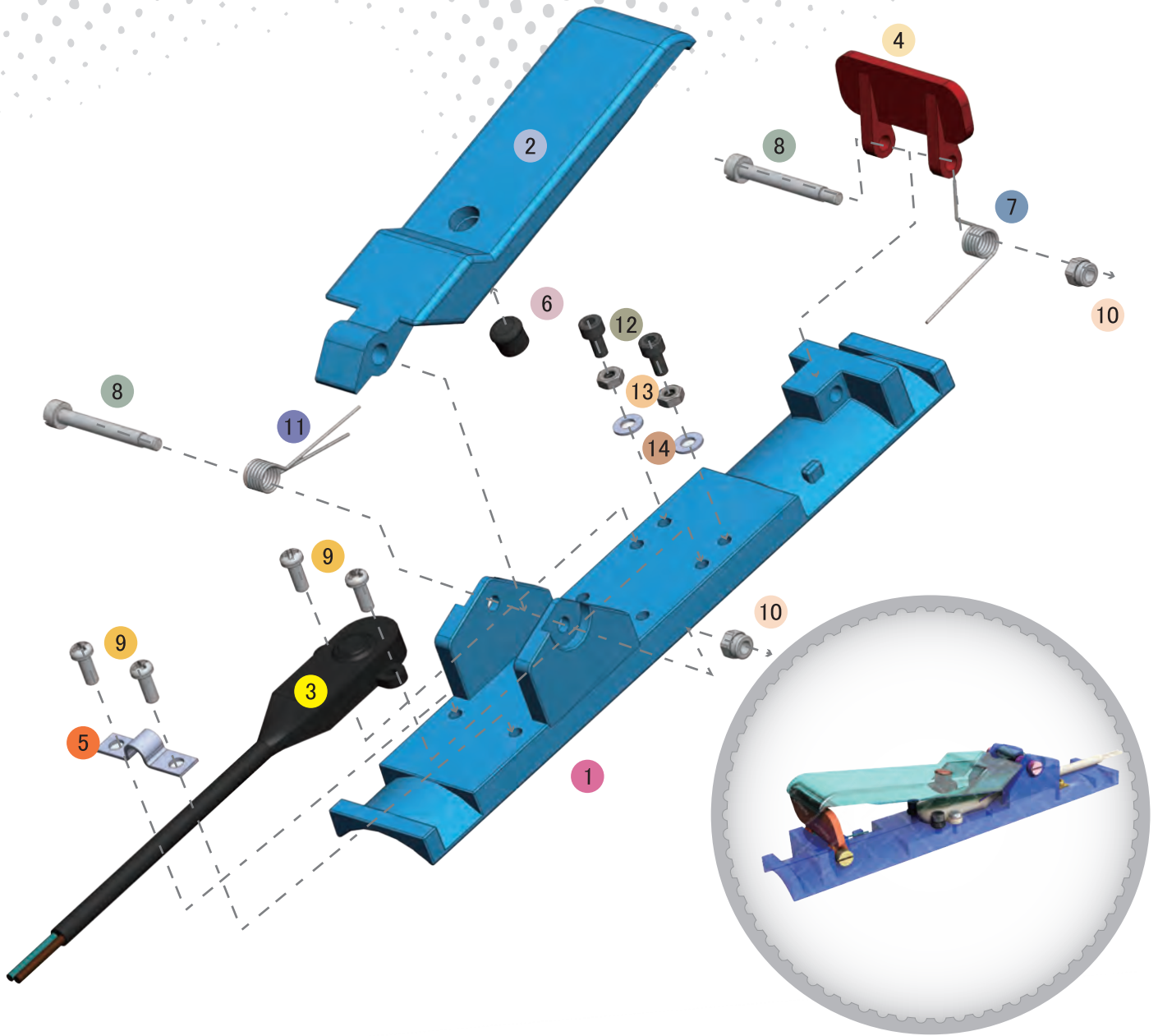
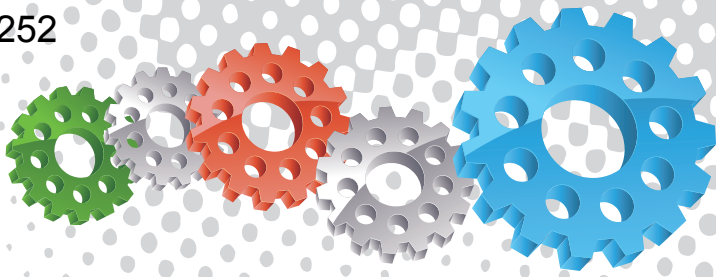
Electric Remote System



Component Highlights



- | | | |
|--------------------------------------|-------------------------------------|--|
| 1 Heavy Duty Twin Core Control Cable | 5 Dual Stage Safety Lever Lock | 9 Sealed Electric Activation Switch |
| 2 Lever Handle Pin | 6 Safety Lever Lock Spring | 10 Anodized & Powder Coated Construction |
| 3 Activation Bumper Button | 7 Wide Contoured Lever Handle | 11 Cable Restraint "C" Clamp |
| 4 Sure Fit Concaved Base | 8 Electric Switch Protection Blocks | |

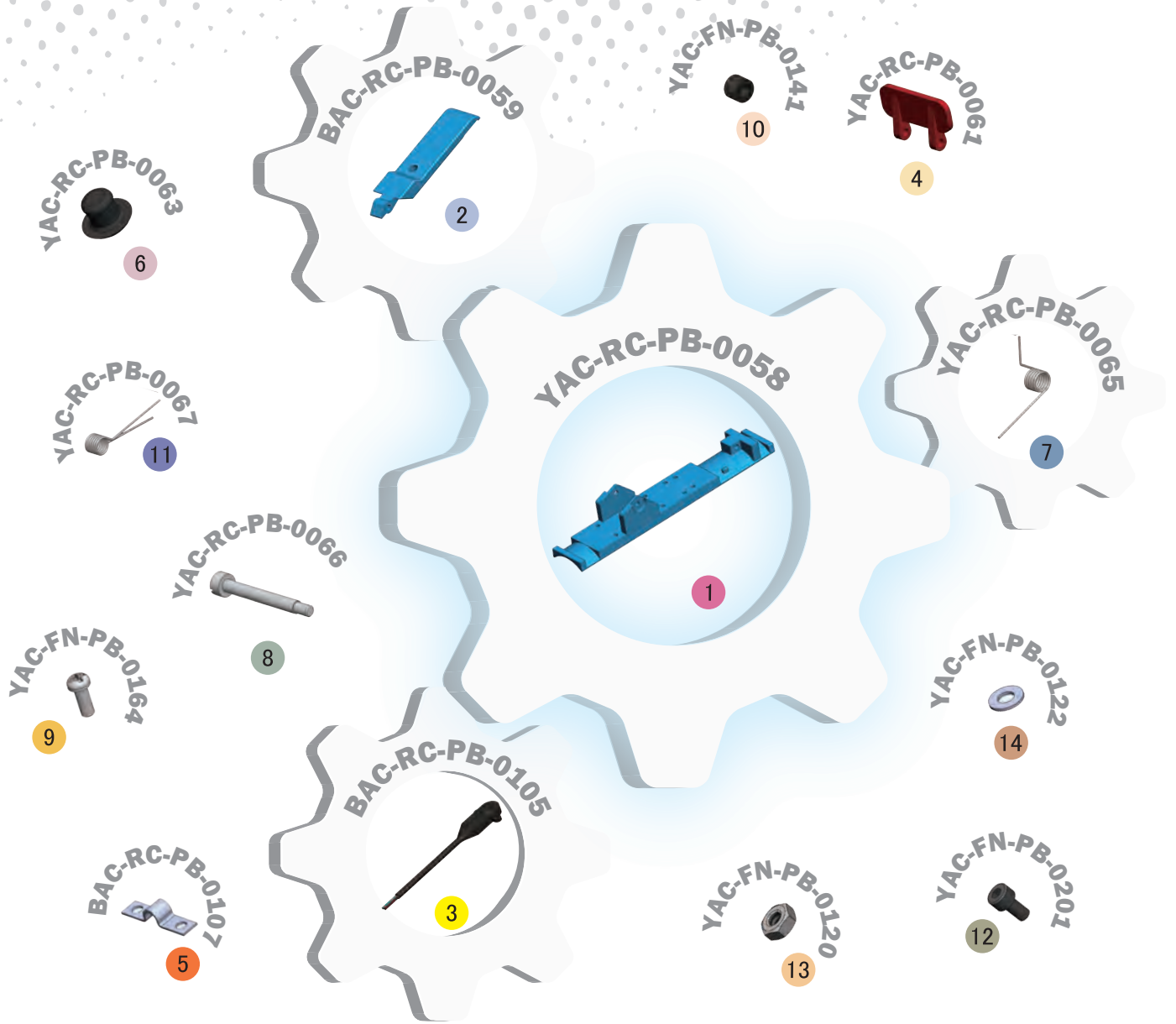


Assembly

Stock Code	Description	Weight
BAC-RC-PB-0104	AirFlo Electric Control Handle	0.40 kg (0.88 lbs)

Service Kits

Stock Code	Description	Include Items
BAC-RC-PB-0116	AirFlo Bumper Kit	6 x6
BAC-RC-PB-0117	AirFlo Lever Spring Kit	11 x6



Parts List



Description	Qty	Description	Qty	Description	Qty
1 Body	1	6 Bumper Button	1	11 Lever Spring	1
2 Lever	1	7 Safety Lock Spring	1	12 Screw	2
3 Electric Switch	1	8 Screw	2	13 Nut	2
4 Lever Safety Lock	1	9 Screw	4	14 Flat Washer	2
5 Switch Cable Harness	1	10 Lock Nut	2		



AirStop Electric Control Handle



Product Features

The PanBlast™ AirStop Electric Remote Control Handle connects to the blast pot electric remote control via a single cable, and allows the operator to actuate the remote control valve from the blast nozzle position. Releasing the control handle immediately closes the control valve.

- ▶ 12V or 24V operation.
- ▶ Other voltages available on request.
- ▶ Deadman style operation for safety.
- ▶ Spring loaded safety button.

Common Applications

- ▶ Long-blasting hose applications.
- ▶ Blasting operations requiring quick valve reaction.

Complementary Products



Kombi Remote Valve



Kombi II Remote Valve



Corsa II Valve



Tandem Inlet Valve



AirFlo Pneumatic Handle



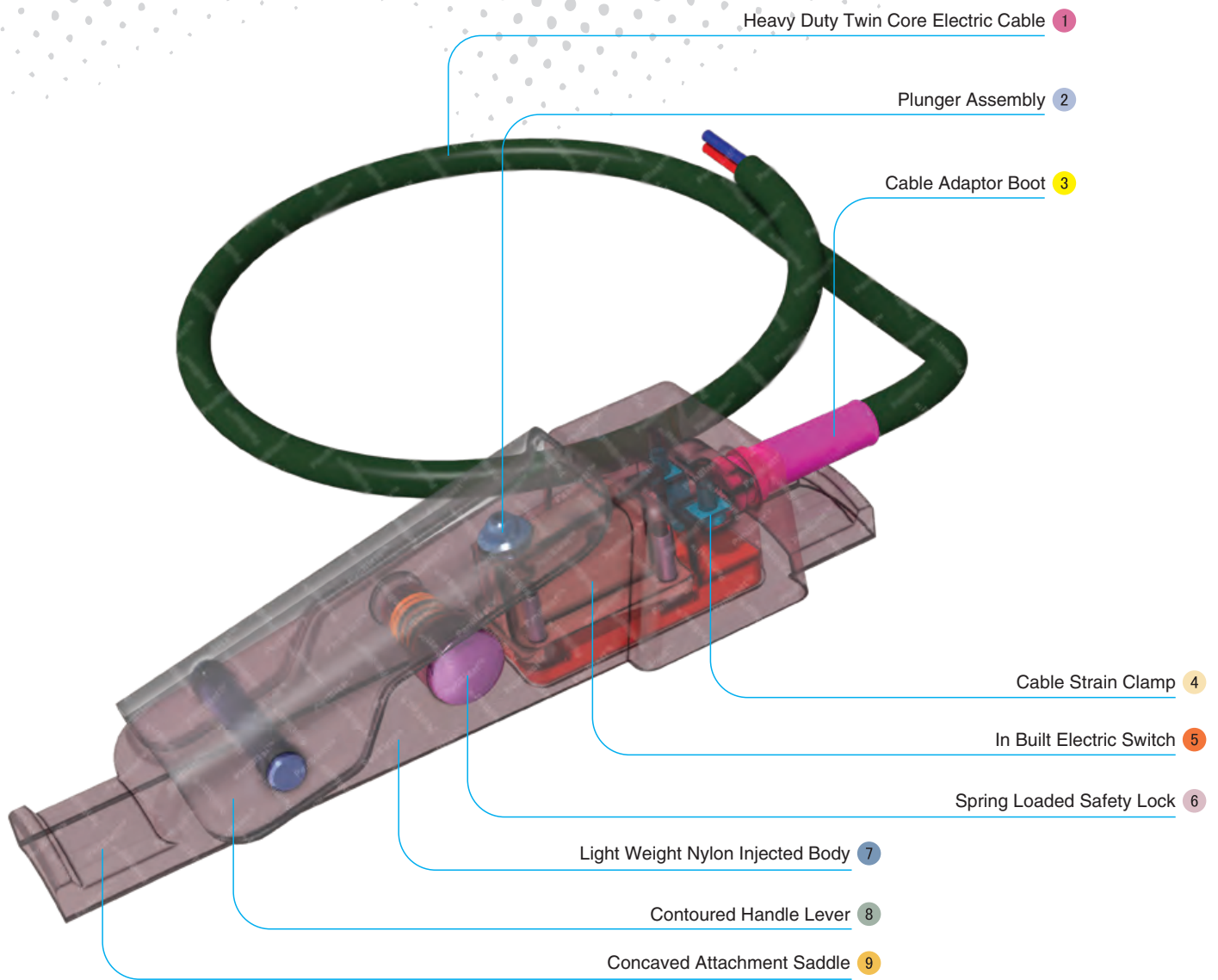
Corsa Valve



Blast Hoses



Electric Remote Systems



Component Highlights



- | | | |
|---------------------------------------|-----------------------------|------------------------------------|
| 1 Heavy Duty Twin Core Electric Cable | 4 Cable Strain Clamp | 7 Light Weight Nylon Injected Body |
| 2 Plunger Assembly | 5 In Built Electric Switch | 8 Contoured Handle Lever |
| 3 Cable Adaptor Boot | 6 Spring Loaded Safety Lock | 9 Concaved Attachment Saddle |



Assembly

Stock Code
BAC-RC-0237-05

Description
AirStop Electric Control Handle

Weight
0.28 kg (0.616 lbs)



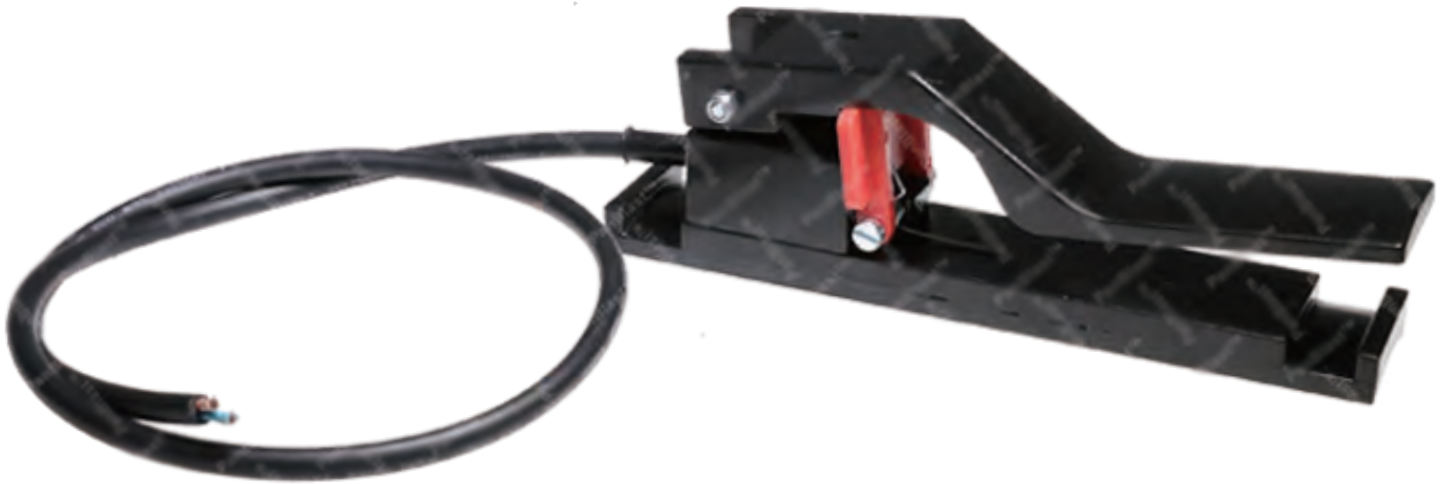
Parts List



Description	Qty	Description	Qty	Description	Qty
1 Body	1	7 Bottom Cover	1	13 Screw	1
2 Electric Switch	1	8 Hinge Pin	1	14 Button Cap	1
3 Cable	1	9 Lever	1	15 Cable Protector	1
4 Switch Seat	1	10 Button	1	16 Half Clamp	1
5 Screw	4	11 Spring	1	17 Screw	2
6 Pin	1	12 Flat Washer	1		



AirStop II Electric Control Handle



Product Features

The PanBlast™ AirStop II Electric Remote Control Handle provides the same simple, reliable operation as the original AirStop Electric Handle, and incorporates new features for operator comfort and safety.

- ▶ 12V or 24V operation.
- ▶ Other voltages available on request.
- ▶ Ergonomic handle design.
- ▶ Long-travel, spring-loaded safety lever.
- ▶ Deadman style operation for safety.

Common Applications

- ▶ Long-blasting hose applications.
- ▶ Replacement of OEM electric control handles.

Complementary Products



Kombi Remote Valve



Kombi II Remote Valve



Corsa II Valve



Tandem Inlet Valve



AirFlo Pneumatic Handle



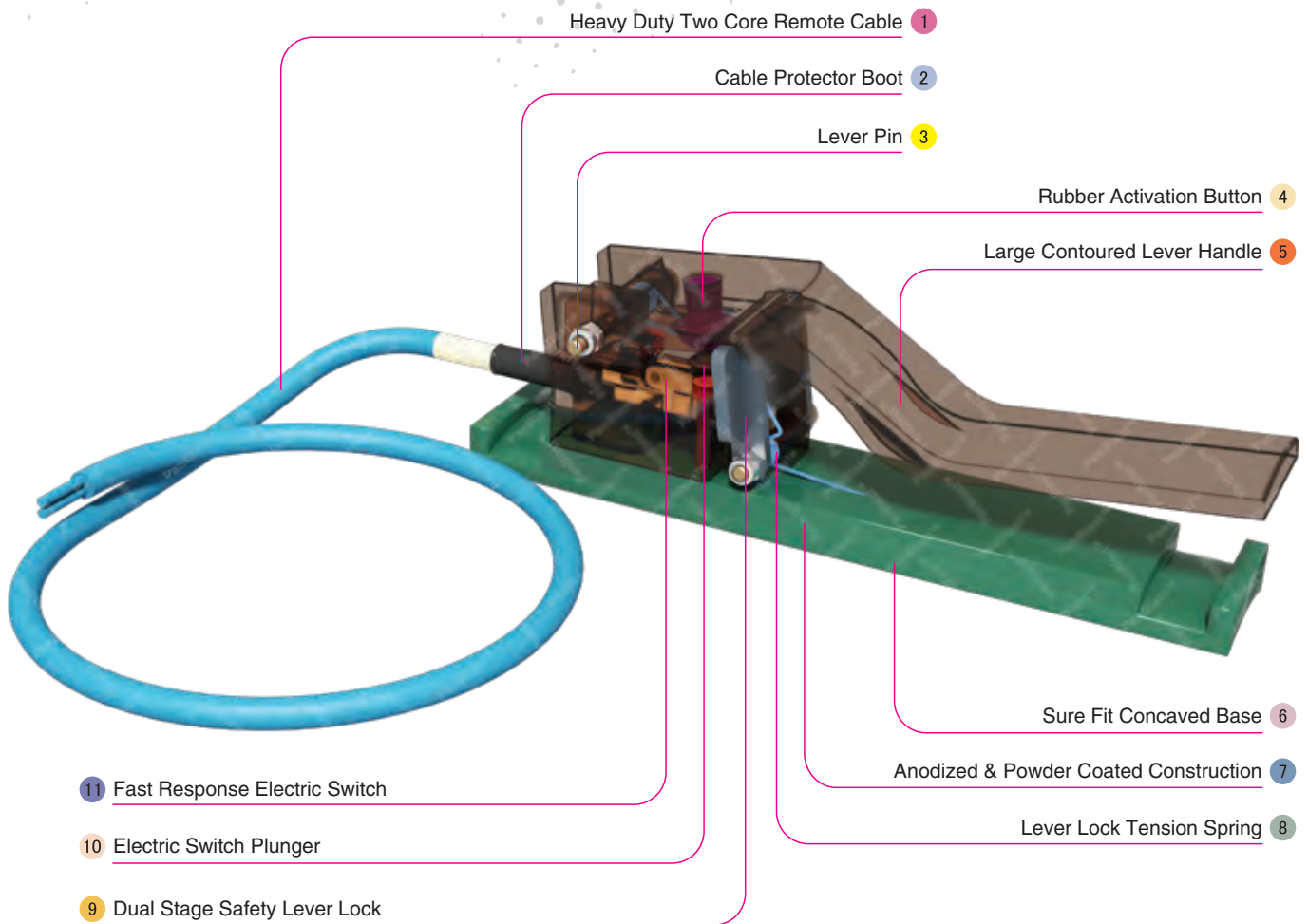
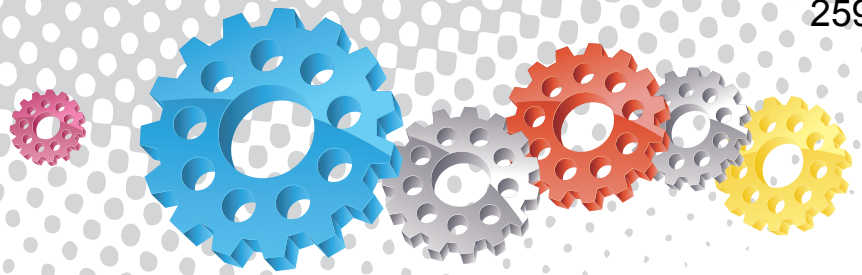
Corsa Valve



Blast Hoses



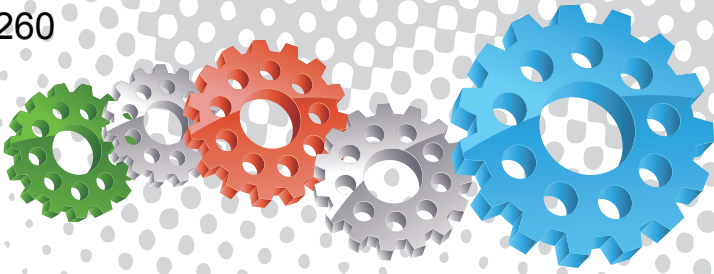
Electric Remote Systems



Component Highlights



- | | | |
|------------------------------------|---|----------------------------------|
| 1 Heavy Duty Two Core Remote Cable | 5 Large Contoured Lever Handle | 9 Dual Stage Safety Lever Lock |
| 2 Cable Protector Boot | 6 Sure Fit Concaved Base | 10 Electric Switch Plunger |
| 3 Lever Pin | 7 Anodized & Powder Coated Construction | 11 Fast Response Electric Switch |
| 4 Rubber Activation Button | 8 Lever Lock Tension Spring | |



Assembly

Stock Code	Description	Weight
BAC-RC-0356-02	AirStop II Electric Control Handle	0.52 kg (1.14 lbs)



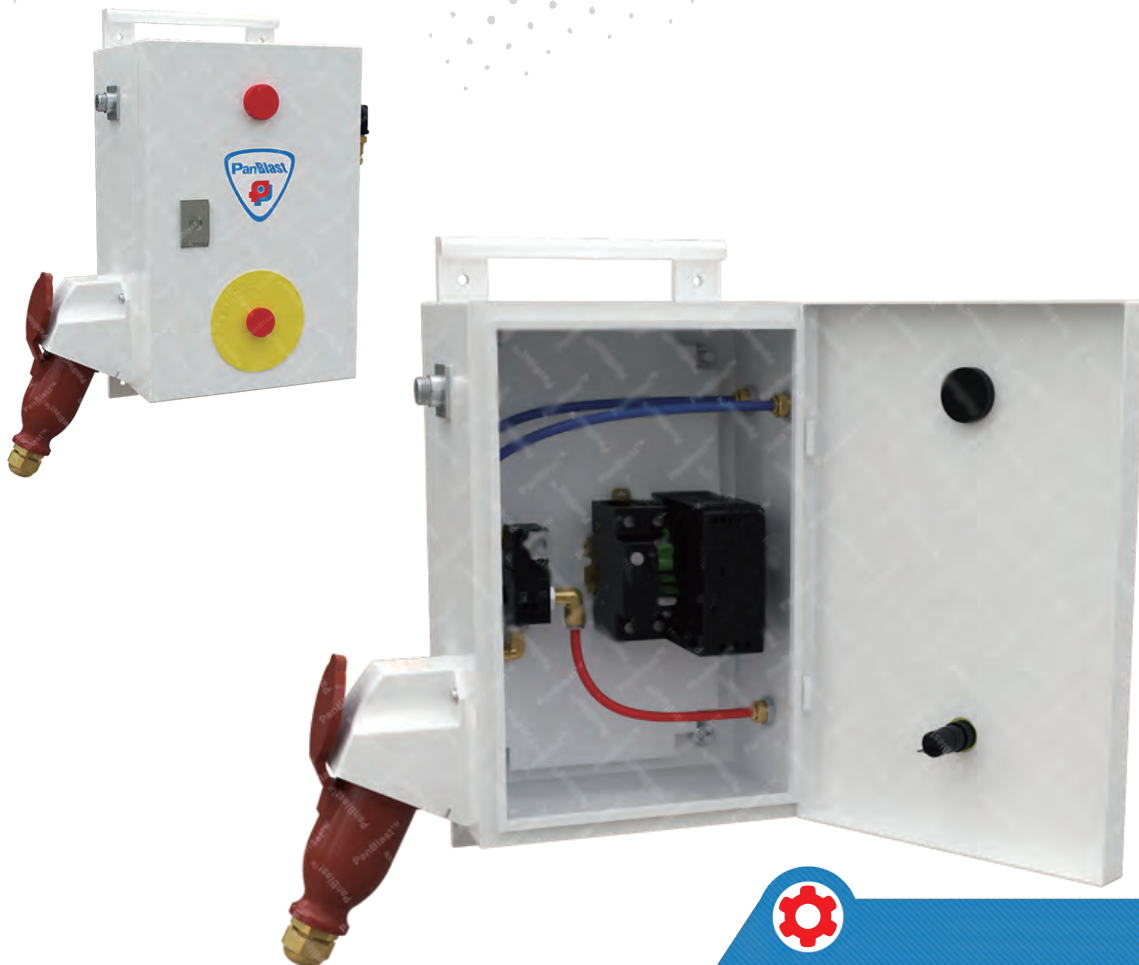
Parts List



Description	Qty	Description	Qty	Description	Qty
1 Screw	1	8 Electric Switch	1	15 Cable	1
2 Lever	1	9 Switch Protector	1	16 Cable Protect	1
3 Lever Spring	1	10 Screw	1	17 Half Clamp	1
4 Lock Nut	2	11 Base	1	18 Screw	2
5 Bumper Button	1	12 Lever Safety Lock	1	19 Button Cap	1
6 Screw	3	13 Screw	1	20 Flat Washer	2
7 Switch Holder	1	14 Spring Safety Lock	1		



ERC1-1 Electric Remote Control System



Product Features

The PanBlast™ ERC1-1 Electric Remote Control System is an integrated system featuring a weatherproof enclosure, switches, cabling and connectors for low voltage use, abrasive resistant control lines for independent activation and de-activation of blasting for a single operator. It is supplied standard with 40 m (132 ft) control lines with optional 20 m (66 ft) to 60 m (198 ft) extension control lines.

- ▶ Available to suit most site voltage requirements.
- ▶ Robust AirStop II Electric Remote Control Handle supplied standard.
- ▶ Low profile control cable connectors.
- ▶ Compliant to OSHA 1915:34(c)(1)(iv) deadman control requirements.
- ▶ Optional air blow down feature.

- ▶ Optional master control via pinch control valve.

Common Applications

- ▶ Shipyard / Marine applications utilizing multi-outlet pressure blast pots.
- ▶ Oil & Gas maintenance / shut down projects.
- ▶ Multi-operator Blast Room facilities.

Complementary Products



Blast Pots



Corsa II Valve



Electric Remote Systems



Blast Hoses



Kombi III Remote Valve



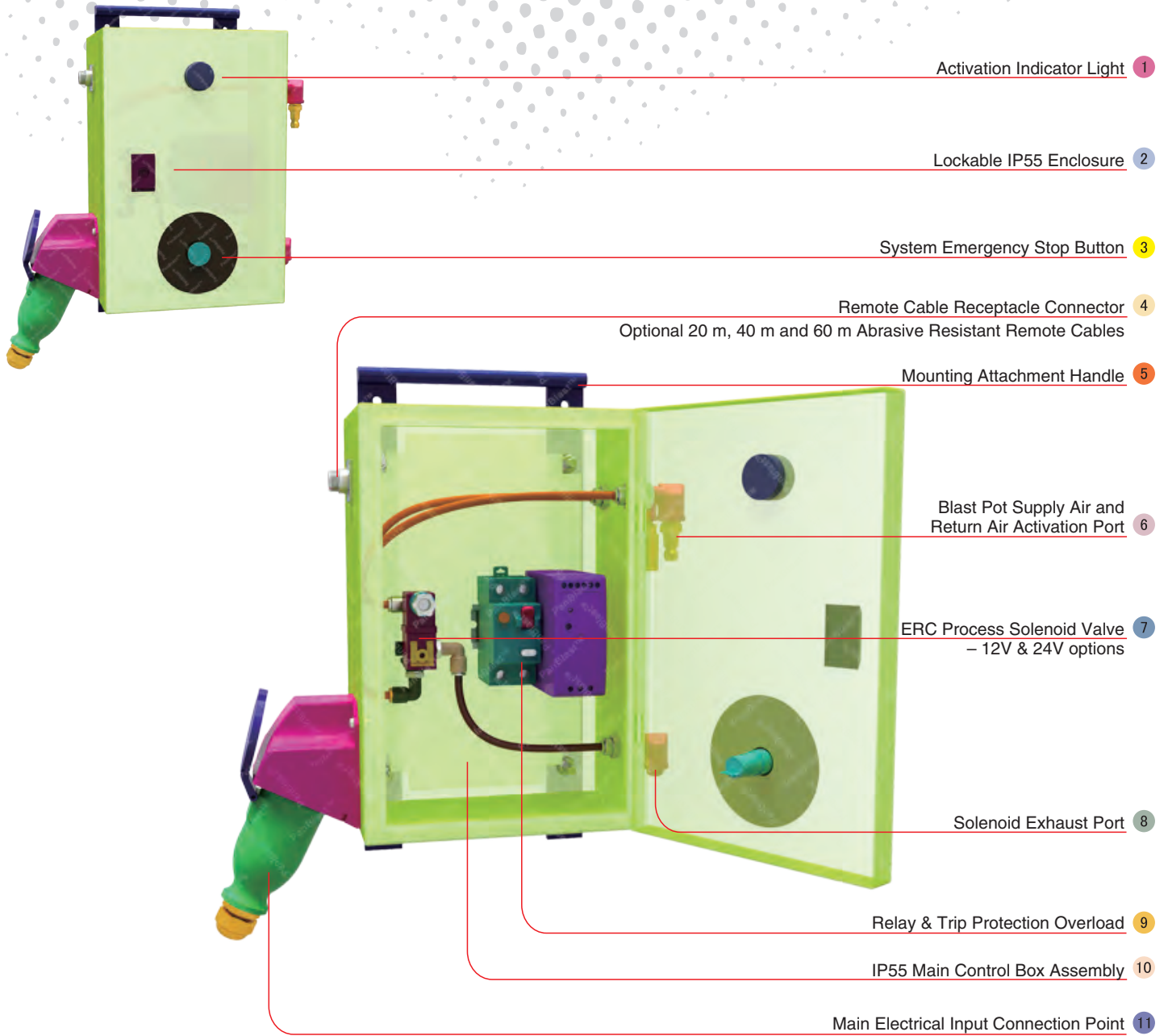
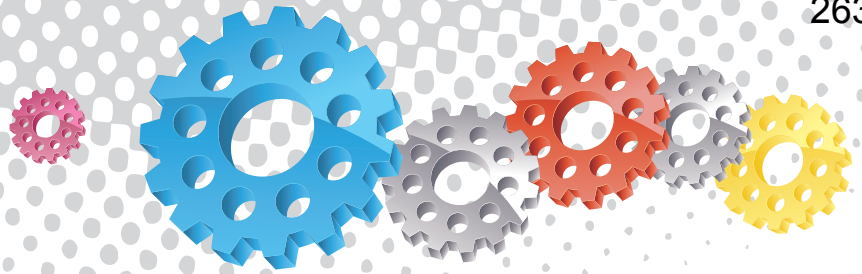
Tandem Inlet Valve



QuikStop IIS Electric Handle



AirStop II Electric Handle



All data and information subject to change without prior notice. Brochure reference CAT-0303-07-00

Component Highlights



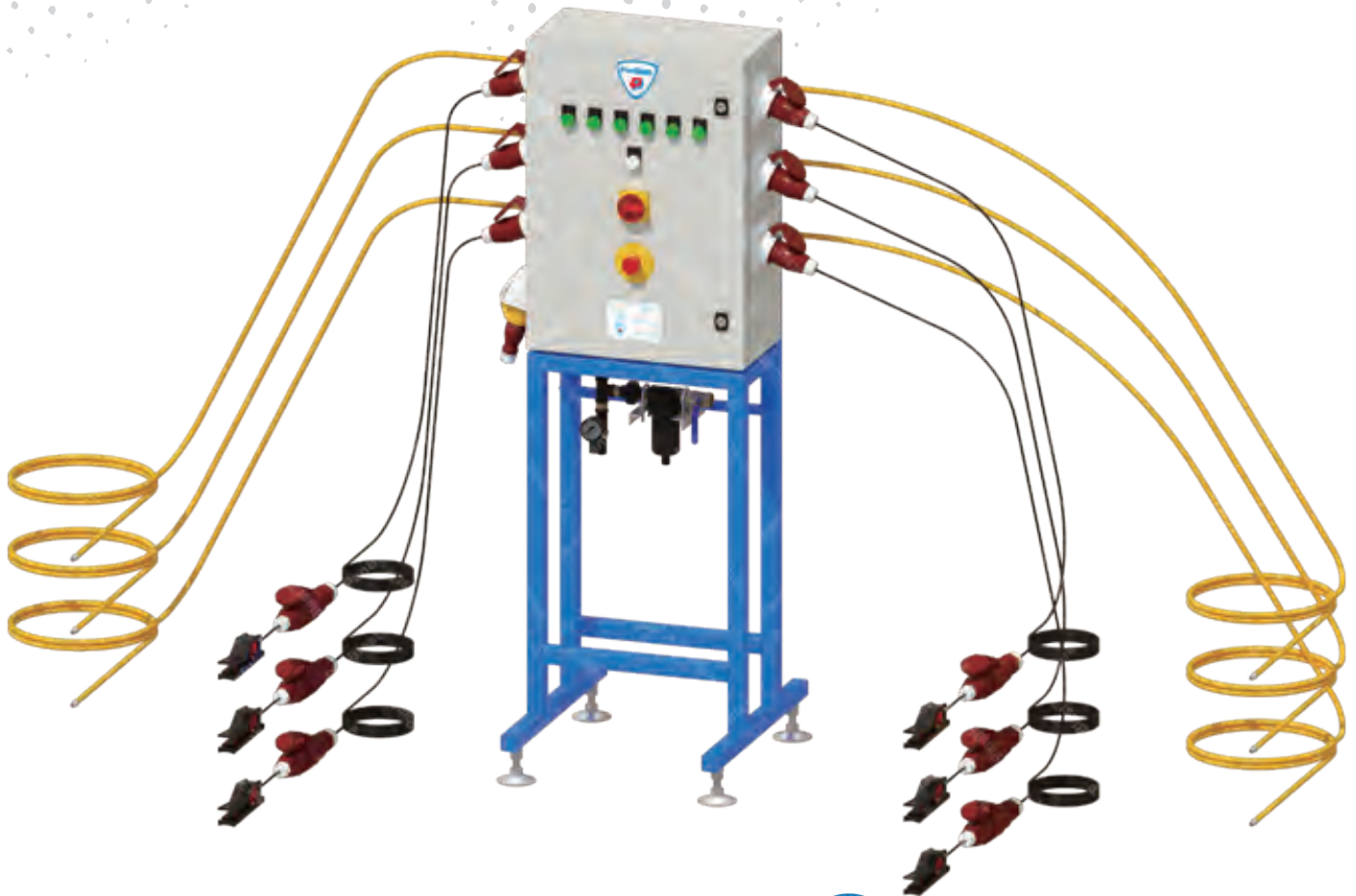
- | | | |
|-------------------------------------|---|---|
| 1 Activation Indicator Light | 5 Mounting Attachment Handle | 9 Relay & Trip Protection Overload |
| 2 Lockable IP55 Enclosure | 6 Blast Pot Supply Air and Return Air Activation Port | 10 IP55 Main Control Box Assembly |
| 3 System Emergency Stop Button | 7 ERC Process Solenoid Valve | 11 Main Electrical Input Connection Point |
| 4 Remote Cable Receptacle Connector | 8 Solenoid Exhaust Port | |

Assembly

Stock Code	Description	Weight
BAC-RC-0661-00	ERC1-1 Electric Remote Control 100 VAC	6.5 kg (14.3 lbs)



ERC6-1 Electric Remote System



Complementary Products



Blast Pots



Corsa II Valve



Titan II SAR



Blast Hoses



Kombi II Remote Valve



Tandem Inlet Valve



QuikStop IIS Electric Handle



AirStop II Electric Handle



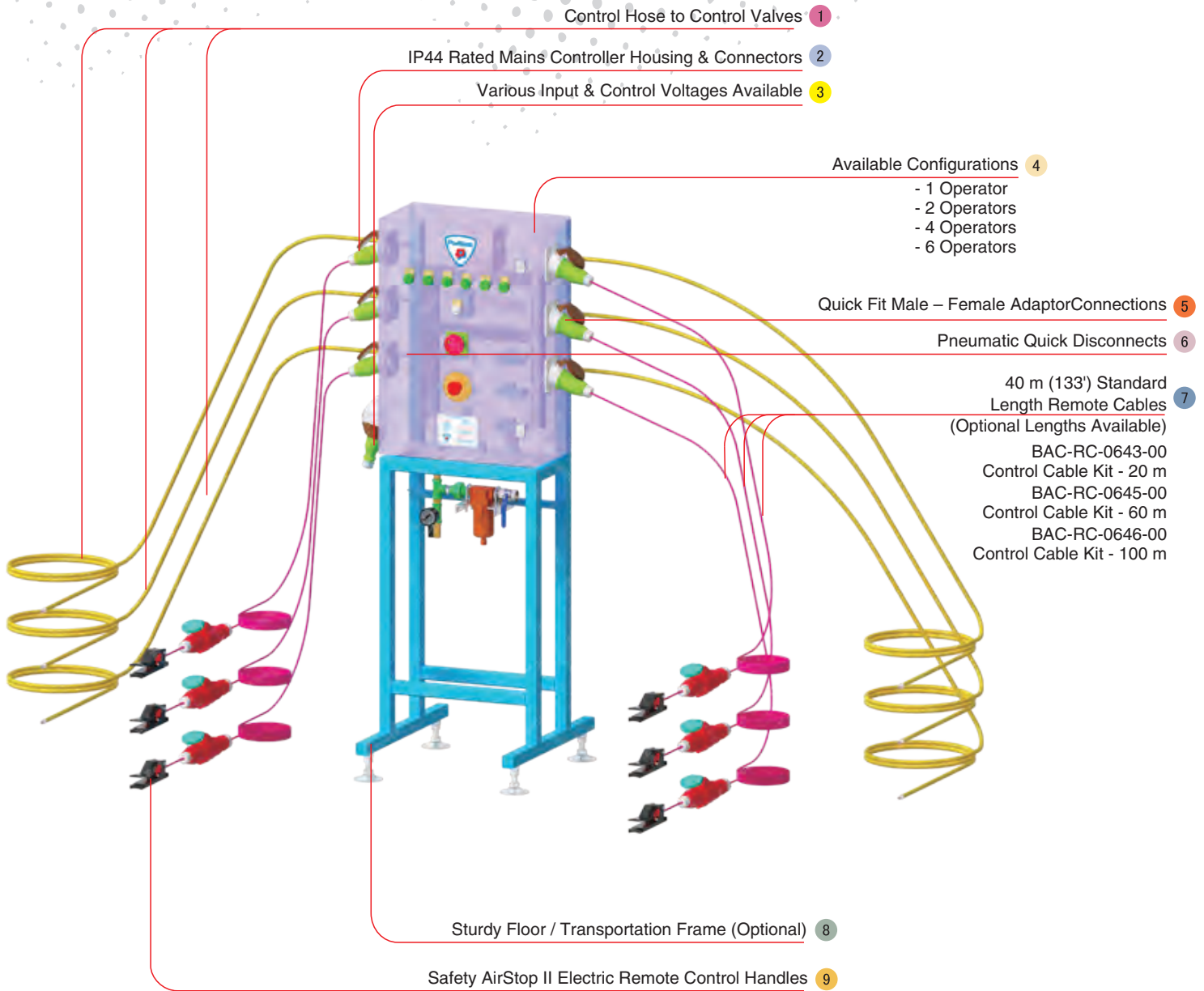
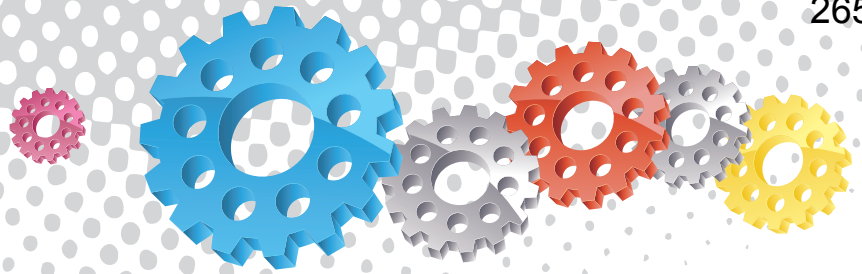
Product Features

The PanBlast™ 6 Man Electric Remote System with Stand is an integrated system featuring a weatherproof enclosure, switches, cabling and connectors with low voltage, abrasive resistant control lines for independent activation and de-activation of blasting for up to six blasting operators, and is supplied standard with 40 meter (132ft) control lines with optional 20 meter (66ft) to 60 meter(198ft) extension control lines.

- ▶ Available to suit most site voltage requirements.
- ▶ Robust AirStop II Electric Remote Control Handles supplied standard.
- ▶ Low profile control cable connectors.
- ▶ Compliant to OSHA 1915:34(c)(1)(iv) deadman control requirements.
- ▶ Optional air blow down feature.
- ▶ Optional master control via pinch control valves.

Common Applications

- ▶ Shipyard / Marine applications utilizing multi-outlet pressure blast pots.
- ▶ Oil & Gas maintenance / shut down projects.
- ▶ Multi-operator Blast Room facilities.



All data and information subject to change without prior notice. Brochure reference CAT-0303-04-00

Component Highlights



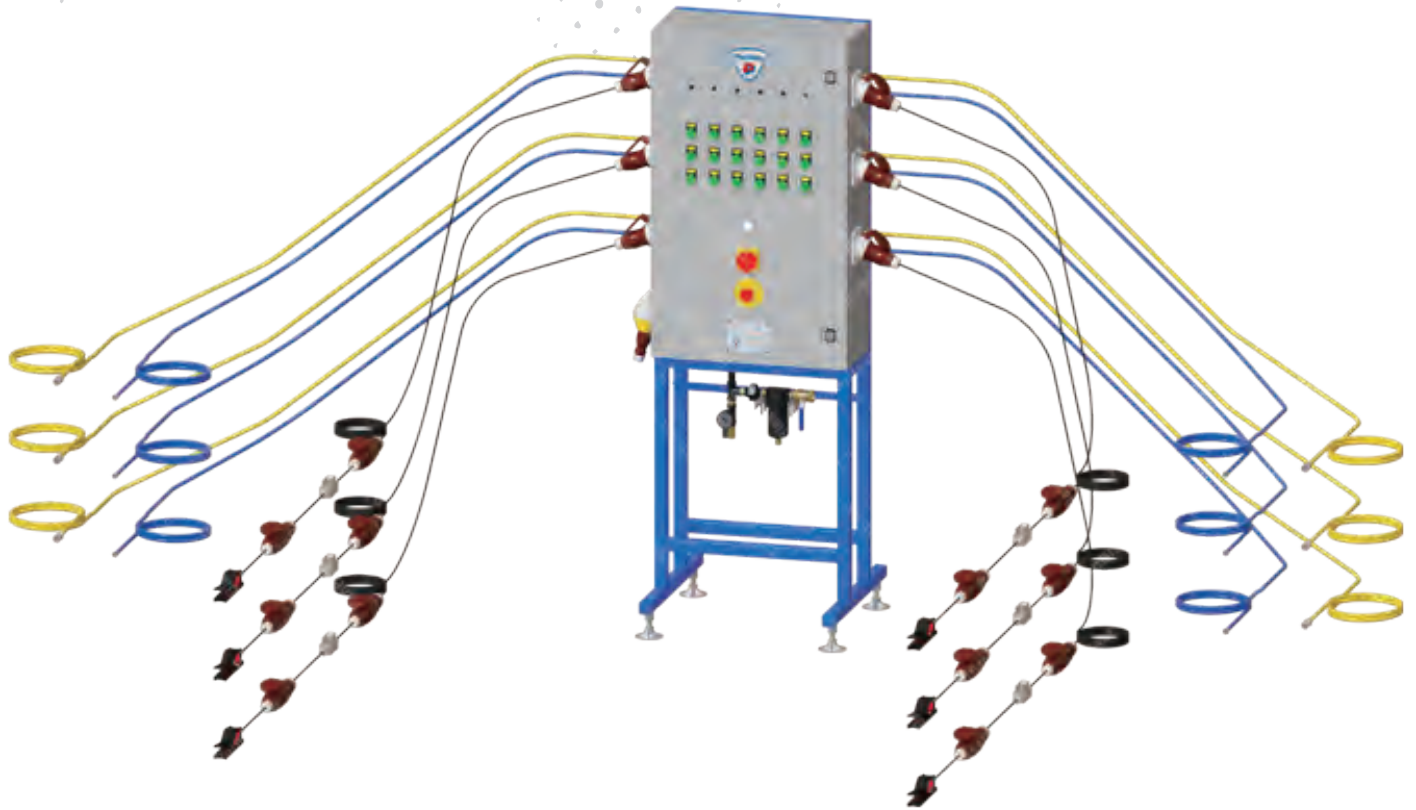
- | | | |
|--|---|--|
| 1 Control Hose to Control Valves | 4 Available 1 to 6 Operators Configurations | 7 40 m (133') Standard Length Remote Cables (Optional Lengths Available) |
| 2 IP44 Rated Mains Controller Housing & Connectors | 5 Quick Fit Male - Female Adaptor Connections | 8 Sturdy Floor / Transportation Frame (Optional) |
| 3 Various Input & Control Voltages Available | 6 Pneumatic Quick Disconnects | 9 Safety AirStop II Electric Remote Control Handles |

Assembly

Stock Code	Description	Weight
BAC-RC-0595-00	ERC6-1 Electric Remote System with Stand	43 kg (94.8 lbs)



ERC6-2 Electric Remote Sys With Airblow



Complementary Products



Blast Pots



Corsa II Valve



Titan II SAR



Blast Hoses



Kombi II Remote Valve



Tandem Inlet Valve



QuikStop IIS Electric Handle



AirStop II Electric Handle



Product Features

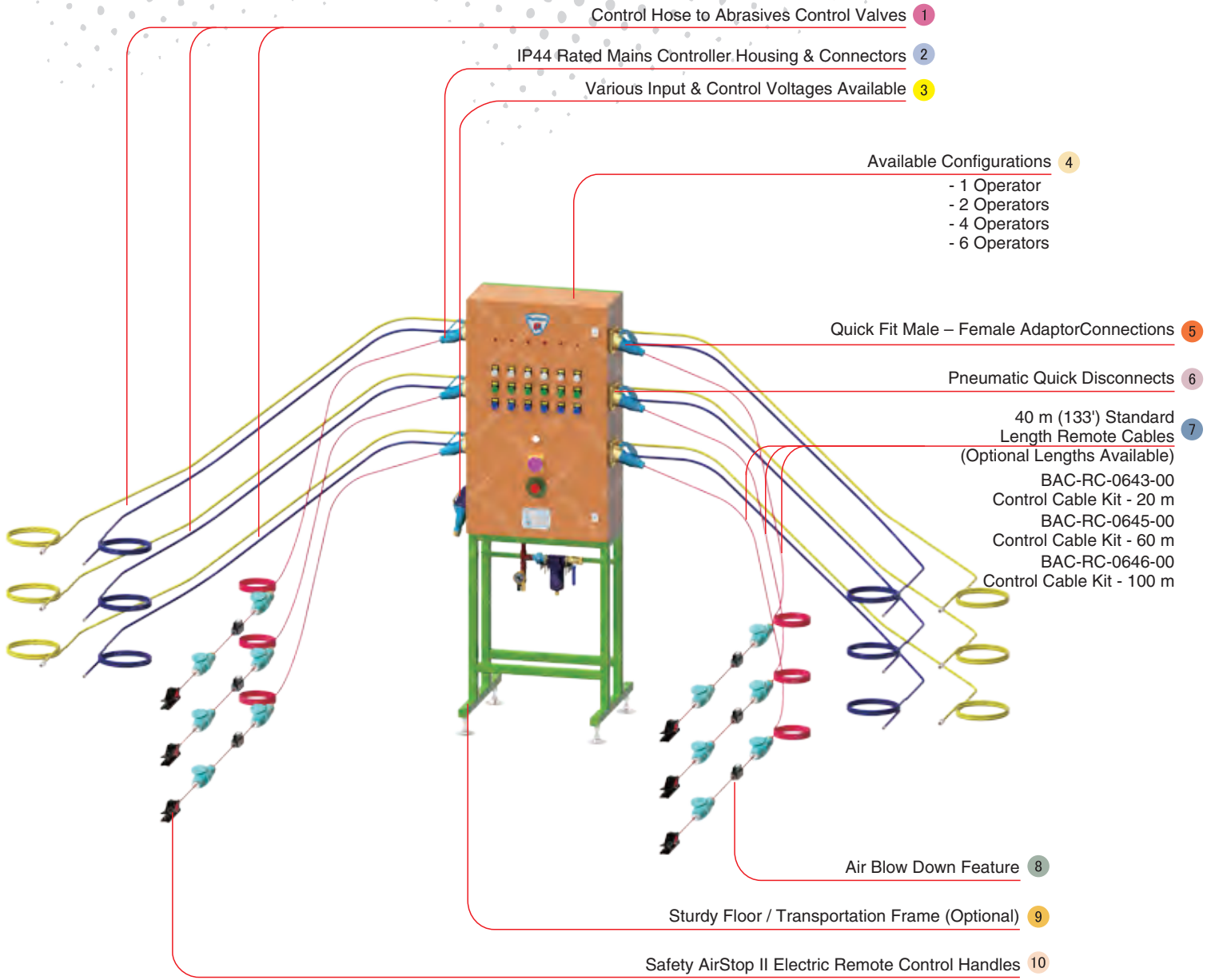
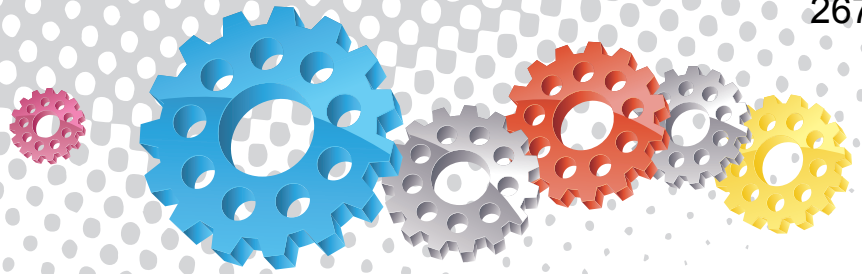
The PanBlast™ 6 Man Electric Remote System with Stand is an integrated system featuring a weatherproof enclosure, switches, cabling and connectors with low voltage, abrasive resistant control lines for independent activation and de-activation of blasting for up to six blasting operators, and is supplied standard with 40 meter (132 ft) control lines with optional 20 meter (66 ft) to 60 meter (198 ft) extension control lines.

- ▶ Available to suit most site voltage requirements.
- ▶ Robust AirStop II Electric Remote Control Handles supplied standard.
- ▶ Low profile control cable connectors.
- ▶ Compliant to OSHA 1915:34(c)(1)(iv) deadman control requirements.
- ▶ Air blow down feature.

▶ Optional master control via pinch control valves.

Common Applications

- ▶ Shipyard / Marine applications utilizing multi-outlet pressure blast pots.
- ▶ Oil & Gas maintenance / shut down projects.
- ▶ Multi-operator Blast Room facilities.



All data and information subject to change without prior notice. Brochure reference CAT-0303-06-00

Component Highlights



- 1 Control Hose to Abrasives Control Valves
- 2 IP44 Rated Mains Controller Housing & Connectors
- 3 Various Input & Control Voltages Available
- 4 Available 1 to 6 Operators Configurations
- 5 Quick Fit Male – Female Adaptor Connections
- 6 Pneumatic Quick Disconnects
- 7 40 m (133') Standard Length Remote Cables (Optional Lengths Available)
- 8 Air blow down feature
- 9 Sturdy Floor / Transportation Frame (Optional)
- 10 Safety AirStop II Electric Remote Control Handles

Assembly

Stock Code	Description	Weight
BAC-RC-0602-00	ERC6-2 Electric Remote Sys With Airblow	47 kg (103.6 lbs)



Electric Remote Conversion Kits



Product Features

The PanBlast™ Electric Remote Conversion Kit includes all components and fittings necessary to convert pneumatic blast pot remote control systems to electrically actuated systems.

- ▶ PanBlast™ AirStop II Electric Remote Control Handle.
- ▶ Cable couplings.
- ▶ Control valve solenoids.
- ▶ 12V or 24V supply.
- ▶ Other voltages available on request.

Common Applications

- ▶ Long-blasting hose applications.
- ▶ Conversion of slow pneumatic remote control systems.

Complementary Products



Automatic Blast Pots



QuikStop IIS Electric Handle



AirFlo Electric Handle



AirStop Electric Handle



UniFlo Remote Valve



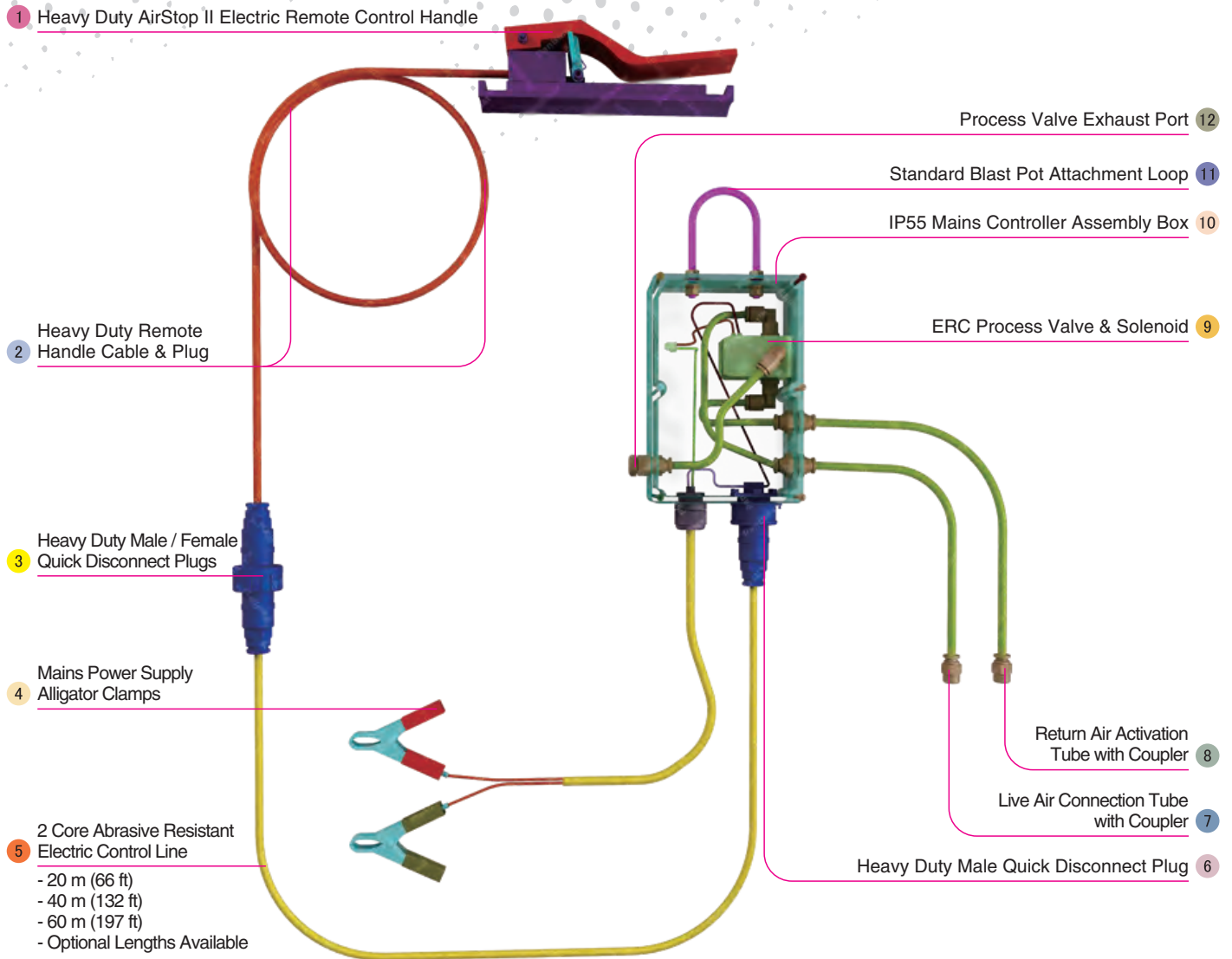
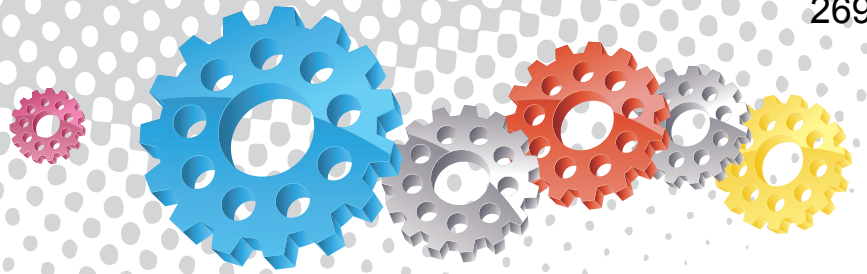
Corsa II Valve



Kombi II Remote Valve



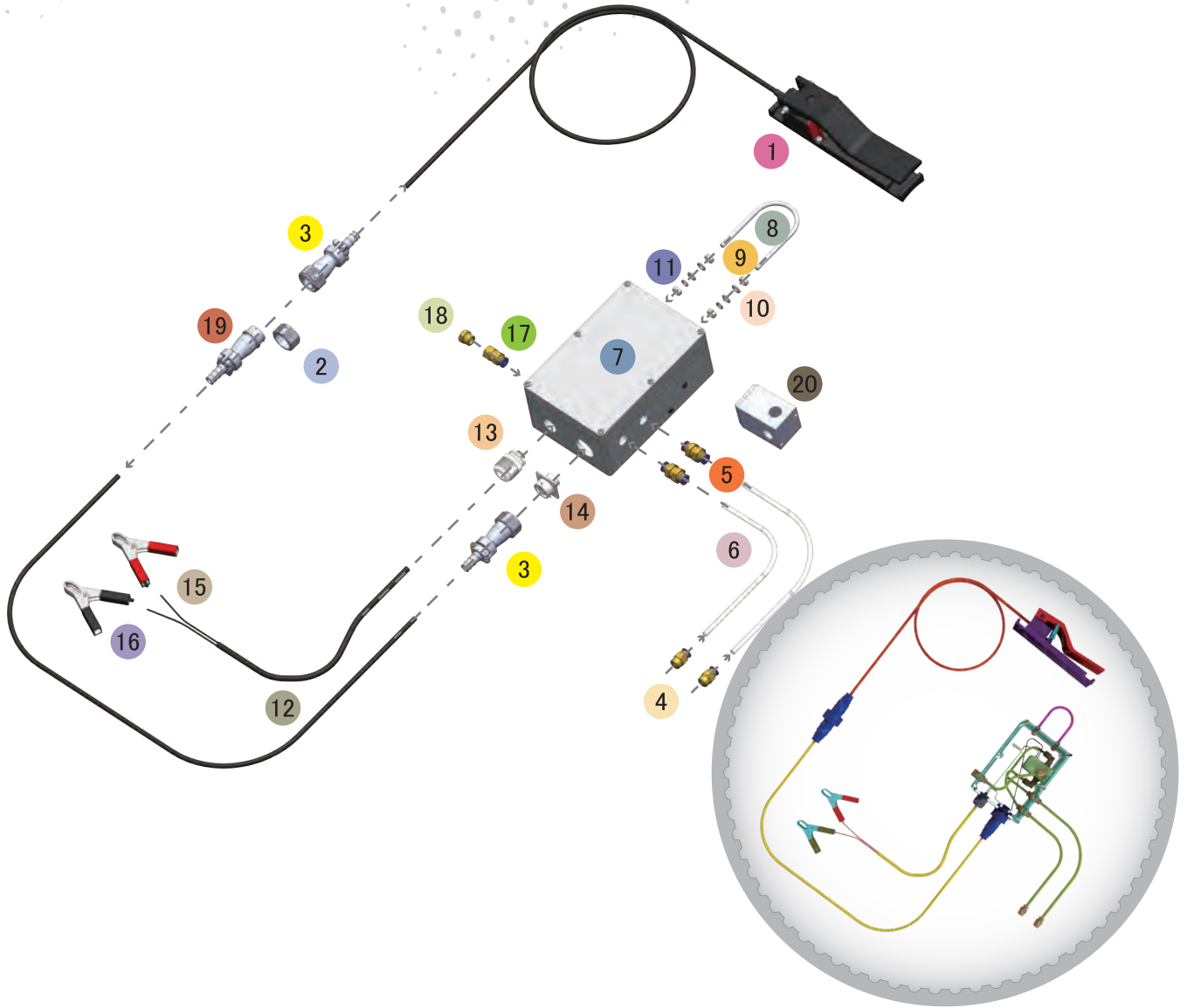
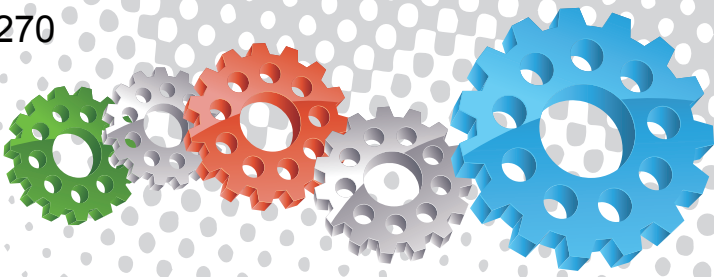
Tandem Inlet Valve



Component Highlights



- | | | |
|--|---|---------------------------------------|
| 1 Heavy Duty AirStop II Electric Remote Control Handle | 5 2 Core Abrasive Resistant Electric Control Line | 9 ERC Process Valve & Solenoid |
| 2 Heavy Duty Remote Handle Cable & Plug | 6 Heavy Duty Male Quick Disconnect Plug | 10 IP55 Mains Controller Assembly Box |
| 3 Heavy Duty Male / Female Quick Disconnect Plugs | 7 Live Air Connection Tube with Coupler | 11 Standard Blast Pot Attachment Loop |
| 4 Mains Power Supply Alligator Clamps | 8 Return Air Activation Tube with Coupler | 12 Process Valve Exhaust Port |



Assemblies

Stock Code	Description	Weight
BAC-RC-0118-02	Electric Remote Conversion Kit-20 m	6.0 kg (13.2 lbs)
BAC-RC-0025-02	Electric Remote Conversion Kit-40 m	6.5 kg (14.3 lbs)
BAC-RC-0600-01	Electric Remote Conversion Kit-60 m	7.0 kg (15.4 lbs)

Service Kits

Stock Code	Description	Include Items
BAC-RC-0637-00	Control Handle Kit	1 3
BAC-RC-0639-00	Control Cable Kit 20 m	2 3 12 x20 m 19
BAC-RC-0638-00	Control Cable Kit 40 m	2 3 12 x40 m 19
BAC-RC-0640-00	Control Cable Kit 60 m	2 3 12 x60 m 19



Parts List



Description	Qty	Description	Qty	Description	Qty
1 AirStop II Electric Control Handle	1	8 U-Bolt	1	15 Alligator Clip (Red)	1
2 Receptacle Cover	1	9 M6 Nut	4	16 Alligator Clip (Black)	1
3 Cable Quick Connector - Male	2	10 Flat Washer	4	17 1/4" F Tube Bulkhead Connector	1
4 1/4" Tube Connector	2	11 Spring Washer	2	18 1/4" Brass Filter	1
5 Tube Fitting	2	12 Two Core Cable	20/40/60 m	19 Cable Quick Connector - Female	1
6 Nylon Tubing	2.5 m	13 M20 Cable Gland	1	20 12VDC Solenoid Valve	1
7 Alum Box IP65-180x120x80mm	1	14 Receptacle Socket	1		

Архангельск (8182)63-90-72
Астана (7172)727-132
Астрахань (8512)99-46-04
Барнаул (3852)73-04-60
Белгород (4722)40-23-64
Брянск (4832)59-03-52
Владивосток (423)249-28-31
Волгоград (844)278-03-48
Вологда (8172)26-41-59
Воронеж (473)204-51-73
Екатеринбург (343)384-55-89
Иваново (4932)77-34-06

Ижевск (3412)26-03-58
Иркутск (395)279-98-46
Казань (843)206-01-48
Калининград (4012)72-03-81
Калуга (4842)92-23-67
Кемерово (3842)65-04-62
Киров (8332)68-02-04
Краснодар (861)203-40-90
Красноярск (391)204-63-61
Курск (4712)77-13-04
Липецк (4742)52-20-81

Киргизия (996)312-96-26-47

Магнитогорск (3519)55-03-13
Москва (495)268-04-70
Мурманск (8152)59-64-93
Набережные Челны (8552)20-53-41
Нижний Новгород (831)429-08-12
Новокузнецк (3843)20-46-81
Новосибирск (383)227-86-73
Омск (3812)21-46-40
Орел (4862)44-53-42
Оренбург (3532)37-68-04
Пенза (8412)22-31-16

Россия (495)268-04-70

Пермь (342)205-81-47
Ростов-на-Дону (863)308-18-15
Рязань (4912)46-61-64
Самара (846)206-03-16
Санкт-Петербург (812)309-46-40
Саратов (845)249-38-78
Севастополь (8692)22-31-93
Симферополь (3652)67-13-56
Смоленск (4812)29-41-54
Сочи (862)225-72-31
Ставрополь (8652)20-65-13

Казахстан (772)734-952-31

Сургут (3462)77-98-35
Тверь (4822)63-31-35
Томск (3822)98-41-53
Тула (4872)74-02-29
Тюмень (3452)66-21-18
Ульяновск (8422)24-23-59
Уфа (347)229-48-12
Хабаровск (4212)92-98-04
Челябинск (351)202-03-61
Череповец (8202)49-02-64
Ярославль (4852)69-52-93

www.panblast.nt-rt.ru | | pav@nt-rt.ru