

Архангельск (8182)63-90-72
Астана (7172)727-132
Астрахань (8512)99-46-04
Барнаул (3852)73-04-60
Белгород (4722)40-23-64
Брянск (4832)59-03-52
Владивосток (423)249-28-31
Волгоград (844)278-03-48
Вологда (8172)26-41-59
Воронеж (473)204-51-73
Екатеринбург (343)384-55-89
Иваново (4932)77-34-06

Ижевск (3412)26-03-58
Иркутск (395)279-98-46
Казань (843)206-01-48
Калининград (4012)72-03-81
Калуга (4842)92-23-67
Кемерово (3842)65-04-62
Киров (8332)68-02-04
Краснодар (861)203-40-90
Красноярск (391)204-63-61
Курск (4712)77-13-04
Липецк (4742)52-20-81

Киргизия (996)312-96-26-47

Магнитогорск (3519)55-03-13
Москва (495)268-04-70
Мурманск (8152)59-64-93
Набережные Челны (8552)20-53-41
Нижний Новгород (831)429-08-12
Новокузнецк (3843)20-46-81
Новосибирск (383)227-86-73
Омск (3812)21-46-40
Орел (4862)44-53-42
Оренбург (3532)37-68-04
Пенза (8412)22-31-16

Россия (495)268-04-70

Пермь (342)205-81-47
Ростов-на-Дону (863)308-18-15
Рязань (4912)46-61-64
Самара (846)206-03-16
Санкт-Петербург (812)309-46-40
Саратов (845)249-38-78
Севастополь (8692)22-31-93
Симферополь (3652)67-13-56
Смоленск (4812)29-41-54
Сочи (862)225-72-31
Ставрополь (8652)20-65-13

Казахстан (772)734-952-31

Сургут (3462)77-98-35
Тверь (4822)63-31-35
Томск (3822)98-41-53
Тула (4872)74-02-29
Тюмень (3452)66-21-18
Ульяновск (8422)24-23-59
Уфа (347)229-48-12
Хабаровск (4212)92-98-04
Челябинск (351)202-03-61
Череповец (8202)49-02-64
Ярославль (4852)69-52-93

www.panblast.nt-rt.ru | | pav@nt-rt.ru

Технические характеристики на принадлежности для пескоструйных камер компании **PanBlast**

Виды товаров: компоненты камер, выпускные глушители, вентиляционные клапаны, выдвижные клапаны, седельные кольца клапана, посадочные кольца, манометры, клапаны, обратные клапаны, шаровые клапаны, сетки, крышки.



Blast Pot Accessories



Blast Pot Accessories



Exhaust Muffler



Relief Valves



Non Return Valves



Pressure Gauge Base Mount



Pressure Gauge Rear Mount



Ball Valves



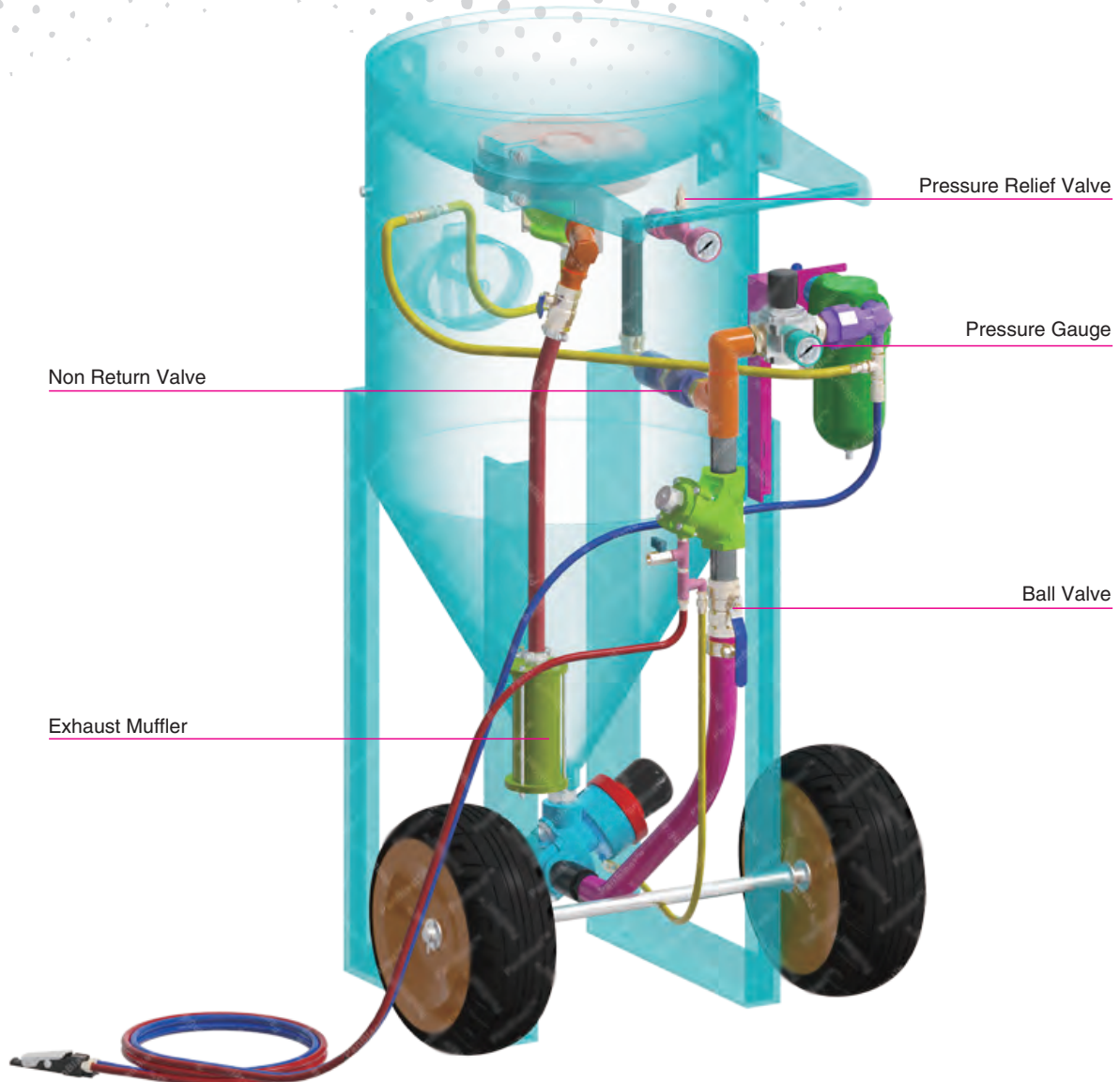
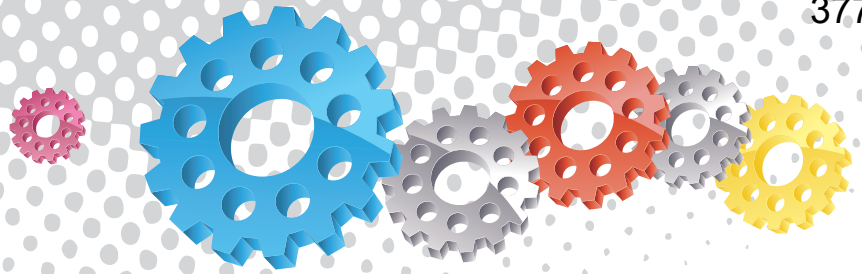
Product Features

Panblast supplies a complete range of blast pot accessory items to suit most sizes and types of blast pots. Most accessories are available to fit both PanBlast™ and OEM blast pots.

- ▶ Exhaust mufflers.
- ▶ Ball valves.
- ▶ Non-return valves.
- ▶ Pressure gauges.
- ▶ Pressure relief valves.

Common Applications

- ▶ PanBlast™ blast pot upgrades and parts replacement.
- ▶ OEM blast pot upgrades and parts replacement.



All data and information subject to change without prior notice. Brochure reference CAT-0403-01-00

Component Highlights



Stock Code	Description	Weight	Stock Code	Description	Weight
BAC-PF-PB-0028	6 mm (1/4") Ball Valve	0.08 kg (0.18 lbs)	BAC-PF-PB-0030	6 mm (1/4")-125 PSI Pressure Relief Valve	0.04 kg (0.08 lbs)
BAC-PF-PB-0021	10 mm (3/8") Ball Valve	0.13 kg (0.29 lbs)	BAC-PF-PB-0240	13 mm(1/2")-150 PSI Pressure Relief Valve	0.16 kg (0.35 lbs)
BAC-PF-PB-0001	13 mm (1/2") Ball Valve	0.14 kg (0.30 lbs)	BAC-RC-PB-0022	Exhaust Muffler	0.96 kg (2.11 lbs)
BAC-PF-PB-0004	19 mm (3/4") Ball Valve	0.22 kg (0.49 lbs)	BAC-PF-PB-0002	13 mm (1/2") Non Return Valve	0.10 kg (0.22 lbs)
BAC-PF-PB-0003	25 mm (1") Ball Valve	0.34 kg (0.75 lbs)	BAC-PF-PB-0005	19 mm (3/4") Non Return Valve	0.20 kg (0.44 lbs)
BAC-PF-PB-0006	32 mm (1-1/4") Ball Valve	0.57 kg (1.26 lbs)	BAC-PF-PB-0107	25 mm (1") Non Return Valve	0.26 kg (0.57 lbs)
BAC-PF-PB-0008	38 mm (1-1/2") Ball Valve	0.79 kg (1.74 lbs)	BAC-PF-PB-0007	32 mm (1-1/4") Non Return Valve	0.40 kg (0.88 lbs)
BAC-PF-PB-0031	6 mm (1/4") Pressure Gauge-Rear Entry	0.06 kg (0.13 lbs)	BAC-PF-0274-00	1/2" BSP - 125 PSI Pressure Relief Valve	0.14 kg (0.31 lbs)
BAC-PF-PB-0032	6 mm (1/4") Pressure Gauge-Base Entry	0.08 kg (0.18 lbs)	BAC-PF-PB-0226	1/4" BSP - 150 PSI Pressure Relief Valve	0.04 kg (0.08 lbs)



Pop Up Valves and Seating Rings



Product Features

PanBlast™ Pop Up Valves and Seating Rings are available to suit most OEM blast pots currently on the market.

- ▶ Both stem and sleeve type available.
- ▶ Smaller sizes available for lower capacity blast pots.
- ▶ Rubber mushroom heads for improved sealing and service life.

Common Applications

- ▶ Pop up valve replacement for PanBlast™ Blast pots.
- ▶ Pop up valve replacement for OEM blast pots.

Complementary Products



Blast Pots



Moisture Separator



Sola 30 Inlet Valve



Tandem Inlet Valve



Fina II Valve



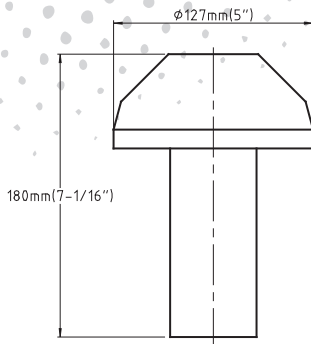
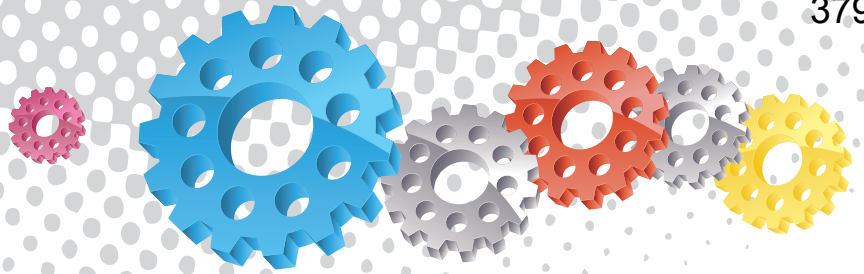
Corsa II Valve



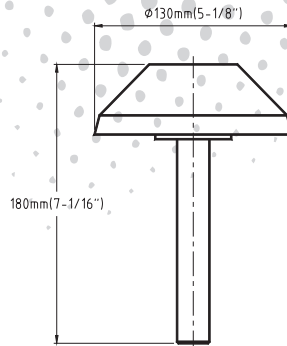
Kombi II Remote Valve



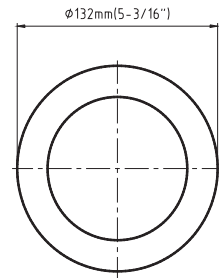
Screens & Lids



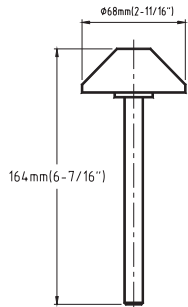
BAC-BF-PB-0011



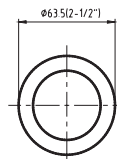
BAC-BF-PB-0012



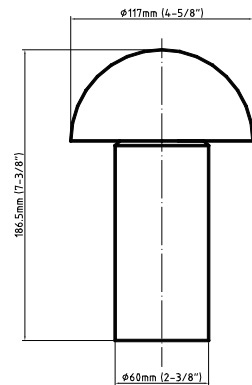
BAC-BF-PB-0013



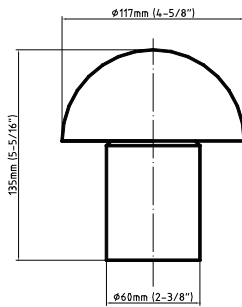
BAC-BF-PB-0003



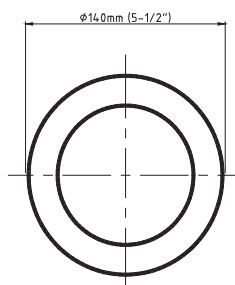
BAC-BF-PB-0004



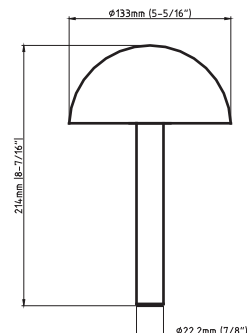
BAC-BF-PB-0137



BAC-BF-PB-0138



YAC-BF-0268-00



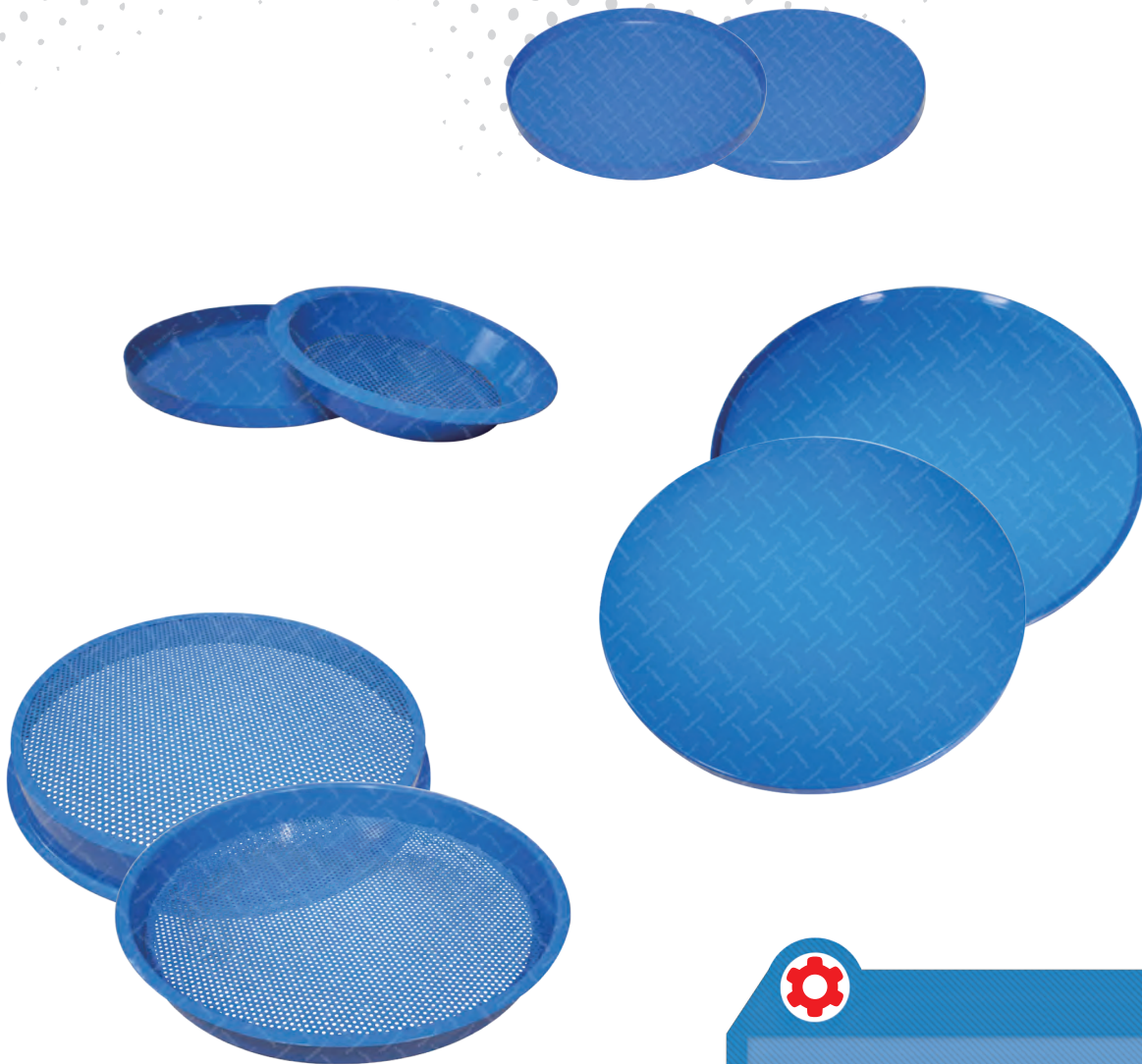
YAC-BF-0269-00

PanBlast™ Pop Up Valves and Seating Rings

Stock Code	Description	Weight
BAC-BF-PB-0011	Pop up Valve - Sleeve Type	1.50 kg (3.31 lbs)
BAC-BF-PB-0012	Pop up Valve - Stem Type	1.70 kg (3.75 lbs)
BAC-BF-PB-0013	Pop up Valve Seating Ring	0.18 kg (0.40 lbs)
BAC-BF-PB-0003	Junior Pop Up Valve	0.27 kg (0.60 lbs)
BAC-BF-PB-0004	Junior Seating Ring	0.05 kg (0.11 lbs)
BAC-BF-PB-0137	P&G Pop Up Valve	1.15 kg (2.53 lbs)
BAC-BF-PB-0138	P&G High Volume Pop Up Valve	1.26 kg (2.77 lbs)
YAC-BF-0268-00	P/U Dome Pop Up Valve - Seating Ring	0.18 kg (0.40 lbs)
YAC-BF-0269-00	P/U Dome Pop Up Valve	1.20 kg (2.64 lbs)



Blast Pot Lids and Screens



Product Features

Blast pot lids and screens are available as optional items on all PanBlast™ BP Series Blast Pots. Screens are recessed within the top of the blast pot to filter out coarse debris in the abrasive. Lids are placed over the top of the pot shell to prevent foreign objects and moisture from entering. These accessories will assist to prevent blast hose and valve clogging, and reduce the risk of excessive equipment wear.

- ▶ Simple installation and removal.
- ▶ Protection of valuable equipment.
- ▶ Reduction of downtime.

Common Applications

- ▶ Abrasive recycling applications.
- ▶ On site and yard blasting operations where moisture and debris are present.

Complementary Products



Blast Pots



Blast Hoses



Nylon Nozzle Holders



Nylon Couplings



Aluminum Nozzle Holders



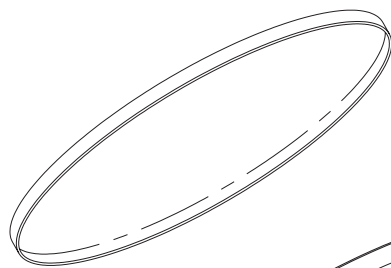
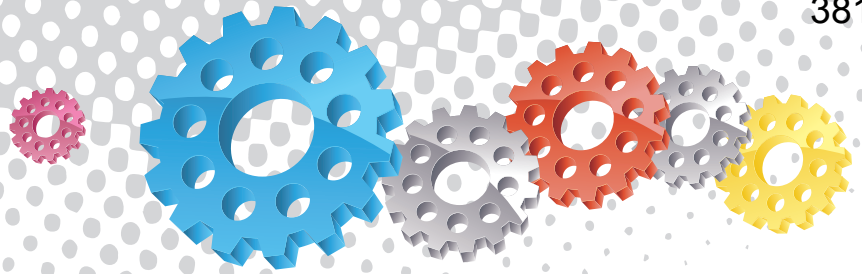
Steel Couplings



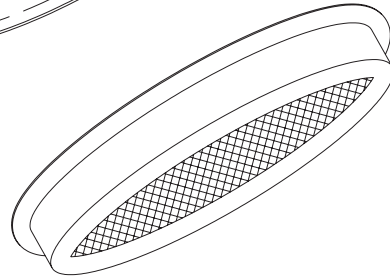
Pop Up Valves



Moisture Separator



BLAST POT LID



BLAST POT SCREEN

PanBlast™ Blast Pot Screens

Stock Code	Description	Blast Pot To Suit
BAC-BF-PB-0027	610 mm (24") Φ Screen	BP600, BP800, SB600, MB600, CB800
BAC-BF-PB-0028	510 mm (20") Φ Screen	BP300, MB300
BAC-BF-PB-0029	410 mm (16") Φ Screen	BP316, SB316
BAC-BF-PB-0031	305 mm (12") Φ Screen	BP110
BAC-BF-PB-0032	250 mm (10") Φ Screen	BP50

PanBlast™ Blast Pot Lids

Stock Code	Description	Blast Pot To Suit
BAC-BF-PB-0033	610 mm (24") Φ Lid	BP600, BP800, SB600, MB600, CB800
BAC-BF-PB-0034	510 mm (20") Φ Lid	BP300, MB300
BAC-BF-PB-0035	410 mm (16") Φ Lid	BP316, SB316
BAC-BF-PB-0037	305 mm (12") Φ Lid	BP110
BAC-BF-PB-0038	250 mm (10") Φ Lid	BP50

Архангельск (8182)63-90-72
Астана (7172)727-132
Астрахань (8512)99-46-04
Барнаул (3852)73-04-60
Белгород (4722)40-23-64
Брянск (4832)59-03-52
Владивосток (423)249-28-31
Волгоград (844)278-03-48
Вологда (8172)26-41-59
Воронеж (473)204-51-73
Екатеринбург (343)384-55-89
Иваново (4932)77-34-06

Ижевск (3412)26-03-58
Иркутск (395)279-98-46
Казань (843)206-01-48
Калининград (4012)72-03-81
Калуга (4842)92-23-67
Кемерово (3842)65-04-62
Киров (8332)68-02-04
Краснодар (861)203-40-90
Красноярск (391)204-63-61
Курск (4712)77-13-04
Липецк (4742)52-20-81

Киргизия (996)312-96-26-47

Магнитогорск (3519)55-03-13
Москва (495)268-04-70
Мурманск (8152)59-64-93
Набережные Челны (8552)20-53-41
Нижний Новгород (831)429-08-12
Новокузнецк (3843)20-46-81
Новосибирск (383)227-86-73
Омск (3812)21-46-40
Орел (4862)44-53-42
Оренбург (3532)37-68-04
Пенза (8412)22-31-16

Россия (495)268-04-70

Пермь (342)205-81-47
Ростов-на-Дону (863)308-18-15
Рязань (4912)46-61-64
Самара (846)206-03-16
Санкт-Петербург (812)309-46-40
Саратов (845)249-38-78
Севастополь (8692)22-31-93
Симферополь (3652)67-13-56
Смоленск (4812)29-41-54
Сочи (862)225-72-31
Ставрополь (8652)20-65-13

Казахстан (772)734-952-31

Сургут (3462)77-98-35
Тверь (4822)63-31-35
Томск (3822)98-41-53
Тула (4872)74-02-29
Тюмень (3452)66-21-18
Ульяновск (8422)24-23-59
Уфа (347)229-48-12
Хабаровск (4212)92-98-04
Челябинск (351)202-03-61
Череповец (8202)49-02-64
Ярославль (4852)69-52-93

www.panblast.nt-rt.ru | | pav@nt-rt.ru