

Архангельск (8182)63-90-72  
Астана (7172)727-132  
Астрахань (8512)99-46-04  
Барнаул (3852)73-04-60  
Белгород (4722)40-23-64  
Брянск (4832)59-03-52  
Владивосток (423)249-28-31  
Волгоград (844)278-03-48  
Вологда (8172)26-41-59  
Воронеж (473)204-51-73  
Екатеринбург (343)384-55-89  
Иваново (4932)77-34-06

Ижевск (3412)26-03-58  
Иркутск (395)279-98-46  
Казань (843)206-01-48  
Калининград (4012)72-03-81  
Калуга (4842)92-23-67  
Кемерово (3842)65-04-62  
Киров (8332)68-02-04  
Краснодар (861)203-40-90  
Красноярск (391)204-63-61  
Курск (4712)77-13-04  
Липецк (4742)52-20-81

Киргизия (996)312-96-26-47

Магнитогорск (3519)55-03-13  
Москва (495)268-04-70  
Мурманск (8152)59-64-93  
Набережные Челны (8552)20-53-41  
Нижний Новгород (831)429-08-12  
Новокузнецк (3843)20-46-81  
Новосибирск (383)227-86-73  
Омск (3812)21-46-40  
Орел (4862)44-53-42  
Оренбург (3532)37-68-04  
Пенза (8412)22-31-16

Россия (495)268-04-70

Пермь (342)205-81-47  
Ростов-на-Дону (863)308-18-15  
Рязань (4912)46-61-64  
Самара (846)206-03-16  
Санкт-Петербург (812)309-46-40  
Саратов (845)249-38-78  
Севастополь (8692)22-31-93  
Симферополь (3652)67-13-56  
Смоленск (4812)29-41-54  
Сочи (862)225-72-31  
Ставрополь (8652)20-65-13

Казахстан (772)734-952-31

Сургут (3462)77-98-35  
Тверь (4822)63-31-35  
Томск (3822)98-41-53  
Тула (4872)74-02-29  
Тюмень (3452)66-21-18  
Ульяновск (8422)24-23-59  
Уфа (347)229-48-12  
Хабаровск (4212)92-98-04  
Челябинск (351)202-03-61  
Череповец (8202)49-02-64  
Ярославль (4852)69-52-93

[www.panblast.nt-rt.ru](http://www.panblast.nt-rt.ru) | | [pav@nt-rt.ru](mailto:pav@nt-rt.ru)

# Технические характеристики на воздушные выпускные клапаны КОМПАНИИ **PanBlast**



# Sola 5 NPT Exhaust Valve



## Product Features

The PanBlast™ Sola 5 NPT Exhaust Valve is a diaphragm activated exhaust valve utilized depressurizing compressed air from small blast pots. The NPT configuration is compatible with most U.S. pressure blasting equipment.

- ▶ Fast, positive exhaust valve actuation.
- ▶ Anodized internal valve surfaces.
- ▶ Simple maintenance.
- ▶ Parts and service kits available.
- ▶ 13 mm (1/2") NPT threads.

## Common Applications

- ▶ Blast room, yard and on site operations.
- ▶ Remote control for low capacity blast pots.

## Complementary Products



Sola 5 NPT Inlet Valve



Tandem Inlet Valve



QuikStop IIS Pneumatic Handle



Sola 10 Inlet Valve



AirFlo Pneumatic Handle



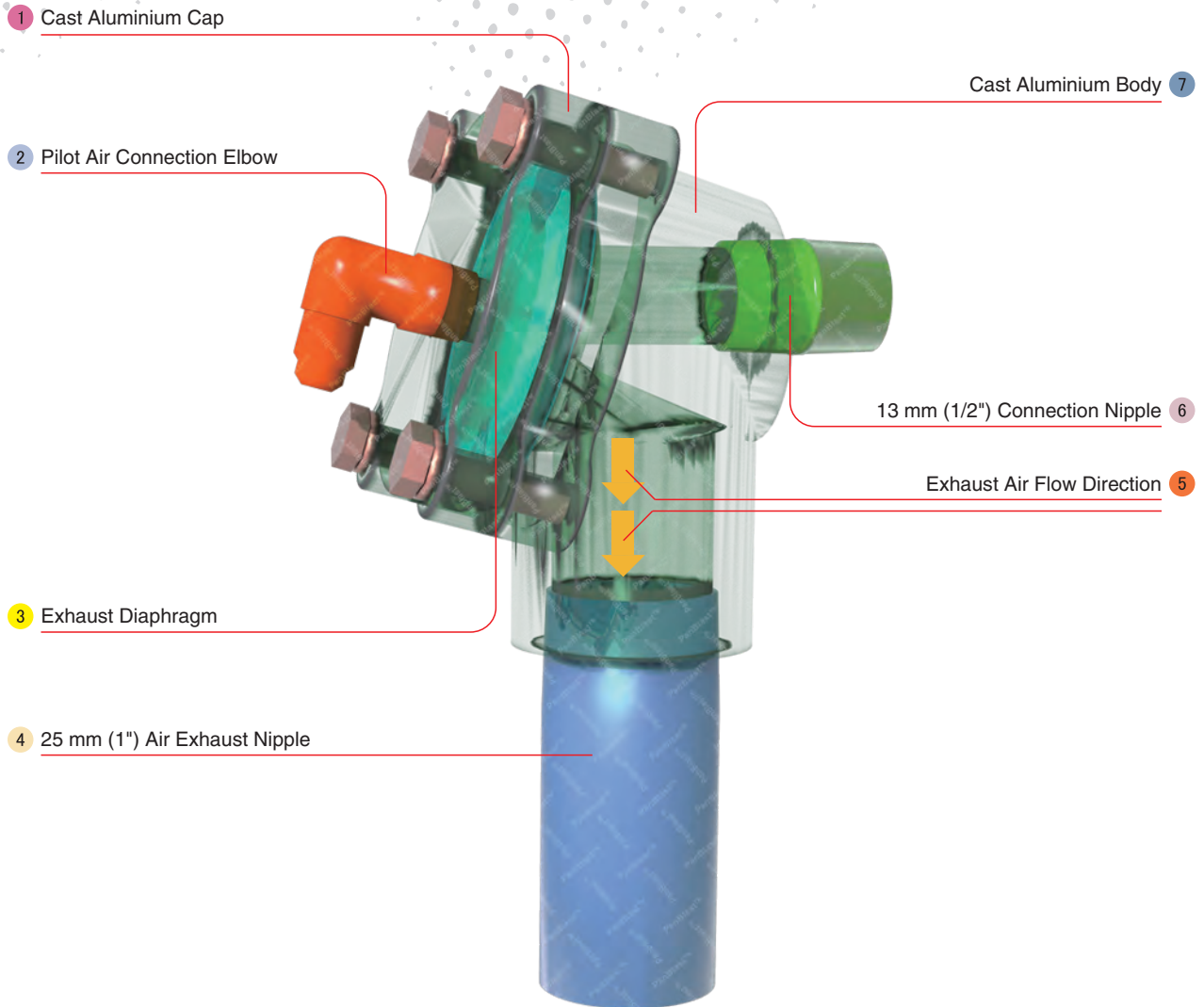
Sola 30 Inlet Valve



Twinline Hose



Exhaust Muffler



## Component Highlights



1 Die Cast Aluminium Cap

2 Pilot Air Connection Elbow

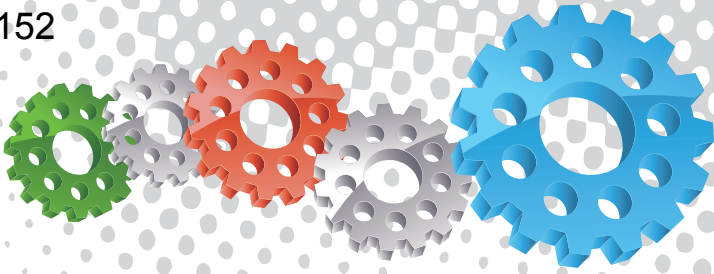
3 Exhaust Diaphragm

4 25 mm (1") Air Exhaust Nipple

5 Exhaust Air Flow Direction

6 13 mm (1/2") Connection Nipple

7 Die Cast Aluminium Body



## Assembly

Stock Code	Description	Weight
BAC-RC-PB-0018	Sola 5 NPT Exhaust Valve	0.76 kg(1.68 lbs)

## Service Kits

Stock Code	Description	Include Items
BAC-RC-PB-0102	Sola 5 Diaphragm Kit	5 X 3
BAC-RC-0490-00	Sola 5 Exhaust Valve Fittings Kit	1 6 8





## Parts List



Description	Qty	Description	Qty	Description	Qty
1 NPT/UNF Elbow	1	4 Diaphragm Cap	1	7 Diaphragm Body	1
2 Screw	4	5 Diaphragm	1	8 Barrel Nipple - NPT	1
3 Spring Washer	4	6 Toe Nipple - NPT	1		



## Helix 50 Outlet Valve Assembly



### Product Features

The PanBlast™ Helix 50 Outlet Valve Assembly is a diaphragm operated exhaust air control valve used to depressurize the blast pot. It is designed to be used in conjunction with the PanBlast™ Helix 100 BSP Inlet Control Valve or similar. The BSP configuration is compatible with most non-U.S. pressure blasting equipment.

- ▶ Fast, efficient operation.
- ▶ Anodized internal parts.
- ▶ Powder coated external parts.
- ▶ Parts interchangeable with OEM RMS/RCV style valves.
- ▶ 19 mm (3/4") BSP threads.

### Common Applications

- ▶ Blast pot control for blast room, yard or on site operations.
- ▶ OEM valve replacement.

## Complementary Products



Helix 100 Inlet Valve



Tandem Inlet Valve



Pop Up Valves



QuikStop IIS Pneumatic Handle



AirFlo Pneumatic Handle



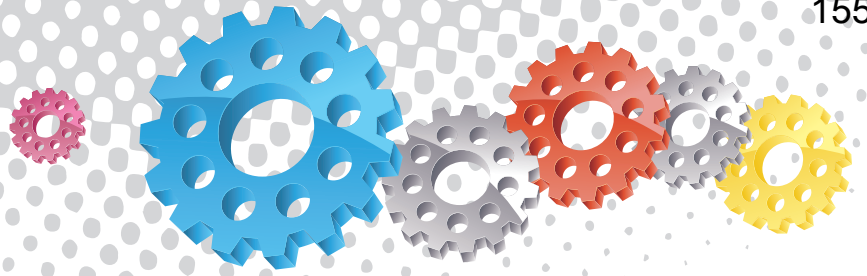
AirFlo Electric Handle



Twinline Hose



Exhaust Muffler



1 Exhaust Air Manifold

2 19 mm (3/4") Blast Pot Connection Port

3 Exhaust Diaphragm

4 Exhaust Valve Body

5 Cylinder Piston O-ring

6 End Cap Gasket

7 Quick Release End Cap

19 mm (3/4") Silencer Connection Port 14

Exhaust Air Manifold Seal 13

Die Cast Aluminium Construction 12

Exhaust Cylinder Piston 11

Activation Piston 10

Piston "U" Cup Seal 9

Pilot Air Activation Connector 8



## Component Highlights



1 Exhaust Air Manifold

2 19 mm (3/4") Blast Pot Connection Port

3 Exhaust Diaphragm

4 Exhaust Valve Body

5 Cylinder Piston O-ring

6 End Cap Gasket

7 Quick Release End Cap

8 Pilot Air Activation Connector

9 Piston "U" Cup Seal

10 Activation Piston

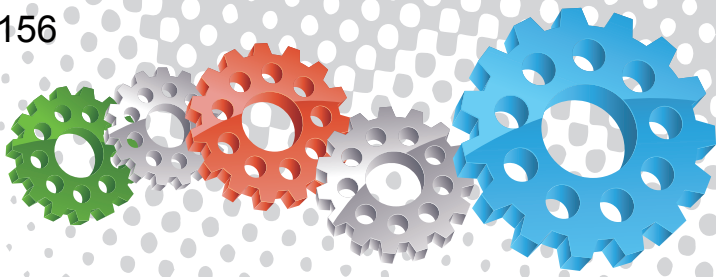
11 Exhaust Cylinder Piston

12 Die Cast Aluminium Construction

13 Exhaust Air Manifold Seal

14 19 mm (3/4") Silencer Connection Port





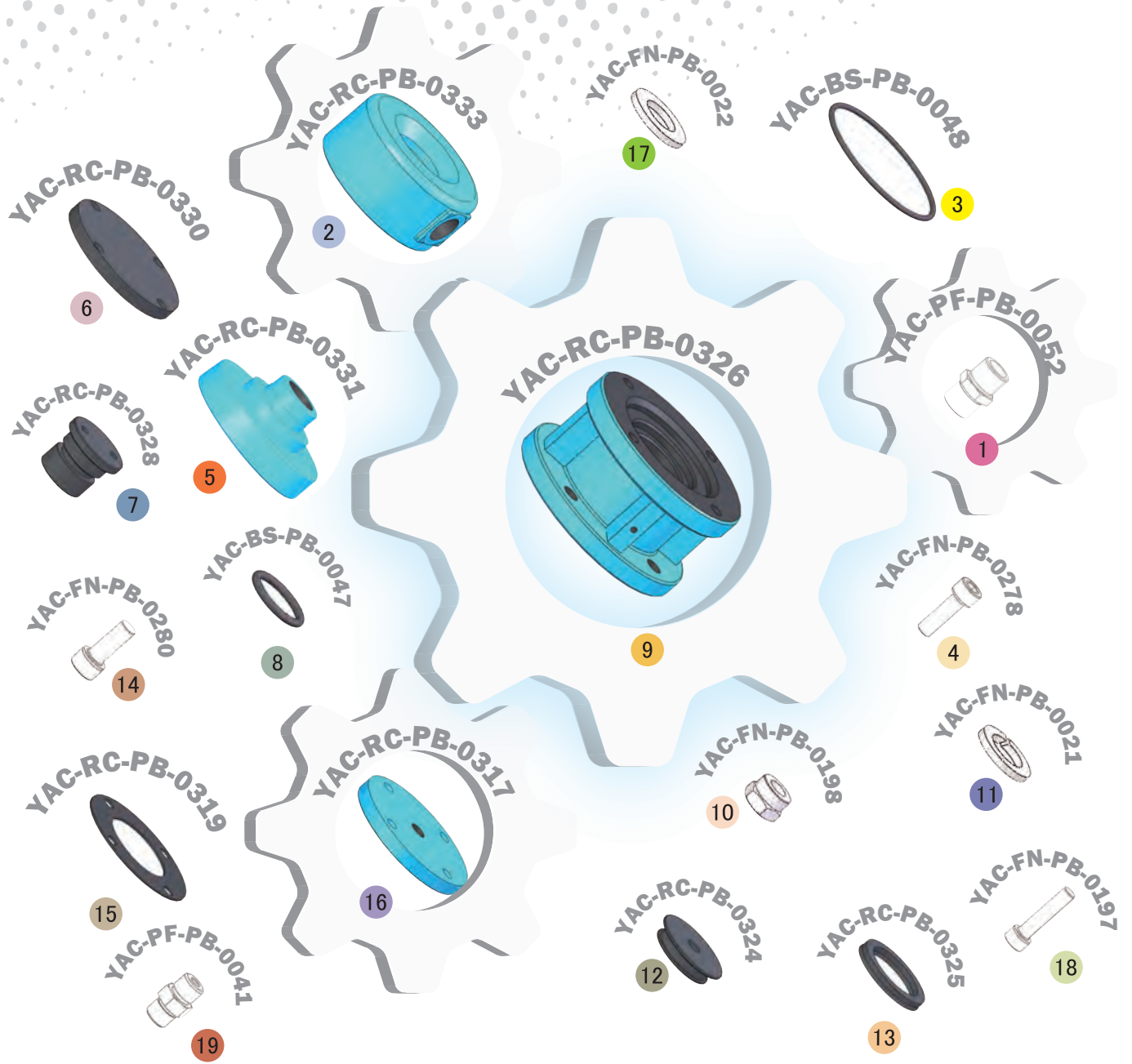
## Assembly

Stock Code	Description	Weight
BAC-RC-PB-0306	Helix 50 Outlet Valve Assembly	2.13 kg (4.69 lbs)

## Service Kits

Stock Code	Description	Include Items
YAC-RC-PB-0335	End Cap Kit	15 16 19
BAC-RC-0476-00	Helix 50 Valve Seal Kit	3 6 8 13 15





## Parts List



Description	Qty	Description	Qty	Description	Qty
1 Nipple	1	8 O-Ring	1	15 Cap Gasket	1
2 Exhaust Manifold	1	9 Exhaust Cylinder	1	16 Cylinder Housing Cap	1
3 O-Ring	1	10 M8 Lock Nut	4	17 Flat Washer	4
4 Screw	4	11 Spring Washer	4	18 Screw	4
5 Exhaust Base	1	12 Piston	1	19 Nipple	1
6 Diaphragm	1	13 Piston U-Seal	1		
7 Outlet Piston	1	14 Screw	1		



# Helix 50 NPT Outlet Valve Assembly



## Product Features

The PanBlast™ Helix 50 NPT Exhaust Control Valve is a diaphragm operated exhaust air control valve used to depressurize the blast pot. It is designed to be used in conjunction with the PanBlast™ Helix 100 NPT Inlet Control Valve or similar. The NPT configuration is compatible with most U.S. pressure blasting equipment.

- ▶ Fast, efficient operation.
- ▶ Anodized internal parts.
- ▶ Powder coated external parts.
- ▶ Parts interchangeable with OEM RMS/RCV style valves.
- ▶ 19 mm (3/4") NPT threads.

## Common Applications

- ▶ Blast pot control for blast room, yard or on site operations.
- ▶ OEM valve replacement.

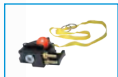
## Complementary Products



Helix 100 NPT Inlet Valve



Tandem Inlet Valve



QuikStop IIS Pneumatic Handle



Pop Up Valves



AirFlo Pneumatic Handle



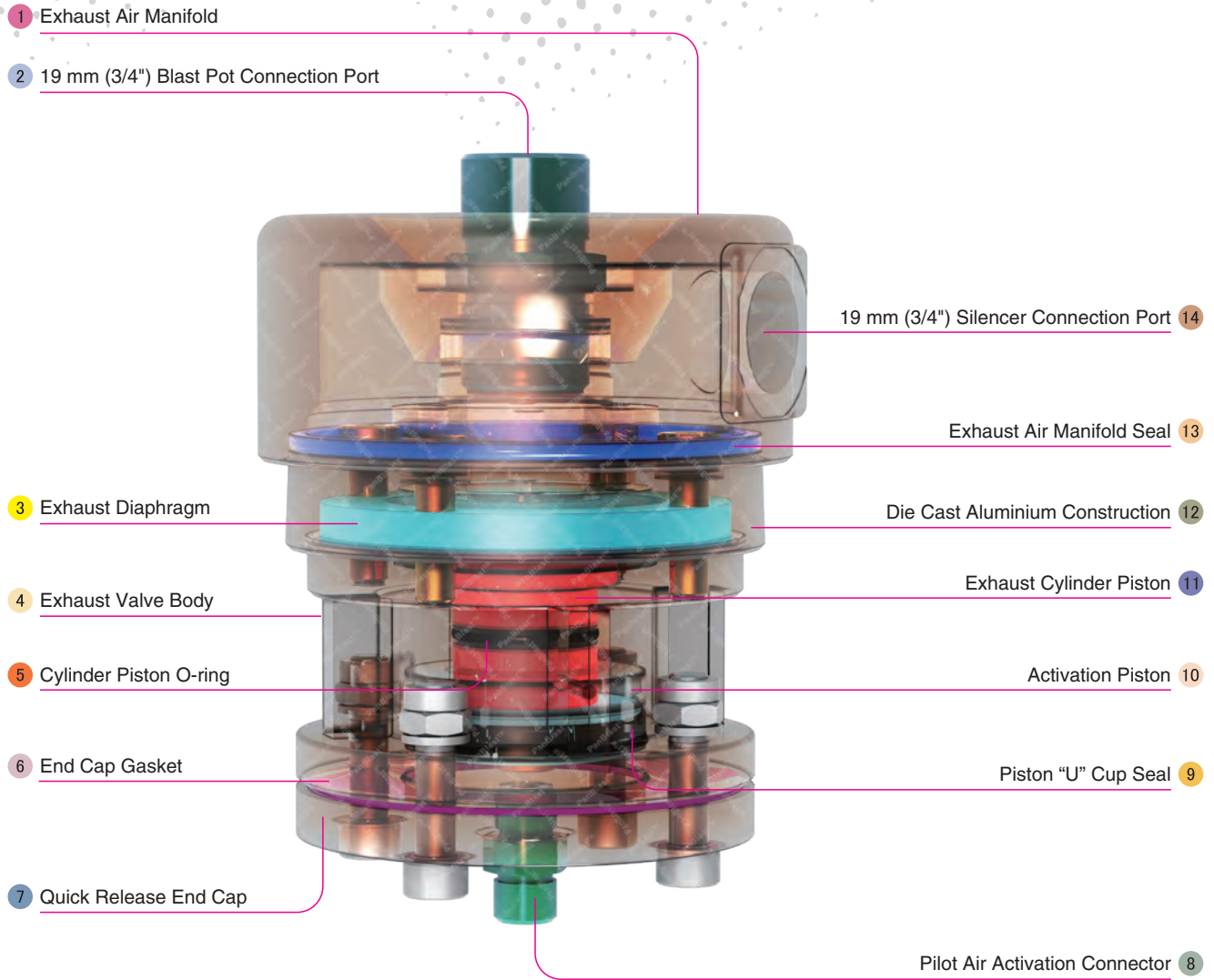
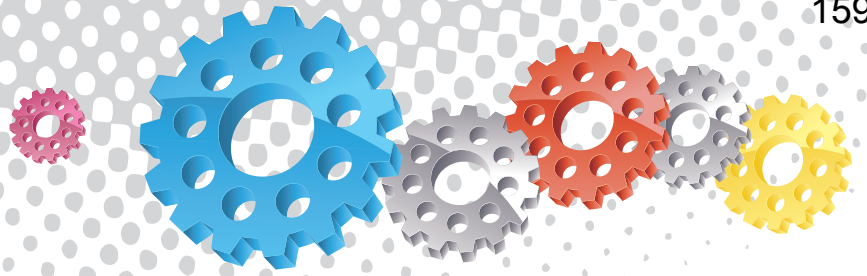
AirFlo Electric Handle



Twinline Hose



Exhaust Muffler

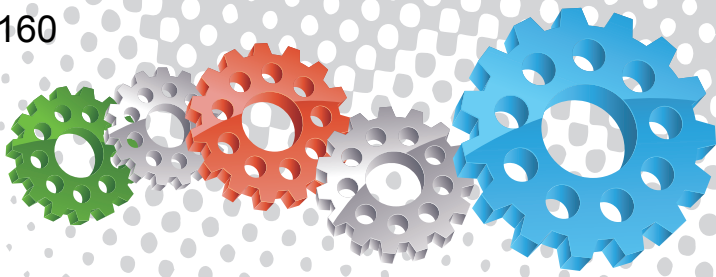


## Component Highlights



- 1 Exhaust Air Manifold
- 2 19 mm (3/4") Blast Pot Connection Port
- 3 Exhaust Diaphragm
- 4 Exhaust Valve Body
- 5 Cylinder Piston O-ring
- 6 End Cap Gasket
- 7 Quick Release End Cap
- 8 Pilot Air Activation Connector
- 9 Piston "U" Cup Seal
- 10 Activation Piston
- 11 Exhaust Cylinder Piston
- 12 Die Cast Aluminium Construction
- 13 Exhaust Air Manifold Seal
- 14 19 mm (3/4") Silencer Connection Port





## Assembly

Stock Code	Description	Weight
BAC-RC-PB-0310	Helix 50 NPT Outlet Valve Assembly	2.13 kg (4.69 lbs)

## Service Kits

Stock Code	Description	Include Items
YAC-RC-PB-0335	End Cap Kit	15 16 19
BAC-RC-0476-00	Helix 50 Valve Seal Kit	3 6 8 13 15





## Parts List



Description	Qty	Description	Qty	Description	Qty
1 Nipple - NPT	1	8 O-Ring	1	15 Cap Gasket	1
2 Exhaust Manifold - NPT	1	9 Exhaust Cylinder - NPT	1	16 Cylinder Housing Cap	1
3 O-Ring	1	10 Lock Nut	4	17 Flat Washer	4
4 Screw	4	11 Spring Washer	4	18 Screw	4
5 Exhaust Base - NPT	1	12 Piston	1	19 Nipple	1
6 Diaphragm	1	13 Piston U-Seal	1		
7 Outlet Piston - NPT	1	14 Screw	1		



# 1" NPT Diaphragm Dump Valve



## Product Features

The PanBlast™ 1" NPT Diaphragm Dump Valve is an air actuated right angle exhaust valve, designed for blast pot exhaust applications where larger porting and flow capacities are required. The NPT configuration is compatible with most U.S. blasting equipment.

- ▶ Simple design for easy operation and maintenance.
- ▶ Powder coated, cast aluminum exterior.
- ▶ Nitrile rubber diaphragm.
- ▶ 6 mm (1/4 ") NPT air supply connection.
- ▶ 25 mm (1") NPT exhaust air ports.
- ▶ Repair parts readily available.

## Common Applications

- ▶ Blast pot exhaust systems requiring quick depressurization.
- ▶ Economical remote exhaust control for simple blasting operations.

## Complementary Products



Helix 100 NPT Inlet Valve



Tandem Inlet Valve



QuikStop IIS Pneumatic Handle



Sola 10 Inlet Valve



AirFlo Pneumatic Handle



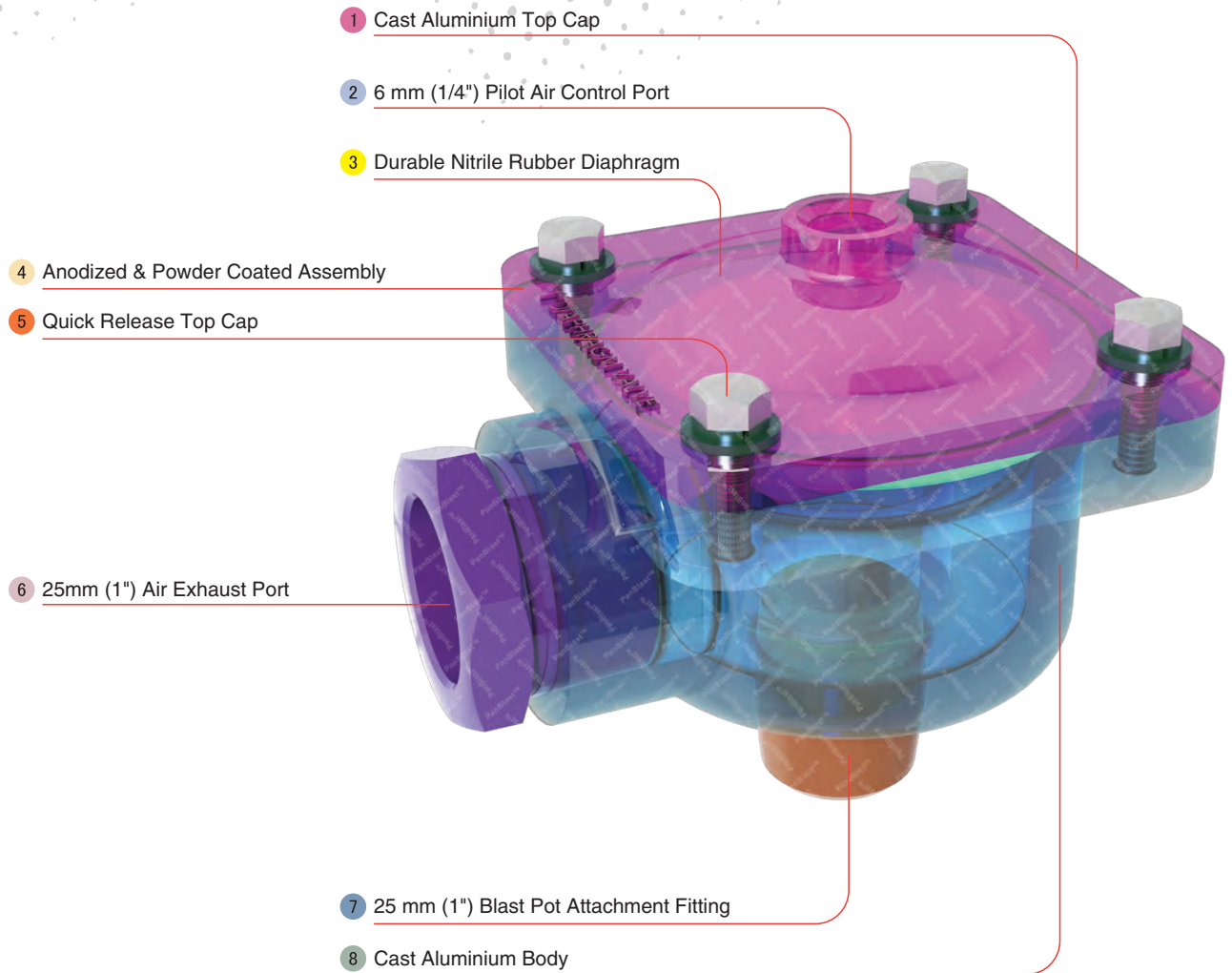
Sola 30 Inlet Valve



Twinline Hose



Exhaust Muffler



## Component Highlights



1 Cast Aluminium Top Cap

4 Anodized & Powder Coated Assembly

7 25 mm (1") Blast Pot Attachment Fitting

2 6 mm (1/4") Pilot Air Control Port

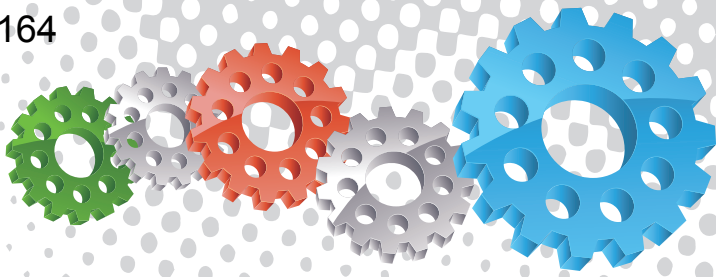
5 Quick Release Top Cap

8 Cast Aluminium Body

3 Durable Nitrile Rubber Diaphragm

6 25mm (1") Air Exhaust Port





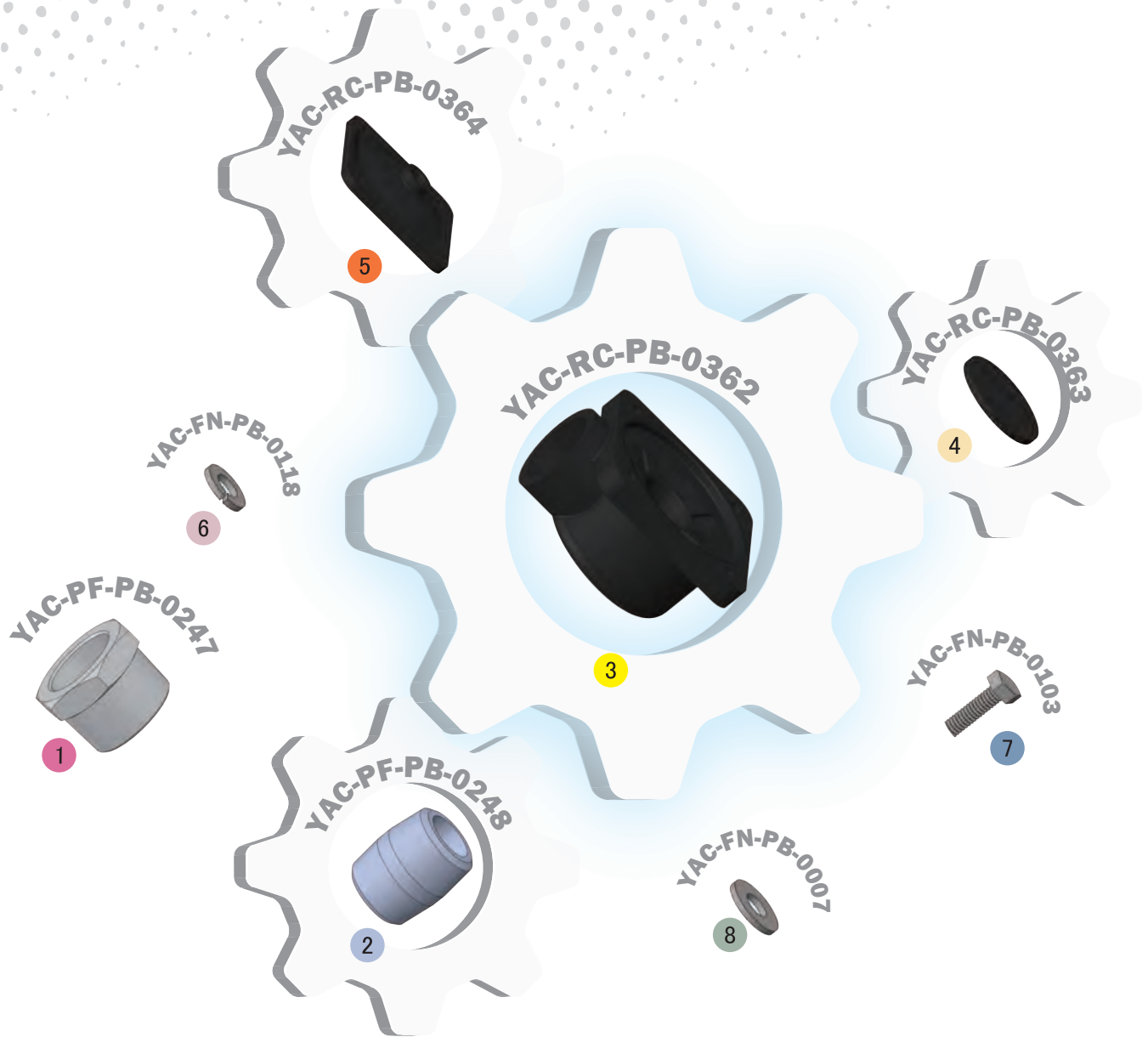
## Assembly

Stock Code  
BAC-RC-PB-0361

Description  
1" NPT Diaphragm Dump Valve

Weight  
1.2 kg (2.6 lbs)





## Parts List



Description	Qty	Description	Qty	Description	Qty
1 Reducing Bush – NPT	1	4 Diaphragm	1	7 Hex Head Bolt	4
2 Barrel Nipple - NPT	1	5 Cap	1	8 Flat Washer	4
3 Body	1	6 Spring Washer	4		



# HiFlo NPT Exhaust Dump Valve Assembly



## Product Features

The PanBlast™ HiFlo NPT Exhaust Dump Valve Assembly is a piston operated type valve, designed for use with blast pot remote control systems utilizing the Sola 10/30 or similar control valves. The NPT configuration is compatible with most U.S. blasting equipment.

- ▶ Rugged, reliable piston operation.
- ▶ Lightweight cast aluminum body.
- ▶ Anodized internal parts.
- ▶ Powder coated exterior.
- ▶ Service kit available.
- ▶ 25 mm (1") NPT threaded connection.

## Common Applications

- ▶ Remote exhaust control for medium capacity blast pots
- ▶ Replacement and upgrade of OEM valves.

## Complementary Products



Helix 100 NPT Inlet Valve



Tandem Inlet Valve



QuikStop IIS Pneumatic Handle



Sola 10 Inlet Valve



AirFlo Pneumatic Handle



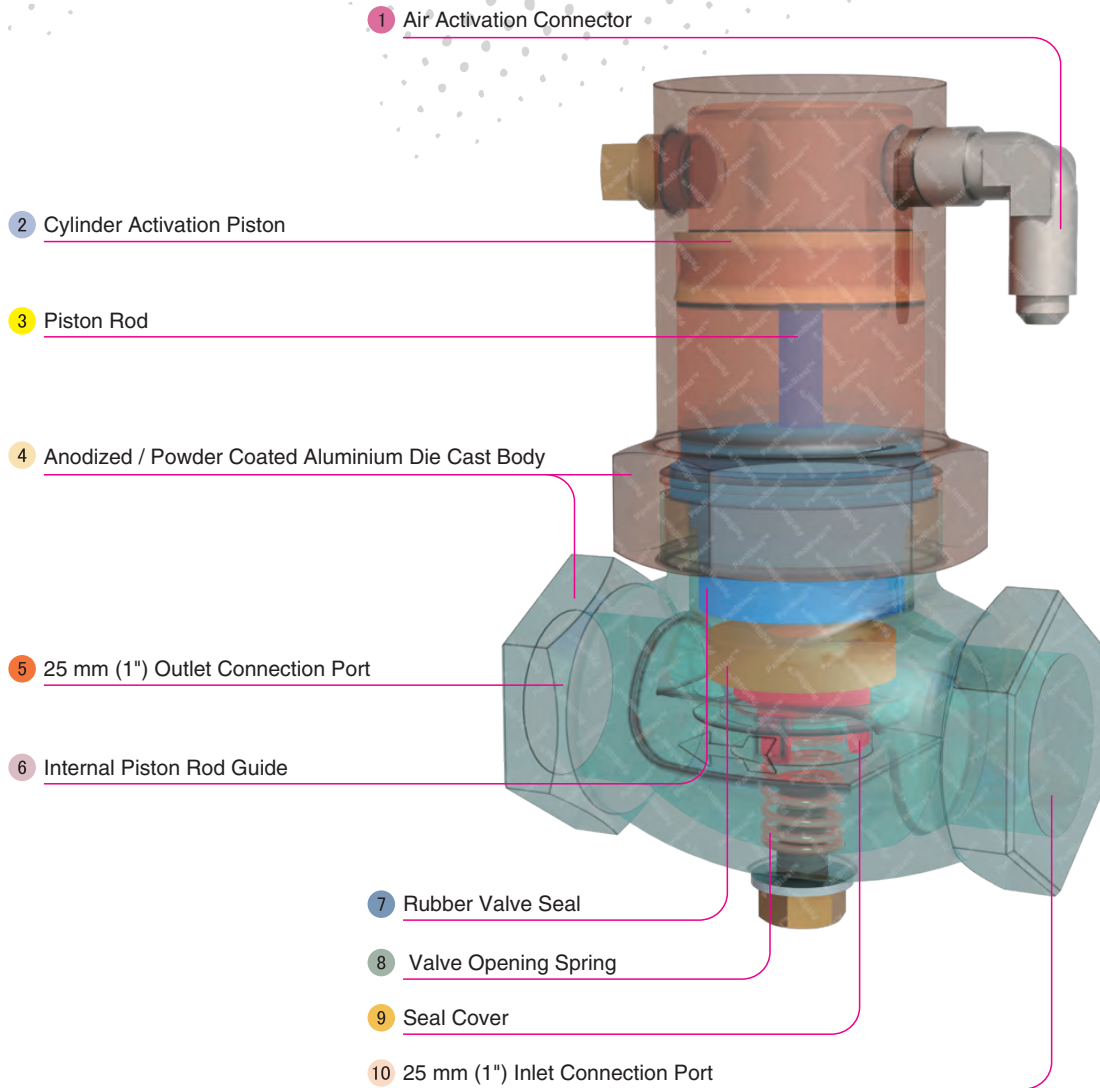
Sola 30 Inlet Valve



AbraFlo Abrasive Trap



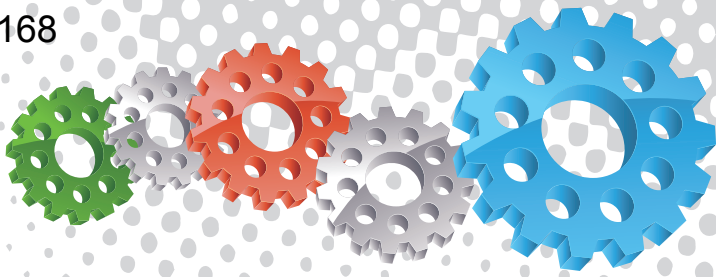
Exhaust Muffler



## Component Highlights



- |  |                                     |                                     |
|--|-------------------------------------|-------------------------------------|
| 1 Air Activation Connector                         | 5 25 mm (1") Outlet Connection Port | 9 Seal Cover                        |
| 2 Cylinder Activation Piston                       | 6 Internal Piston Rod Guide         | 10 25 mm (1") Inlet Connection Port |
| 3 Piston Rod                                       | 7 Rubber Valve Seal                 |                                     |
| 4 Anodized / Powder Coated Aluminium Die Cast Body | 8 Valve Opening Spring              |                                     |



## Assembly

Stock Code  
BAC-RC-PB-0197

Description  
HiFlo NPT Exhaust Dump Valve Assembly

Weight  
0.8 kg (1.76 lbs)





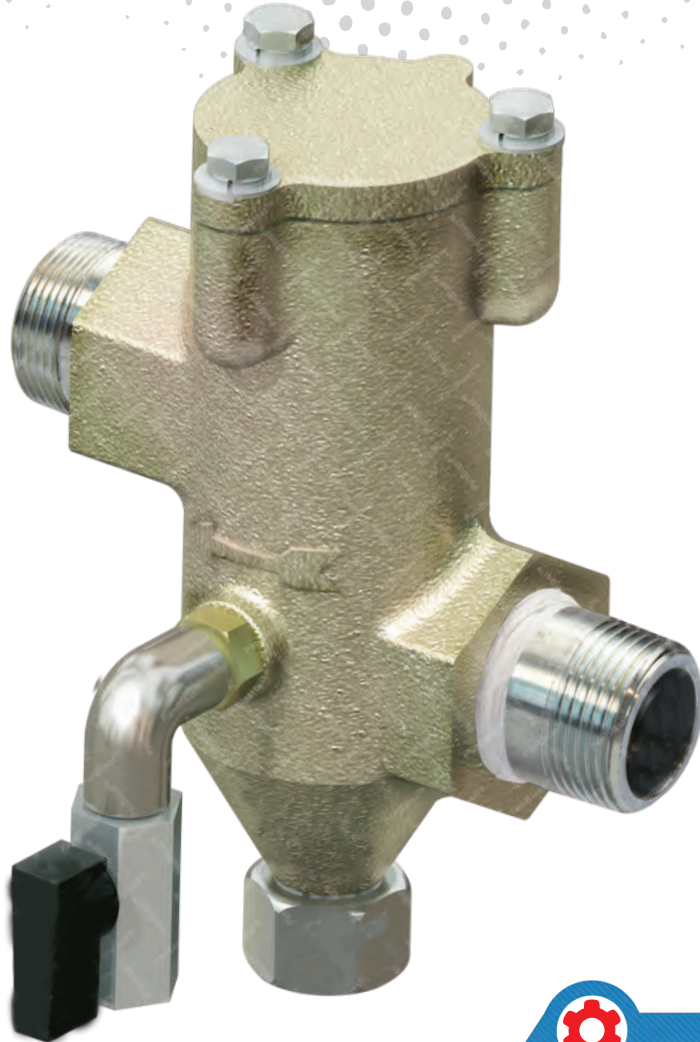
## Parts List



Description	Qty	Description	Qty	Description	Qty
1 Base	1	6 Piston Rod Guide	1	11 Flat Washer	1
2 Nut	1	7 Rubber Seat	1	12 Screw	1
3 Rubber Piston	1	8 Rubber Seal	1	13 Plug	1
4 Piston Rod	1	9 Rubber Seal Cover	1	14 NPT/UNF Elbow	1
5 Spring	1	10 Body	1		



# AbraFlo Abrasive Trap II Assembly



## Product Features

The PanBlast™ AbraFlo Abrasive Trap II Assembly uses cyclonic action and an abrasive screen to trap any abrasive particles in the blast pot exhaust stream. This greatly reduces wear on the exhaust valve and exhaust muffler and reduces the risk of operator injury from airborne abrasive particles. The NPT configuration is compatible with most U.S. blasting equipment.

- ▶ Lower storage hopper.
- ▶ Quick release drain port.
- ▶ Quick release cap for screen changes and maintenance.
- ▶ Blow down valve on lower chamber for quick purging.
- ▶ 25 mm (1") NPT threaded connections.

## Common Applications

- ▶ Protection of blasting personnel.
- ▶ Life extension of blast pot exhaust valves.

## Complementary Products



Sola 5 Inlet Valve



Sola 10 Inlet Valve



Helix 50 Outlet Valve



Sola 30 Inlet Valve



Diaphragm Dump Valve



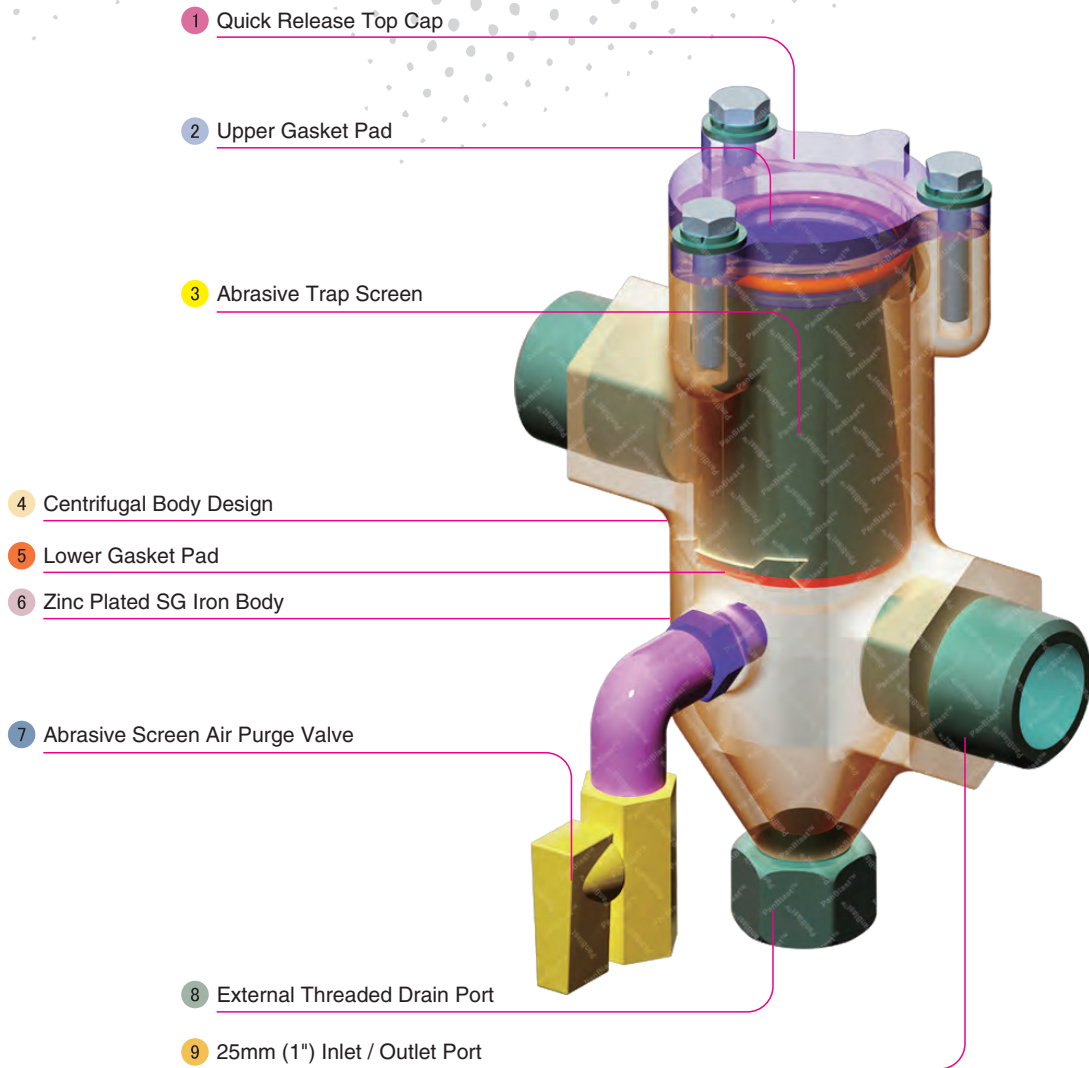
Exhaust Muffler



HiFlo Exhaust Valve



Helix 150 Remote Valve



## Component Highlights



1 Quick Release Top Cap

2 Upper Gasket Pad

3 Abrasive Trap Screen

4 Centrifugal Body Design

5 Lower Gasket Pad

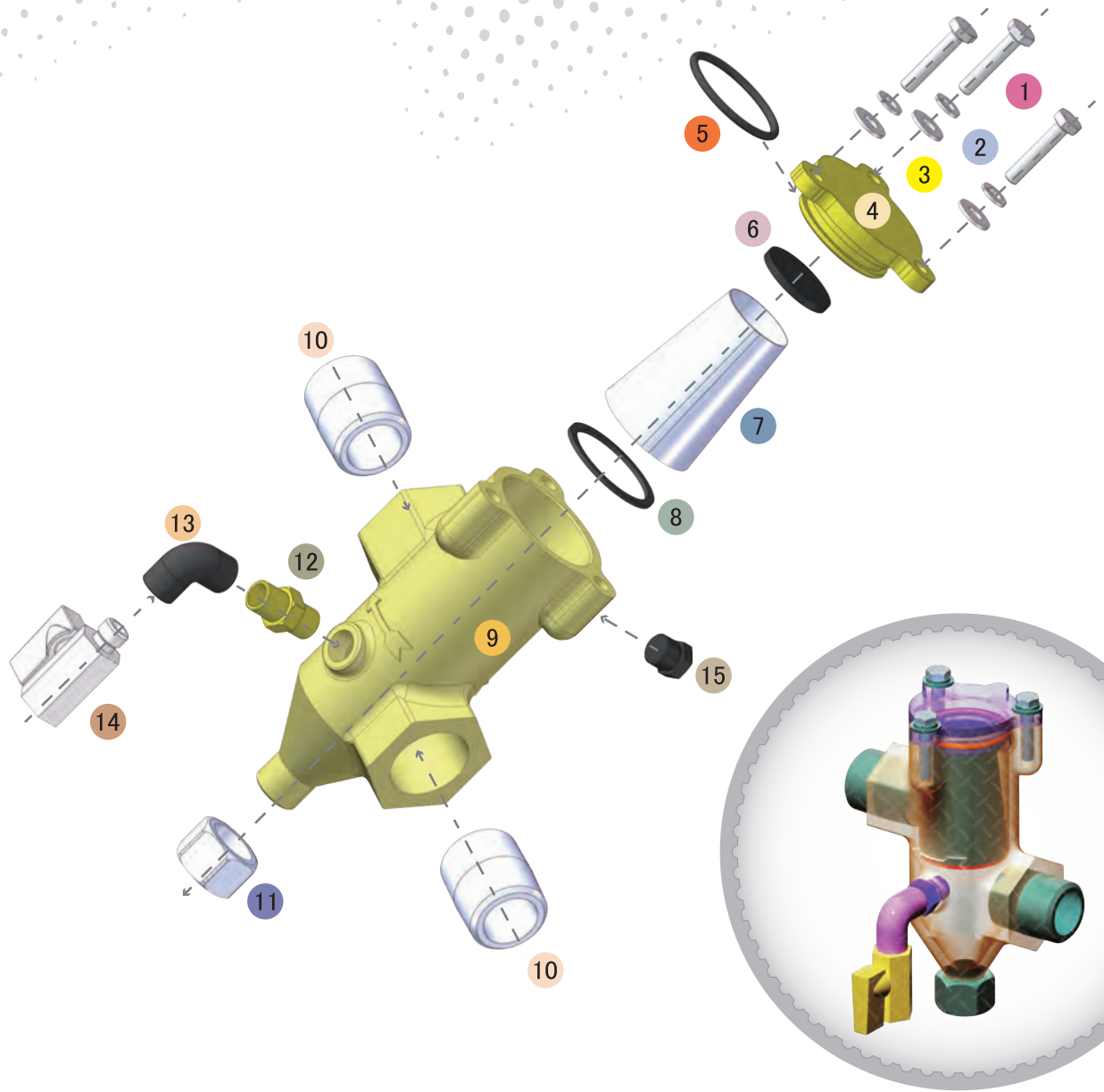
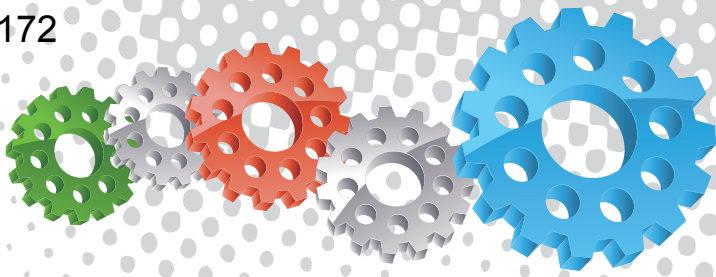
6 Zinc Plated SG Iron Body

7 Abrasive Screen Air Purge Valve

8 External Threaded Drain Port

9 25 mm (1") Inlet / Outlet Port





## Assembly

Stock Code	Description	Weight
BAC-VA-0353-00	AbraFlo NPT Abrasive Trap II Assembly	1.7 kg (3.75 lbs)





## Parts List



Description	Qty	Description	Qty	Description	Qty
1 Screw	3	6 Rubber Pad	1	11 NPT Cap – Stainless Steel	1
2 Spring Washer	3	7 Abrasives Trap Screen	1	12 Nipple	1
3 Flat Washer	3	8 Screen Gasket	1	13 NPT Elbow – Stainless Steel	1
4 Cap	1	9 Body	1	14 Mini Ball Valve	1
5 O-Ring	1	10 Thread Sleeve	2	15 Hex Plug	1

Архангельск (8182)63-90-72  
Астана (7172)727-132  
Астрахань (8512)99-46-04  
Барнаул (3852)73-04-60  
Белгород (4722)40-23-64  
Брянск (4832)59-03-52  
Владивосток (423)249-28-31  
Волгоград (844)278-03-48  
Вологда (8172)26-41-59  
Воронеж (473)204-51-73  
Екатеринбург (343)384-55-89  
Иваново (4932)77-34-06

Ижевск (3412)26-03-58  
Иркутск (395)279-98-46  
Казань (843)206-01-48  
Калининград (4012)72-03-81  
Калуга (4842)92-23-67  
Кемерово (3842)65-04-62  
Киров (8332)68-02-04  
Краснодар (861)203-40-90  
Красноярск (391)204-63-61  
Курск (4712)77-13-04  
Липецк (4742)52-20-81

Киргизия (996)312-96-26-47

Магнитогорск (3519)55-03-13  
Москва (495)268-04-70  
Мурманск (8152)59-64-93  
Набережные Челны (8552)20-53-41  
Нижний Новгород (831)429-08-12  
Новокузнецк (3843)20-46-81  
Новосибирск (383)227-86-73  
Омск (3812)21-46-40  
Орел (4862)44-53-42  
Оренбург (3532)37-68-04  
Пенза (8412)22-31-16

Россия (495)268-04-70

Пермь (342)205-81-47  
Ростов-на-Дону (863)308-18-15  
Рязань (4912)46-61-64  
Самара (846)206-03-16  
Санкт-Петербург (812)309-46-40  
Саратов (845)249-38-78  
Севастополь (8692)22-31-93  
Симферополь (3652)67-13-56  
Смоленск (4812)29-41-54  
Сочи (862)225-72-31  
Ставрополь (8652)20-65-13

Казахстан (772)734-952-31

Сургут (3462)77-98-35  
Тверь (4822)63-31-35  
Томск (3822)98-41-53  
Тула (4872)74-02-29  
Тюмень (3452)66-21-18  
Ульяновск (8422)24-23-59  
Уфа (347)229-48-12  
Хабаровск (4212)92-98-04  
Челябинск (351)202-03-61  
Череповец (8202)49-02-64  
Ярославль (4852)69-52-93

[www.panblast.nt-rt.ru](http://www.panblast.nt-rt.ru) | | [pav@nt-rt.ru](mailto:pav@nt-rt.ru)