

Архангельск (8182)63-90-72  
Астана (7172)727-132  
Астрахань (8512)99-46-04  
Барнаул (3852)73-04-60  
Белгород (4722)40-23-64  
Брянск (4832)59-03-52  
Владивосток (423)249-28-31  
Волгоград (844)278-03-48  
Вологда (8172)26-41-59  
Воронеж (473)204-51-73  
Екатеринбург (343)384-55-89  
Иваново (4932)77-34-06

Ижевск (3412)26-03-58  
Иркутск (395)279-98-46  
Казань (843)206-01-48  
Калининград (4012)72-03-81  
Калуга (4842)92-23-67  
Кемерово (3842)65-04-62  
Киров (8332)68-02-04  
Краснодар (861)203-40-90  
Красноярск (391)204-63-61  
Курск (4712)77-13-04  
Липецк (4742)52-20-81

Киргизия (996)312-96-26-47

Магнитогорск (3519)55-03-13  
Москва (495)268-04-70  
Мурманск (8152)59-64-93  
Набережные Челны (8552)20-53-41  
Нижний Новгород (831)429-08-12  
Новокузнецк (3843)20-46-81  
Новосибирск (383)227-86-73  
Омск (3812)21-46-40  
Орел (4862)44-53-42  
Оренбург (3532)37-68-04  
Пенза (8412)22-31-16

Россия (495)268-04-70

Пермь (342)205-81-47  
Ростов-на-Дону (863)308-18-15  
Рязань (4912)46-61-64  
Самара (846)206-03-16  
Санкт-Петербург (812)309-46-40  
Саратов (845)249-38-78  
Севастополь (8692)22-31-93  
Симферополь (3652)67-13-56  
Смоленск (4812)29-41-54  
Сочи (862)225-72-31  
Ставрополь (8652)20-65-13

Казахстан (772)734-952-31

Сургут (3462)77-98-35  
Тверь (4822)63-31-35  
Томск (3822)98-41-53  
Тула (4872)74-02-29  
Тюмень (3452)66-21-18  
Ульяновск (8422)24-23-59  
Уфа (347)229-48-12  
Хабаровск (4212)92-98-04  
Челябинск (351)202-03-61  
Череповец (8202)49-02-64  
Ярославль (4852)69-52-93

[www.panblast.nt-rt.ru](http://www.panblast.nt-rt.ru) | | [pav@nt-rt.ru](mailto:pav@nt-rt.ru)

# Технические характеристики на воздухосборники (клапаны дистанционного управления) компании **PanBlast**



# Sola 5 Inlet Valve Assembly



## Product Features

The PanBlast™ Sola 5 Inlet Valve Assembly combines a piston type inlet valve to control supply air for smaller blast pots. The BSP configuration is compatible with most non-U.S. pressure blasting equipment.

- ▶ Fast, positive inlet valve actuation.
- ▶ Anodized internal valve surfaces.
- ▶ Simple maintenance.
- ▶ Parts and service kits available.
- ▶ 13 mm (1/2") BSP threads.

## Common Applications

- ▶ Blast room, yard and on site operations.
- ▶ Remote control for low capacity blast pots.

## Complementary Products



Moisture Separator



Pop Up Valves



QuikStop IIS Pneumatic Handle



Sola 5 Exhaust Valve



AirFlo Pneumatic Handle



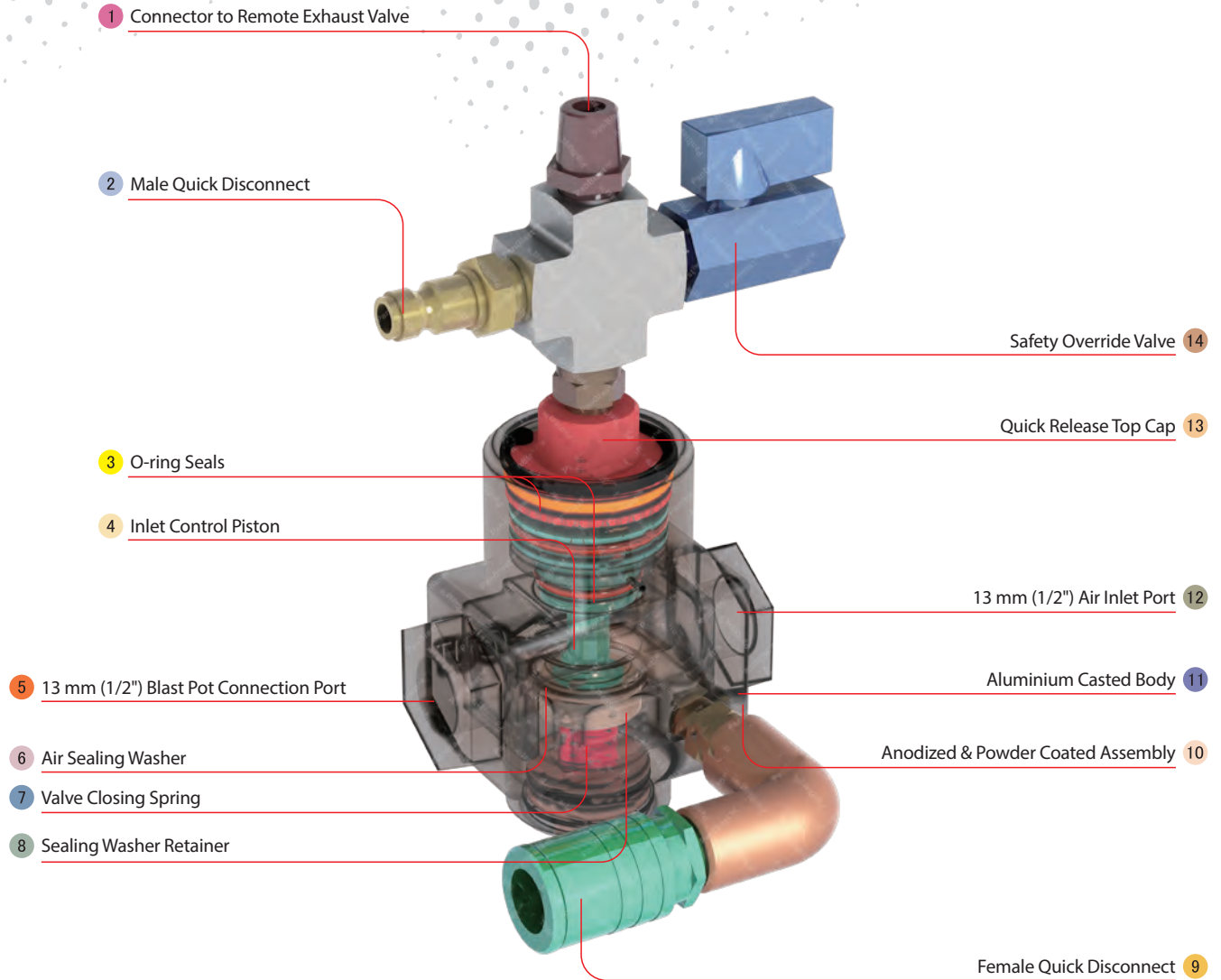
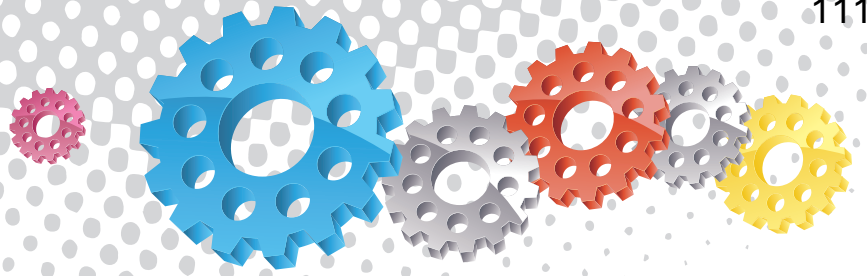
Junior Plana Valve



Twinline Hose



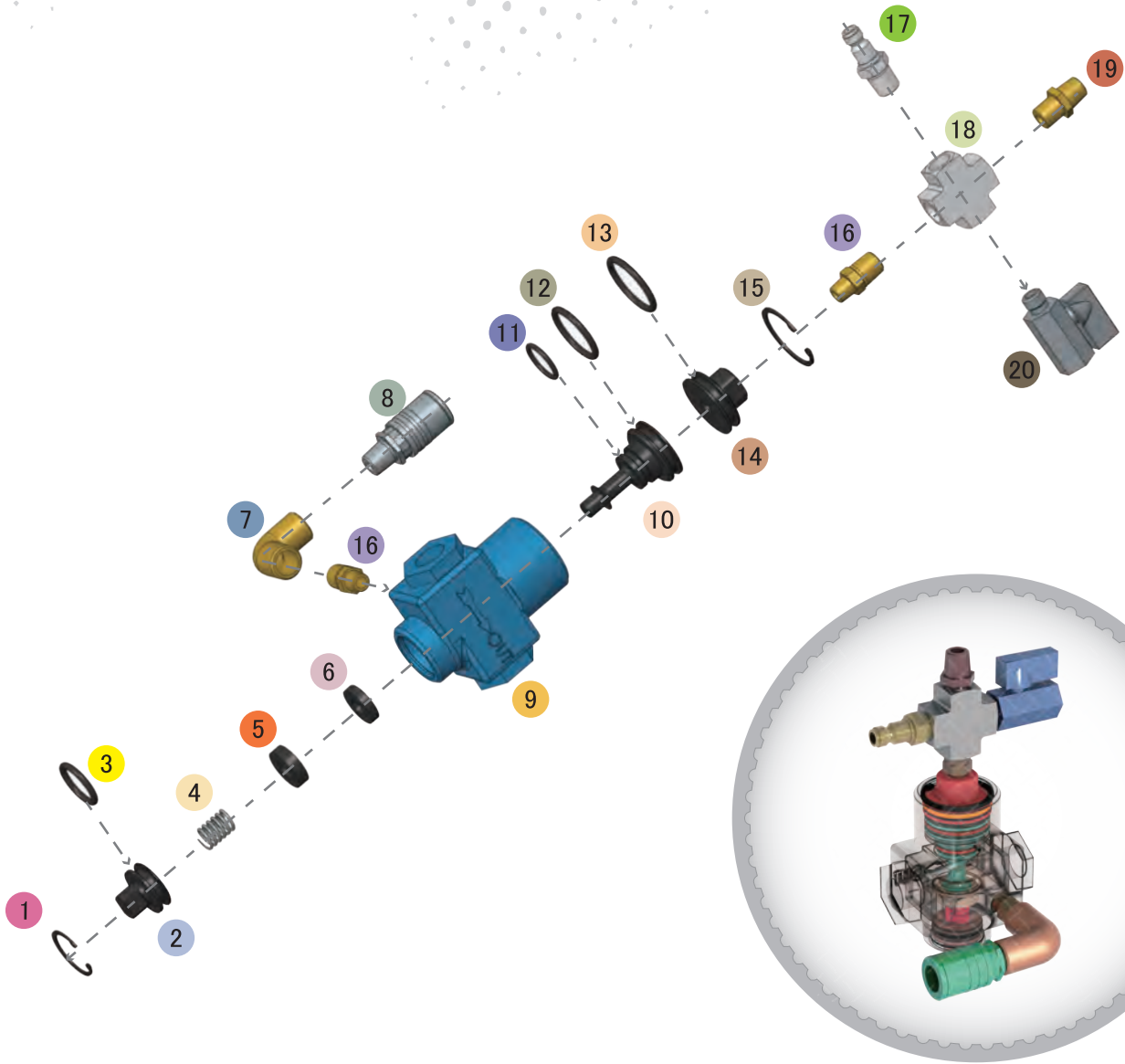
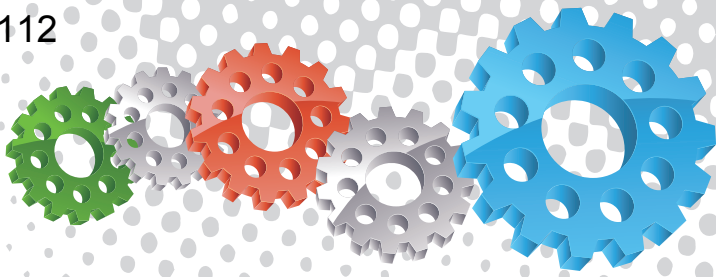
Exhaust Muffler



## Component Highlights



- 1 Connector to Remote Exhaust Valve
- 2 Male Quick Disconnect
- 3 O-ring Seals
- 4 Inlet Control Piston
- 5 13 mm (1/2") Blast Pot Connection Port
- 6 Air Sealing Washer
- 7 Valve Closing Spring
- 8 Sealing Washer Retainer
- 9 Female Quick Disconnect
- 10 Anodized & Powder Coated Assembly
- 11 Aluminium Casted Body
- 12 13 mm (1/2") Air Inlet Port
- 13 Quick Release Top Cap
- 14 Safety Override Valve



## Assembly

Stock Code	Description	Weight
BAC-RC-PB-0017	Sola 5 Inlet Valve Assembly	0.67 kg (1.48 lbs)

## Service Kits

Stock Code	Description	Include Items
BAC-RC-PB-0006	Sola 5 Seal Kit	1 3 4 5 6 11 12 13 15
BAC-RC-PB-0007	Sola 5 Fittings Kit	7 8 16 x2 17 18 19 20
BAC-RC-PB-0008	Sola 5 Piston Kit	1 2 5 10 14 15





## Parts List



Description	Qty	Description	Qty	Description	Qty
1 Circlip	1	8 Quick Disconnect Fitting Female	1	15 Circlip	1
2 Bottom Plug	1	9 Body	1	16 Reducing Nipple	2
3 O-ring	1	10 Inlet Piston	1	17 Quick Disconnect Fitting Male	1
4 Spring	1	11 O-ring	1	18 Cross	1
5 Retainer	1	12 O-ring	1	19 Nipple	1
6 Rubber Washer	1	13 O-ring	1	20 Mini Ball Valve	1
7 Elbow	1	14 Cap	1		



## Sola 5 NPT Inlet Valve Assembly



### Product Features

The PanBlast™ Sola 5 NPT Inlet Valve Assembly combines a piston type inlet valve to control supply air for smaller blast pots. The NPT configuration is compatible with most U.S. pressure blasting equipment.

- ▶ Fast, positive inlet valve actuation.
- ▶ Anodized internal valve surfaces.
- ▶ Simple maintenance.
- ▶ Parts and service kits available.
- ▶ 13 mm (1/2") NPT threads.

### Common Applications

- ▶ Blast room, yard and on site operations.
- ▶ Remote control for low capacity blast pots.

## Complementary Products



Moisture Separator



Pop Up Valves



QuikStop IIS Pneumatic Handle



Sola 5 Exhaust Valve



AirFlo Pneumatic Handle



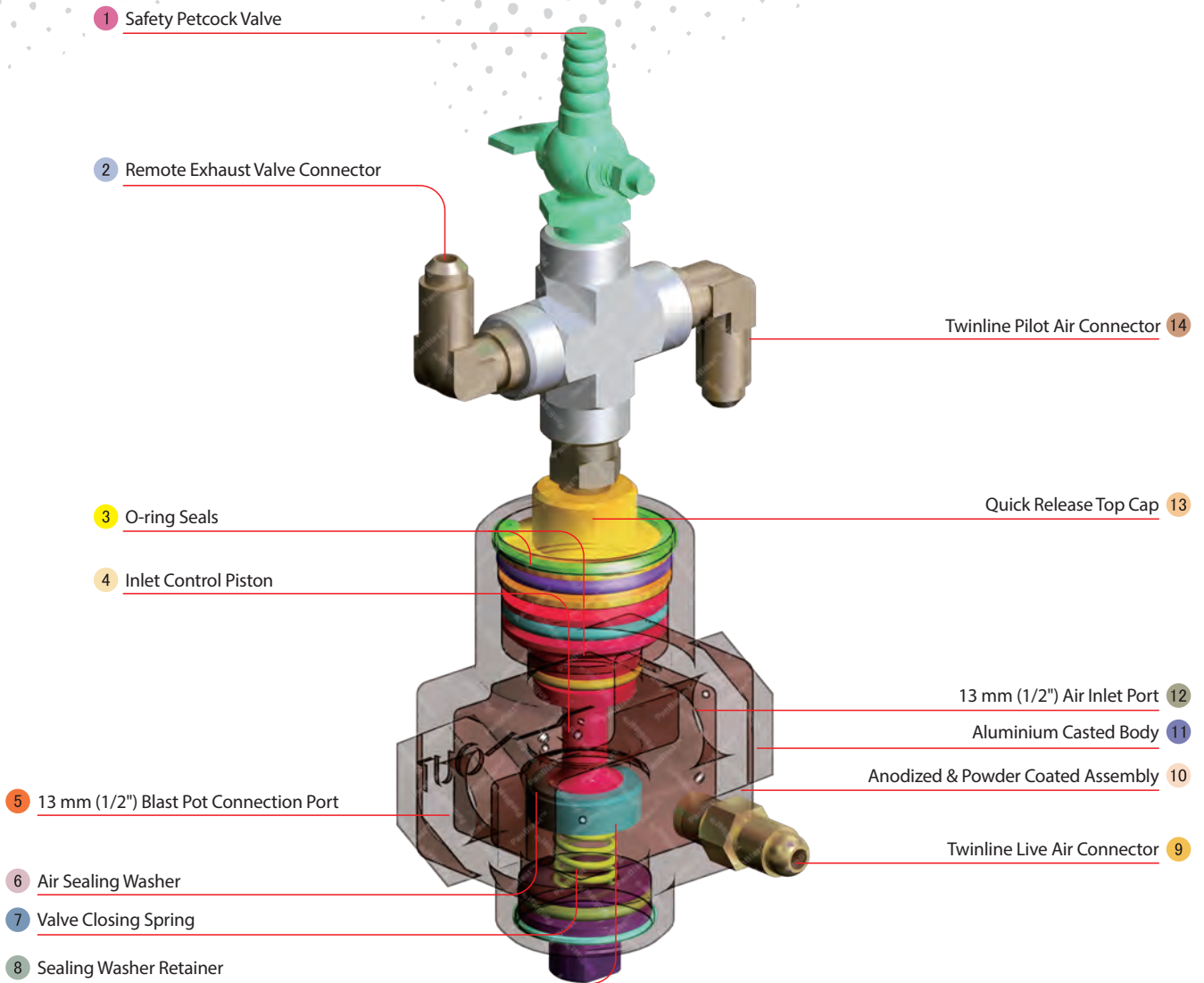
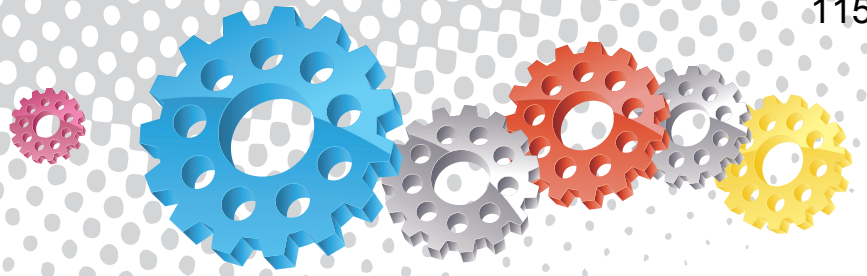
Junior Plana Valve



Twinline Hose



Exhaust Muffler

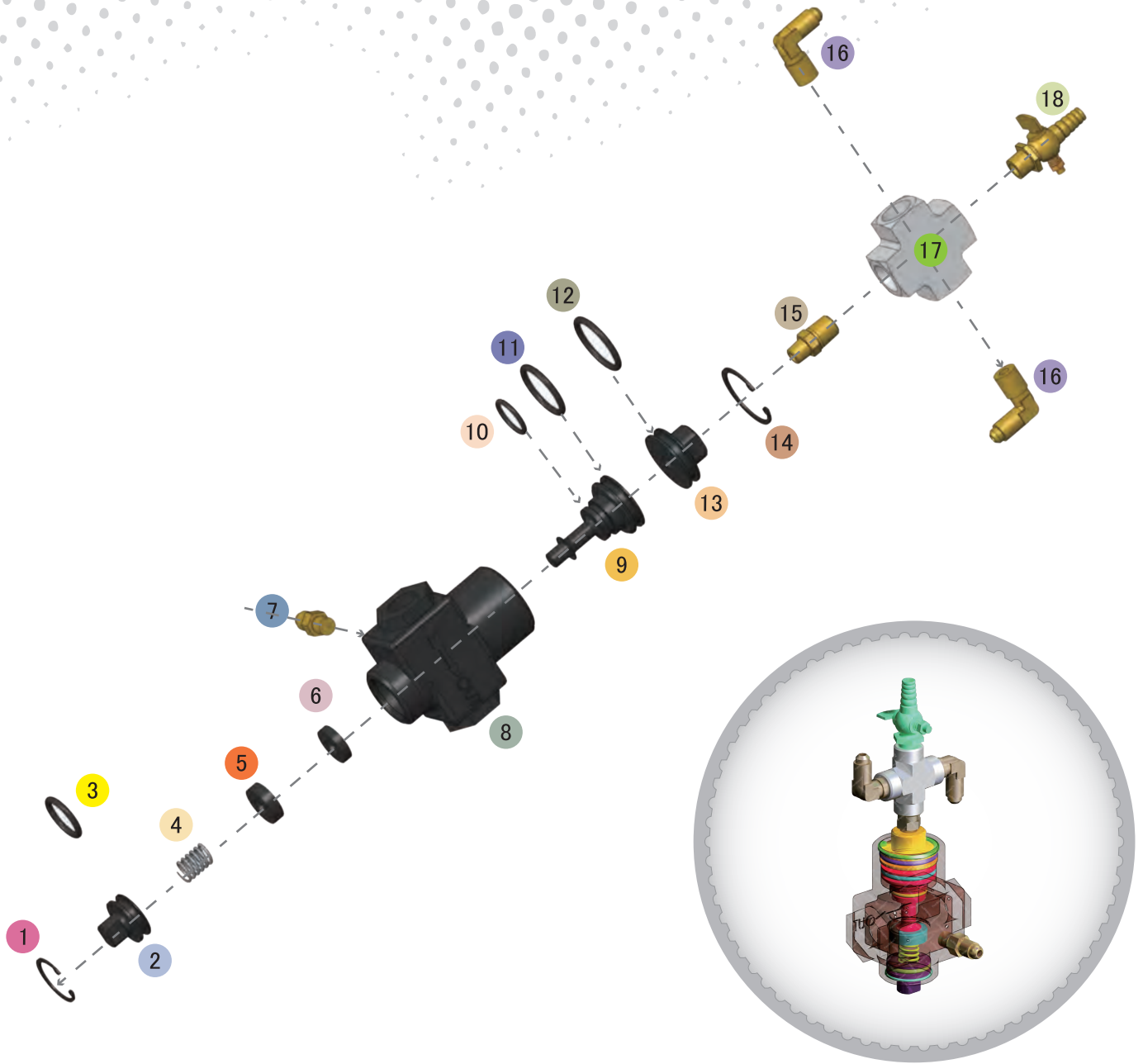
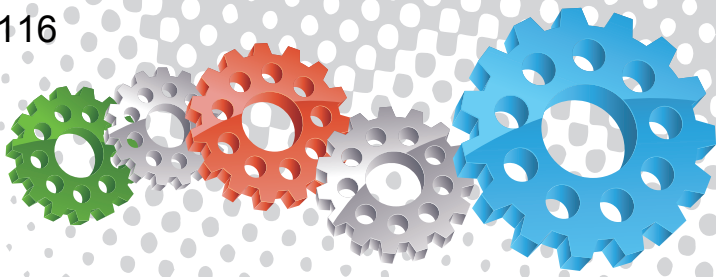


## Component Highlights



- 1 Safety Petcock Valve
- 2 Remote Exhaust Valve Connector
- 3 O-ring Seals
- 4 Inlet Control Piston
- 5 13 mm (1/2") Blast Pot Connection Port
- 6 Air Sealing Washer
- 7 Valve Closing Spring
- 8 Sealing Washer Retainer
- 9 Tinline Live Air Connector
- 10 Anodized & Powder Coated Assembly
- 11 Aluminium Casted Body
- 12 13 mm (1/2") Air Inlet Port
- 13 Quick Release Top Cap
- 14 Safety Override Valve





## Assembly

Stock Code	Description	Weight
BAC-RC-PB-0380	Sola 5 NPT Inlet Valve Assembly	0.67 kg(1.48 lbs)

## Service Kits

Stock Code	Description	Include Items
BAC-RC-PB-0006	Sola 5 Seal Kit	1 3 4 5 6 10 11 12 14





## Parts List



Description	Qty	Description	Qty	Description	Qty
1 Circlip	1	7 NPT/UNF Nipple - Restricted	1	13 Cap - NPT	1
2 Bottom Plug	1	8 Inlet Body - NPT	1	14 Circlip	1
3 O-ring	1	9 Inlet Piston	1	15 Nipple - NPT - Un-Restricted	1
4 Spring	1	10 O-ring	1	16 Elbow	2
5 Retainer	1	11 O-ring	1	17 Cross - NPT	1
6 Rubber Washer	1	12 O-ring	1	18 Pet Cock - NPT	1



# 3/4" Tandem NPT Valve Assembly



## Product Features

The PanBlast™ 3/4" Tandem NPT Valve Assembly is a pilot operated, spring return diaphragm type valve for use with remote control systems on pressure hold and multiple outlet blast pots. The valve is normally located on the air pusher line to control the blasting air, and can be combined with an abrasive control valve to provide air blow down. The NPT configuration is compatible with most U.S. blasting equipment.

- ▶ Rugged, cast iron construction.
- ▶ Quick, easy dismantled for cleaning and maintenance.
- ▶ Service kit available.
- ▶ 19 mm (3/4") NPT threads.

## Common Applications

- ▶ Remote control for pressure hold blast pots.
- ▶ Multiple operator remote control.
- ▶ Air blow down for component cleanup.

## Complementary Products



AirStop Pneumatic Handle



Twinline Hose



AirStop II Pneumatic Handle



AirStop II Electric Handle



AirStop Electric Handle



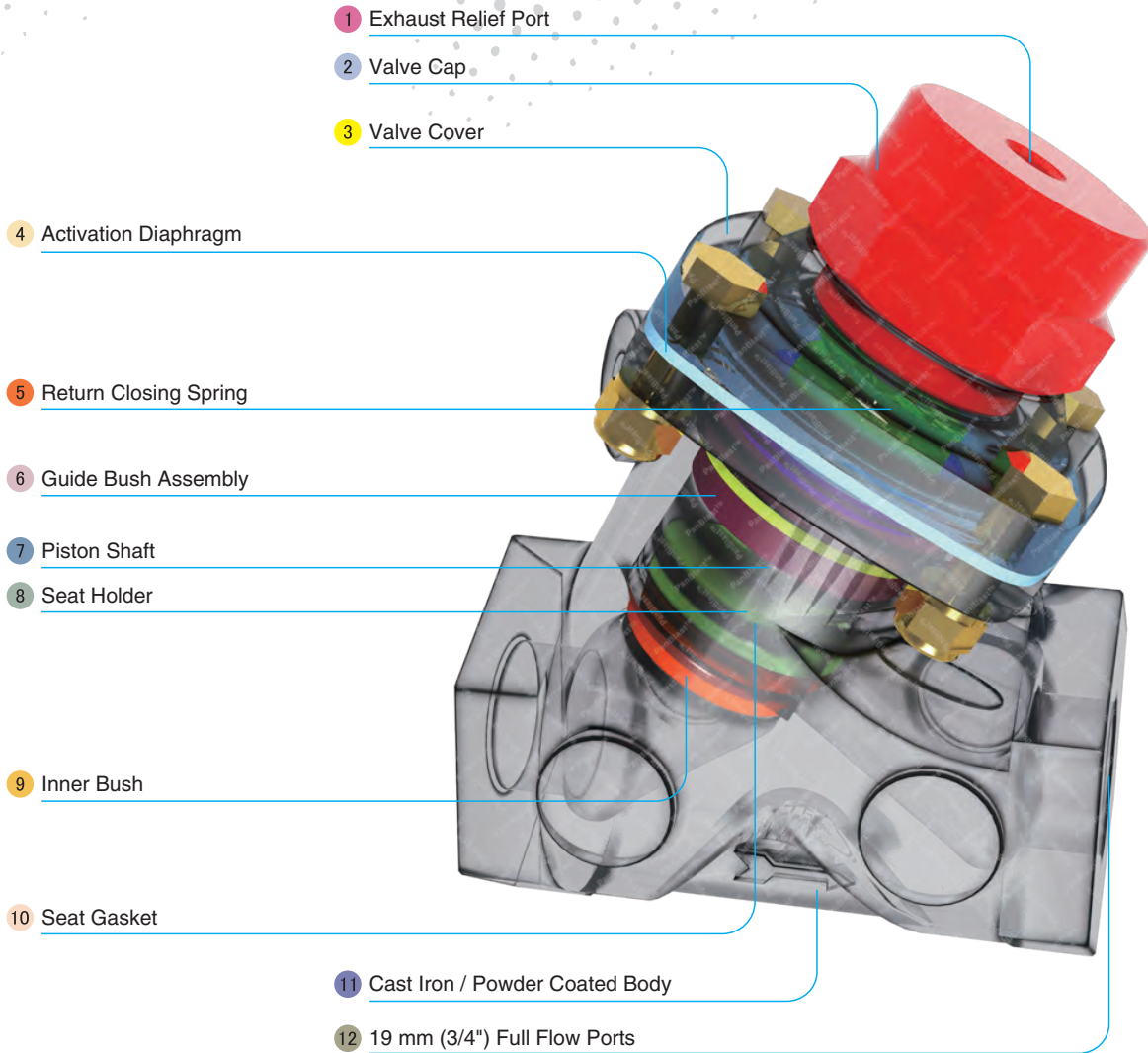
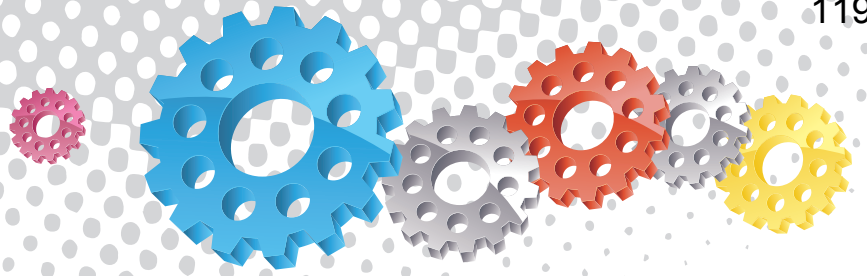
AirStop IV Pneumatic Handle



Exhaust Muffler



Pop Up Valves

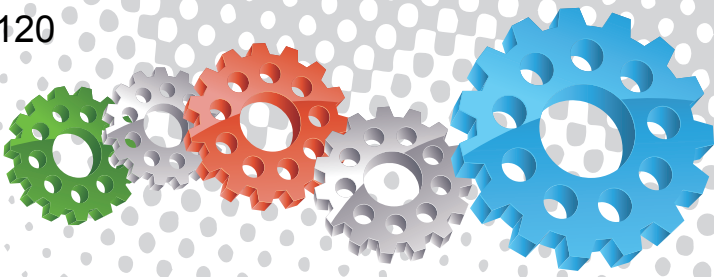


## Component Highlights



- |                        |                         |                                   |
|------------------------|-------------------------|-----------------------------------|
| 1 Exhaust Relief Port  | 5 Return Closing Spring | 9 Inner Bush                      |
| 2 Valve Cap            | 6 Guide Bush Assembly   | 10 Seat Gasket                    |
| 3 Valve Cover          | 7 Piston Shaft          | 11 Cast Iron / Powder Coated Body |
| 4 Activation Diaphragm | 8 Seat Holder           | 12 19 mm (3/4") Full Flow Ports   |





## Assembly

Stock Code	Description	Weight
BAC-RC-PB-0274	3/4" Tandem NPT Valve Assembly	2.1 kg (4.63 lbs)

## Service Kits

Stock Code	Description	Include Items
BAC-RC-PB-0278	3/4" & 1" Tandem Valve Service Kit	2 4 x2 5 x3 7 9 10 13 16
BAC-RC-0537-00	Tandem Valve 3/4" & 1" Repair Kit	2 5 x3 6 7 10 11 13 14 16 18 x4





## Parts List



Description	Qty	Description	Qty	Description	Qty
1 Cap	1	8 Guide Bush	1	15 Inner Bush	1
2 O-ring	1	9 O-ring	1	16 O-ring	1
3 Cover	1	10 O-ring	1	17 Body	1
4 Lock Nut	2	11 Connecting Shaft	1	18 Spring Washer	4
5 Flat Washer	3	12 Gasket Holder	1	19 Nut	4
6 Flat Washer	2	13 Rubber Gasket	1	20 Screw	4
7 Diaphragm	1	14 Gasket Retainer	1	21 Spring	1



# 1" Tandem NPT Valve Assembly



## Product Features

The PanBlast™ 1" Tandem NPT Valve Assembly is a pilot operated, spring return diaphragm type valve for use with remote control systems on pressure hold and multiple outlet blast pots. The valve is normally located on the air pusher line to control the blasting air, and can be combined with an abrasive control valve to provide air blow down. The NPT configuration is compatible with most U.S. blasting equipment.

- ▶ Rugged, cast iron construction.
- ▶ Quick, easy dismantled for cleaning and maintenance.
- ▶ Service kit available.
- ▶ 25 mm (1") NPT threads.

## Common Applications

- ▶ Remote control for pressure hold blast pots.
- ▶ Multiple operator remote control.
- ▶ Air blow down for component cleanup.

## Complementary Products



AirStop Pneumatic Handle



Twinline Hose



AirStop II Pneumatic Handle



AirStop II Electric Handle



AirStop Electric Handle



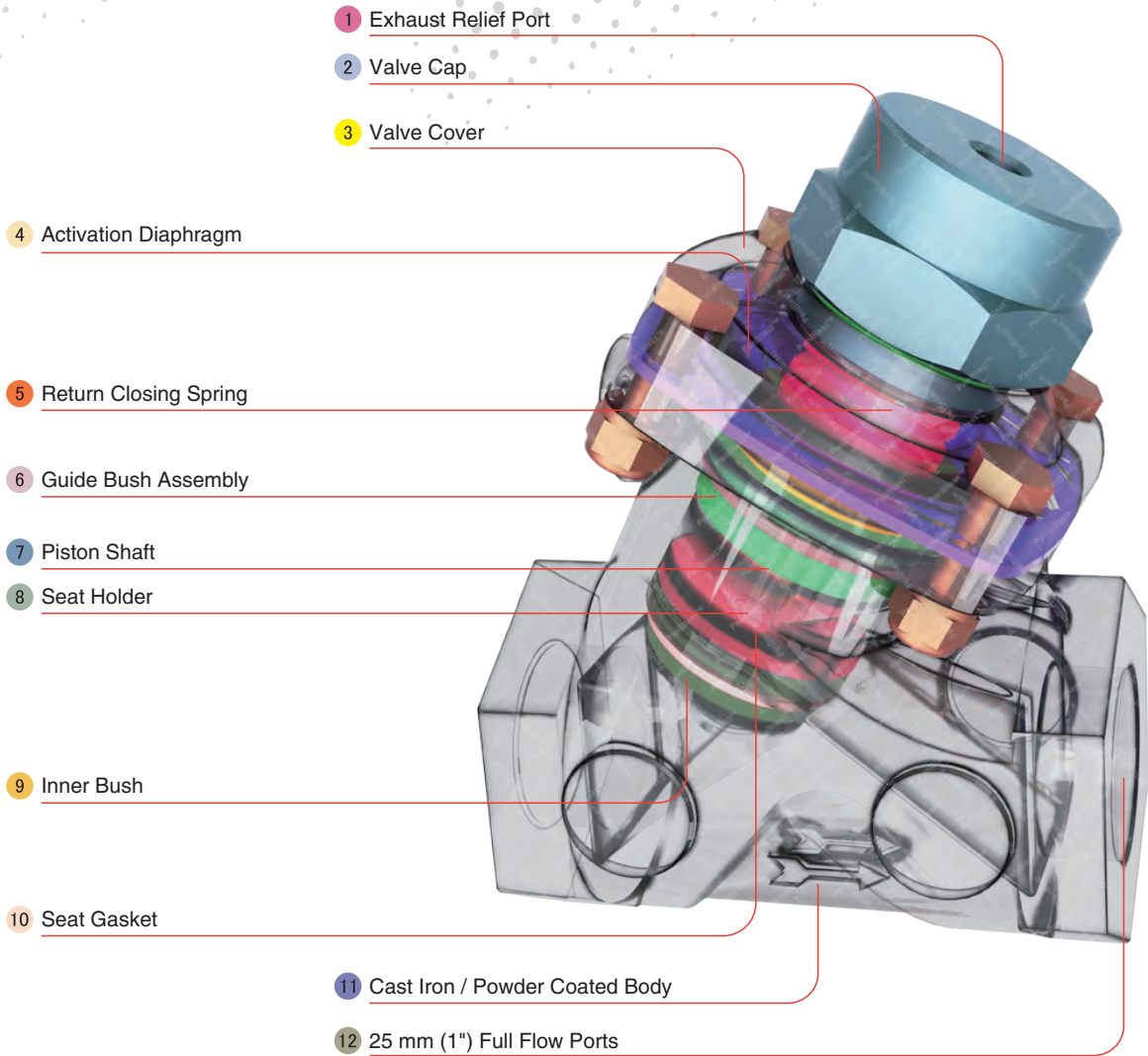
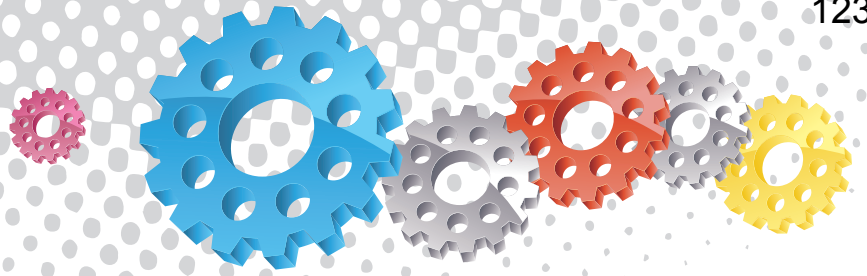
AirStop IV Pneumatic Handle



Exhaust Muffler



Pop Up Valves

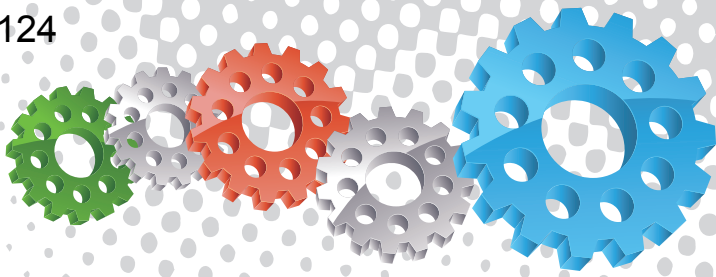


## Component Highlights



- |                        |                         |                                   |
|------------------------|-------------------------|-----------------------------------|
| 1 Exhaust Relief Port  | 5 Return Closing Spring | 9 Inner Bush                      |
| 2 Valve Cap            | 6 Guide Bush Assembly   | 10 Seat Gasket                    |
| 3 Valve Cover          | 7 Piston Shaft          | 11 Cast Iron / Powder Coated Body |
| 4 Activation Diaphragm | 8 Seat Holder           | 12 25 mm (1") Full Flow Ports     |





## Assembly

Stock Code	Description	Weight
BAC-RC-PB-0275	1" Tandem NPT Valve Assembly	2.04 kg (4.5 lbs)

## Service Kits

Stock Code	Description	Include Items
BAC-RC-PB-0278	3/4" & 1" Tandem Valve Service Kit	2 4 x2 5 x3 7 9 10 13 16
BAC-RC-0537-00	Tandem Valve 3/4" & 1" Repair Kit	2 5 x3 6 7 10 11 13 14 16 18 x4





## Parts List



Description	Qty	Description	Qty	Description	Qty
1 Cap	1	8 Guide Bush	1	15 Inner Bush	1
2 O-ring	1	9 O-ring	1	16 O-ring	1
3 Cover	1	10 O-ring	1	17 Body	1
4 Lock Nut	2	11 Connecting Shaft	1	18 Spring Washer	4
5 Flat Washer	3	12 Gasket Holder	1	19 Nut	4
6 Flat Washer	2	13 Rubber Gasket	1	20 Screw	4
7 Diaphragm	1	14 Gasket Retainer	1	21 Spring	1



# 1-1/4" Tandem NPT Valve Assembly



## Product Features

The PanBlast™ 1-1/4" Tandem NPT Valve Assembly is a pilot operated, spring return diaphragm type valve for use with remote control systems on pressure hold and multiple outlet blast pots. The valve is normally located on the air pusher line to control the blasting air, and can be combined with an abrasive control valve to provide air blow down. The NPT configuration is compatible with most U.S. blasting equipment.

- ▶ Rugged, cast iron construction.
- ▶ Quick, easy dismantled for cleaning and maintenance.
- ▶ Service kit available.
- ▶ 32 mm (1-1/4") NPT threads.

## Common Applications

- ▶ Remote control for pressure hold blast pots.
- ▶ Multiple operator remote control.
- ▶ Air blow down for component cleanup.

## Complementary Products



AirStop Pneumatic Handle



Twinline Hose



AirStop II Pneumatic Handle



AirStop II Electric Handle



AirStop Electric Handle



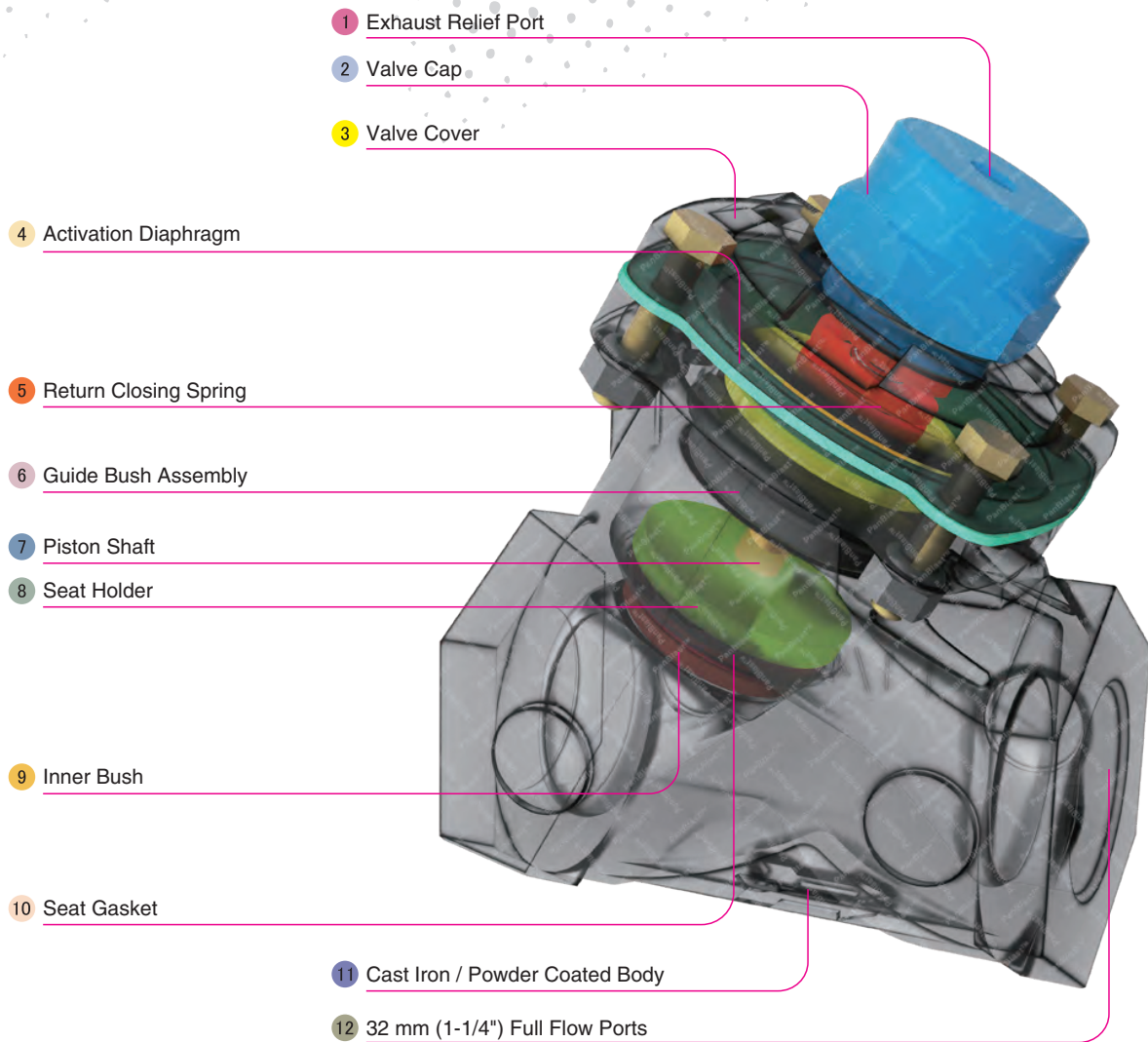
AirStop IV Pneumatic Handle



Exhaust Muffler



Pop Up Valves



## Component Highlights



1 Exhaust Relief Port

2 Valve Cap

3 Valve Cover

4 Activation Diaphragm

5 Return Closing Spring

6 Guide Bush Assembly

7 Piston Shaft

8 Seat Holder

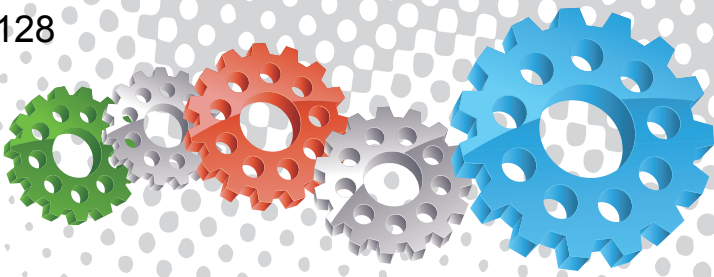
9 Inner Bush

10 Seat Gasket

11 Cast Iron / Powder Coated Body

12 32 mm (1-1/4") Full Flow Ports





## Assembly

Stock Code	Description	Weight
BAC-RC-PB-0276	1-1/4" Tandem NPT Valve Assembly	3.75 kg (8.27 lbs)

## Service Kits

Stock Code	Description	Include Items
BAC-RC-PB-0279	1-1/4" & 1-1/2" Tandem Valve Service Kit	2 4 5 x2 7 9 10 12 14 16 18
BAC-RC-0536-00	Tandem Valve 1-1/4" & 1-1/2" Repair Kit	2 6 7 10 11 12 x3 14 15 18 20 x4





## Parts List



Description	Qty	Description	Qty	Description	Qty
1 Cap	1	9 O-ring	1	17 Inner Bush	1
2 O-ring	1	10 O-ring	1	18 O-ring	1
3 Cover	1	11 Connecting Shaft	1	19 Body	1
4 Lock Nut	1	12 Flat Washer	1	20 Spring Washer	4
5 Flat Washer	2	13 Gasket Holder	1	21 Nut	4
6 Flat Washer	2	14 Rubber Gasket	1	22 Screw	4
7 Diaphragm	1	15 Retainer	1	23 Spring	1
8 Guide Bush	1	16 Lock Nut	1		



# 1-1/2" Tandem NPT Valve Assembly



## Product Features

The PanBlast™ 1-1/2" Tandem NPT Valve Assembly is a pilot operated, spring return diaphragm type valve for use with remote control systems on pressure hold and multiple outlet blast pots. The valve is normally located on the air pusher line to control the blasting air, and can be combined with an abrasive control valve to provide air blow down. The NPT configuration is compatible with most U.S. blasting equipment.

- ▶ Rugged, cast iron construction.
- ▶ Quick, easy dismantled for cleaning and maintenance.
- ▶ Service kit available.
- ▶ 38 mm (1-1/2") NPT threads.

## Common Applications

- ▶ Remote control for pressure hold blast pots.
- ▶ Multiple operator remote control.
- ▶ Air blow down for component cleanup.

## Complementary Products



AirStop Pneumatic Handle



Twinline Hose



AirStop II Pneumatic Handle



AirStop II Electric Handle



AirStop Electric Handle



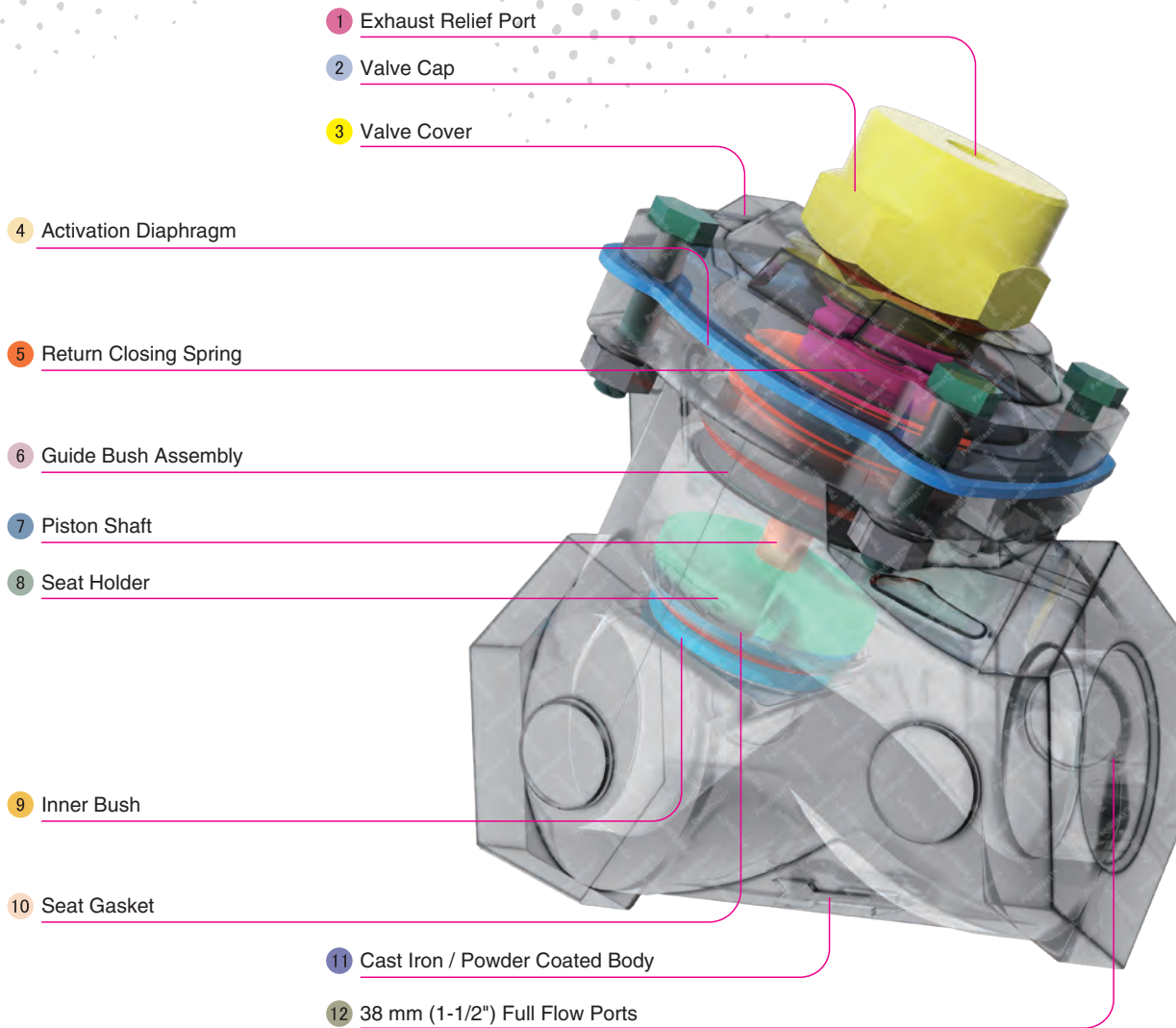
AirStop IV Pneumatic Handle



Exhaust Muffler



Pop Up Valves



## Component Highlights



1 Exhaust Relief Port

2 Valve Cap

3 Valve Cover

4 Activation Diaphragm

5 Return Closing Spring

6 Guide Bush Assembly

7 Piston Shaft

8 Seat Holder

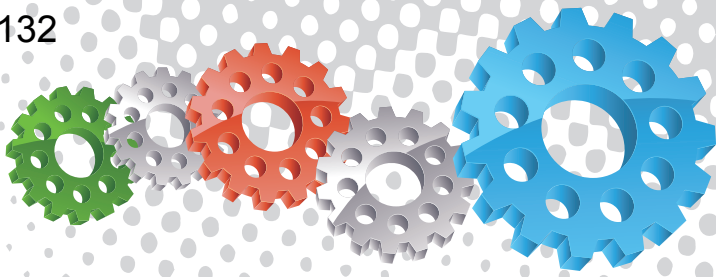
9 Inner Bush

10 Seat Gasket

11 Cast Iron / Powder Coated Body

12 38 mm (1-1/2") Full Flow Ports





## Assembly

Stock Code	Description	Weight
BAC-RC-PB-0277	1-1/2" Tandem NPT Valve Assembly	3.85 kg (8.49 lbs)

## Service Kits

Stock Code	Description	Include Items
BAC-RC-PB-0279	1-1/4" & 1-1/2" Tandem Valve Service Kit	2 4 5 x2 7 9 10 12 14 16 18
BAC-RC-0536-00	Tandem Valve 1-1/4" & 1-1/2" Repair Kit	2 6 7 10 11 12 x3 14 15 18 20 x4



## Parts List



Description	Qty	Description	Qty	Description	Qty
1 Cap	1	9 O-ring	1	17 Inner Bush	1
2 O-ring	1	10 O-ring	1	18 O-ring	1
3 Cover	1	11 Connecting Shaft	1	19 Body	1
4 Lock Nut	1	12 Flat Washer	1	20 Spring Washer	4
5 Flat Washer	2	13 Gasket Holder	1	21 Nut	4
6 Flat Washer	2	14 Rubber Gasket	1	22 Screw	4
7 Diaphragm	1	15 Retainer	1	23 Spring	1
8 Guide Bush	1	16 Lock Nut	1		



## Sola 10 NPT Inlet Valve Assembly



### Product Features

The PanBlast™ Sola 10 NPT Inlet Valve Assembly is an air actuated inlet control valve, designed for use in conjunction with the PanBlast™ HiFlo Exhaust Control Valve or similar device. The NPT configuration is compatible with most U.S. blasting equipment.

- ▶ Simple, rugged construction.
- ▶ Normally closed operation.
- ▶ Interchangeable with OEM valves.
- ▶ Quick, easy disassembly.
- ▶ Service kits available.
- ▶ 25 mm (1") NPT threaded connection.

### Common Applications

- ▶ Remote supply air control for medium capacity blast pots
- ▶ Replacement and upgrade of OEM valves.

## Complementary Products



HiFlo Exhaust Valve



AbraFlo Abrasive Trap



QuikStop IIS Pneumatic Handle



Moisture Separator



AirFlo Pneumatic Handle



AirFlo Electric Handle

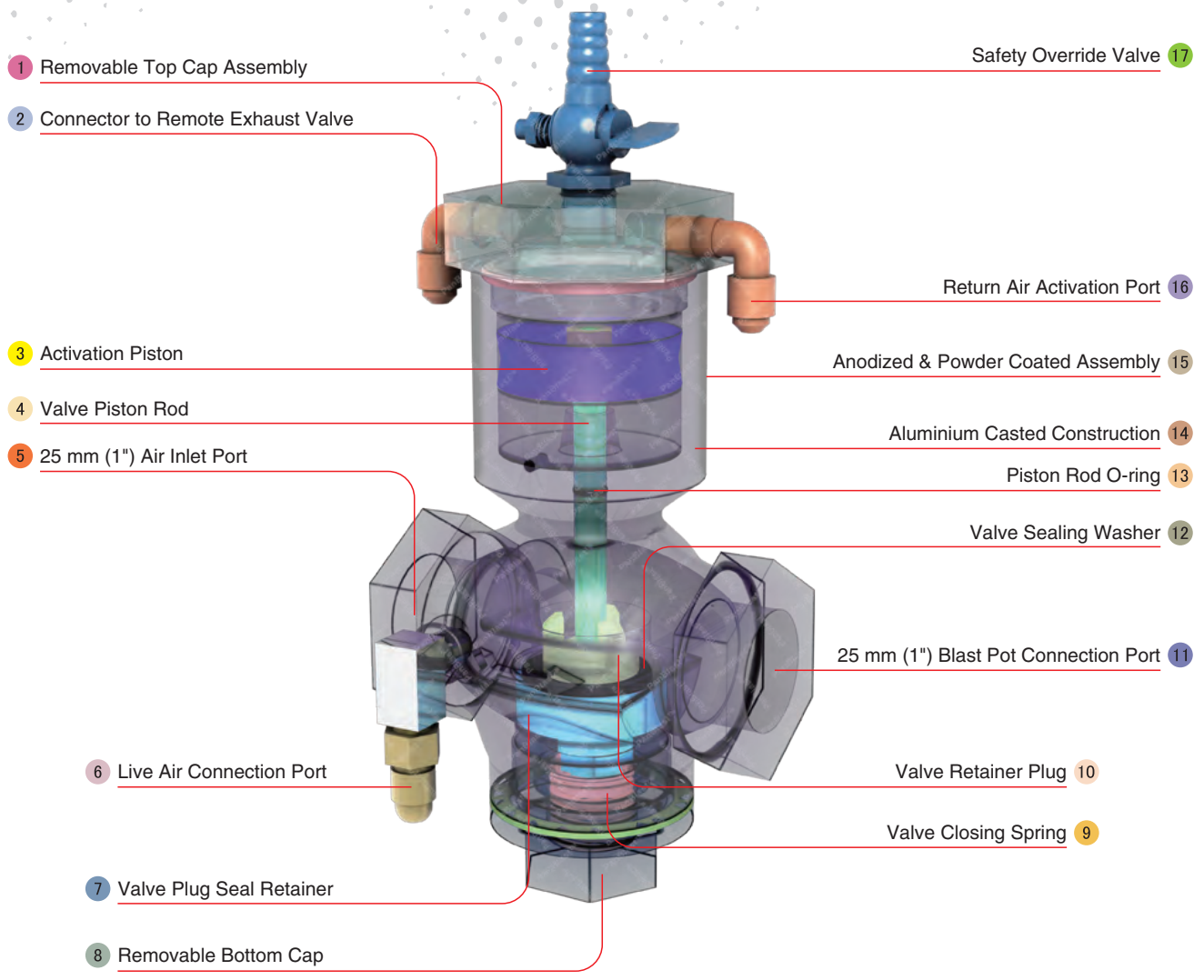
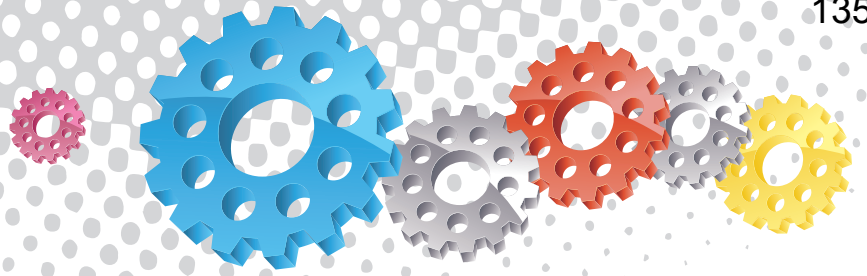


Twinline Hose



Pop Up Valves

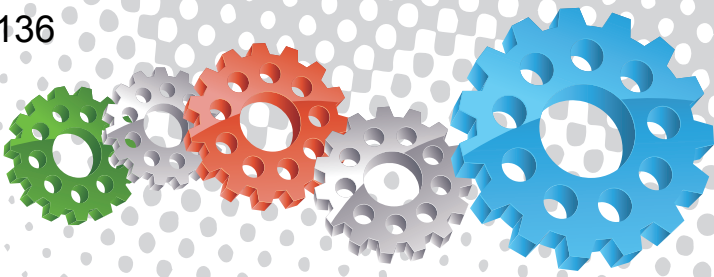




## Component Highlights



- 1 Removable Top Cap Assembly
- 2 Connector to Remote Exhaust Valve
- 3 Activation Piston
- 4 Valve Piston Rod
- 5 25 mm (1") Air Inlet Port
- 6 Live Air Connection Port
- 7 Valve Plug Seal Retainer
- 8 Removable Bottom Cap
- 9 Valve Closing Spring
- 10 Valve Retainer Plug
- 11 25 mm (1") Blast Pot Connection Port
- 12 Valve Sealing Washer
- 13 Piston Rod O-ring
- 14 Aluminium Casted Construction
- 15 Anodized & Powder Coated Assembly
- 16 Return Air Activation Port
- 17 Safety Override Valve



## Assembly

Stock Code	Description	Weight
BAC-RC-0208-03	Sola10 NPT Inlet Valve Assembly	1.03 kg (2.27 lbs)

## Service Kit

Stock Code	Description	Include Items
BAC-RC-0257-01	Sola10 Inlet Service Kit	2 3 5 6 10 14



## Parts List



Description	Qty	Description	Qty	Description	Qty
1 Bottom Cap	1	7 NPT/UNF Nipple - Restricted	1	13 Nut	1
2 Bottom Cap Gasket	1	8 Elbow -NPT	1	14 O-ring	1
3 Inner Spring	1	9 Body	1	15 Cap	1
4 Valve Plug	1	10 O-ring	1	16 Elbow	2
5 Plug Washer	1	11 Piston Rod	1	17 Pet Cock - NPT	1
6 Retainer Plug	1	12 Rubber Piston	1		





## Sola 30 NPT Inlet Valve Assembly



### Product Features

The PanBlast™ Sola 30 NPT Inlet Valve Assembly is an air actuated inlet control valve, designed for use in conjunction with the PanBlast™ HiFlo Exhaust Control Valve or similar device. The NPT configuration is compatible with most U.S. blasting equipment.

- ▶ Simple, rugged construction.
- ▶ Normally closed operation.
- ▶ Interchangeable with OEM valves.
- ▶ Quick, easy disassembly.
- ▶ Service kits available.
- ▶ 38 mm (1-1/2") NPT threaded connection.

### Common Applications

- ▶ Remote supply air control for medium capacity blast pots
- ▶ Replacement and upgrade of OEM valves.

## Complementary Products



HiFlo Exhaust Valve



AbraFlo Abrasive Trap



QuikStop IIS Pneumatic Handle



Moisture Separator



AirFlo Pneumatic Handle



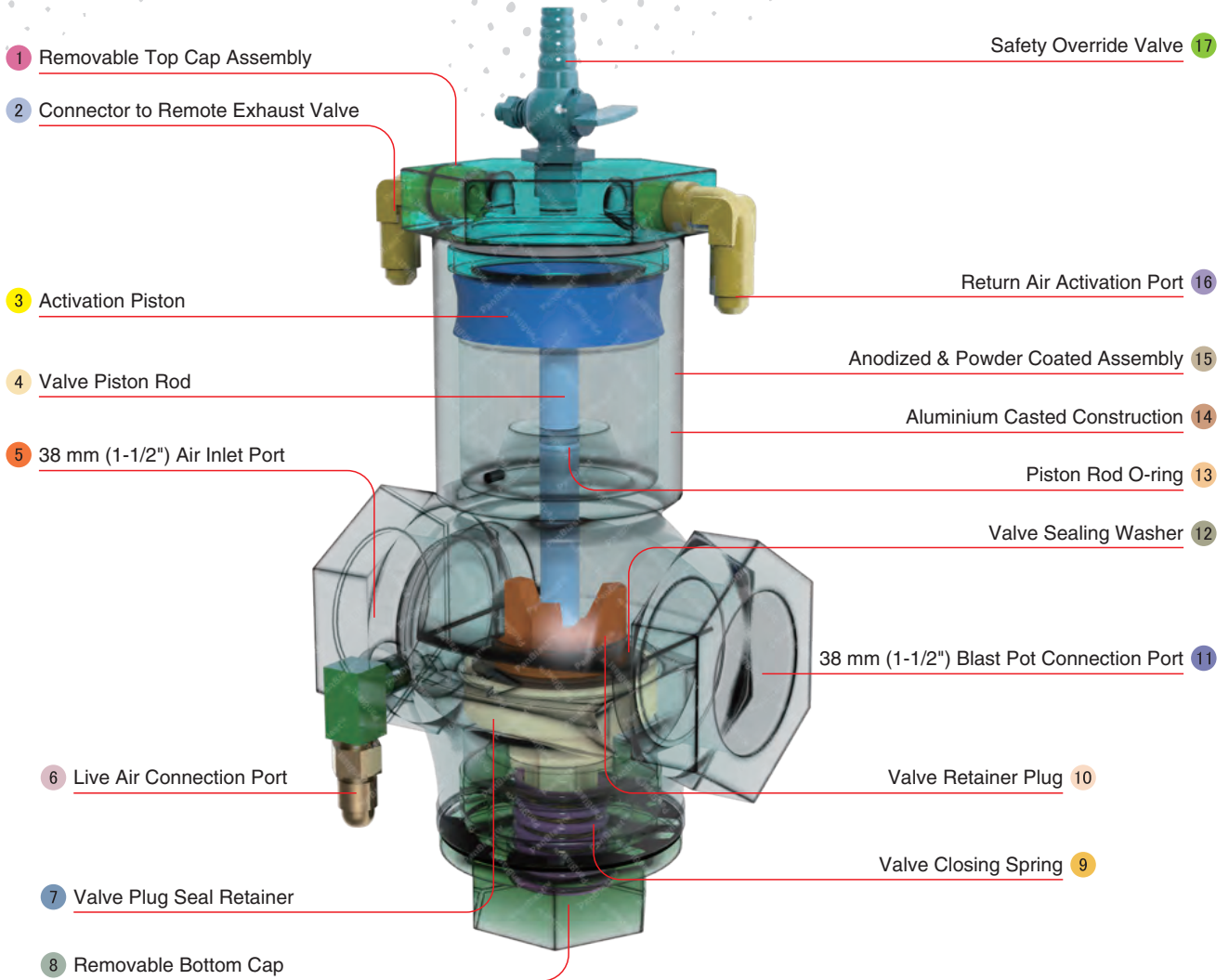
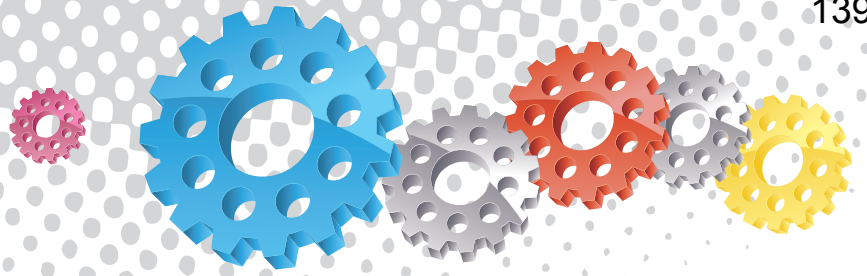
AirFlo Electric Handle



Twinline Hose



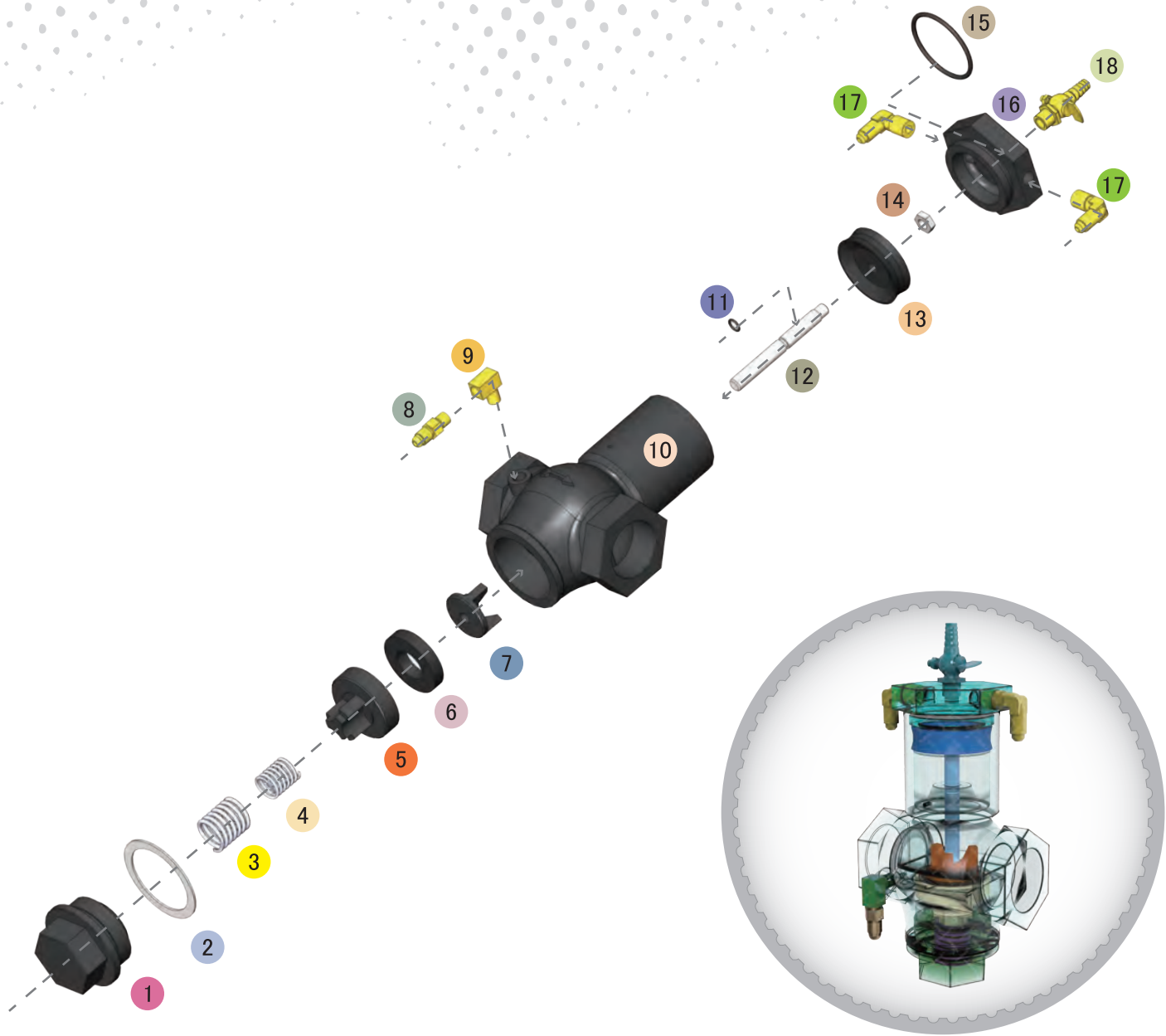
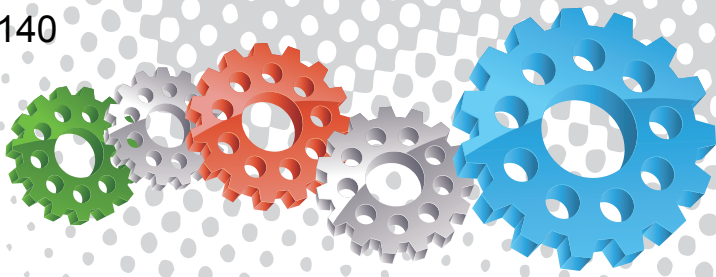
Pop Up Valves



## Component Highlights



- |                                     |   |                                      |
|-------------------------------------|---|--------------------------------------|
| 1 Removable Top Cap Assembly        | 7 Valve Plug Seal Retainer                  | 13 Piston Rod O-ring                 |
| 2 Connector to Remote Exhaust Valve | 8 Removable Bottom Cap                      | 14 Aluminium Casted Construction     |
| 3 Activation Piston                 | 9 Valve Closing Spring                      | 15 Anodized & Powder Coated Assembly |
| 4 Valve Piston Rod                  | 10 Valve Retainer Plug                      | 16 Return Air Activation Port        |
| 5 38 mm (1-1/2") Air Inlet Port     | 11 38 mm (1-1/2") Blast Pot Connection Port | 17 Safety Override Valve             |
| 6 Live Air Connection Port          | 12 Valve Sealing Washer                     |                                      |



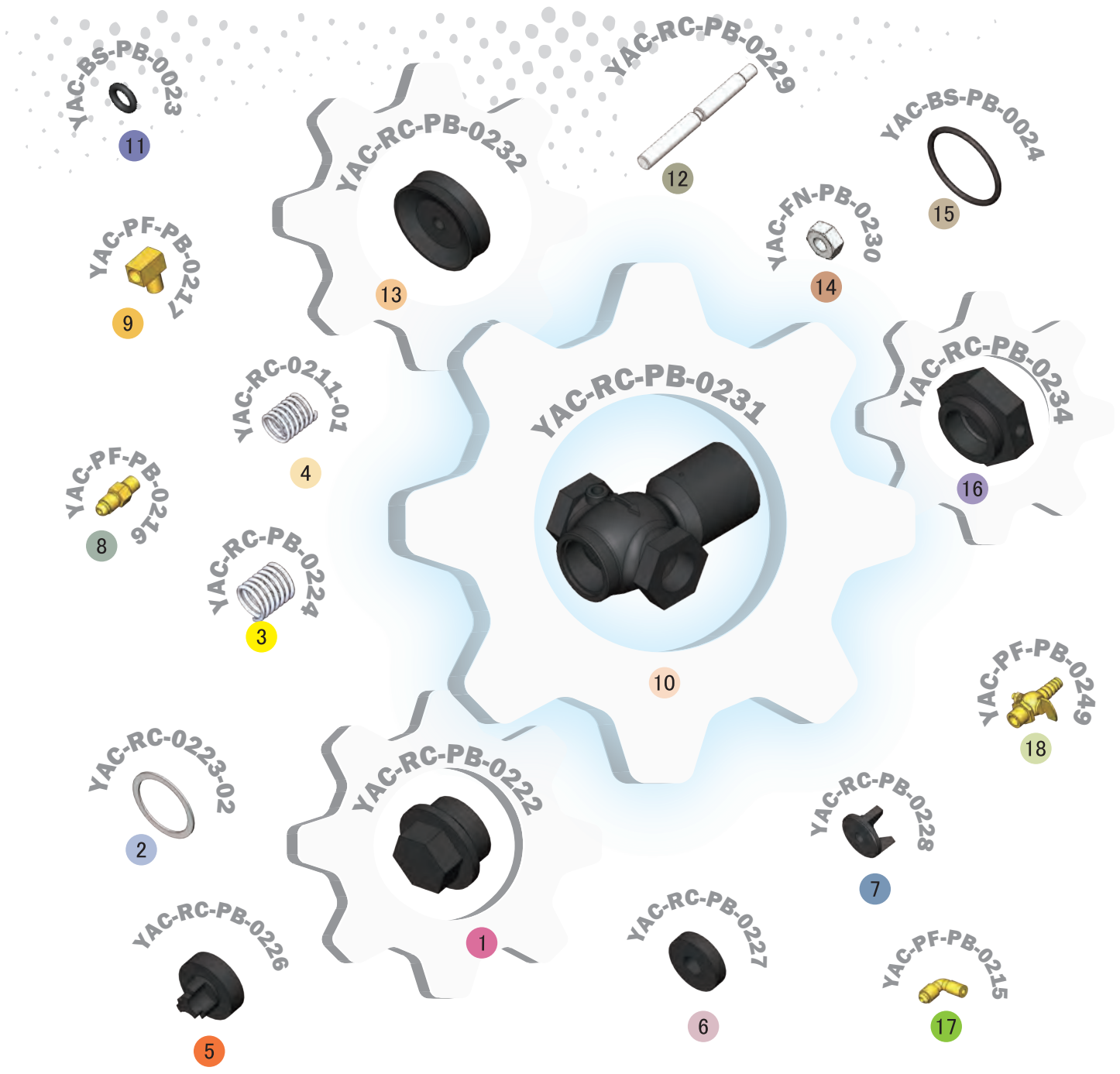
## Assembly

Stock Code	Description	Weight
BAC-RC-PB-0221	Sola 30 NPT Inlet Valve Assembly	1.96 kg (4.31 lbs)

## Service Kits

Stock Code	Description	Include Items
BAC-RC-PB-0258	Sola 30 NPT Inlet Valve Service Kit	2 3 4 6 7 11 15
BAC-RC-PB-0355	Sola 30 Piston Kit	11 12 13 14





## Parts List



Description	Qty	Description	Qty	Description	Qty
1 Bottom Cap	1	7 Retainer Plug	1	13 Rubber Piston	1
2 Bottom Cap Gasket	1	8 NPT/UNF Nipple - Restricted	1	14 Nut	1
3 Outer Spring	1	9 Elbow - NPT	1	15 O-ring	1
4 Inner Spring	1	10 Body	1	16 Cap	1
5 Valve Plug	1	11 O-ring	1	17 Elbow	2
6 Plug Washer	1	12 Piston Rod	1	18 Pet Cock - NPT	1



# Helix 100 Inlet Valve Assembly



## Product Features

The PanBlast™ Helix 100 Inlet Valve Assembly is an air actuated, control valve, used to control blast pot supply air and designed to be used in conjunction with the Helix 50 Exhaust Control Valve or similar. The BSP configuration is compatible with most non-U.S. pressure blasting equipment.

- ▶ Fast, efficient operation.
- ▶ Anodized internal parts.
- ▶ Powder coated external parts.
- ▶ Parts interchangeable with OEM RMS/RCV style valves.
- ▶ 32 mm (1-1/4") BSP threads.

## Common Applications

- ▶ Blast pot control for blast room, yard or on site operations.
- ▶ OEM valve replacement.

## Complementary Products



Helix 50 Outlet Valve



Diaphragm Dump Valve



QuikStop IIS Pneumatic Handle



Pop Up Valves



AirFlo Pneumatic Handle



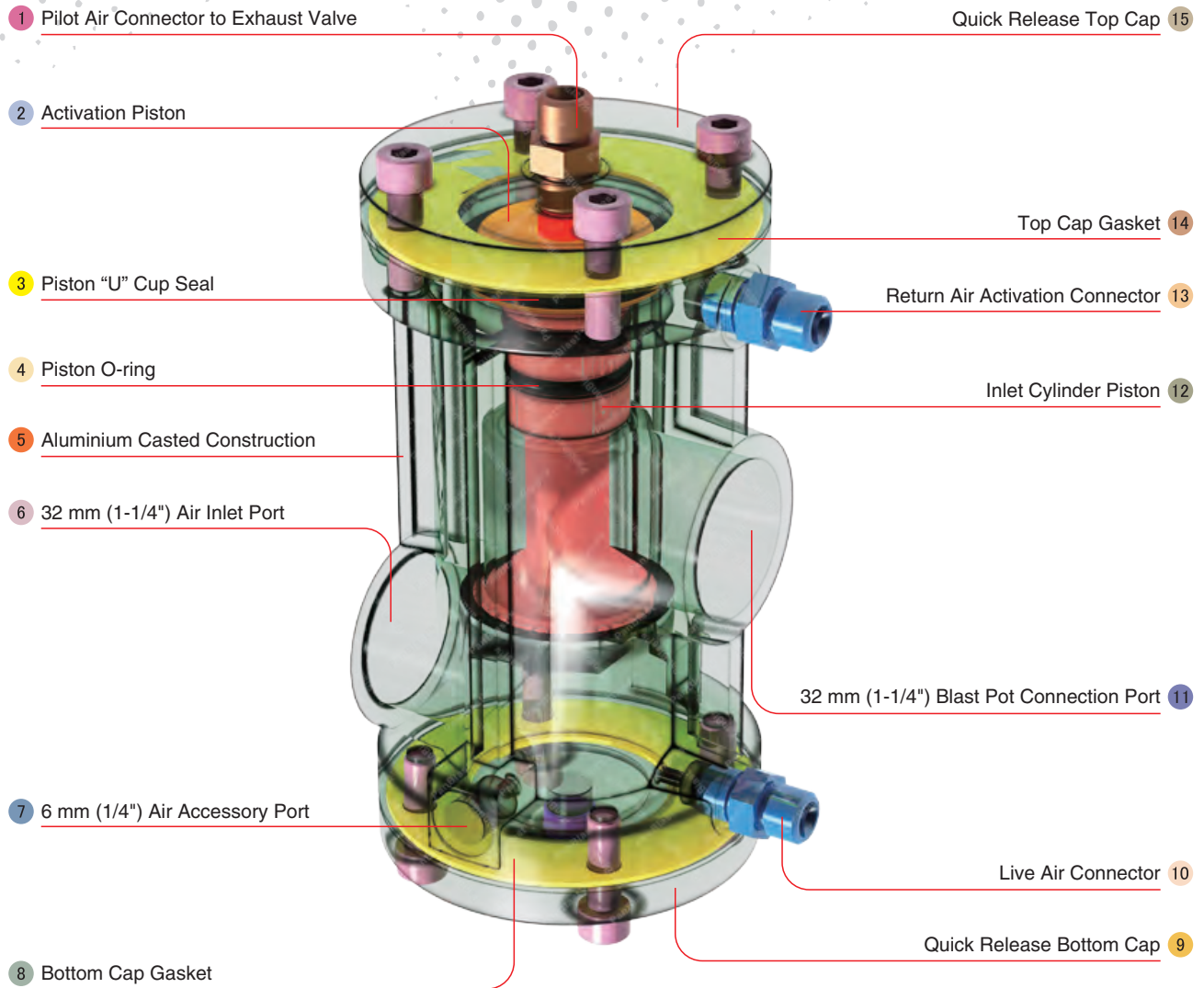
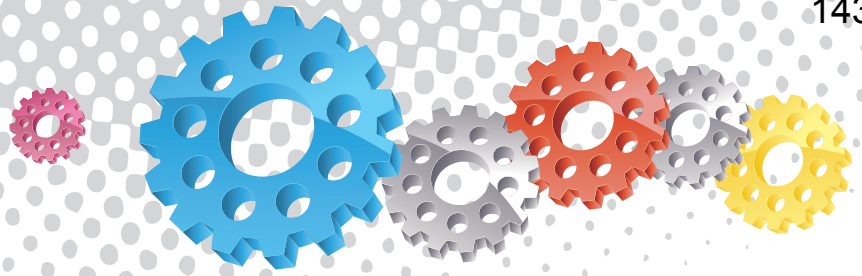
AirFlo Electric Handle



Twinline Hose



Exhaust Muffler

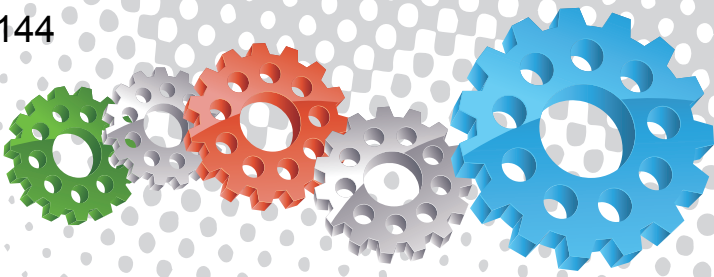


## Component Highlights



- 1 Pilot Air Connector to Exhaust Valve
- 2 Activation Piston
- 3 Piston "U" Cup Seal
- 4 Piston O-ring
- 5 Aluminium Casted Construction
- 6 32 mm (1-1/4") Air Inlet Port
- 7 6 mm (1/4") Air Accessory Port
- 8 Bottom Cap Gasket
- 9 Quick Release Bottom Cap
- 10 Live Air Connector
- 11 32 mm (1-1/4") Blast Pot Connection Port
- 12 Inlet Cylinder Piston
- 13 Return Air Activation Connector
- 14 Top Cap Gasket
- 15 Quick Release Top Cap





## Assembly

Stock Code	Description	Weight
BAC-RC-PB-0305	Helix 100 Inlet Valve Assembly	2 kg (4.41 lbs)

## Service Kits

Stock Code	Description	Include Items
YAC-RC-PB-0335	End Cap Kit	1 3 4
BAC-RC-0477-00	Helix 100 Valve Seal Kit	4 x2 6 9 x2



## Parts List



Description	Qty	Description	Qty	Description	Qty
1 Nipple	3	5 Screw	1	9 O-ring	2
2 Screw	8	6 Piston U-Seal	1	10 Inlet Piston	1
3 Cylinder Housing Cap	2	7 Piston	1	11 Plug	1
4 Cap Gasket	2	8 Housing	1		



# Helix 100 NPT Inlet Valve Assembly



## Complementary Products



Helix 50 NPT Outlet Valve



Diaphragm Dump Valve



QuikStop IIS Pneumatic Handle



Pop Up Valves



AirFlo Pneumatic Handle



AirFlo Electric Handle



Twinline Hose



Exhaust Muffler



## Product Features

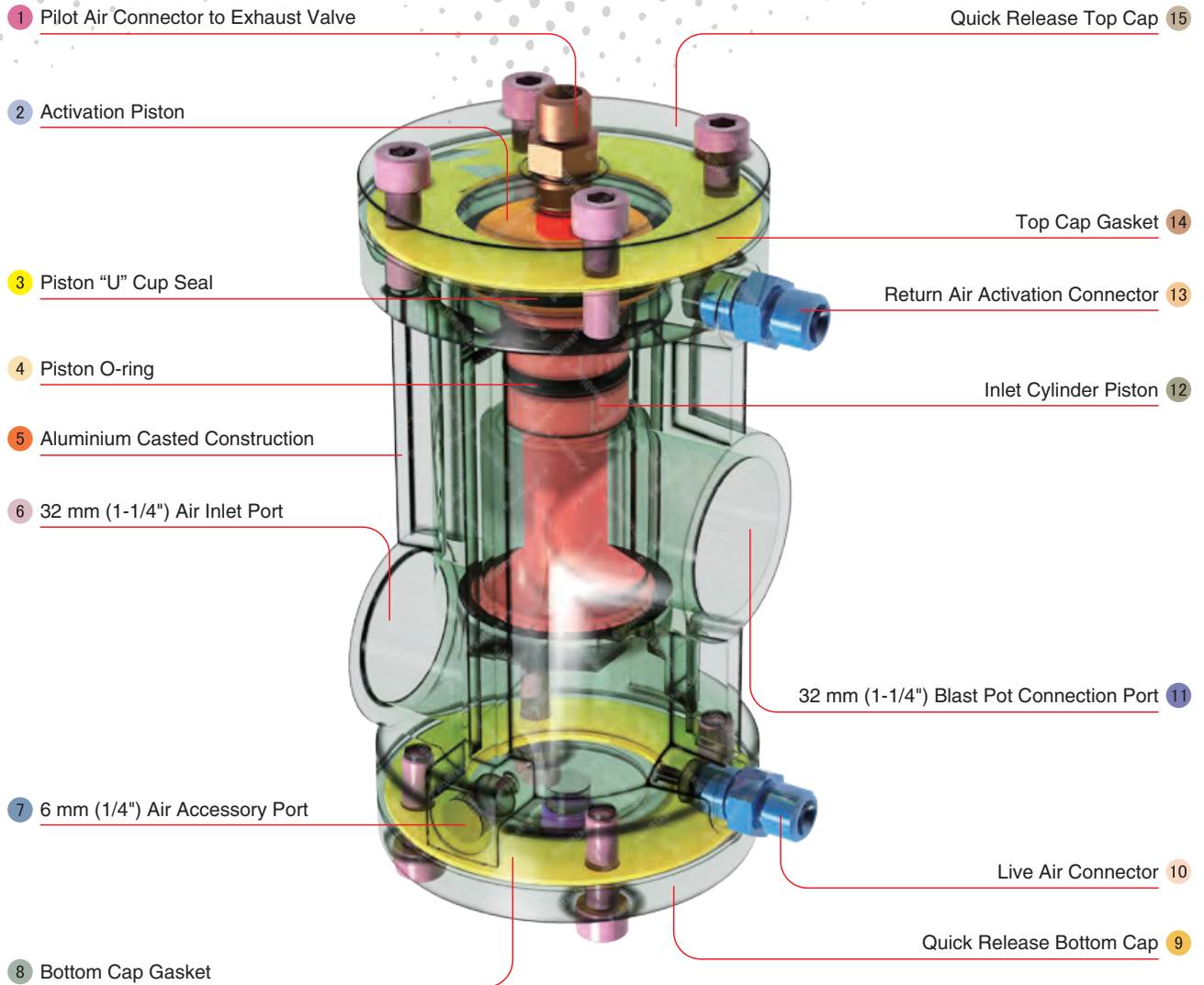
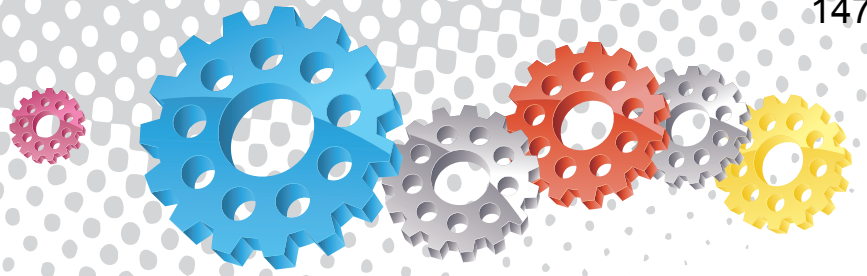
The PanBlast™ Helix 100 NPT Inlet Valve Assembly is an air actuated, control valve, used to control the blast pot supply air and designed to be used in conjunction with the Helix 50 NPT Outlet or Exhaust Control Valve or similar. The NPT configuration is compatible with most U.S. pressure blasting equipment.

- ▶ Fast, efficient operation.
- ▶ Anodized internal parts.
- ▶ Powder coated external parts.
- ▶ Parts interchangeable with OEM RMS/RCV style valves.
- ▶ 32 mm (1-1/4") NPT threads.

## Common Applications

- ▶ Blast pot control for blast room, yard or on site operations.
- ▶ OEM valve replacement.

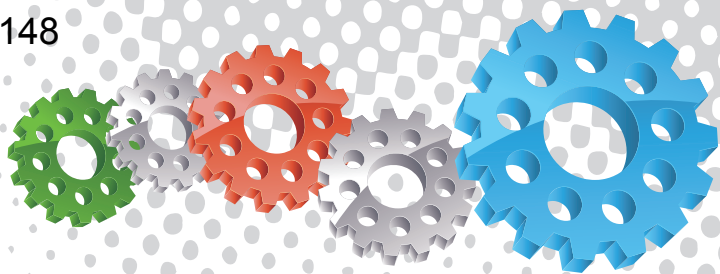




## Component Highlights



- 1 Pilot Air Connector to Exhaust Valve
- 2 Activation Piston
- 3 Piston "U" Cup Seal
- 4 Piston O-ring
- 5 Aluminium Casted Construction
- 6 32 mm (1-1/4") Air Inlet Port
- 7 6 mm (1/4") Air Accessory Port
- 8 Bottom Cap Gasket
- 9 Quick Release Bottom Cap
- 10 Live Air Connector
- 11 32 mm (1-1/4") Blast Pot Connection Port
- 12 Inlet Cylinder Piston
- 13 Return Air Activation Connector
- 14 Top Cap Gasket
- 15 Quick Release Top Cap



## Assembly

Stock Code	Description	Weight
BAC-RC-PB-0309	Helix 100 NPT Inlet Valve Assembly	2 kg (4.41 lbs)

## Service Kits

Stock Code	Description	Include Items
YAC-RC-PB-0336	End Cap Kit NPT	1 3 4
BAC-RC-0477-00	Helix 100 Valve Seal Kit	4 x2 6 9 x2



## Parts List



Description	Qty	Description	Qty	Description	Qty
1 Nipple - NPT	3	5 Screw	1	9 O-ring	2
2 Screw	8	6 Piston U-Seal	1	10 Inlet Piston	1
3 Cylinder Housing Cap	2	7 Piston	1	11 Plug - NPT	1
4 Cap Gasket	2	8 Housing - NPT	1		



Архангельск (8182)63-90-72  
Астана (7172)727-132  
Астрахань (8512)99-46-04  
Барнаул (3852)73-04-60  
Белгород (4722)40-23-64  
Брянск (4832)59-03-52  
Владивосток (423)249-28-31  
Волгоград (844)278-03-48  
Вологда (8172)26-41-59  
Воронеж (473)204-51-73  
Екатеринбург (343)384-55-89  
Иваново (4932)77-34-06

Ижевск (3412)26-03-58  
Иркутск (395)279-98-46  
Казань (843)206-01-48  
Калининград (4012)72-03-81  
Калуга (4842)92-23-67  
Кемерово (3842)65-04-62  
Киров (8332)68-02-04  
Краснодар (861)203-40-90  
Красноярск (391)204-63-61  
Курск (4712)77-13-04  
Липецк (4742)52-20-81

Киргизия (996)312-96-26-47

Магнитогорск (3519)55-03-13  
Москва (495)268-04-70  
Мурманск (8152)59-64-93  
Набережные Челны (8552)20-53-41  
Нижний Новгород (831)429-08-12  
Новокузнецк (3843)20-46-81  
Новосибирск (383)227-86-73  
Омск (3812)21-46-40  
Орел (4862)44-53-42  
Оренбург (3532)37-68-04  
Пенза (8412)22-31-16

Россия (495)268-04-70

Пермь (342)205-81-47  
Ростов-на-Дону (863)308-18-15  
Рязань (4912)46-61-64  
Самара (846)206-03-16  
Санкт-Петербург (812)309-46-40  
Саратов (845)249-38-78  
Севастополь (8692)22-31-93  
Симферополь (3652)67-13-56  
Смоленск (4812)29-41-54  
Сочи (862)225-72-31  
Ставрополь (8652)20-65-13

Казахстан (772)734-952-31

Сургут (3462)77-98-35  
Тверь (4822)63-31-35  
Томск (3822)98-41-53  
Тула (4872)74-02-29  
Тюмень (3452)66-21-18  
Ульяновск (8422)24-23-59  
Уфа (347)229-48-12  
Хабаровск (4212)92-98-04  
Челябинск (351)202-03-61  
Череповец (8202)49-02-64  
Ярославль (4852)69-52-93

[www.panblast.nt-rt.ru](http://www.panblast.nt-rt.ru) | | [pav@nt-rt.ru](mailto:pav@nt-rt.ru)