

Архангельск (8182)63-90-72
Астана (7172)727-132
Астрахань (8512)99-46-04
Барнаул (3852)73-04-60
Белгород (4722)40-23-64
Брянск (4832)59-03-52
Владивосток (423)249-28-31
Волгоград (844)278-03-48
Вологда (8172)26-41-59
Воронеж (473)204-51-73
Екатеринбург (343)384-55-89
Иваново (4932)77-34-06

Ижевск (3412)26-03-58
Иркутск (395)279-98-46
Казань (843)206-01-48
Калининград (4012)72-03-81
Калуга (4842)92-23-67
Кемерово (3842)65-04-62
Киров (8332)68-02-04
Краснодар (861)203-40-90
Красноярск (391)204-63-61
Курск (4712)77-13-04
Липецк (4742)52-20-81

Киргизия (996)312-96-26-47

Магнитогорск (3519)55-03-13
Москва (495)268-04-70
Мурманск (8152)59-64-93
Набережные Челны (8552)20-53-41
Нижний Новгород (831)429-08-12
Новокузнецк (3843)20-46-81
Новосибирск (383)227-86-73
Омск (3812)21-46-40
Орел (4862)44-53-42
Оренбург (3532)37-68-04
Пенза (8412)22-31-16

Россия (495)268-04-70

Пермь (342)205-81-47
Ростов-на-Дону (863)308-18-15
Рязань (4912)46-61-64
Самара (846)206-03-16
Санкт-Петербург (812)309-46-40
Саратов (845)249-38-78
Севастополь (8692)22-31-93
Симферополь (3652)67-13-56
Смоленск (4812)29-41-54
Сочи (862)225-72-31
Ставрополь (8652)20-65-13

Казахстан (772)734-952-31

Сургут (3462)77-98-35
Тверь (4822)63-31-35
Томск (3822)98-41-53
Тула (4872)74-02-29
Тюмень (3452)66-21-18
Ульяновск (8422)24-23-59
Уфа (347)229-48-12
Хабаровск (4212)92-98-04
Челябинск (351)202-03-61
Череповец (8202)49-02-64
Ярославль (4852)69-52-93

www.panblast.nt-rt.ru | | pav@nt-rt.ru

Технические характеристики на пережимные клапаны КОМПАНИИ **PanBlast**



Pinch Valve NPT Assembly



Product Features

The PanBlast™ Pinch Valve NPT is designed to allow an operator to halt the blasting process without depressurizing the blast pot by isolating flow within the blast hose. The pinch operation provides a simple method of ceasing the blasting operation at the nozzle. The NPT configuration is compatible with most U.S. blasting equipment.

- ▶ Simple piston operation.
- ▶ Cost effective control.
- ▶ Easily activated by a deadman control handle.
- ▶ Plunger guide tubes for consistent travel.
- ▶ NPT supply air connection.

Common Applications

- ▶ Simple, temporary blasting shutoff/startup at the blast nozzle.
- ▶ Economical flow control for blasting operations.

Complementary Products



AirFlo Pneumatic Handle



Blast Hoses



QuikStop IIS Pneumatic Handle



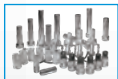
Couplings & Nozzle Holders



AirFlo Electric Handle



Whip Check Cables

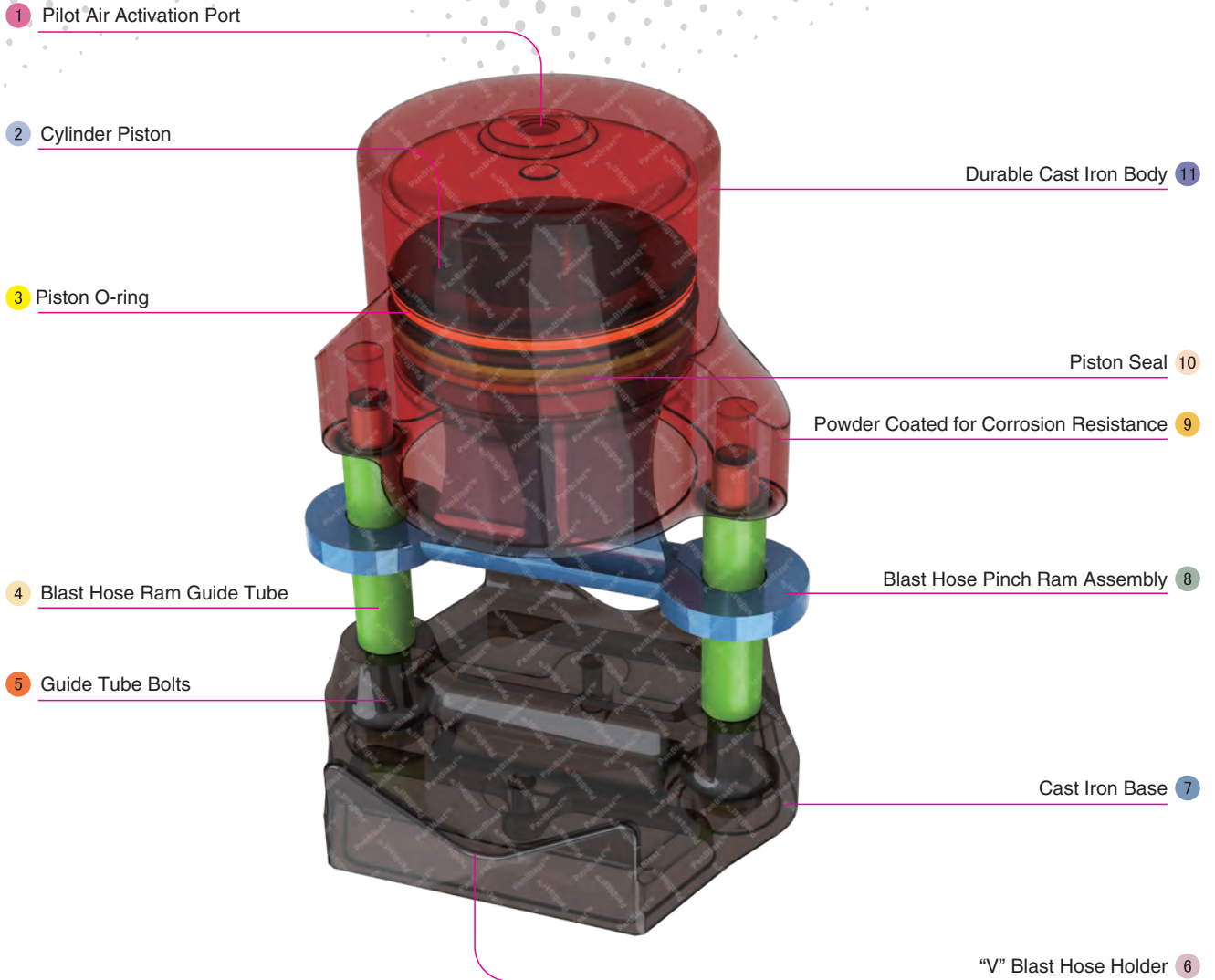
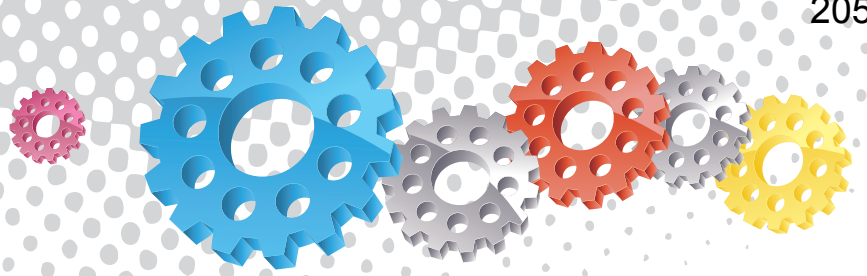


Blast Nozzles



Enviro Valve

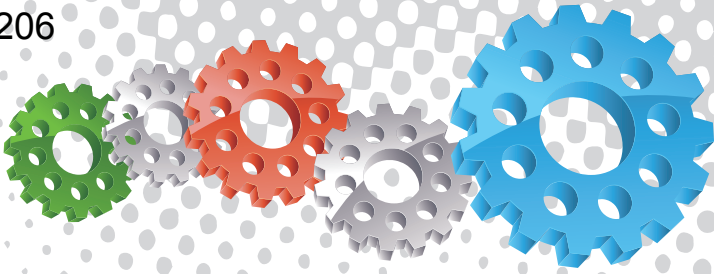
Note:
The Pinch NPT Valve is not a fail-safe blast pot control system and should not be used for unattended shutoff.



Component Highlights



- | | | |
|-----------------------------|---------------------------------|--|
| 1 Pilot Air Activation Port | 5 Guide Tube Bolts | 9 Powder Coated for Corrosion Resistance |
| 2 Cylinder Piston | 6 "V" Blast Hose Holder | 10 Piston Seal |
| 3 Piston O-ring | 7 Cast Iron Base | 11 Durable Cast Iron Body |
| 4 Blast Hose Ram Guide Tube | 8 Blast Hose Pinch Ram Assembly | |



Assembly

Stock Code
BAC-RC-0188-02

Description
Pinch Valve Assembly

Weight
5.15 kg (11.33 lbs)



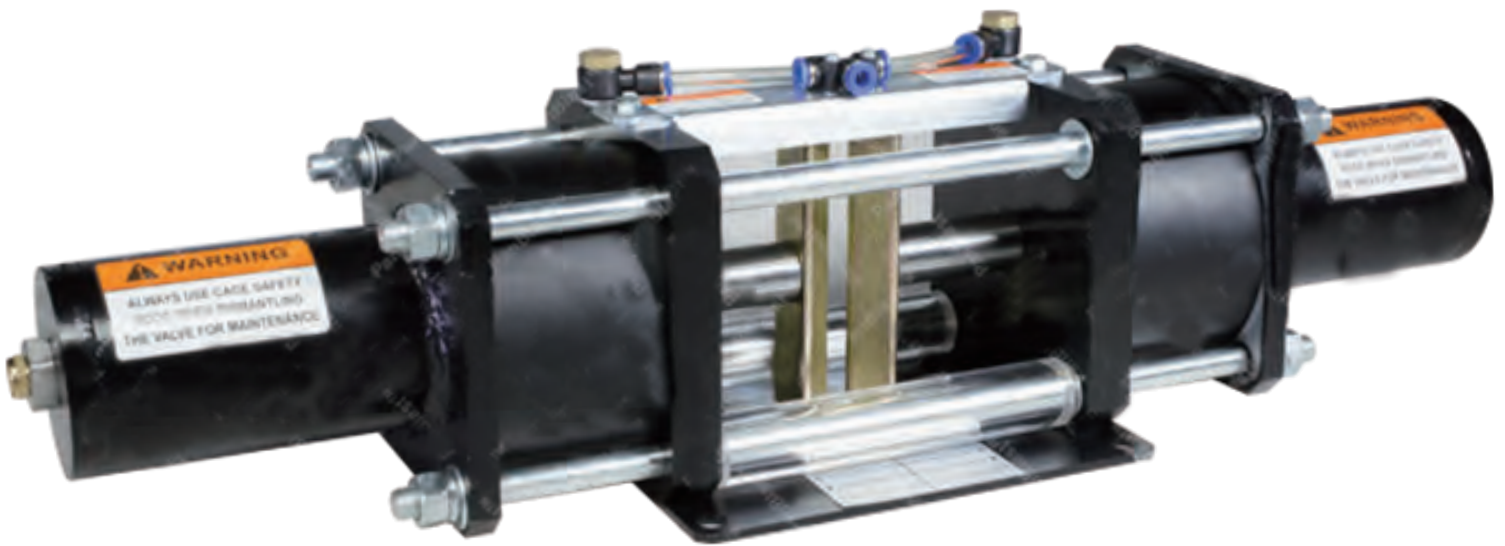
Parts List



Description	Qty	Description	Qty	Description	Qty
1 Body	1	4 Seal	1	7 Flat Washer	2
2 Piston	1	5 Guide Tube	2	8 Hex Head Bolt	2
3 O-ring	1	6 Base	1		



Safe-T-Pinch Valve Assembly



Complementary Products



AirFlo Pneumatic Handle



Blast Hoses



QuikStop IIS Pneumatic Handle



AirStop II Electric Handle



Fina II Valve



Tandem Inlet Valve



Electric Remote Systems



Kombi II Remote Valve



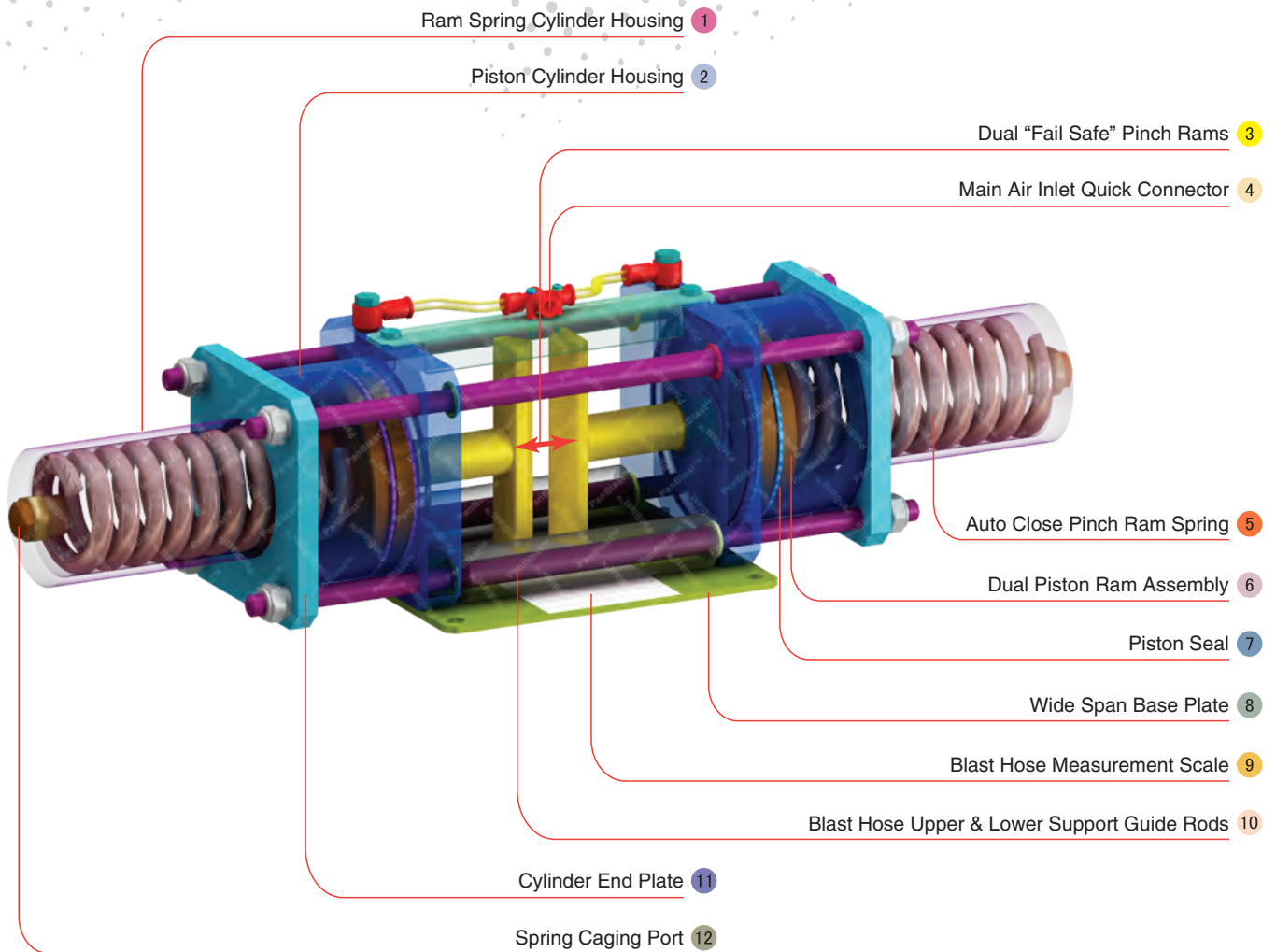
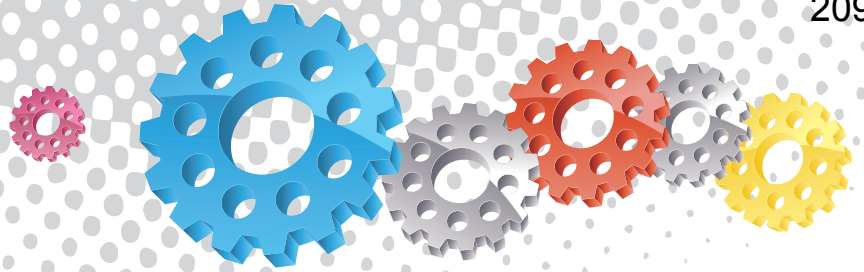
Product Features

The PanBlast™ Safe-T-Pinch Valve is a pneumatically operated normally closed horizontally configured pinch valve, combining dual pinch rams to pinch the blast hose via a piloted air signal to start and stop the abrasive blasting process.

- ▶ Fail safe normally closed system.
- ▶ Wear dispersion dual pinch rams.
- ▶ Accommodates all blast hose sizes.
- ▶ Encapsulated pinch ram chamber.

Common Applications

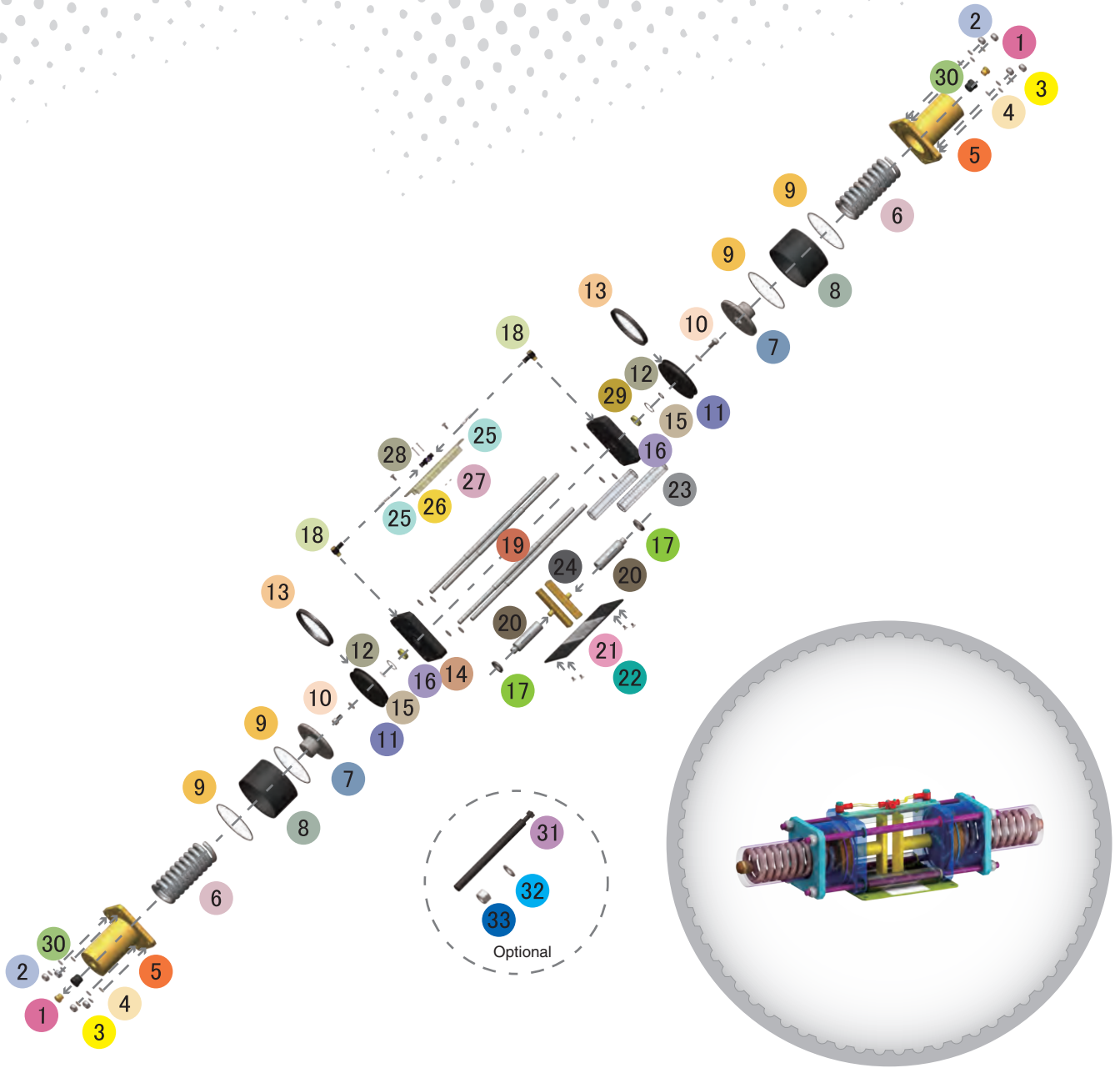
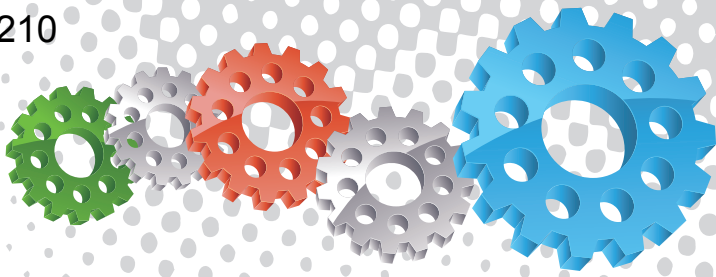
- ▶ General abrasive blasting operations.
- ▶ Multi-operator large site blasting projects.
- ▶ Shipyard manufacturing & repair yards.
- ▶ Oil & gas plant shut down maintenance.



Component Highlights



- | | | |
|----------------------------------|-------------------------------|--|
| 1 Ram Spring Cylinder Housing | 5 Auto Close Pinch Ram Spring | 9 Blast Hose Measurement Scale |
| 2 Piston Cylinder Housing | 6 Dual Piston Ram Assembly | 10 Blast Hose Upper & Lower Support Guide Rods |
| 3 Dual "Fail Safe" Pinch Rams | 7 Piston Seal | 11 Cylinder End Plate |
| 4 Main Air Inlet Quick Connector | 8 Wide Span Base Plate | 12 Spring Caging Port |



Assembly

Stock Code	Description	Weight
BAC-RC-0565-00	Safe-T-Pinch Valve Assembly	19 kg (41.89 lbs)

Optional Accessories

Stock Code	Description	Include Items
YAC-RC-0588-00	Spring Cage Stud	
YAC-FN-0396-00	Flat Washer	
YAC-FN-0395-00	Nut	
YAC-RC-0598-00	Spring Maintenance Kit	x2 x2 x2



Parts List



Description	Qty	Description	Qty	Description	Qty
1 1/4" Brass Filter	2	11 Piston	2	21 Support Plate	1
2 Nut	8	12 O-ring	2	22 Label-Scale Sticker	2
3 Spring Washer	8	13 Piston U Seal	2	23 Acrylic Tube	2
4 Flat Washer	16	14 Mount Plate A	1	24 Ram	2
5 End Cap	2	15 Circlip	2	25 6 mm OD x 3.5 mm ID Air Tube	0.2 m
6 Outer Spring	2	16 Guide Bush	2	26 Guide Plate	1
7 Spring Retainer	2	17 Shaft Dust Seal	2	27 Lock Nut	2
8 Cylinder	2	18 1/4" Elbow Tube Connector SPH1/4-02	2	28 6 mm 'T' Type 3-Ways Tube Connector SPE6	1
9 O-ring	4	19 Retain Bar	4	29 Mount Plate B	1
10 Screw	2	20 Shaft	2	30 Reducing Bush	2

Архангельск (8182)63-90-72
Астана (7172)727-132
Астрахань (8512)99-46-04
Барнаул (3852)73-04-60
Белгород (4722)40-23-64
Брянск (4832)59-03-52
Владивосток (423)249-28-31
Волгоград (844)278-03-48
Вологда (8172)26-41-59
Воронеж (473)204-51-73
Екатеринбург (343)384-55-89
Иваново (4932)77-34-06

Ижевск (3412)26-03-58
Иркутск (395)279-98-46
Казань (843)206-01-48
Калининград (4012)72-03-81
Калуга (4842)92-23-67
Кемерово (3842)65-04-62
Киров (8332)68-02-04
Краснодар (861)203-40-90
Красноярск (391)204-63-61
Курск (4712)77-13-04
Липецк (4742)52-20-81

Киргизия (996)312-96-26-47

Магнитогорск (3519)55-03-13
Москва (495)268-04-70
Мурманск (8152)59-64-93
Набережные Челны (8552)20-53-41
Нижний Новгород (831)429-08-12
Новокузнецк (3843)20-46-81
Новосибирск (383)227-86-73
Омск (3812)21-46-40
Орел (4862)44-53-42
Оренбург (3532)37-68-04
Пенза (8412)22-31-16

Россия (495)268-04-70

Пермь (342)205-81-47
Ростов-на-Дону (863)308-18-15
Рязань (4912)46-61-64
Самара (846)206-03-16
Санкт-Петербург (812)309-46-40
Саратов (845)249-38-78
Севастополь (8692)22-31-93
Симферополь (3652)67-13-56
Смоленск (4812)29-41-54
Сочи (862)225-72-31
Ставрополь (8652)20-65-13

Казахстан (772)734-952-31

Сургут (3462)77-98-35
Тверь (4822)63-31-35
Томск (3822)98-41-53
Тула (4872)74-02-29
Тюмень (3452)66-21-18
Ульяновск (8422)24-23-59
Уфа (347)229-48-12
Хабаровск (4212)92-98-04
Челябинск (351)202-03-61
Череповец (8202)49-02-64
Ярославль (4852)69-52-93

www.panblast.nt-rt.ru | | pav@nt-rt.ru