

Архангельск (8182)63-90-72
Астана (7172)727-132
Астрахань (8512)99-46-04
Барнаул (3852)73-04-60
Белгород (4722)40-23-64
Брянск (4832)59-03-52
Владивосток (423)249-28-31
Волгоград (844)278-03-48
Вологда (8172)26-41-59
Воронеж (473)204-51-73
Екатеринбург (343)384-55-89
Иваново (4932)77-34-06

Ижевск (3412)26-03-58
Иркутск (395)279-98-46
Казань (843)206-01-48
Калининград (4012)72-03-81
Калуга (4842)92-23-67
Кемерово (3842)65-04-62
Киров (8332)68-02-04
Краснодар (861)203-40-90
Красноярск (391)204-63-61
Курск (4712)77-13-04
Липецк (4742)52-20-81

Киргизия (996)312-96-26-47

Магнитогорск (3519)55-03-13
Москва (495)268-04-70
Мурманск (8152)59-64-93
Набережные Челны (8552)20-53-41
Нижегород (831)429-08-12
Новокузнецк (3843)20-46-81
Новосибирск (383)227-86-73
Омск (3812)21-46-40
Орел (4862)44-53-42
Оренбург (3532)37-68-04
Пенза (8412)22-31-16

Россия (495)268-04-70

Пермь (342)205-81-47
Ростов-на-Дону (863)308-18-15
Рязань (4912)46-61-64
Самара (846)206-03-16
Санкт-Петербург (812)309-46-40
Саратов (845)249-38-78
Севастополь (8692)22-31-93
Симферополь (3652)67-13-56
Смоленск (4812)29-41-54
Сочи (862)225-72-31
Ставрополь (8652)20-65-13

Казахстан (772)734-952-31

Сургут (3462)77-98-35
Тверь (4822)63-31-35
Томск (3822)98-41-53
Тула (4872)74-02-29
Тюмень (3452)66-21-18
Ульяновск (8422)24-23-59
Уфа (347)229-48-12
Хабаровск (4212)92-98-04
Челябинск (351)202-03-61
Череповец (8202)49-02-64
Ярославль (4852)69-52-93

www.panblast.nt-rt.ru | | pav@nt-rt.ru

Технические характеристики на комбинированные клапаны КОМПАНИИ PanBlast



UniFlo Remote Control Conversion Kit



Product Features

The PanBlast™ UniFlo Remote Control Conversion Kit includes all the PanBlast™ products required to equip generic pressure blast pots with remote control or upgrading of outdated remote control systems. The BSP kit is suitable for use with most non-U.S. blasting equipment.

- ▶ PanBlast™ Uniflo Remote Control Valve.
- ▶ PanBlast™ AirFlo Remote Control Handle.
- ▶ PanBlast™ Twinline Hose.
- ▶ Panlast™ Exhaust Muffler.
- ▶ All required fittings and hardware.

Common Applications

- ▶ Conversion of manual blast pot systems to remote control.
- ▶ Updating outmoded remote control blasting systems.

Complementary Products



Blast Pots



Fina II Valve



QuikStop IIS Pneumatic Handle



Moisture Separator



Corsa II Valve



Plana II Valve



Electric Remote Conversion Kit



Titan II SAR



All data and information subject to change without prior notice. Brochure reference CAT-0203-01-00

Assembly



Stock Code	Description	Weight
BAC-RC-PB-0001	UniFlo Remote Control Conversion Kit	21 kg (46.3 lbs)

Parts List

Description	Qty	Description	Qty	Description	Qty
1 Twinline Hose	1	4 Hose Air / Water Delivery	1	7 Ball Valve	1
2 Exhaust Muffler C/W Fittings	1	5 AirFlo Pneumatic Handle	1	8 Hose Clamps	1
3 UniFlo Valve C/W Fittings	1	6 Pressure Relief Valve	1	9 Pneumatic Fittings	1



UniFlo Valve Assembly With Fittings



Product Features

The PanBlast™ UniFlo BSP Remote Control Valve is an air operated inlet/outlet valve, used in conjunction with the AirFlo Remote Control Handle to control the blast pot supply air and exhaust. The BSP configuration is designed to connect with non-U.S. blasting equipment.

- ▶ Normally-closed inlet.
- ▶ Simultaneous inlet/outlet operation.
- ▶ One-piece design for easy installation.
- ▶ Service kits available.
- ▶ 32 mm (1-1/4") BSP threads.

Common Applications

- ▶ On site industrial and commercial blasting.
- ▶ Blast and painting contractor yard work.
- ▶ Blast room applications.
- ▶ In situ blasting in shipyards and slipways.

Complementary Products



AirFlo Pneumatic Handle



Twinline Hose



QuikStop IIS Pneumatic Handle



Moisture Separator



AirFlo Electric Handle



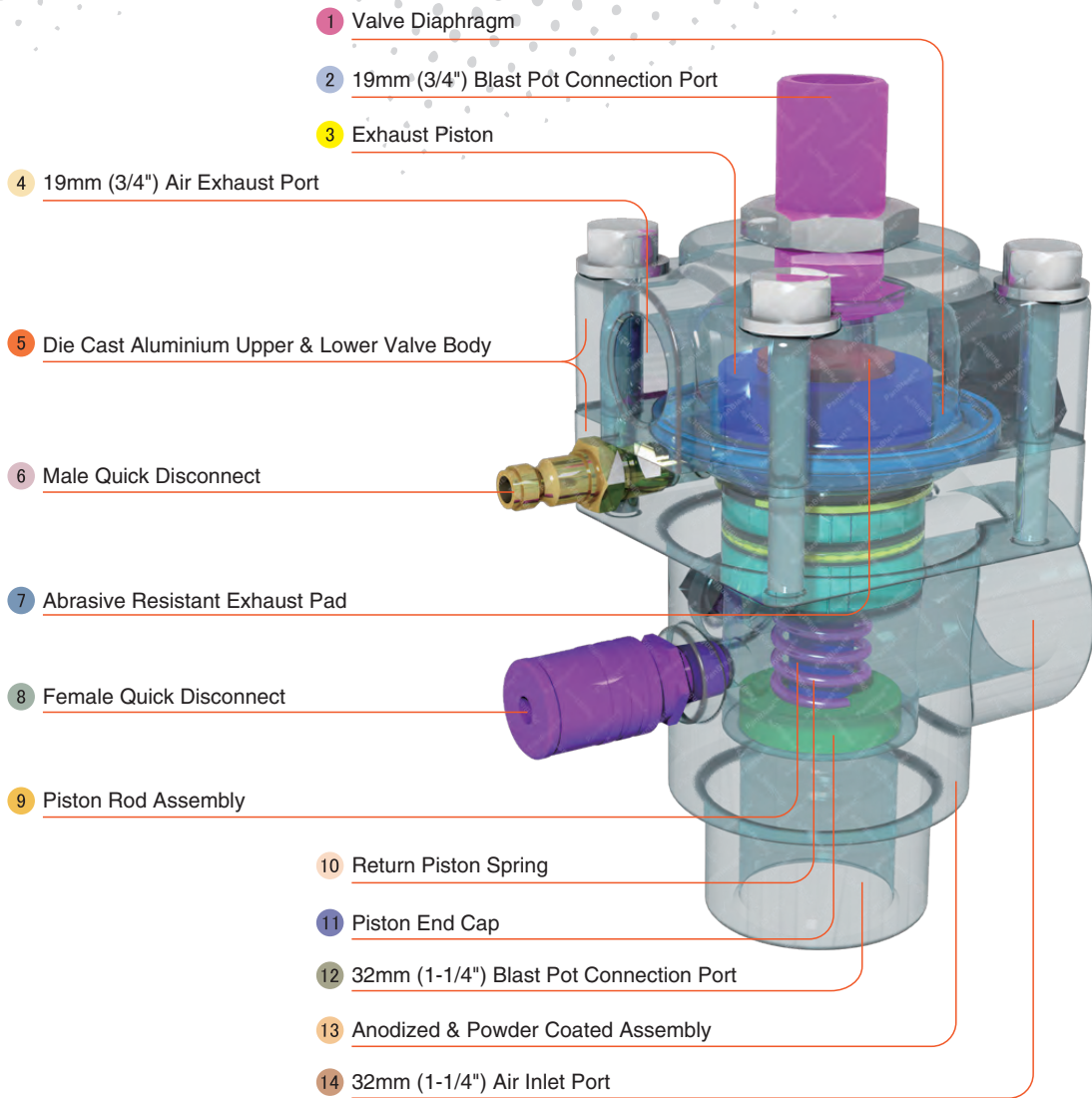
UniFlo Conversion Kit



Exhaust Muffler



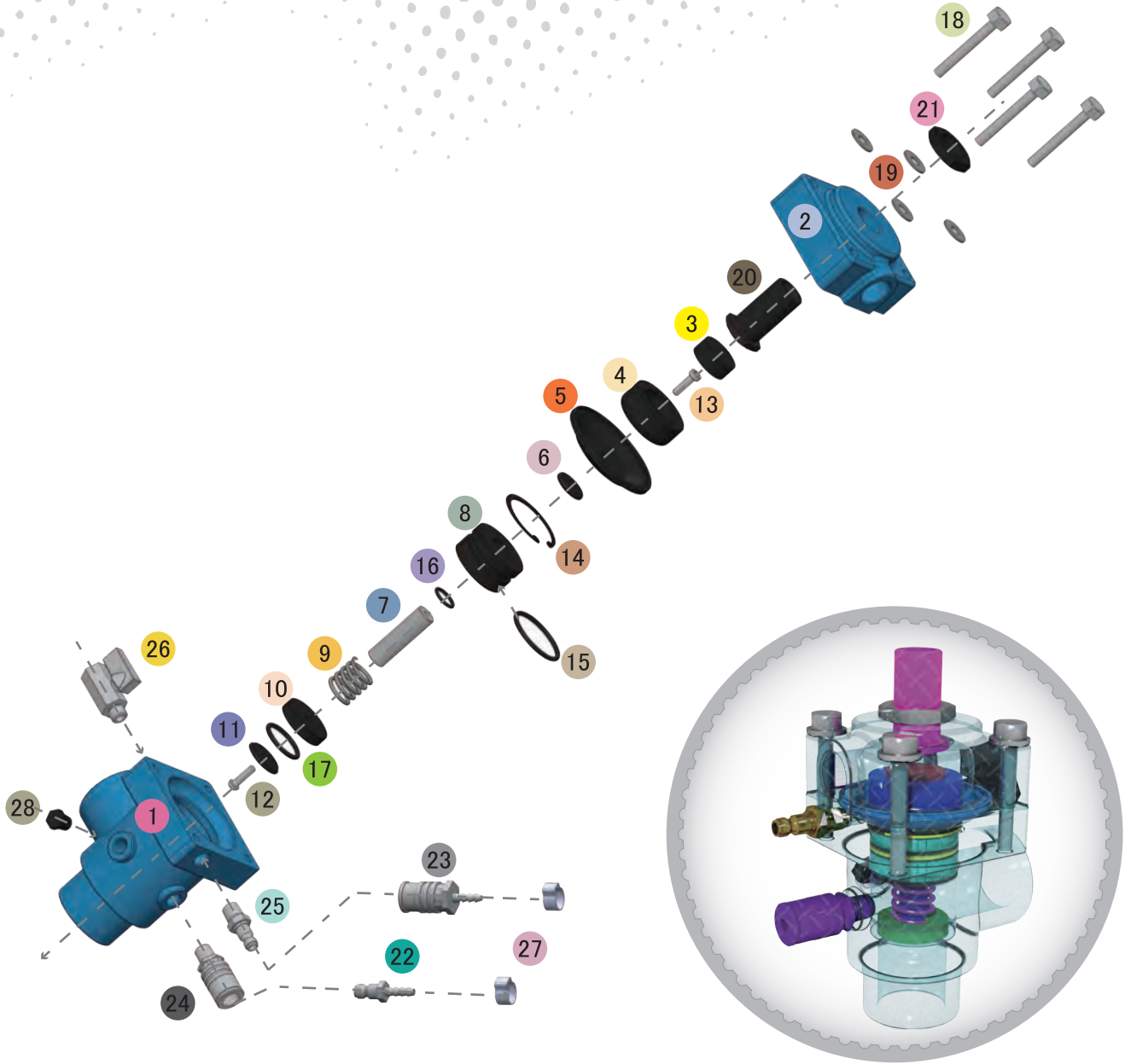
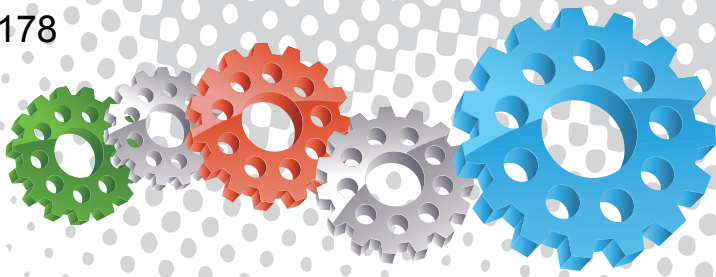
Pop Up Valves



Component Highlights



- | | | |
|---|----------------------------------|---|
| 1 Valve Diaphragm | 6 Male Quick Disconnect | 11 Piston End Cap |
| 2 19 mm (3/4") Blast Pot Connection Port | 7 Abrasive Resistant Exhaust Pad | 12 32 mm (1-1/4") Blast Pot Connection Port |
| 3 Exhaust Piston | 8 Female Quick Disconnect | 13 Anodized & Powder Coated Assembly |
| 4 19 mm (3/4") Air Exhaust Port | 9 Piston Rod Assembly | 14 32 mm (1-1/4") Air Inlet Port |
| 5 Die Cast Aluminium Upper & Lower Valve Body | 10 Return Piston Spring | |



Assembly

Stock Code	Description	Weight
BAC-RC-PB-0014	UniFlo Valve Assembly With Fittings	2.50 kg (5.51 lbs)

Service Kits

Stock Code	Description	Include Items
BAC-RC-PB-0092	UniFlo Seal Kit	3, 5, 15, 16, 17
BAC-RC-PB-0004	UniFlo Fittings Kit	20, 21, 24, 25, 26, 28
BAC-RC-PB-0005	UniFlo Piston Kit	4, 6, 7, 8, 9, 10, 11, 12, 13, 14, 18, 19
BAC-RC-PB-0097	UniFlo Top End Service Kit	3, 4, 5, 20
BAC-RC-PB-0098	UniFlo Exhaust Pad Kit	3 X 3
BAC-RC-PB-0099	UniFlo Diaphragm Pad Kit	5 X 3



Parts List



Description	Qty	Description	Qty	Description	Qty
1 Body	1	11 Retaining Disk	1	21 Lock Nut	1
2 Exhaust Chamber	1	12 Screw	1	22 Quick Disconnect Fitting Male	1
3 Exhaust Pad	1	13 Screw	1	23 Quick Disconnect Fitting Female	1
4 Piston	1	14 Circlip	1	24 Quick Disconnect Fitting Female	1
5 Diaphragm	1	15 O-Ring	1	25 Quick Disconnect Fitting Male	1
6 Backing Washer	1	16 O-Ring	1	26 Mini Ball Valve	1
7 Piston Rod	1	17 O-Ring	1	27 Hose Clamp	2
8 Bush	1	18 Hex Head Bolt	4	28 Plug	1
9 Spring	1	19 Flat Washer	4		
10 Piston End Cap	1	20 Nipple - Customized	1		



UniFlo Remote Control Kit



Product Features

The PanBlast™ UniFlo Remote Control Kit includes all the components required to equip generic pressure blast pots with remote control, or to upgrade pressure blast pots fitted with outdated remote control systems.

- ▶ PanBlast™ UniFlo Remote Control Valve.
- ▶ PanBlast™ AirFlo Remote Control Handle.
- ▶ PanBlast™ Twinline Hose.
- ▶ PanBlast™ Exhaust Muffler.
- ▶ All required fittings and hardware.

Common Applications

- ▶ Conversion of manual blast pot systems to remote control.
- ▶ Updating outmoded remote control blasting systems.

Complementary Products



Blast Pots



Fina II Valve



QuikStop IIS Pneumatic Handle



Moisture Separator



Corsa II Valve



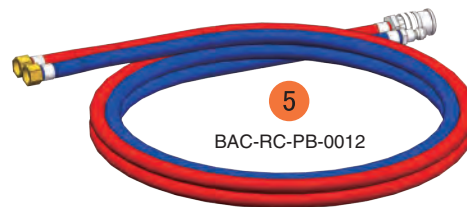
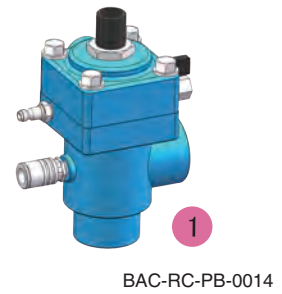
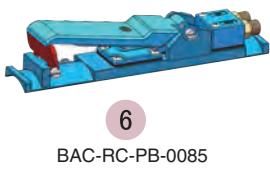
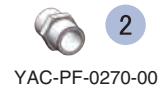
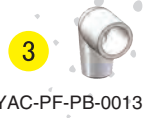
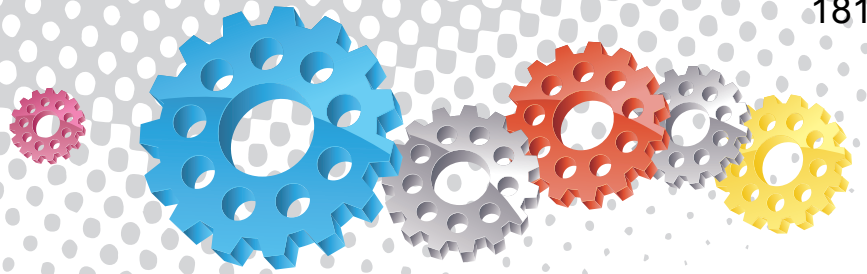
Plana II Valve



Electric Remote Conversion Kit



Titan II SAR



All data and information subject to change without prior notice. Brochure reference CAT-0203-04-00

Assembly



Stock Code	Description	Weight
BAC-RC-0479-01	UniFlo Remote Control Kit	12 kg (26.46 lbs)

Parts List

Description	Qty	Description	Qty	Description	Qty
1 UniFlo Valve C/W Fittings	1	3 Elbow	1	5 20 m (66') Twinline Hose Assembly	1
2 Nipple	1	4 Exhaust Muffler	1	6 AirFlo Pneumatic Control Handle	1



Sola 5 Remote Control System



Product Features

The PanBlast™ Sola 5 Remote Control System combines a piston type inlet valve and a diaphragm type exhaust valve with the PanBlast AirFlo Remote Control Deadman Handle. The result is a complete remote control system for smaller blast pots. The BSP configuration is compatible with most non-U.S. blasting equipment.

- ▶ Fast, positive inlet valve actuation.
- ▶ Deadman style control handle for safety.
- ▶ Control and interconnecting hoses included.
- ▶ Anodized internal valve surfaces.
- ▶ Simple maintenance.
- ▶ Parts and service kits available.
- ▶ 13 mm (1/2") BSP threads.

Common Applications

- ▶ Blast room, yard and on site operations.
- ▶ Remote control for low capacity blast pots.

Complementary Products



Junior Plana Valve



Fina II Valve



Electric Remote Conversion Kit



ATN-S Blast Nozzles



Nylon Nozzle Holders



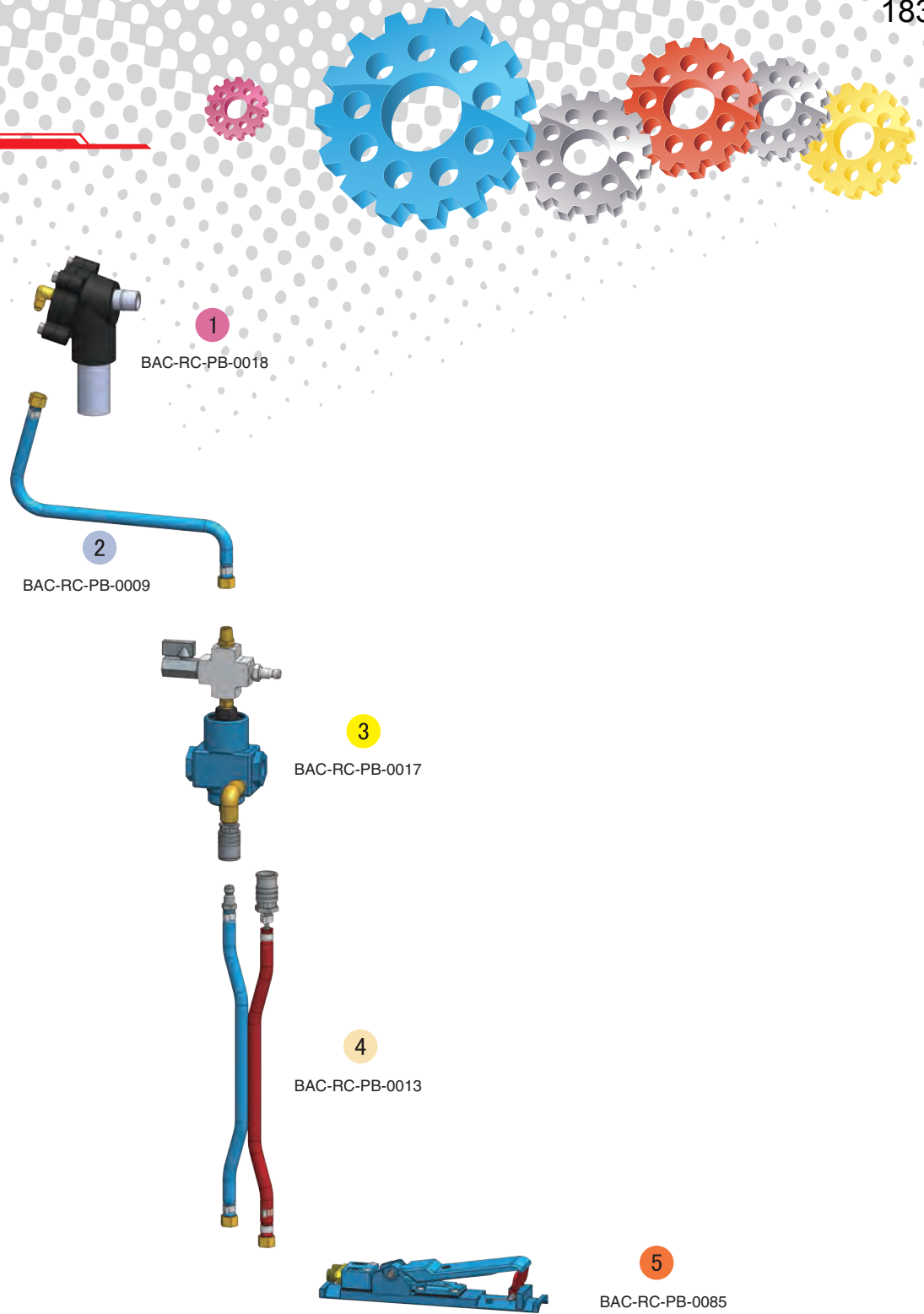
Nylon Couplings



Blast Hoses



Pop Up Valves



All data and information subject to change without prior notice. Brochure reference CAT-0203-03-00

Assembly



Stock Code	Description	Weight
BAC-RC-0505-00	Sola 5 Remote Control System	5.80 kg (12.76 lbs)

Parts List

Description	Qty	Description	Qty	Description	Qty
1 Sola 5 NPT Exhaust Valve	1	3 Sola 5 Inlet Valve Assembly	1	5 AirFlo Pneumatic Control Handle	1
2 Inter Connecting Hose	1	4 10 m (33') Twinline Hose Assembly	1		



Kombi NPT Remote Control Valve



Product Features

The PanBlast™ Kombi NPT Remote Control Valve is an air operated combination inlet and exhaust valve, used in conjunction with the AirStop Remote Control Handle to simultaneously control the blast pot supply air and exhaust. The NPT configuration is suited for use with most U.S. blasting equipment.

- ▶ One-piece construction for easy installation.
- ▶ Single piston design.
- ▶ 32 mm (1-1/4") NPT threads.

Common Applications

- ▶ On site industrial and commercial blasting.
- ▶ Blast and painting contractor yard work.
- ▶ Blast room applications.
- ▶ In situ blasting in shipyards and slipways.

Complementary Products



AirStop Pneumatic Handle



Twinline Hose



AirStop II Pneumatic Handle



Pop Up Valves



QuikStop IIS Electric Handle



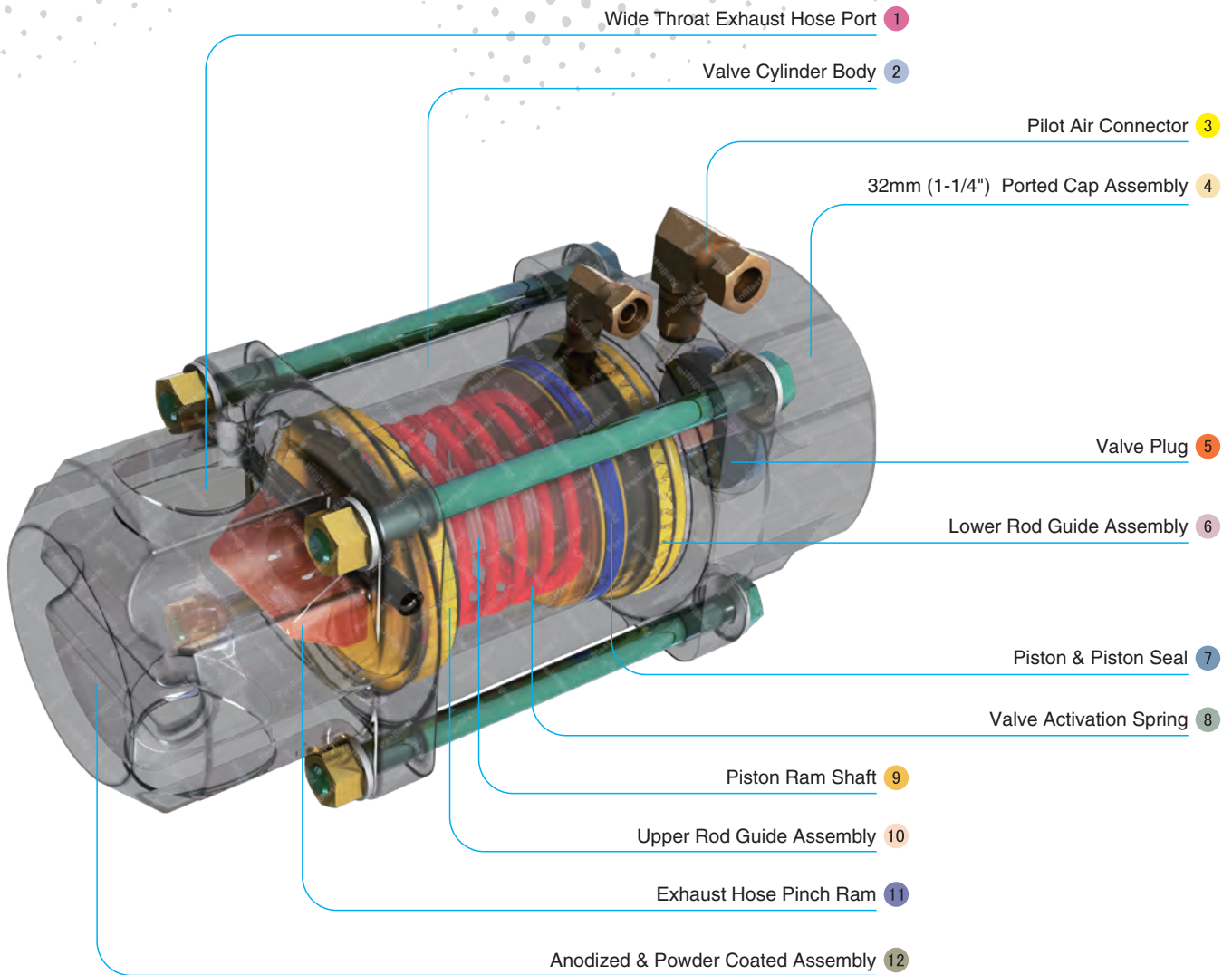
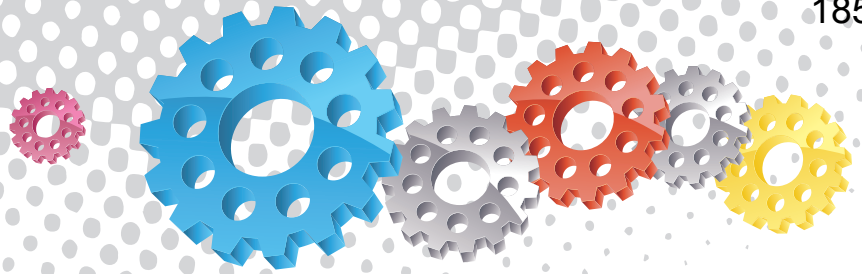
AirStop IV Pneumatic Handle



AirStop II Electric Handle



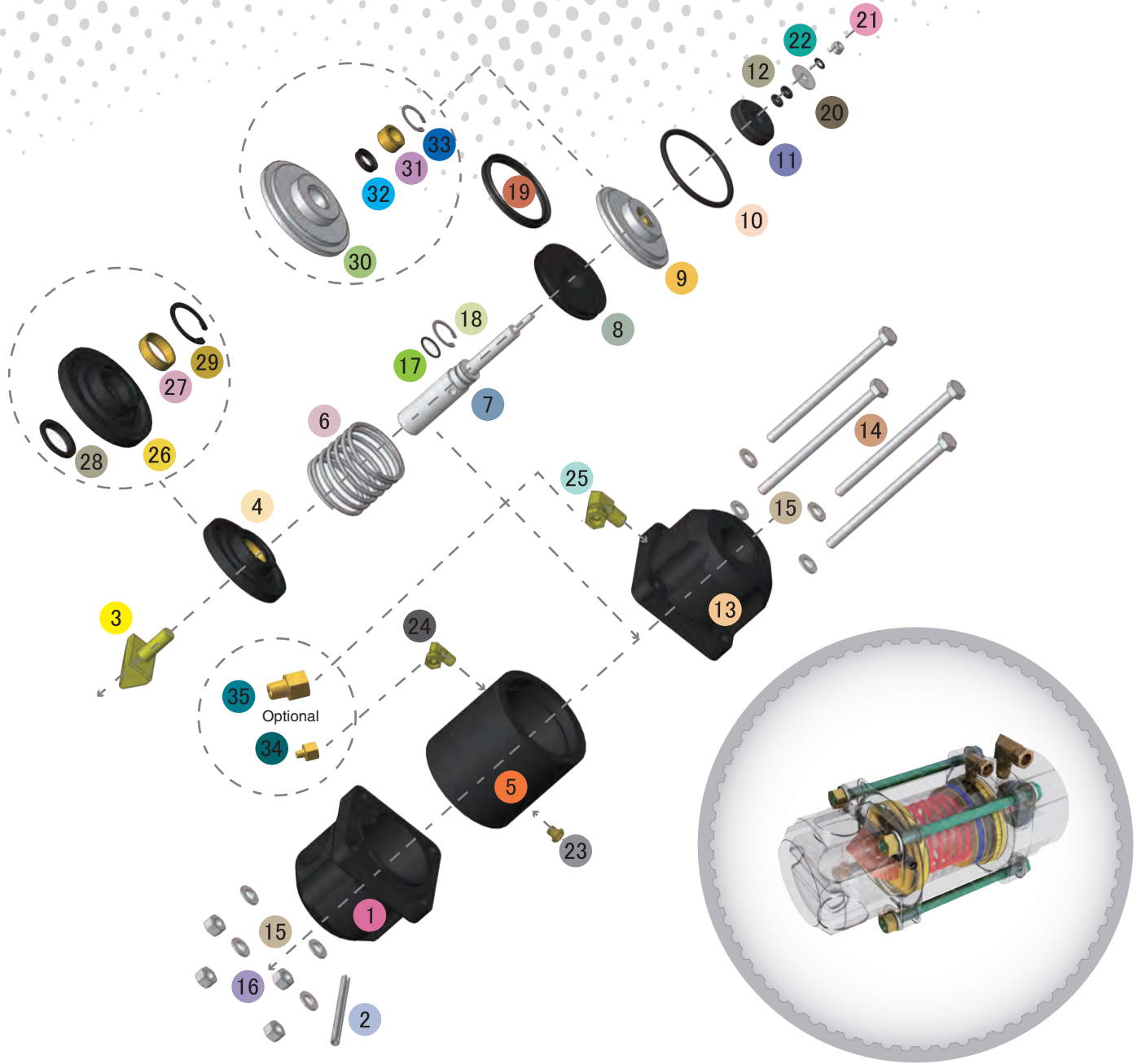
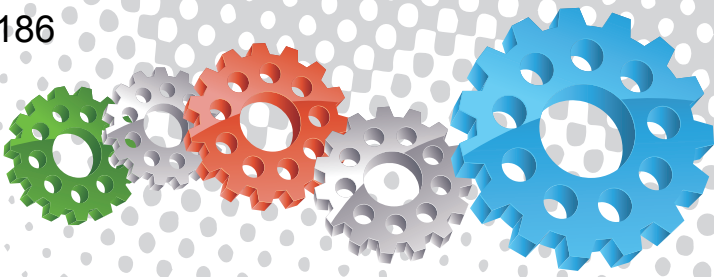
Exhaust Muffler



Component Highlights



- | | | |
|--------------------------------------|----------------------------|--------------------------------------|
| 1 Wide Throat Exhaust Hose Port | 5 Valve Plug | 9 Piston Ram Shaft |
| 2 Valve Cylinder Body | 6 Lower Rod Guide Assembly | 10 Upper Rod Guide Assembly |
| 3 Pilot Air Connector | 7 Piston & Piston Seal | 11 Exhaust Hose Pinch Ram |
| 4 32 mm (1-1/4") Ported Cap Assembly | 8 Valve Activation Spring | 12 Anodized & Powder Coated Assembly |



Assembly

Stock Code	Description	Weight
BAC-RC-0143-02	Kombi NPT Remote Control Valve	4.3 kg (9.5 lbs)

Service Kits

Stock Code	Description	Include Items
BAC-RC-PB-0365	Kombi Valve Plug Assembly Kit	11 12 x2 20 21 22
BAC-RC-PB-0265	Kombi Valve Seal Service Kit	10 11 12 x2 17 18 19 21 22 28 29 32
BAC-RC-PB-0242	Kombi Valve End Cap Kit	1 2
BAC-RC-0584-00	Kombi NPT/BSP Fittings Kit	34 35
BAC-RC-PB-0163	Kombi Valve Service Kit	10 11 12 x2 17 18 19 20 28 32



Kombi II NPT Remote Control Valve



Product Features

The PanBlast™ Kombi II NPT Remote Control Valve is an improved combination inlet and exhaust valve, working in conjunction with the AirStop Remote Control Handle to simultaneously control the blast pot supply air and exhaust. The Kombi II features updated materials and a simplified design over the original Kombi valve. The NPT configuration is suitable for use with most U.S. blasting equipment.

- ▶ Simplified, integrated design.
- ▶ Redesigned Delrin® upper rod guide.
- ▶ Clear acrylic top cover allows inspection of the exhaust hose.
- ▶ Powder coat external finish.
- ▶ Anodized internally.
- ▶ Interchangeable with other generic valves.

Common Applications

- ▶ On site industrial and commercial blasting.
- ▶ Blast and painting contractor yard work.
- ▶ Blast room applications.
- ▶ In situ blasting in shipyards and slipways.

Complementary Products



AirStop Pneumatic Handle



Twinline Hose



AirStop II Pneumatic Handle



Pop Up Valves



AirStop Electric Handle



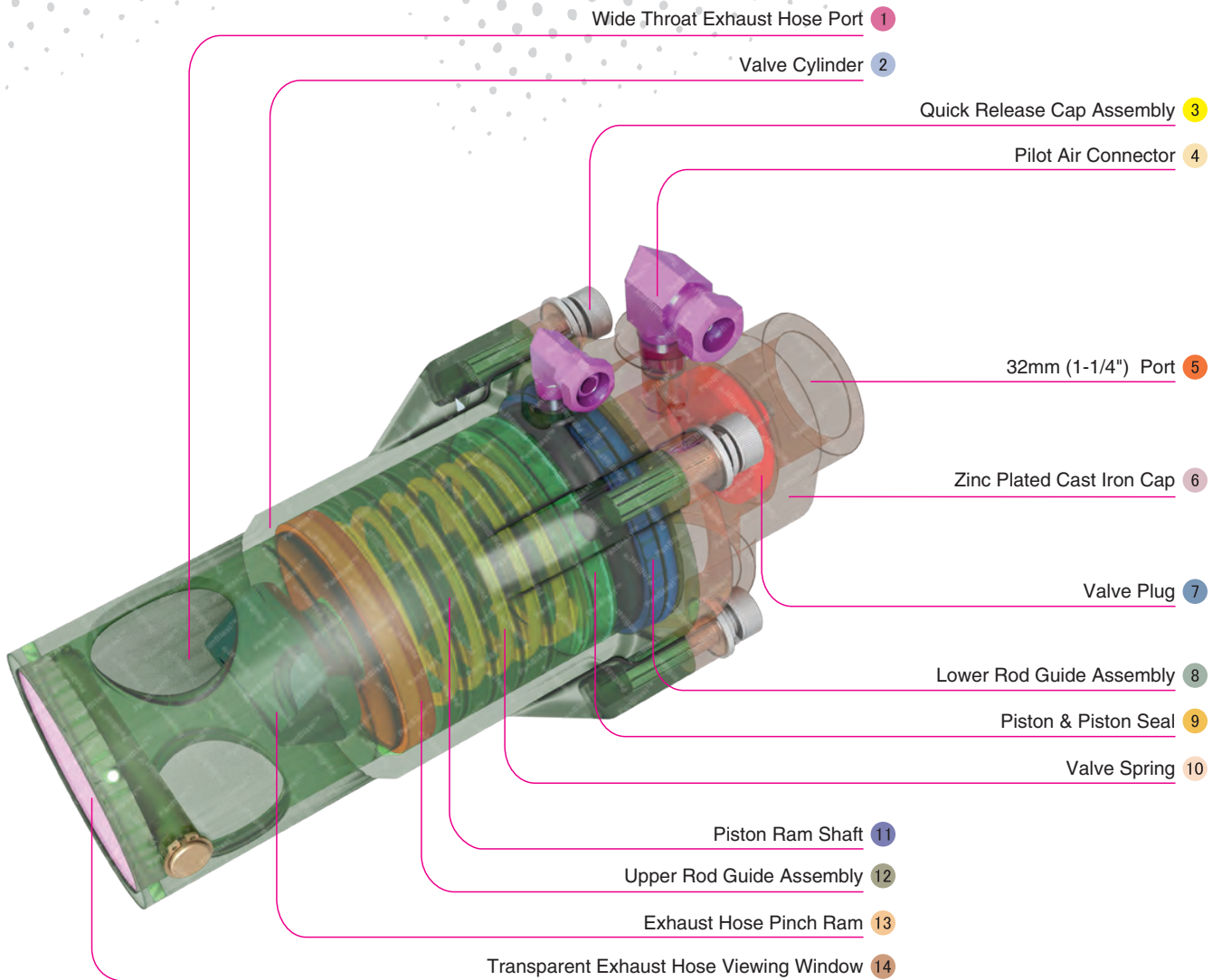
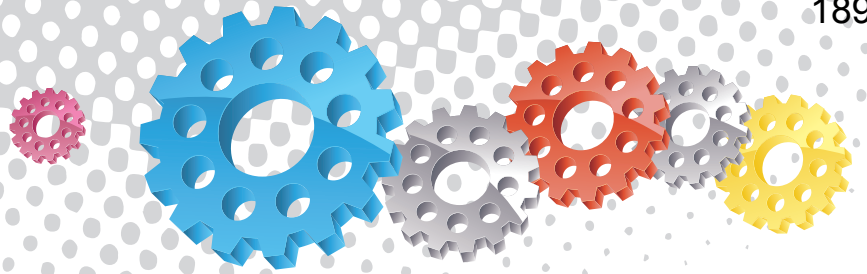
AirStop IV Pneumatic Handle



AirStop II Electric Handle



Exhaust Muffler



Component Highlights



- | | | |
|---------------------------------|-----------------------------|--|
| 1 Wide Throat Exhaust Hose Port | 6 Zinc Plated Cast Iron Cap | 11 Piston Ram Shaft |
| 2 Valve Cylinder | 7 Valve Plug | 12 Upper Rod Guide Assembly |
| 3 Quick Release Cap Assembly | 8 Lower Rod Guide Assembly | 13 Exhaust Hose Pinch Ram |
| 4 Pilot Air Connector | 9 Piston & Piston Seal | 14 Transparent Exhaust Hose Viewing Window |
| 5 32 mm (1-1/4") Port | 10 Valve Spring | |



Assembly

Stock Code	Description	Weight
BAC-RC-0509-00	Kombi II NPT Remote Control Valve	3.9 kg (8.6 lbs)

Service Kits

Stock Code	Description	Include Items
BAC-RC-PB-0365	Kombi Valve Plug Assembly Kit	18 19 x2 20 21 22
BAC-RC-PB-0265	Kombi Valve Seal Service Kit	12 13 14 17 18 19 x2 20 21 22 30 33
BAC-RC-PB-0163	Kombi Valve Service Kit	12 13 14 17 18 19 x2 20 30 33



Parts List



Description	Qty	Description	Qty	Description	Qty
1 Cover	1	12 O-ring	1	23 Elbow With Nut - NPT	1
2 Pin	1	13 Circlip	1	24 Base	1
3 Circlip	2	14 Piston Seal	1	25 Screw	4
4 Screw	4	15 Piston	1	26 Flat Washer	4
5 Cylinder	1	16 Kombi Lower Rod Guide Kit	1	27 Spring Washer	4
6 Exhaust Filter Brass	1	17 O-ring	1	28 Lower Rod Guide	1
7 Elbow With Nut - NPT	1	18 Valve Plug	1	29 Lower Rod Guide Bush	1
8 Pinch Ram	1	19 O-ring	2	30 Lower Seal	1
9 Kombi II Upper Rod Guide Kit	1	20 Flat Washer	1	31 Circlip	1
10 Spring	1	21 Spring Washer	1	32 Upper Rod Guide	1
11 Shaft	1	22 Lock Nut	1	33 Upper Seal	1



Kombi III NPT Remote Control Valve



Product Features

The PanBlast™ Kombi III NPT Remote Control Valve is a high flow rate combination type inlet and exhaust valve; working in conjunction with the AirStop Remote Control Handle to simultaneously control the blast pot supply air and exhaust. The Kombi III features updated materials and a simplified design over the original Kombi valve. The 38 mm (1-1/2") NPT thread flow ports are suitable for use with most U.S. blasting equipment.

- ▶ 44% larger flow area than Kombi and Kombi II valves.
- ▶ Simplified, integrated design.
- ▶ Redesigned Delrin® upper rod guide.
- ▶ Clear acrylic top cover allows inspection of the exhaust hose.
- ▶ Powder coat external finish.
- ▶ Anodized internally.
- ▶ Interchangeable with other generic valves.

Common Applications

- ▶ On site industrial and commercial blasting.
- ▶ Blast and painting contractor yard work.
- ▶ Blast room applications.
- ▶ In situ blasting in shipyards and slipways.

Complementary Products



AirStop Pneumatic Handle



Twinline Hose



AirStop II Pneumatic Handle



Pop Up Valves



AirStop Electric Handle



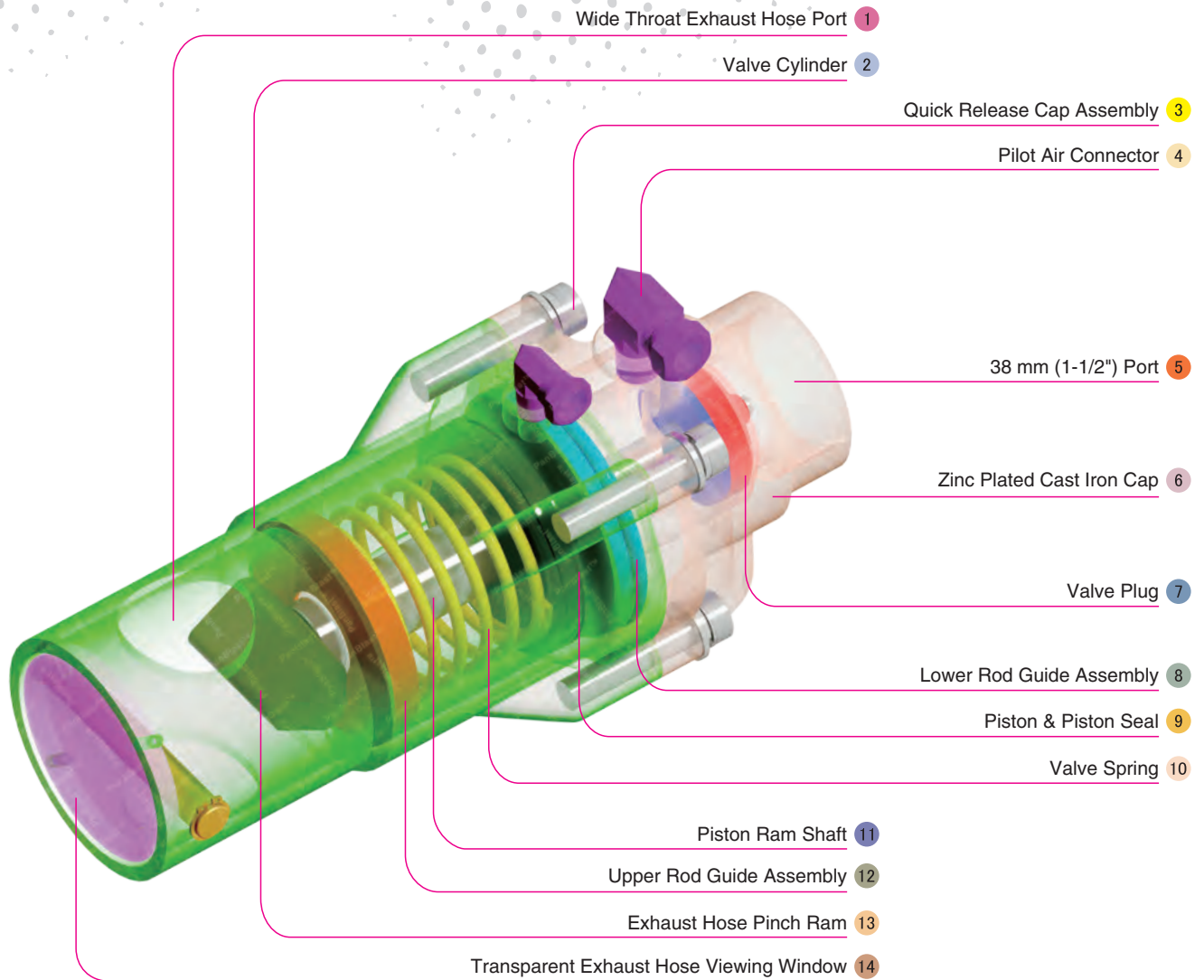
AirStop IV Pneumatic Handle



AirStop II Electric Handle



Exhaust Muffler



Component Highlights



- | | | |
|---------------------------------|-----------------------------|--|
| 1 Wide Throat Exhaust Hose Port | 6 Zinc Plated Cast Iron Cap | 11 Piston Ram Shaft |
| 2 Valve Cylinder | 7 Valve Plug | 12 Upper Rod Guide Assembly |
| 3 Quick Release Cap Assembly | 8 Lower Rod Guide Assembly | 13 Exhaust Hose Pinch Ram |
| 4 Pilot Air Connector | 9 Piston & Piston Seal | 14 Transparent Exhaust Hose Viewing Window |
| 5 38 mm (1-1/2") Port | 10 Valve Spring | |



Assembly

Stock Code	Description	Weight
BAC-RC-0662-00	Kombi III NPT Remote Control Valve	3.9 kg (8.6 lbs)

Service Kits

Stock Code	Description	Include Items
BAC-RC-PB-0365	Kombi Valve Plug Assembly Kit	18 19 x2 20 21 22
BAC-RC-PB-0265	Kombi Valve Seal Service Kit	12 13 14 17 18 19 x2 20 21 22 30 33
BAC-RC-PB-0163	Kombi Valve Service Kit	12 13 14 17 18 19 x2 20 30 33
BAC-RC-0667-00	Kombi II to Kombi III Conversion Kit	24 28



Parts List



Description	Qty	Description	Qty	Description	Qty
1 Cover	1	12 O-ring	1	23 Elbow With Nut - NPT	1
2 Pin	1	13 Circlip	1	24 Base	1
3 Circlip	2	14 Piston Seal	1	25 Screw	4
4 Screw	4	15 Piston	1	26 Flat Washer	4
5 Cylinder	1	16 Kombi Lower Rod Guide Kit	1	27 Spring Washer	4
6 Exhaust Filter Brass	1	17 O-ring	1	28 Plug Spacer	1
7 Elbow With Nut - NPT	1	18 Valve Plug	1	29 Lower Rod Guide	1
8 Pinch Ram	1	19 O-ring	2	30 Lower Rod Guide Bush	1
9 Kombi II Upper Rod Guide Kit	1	20 Flat Washer	1	31 Lower Seal	1
10 Spring	1	21 Spring Washer	1	32 Circlip	1
11 Shaft	1	22 Lock Nut	1	33 Upper Rod Guide	1
				34 Upper Seal	1



Helix 150 Valve Assembly



Product Features

The PanBlast™ Helix 150 BSP Remote Control Valve combines the Helix 100 BSP Inlet Control Valve and the Helix 50 BSP Exhaust Control Valve, for a compact, air actuated valve that controls the blast pot supply air and exhaust, in tandem with a remote control handle. The BSP configuration is compatible with most non-U.S. blasting equipment.

- ▶ Anodized internal parts.
- ▶ Powder coated external parts.
- ▶ Parts interchangeable with OEM RMS/RCV style valves.

Common Applications

- ▶ On site industrial and commercial blasting.
- ▶ Blast and painting contractor yard work.
- ▶ Blast room applications.
- ▶ In situ blasting in shipyards and slipways.

Complementary Products



AirFlo Pneumatic Handle



Twinline Hose



QuikStop IIS Pneumatic Handle



Moisture Separator



AirFlo Electric Handle



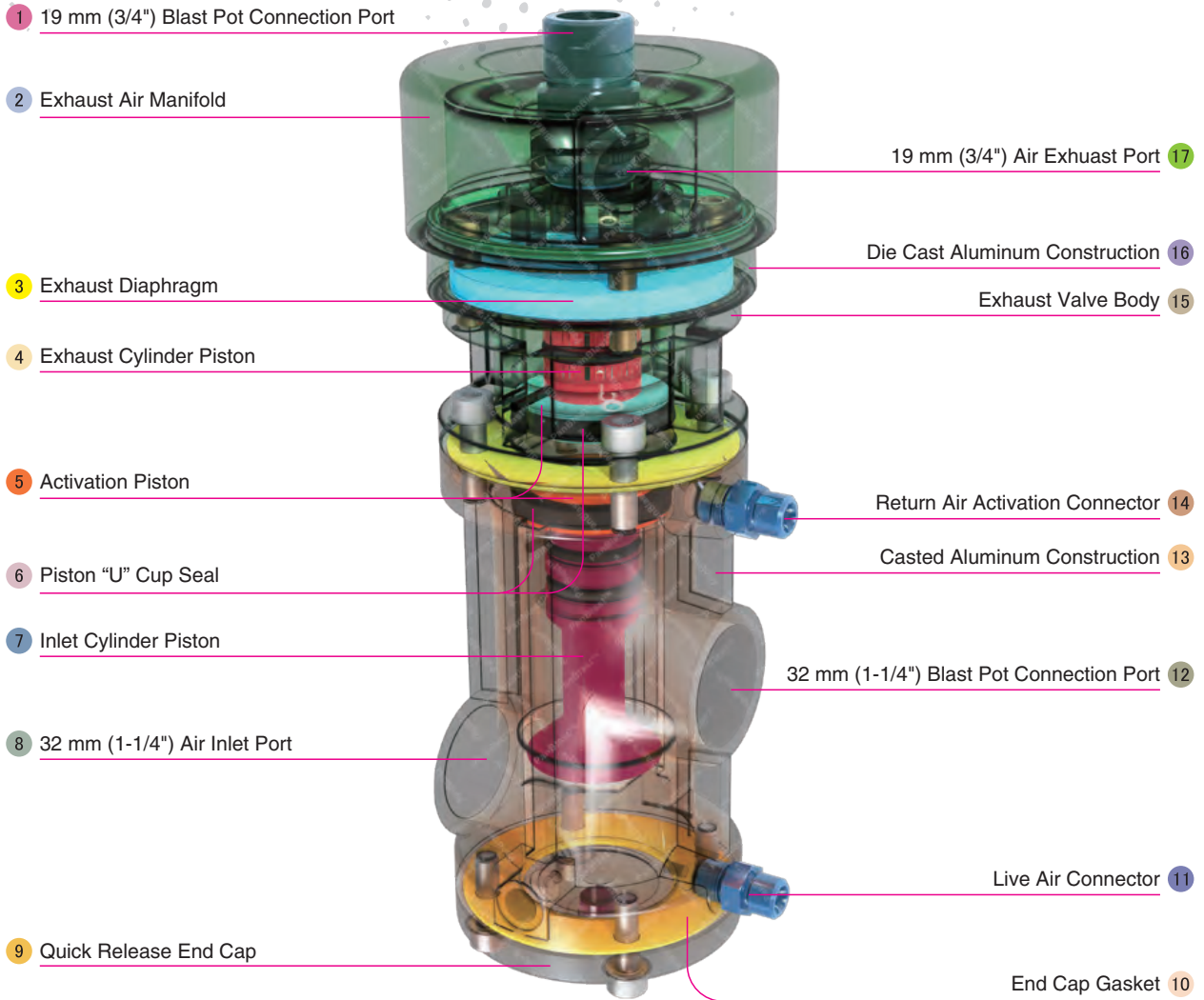
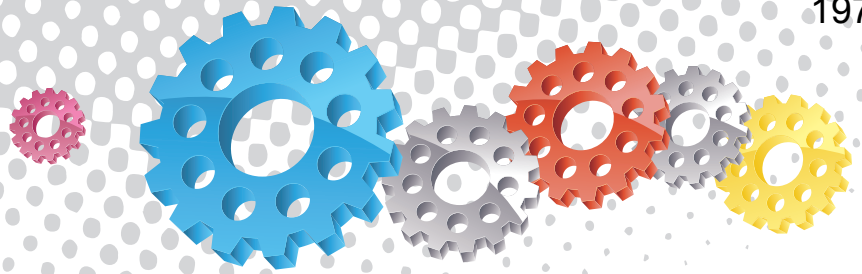
Plana II Valve



Exhaust Muffler



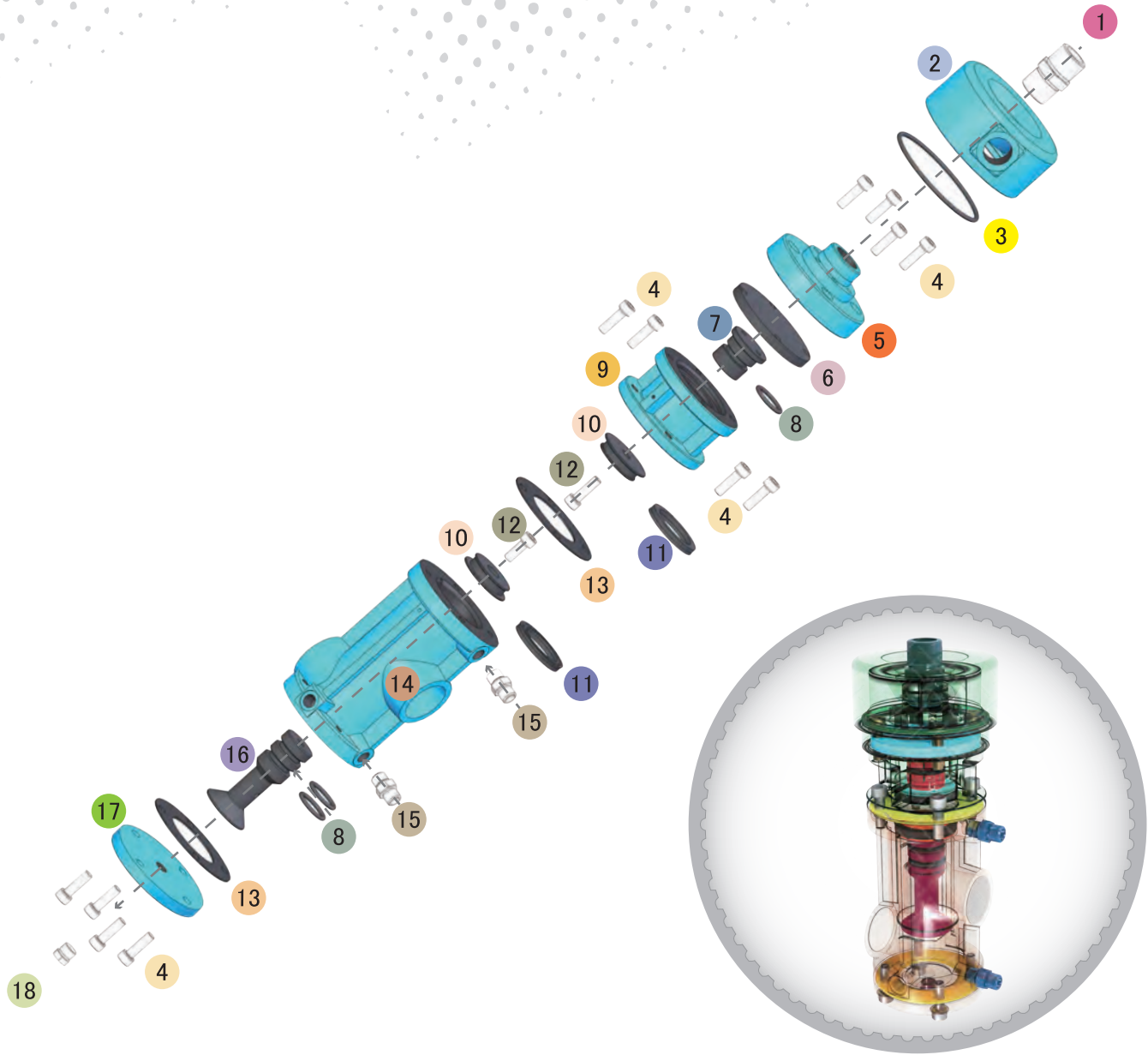
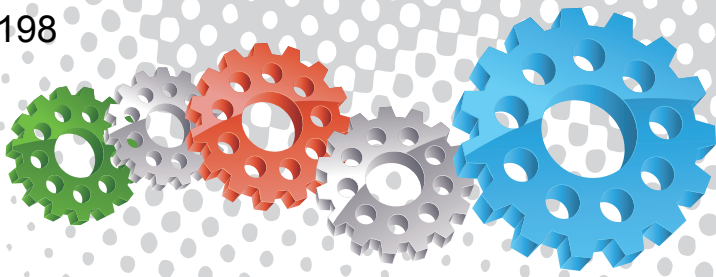
Fina II Valve



Component Highlights



- | | | |
|--|---|------------------------------------|
| 1 19 mm (3/4") Blast Pot Connection Port | 7 Inlet Cylinder Piston | 13 Casted Aluminum Construction |
| 2 Exhaust Air Manifold | 8 32 mm (1-1/4") Air Inlet Port | 14 Return Air Activation Connector |
| 3 Exhaust Diaphragm | 9 Quick Release End Cap | 15 Exhaust Valve Body |
| 4 Exhaust Cylinder Piston | 10 End Cap Gasket | 16 Die Cast Aluminum Construction |
| 5 Activation Piston | 11 Live Air Connector | 17 19 mm (3/4") Air Exhaust Port |
| 6 Piston "U" Cup Seal | 12 32 mm (1-1/4") Blast Pot Connection Port | |



Assembly

Stock Code	Description	Weight
BAC-RC-PB-0307	Helix 150 Valve Assembly	3.24 kg (7.13 lbs)

Service Kit

Stock Code	Description	Include Items
BAC-RC-0478-00	Helix 150 Valve Seal Kit	3 6 8 x3 11 x2 13 x2



Parts List



Description	Qty	Description	Qty	Description	Qty
1 Nipple - Customized	1	7 Outlet Piston	1	13 Cap Gasket	2
2 Exhaust Manifold	1	8 O-ring	3	14 Housing	1
3 O-ring	1	9 Exhaust Cylinder	1	15 Nipple	2
4 Screw	12	10 Piston	2	16 Inlet Piston	1
5 Exhaust Base	1	11 Piston U-Seal	2	17 Cylinder Housing Cap	1
6 Diaphragm	1	12 Screw	2	18 Plug	1



Helix 150 NPT Valve Assembly



Product Features

The PanBlast™ Helix 150 NPT Remote Control Valve combines the Helix 100 NPT Inlet Control Valve and the Helix 50 NPT Exhaust Control Valve, for a compact, air actuated valve that controls the blast pot supply air and exhaust, in tandem with a remote control handle. The NPT configuration is compatible with most U.S. blasting equipment.

- ▶ Anodized internal parts.
- ▶ Powder coated external parts.
- ▶ Parts interchangeable with OEM RMS/RCV style valves.

Common Applications

- ▶ On site industrial and commercial blasting.
- ▶ Blast and painting contractor yard work.
- ▶ Blast room applications.
- ▶ In situ blasting in shipyards and slipways.

Complementary Products



AirFlo Pneumatic Handle



Twinline Hose



QuikStop IIS Pneumatic Handle



Moisture Separator



AirFlo Electric Handle



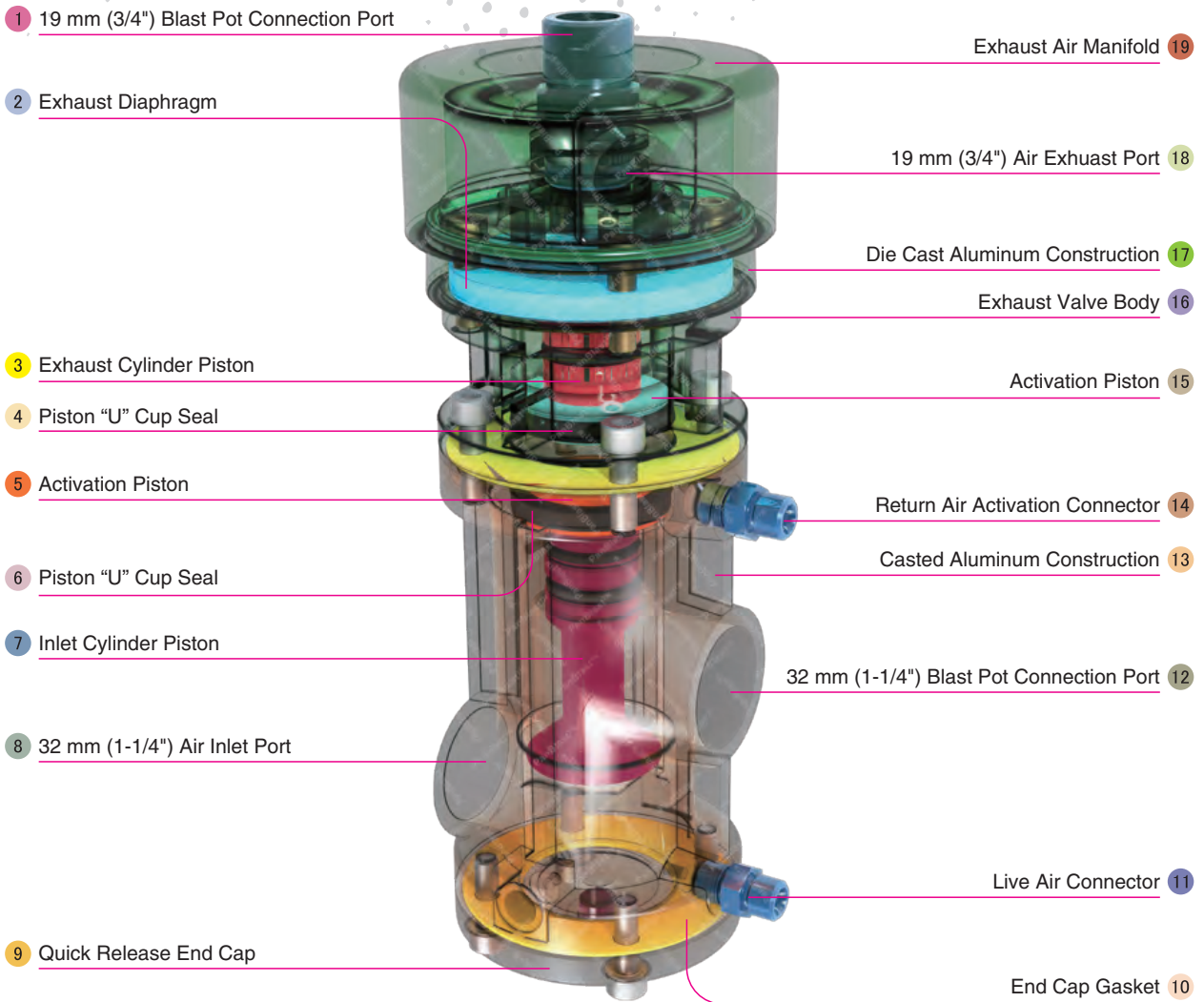
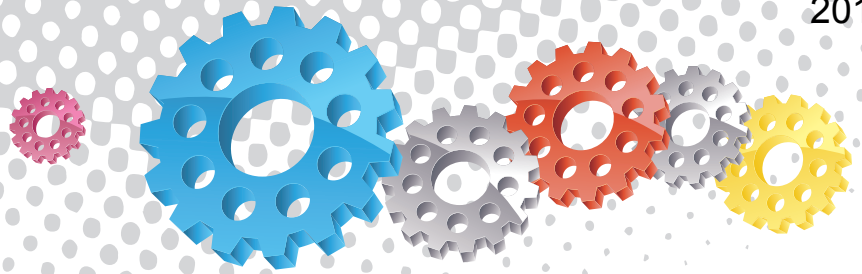
Plana II Valve



Exhaust Muffler



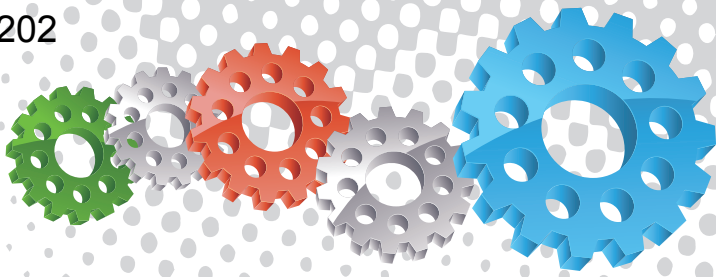
Fina II Valve



Component Highlights



- | | | |
|--|---|-----------------------------------|
| 1 19 mm (3/4") Blast Pot Connection Port | 8 32 mm (1-1/4") Air Inlet Port | 15 Activation Piston |
| 2 Exhaust Diaphragm | 9 Quick Release End Cap | 16 Exhaust Valve Body |
| 3 Exhaust Cylinder Piston | 10 End Cap Gasket | 17 Die Cast Aluminum Construction |
| 4 Piston "U" Cup Seal | 11 Live Air Connector | 18 19 mm (3/4") Air Exhaust Port |
| 5 Activation Piston | 12 32 mm (1-1/4") Blast Pot Connection Port | 19 Exhaust Air Manifold |
| 6 Piston "U" Cup Seal | 13 Die Cast Aluminum Construction | |
| 7 Inlet Cylinder Piston | 14 Return Air Activation Connector | |



Assembly

Stock Code	Description	Weight
BAC-RC-PB-0311	Helix 150 NPT Valve Assembly	3.24 kg (7.13 lbs)

Service Kit

Stock Code	Description	Include Items
BAC-RC-0478-00	Helix 150 Valve Seal Kit	3 6 8 x3 11 x2 13 x2



Parts List



Description	Qty	Description	Qty	Description	Qty
1 Nipple - NPT	1	7 Outlet Piston - NPT	1	13 Cap Gasket	2
2 Exhaust Manifold - NPT	1	8 O-ring	3	14 Housing - NPT	1
3 O-ring	1	9 Exhaust Cylinder - NPT	1	15 Nipple - NPT	2
4 Screw	12	10 Piston	2	16 Inlet Piston - NPT	1
5 Exhaust Base - NPT	1	11 Piston U-Seal	2	17 Cylinder Housing Cap	1
6 Diaphragm	1	12 Screw	2	18 Plug - NPT	1

Архангельск (8182)63-90-72
Астана (7172)727-132
Астрахань (8512)99-46-04
Барнаул (3852)73-04-60
Белгород (4722)40-23-64
Брянск (4832)59-03-52
Владивосток (423)249-28-31
Волгоград (844)278-03-48
Вологда (8172)26-41-59
Воронеж (473)204-51-73
Екатеринбург (343)384-55-89
Иваново (4932)77-34-06

Ижевск (3412)26-03-58
Иркутск (395)279-98-46
Казань (843)206-01-48
Калининград (4012)72-03-81
Калуга (4842)92-23-67
Кемерово (3842)65-04-62
Киров (8332)68-02-04
Краснодар (861)203-40-90
Красноярск (391)204-63-61
Курск (4712)77-13-04
Липецк (4742)52-20-81

Киргизия (996)312-96-26-47

Магнитогорск (3519)55-03-13
Москва (495)268-04-70
Мурманск (8152)59-64-93
Набережные Челны (8552)20-53-41
Нижний Новгород (831)429-08-12
Новокузнецк (3843)20-46-81
Новосибирск (383)227-86-73
Омск (3812)21-46-40
Орел (4862)44-53-42
Оренбург (3532)37-68-04
Пенза (8412)22-31-16

Россия (495)268-04-70

Пермь (342)205-81-47
Ростов-на-Дону (863)308-18-15
Рязань (4912)46-61-64
Самара (846)206-03-16
Санкт-Петербург (812)309-46-40
Саратов (845)249-38-78
Севастополь (8692)22-31-93
Симферополь (3652)67-13-56
Смоленск (4812)29-41-54
Сочи (862)225-72-31
Ставрополь (8652)20-65-13

Казахстан (772)734-952-31

Сургут (3462)77-98-35
Тверь (4822)63-31-35
Томск (3822)98-41-53
Тула (4872)74-02-29
Тюмень (3452)66-21-18
Ульяновск (8422)24-23-59
Уфа (347)229-48-12
Хабаровск (4212)92-98-04
Челябинск (351)202-03-61
Череповец (8202)49-02-64
Ярославль (4852)69-52-93

www.panblast.nt-rt.ru | | pav@nt-rt.ru