

Архангельск (8182)63-90-72  
Астана (7172)727-132  
Астрахань (8512)99-46-04  
Барнаул (3852)73-04-60  
Белгород (4722)40-23-64  
Брянск (4832)59-03-52  
Владивосток (423)249-28-31  
Волгоград (844)278-03-48  
Вологда (8172)26-41-59  
Воронеж (473)204-51-73  
Екатеринбург (343)384-55-89  
Иваново (4932)77-34-06

Ижевск (3412)26-03-58  
Иркутск (395)279-98-46  
Казань (843)206-01-48  
Калининград (4012)72-03-81  
Калуга (4842)92-23-67  
Кемерово (3842)65-04-62  
Киров (8332)68-02-04  
Краснодар (861)203-40-90  
Красноярск (391)204-63-61  
Курск (4712)77-13-04  
Липецк (4742)52-20-81

Киргизия (996)312-96-26-47

Магнитогорск (3519)55-03-13  
Москва (495)268-04-70  
Мурманск (8152)59-64-93  
Набережные Челны (8552)20-53-41  
Нижний Новгород (831)429-08-12  
Новокузнецк (3843)20-46-81  
Новосибирск (383)227-86-73  
Омск (3812)21-46-40  
Орел (4862)44-53-42  
Оренбург (3532)37-68-04  
Пенза (8412)22-31-16

Россия (495)268-04-70

Пермь (342)205-81-47  
Ростов-на-Дону (863)308-18-15  
Рязань (4912)46-61-64  
Самара (846)206-03-16  
Санкт-Петербург (812)309-46-40  
Саратов (845)249-38-78  
Севастополь (8692)22-31-93  
Симферополь (3652)67-13-56  
Смоленск (4812)29-41-54  
Сочи (862)225-72-31  
Ставрополь (8652)20-65-13

Казахстан (772)734-952-31

Сургут (3462)77-98-35  
Тверь (4822)63-31-35  
Томск (3822)98-41-53  
Тула (4872)74-02-29  
Тюмень (3452)66-21-18  
Ульяновск (8422)24-23-59  
Уфа (347)229-48-12  
Хабаровск (4212)92-98-04  
Челябинск (351)202-03-61  
Череповец (8202)49-02-64  
Ярославль (4852)69-52-93

[www.panblast.nt-rt.ru](http://www.panblast.nt-rt.ru) | | [pav@nt-rt.ru](mailto:pav@nt-rt.ru)

# Технические характеристики на пескоструйные камеры специальные КОМПАНИИ **PanBlast**



## MB600-2 Blast Pots



### Complementary Products



Blast Hoses



Titan II SAR



Couplings & Nozzle Holders



Whip Check Cables



ATN Blast Nozzles



VisiFlo Premium Airline Filter



Electric Remote Conversion Kit



Blasting Suit & Gloves



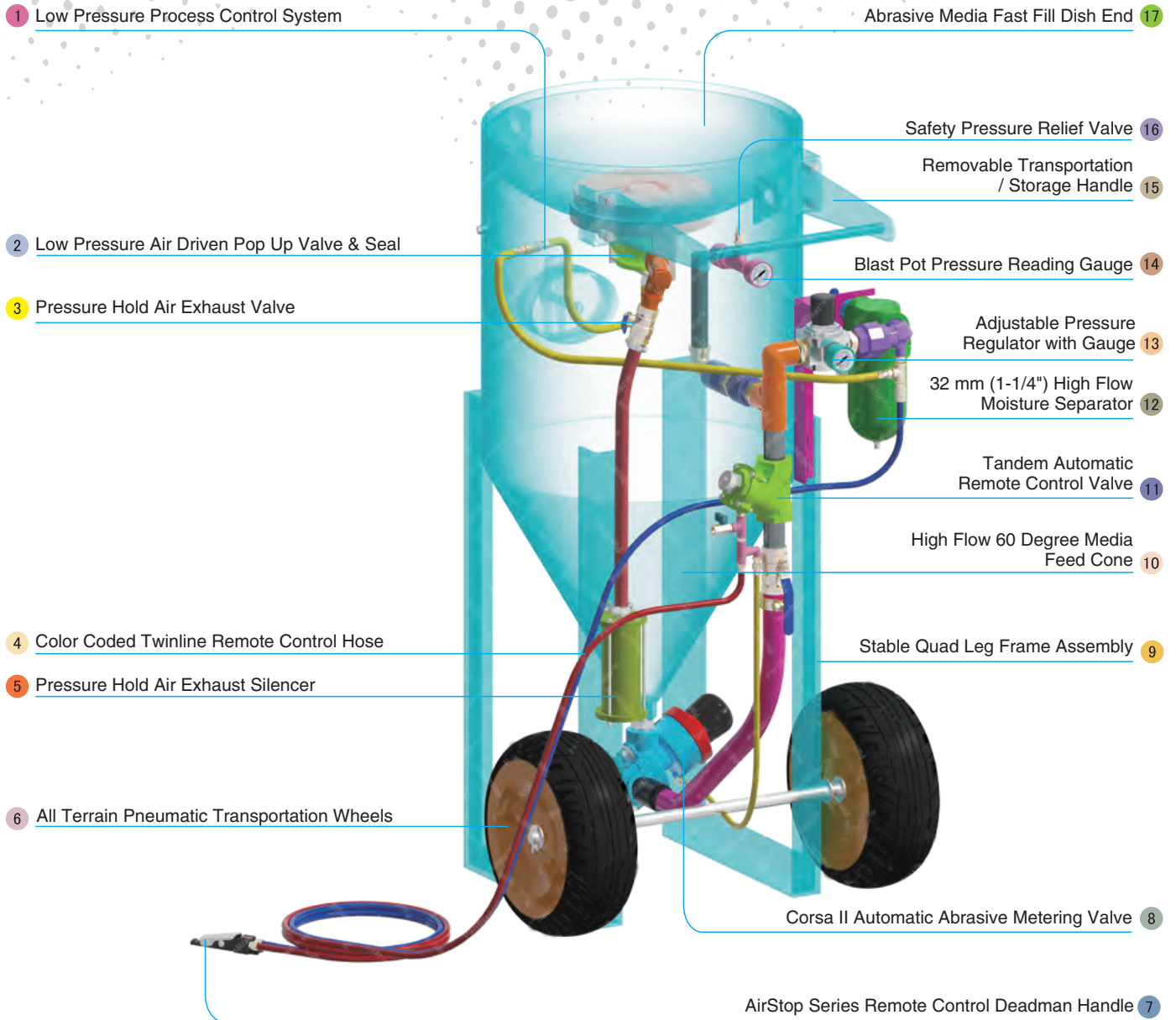
### Product Features

PanBlast™ MB600-2 Blast Pots are available in multiple configurations and specifications to suit varying market requirements worldwide. The MB600-2 is a large-capacity, automatic blast pot, suitable for low pressure blasting applications.

- ▶ Designed and manufactured in accordance with international standards and requirements.
- ▶ Third party pressure vessel certificates available on request.
- ▶ Tandem remote air inlet and manual exhaust valve, for fast and efficient operation.
- ▶ AirStop non-bleed type pneumatic deadman handle.
- ▶ Corsa II abrasive control valve provides precise control and immediate shut off.
- ▶ Optional abrasive cut off for compressed air blow down.
- ▶ 60° pot shell cone, for improved abrasive flow. Wide, pneumatic wheels.
- ▶ Moisture trap, exhaust muffler and main air isolation valves standard.
- ▶ Low pressure pop up valve is supplied standard.
- ▶ 200 litres (6 ft³) abrasive capacity, 120 psi pressure rating.
- ▶ 32 mm (1-1/4") fittings.

### Common Applications

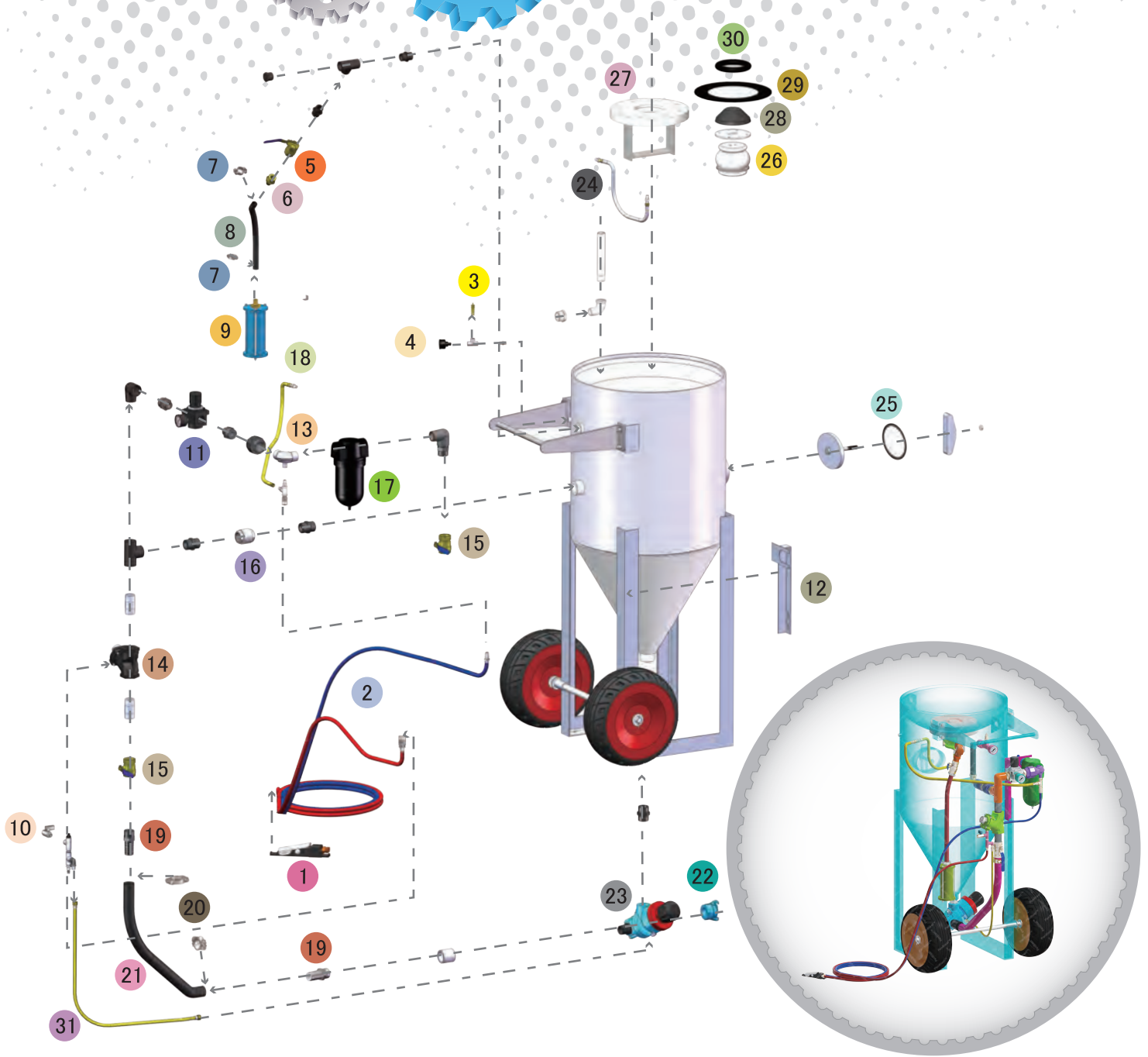
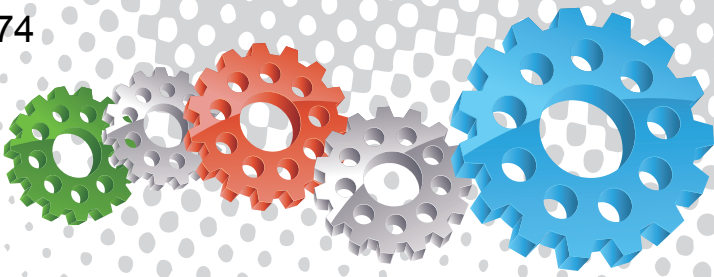
- ▶ Blasting with plastic media, baking soda and other light density abrasives.
- ▶ Shot peening applications.
- ▶ Blasting with very fine abrasives.
- ▶ Low pressure blasting to prevent substrate damage.



## Component Highlights



- |   |  |  |
|---|--|--|
| 1 Low Pressure Process Control System         | 7 AirStop Series Remote Control Deadman Handle | 13 Adjustable Pressure Regulator with Gauge  |
| 2 Low Pressure Air Driven Pop Up Valve & Seal | 8 Corsa II Automatic Abrasive Metering Valve   | 14 Blast Pot Pressure Reading Gauge          |
| 3 Pressure Hold Air Exhaust Valve             | 9 Stable Quad Leg Frame Assembly               | 15 Removable Transportation / Storage Handle |
| 4 Color Coded Twinline Remote Control Hose    | 10 High Flow 60 Degree Media Feed Cone         | 16 Safety Pressure Relief Valve              |
| 5 Pressure Hold Air Exhaust Silencer          | 11 Tandem Automatic Remote Control Valve       | 17 Abrasive Media Fast Fill Dish End         |
| 6 All Terrain Pneumatic Transportation Wheels | 12 32 mm (1-1/4") High Flow Moisture Separator |  |



## Assemblies

Stock Code	Description	Dry Weight	Abrasive Capacity	Piping Size
BEP-PS-0022-00	MB600-2/BS Tandem Corsa II-US Airstop	245 kg (540 lbs)	200 litres (6 ft³)	32 mm (1-1/4")
BEP-PS-PB-0012	MB600-2/AU Tandem Corsa II-US AirStop	245 kg (540 lbs)	200 litres (6 ft³)	32 mm (1-1/4")





## Parts List



Description	Qty	Description	Qty	Description	Qty
1 Airstop Pneumatic Control Handle	1	12 Support Bracket	1	23 Corsa II 1-1/4" With Urethane Sleeve	1
2 20 m (66') Twinline Hose Assembly	1	13 Elbow	1	24 Connecting Hose	1
3 1/2" BSP-125 PSI Pressure Relief Valve	1	14 1-1/4" Tandem NPT Valve Assembly	1	25 Blast Pot-H/Hole 192x144 -Sealing Gasket	1
4 6 mm (1/4") Pressure Gauge - Rear Entry	1	15 32 mm (1-1/4") Ball Valve	2	26 Air Spring	1
5 25 mm (1") Ball Valve	1	16 32 mm (1-1/4") Non Return Valve	1	27 Flanged Bracket	1
6 Hose Barb	1	17 32 mm (1-1/4") Port Moisture Separator	1	28 Pop-Up Valve	1
7 Hose Clamp	2	18 Connecting Hose	1	29 Gasket	1
8 Blast Hose 19 mm x 34 mm x 20 m L2	0.4 m	19 KC Nipple	2	30 Pop Up Valve Seating Ring	1
9 Exhaust Muffler	1	20 Hose Clamp	2	31 Connecting Hose	1
10 Mini Ball Valve	1	21 32 mm (1-1/4") Air Supply Hose	0.7 m		
11 25 mm(1") Pressure Regulator with Gauge	1	22 NTC-1 Nylon Threaded Pot Coupling	1		



## SB316-2/AU/MY/NZ Blast Pot



### Product Features

PanBlast™ SB Series Blast Pots are available in multiple configurations and specifications to suit varying market requirements worldwide. The SB316-2 is a medium-capacity, automatic blast pot, suitable for low pressure blasting applications.

- ▶ Multiport sleeve of different orifice size for different abrasives size.
- ▶ Optional AIN nozzle or wet head to suppress dust and dissolve sodium bicarbonate during soda blast.
- ▶ Designed and manufactured in accordance with international standards and requirements.
- ▶ Third party pressure vessel certificates available on request.
- ▶ Separate Tandem air inlet and exhaust valves, for fast and efficient operation.
- ▶ AirStop non-bleed type pneumatic deadman handle.
- ▶ Corsa II abrasive control valve provides precise control and immediate shut off.
- ▶ Optional abrasive cut off for compressed air blow down.
- ▶ Pneumatic vibratory motor, for improved abrasive media flow.
- ▶ Moisture trap, exhaust muffler and main air isolation valves standard.
- ▶ Durable solid rubber wheels.
- ▶ Differential pressure adjustment to regulate sodium bicarbonate flow rate in accordance to pre determined differential pressure to flow rate correlation.
- ▶ 100 litres (3 ft<sup>3</sup>) abrasive capacity, 125 psi pressure rating.
- ▶ 32 mm (1-1/4") fittings.

### Common Applications

- ▶ Blasting with sodium bicarbonate with AIN nozzle or wet head eliminating abrasives residue.
- ▶ Blasting with very fine abrasives.

### Complementary Products



Blast Hoses



ATN Blast Nozzles



Titan II SAR



AIN Blast Nozzles



Couplings & Nozzle Holders



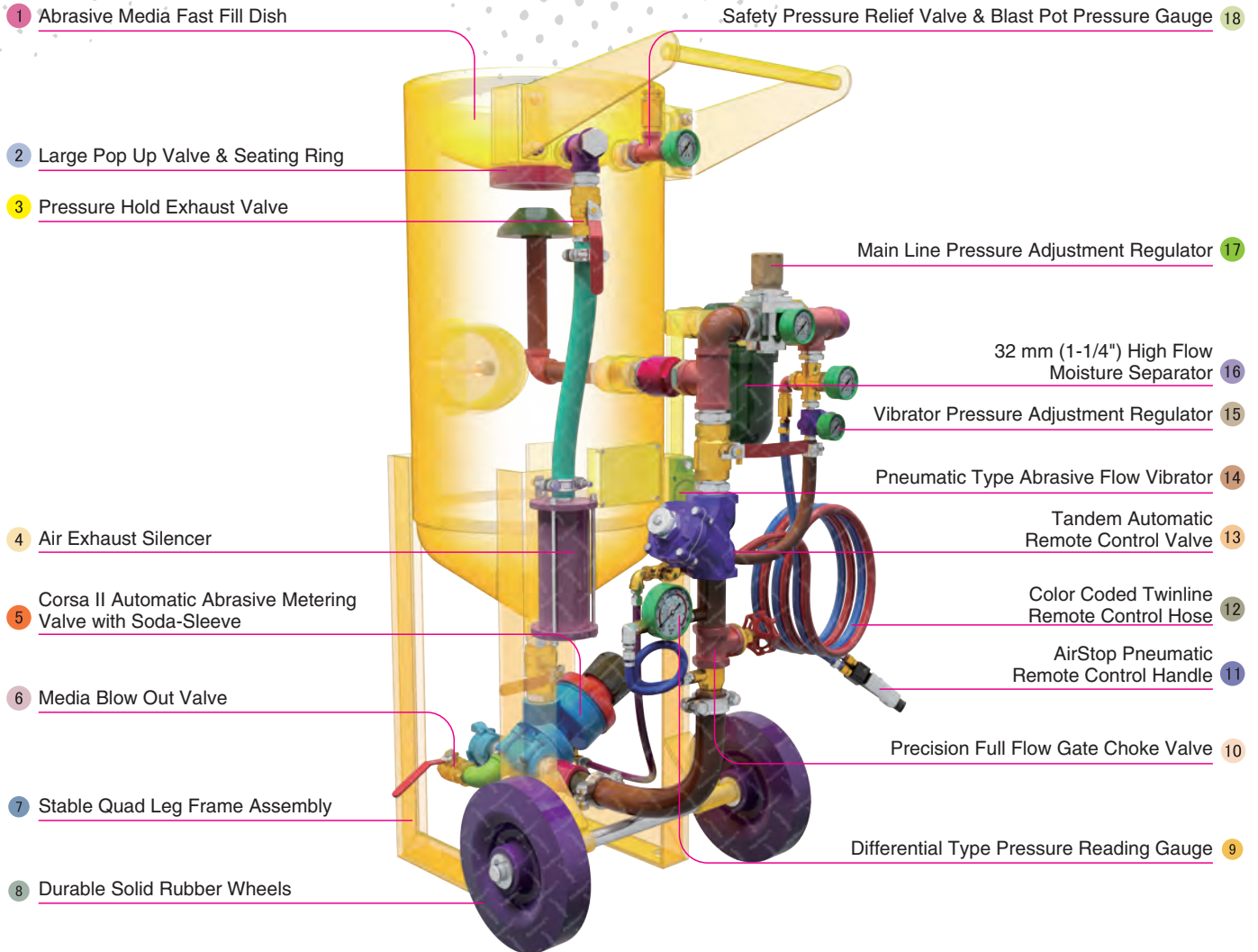
Air Cooling Controller



Wet Head



Blasting Suit & Gloves

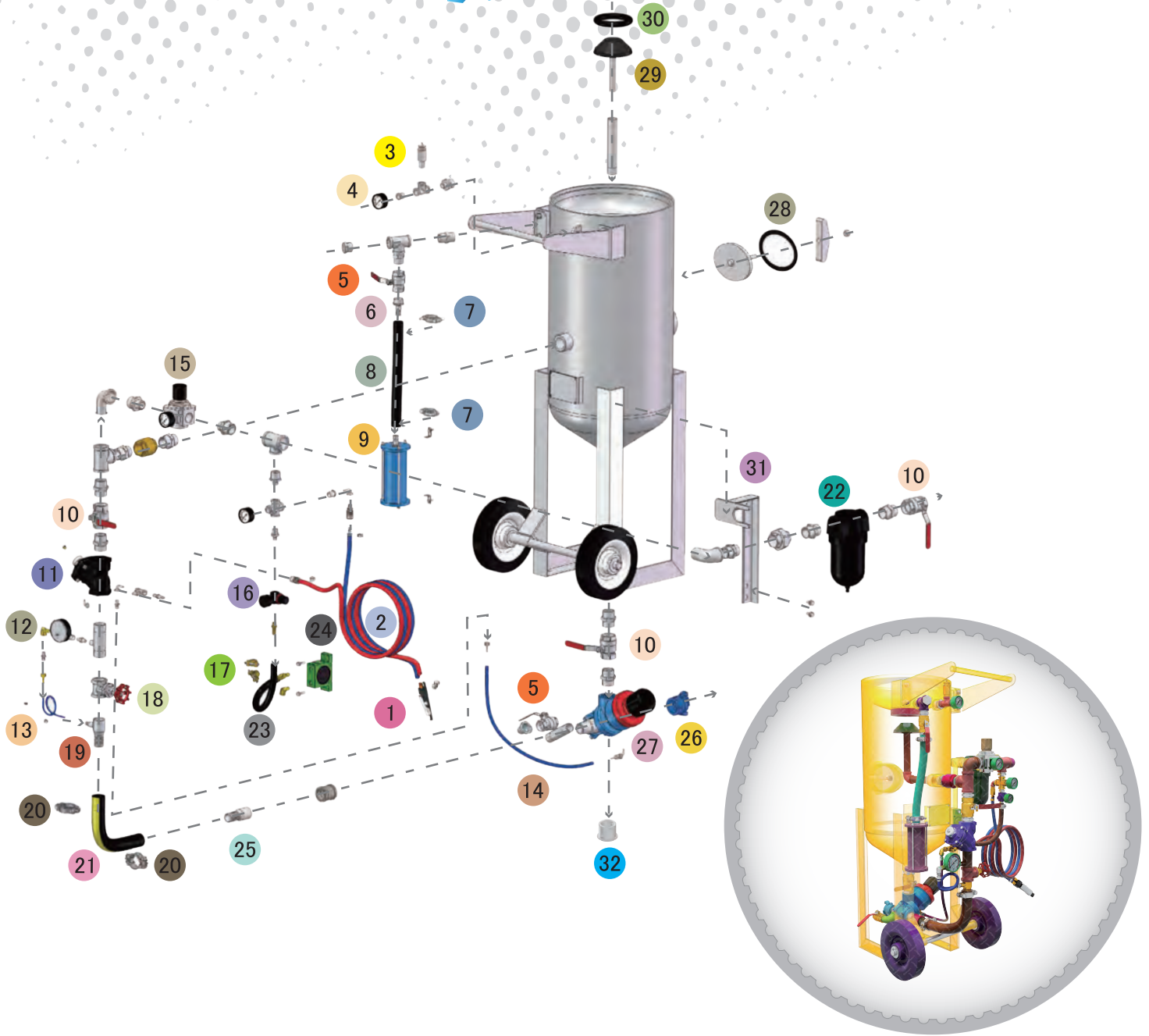
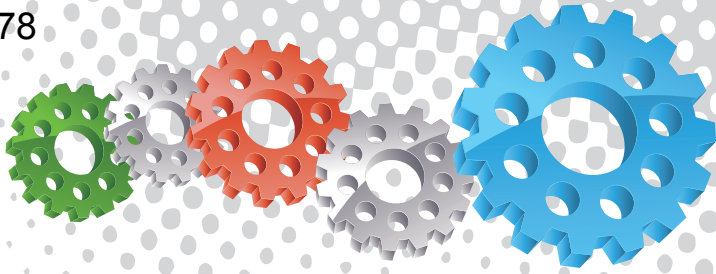


## Component Highlights



- |   |   |   |
|---|---|---|
| 1 Abrasive Media Fast Fill Dish                               | 7 Stable Quad Leg Frame Assembly            | 13 Tandem Automatic Remote Control Valve          |
| 2 Large Pop Up Valve & Seating Ring                           | 8 Durable Solid Rubber Wheels               | 14 Pneumatic Type Abrasive Flow Vibrator          |
| 3 Pressure Hold Exhaust Valve                                 | 9 Differential Type Pressure Reading Gauge  | 15 Vibrator Pressure Adjustment Regulator         |
| 4 Air Exhaust Silencer  | 10 Precision Full Flow Gate Choke Valve     | 16 32 mm (1-1/4") High Flow Moisture Separator    |
| 5 Corsa II Automatic Abrasive Metering Valve with Soda-Sleeve | 11 AirStop Pneumatic Remote Control Handle  | 17 Safety Pressure Relief Valve & Blast Pot Gauge |
| 6 Media Blow Out Valve  | 12 Color Coded Twinline Remote Control Hose |   |





## Assembly

Stock Code	Description	Dry Weight	Abrasive Capacity	Piping Size
BEP-PS-0028-00	SB316-2/AU/MY/NZ Tandem Corsa II-SS AirStop	145 kg (320 lbs)	100 litres (3 ft³)	32 mm (1-1/4")





## Parts List



Description	Qty	Description	Qty	Description	Qty
1 Airstop Pneumatic Control Handle	1	12 Differential Gauge	1	23 Abrasive Hose	0.35 m
2 20 m (66') Twinline Hose Assembly	1	13 Connecting Hose	1	24 Pneumatic Vibrator	1
3 1/2" BSP-125 PSI Pressure Relief Valve	1	14 Connecting Hose 25 mm(1") Pressure Regulator With Gauge	1	25 KC Nipple	1
4 6 mm (1/4") Pressure Gauge - Rear Entry	2	15 6 mm(1/4") Pressure Regulator With Gauge	1	26 NTC-1 Nylon Threaded Pot Coupling	1
5 25 mm (1") Ball Valve	2	16 6 mm(1/4") Pressure Regulator With Gauge	1	27 Corsa II 1-1/4" With Tungsten Sleeve	1
6 Hose Barb	1	17 Hose Clamp	2	28 Blast Pot-H/Hole 192 x 144 -Sealing Gasket	1
7 Hose Clamp	2	18 32 mm (1-1/4") Gate Valve	1	29 Pop Up Valve - Stem Type	1
8 Blast Hose 19mm x 34mm x 20m L2	0.4 m	19 KC Nipple	1	30 Pop Up Valve Seating Ring	1
9 Exhaust Muffler	1	20 Hose Clamp	2	31 Support Bracket	1
10 32 mm (1-1/4") Ball Valve	3	21 32 mm (1-1/4") Air Supply Hose	0.55 m	32 Multi Ported Sleeve	1
11 1-1/4" Tandem NPT Valve Assembly	1	22 32 mm (1-1/4") Port Moisture Separator	1		



## SB600-2/MY Blast Pot



### Complementary Products



Blast Hoses



Titan II SAR



Couplings & Nozzle Holders



Wet Head



ATN Blast Nozzles



AIN Blast Nozzles



Air Cooling Controller



Blasting Suit & Gloves



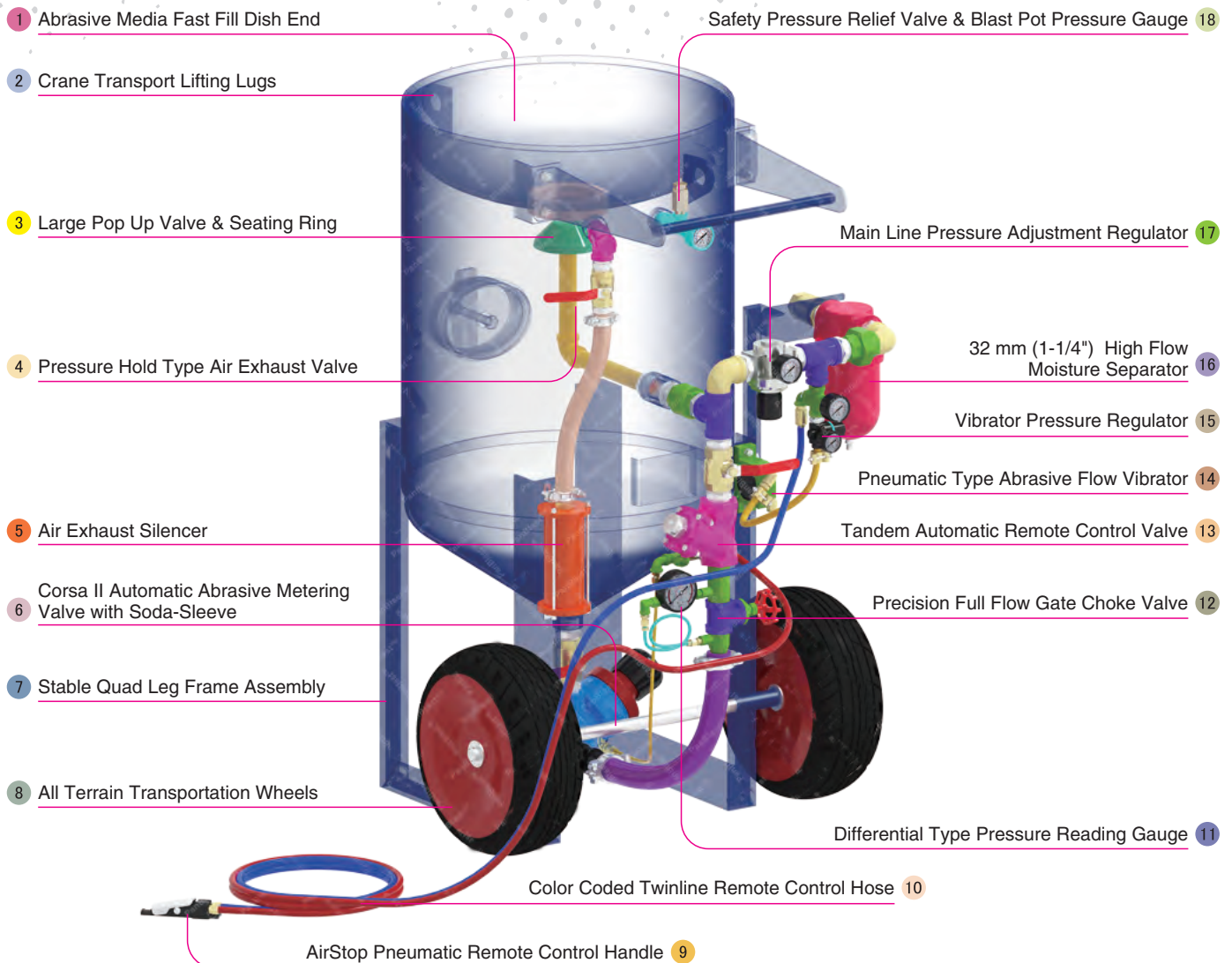
### Product Features

PanBlast™ SB Series Blast Pots are available in multiple configurations and specifications to suit varying market requirements worldwide. The SB600-2 is a large-capacity, automatic blast pot, suitable for low pressure blasting applications.

- ▶ Multiport sleeve of different orifice size for different abrasives size.
- ▶ Optional AIN nozzle or wet head to suppress dust and dissolve sodium bicarbonate during soda blasting.
- ▶ Designed and manufactured in accordance with international standards and requirements.
- ▶ Third party pressure vessel certificates available on request.
- ▶ Separate Tandem air inlet and exhaust valves, for fast and efficient operation.
- ▶ AirStop non-bleed type pneumatic deadman handle.
- ▶ Corsa II abrasive control valve provides precise control and immediate shut off.
- ▶ Optional abrasive cut off for compressed air blow down.
- ▶ Pneumatic vibratory motor, for improved abrasive media flow.
- ▶ Moisture trap, exhaust muffler and main air isolation valves standard.
- ▶ Wide, pneumatic wheels.
- ▶ Differential pressure adjustment to regulate sodium bicarbonate flow rate in accordance to pre determined differential pressure to flow rate correlation.
- ▶ 200 litres (6 ft<sup>3</sup>) abrasive capacity, 125 psi pressure rating.
- ▶ 32 mm (1-1/4") fittings.

### Common Applications

- ▶ Blasting with sodium bicarbonate with AIN nozzle or wet head eliminating abrasives residue.
- ▶ Blasting with very fine abrasives.

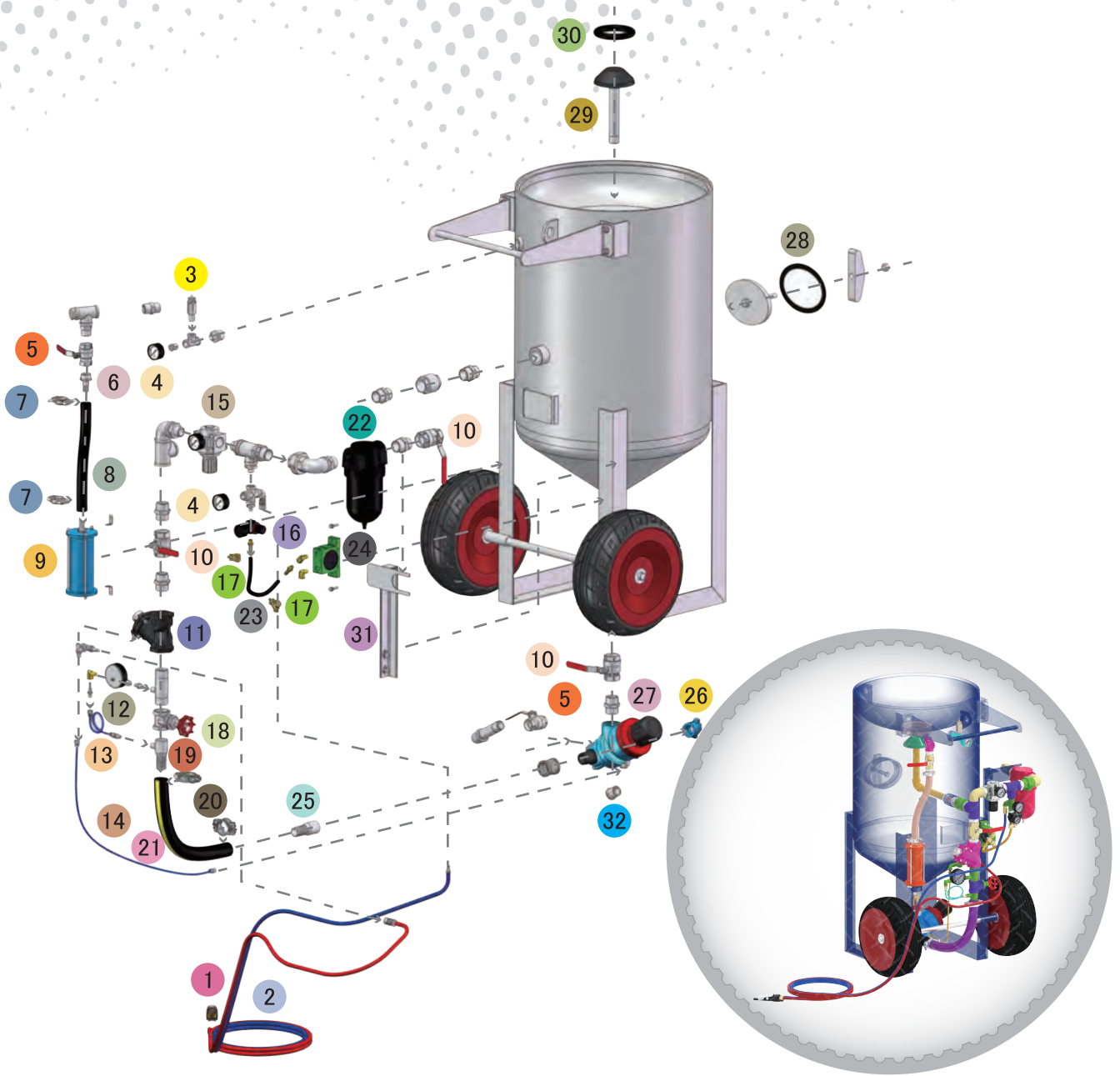
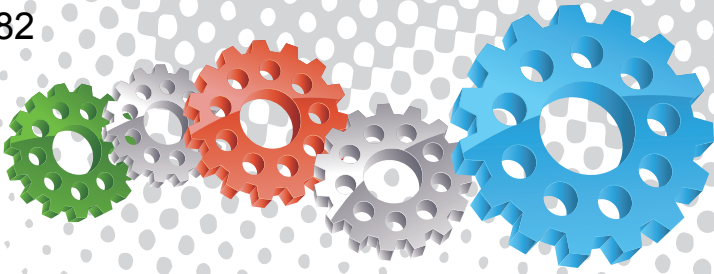


## Component Highlights



- |   |   |  |
|---|---|--|
| 1 Abrasive Media Fast Fill Dish End                           | 7 Stable Quad Leg Frame Assembly            | 13 Tandem Automatic Remote Control Valve                   |
| 2 Crane Transport Lifting Lugs                                | 8 All Terrain Transportation Wheels         | 14 Pneumatic Type Abrasive Flow Vibrator                   |
| 3 Large Pop Up Valve & Seating Ring                           | 9 AirStop Pneumatic Remote Control Handle   | 15 Vibrator Pressure Regulator                             |
| 4 Pressure Hold Type Air Exhaust Valve                        | 10 Color Coded Twinline Remote Control Hose | 16 32 mm (1-1/4") High Flow Moisture Separator             |
| 5 Air Exhaust Silencer  | 11 Differential Type Pressure Reading Gauge | 17 Main Line Pressure Adjustment Regulator                 |
| 6 Corsa II Automatic Abrasive Metering Valve with Soda-Sleeve | 12 Precision Full Flow Gate Choke Valve     | 18 Safety Pressure Relief Valve & Blast Pot Pressure Gauge |





## Assembly

Stock Code	Description	Dry Weight	Abrasive Capacity	Piping Size
BEP-PS-0021-00	SB600-2/MY Tandem Corsa II-SS AirStop	240 kg (529 lbs)	200 litres (6 ft³)	32 mm (1-1/4")





## Parts List



Description	Qty	Description	Qty	Description	Qty
1 Airstop Pneumatic Control Handle	1	12 Differential Gauge	1	23 Abrasive Hose	0.35 m
2 20 m (66') Twinline Hose Assembly	1	13 Connecting Hose	1	24 Pneumatic Vibrator	1
3 1/2" BSP-125 PSI Pressure Relief Valve	1	14 Connecting Hose	1	25 KC Nipple	1
4 6 mm (1/4") Pressure Gauge - Rear Entry	2	15 25 mm(1") Pressure Regulator With Gauge	1	26 NTC-1 Nylon Threaded Pot Coupling	1
5 25 mm (1") Ball Valve	2	16 6 mm(1/4") Pressure Regulator With Gauge	1	27 Corsa II 1-1/4" With Tungsten Sleeve	1
6 Hose Barb	1	17 Hose Clamp	2	28 Blast Pot-H/Hole 192x144 -Sealing Gasket	1
7 Hose Clamp	2	18 32 mm (1-1/4") Gate Valve	1	29 Pop Up Valve - Stem Type	1
8 Blast Hose 19 mm x 34 mm x 20 m L2 0.4 m	1	19 KC Nipple	1	30 Pop Up Valve Seating Ring	1
9 Exhaust Muffler	1	20 Hose Clamp	2	31 Support Bracket	1
10 32 mm (1-1/4") Ball Valve	3	21 32 mm (1-1/4") Air Supply Hose	0.55 m	32 Multi Ported Sleeve	1
11 1-1/4" Tandem NPT Valve Assembly	1	22 32 mm (1-1/4") Port Moisture Separator	1		



## CB800-D/BS Blast Pot



### Complementary Products



Blast Hoses



Titan II SAR



Couplings & Nozzle Holders



Whip Check Cables



ATN Blast Nozzles



VisiFlo Premium Airline Filter



Electric Remote Conversion Kit



Blasting Suit & Gloves



### Product Features

PanBlast™ CB Series Blast Pots are available in multiple configurations and specifications to suit varying market requirements worldwide. The CB800 is an ultra-size, automatic double chamber, double outlet blast pot, suitable for high production large-scale blasting operations requiring maximum equipment uptime.

- ▶ Designed and manufactured in accordance with international standards and requirements.
- ▶ Separate Tandem air inlet and exhaust valves, for fast and efficient operation.
- ▶ AirStop non-bleed type pneumatic deadman handles.
- ▶ Corsa II abrasive control valves provides precise control and immediate shut off.
- ▶ Abrasive cut off for compressed air blow down.
- ▶ Moisture trap, exhaust muffler and main air isolation valves standard.
- ▶ 300 litres (10.6 ft³) abrasive capacity, 125 psi pressure rating.
- ▶ 50 mm (2") inlet fittings, single or double blasting outlets.
- ▶ Optional electrical deadman control for quicker response and/or extended control distance.

### Common Applications

- ▶ Automated high production blasting systems.
- ▶ On site industrial and commercial blasting.
- ▶ Blast and painting contractor yard work.
- ▶ Blast room applications with or without abrasive recovery systems.
- ▶ In situ blasting in shipyards and slipways.





## MB600-2 Blast Pots



### Complementary Products



Blast Hoses



Titan II SAR



Couplings & Nozzle Holders



Whip Check Cables



ATN Blast Nozzles



VisiFlo Premium Airline Filter



Electric Remote Conversion Kit



Blasting Suit & Gloves



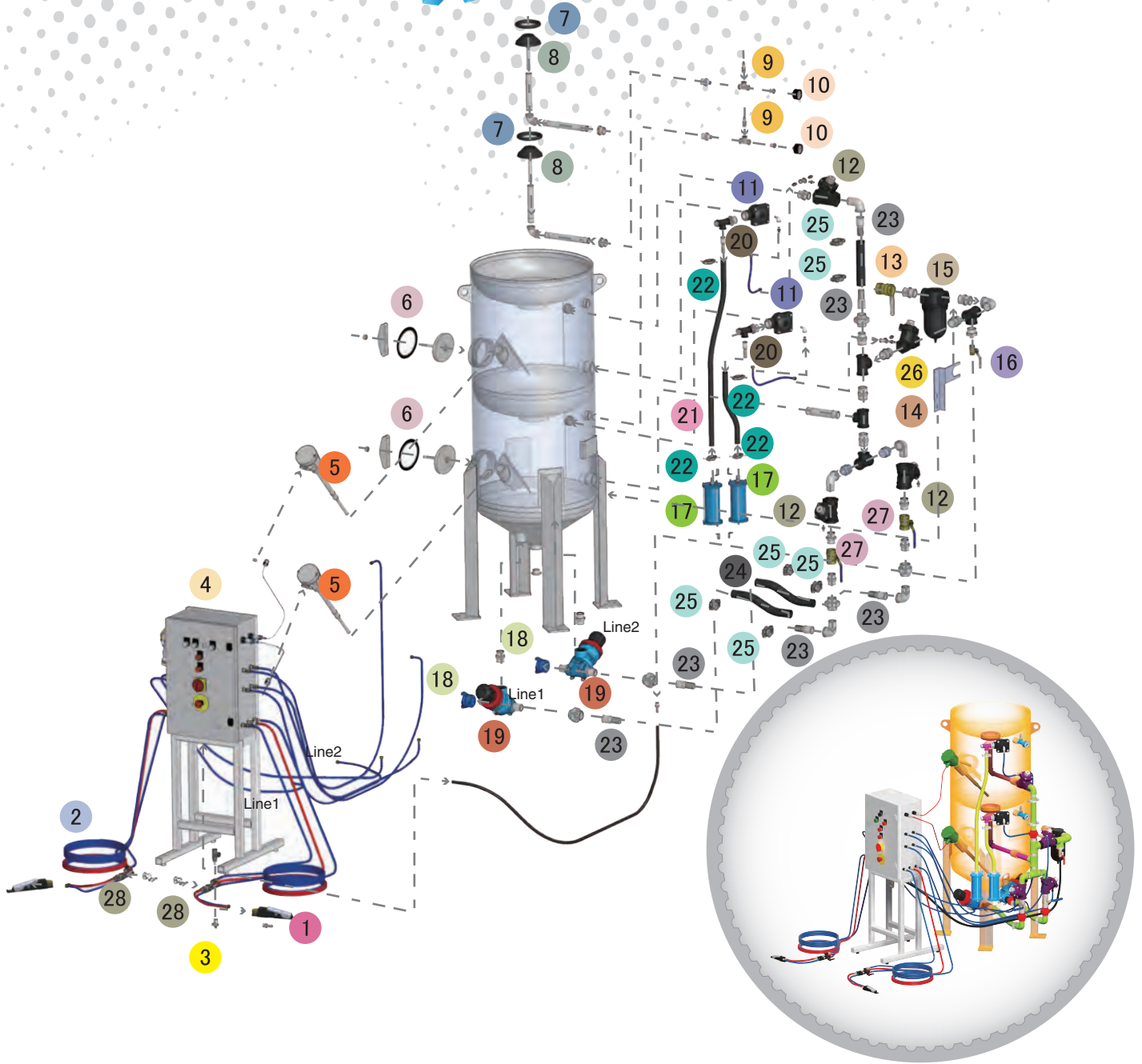
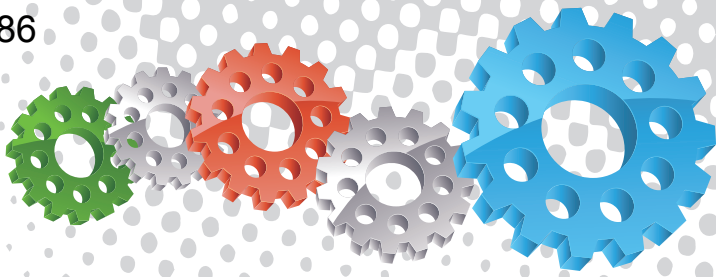
### Product Features

PanBlast™ MB600-2 Blast Pots are available in multiple configurations and specifications to suit varying market requirements worldwide. The MB600-2 is a large-capacity, automatic blast pot, suitable for low pressure blasting applications.

- ▶ Designed and manufactured in accordance with international standards and requirements.
- ▶ Third party pressure vessel certificates available on request.
- ▶ Tandem remote air inlet and manual exhaust valve, for fast and efficient operation.
- ▶ AirStop non-bleed type pneumatic deadman handle.
- ▶ Corsa II abrasive control valve provides precise control and immediate shut off.
- ▶ Optional abrasive cut off for compressed air blow down.
- ▶ 60° pot shell cone, for improved abrasive flow. Wide, pneumatic wheels.
- ▶ Moisture trap, exhaust muffler and main air isolation valves standard.
- ▶ Low pressure pop up valve is supplied standard.
- ▶ 200 litres (6 ft³) abrasive capacity, 120 psi pressure rating.
- ▶ 32 mm (1-1/4") fittings.

### Common Applications

- ▶ Blasting with plastic media, baking soda and other light density abrasives.
- ▶ Shot peening applications.
- ▶ Blasting with very fine abrasives.
- ▶ Low pressure blasting to prevent substrate damage.



## Assembly

Stock Code	Description	Dry Weight	Abrasive Capacity	Piping Size
BEP-PS-0082-00	CB800-D/BS Tandem Corsa-II-TS DV	415 kg (915 lbs)	300 litres (10.6 ft³)	38 mm (1-1/2")





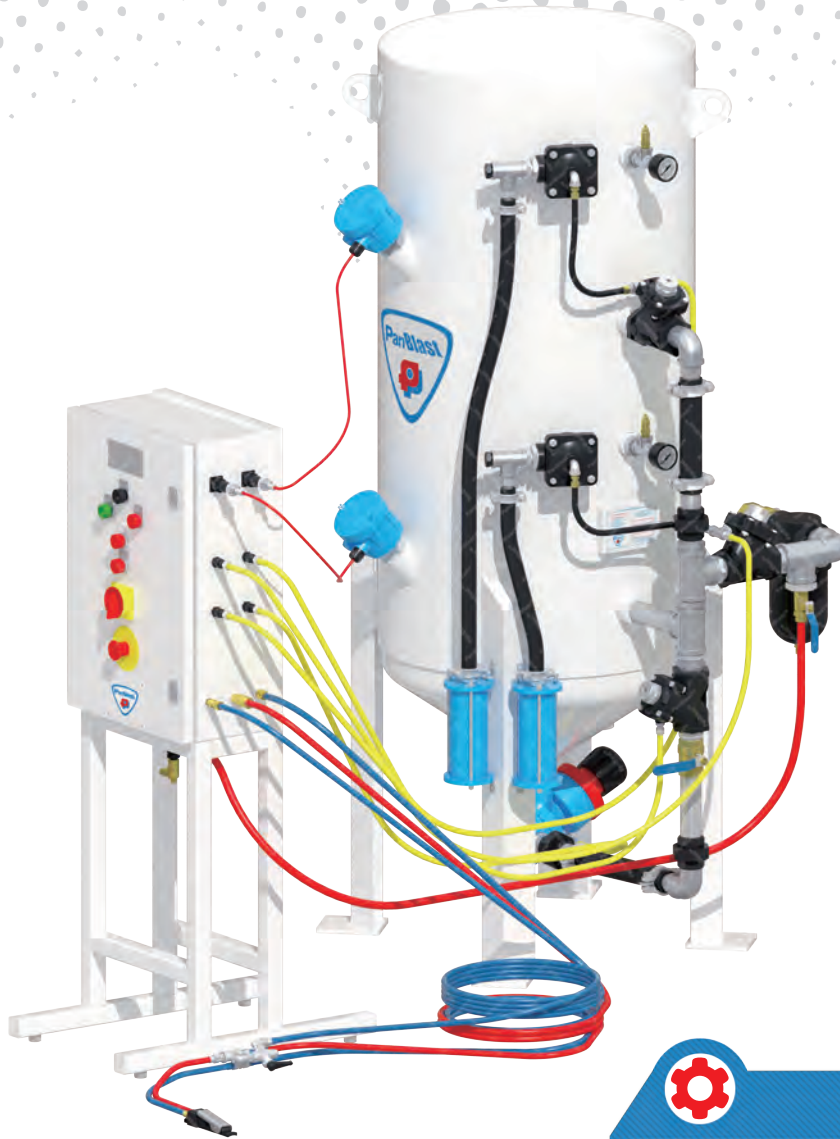
## Parts List



Description	Qty	Description	Qty	Description	Qty
1 AirStop Pneumatic Control Handle	2	11 1" NPT Diaphragm Dump Valve	2	21 Blast Hose 19 mmx34 mmx20 m L2	1.4 m
2 20 m (66') Twinline Hose Assembly	2	12 1-1/4" Tandem NPT Valve Assembly	3	22 Hose Clamp	4
3 Mini Ball Valve	1	13 Ball Valve	1	23 KC Nipple	6
4 CB800 Cycle Controller Pneu2	1	14 Support Bracket	1	24 32 mm (1-1/4") Air Supply Hose	1 m
5 Level Sensor	2	15 50 mm (2") Port Moisture Separator	1	25 Hose Clamp	6
6 Blast Pot-H/Hole 192x144 -Sealing Gasket	2	16 13 mm (1/2") Ball Valve	1	26 1-1/2" Tandem NPT Valve Assembly	1
7 Pop Up Valve Seating Ring	2	17 Exhaust Muffler	2	27 32 mm (1-1/4") Ball Valve	2
8 Pop Up Valve - Stem Type	2	18 NTC-1 Nylon Threaded Pot Coupling	2	28 Air Blow Down Kit W/O Corsa II	2
9 1/2" BSP - 125 PSI Pressure Relief Valve	2	19 Corsa II 1-1/4" With Tungsten Sleeve	2		
10 6 mm (1/4") Pressure Gauge - Rear Entry	2	20 KC Nipple	2		



## CB800-S/BS Blast Pot



### Product Features

PanBlast™ CB Series Blast Pots are available in multiple configurations and specifications to suit varying market requirements worldwide. The CB800 is an ultra-size, automatic double chamber, single outlet blast pot, suitable for high production large-scale blasting operations requiring maximum equipment uptime.

- ▶ Designed and manufactured in accordance with international standards and requirements.
- ▶ Separate tandem air inlet and exhaust valves, for fast and efficient operation.
- ▶ AirStop non-bleed type pneumatic deadman handles.
- ▶ Corsa II abrasive control valves provides precise control and immediate shut off.
- ▶ Optional abrasive cut off for compressed air blow down.
- ▶ Moisture trap, exhaust muffler and main air isolation valves standard.
- ▶ 300 litres (10.6 ft<sup>3</sup>) abrasive capacity, 125 psi pressure rating.
- ▶ 38 mm (1-1/2") fittings, single or double blasting outlets.
- ▶ Optional electrical deadman control for faster response time.

### Common Applications

- ▶ Automated high production blasting systems.
- ▶ On site industrial and commercial blasting.
- ▶ Blast and painting contractor yard work.
- ▶ Blast room applications with or without abrasive recovery systems.
- ▶ In situ blasting in shipyards and slipways.

## Complementary Products



Blast Hoses



Titan II SAR



Couplings & Nozzle Holders



Whip Check Cables



ATN Blast Nozzles



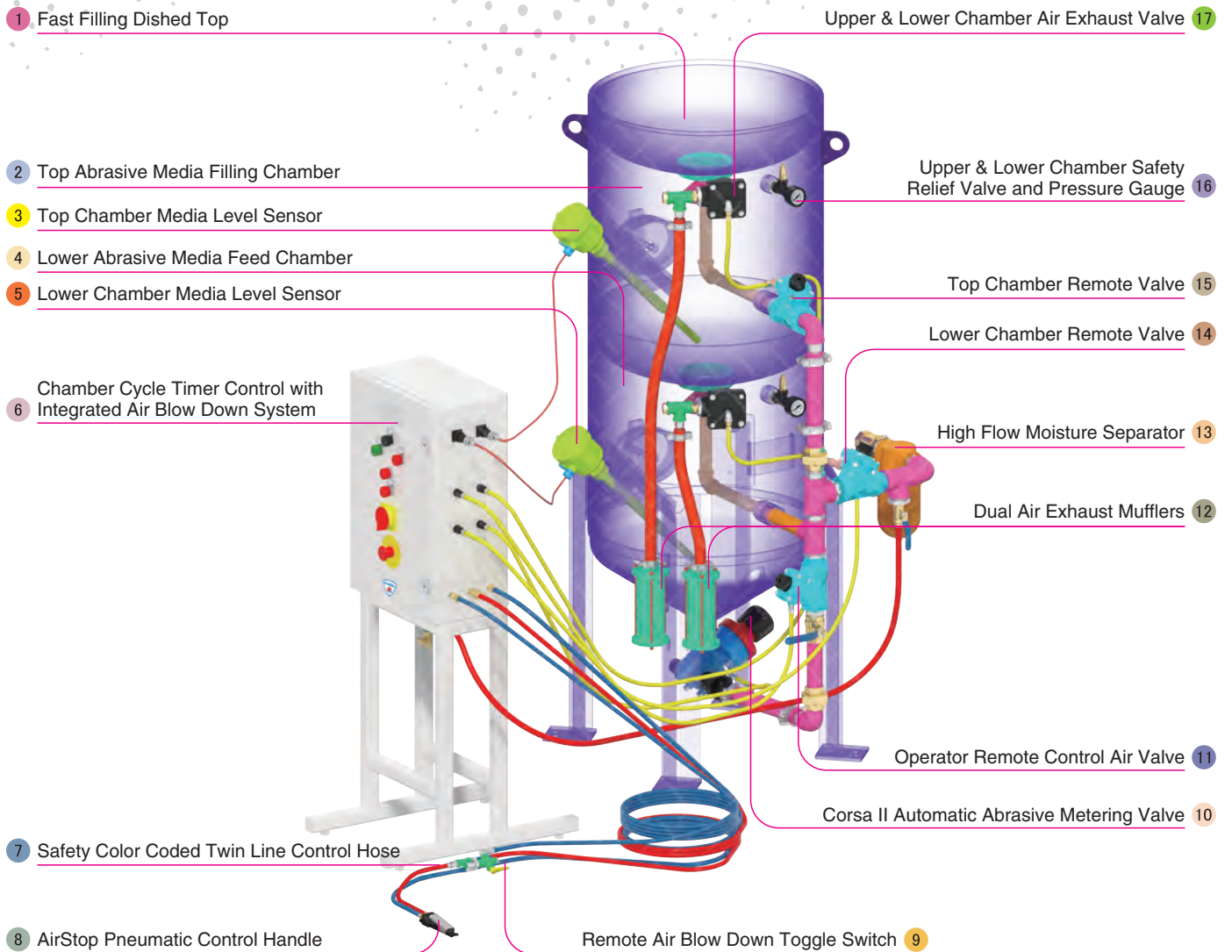
VisiFlo Premium Airline Filter



Electric Remote Conversion Kit



Blasting Suit & Gloves

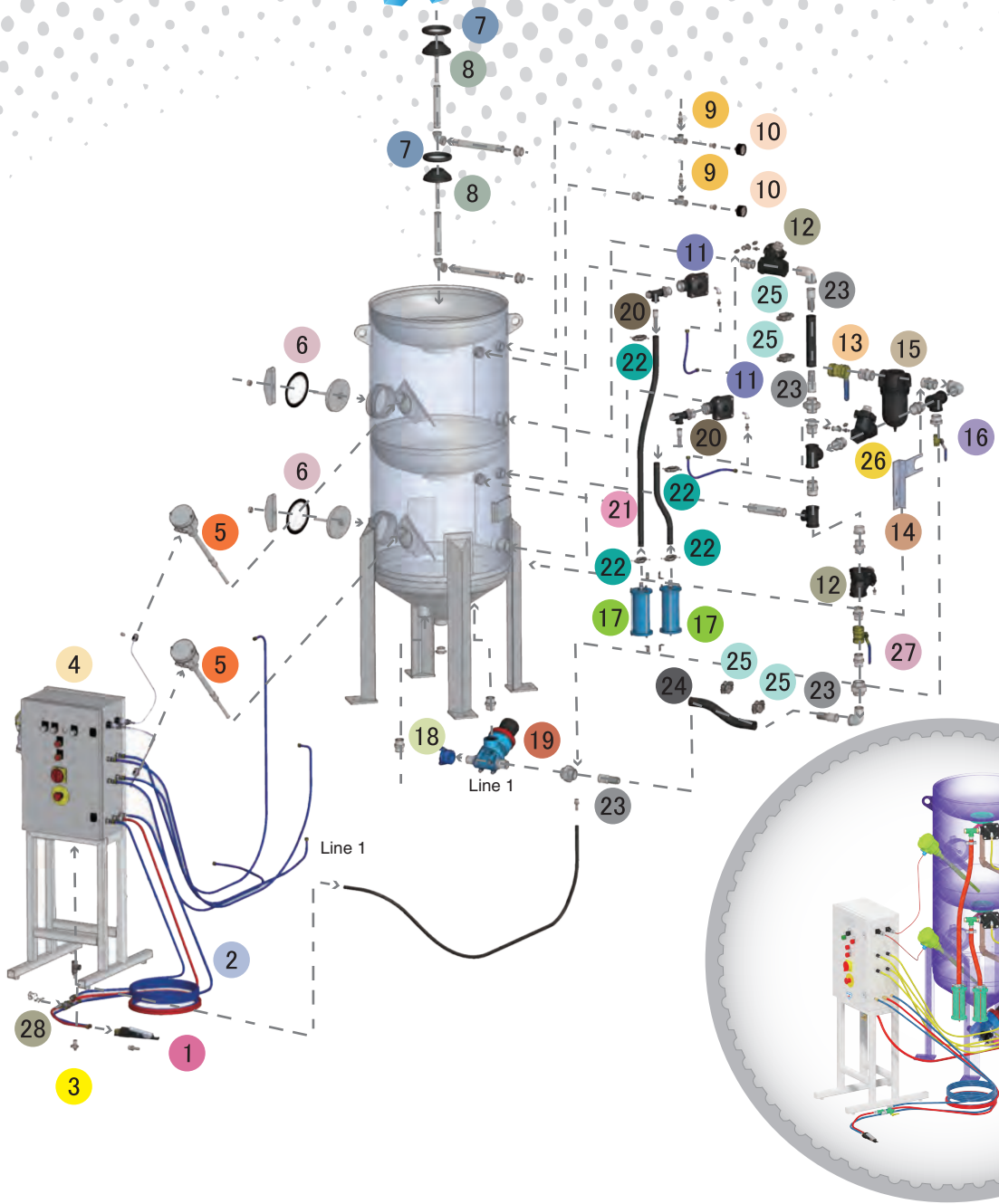
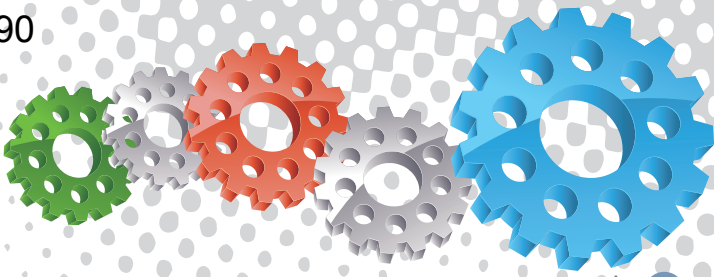


## Component Highlights



- |  |   |   |
|--|---|---|
| 1 Fast Filling Dished Top  | 7 Safety Color Coded Twin Line Control Hose   | 13 High Flow Moisture Separator                                 |
| 2 Top Abrasive Media Filling Chamber                               | 8 AirStop Pneumatic Control Handle            | 14 Lower Chamber Remote Valve                                   |
| 3 Top Chamber Media Level Sensor                                   | 9 Remote Air Blow Down Toggle Switch          | 15 Top Chamber Remote Valve                                     |
| 4 Lower Abrasive Media Feed Chamber                                | 10 Corsa II Automatic Abrasive Metering Valve | 16 Upper & Lower Chamber Safety Relief Valve and Pressure Gauge |
| 5 Lower Chamber Media Level Sensor                                 | 11 Operator Remote Control Air Valve          | 17 Upper & Lower Chamber Air Exhaust Valve                      |
| 6 Chamber Cycle Timer Control with Integrated Air Blow Down System | 12 Dual Air Exhaust Mufflers                  |   |





## Assembly

Stock Code	Description	Dry Weight	Abrasive Capacity	Piping Size
BEP-PS-0017-00	CB800-S/BS Tandem Corsa II-TS DV	400 kg (881 lbs)	300 litres (10.6 ft³)	38 mm (1-1/2")





## Parts List



Description	Qty	Description	Qty	Description	Qty
1 AirStop Pneumatic Control Handle	1	11 1" NPT Diaphragm Dump Valve	2	21 Blast Hose 19 mmx34 mmx20 m L2	1.4 m
2 20 m (66') Twinline Hose Assembly	1	12 1-1/4" Tandem NPT Valve Assembly	2	22 Hose Clamp	4
3 Mini Ball Valve	1	13 38 mm (1-1/2") Ball Valve	1	23 KC Nipple	4
4 CB800 Cycle Controller Pneu1	1	14 Support Bracket	1	24 32 mm (1-1/4") Air Supply Hose	0.5 m
5 Level Sensor	2	15 38 mm (1-1/2") Port Moisture Separator	1	25 Hose Clamp	4
6 Blast Pot-H/Hole 192x144 -Sealing Gasket	2	16 13 mm (1/2") Ball Valve	1	26 1-1/2" Tandem NPT Valve Assembly	1
7 Pop Up Valve Seating Ring	2	17 Exhaust Muffler	2	27 32 mm (1-1/4") Ball Valve	1
8 Pop Up Valve - Stem Type	2	18 NTC-1 Nylon Threaded Pot Coupling	1	28 Air Blow Down Kit W/O Corsa II	1
9 1/2" BSP - 125 PSI Pressure Relief Valve	2	19 Corsa II 1-1/4" With Tungsten Sleeve	1		
10 6 mm (1/4") Pressure Gauge - Rear Entry	2	20 KC Nipple	2		

Архангельск (8182)63-90-72  
Астана (7172)727-132  
Астрахань (8512)99-46-04  
Барнаул (3852)73-04-60  
Белгород (4722)40-23-64  
Брянск (4832)59-03-52  
Владивосток (423)249-28-31  
Волгоград (844)278-03-48  
Вологда (8172)26-41-59  
Воронеж (473)204-51-73  
Екатеринбург (343)384-55-89  
Иваново (4932)77-34-06

Ижевск (3412)26-03-58  
Иркутск (395)279-98-46  
Казань (843)206-01-48  
Калининград (4012)72-03-81  
Калуга (4842)92-23-67  
Кемерово (3842)65-04-62  
Киров (8332)68-02-04  
Краснодар (861)203-40-90  
Красноярск (391)204-63-61  
Курск (4712)77-13-04  
Липецк (4742)52-20-81

Киргизия (996)312-96-26-47

Магнитогорск (3519)55-03-13  
Москва (495)268-04-70  
Мурманск (8152)59-64-93  
Набережные Челны (8552)20-53-41  
Нижний Новгород (831)429-08-12  
Новокузнецк (3843)20-46-81  
Новосибирск (383)227-86-73  
Омск (3812)21-46-40  
Орел (4862)44-53-42  
Оренбург (3532)37-68-04  
Пенза (8412)22-31-16

Россия (495)268-04-70

Пермь (342)205-81-47  
Ростов-на-Дону (863)308-18-15  
Рязань (4912)46-61-64  
Самара (846)206-03-16  
Санкт-Петербург (812)309-46-40  
Саратов (845)249-38-78  
Севастополь (8692)22-31-93  
Симферополь (3652)67-13-56  
Смоленск (4812)29-41-54  
Сочи (862)225-72-31  
Ставрополь (8652)20-65-13

Казахстан (772)734-952-31

Сургут (3462)77-98-35  
Тверь (4822)63-31-35  
Томск (3822)98-41-53  
Тула (4872)74-02-29  
Тюмень (3452)66-21-18  
Ульяновск (8422)24-23-59  
Уфа (347)229-48-12  
Хабаровск (4212)92-98-04  
Челябинск (351)202-03-61  
Череповец (8202)49-02-64  
Ярославль (4852)69-52-93

[www.panblast.nt-rt.ru](http://www.panblast.nt-rt.ru) | | [pav@nt-rt.ru](mailto:pav@nt-rt.ru)