

Архангельск (8182)63-90-72
Астана (7172)727-132
Астрахань (8512)99-46-04
Барнаул (3852)73-04-60
Белгород (4722)40-23-64
Брянск (4832)59-03-52
Владивосток (423)249-28-31
Волгоград (844)278-03-48
Вологда (8172)26-41-59
Воронеж (473)204-51-73
Екатеринбург (343)384-55-89
Иваново (4932)77-34-06

Ижевск (3412)26-03-58
Иркутск (395)279-98-46
Казань (843)206-01-48
Калининград (4012)72-03-81
Калуга (4842)92-23-67
Кемерово (3842)65-04-62
Киров (8332)68-02-04
Краснодар (861)203-40-90
Красноярск (391)204-63-61
Курск (4712)77-13-04
Липецк (4742)52-20-81

Киргизия (996)312-96-26-47

Магнитогорск (3519)55-03-13
Москва (495)268-04-70
Мурманск (8152)59-64-93
Набережные Челны (8552)20-53-41
Нижний Новгород (831)429-08-12
Новокузнецк (3843)20-46-81
Новосибирск (383)227-86-73
Омск (3812)21-46-40
Орел (4862)44-53-42
Оренбург (3532)37-68-04
Пенза (8412)22-31-16

Россия (495)268-04-70

Пермь (342)205-81-47
Ростов-на-Дону (863)308-18-15
Рязань (4912)46-61-64
Самара (846)206-03-16
Санкт-Петербург (812)309-46-40
Саратов (845)249-38-78
Севастополь (8692)22-31-93
Симферополь (3652)67-13-56
Смоленск (4812)29-41-54
Сочи (862)225-72-31
Ставрополь (8652)20-65-13

Казахстан (772)734-952-31

Сургут (3462)77-98-35
Тверь (4822)63-31-35
Томск (3822)98-41-53
Тула (4872)74-02-29
Тюмень (3452)66-21-18
Ульяновск (8422)24-23-59
Уфа (347)229-48-12
Хабаровск (4212)92-98-04
Челябинск (351)202-03-61
Череповец (8202)49-02-64
Ярославль (4852)69-52-93

www.panblast.nt-rt.ru | | pav@nt-rt.ru

Технические характеристики на пескоструйные камеры ручные (с ручными шаровыми клапанами)

КОМПАНИИ **PanBlast**



BP50-3 Blast Pots



Product Features

PanBlast™ BP Series Blast Pots are available in multiple configurations and specifications to suit varying market requirements worldwide. The BP50-3 is a compact, manual blast pot, suited for touch-up blasting and operation in confined spaces.

- ▶ Simple manual ball valve operation.
- ▶ Pressure gauge and relief valve included.
- ▶ Quick and easy parts replacement.
- ▶ 14 litres (0.5 ft³) abrasive capacity, 125 or 150 psi pressure rating.
- ▶ 13 mm (1/2") fittings.

Common Applications

- ▶ On site industrial and commercial blasting.
- ▶ Blast and painting contractor yard work.
- ▶ Blast room applications with or without abrasive recovery systems.
- ▶ In situ blasting in shipyards and slipways.

Complementary Products



Blast Hoses



ATN Blast Nozzles



Galaxy Blast Helmet



PBF II-1 Airline Filter



Couplings & Nozzle Holders



Hypodermic Needle Gauge

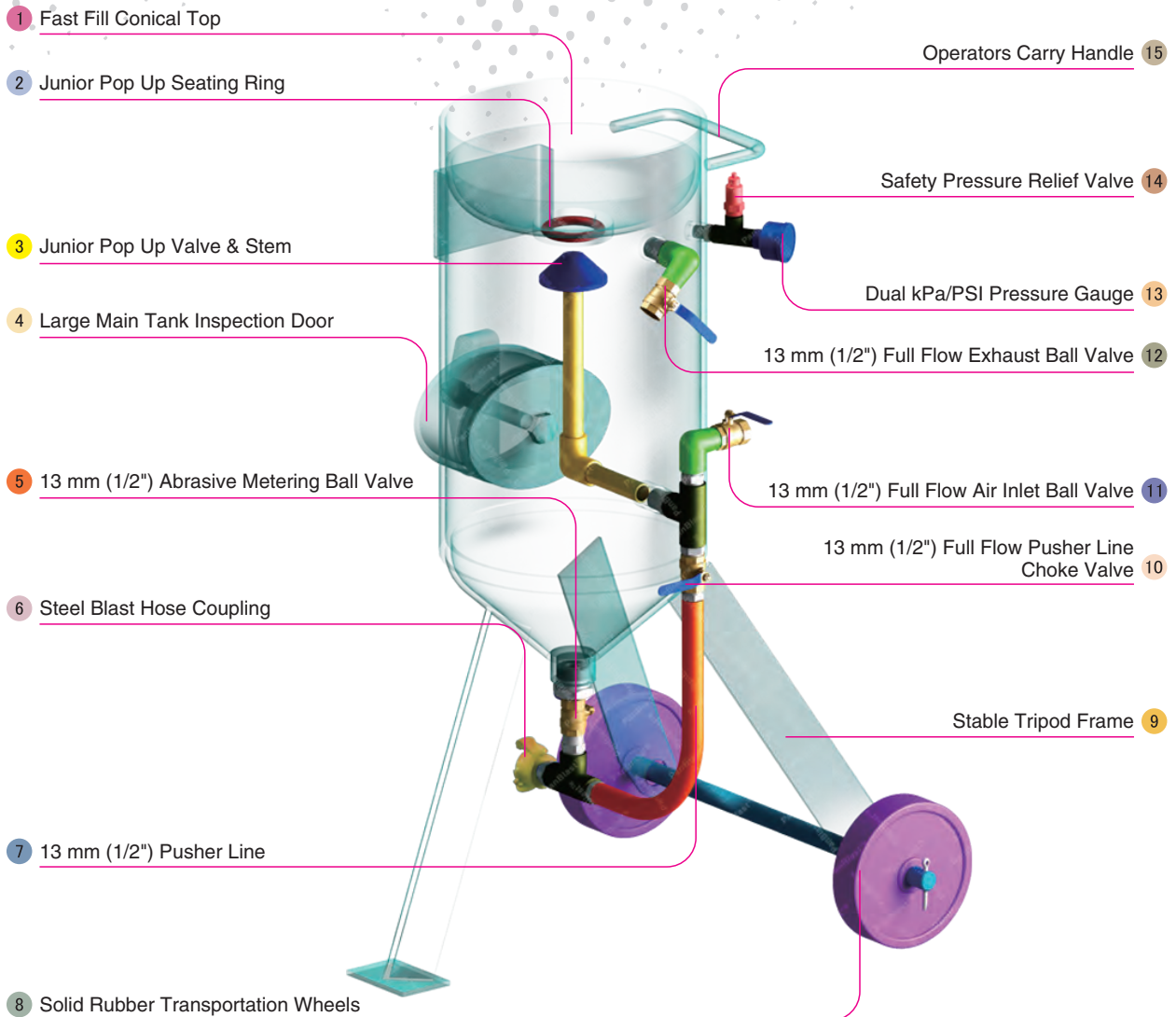


Whip Check Cables



Blasting Suit & Gloves

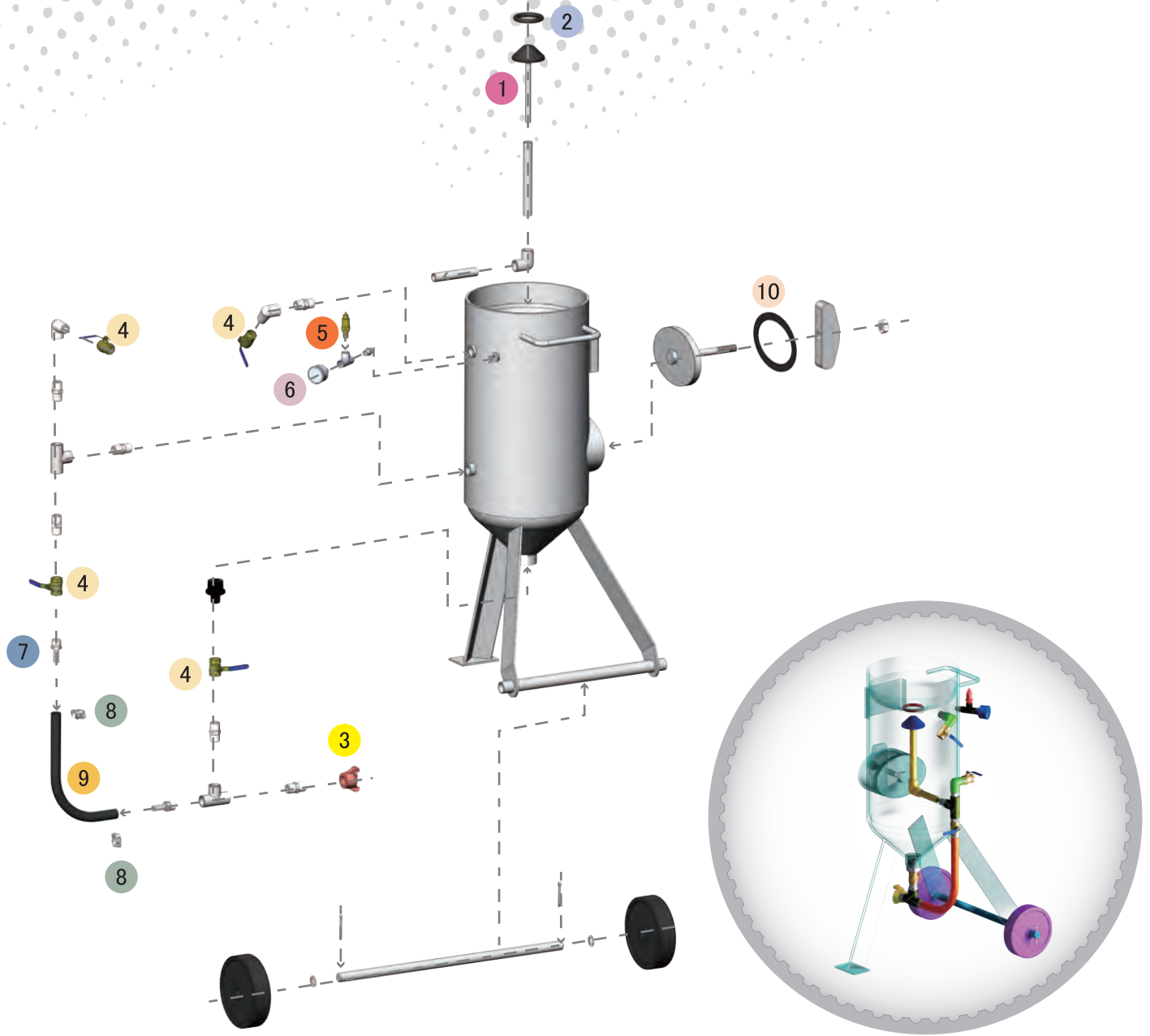
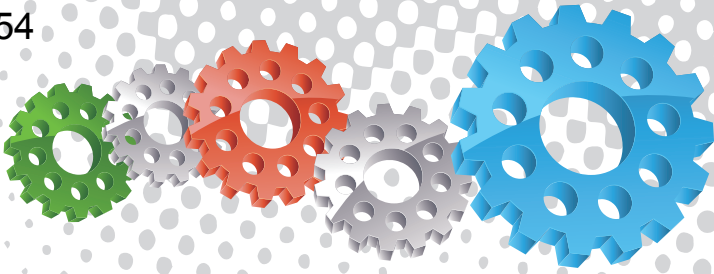
Note: Contact the local governing authority to determine if manually operated blast pots are suitable for use in your region.



Component Highlights



- | | | |
|---|---|--|
| 1 Fast Fill Conical Top | 6 Steel Blast Hose Coupling | 11 13 mm (1/2") Full Flow Air Inlet Ball Valve |
| 2 Junior Pop Up Seating Ring | 7 13 mm (1/2") Pusher Line | 12 13 mm (1/2") Full Flow Exhaust Ball Valve |
| 3 Junior Pop Up Valve & Stem | 8 Solid Rubber Transportation Wheels | 13 Dual kPa/PSI Pressure Gauge |
| 4 Large Main Tank Inspection Door | 9 Stable Tripod Frame | 14 Safety Pressure Relief Valve |
| 5 13 mm (1/2") Abrasive Metering Ball Valve | 10 13 mm (1/2") Full Flow Pusher Line Choke Valve | 15 Operators Carry Handle |



Assemblies

Stock Code	Description	Dry Weight	Abrasive Capacity	Piping Size
BEP-PS-PB-0018	BP50-3/AU Manual Ball Valve 150 PSI	43 kg (95 lbs)	14 litres (0.5 ft³)	13 mm (1/2")
BEP-PS-0068-00	BP50-3/MY Manual Ball Valve	43 kg (95 lbs)	14 litres (0.5 ft³)	13 mm (1/2")



Parts List



Description	Qty	Description	Qty	Description	Qty
1 Junior Pop Up Valve	1	5 6 mm (1/4") BSP - 125/150PSI Pressure Relief Valve	1	9 Pusher Line	1
2 Junior Seating Ring	1	6 6 mm (1/4") Pressure Gauge - Rear Entry	1	10 Blast Pot-H/Hole 192x144-Sealing Gasket	1
3 STC-0 Steel Threaded Pot Coupling	1	7 KC Nipple	2		
4 13 mm (1/2") Ball Valve	4	8 Hose Clamp	2		



BP110-3 Blast Pots



Product Features

PanBlast™ BP110-3 Blast Pots are available in multiple configurations and specifications to suit varying market requirements worldwide.

- ▶ Designed and manufactured in accordance with international standards and requirements.
- ▶ Authoritative certificates or third party certificates available on request.
- ▶ Simple manual ball valve operation.
- ▶ Pressure gauge and relief valve included.
- ▶ Quick and easy parts replacement.
- ▶ 31 litres (1.1 ft³) abrasive capacity.
- ▶ 19 mm (3/4") fittings.

Common Applications

- ▶ On site industrial and commercial blasting.
- ▶ Blast and painting contractor yard work.
- ▶ Blast room applications with or without abrasive recovery systems.
- ▶ In situ blasting in shipyards and slipways.

Complementary Products



Blast Hoses



ATN Blast Nozzles



Galaxy Blast Helmet



PBF Filter Cartridge



Couplings & Nozzle Holders



Hypodermic Needle Gauge

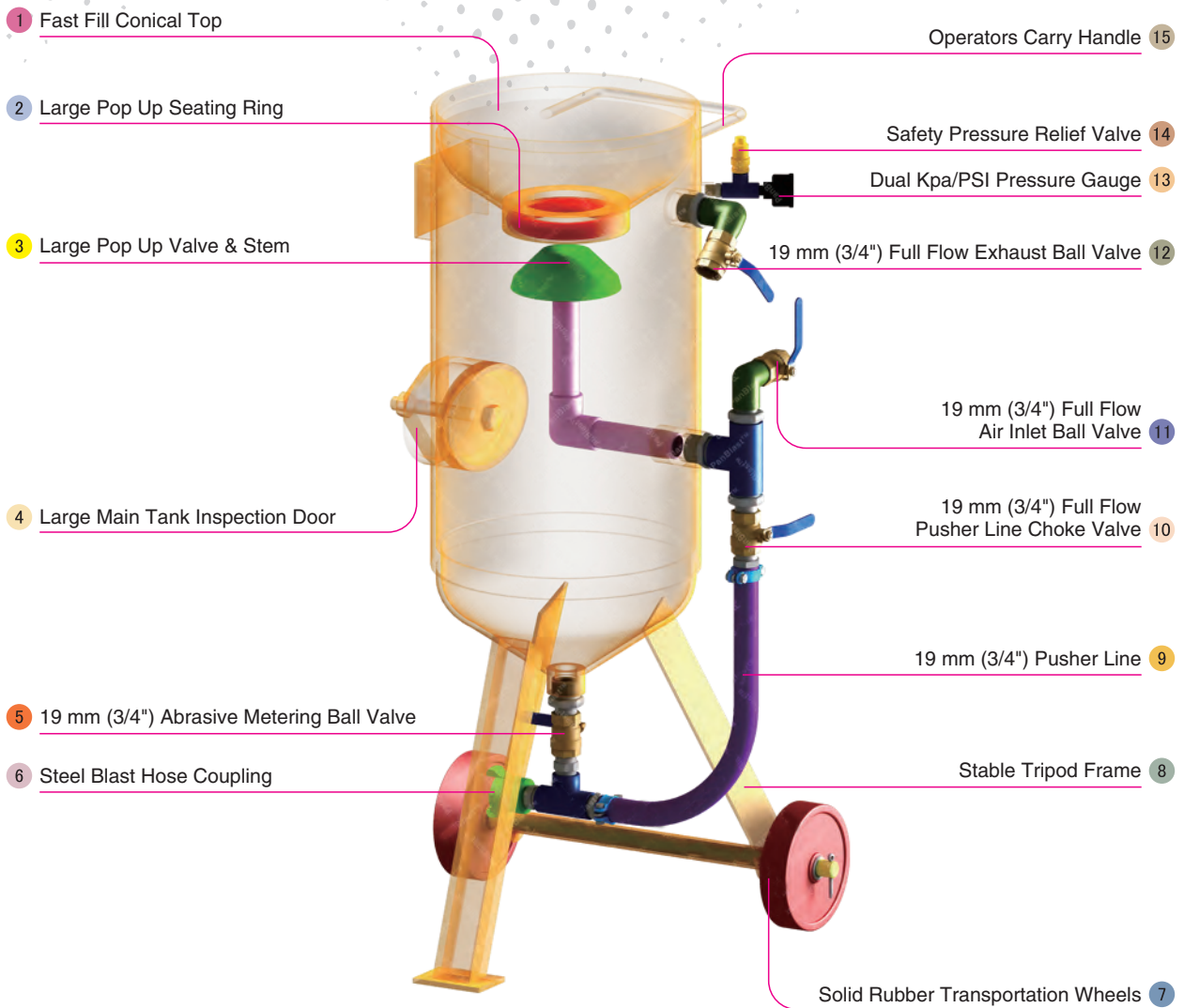


Whip Check Cables



Blasting Suit & Gloves

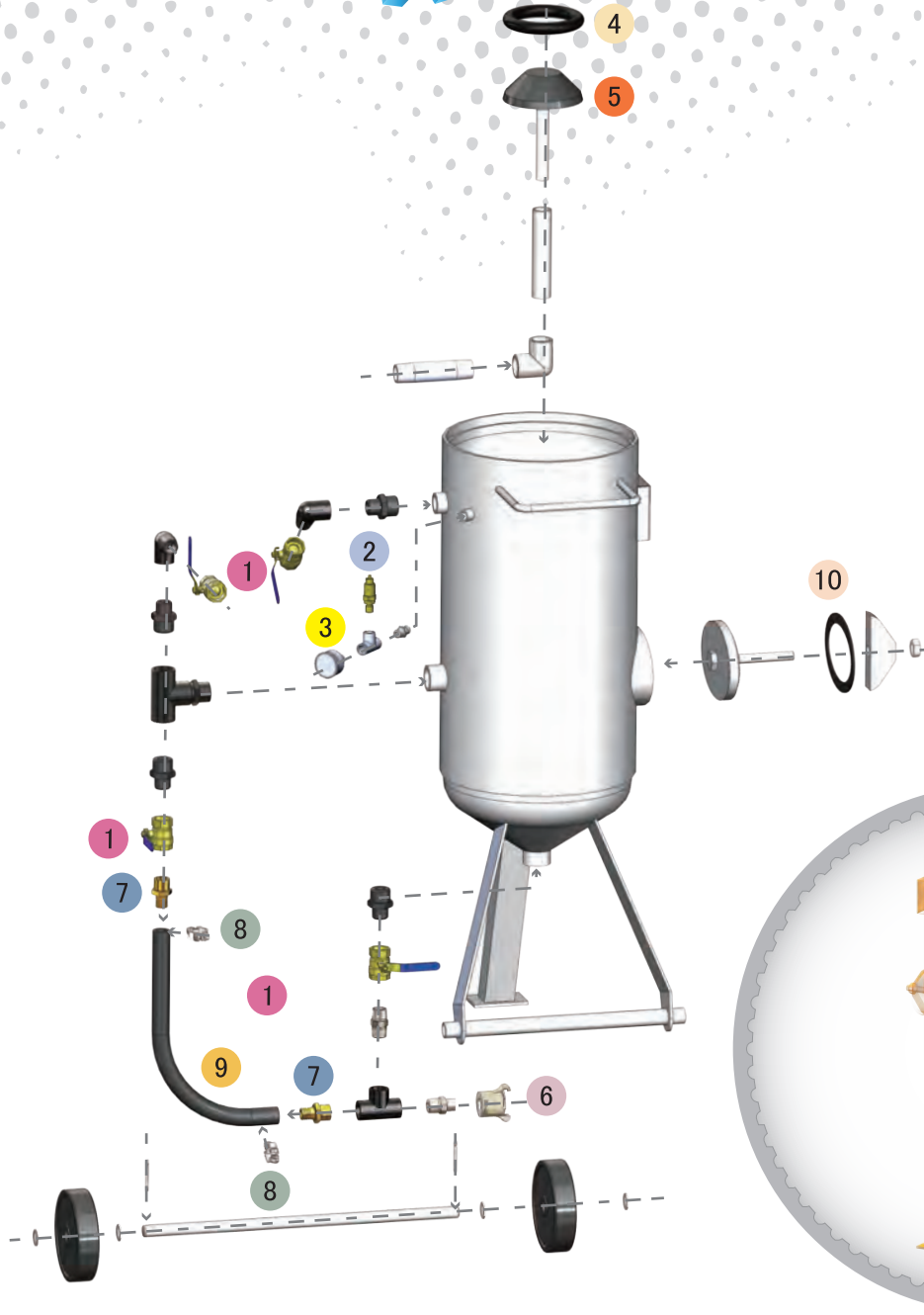
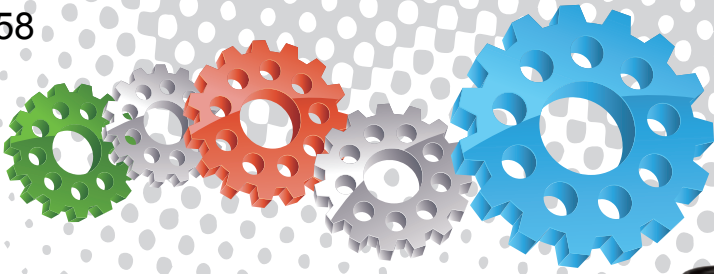
Note: Contact the local governing authority to determine if manually operated blast pots are suitable for use in your region.



Component Highlights

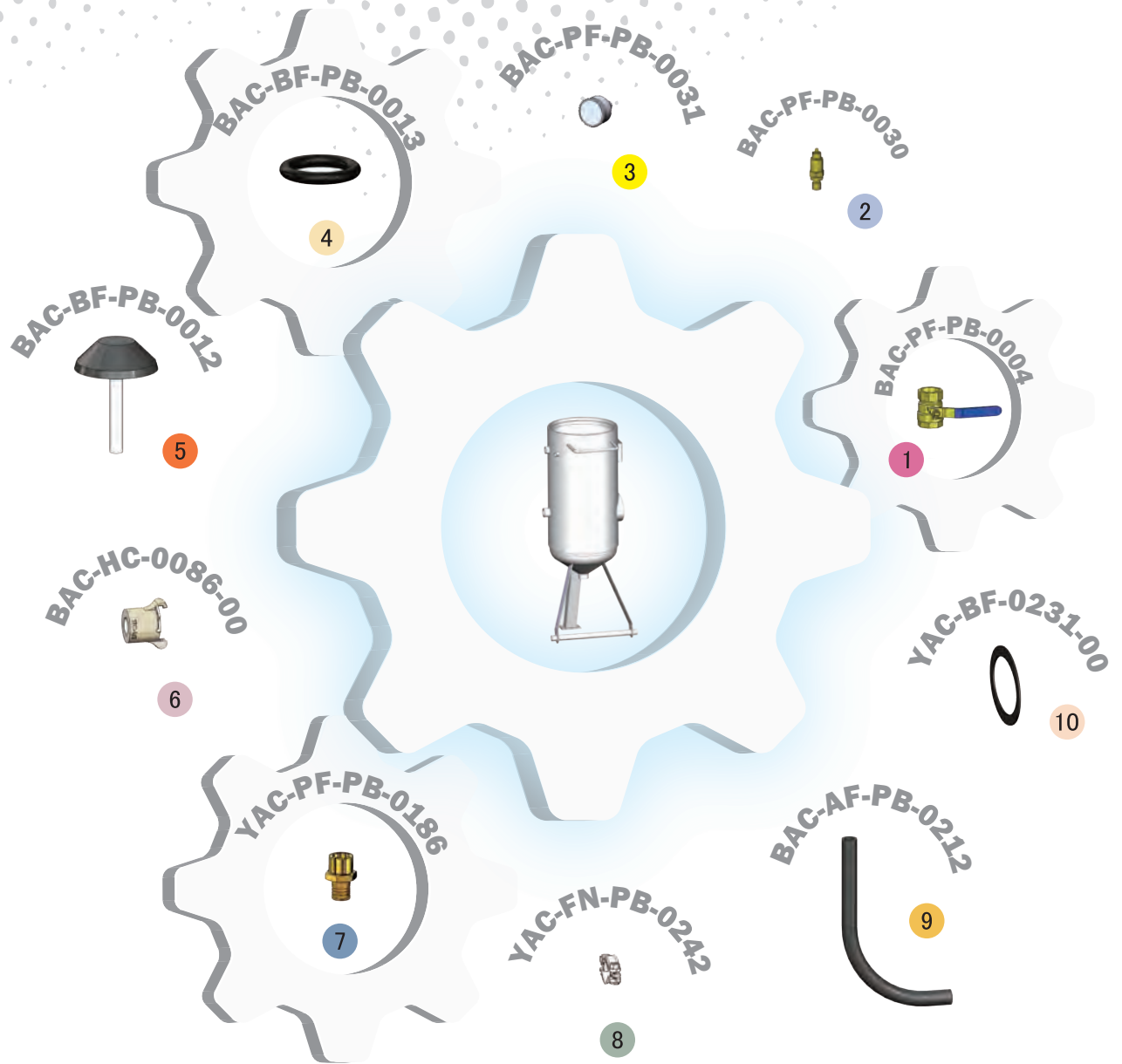


- | | | |
|---|---|--|
| 1 Fast Fill Conical Top | 6 Steel Blast Hose Coupling | 11 19 mm (3/4") Full Flow Air Inlet Ball Valve |
| 2 Large Pop Up Seating Ring | 7 Solid Rubber Transportation Wheels | 12 19 mm (3/4") Full Flow Exhaust Ball Valve |
| 3 Large Pop Up Valve & Stem | 8 Stable Tripod Frame | 13 Dual Kpa/PSI Pressure Gauge |
| 4 Large Main Tank Inspection Door | 9 19 mm (3/4") Pusher Line | 14 Safety Pressure Relief Valve |
| 5 19 mm (3/4") Abrasive Metering Ball Valve | 10 19 mm (3/4") Full Flow Pusher Line Choke Valve | 15 Operators Carry Handle |



Assemblies

Stock Code	Description	Dry Weight	Abrasive Capacity	Piping Size
BEP-PS-0066-00	BP110-3/SG Manual Ball Valve	59 kg(130 lbs)	31 litres (1.1 ft³)	19 mm (3/4")
BEP-PS-0075-00	BP110-3/AU/MY/NZ Manual Ball Valve	59 kg(130 lbs)	31 litres (1.1 ft³)	19 mm (3/4")



Parts List



Description	Qty	Description	Qty	Description	Qty
1 19 mm (3/4") Ball Valve	4	5 Pop Up Valve - Stem Type	1	9 19 mm (3/4") Air Supply Hose	0.7 m
2 6 mm (1/4") - 125 PSI Pressure Relief Valve	1	6 STC-1/2 Steel Threaded Pot Coupling	1	10 Blast Pot-H/Hole 192x144-Sealing Gasket	1
3 6 mm (1/4") Pressure Gauge - Rear Entry	1	7 KC Nipple	2		
4 Pop Up Valve Seating Ring	1	8 Hose Clamp	2		



BP316-3/AU/MY/NZ Blast Pot



Product Features

PanBlast™ BP 316-3/AU/NZ/MY Blast Pots are available in multiple configurations and specifications to suit varying market requirements worldwide.

- ▶ Designed and manufactured in accordance with international standards and requirements.
- ▶ Authoritative or third party certificates available on request.
- ▶ Simple manual ball valve operation.
- ▶ Pressure gauge and relief valve included.
- ▶ Quick and easy parts replacement.
- ▶ 100 litres (3 ft³) abrasive capacity.
- ▶ 32 mm (1-1/4") fittings.

Common Applications

- ▶ On site industrial and commercial blasting.
- ▶ Blast and painting contractor yard work.
- ▶ Blast room applications with or without abrasive recovery systems.
- ▶ In situ blasting in shipyards and slipways.

Complementary Products



Blast Hoses



ATN Blast Nozzles



Galaxy Blast Helmet



PBF II-1 Airline Filter



Couplings & Nozzle Holders



Hypodermic Needle Gauge

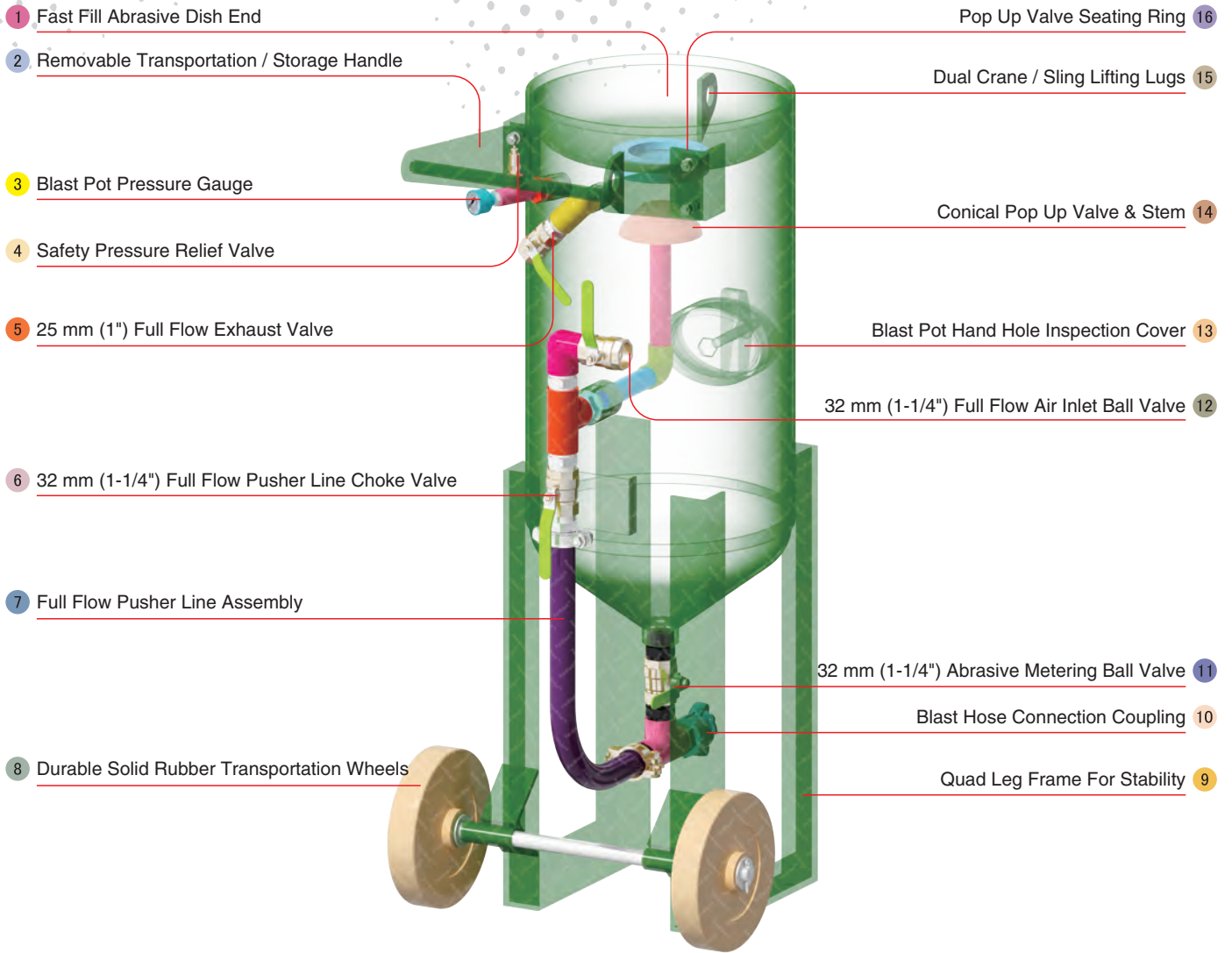
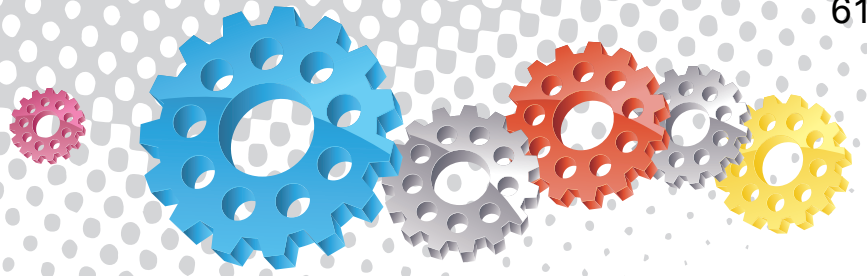


Whip Check Cables



Blasting Suit & Gloves

Note: Contact the local governing authority to determine if manually operated blast pots are suitable for use in your region.



1 Fast Fill Abrasive Dish End

2 Removable Transportation / Storage Handle

3 Blast Pot Pressure Gauge

4 Safety Pressure Relief Valve

5 25 mm (1") Full Flow Exhaust Valve

6 32 mm (1-1/4") Full Flow Pusher Line Choke Valve

7 Full Flow Pusher Line Assembly

8 Durable Solid Rubber Transportation Wheels

16 Pop Up Valve Seating Ring

15 Dual Crane / Sling Lifting Lugs

14 Conical Pop Up Valve & Stem

13 Blast Pot Hand Hole Inspection Cover

12 32 mm (1-1/4") Full Flow Air Inlet Ball Valve

11 32 mm (1-1/4") Abrasive Metering Ball Valve

10 Blast Hose Connection Coupling

9 Quad Leg Frame For Stability

Component Highlights



1 Fast Fill Abrasive Dish End

2 Removable Transportation / Storage Handle

3 Blast Pot Pressure Gauge

4 Safety Pressure Relief Valve

5 25 mm (1") Full Flow Exhaust Valve

6 32 mm (1-1/4") Full Flow Pusher Line Choke Valve

7 Full Flow Pusher Line Assembly

8 Durable Solid Rubber Transportation Wheels

9 Quad Leg Frame For Stability

10 Blast Hose Connection Coupling

11 32 mm (1-1/4") Abrasive Metering Ball Valve

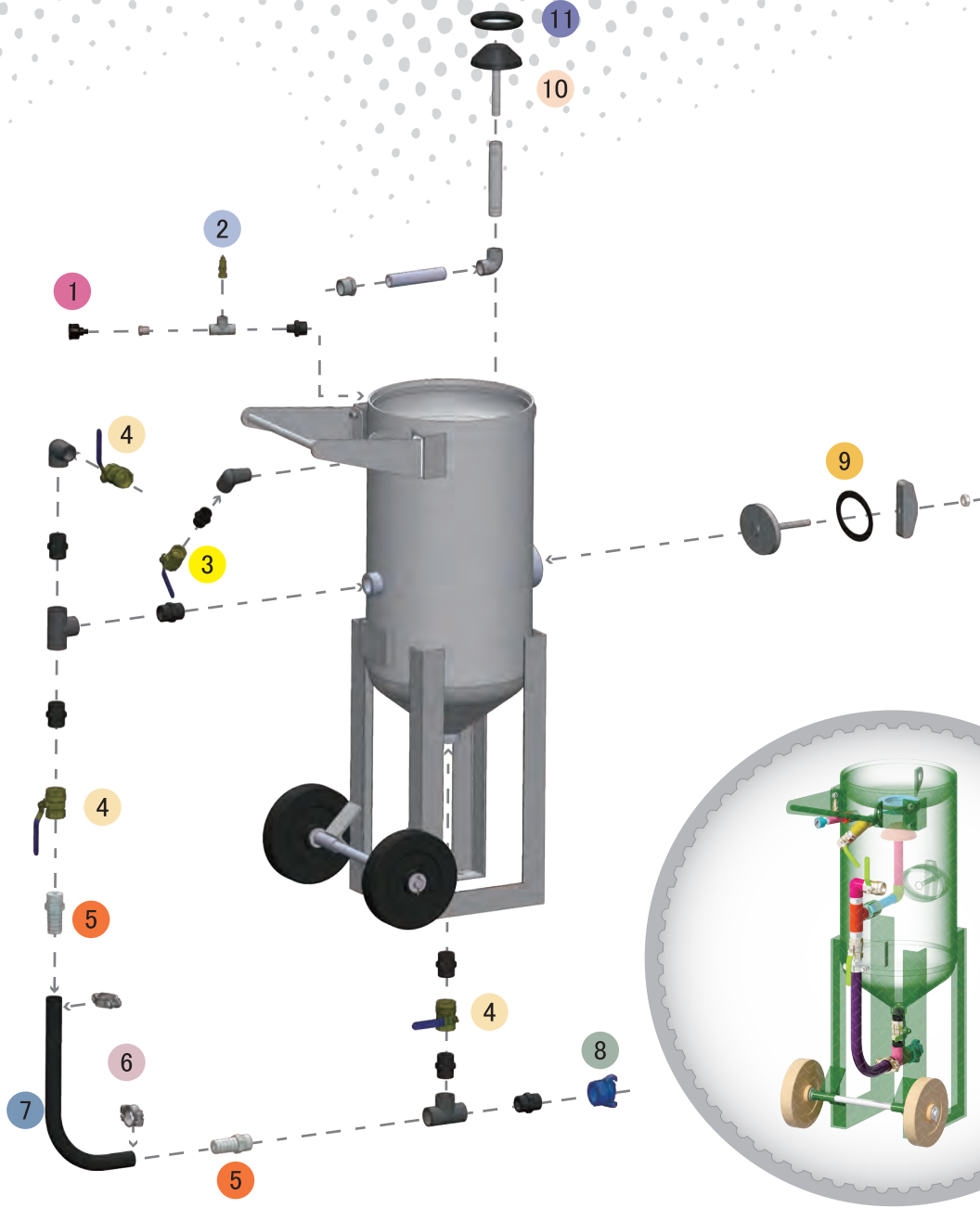
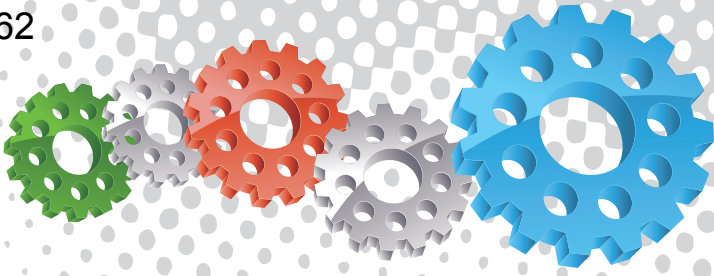
12 32 mm (1-1/4") Full Flow Air Inlet Ball Valve

13 Blast Pot Hand Hole Inspection Cover

14 Conical Pop Up Valve & Stem

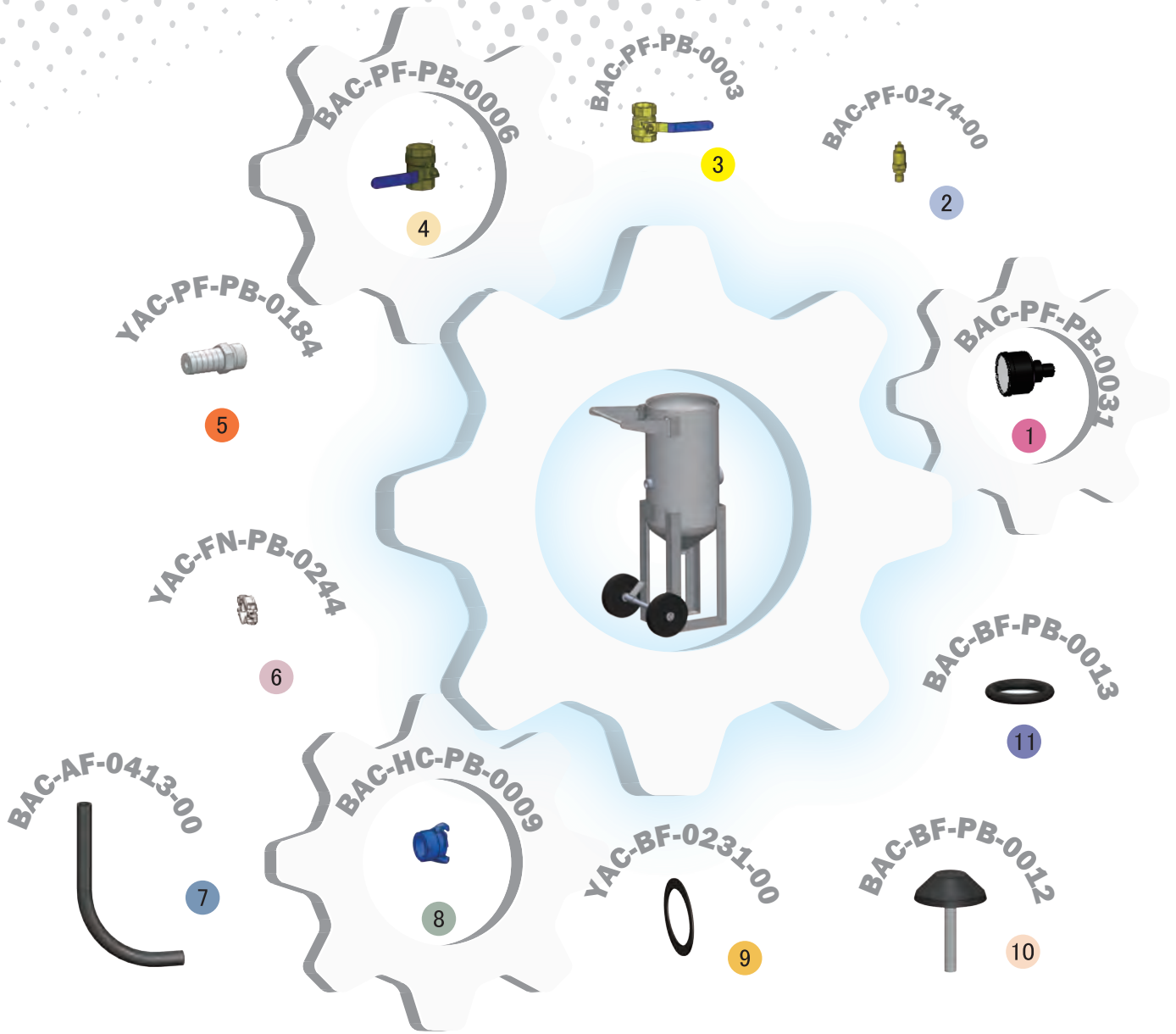
15 Dual Crane / Sling Lifting Lugs

16 Pop Up Valve Seating Ring



Assembly

Stock Code	Description	Dry Weight	Abrasive Capacity	Piping Size
BEP-PS-0063-00	BP316-3/AU/MY/NZ Manual Ball Valve	125 kg (276 lbs)	100 litres (3 ft ³)	32 mm (1-1/4")



Parts List



Description	Qty	Description	Qty	Description	Qty
1 6 mm (1/4") Pressure Gauge - Rear Entry	1	5 KC Nipple	2	9 Blast Pot-H/Hole 192x144 -Sealing Gasket	1
2 1/2" BSP - 125 PSI Pressure Relief Valve	1	6 Hose Clamp	2	10 Pop Up Valve - StemType	1
3 25 mm (1") Ball Valve	1	7 32 mm (1-1/4") Air Supply Hose	0.7 m	11 Pop Up Valve Seating Ring	1
4 32 mm (1-1/4") Ball Valve	3	8 NTC-1 Nylon Threaded Pot Coupling	1		



BP600-3 Blast Pots



Product Features

PanBlast™ BP Series Blast Pots are available in multiple configurations and specifications to suit varying market requirements worldwide. The BP600-3 is a full-size, manual blast pot, suitable for large-scale blasting operations.

- ▶ Designed and manufactured in accordance with international standards and requirements.
- ▶ Third party pressure vessel test certificates available on request.
- ▶ Pressure gauge and relief valve included.
- ▶ Quick and easy parts replacement.
- ▶ Wide, pneumatic wheels for increased maneuverability and stability.
- ▶ 200 litres (6 ft³) abrasive capacity, 125 or 150 psi pressure rating.
- ▶ 32 mm (1-1/4") fittings.

Common Applications

- ▶ On site industrial and commercial blasting.
- ▶ Blast and painting contractor yard work.
- ▶ Blast room applications with or without abrasive recovery systems.
- ▶ In situ blasting in shipyards and slipways.

Complementary Products



Blast Hoses



Cosmo SAR



Couplings & Nozzle Holders



Whip Check Cables



Blast Nozzles



PBF II-1 Airline Filter

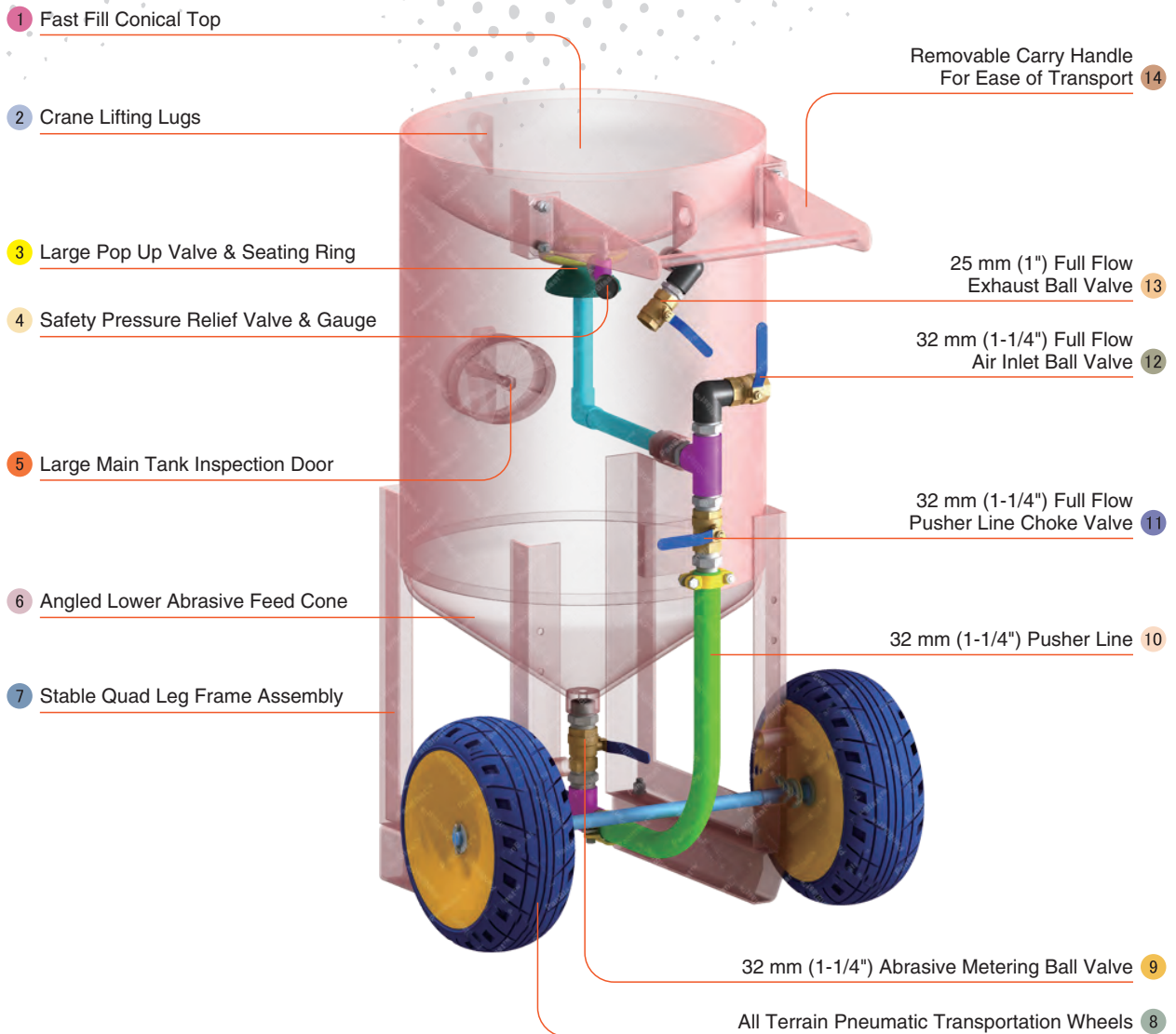


UniFlo Conversion Kit



Blasting Suit & Gloves

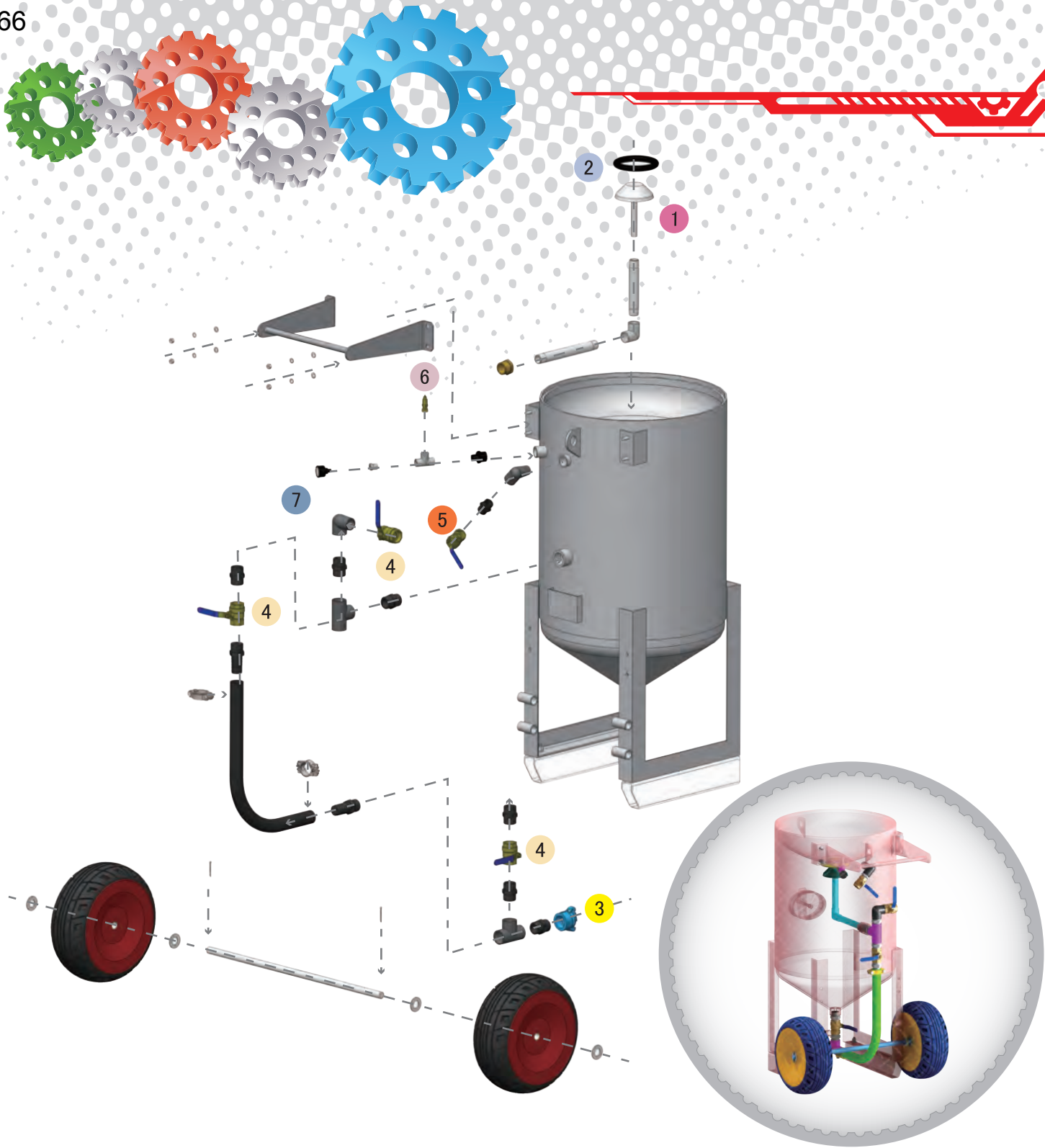
Note: Contact the local governing authority to determine if manually operated blast pots are suitable for use in your region.



Component Highlights

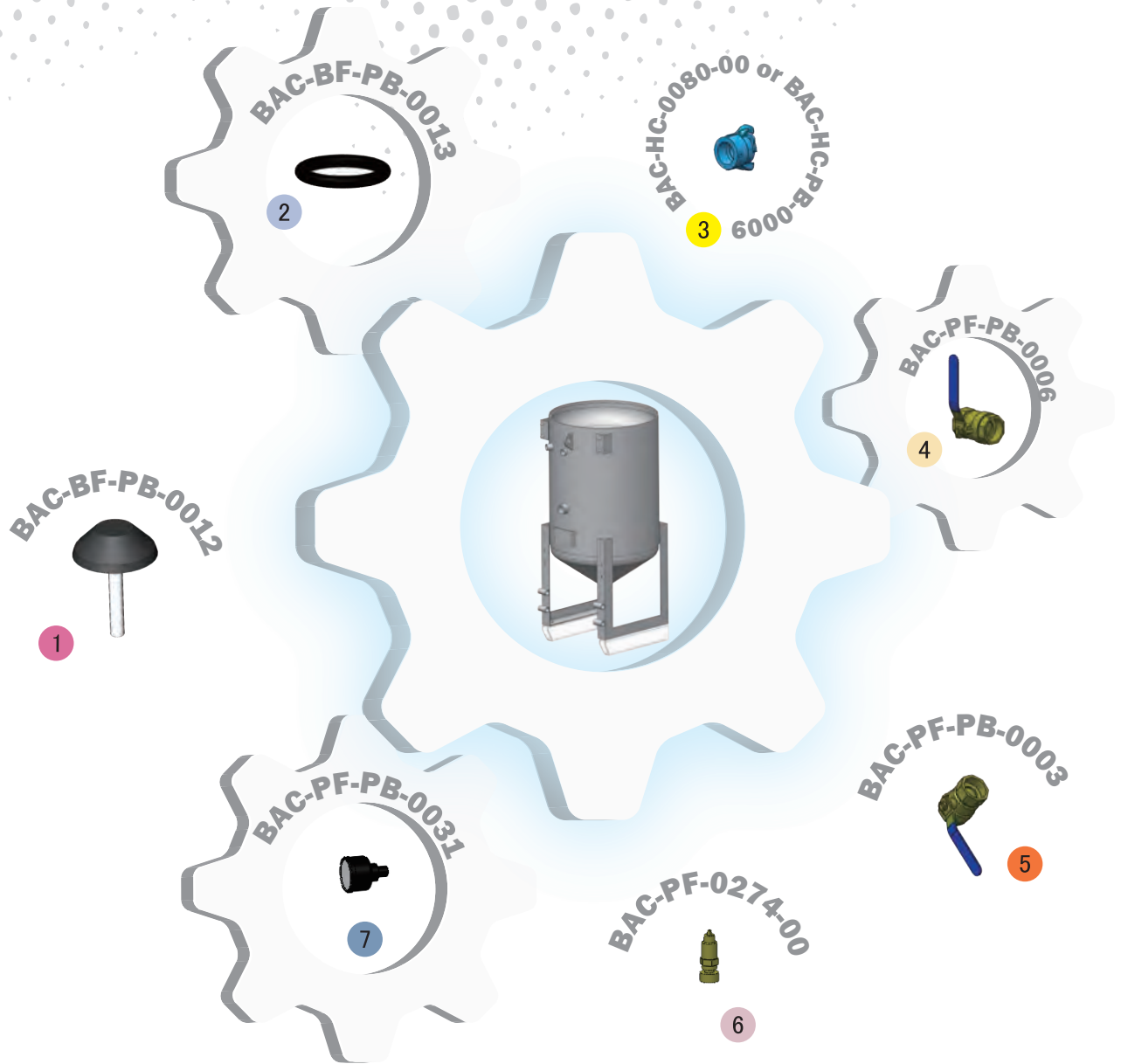


- | | | |
|--|---|---|
| 1 Fast Fill Conical Top | 6 Angled Lower Abrasive Feed Cone | 11 32 mm (1-1/4") Full Flow Pusher Line Choke Valve |
| 2 Crane Lifting Lugs | 7 Stable Quad Leg Frame Assembly | 12 32 mm (1-1/4") Full Flow Air Inlet Ball Valve |
| 3 Large Pop Up Valve & Seating Ring | 8 All Terrain Pneumatic Transportation Wheels | 13 25 mm (1") Full Flow Exhaust Ball Valve |
| 4 Safety Pressure Relief Valve & Gauge | 9 32 mm (1-1/4") Abrasive Metering Ball Valve | 14 Removable Carry Handle For Ease of Transport |
| 5 Large Main Tank Inspection Door | 10 32 mm (1-1/4") Pusher Line | |



Assemblies

Stock Code	Description	Dry Weight	Abrasive Capacity	Piping Size
BEP-PS-0052-00	BP600-3/MY Manual Ball Valve	195 kg (430 lbs)	200 litres (6 ft ³)	32 mm (1-1/4")
BEP-PS-0053-00	BP600-3/SG Manual Ball Valve	195 kg (430 lbs)	200 litres (6 ft ³)	32 mm (1-1/4")
BEP-PS-0073-00	BP600-3/AU/NZ Manual Ball Valve	195 kg (430 lbs)	200 litres (6 ft ³)	32 mm (1-1/4")



Parts List



Description	Qty	Description	Qty	Description	Qty
1 Pop Up Valve - Stem Type	1	4 32 mm (1-1/4") Ball Valve	3	7 6 mm (1/4") Pressure Gauge -Rear Entry	1
2 Pop Up Valve Seating Ring	1	5 25 mm (1") Ball Valve	1		
3 Threaded Blast Coupling	1	6 1/2" BSP - 125 PSI Pressure Relief Valve	1		



BP600-3/MY Blast Pot



Product Features

PanBlast™ BP Series Blast Pots are available in multiple configurations and specifications to suit varying market requirements worldwide. The BP600-3 is a full-size, manual blast pot, suitable for large-scale blasting operations.

- ▶ Designed and manufactured in accordance with international standards and requirements.
- ▶ Third party pressure vessel certificates available on request.
- ▶ Plana II type abrasive control valve for quick metering adjustment and easy maintenance.
- ▶ Pressure gauge and relief valve included.
- ▶ Quick and easy parts replacement.
- ▶ Wide, pneumatic wheels for increased maneuverability and stability.
- ▶ 200 litres (6 ft³) abrasive capacity, 125 psi pressure rating.
- ▶ 32 mm (1-1/4") fittings.

Common Applications

- ▶ On site industrial and commercial blasting.
- ▶ Blast and painting contractor yard work.
- ▶ Blast room applications with or without abrasive recovery systems.
- ▶ In situ blasting in shipyards and slipways.

Complementary Products



Blast Hoses



Cosmo SAR



Couplings & Nozzle Holders



Whip Check Cables



ATN Blast Nozzles



PBF II-1 Airline Filter

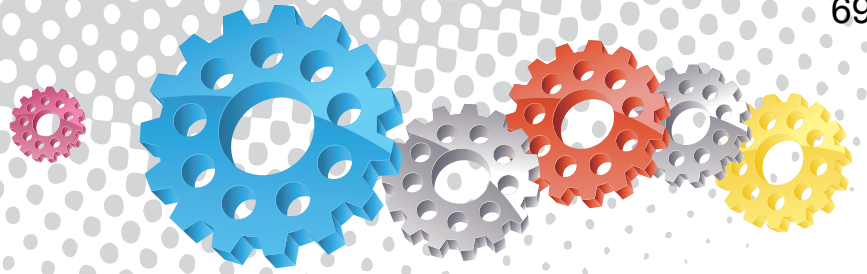


UniFlo Conversion Kit



Blasting Suit & Gloves

Note: Contact the local governing authority to determine if manually operated blast pots are suitable for use in your region.



1 Fast Filling Dished Top

2 Safety Pressure Relief Valve and Gauge

3 High Flow Air Exhaust Ball Valve

4 Full Flow Pusher Line Choke Valve

5 All Terrain Transportation Wheels

6 Plana II Abrasive Metering Valve

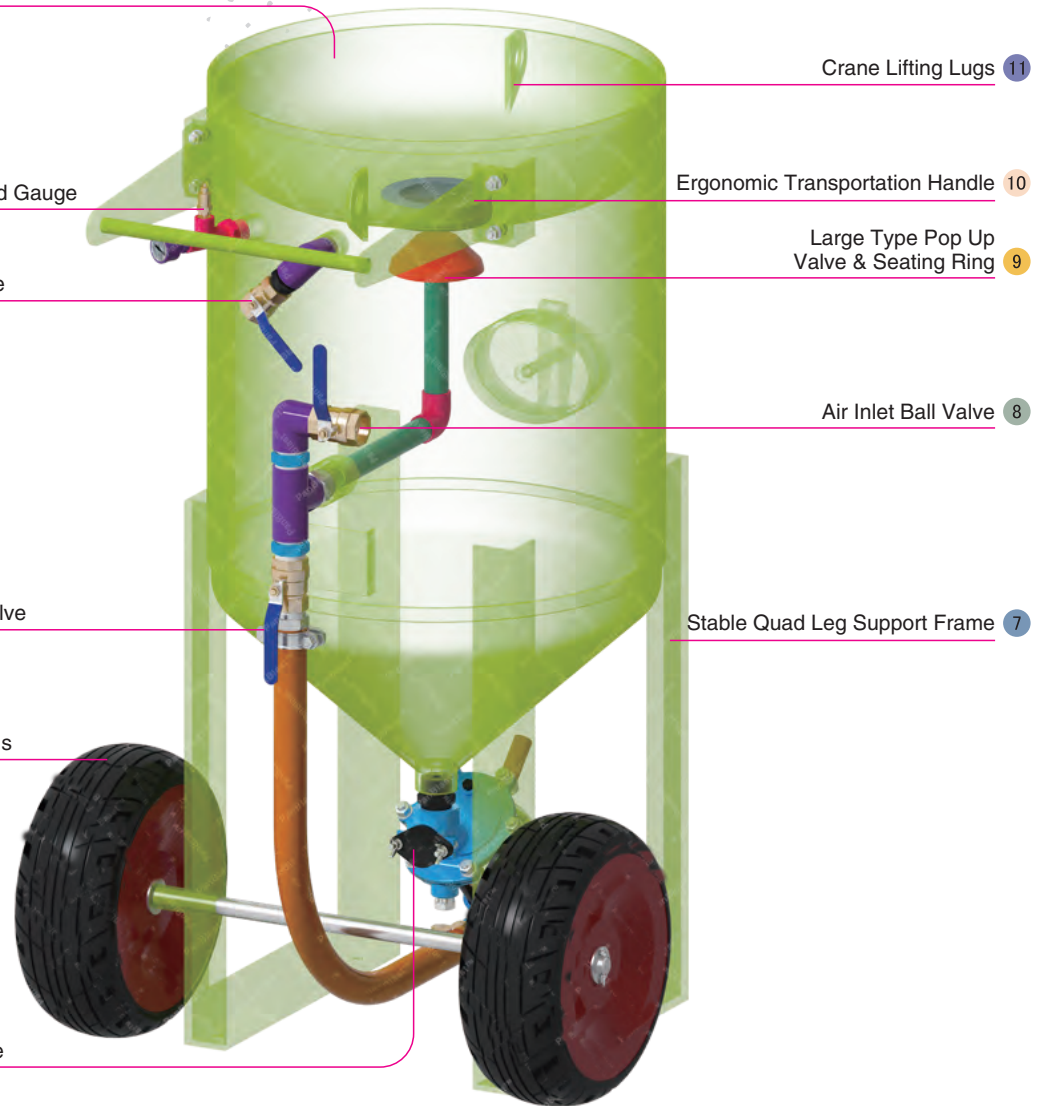
Crane Lifting Lugs 11

Ergonomic Transportation Handle 10

Large Type Pop Up Valve & Seating Ring 9

Air Inlet Ball Valve 8

Stable Quad Leg Support Frame 7



Component Highlights



1 Fast Filling Dished Top

2 Safety Pressure Relief Valve and Gauge

3 High Flow Air Exhaust Ball Valve

4 Full Flow Pusher Line Choke Valve

5 All Terrain Transportation Wheels

6 Plana II Abrasive Metering Valve

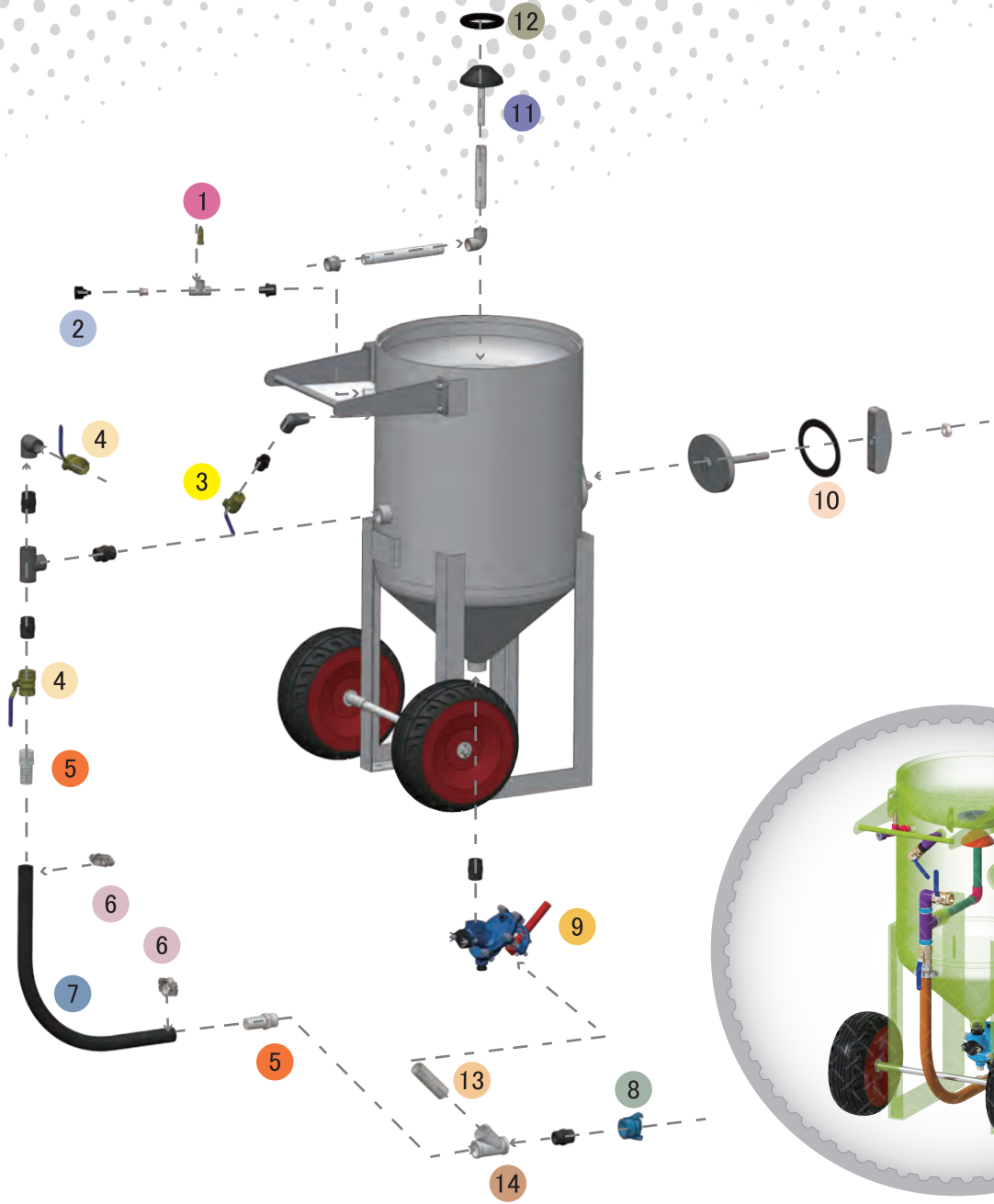
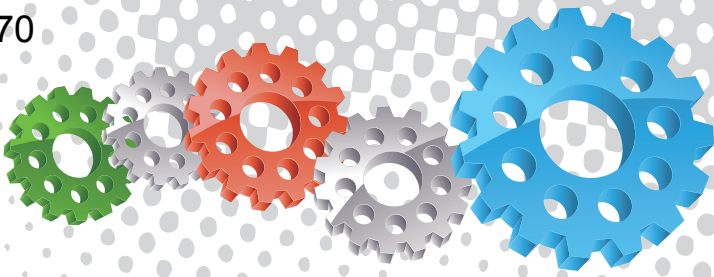
7 Stable Quad Leg Support Frame

8 Air Inlet Ball Valve

9 Large Type Pop Up Valve & Seating Ring

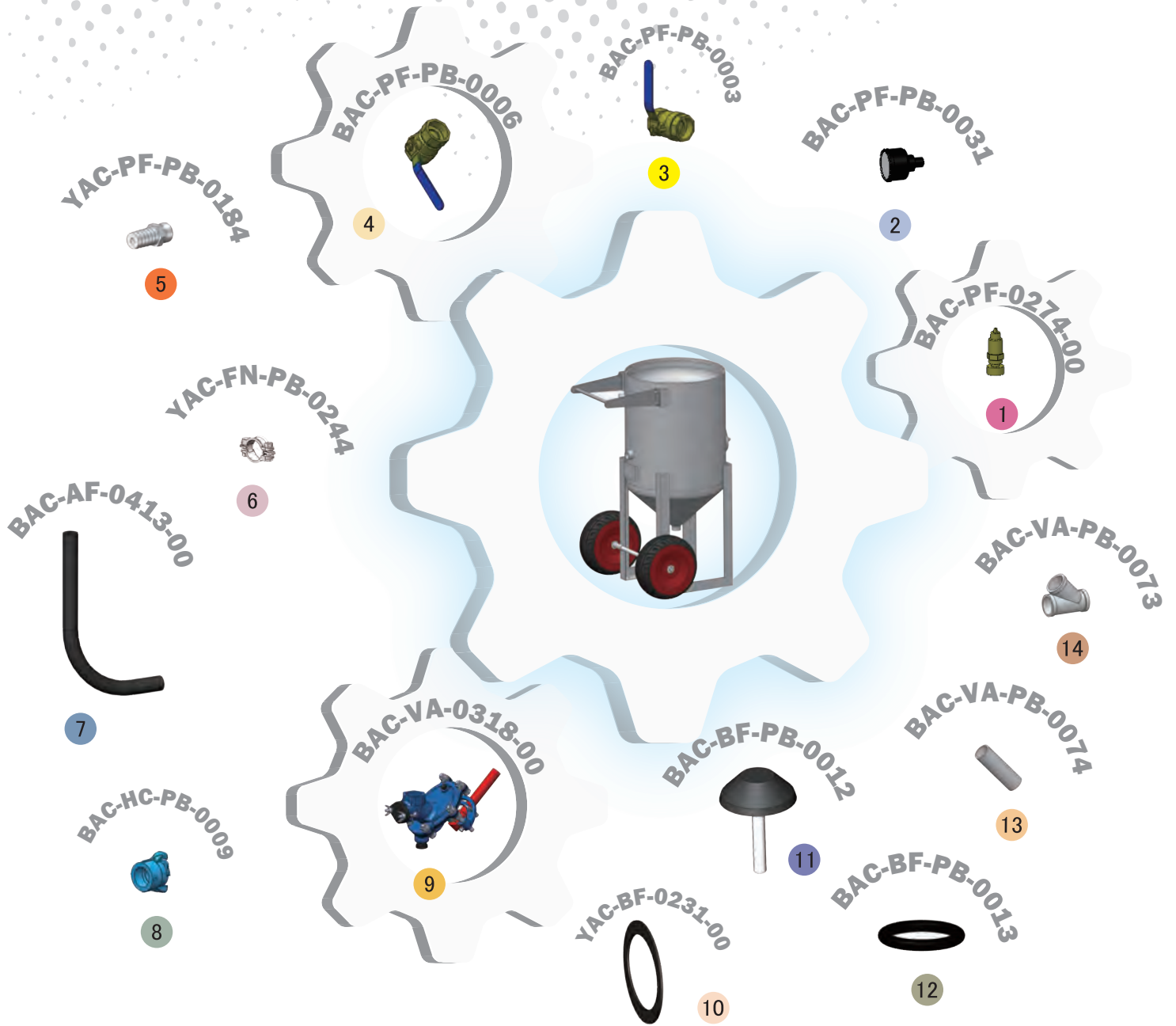
10 Ergonomic Transportation Handle

11 Crane Lifting Lugs



Assembly

Stock Code	Description	Dry Weight	Abrasive Capacity	Piping Size
BEP-PS-0048-00	BP600-3/MY Manual Plana II	200 kg (441 lbs)	200 litres (6 ft ³)	32 mm (1-1/4")



Parts List



Description	Qty	Description	Qty	Description	Qty
1 1/2" BSP - 125 PSI Pressure Relief Valve	1	6 Hose Clamp	2	11 Pop Up Valve - StemType	1
2 6 mm (1/4") Pressure Gauge - Rear Entry	1	7 32 mm (1-1/4") Air Supply Hose	1 m	12 Pop Up Valve Seating Ring	1
3 25 mm (1") Ball Valve	1	8 NTC-1 Nylon Threaded Pot Coupling	1	13 Barrel Nipple	1
4 32 mm (1-1/4") Ball Valve	2	9 Plana II Valve Assembly	1	14 Y Piece	1
5 KC Nipple	2	10 Blast Pot-H/Hole 192x144 -Sealing Gasket	1		

Архангельск (8182)63-90-72
Астана (7172)727-132
Астрахань (8512)99-46-04
Барнаул (3852)73-04-60
Белгород (4722)40-23-64
Брянск (4832)59-03-52
Владивосток (423)249-28-31
Волгоград (844)278-03-48
Вологда (8172)26-41-59
Воронеж (473)204-51-73
Екатеринбург (343)384-55-89
Иваново (4932)77-34-06

Ижевск (3412)26-03-58
Иркутск (395)279-98-46
Казань (843)206-01-48
Калининград (4012)72-03-81
Калуга (4842)92-23-67
Кемерово (3842)65-04-62
Киров (8332)68-02-04
Краснодар (861)203-40-90
Красноярск (391)204-63-61
Курск (4712)77-13-04
Липецк (4742)52-20-81

Киргизия (996)312-96-26-47

Магнитогорск (3519)55-03-13
Москва (495)268-04-70
Мурманск (8152)59-64-93
Набережные Челны (8552)20-53-41
Нижний Новгород (831)429-08-12
Новокузнецк (3843)20-46-81
Новосибирск (383)227-86-73
Омск (3812)21-46-40
Орел (4862)44-53-42
Оренбург (3532)37-68-04
Пенза (8412)22-31-16

Россия (495)268-04-70

Пермь (342)205-81-47
Ростов-на-Дону (863)308-18-15
Рязань (4912)46-61-64
Самара (846)206-03-16
Санкт-Петербург (812)309-46-40
Саратов (845)249-38-78
Севастополь (8692)22-31-93
Симферополь (3652)67-13-56
Смоленск (4812)29-41-54
Сочи (862)225-72-31
Ставрополь (8652)20-65-13

Казахстан (772)734-952-31

Сургут (3462)77-98-35
Тверь (4822)63-31-35
Томск (3822)98-41-53
Тула (4872)74-02-29
Тюмень (3452)66-21-18
Ульяновск (8422)24-23-59
Уфа (347)229-48-12
Хабаровск (4212)92-98-04
Челябинск (351)202-03-61
Череповец (8202)49-02-64
Ярославль (4852)69-52-93

www.panblast.nt-rt.ru | | pav@nt-rt.ru