

Архангельск (8182)63-90-72
Астана (7172)727-132
Астрахань (8512)99-46-04
Барнаул (3852)73-04-60
Белгород (4722)40-23-64
Брянск (4832)59-03-52
Владивосток (423)249-28-31
Волгоград (844)278-03-48
Вологда (8172)26-41-59
Воронеж (473)204-51-73
Екатеринбург (343)384-55-89
Иваново (4932)77-34-06

Ижевск (3412)26-03-58
Иркутск (395)279-98-46
Казань (843)206-01-48
Калининград (4012)72-03-81
Калуга (4842)92-23-67
Кемерово (3842)65-04-62
Киров (8332)68-02-04
Краснодар (861)203-40-90
Красноярск (391)204-63-61
Курск (4712)77-13-04
Липецк (4742)52-20-81

Киргизия (996)312-96-26-47

Магнитогорск (3519)55-03-13
Москва (495)268-04-70
Мурманск (8152)59-64-93
Набережные Челны (8552)20-53-41
Нижний Новгород (831)429-08-12
Новокузнецк (3843)20-46-81
Новосибирск (383)227-86-73
Омск (3812)21-46-40
Орел (4862)44-53-42
Оренбург (3532)37-68-04
Пенза (8412)22-31-16

Россия (495)268-04-70

Пермь (342)205-81-47
Ростов-на-Дону (863)308-18-15
Рязань (4912)46-61-64
Самара (846)206-03-16
Санкт-Петербург (812)309-46-40
Саратов (845)249-38-78
Севастополь (8692)22-31-93
Симферополь (3652)67-13-56
Смоленск (4812)29-41-54
Сочи (862)225-72-31
Ставрополь (8652)20-65-13

Казахстан (772)734-952-31

Сургут (3462)77-98-35
Тверь (4822)63-31-35
Томск (3822)98-41-53
Тула (4872)74-02-29
Тюмень (3452)66-21-18
Ульяновск (8422)24-23-59
Уфа (347)229-48-12
Хабаровск (4212)92-98-04
Челябинск (351)202-03-61
Череповец (8202)49-02-64
Ярославль (4852)69-52-93

www.panblast.nt-rt.ru | | pav@nt-rt.ru

Технические характеристики на пескоструйные камеры автоматические КОМПАНИИ **PanBlast**



BP50-1 Blast Pots



Product Features

PanBlast™ BP Series Blast Pots are available in multiple configurations and specifications to suit varying market requirements worldwide. The BP50-1 is a compact, automatic blast pot, suited to touch-up blasting and operation in confined spaces.

- ▶ Designed and manufactured in accordance with international standards and requirements.
- ▶ Third party pressure vessel certification available on request.
- ▶ Separate Sola 5 inlet and exhaust valves, for fast and efficient operation.
- ▶ AirFlo air-bleed type pneumatic deadman handle.
- ▶ Junior Plana Type abrasive control valve with durable cast iron construction.
- ▶ Moisture trap, exhaust muffler and main air isolation valve standard.
- ▶ 14 litres (0.5 ft³) abrasive capacity, 125 or 150psi pressure rating.
- ▶ 12.5 mm (1/2") fittings.

Common Applications

- ▶ On site industrial and commercial blasting.
- ▶ Blast and painting contractor yard work.
- ▶ Blast room applications with or without abrasive recovery systems.
- ▶ In situ blasting in shipyards and slipways.

Complementary Products



Moisture Separator



Pop Up Valves



Blast Hoses



QuikStop IIS Pneumatic Handle



ATN-S Blast Nozzles



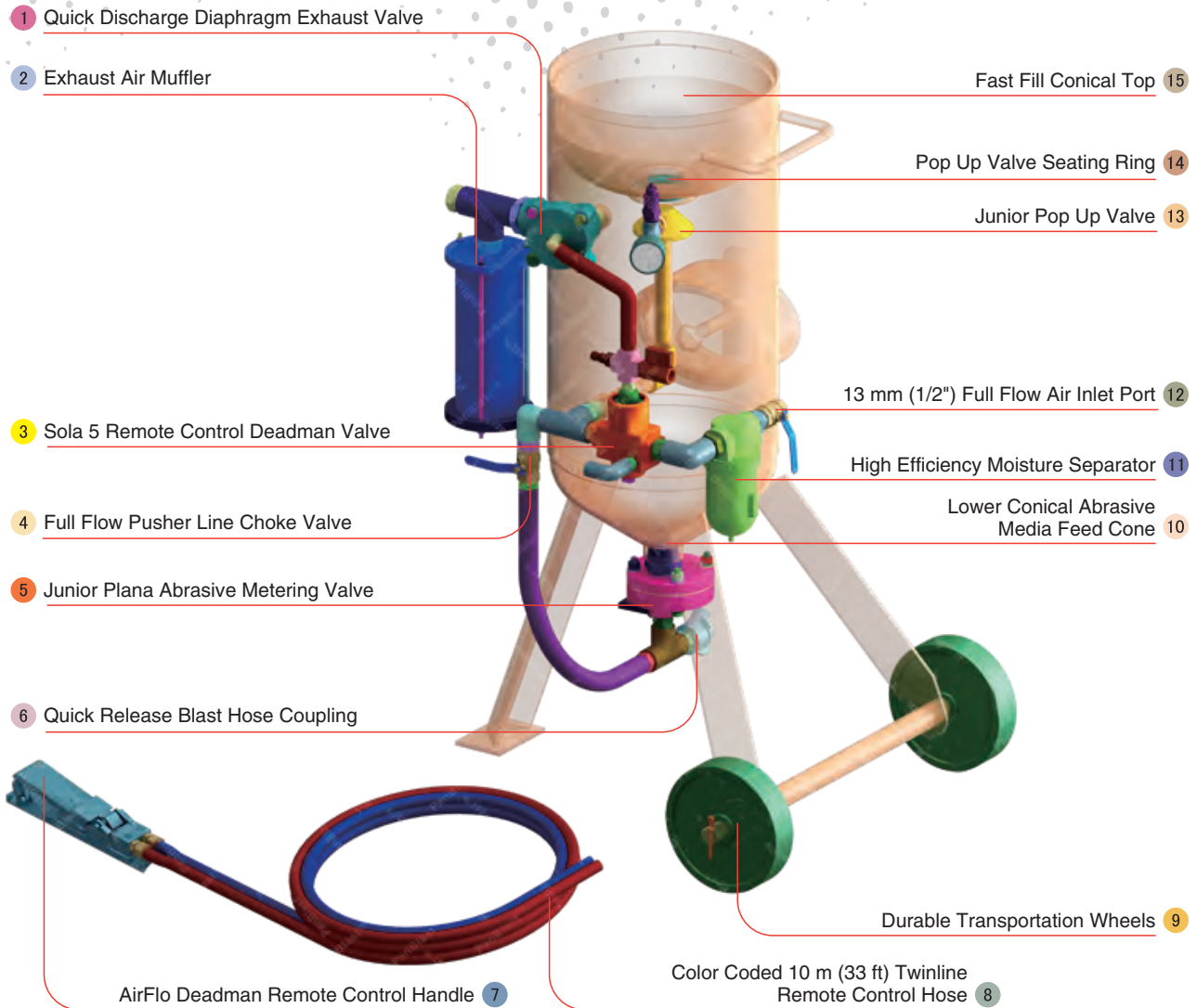
AirFlo Electric Handle



Twinline Hose



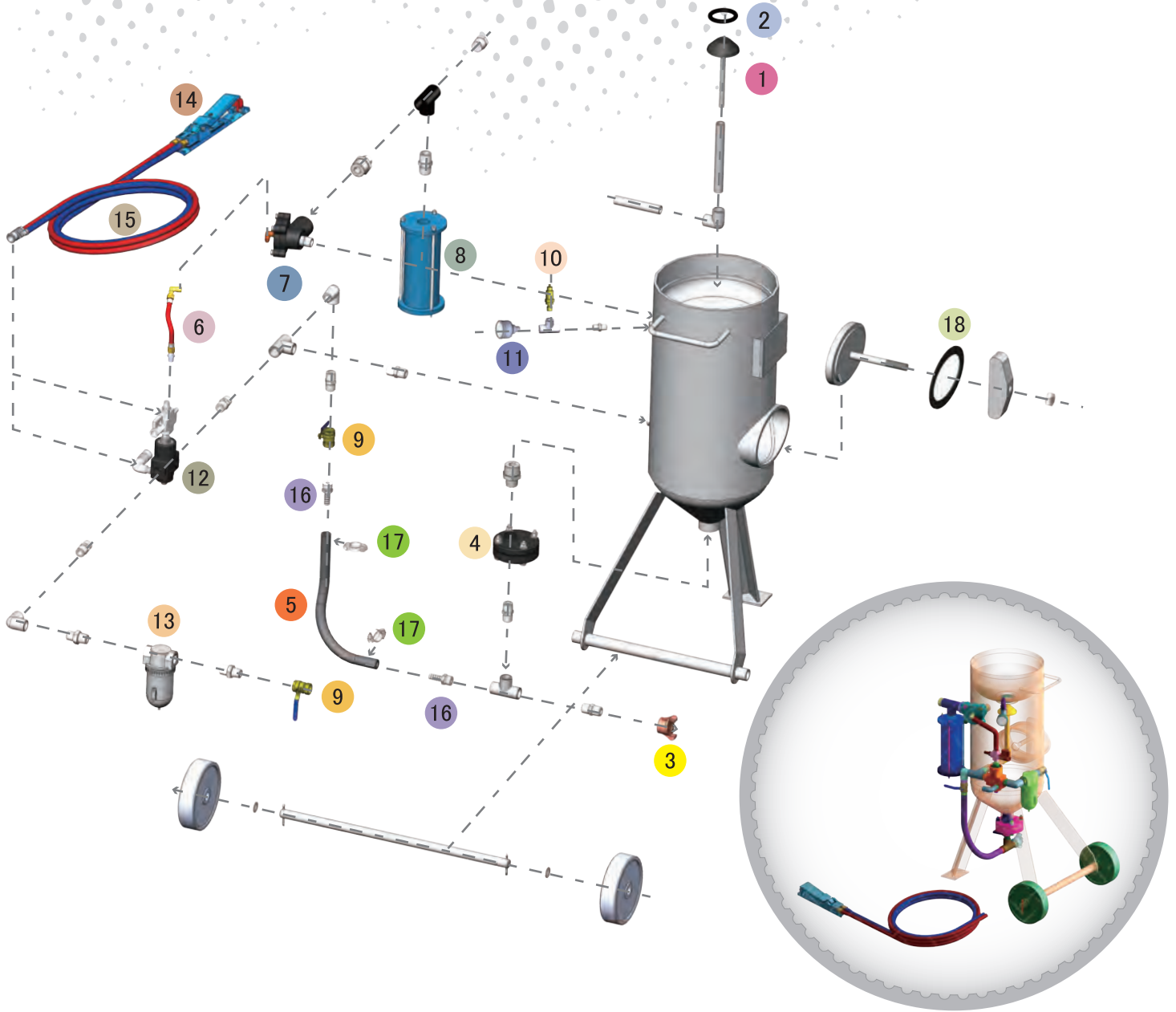
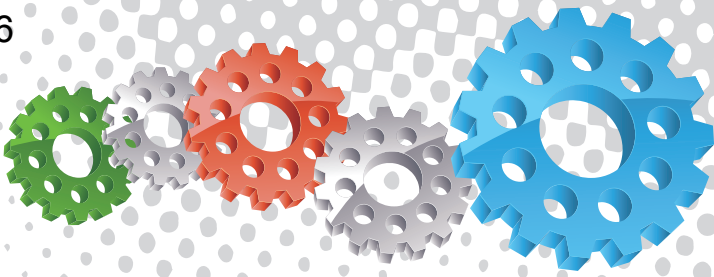
PBF II-1 Airline Filter



Component Highlights



- | | | |
|---|---|--|
| 1 Quick Discharge Diaphragm Exhaust Valve | 6 Quick Release Blast Hose Coupling | 11 High Efficiency Moisture Separator |
| 2 Exhaust Air Muffler | 7 AirFlo Deadman Remote Control Handle | 12 13 mm (1/2") Full Flow Air Inlet Port |
| 3 Sola 5 Remote Control Deadman Valve | 8 Color Coded 10 m (33 ft) Twinline Remote Control Hose | 13 Junior Pop Up Valve |
| 4 Full Flow Pusher Line Choke Valve | 9 Durable Transportation Wheels | 14 Pop Up Valve Seating Ring |
| 5 Junior Plana Abrasive Metering Valve | 10 Lower Conical Abrasive Media Feed Cone | 15 Fast Fill Conical Top |



Assemblies

Stock Code	Description	Dry Weight	Abrasive Capacity
BEP-PS-0001-14	BP50-1/AU Sola5 J/Plana AirFlo 150 PSI	70 kg (155 lbs)	14 litres (0.5 ft³)
BEP-PS-0067-00	BP50-1/MY Sola5 J/Plana AirFlo	70 kg (155 lbs)	14 litres (0.5 ft³)



Parts List



Description	Qty	Description	Qty	Description	Qty
1 Junior Pop Up Valve	1	8 Exhaust Muffler	1	15 10 m (33') Twinline Hose Assembly	1
2 Junior Seating Ring	1	9 13 mm (1/2") Ball Valve	2	16 KC Nipple	2
3 STC-0 Steel Threaded Pot Coupling	1	10 6 mm (1/4") - 125 PSI Pressure Relief Valve	1	17 Hose Clamp	2
4 Junior Plana NPT Valve	1	11 6 mm (1/4") Pressure Gauge - Rear Entry	1	18 Blast Pot-H/Hole 192x144-Sealing Gasket	1
5 Pusher Line	1	12 Sola 5 Inlet Valve Assembly	1		
6 Inter Connecting Hose	1	13 13 mm (1/2") Port Moisture Separator	1		
7 Sola 5 NPT Exhaust Valve	1	14 AirFlo Pneumatic Control Handle	1		



BP110-1 Blast Pots



Product Features

PanBlast™ BP Series Blast Pots are available in multiple configurations and specifications to suit varying market requirements worldwide. The BP110-1 is a medium-capacity, automatic blast pot, suitable for touch-up blasting and small-scale operations.

- ▶ Designed and manufactured in accordance with international standards and requirements.
- ▶ Third party pressure vessel certification available on request.
- ▶ UniFlo combination type remote control valve.
- ▶ AirFlo air-bleed type pneumatic deadman handle.
- ▶ Junior Plana type abrasive control valve with cast aluminium construction.
- ▶ Moisture trap, exhaust muffler and main air isolation valve standard.
- ▶ 31 litres (1.1 ft³) abrasive capacity, 125 or 150 psi pressure rating.
- ▶ 19 mm (3/4") fittings.

Common Applications

- ▶ On site industrial and commercial blasting.
- ▶ Blast and painting contractor yard work.
- ▶ Blast room applications with or without abrasive recovery systems.
- ▶ In situ blasting in shipyards and slipways.

Complementary Products



Blast Hoses



ATN-S Blast Nozzles



Cosmo SAR



VisiFlo Premium Airline Filter



Couplings & Nozzle Holders



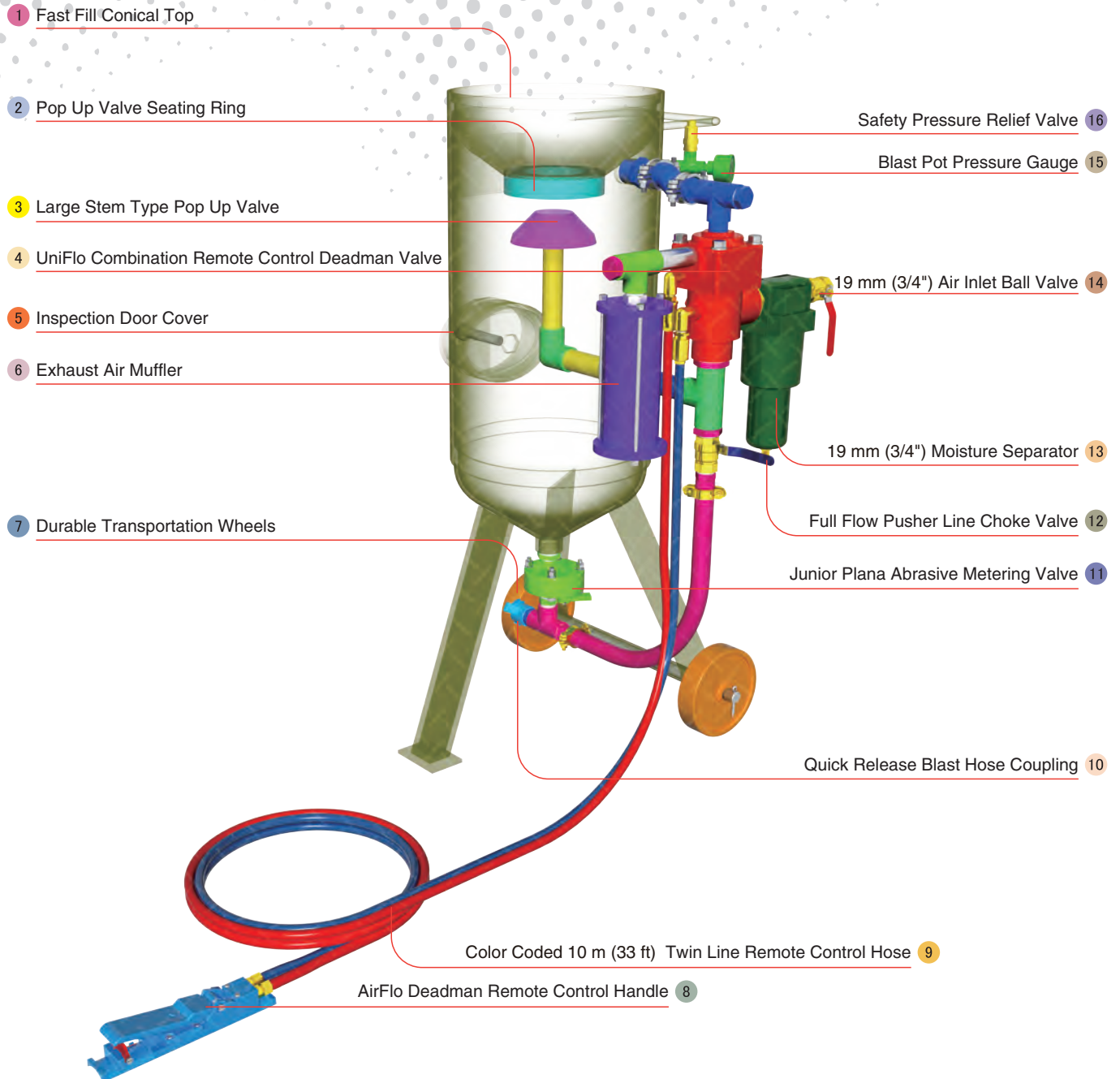
Electric Remote Systems



Whip Check Cables



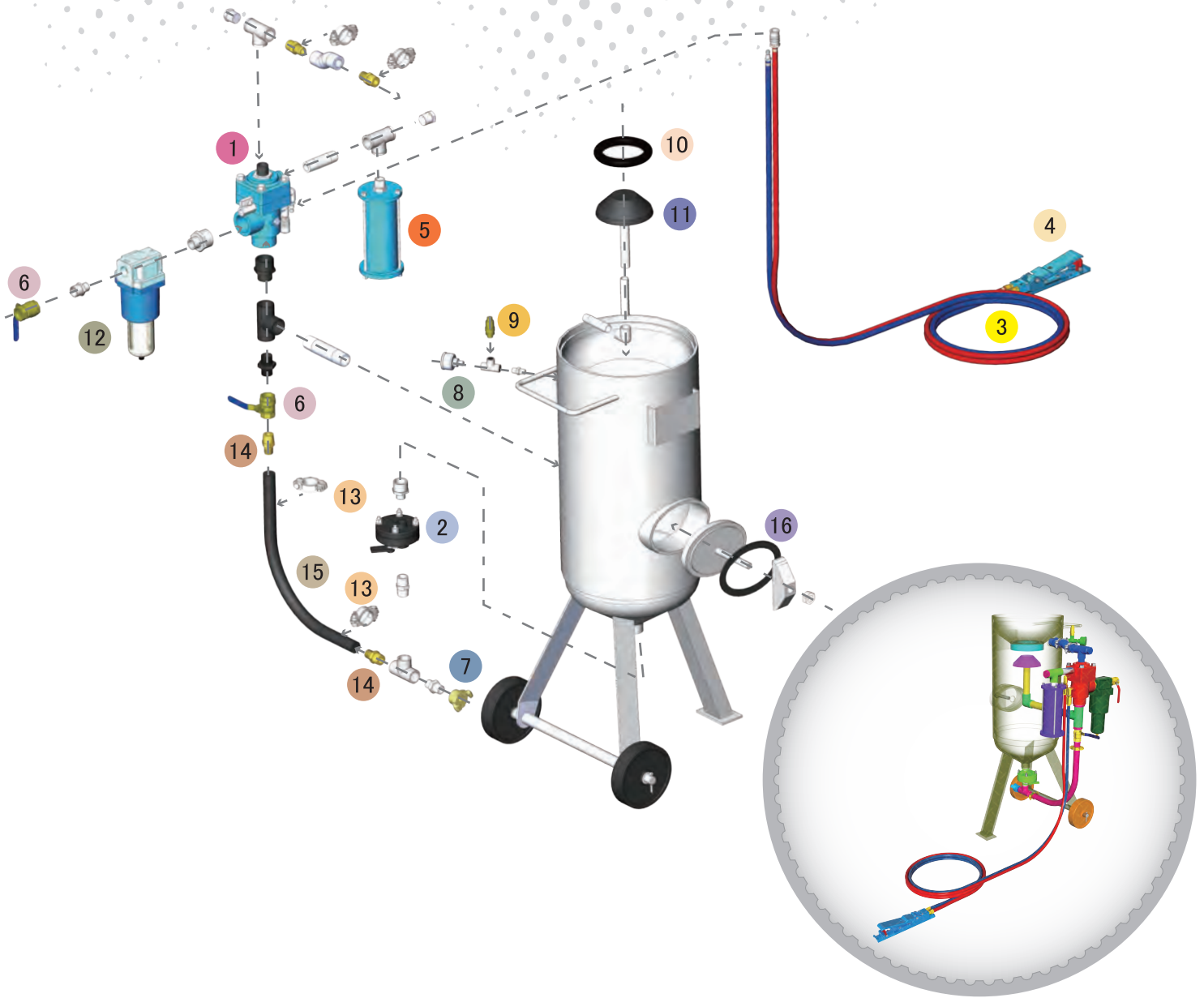
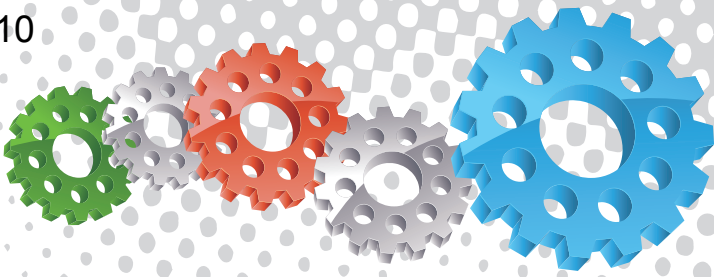
Blasting Suit & Gloves



Component Highlights



- | | | |
|---|--|--------------------------------------|
| 1 Fast Fill Conical Top | 7 Durable Transportation Wheels | 13 19 mm (3/4") Moisture Separator |
| 2 Pop Up Valve Seating Ring | 8 AirFlo Deadman Remote Control Handle | 14 19 mm (3/4") Air Inlet Ball Valve |
| 3 Large Stem Type Pop Up Valve | 9 Color Coded 10 m (33 ft) Twin Line Remote Control Hose | 15 Blast Pot Pressure Gauge |
| 4 UniFlo Combination Remote Control Deadman Valve | 10 Quick Release Blast Hose Coupling | 16 Safety Pressure Relief Valve |
| 5 Inspection Door Cover | 11 Junior Plana Abrasive Metering Valve | |
| 6 Exhaust Air Muffler | 12 Full Flow Pusher Line Choke Valve | |



Assemblies

Stock Code	Description	Dry Weight	Abrasive Capacity
BEP-PS-0065-00	BP110-1/SG UniFlo J/Plana AirFlo	90 kg (200 lbs)	31 litres (1.1 ft³)
BEP-PS-0074-00	BP110-1/AU/MY/NZ UniFlo J/Plana AirFlo	90 kg (200 lbs)	31 litres (1.1 ft³)

Notation:

AU: Approved by Worksafe, Australia.
 MY: Approved by Department of Occupational Safety and Health, Malaysia.
 NZ: Approved by Department of Labour, New Zealand.
 SG: Approved by Ministry of Manpower, Singapore.



Parts List



Description	Qty	Description	Qty	Description	Qty
1 UniFlo Valve With Fittings - 90 Degree	1	7 STC-1/2 Steel Threaded Pot Coupling	1	13 Hose Clamp	2
2 Junior Plana NPT Valve	1	8 6 mm (1/4") Pressure Gauge - Rear Entry	1	14 KC Nipple	2
3 10 m (33') Twinline Hose Assembly	1	9 6 mm (1/4") 125psi Pressure Relief Valve	1	15 19 mm (3/4") Air Supply Hose	0.7 m
4 AirFlo Pneumatic Control Handle	1	10 Pop Up Valve Seating Ring	1	16 Blast Pot-H/Hole 192x144 -Sealing Gasket	1
5 Exhaust Muffler	1	11 Pop Up Valve - Stem Type	1		
6 19 mm (3/4") Ball Valve	2	12 19 mm (3/4") Port Moisture Separator	1		



BP110-1/AU/MY/NZ Blast Pot



Complementary Products



Blast Hoses



Cosmo SAR



Couplings & Nozzle Holders



Whip Check Cables



ATN Blast Nozzles



VisiFlo Premium Airline Filter



Electric Remote Systems



Blasting Suit & Gloves



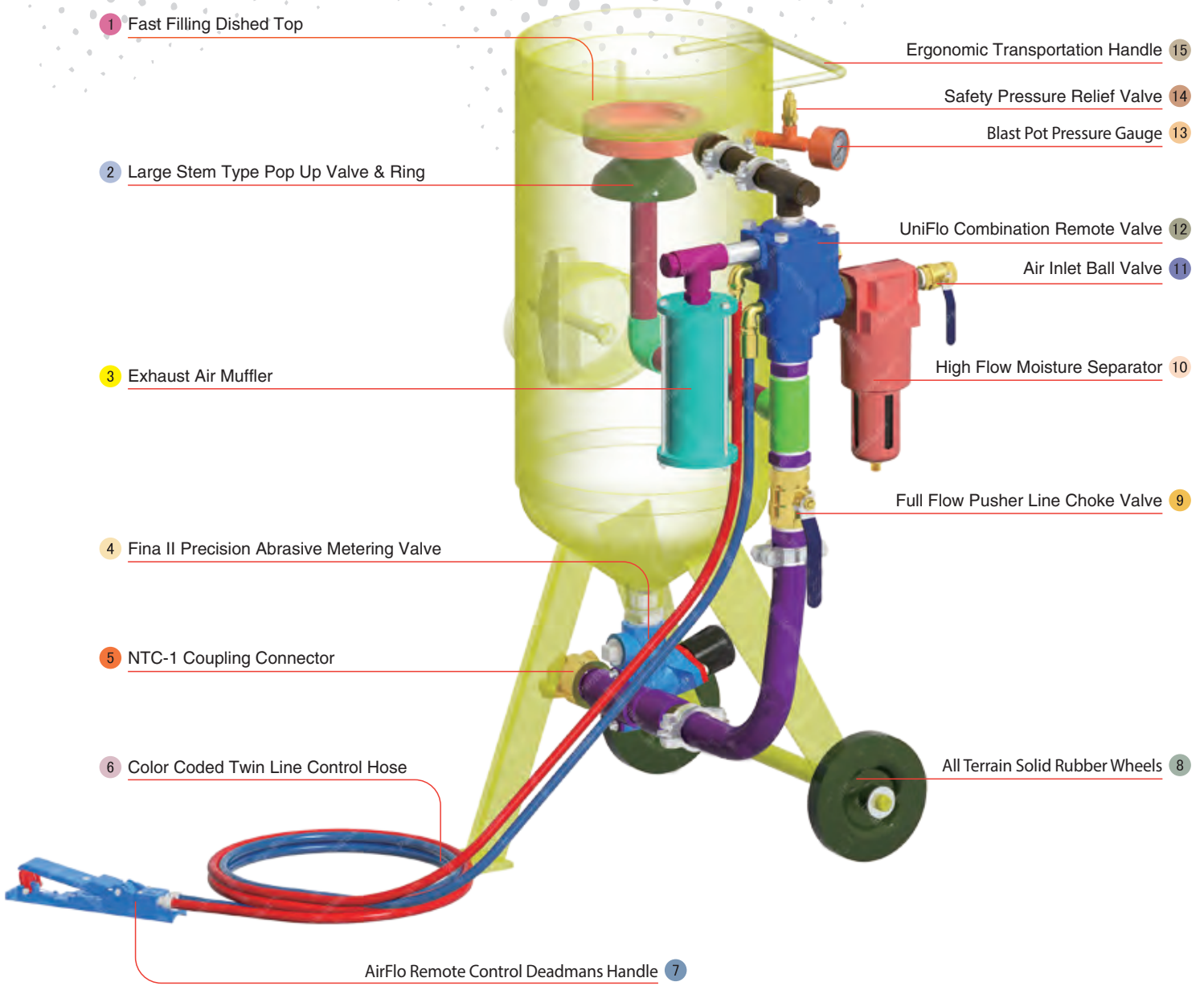
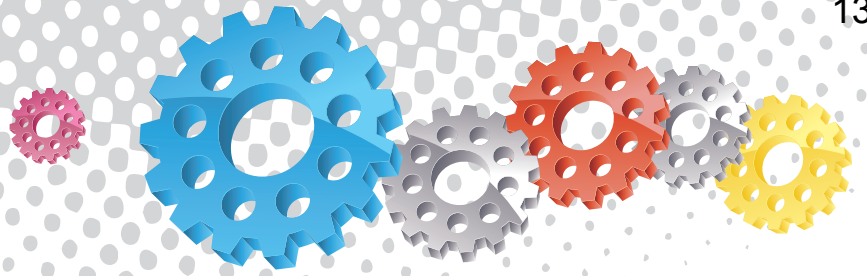
Product Features

PanBlast™ BP Series Blast Pots are available in multiple configurations and specifications to suit varying market requirements worldwide. The BP110-1 is a medium-capacity, automatic blast pot, suitable for touch-up blasting and small-scale operations.

- ▶ Designed and manufactured in accordance with international standards and requirements.
- ▶ Third party pressure vessel certificates available on request.
- ▶ UniFlo combination type remote control valve.
- ▶ AirFlo air-bleed type pneumatic deadman handle
- ▶ Fina II type abrasive control valve for precise metering and easy maintenance.
- ▶ Moisture trap, exhaust muffler and main air isolation valve standard.
- ▶ 31 litres (1.1 ft³) abrasive capacity, 125 psi pressure rating.
- ▶ 32 mm (1-1/4") fittings.

Common Applications

- ▶ On site industrial and commercial blasting.
- ▶ Blast and painting contractor yard work.
- ▶ Blast room applications with or without abrasive recovery systems.
- ▶ In situ blasting in shipyards and slipways.



1 Fast Filling Dished Top

2 Large Stem Type Pop Up Valve & Ring

3 Exhaust Air Muffler

4 Fina II Precision Abrasive Metering Valve

5 NTC-1 Coupling Connector

6 Color Coded Twin Line Control Hose

AirFlo Remote Control Deadmans Handle 7

Ergonomic Transportation Handle 15

Safety Pressure Relief Valve 14

Blast Pot Pressure Gauge 13

UniFlo Combination Remote Valve 12

Air Inlet Ball Valve 11

High Flow Moisture Separator 10

Full Flow Pusher Line Choke Valve 9

All Terrain Solid Rubber Wheels 8

Component Highlights



1 Fast Filling Dished Top

2 Large Stem Type Pop Up Valve & Ring

3 Exhaust Air Muffler

4 Fina II Precision Abrasive Metering Valve

5 NTC-1 Coupling Connector

6 Color Coded Twin Line Control Hose

7 AirFlo Remote Control Deadmans Handle

8 All Terrain Solid Rubber Wheels

9 Full Flow Pusher Line Choke Valve

10 High Flow Moisture Separator

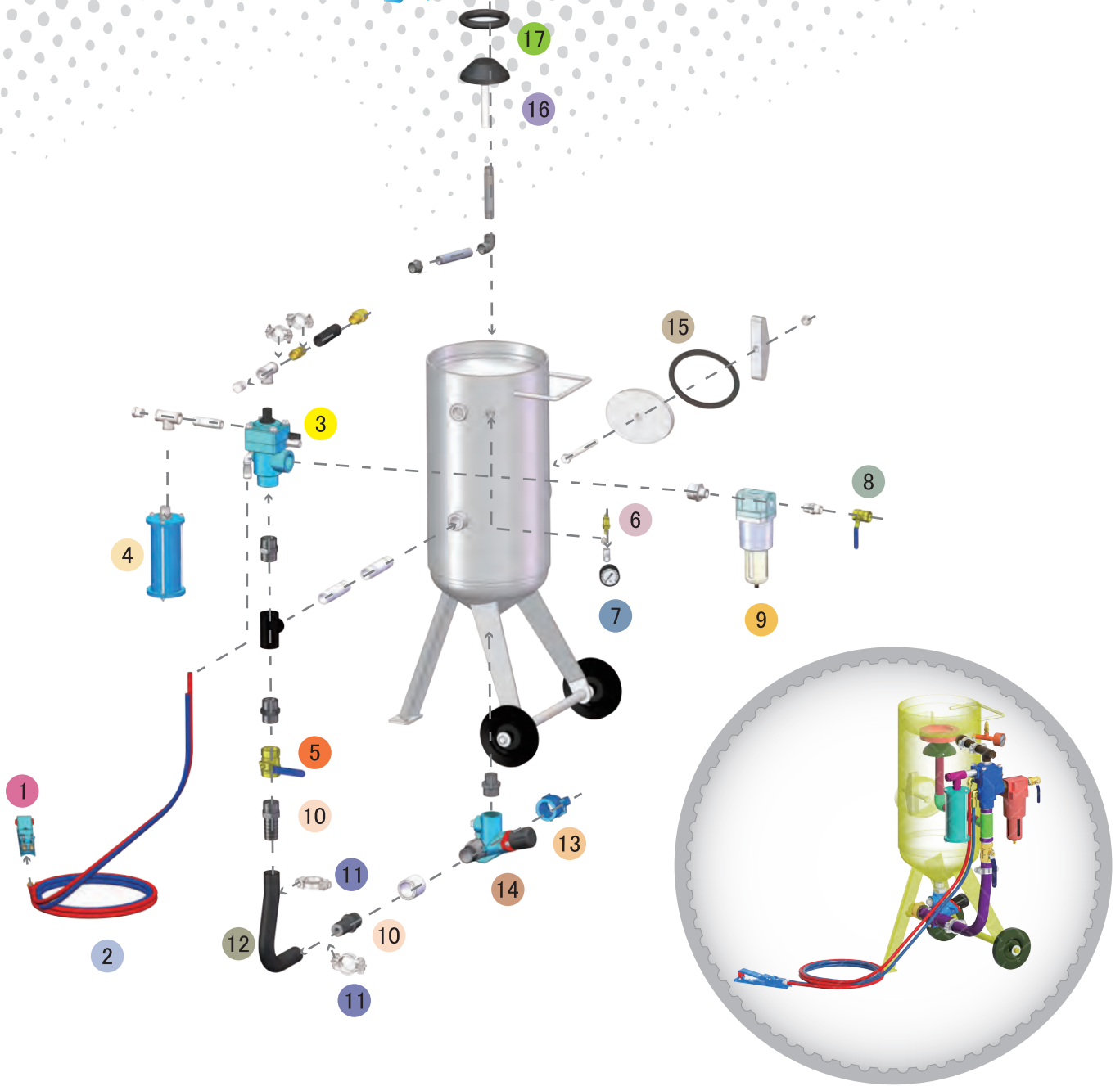
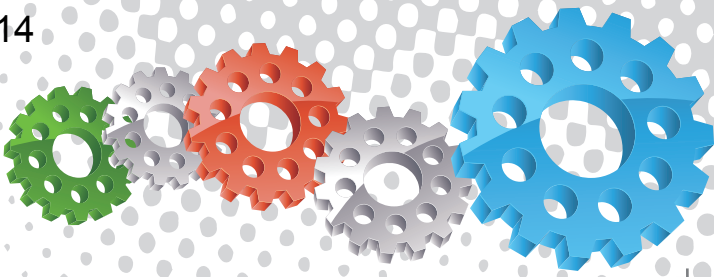
11 Air Inlet Ball Valve

12 UniFlo Combination Remote Valve

13 Blast Pot Pressure Gauge

14 Safety Pressure Relief Valve

15 Ergonomic Transportation Handle



Assembly

Stock Code	Description	Dry Weight	Abrasive Capacity	Piping Size
BEP-PS-0058-00	BP110-1/AU/MY/NZ UniFlo Fina II AirFlo	90 kg (198 lbs)	31 litres (1.1 ft³)	19 mm (3/4")



Parts List



Description	Qty	Description	Qty	Description	Qty
1 AirFlo Pneumatic Control Handle	1	7 6 mm (1/4") Pressure Gauge - Rear Entry	1	13 NTC-1 Nylon Threaded Pot Coupling	1
2 10 m (33') Twinline Hose Assembly	1	8 19 mm (3/4") Ball Valve	1	14 Fina II Valve 1-1/4"M x 1-1/4"M	1
3 UniFlo Valve With Fittings - 90 Deg	1	9 19 mm (3/4") Port Moisture Separator	1	15 Blast Pot-H/Hole 192 x 144 -Sealing Gasket	1
4 Exhaust Muffler	1	10 KC Nipple	2	16 Pop Up Valve - Stem Type	1
5 32 mm (1-1/4") Ball Valve	1	11 Hose Clamp	2	17 Pop Up Valve Seating Ring	1
6 6 mm (1/4")-125 PSI Pressure Relief Valve	1	12 32 mm (1-1/4") Air Supply Hose	0.4 m		



BP300-1/CE Blast Pot



Product Features

PanBlast™ BP Series Blast Pots are available in multiple configurations and specifications to suit varying market requirements worldwide. The BP300-1 is a medium-capacity, automatic blast pot, suitable for general blasting.

- ▶ Designed and manufactured in accordance with international standards and requirements.
- ▶ UniFlo combination type remote control valve.
- ▶ AirFlo air-bleed type pneumatic deadman handle.
- ▶ Fina II type abrasive control valve for precise metering and easy maintenance.
- ▶ Moisture trap, exhaust muffler and main air isolation valve standard.
- ▶ Wide, pneumatic wheels for increased maneuverability and stability.
- ▶ 100 liters (3 ft³) abrasive capacity, 125 psi pressure rating.
- ▶ 32 mm (1-1/4") fittings.

Common Applications

- ▶ On site industrial and commercial blasting.
- ▶ Blast and painting contractor yard work.
- ▶ Blast room applications with or without abrasive recovery systems.
- ▶ In situ blasting in shipyards and slipways.

Complementary Products



Blast Hoses



Electric Remote Conversion Kit



Safe-T-Pinch Valve



ATV Blast Nozzles



Titan II SAR



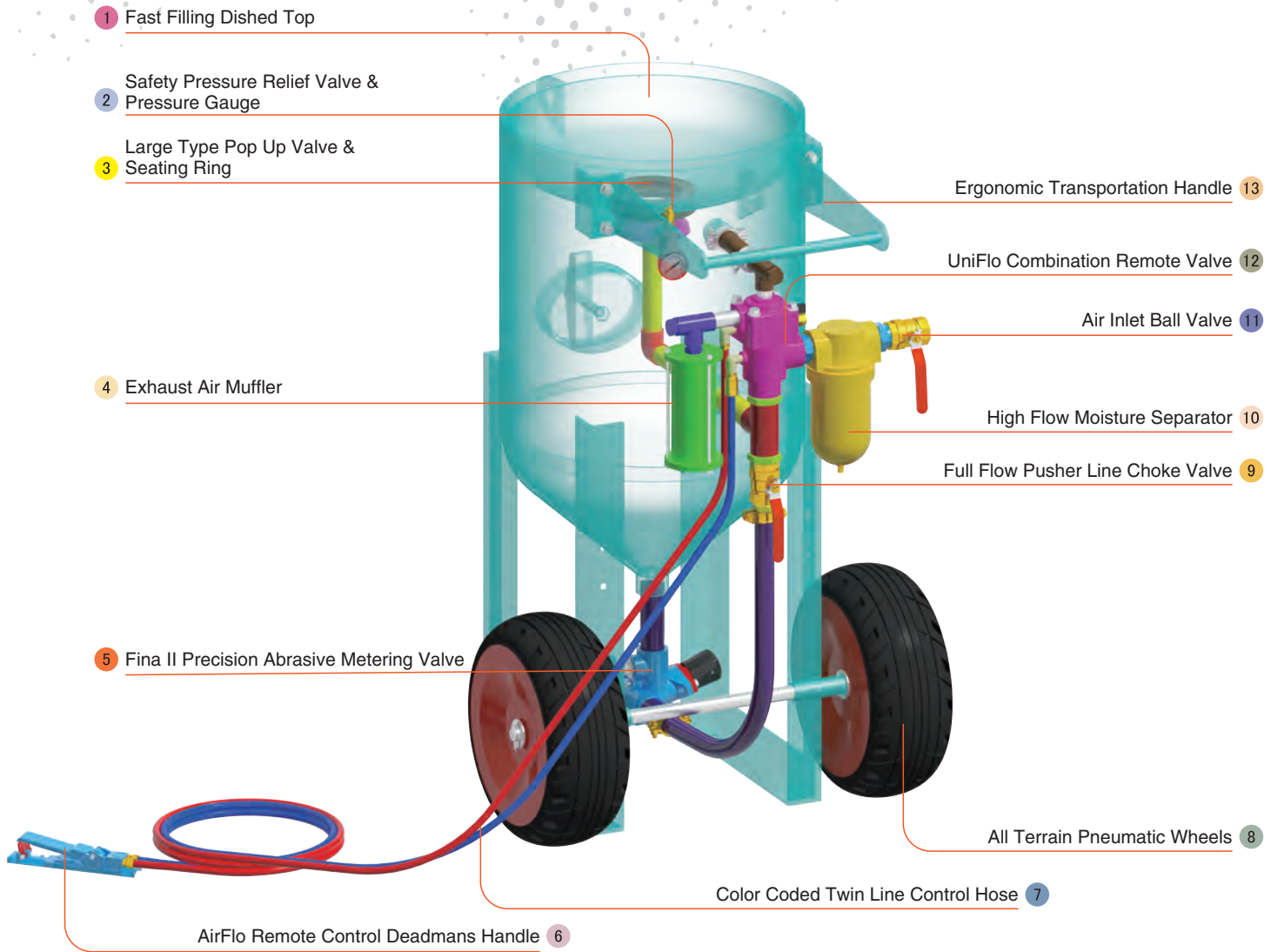
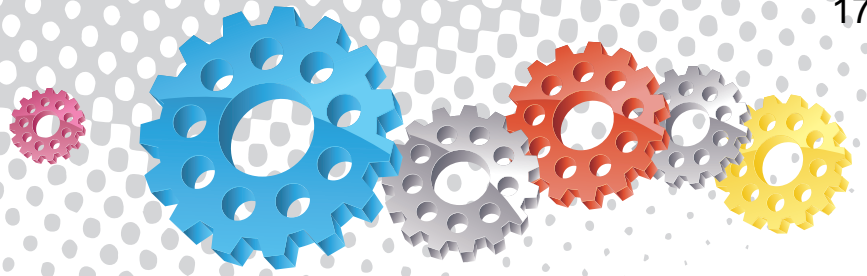
ProFlo Recycling System



VisiFlo Premium Airline Filter



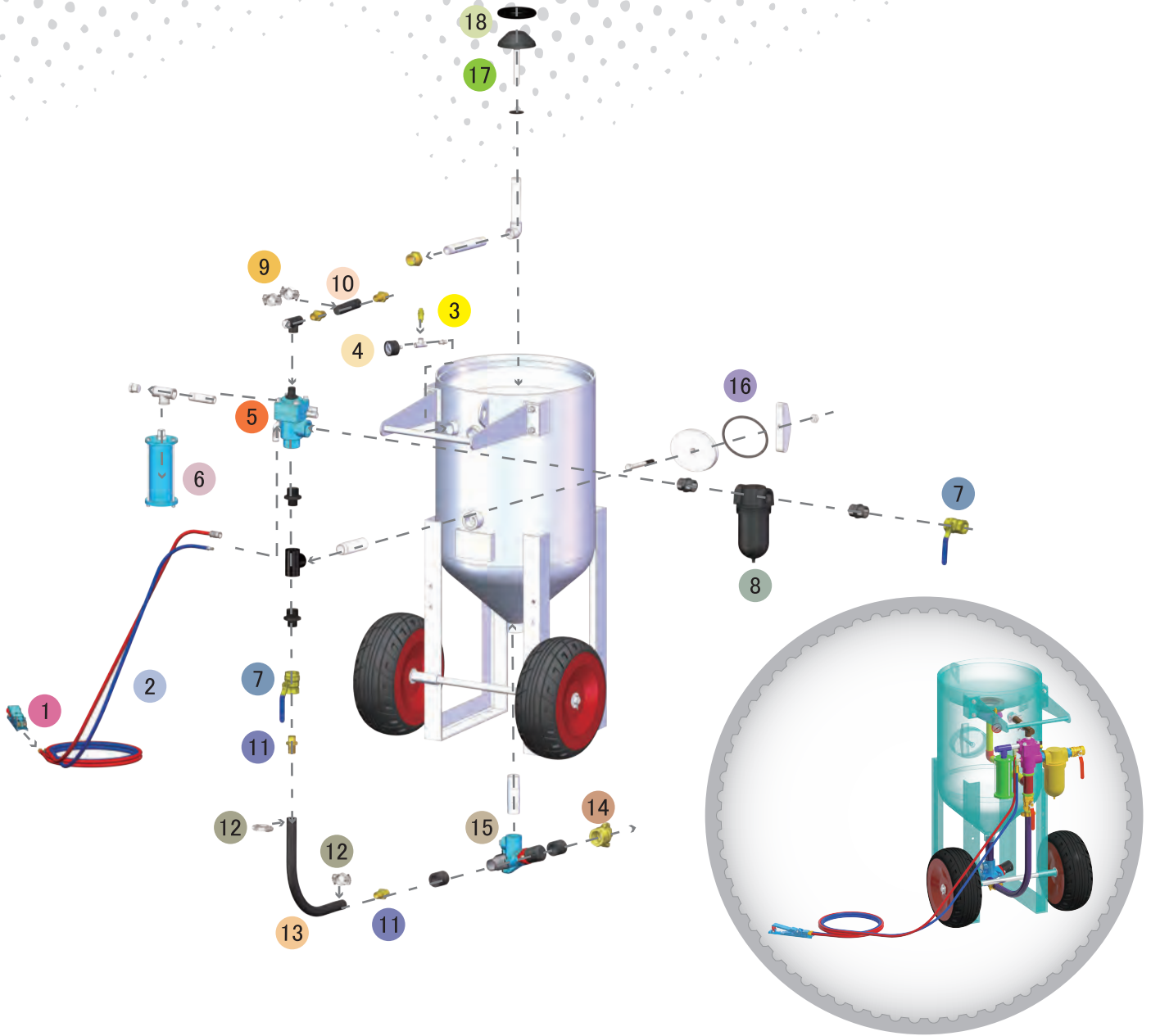
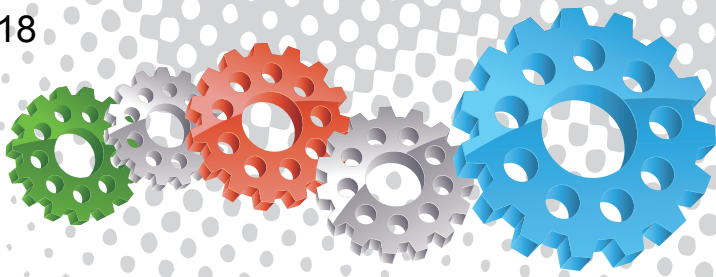
Airless Spray Pumps



Component Highlights



- | | | |
|---|---|------------------------------------|
| 1 Fast Filling Dished Top | 6 AirFlo Remote Control Deadmans Handle | 11 Air Inlet Ball Valve |
| 2 Safety Pressure Relief Valve & Pressure Gauge | 7 Color Coded Twin Line Control Hose | 12 UniFlo Combination Remote Valve |
| 3 Large Type Pop Up Valve & Seating Ring | 8 All Terrain Pneumatic Wheels | 13 Ergonomic Transportation Handle |
| 4 Exhaust Air Muffler | 9 Full Flow Pusher Line Choke Valve | |
| 5 Fina II Precision Abrasive Metering Valve | 10 High Flow Moisture Separator | |



Assembly

Stock Code	Description	Dry Weight	Abrasive Capacity	Piping Size
BEP-PS-0078-00	BP300-1/CE UniFlo Fina II AirFlo	155 kg (342 lbs)	100 litres (3 ft ³)	32 mm (1-1/4")



Parts List



Description	Qty	Description	Qty	Description	Qty
1 AirFlo Pneumatic Control Handle	1	7 32 mm (1-1/4") Ball Valve	2	13 32 mm (1-1/4") Air Supply Hose	0.65 m
2 20 m (66') Twinline Hose Assembly	1	8 32 mm(1-1/4") Port Moisture Separator	1	14 STC-1 Steel Threaded Pot Coupling	1
3 1/2" BSP - 125 PSI Pressure Relief Valve	1	9 Hose Clamp	2	15 Fina II Valve 1-1/4"M x 1-1/4"M	1
4 6 mm (1/4") Pressure Gauge - Rear Entry	1	10 25mm (1") Air Supply Hose	0.15 m	16 Blast Pot-H/Hole 192 x 144-Sealing Gasket	1
5 UniFlo Valve With Fittings - 90 Deg	1	11 KC Nipple	2	17 Pop Up Valve - Stem Type	1
6 Exhaust Muffler	1	12 Hose Clamp	2	18 Pop Up Valve Seating Ring	1



BP316-1/AU/MY/NZ Blast Pot



Complementary Products



Blast Hoses



Safe-T-Pinch Valve



Spartan Blast Helmet



PBF II-1 Airline Filter



Electric Remote Conversion Kit



ATN Blast Nozzles



ProFlo Recycling System



Airless Spray Pumps



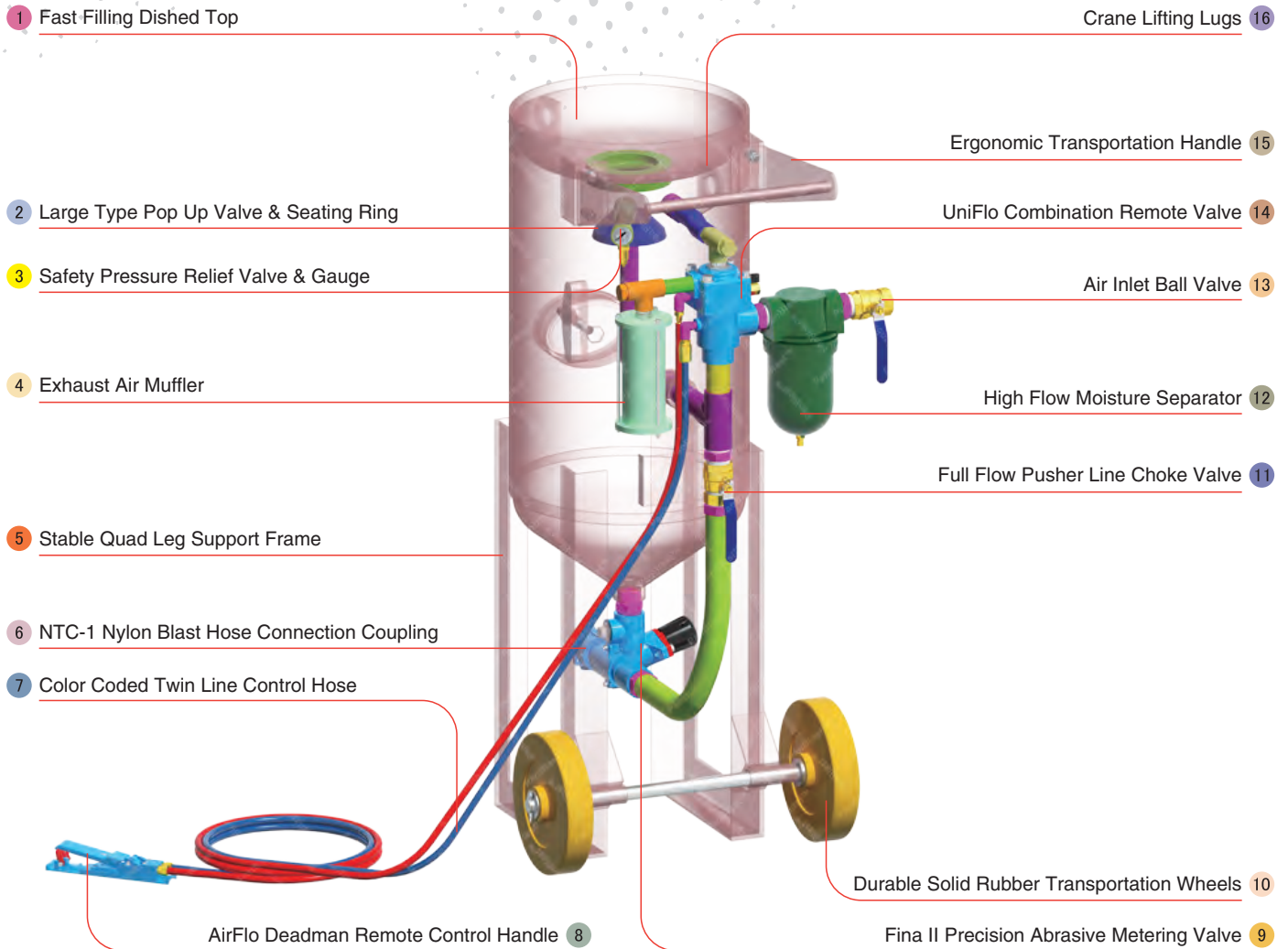
Product Features

PanBlast™ BP 316-1/AU/MY/NZ Blast Pot are available in multiple configurations and specifications to suit varying market requirements worldwide. The BP316-1 is a medium-capacity, automatic blast pot, suitable for general blasting.

- ▶ Designed and manufactured in accordance with international standards and requirements.
- ▶ Third party pressure vessel certificates available on request.
- ▶ UniFlo combination type remote control valve.
- ▶ AirFlo air-bleed type pneumatic deadman handle
- ▶ Fina II type abrasive control valve for precise metering and easy maintenance.
- ▶ Moisture trap, exhaust muffler and main air isolation valve standard.
- ▶ Wide, solid rubber wheels for increased maneuverability and stability.
- ▶ 100 liters (3 ft³) abrasive capacity, 125 psi pressure rating.
- ▶ 32 mm (1-1/4") fittings.

Common Applications

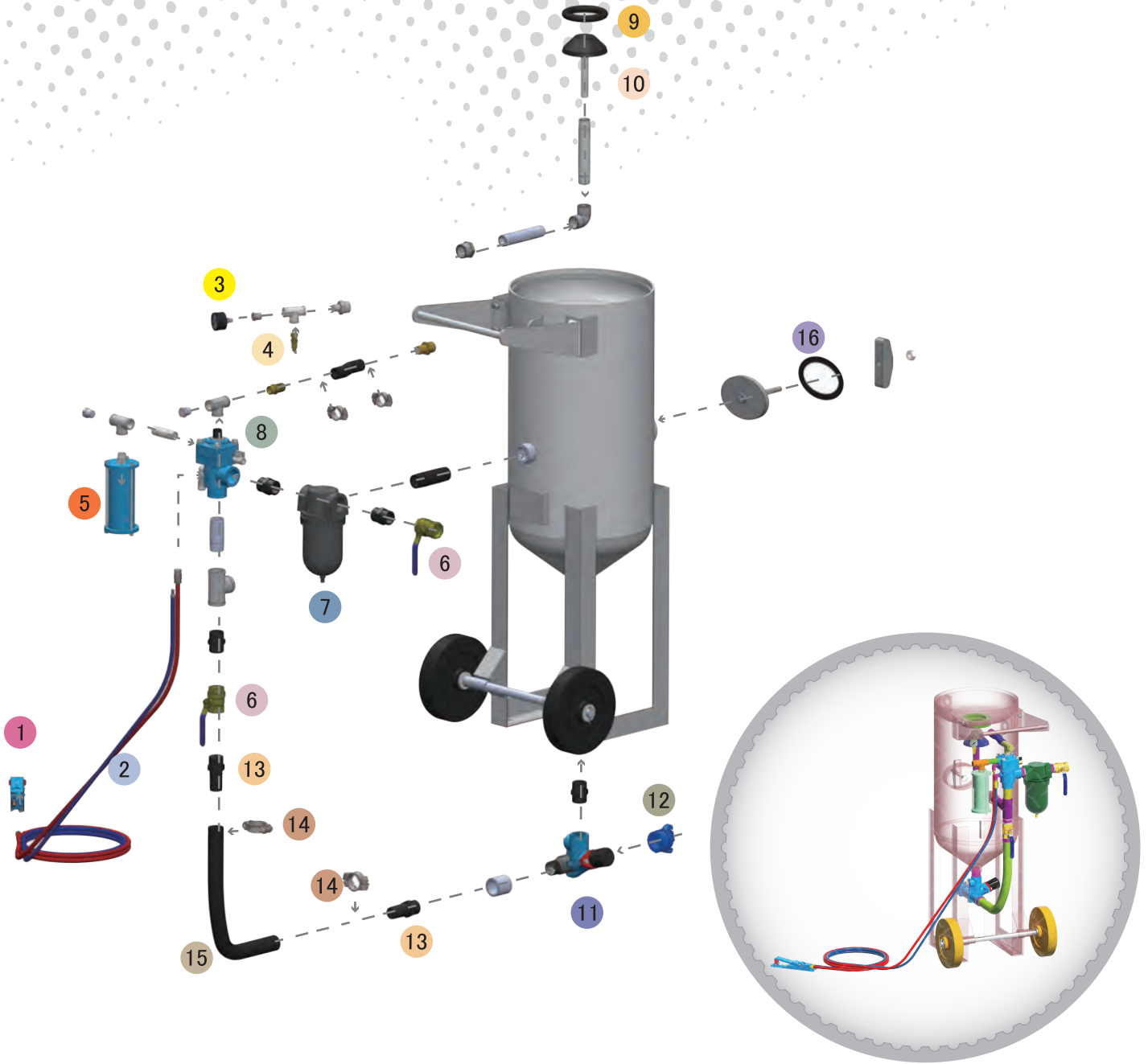
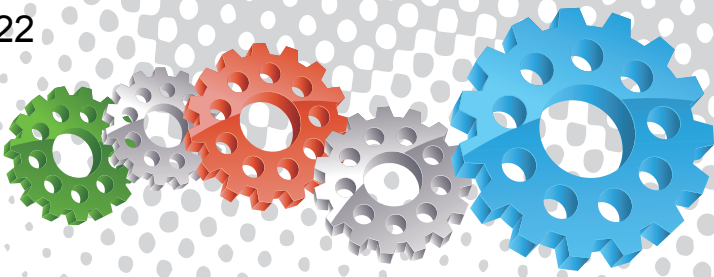
- ▶ On site industrial and commercial blasting.
- ▶ Blast and painting contractor yard work.
- ▶ Blast room applications with or without abrasive recovery systems.
- ▶ In situ blasting in shipyards and slipways.



Component Highlights



- | | | |
|--|---|------------------------------------|
| 1 Fast Filling Dished Top | 7 Color Coded Twin Line Control Hose | 13 Air Inlet Ball Valve |
| 2 Large Type Pop Up Valve & Seating Ring | 8 AirFlo Deadman Remote Control Handle | 14 UniFlo Combination Remote Valve |
| 3 Safety Pressure Relief Valve & Gauge | 9 Fina II Precision Abrasive Metering Valve | 15 Ergonomic Transportation Handle |
| 4 Exhaust Air Muffler | 10 Durable Solid Rubber Transportation Wheels | 16 Crane Lifting Lugs |
| 5 Stable Quad Leg Support Frame | 11 Full Flow Pusher Line Choke Valve | |
| 6 NTC-1 Nylon Blast Hose Connection Coupling | 12 High Flow Moisture Separator | |



Assembly

Stock Code	Description	Dry Weight	Abrasive Capacity	Piping Size
BEP-PS-0064-00	BP316-1/AU/MY/NZ UniFlo Fina II AirFlo	150 kg (330 lbs)	100 litres (3 ft³)	32 mm (1-1/4")



Parts List



Description	Qty	Description	Qty	Description	Qty
1 AirFlo Pneumatic Control Handle	1	7 32 mm (1-1/4'') Port Moisture Separator	1	13 KC Nipple	2
2 20 m (66') Twinline Hose Assembly	1	8 Uniflo Valve With Fittings - 90 Deg	1	14 Hose Clamp	2
3 6 mm (1/4'') Pressure Gauge - Rear Entry	1	9 Pop Up Valve Seating Ring	1	15 32 mm (1-1/4'') Air Supply Hose	0.7 m
4 1/2' BSP - 125 PSI Pressure Relief Valve	1	10 Pop Up Valve - Stem Type	1	16 Blast Pot-H/Hole 192 x 144-Sealing Gasket	1
5 Exhaust Muffler	1	11 Fina II Valve 1-1/4'M x 1-1/4'M	1		
6 32 mm (1-1/4'') Ball Valve	2	12 NTC-1 Nylon Threaded Pot Coupling	1		



BP316-2/AU/MY/NZ Blast Pot



Product Features

PanBlast™ BP Series Blast Pots are available in multiple configurations and specifications to suit varying market requirements worldwide. The BP316-2 is a medium-capacity, automatic blast pot, suitable for general blasting.

- ▶ Designed and manufactured in accordance with international standards and requirements.
- ▶ Third party pressure vessel certificates available on request.
- ▶ Separate Tandem air inlet and exhaust valves, for fast and efficient operation.
- ▶ AirStop non-bleed type pneumatic deadman handle.
- ▶ Corsa II type automatic pressure-hold abrasive control valve for precise metering and easy maintenance.
- ▶ Moisture trap, exhaust muffler and main air isolation valve standard.
- ▶ Wide, pneumatic wheels for increased maneuverability and stability.
- ▶ 100 litres (3 ft³) abrasive capacity, 125 psi pressure rating.
- ▶ 32 mm (1-1/4") fittings.

Common Applications

- ▶ On site industrial and commercial blasting.
- ▶ Blast and painting contractor yard work.
- ▶ Blast room applications with or without abrasive recovery systems.
- ▶ In situ blasting in shipyards and slipways.

Complementary Products



Blast Hoses



Electric Remote Conversion Kit



Safe-T-Pinch Valve



ATN Blast Nozzles



Spartan Blast Helmet



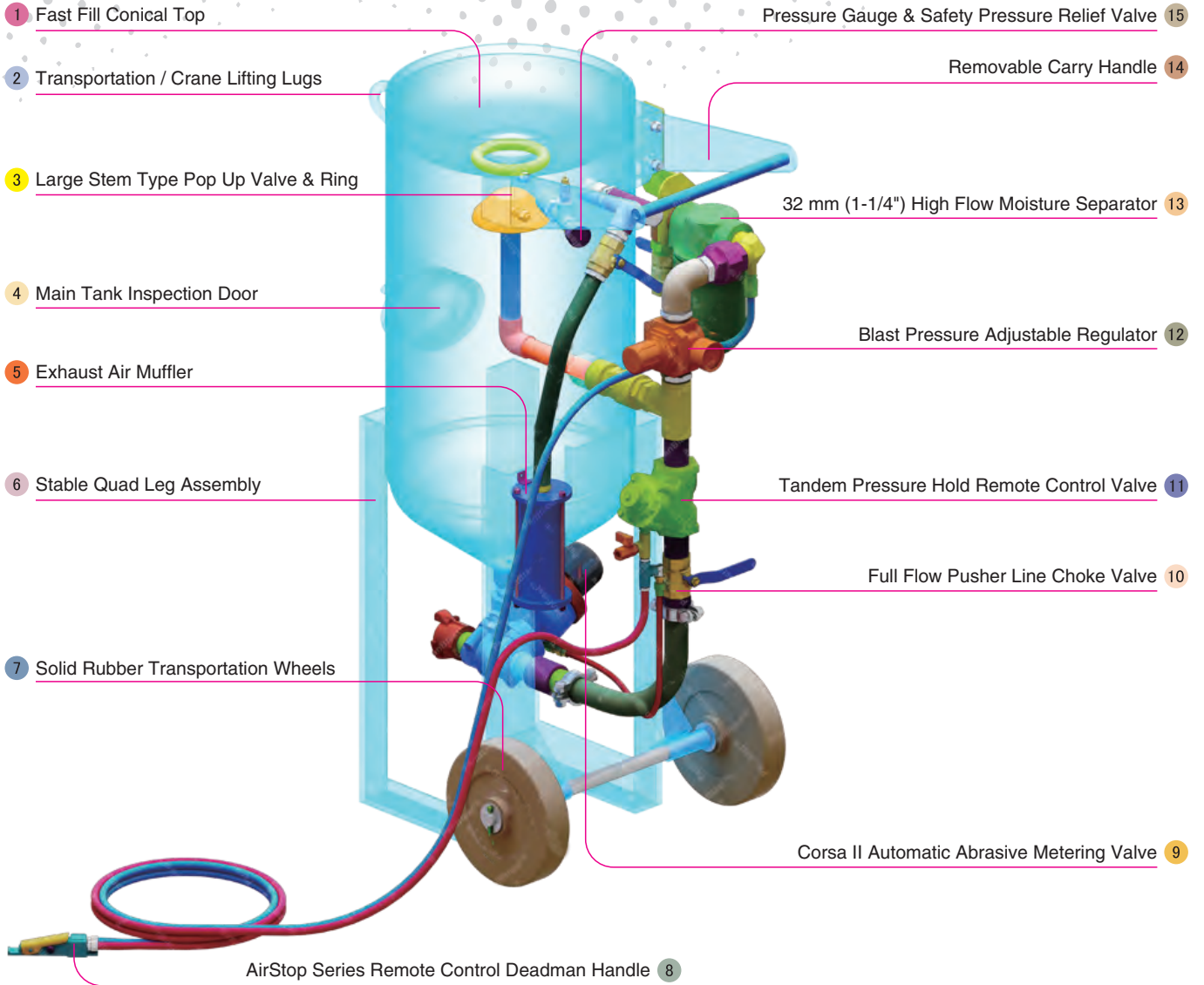
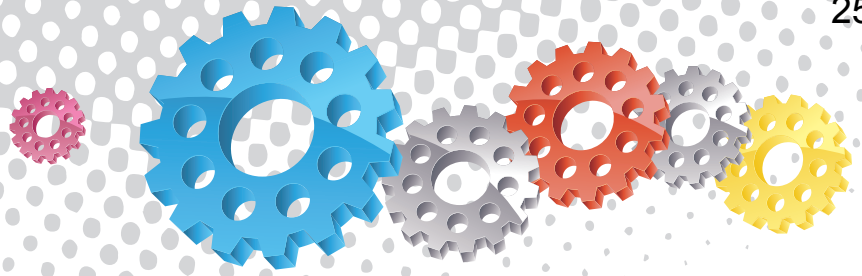
ProFlo Recycling System



PBF II-1 Airline Filter



Airless Spray Pumps

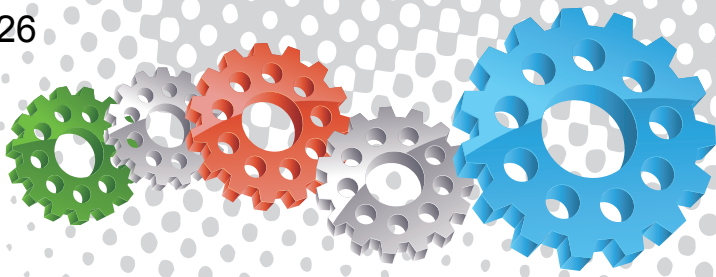


- 1 Fast Fill Conical Top
- 2 Transportation / Crane Lifting Lugs
- 3 Large Stem Type Pop Up Valve & Ring
- 4 Main Tank Inspection Door
- 5 Exhaust Air Muffler
- 6 Stable Quad Leg Assembly
- 7 Solid Rubber Transportation Wheels
- 8 AirStop Series Remote Control Deadman Handle
- 9 Corsa II Automatic Abrasive Metering Valve
- 10 Full Flow Pusher Line Choke Valve
- 11 Tandem Pressure Hold Remote Control Valve
- 12 Blast Pressure Adjustable Regulator
- 13 32 mm (1-1/4") High Flow Moisture Separator
- 14 Removable Carry Handle
- 15 Pressure Gauge & Safety Pressure Relief Valve

Component Highlights



- 1 Fast Fill Conical Top
- 2 Transportation / Crane Lifting Lugs
- 3 Large Stem Type Pop Up Valve & Ring
- 4 Main Tank Inspection Door
- 5 Exhaust Air Muffler
- 6 Stable Quad Leg Assembly
- 7 Solid Rubber Transportation Wheels
- 8 AirStop Series Remote Control Deadman Handle
- 9 Corsa II Automatic Abrasive Metering Valve
- 10 Full Flow Pusher Line Choke Valve
- 11 Tandem Pressure Hold Remote Control Valve
- 12 Blast Pressure Adjustable Regulator
- 13 32 mm (1-1/4") High Flow Moisture Separator
- 14 Removable Carry Handle
- 15 Pressure Gauge & Safety Pressure Relief Valve



Assembly

Stock Code	Description	Dry Weight	Abrasive Capacity	Piping Size
BEP-PS-0077-00	BP316-2/AU/MY/NZ Tandem Corsa II-US AirStop	145 kg (320 lbs)	100 litres (3 ft ³)	32 mm (1-1/4")



Parts List



Description	Qty	Description	Qty	Description	Qty
1 AirStop Pneumatic Control Handle	1	10 1-1/4" Tandem NPT Valve Assembly	1	19 Hose Clamp	2
2 20 m (66') Twinline Hose Assembly	1	11 Mini Ball Valve	1	20 32 mm (1-1/4") Air Supply Hose	0.55 m
3 1/2" BSP - 125 PSI Pressure Relief Valve	1	12 Support Bracket	1	21 NTC-1 Nylon Threaded Pot Coupling	1
4 6 mm (1/4") Pressure Gauge - Rear Entry	1	13 Elbow	1	22 Corsa II 1-1/4" With Urethane Sleeve	1
5 25 mm (1") Ball Valve	1	14 32 mm (1-1/4") Port Moisture Separator	1	23 Blast Pot-H/Hole 192 x 144 -Sealing Gasket	1
6 Hose Barb	1	15 32 mm (1-1/4") Ball Valve	2	24 Pop Up Valve - Stem Type	1
7 Hose Clamp	2	16 32 mm (1-1/4") Non Return Valve	1	25 Pop Up Valve Seating Ring	1
8 25 mm (1") Pressure Regulator with Gauge	1	17 Exhaust Muffler	1		
9 19 mm (3/4") Air Supply Hose	0.4 m	18 KC Nipple	2		



BP600-1/AU/NZ Blast Pot



Product Features

PanBlast™ BP Series Blast Pots are available in multiple configurations and specifications to suit varying market requirements worldwide. The BP600-1 is a full-size, automatic blast pot, suitable for large-scale blasting operations.

- ▶ Designed and manufactured in accordance with international standards and requirements.
- ▶ Third party pressure vessel certificates available on request.
- ▶ UniFlo combination type remote control valve.
- ▶ AirFlo air-bleed type pneumatic deadman handle.
- ▶ Fina type abrasive control valve for precise metering.
- ▶ Moisture trap, exhaust muffler and main air isolation valve standard.
- ▶ Wide, pneumatic wheels for increased maneuverability and stability.
- ▶ 200 litres (6 ft³) abrasive capacity, 125 psi pressure rating.
- ▶ 32 mm (1-1/4") fittings.

Common Applications

- ▶ On site industrial and commercial blasting.
- ▶ Blast and painting contractor yard work.
- ▶ Blast room applications with or without abrasive recovery systems.
- ▶ In situ blasting in shipyards and slipways.

Complementary Products



Blast Hoses



Electric Remote Conversion Kit



Safe-T-Pinch Valve



ATV Blast Nozzles



Titan II SAR



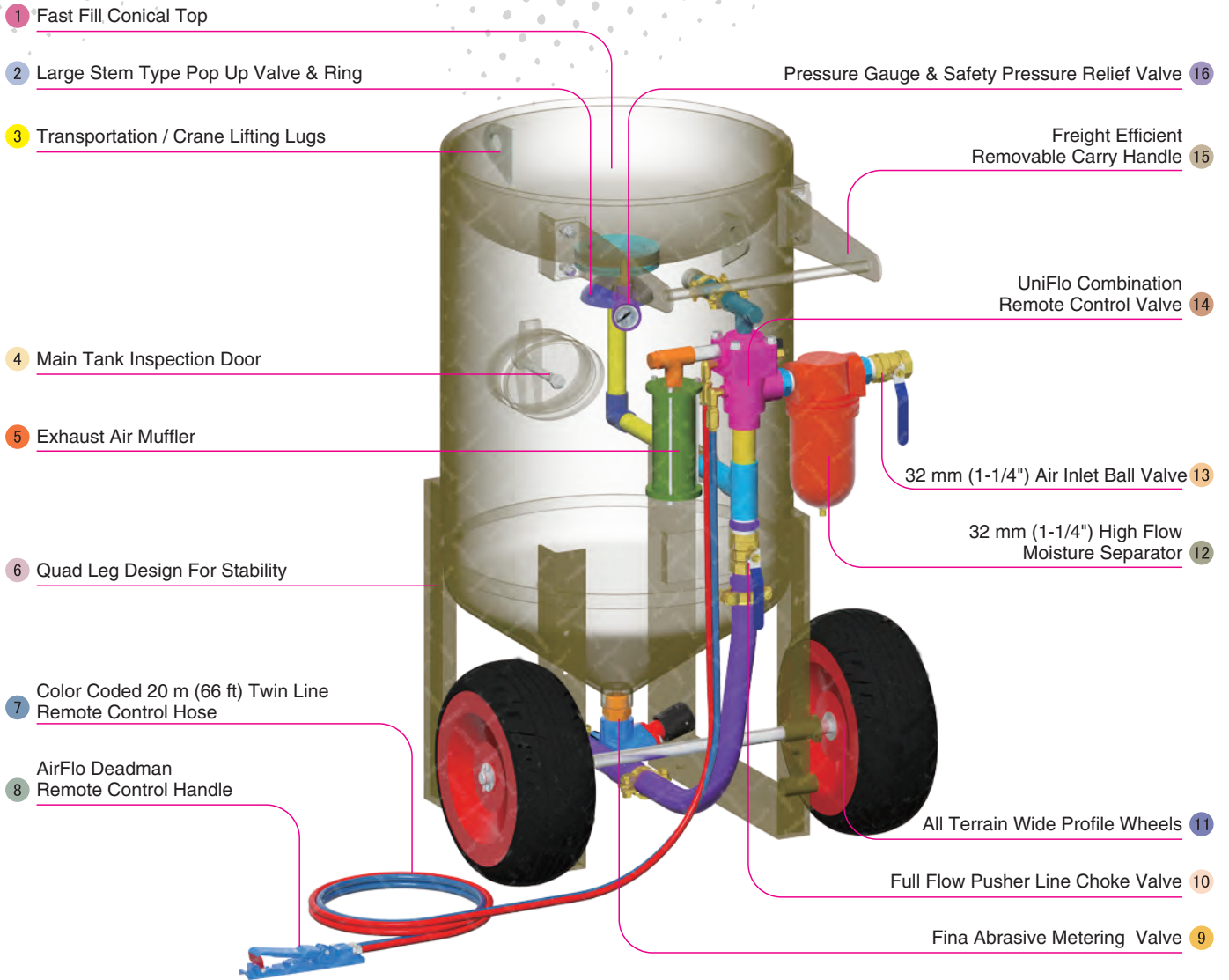
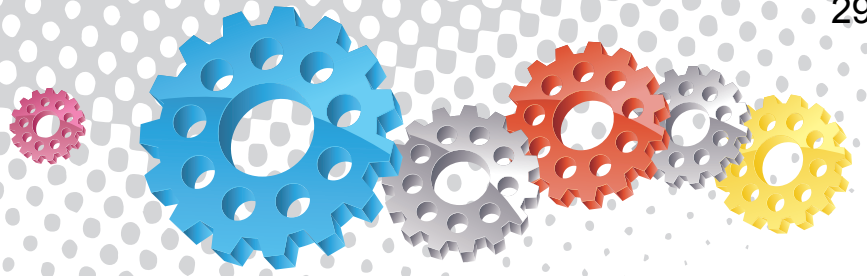
ProFlo Recycling System



VisiFlo Premium Airline Filter



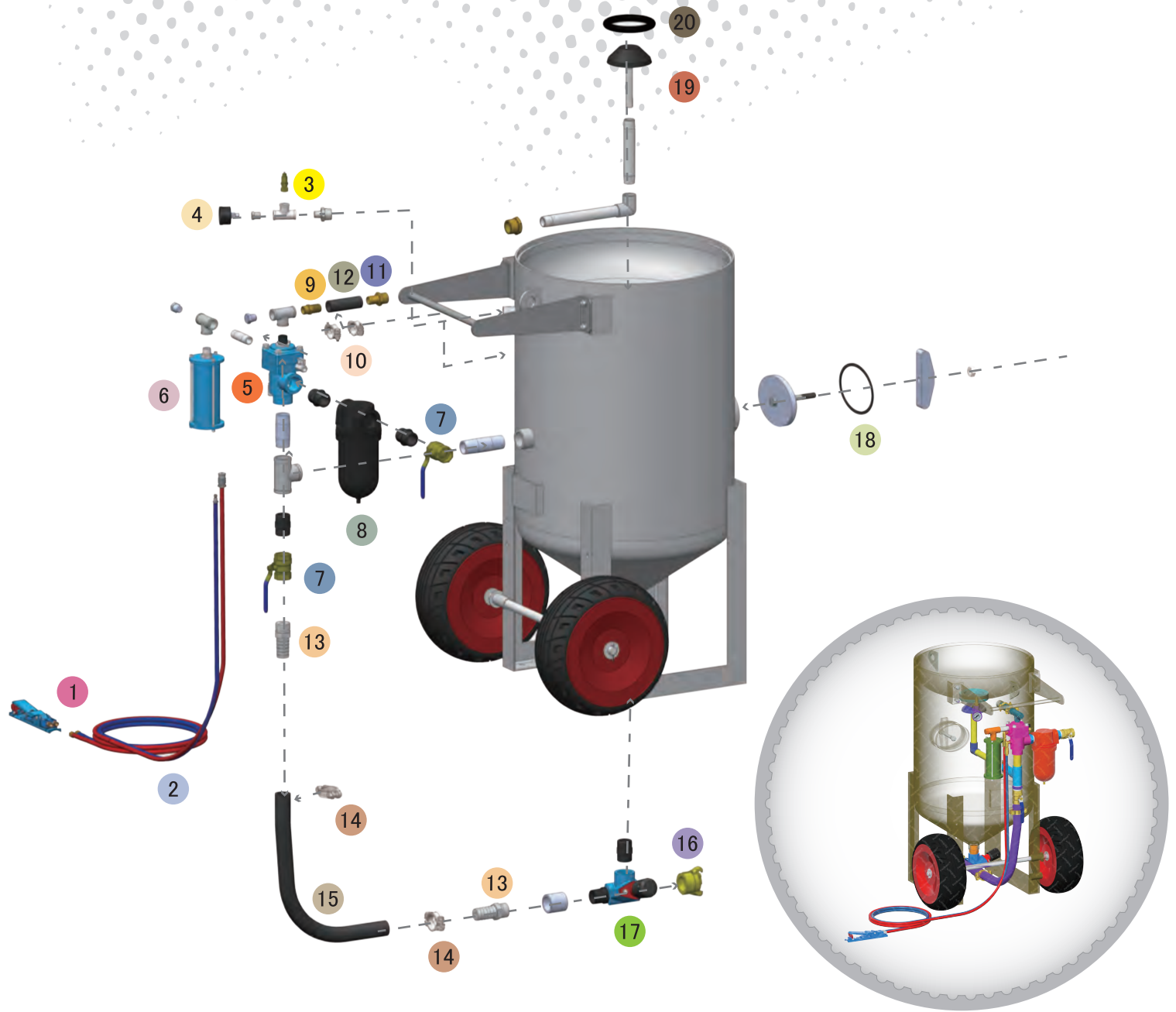
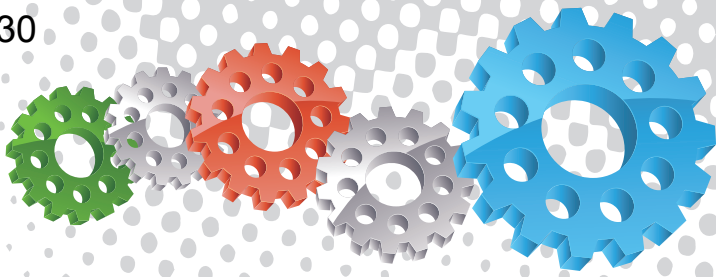
Airless Spray Pumps



Component Highlights



- | | | |
|---------------------------------------|--|--|
| 1 Fast Fill Conical Top | 7 Color Coded 20 m (66 ft) Twin Line Remote Control Hose | 13 32 mm (1-1/4") Air Inlet Ball Valve |
| 2 Large Stem Type Pop Up Valve & Ring | 8 AirFlo Deadman Remote Control Handle | 14 UniFlo Combination Remote Control Valve |
| 3 Transportation / Crane Lifting Lugs | 9 Fina Abrasive Metering Valve | 15 Freight Efficient Removable Carry Handle |
| 4 Main Tank Inspection Door | 10 Full Flow Pusher Line Choke Valve | 16 Pressure Gauge & Safety Pressure Relief Valve |
| 5 Exhaust Air Muffler | 11 All Terrain Wide Profile Wheels | |
| 6 Quad Leg Design For Stability | 12 32 mm (1-1/4") High Flow Moisture Separator | |



Assembly

Stock Code	Description	Dry Weight	Abrasive Capacity	Piping Size
BEP-PS-0054-00	BP600-1/AU/NZ UniFlo Fina AirFlo	155 kg (342 lbs)	200 litres (6 ft³)	32 mm (1-1/4")



Parts List



Description	Qty	Description	Qty	Description	Qty
1 AirFlo Pneumatic Control Handle	1	8 32 mm (1-1/4") Port Moisture Separator	1	15 32 mm (1-1/4") Air Supply Hose	0.75 m
2 20 m (66') Twinline Hose Assembly	1	9 Hose Barb	1	16 STC-1 Steel Threaded Pot Coupling	1
3 1/2" BSP - 125 PSI Pressure Relief Valve	1	10 Hose Clamp	2	17 Fina Valve 1-1/4"M x 1-1/4"M Assembly	1
4 6 mm (1/4") Pressure Gauge - Rear Entry	1	11 Hose Barb	1	18 Blast Pot-H/Hole 192 x 144 -Sealing Gasket	1
5 Uniflo Valve With Fittings - 90 Deg	1	12 25mm (1") Air Supply Hose	0.15 m	19 Pop Up Valve - Stem Type	1
6 Exhaust Muffler	1	13 KC Nipple	2	20 Pop Up Valve Seating Ring	1
7 32 mm (1-1/4") Ball Valve	2	14 Hose Clamp	2		



BP600-1/MY Blast Pot



Complementary Products



Blast Hoses



Safe-T-Pinch Valve



Spartan Blast Helmet



PBF II-1 Airline Filter



Electric Remote Conversion Kit



ATN Blast Nozzles



ProFlo Recycling System



Airless Spray Pumps



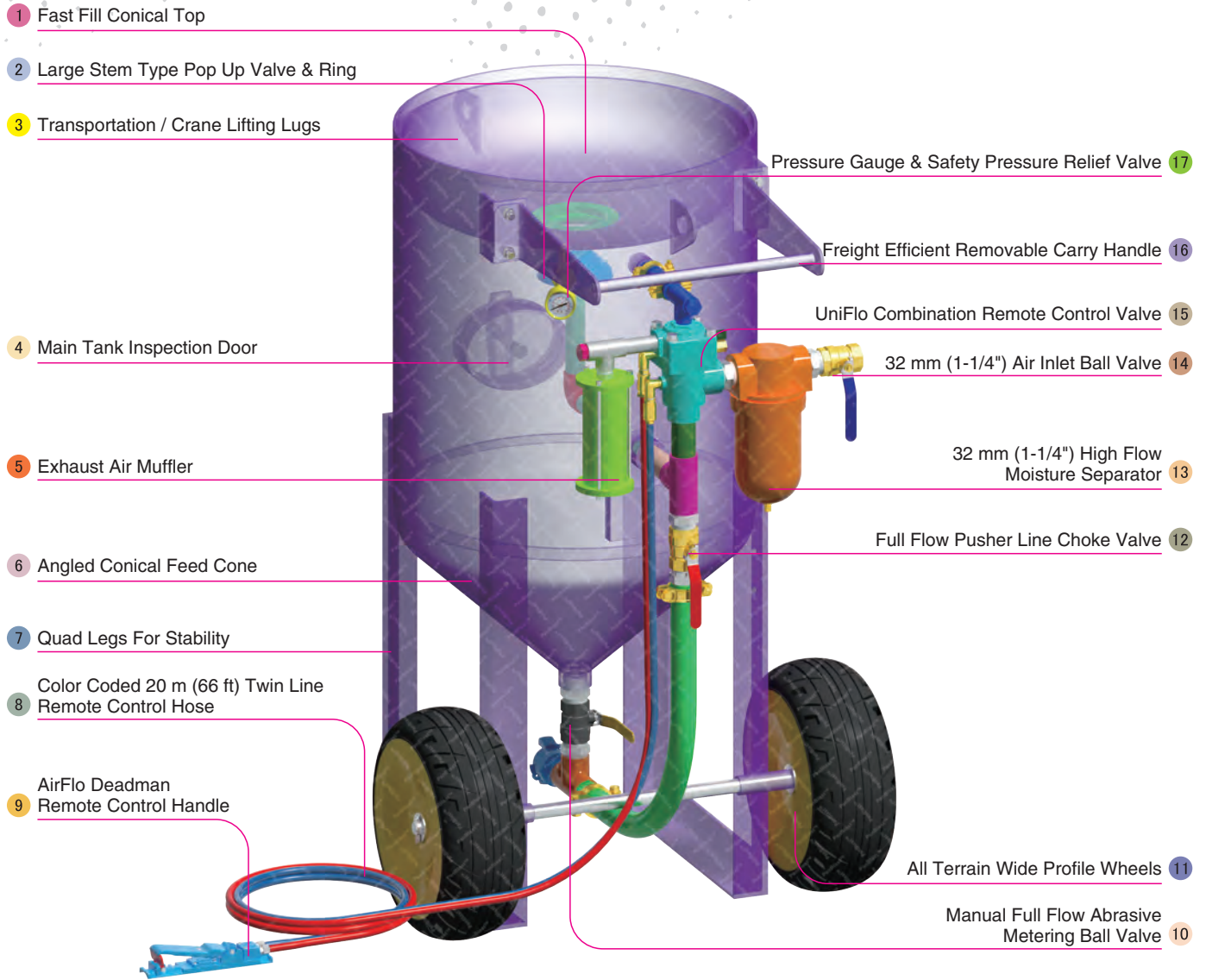
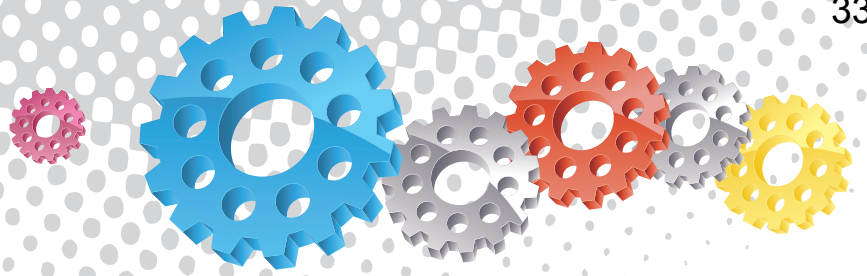
Product Features

PanBlast™ BP Series Blast Pots are available in multiple configurations and specifications to suit varying market requirements worldwide. The BP600-1 is a full-size, automatic blast pot, suitable for large-scale blasting operations.

- ▶ Designed and manufactured in accordance with international standards and requirements.
- ▶ Third party pressure vessel certificates available on request.
- ▶ UniFlo combination type remote control valve.
- ▶ AirFlo air-bleed type pneumatic deadman handle.
- ▶ Hardened carbon steel ball valve for use with expendable abrasives.
- ▶ Moisture trap, exhaust muffler and main air isolation valve standard.
- ▶ Wide, pneumatic wheels for increased maneuverability and stability.
- ▶ 200 litres (6 ft³) abrasive capacity, 125 psi pressure rating.
- ▶ 32 mm (1-1/4") fittings.

Common Applications

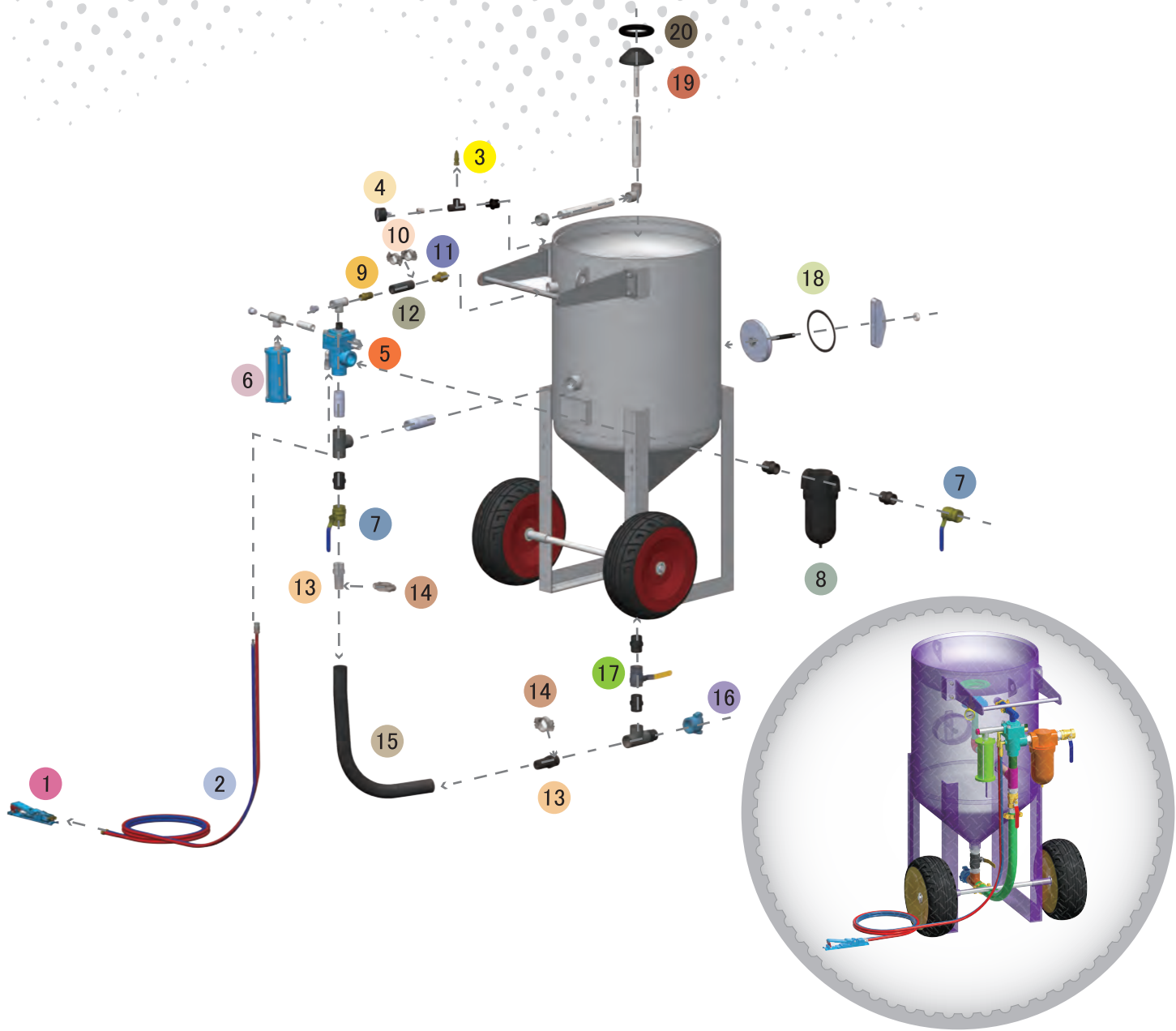
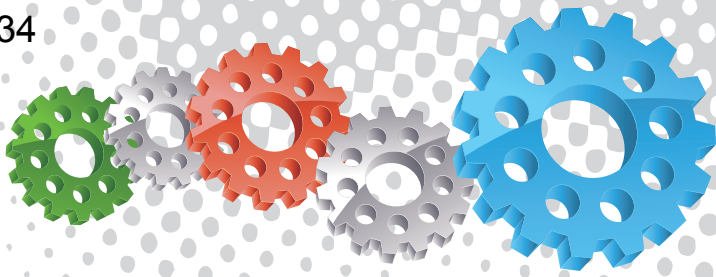
- ▶ On site industrial and commercial blasting.
- ▶ Blast and painting contractor yard work.
- ▶ Blast room applications with or without abrasive recovery systems.
- ▶ In situ blasting in shipyards and slipways.



Component Highlights

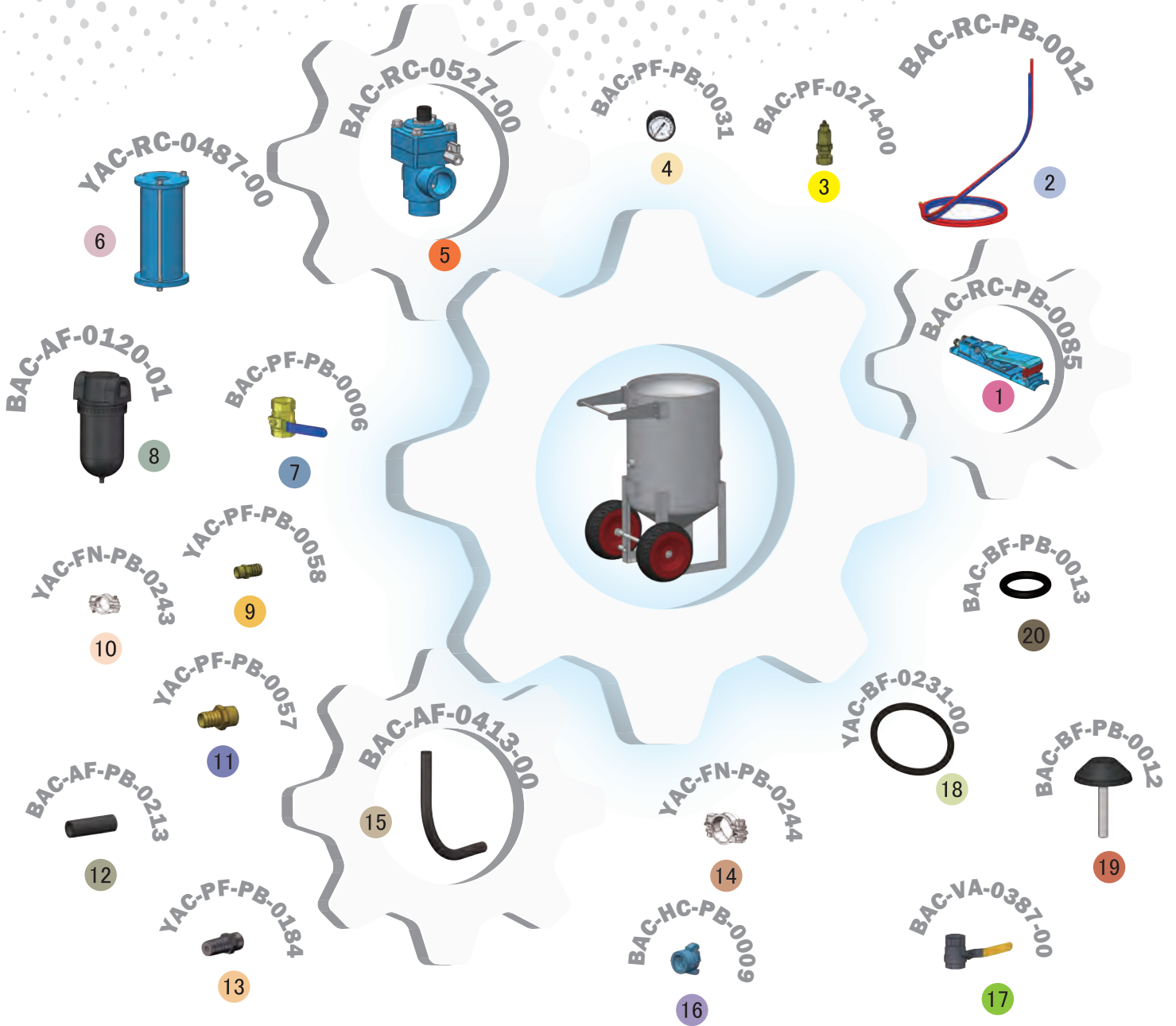


- | | | |
|---------------------------------------|--|--|
| 1 Fast Fill Conical Top | 7 Quad Legs For Stability | 13 32 mm (1-1/4") High Flow Moisture Separator |
| 2 Large Stem Type Pop Up Valve & Ring | 8 Color Coded 20 m (66 ft) Twin Line Remote Control Hose | 14 32 mm (1-1/4") Air Inlet Ball Valve |
| 3 Transportation / Crane Lifting Lugs | 9 AirFlo Deadman Remote Control Handle | 15 UniFlo Combination Remote Control Valve |
| 4 Main Tank Inspection Door | 10 Manual Full Flow Abrasive Metering Ball Valve | 16 Freight Efficient Removable Carry Handle |
| 5 Exhaust Air Muffler | 11 All Terrain Wide Profile Wheels | 17 Pressure Gauge & Safety Pressure Relief Valve |
| 6 Angled Conical Feed Cone | 12 Full Flow Pusher Line Choke Valve | |



Assembly

Stock Code	Description	Dry Weight	Abrasive Capacity	Piping Size
BEP-PS-0060-00	BP600-1/MY UniFlo Abra Ball. Vlv AirFlo	155 kg (342 lbs)	200 litres (6 ft ³)	32 mm (1-1/4")



Parts List



Description	Qty	Description	Qty	Description	Qty
1 AirFlo Pneumatic Control Handle	1	8 32 mm (1-1/4") Port Moisture Separator	1	15 32 mm (1-1/4") Air Supply Hose	0.85 m
2 20 m (66') Twinline Hose Assembly	1	9 Hose Barb	1	16 NTC-1 Nylon Threaded Pot Coupling	1
3 1/2" BSP - 125 PSI Pressure Relief Valve	1	10 Hose Clamp	2	17 1-1/4" Abrasive Ball Valve	1
4 6 mm (1/4") Pressure Gauge - Rear Entry	1	11 Hose Barb	1	18 Blast Pot-H/Hole 192 x 144 -Sealing Gasket	1
5 UniFlo Valve With Fittings - 90 Deg	1	12 25 mm (1") Air Supply Hose	0.15 m	19 Pop Up Valve - Stem Type	1
6 Exhaust Muffler	1	13 KC Nipple	2	20 Pop Up Valve Seating Ring	1
7 32 mm (1-1/4") Ball Valve	2	14 Hose Clamp	2		



BP600-1 Blast Pots



Product Features

PanBlast™ BP600-1 Blast Pots are available in multiple configurations and specifications to suit varying market requirements worldwide. The BP600-1 is a full-size, automatic blast pot, suitable for large-scale blasting operations.

- ▶ Designed and manufactured in accordance with international standards and requirements.
- ▶ Third party pressure vessel test certificates available on request.
- ▶ UniFlo combination type remote control valve.
- ▶ AirFlo air-bleed type pneumatic deadman handle.
- ▶ Fina II type abrasive control valve for precise metering and easy maintenance.
- ▶ Moisture trap, exhaust muffler and main air isolation valve standard.
- ▶ Wide, pneumatic wheels for increased maneuverability and stability.
- ▶ 200 litres (6 ft³) abrasive capacity, 125 or 150 psi pressure rating.
- ▶ 32 mm (1-1/4") fittings.

Common Applications

- ▶ On site industrial and commercial blasting.
- ▶ Blast and painting contractor yard work.
- ▶ Blast room applications with or without abrasive recovery systems.
- ▶ In situ blasting in shipyards and slipways.

Complementary Products



Blast Hoses



Titan II SAR



Couplings & Nozzle Holders



Whip Check Cables



ATN Blast Nozzles



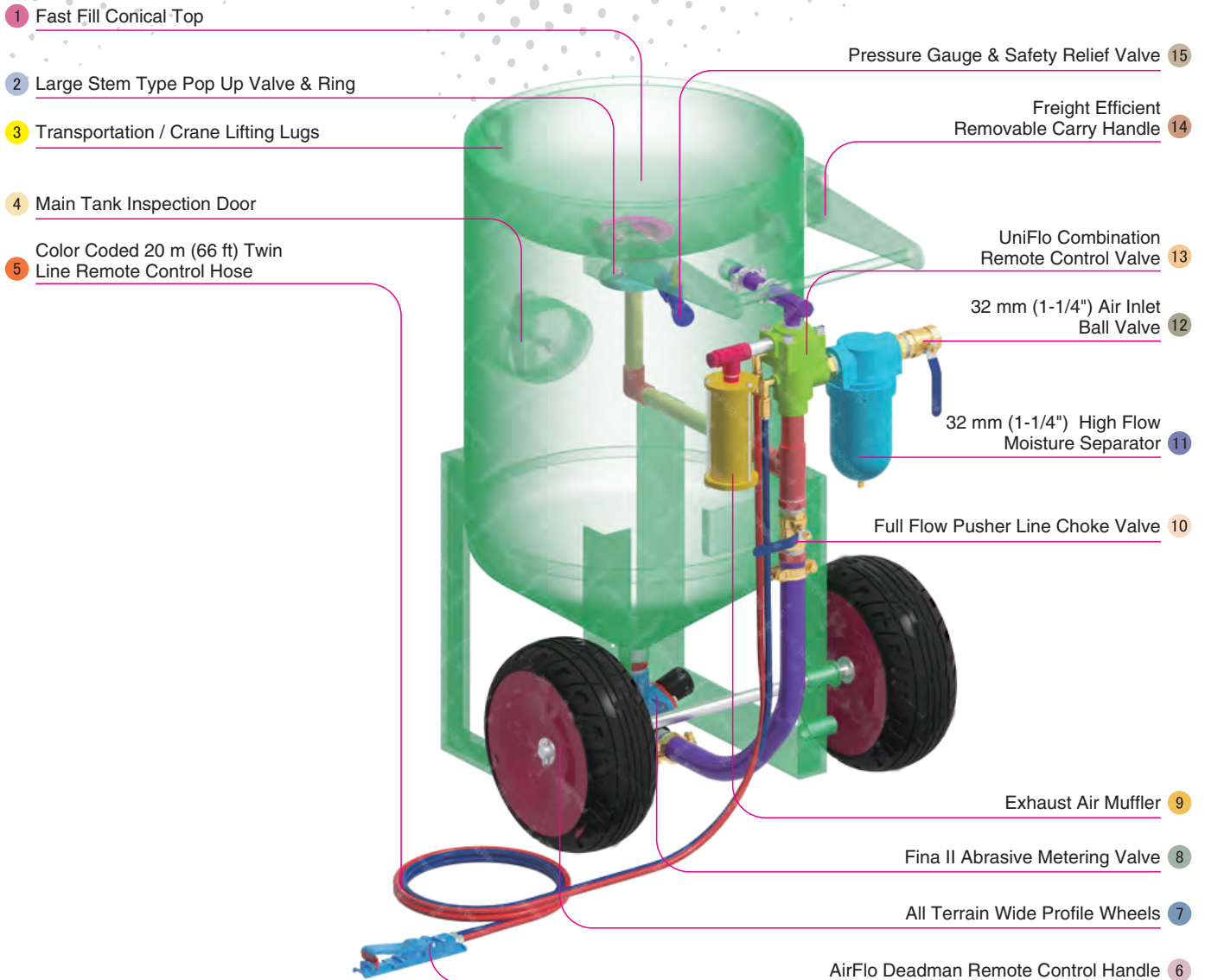
VisiFlo Premium Airline Filter



Electric Remote Systems



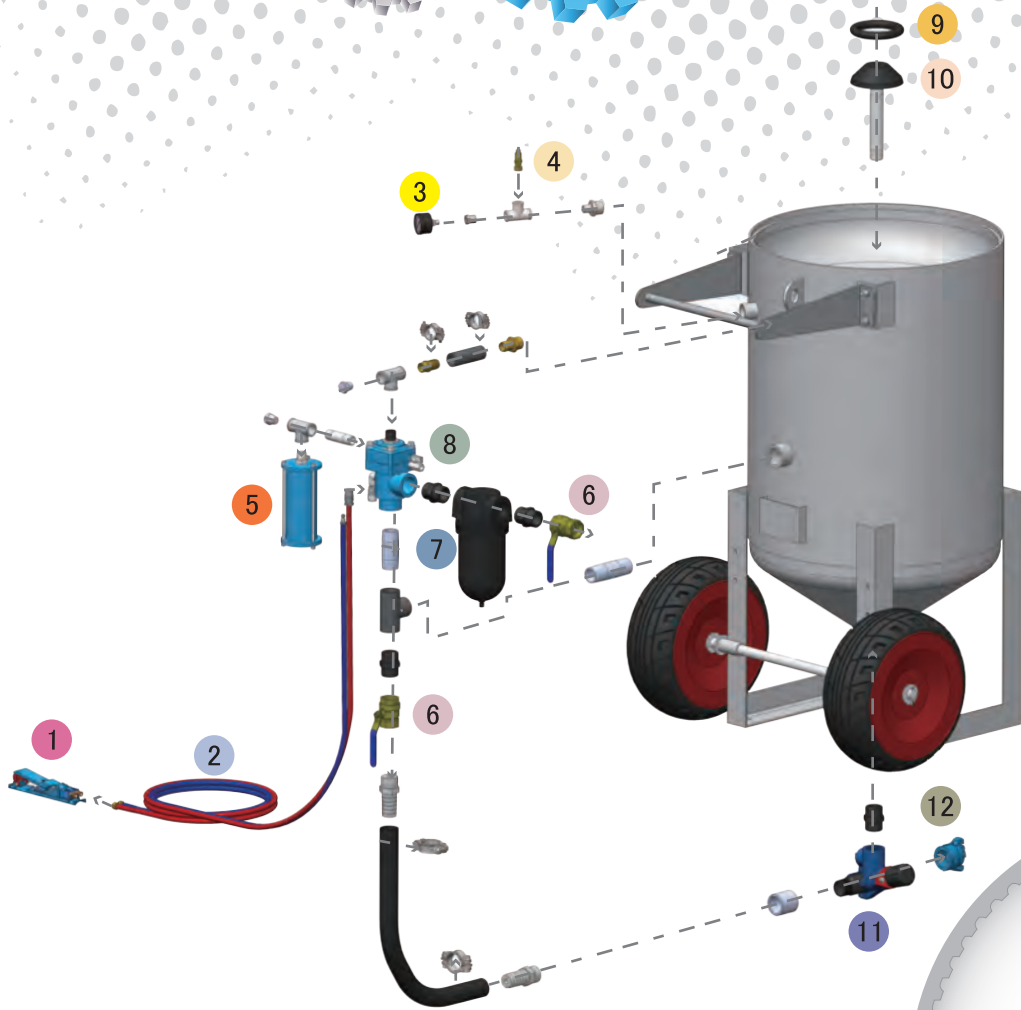
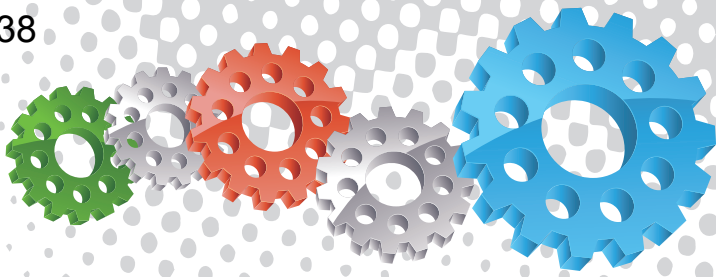
Blasting Suit & Gloves



Component Highlights



- | | | |
|--|--|--|
| 1 Fast Fill Conical Top | 6 AirFlo Deadman Remote Control Handle | 11 32 mm (1-1/4") High Flow Moisture Separator |
| 2 Large Stem Type Pop Up Valve & Ring | 7 All Terrain Wide Profile Wheels | 12 32 mm (1-1/4") Air Inlet Ball Valve |
| 3 Transportation / Crane Lifting Lugs | 8 Fina II Abrasive Metering Valve | 13 UniFlo Combination Remote Control Valve |
| 4 Main Tank Inspection Door | 9 Exhaust Air Muffler | 14 Freight Efficient Removable Carry Handle |
| 5 Color Coded 20 m (66 ft) Twin Line Remote Control Hose | 10 Full Flow Pusher Line Choke Valve | 15 Pressure Gauge & Safety Relief Valve |



Assemblies

Stock Code	Description	Dry Weight	Abrasive Capacity	Piping Size
BEP-PS-0055-00	BP600-1/AU/NZ Uniflo Fina II AirFlo	200 kg(441 lbs)	200 litres (6 ft³)	32 mm (1-1/4")
BEP-PS-0056-00	BP600-1/MY Uniflo Fina II AirFlo	200 kg(441 lbs)	200 litres (6 ft³)	32 mm (1-1/4")
BEP-PS-0057-00	BP600-1/SG Uniflo Fina II AirFlo	200 kg(441 lbs)	200 litres (6 ft³)	32 mm (1-1/4")
BEP-PS-0076-00	BP600-1/CE Uniflo Fina II AirFlo	200 kg(441 lbs)	200 litres (6 ft³)	32 mm (1-1/4")



Parts List



Description	Qty	Description	Qty	Description	Qty
1 AirFlo Pneumatic Control Handle	1	5 Exhaust Muffler	1	9 Pop Up Valve Seating Ring	1
2 20 m (66') Twinline Hose Assembly	1	6 32 mm (1-1/4") Ball Valve	2	10 Pop Up Valve - Stem Type	1
3 6 mm (1/4") Pressure Gauge - Rear Entry	1	7 32 mm (1-1/4") Port Moisture Separator	1	11 Fina II Valve 1-1/4"M X 1-1/4"M	1
4 1/2" BSP - 125 PSI Pressure Relief Valve	1	8 UniFlo Valve With Fittings - 90 Deg	1	12 STC-1 Steel Threaded Pot Coupling or 1 NTC-1 Nylon Threaded Pot Coupling	1



BP600-2/AU/MY/NZ Blast Pots



Product Features

PanBlast™ BP Series Blast Pots are available in multiple configurations and specifications to suit varying market requirements worldwide. The BP600-2 is a full-size, automatic blast pot, suitable for large-scale blasting operations.

- ▶ Designed and manufactured in accordance with international standards and requirements.
- ▶ Third party pressure vessel test certificates available on request.
- ▶ Separate Tandem air inlet and exhaust valves, for fast and efficient operation.
- ▶ AirStop non-bleed type pneumatic deadman handle
- ▶ Corsa II type automatic pressure-hold abrasive control valve for precise metering and easy maintenance.
- ▶ Moisture trap, exhaust muffler and main air isolation valve standard.
- ▶ Wide, pneumatic wheels for increased maneuverability and stability.
- ▶ 200 litres (6 ft³) abrasive capacity, 125 or 150 psi pressure rating.
- ▶ 32 mm (1-1/4") fittings.

Common Applications

- ▶ On site industrial and commercial blasting.
- ▶ Blast and painting contractor yard work.
- ▶ Blast room applications with or without abrasive recovery systems.
- ▶ In situ blasting in shipyards and slipways.

Complementary Products



Blast Hoses



Titan II SAR



Couplings & Nozzle Holders



Whip Check Cables



ATN Blast Nozzles



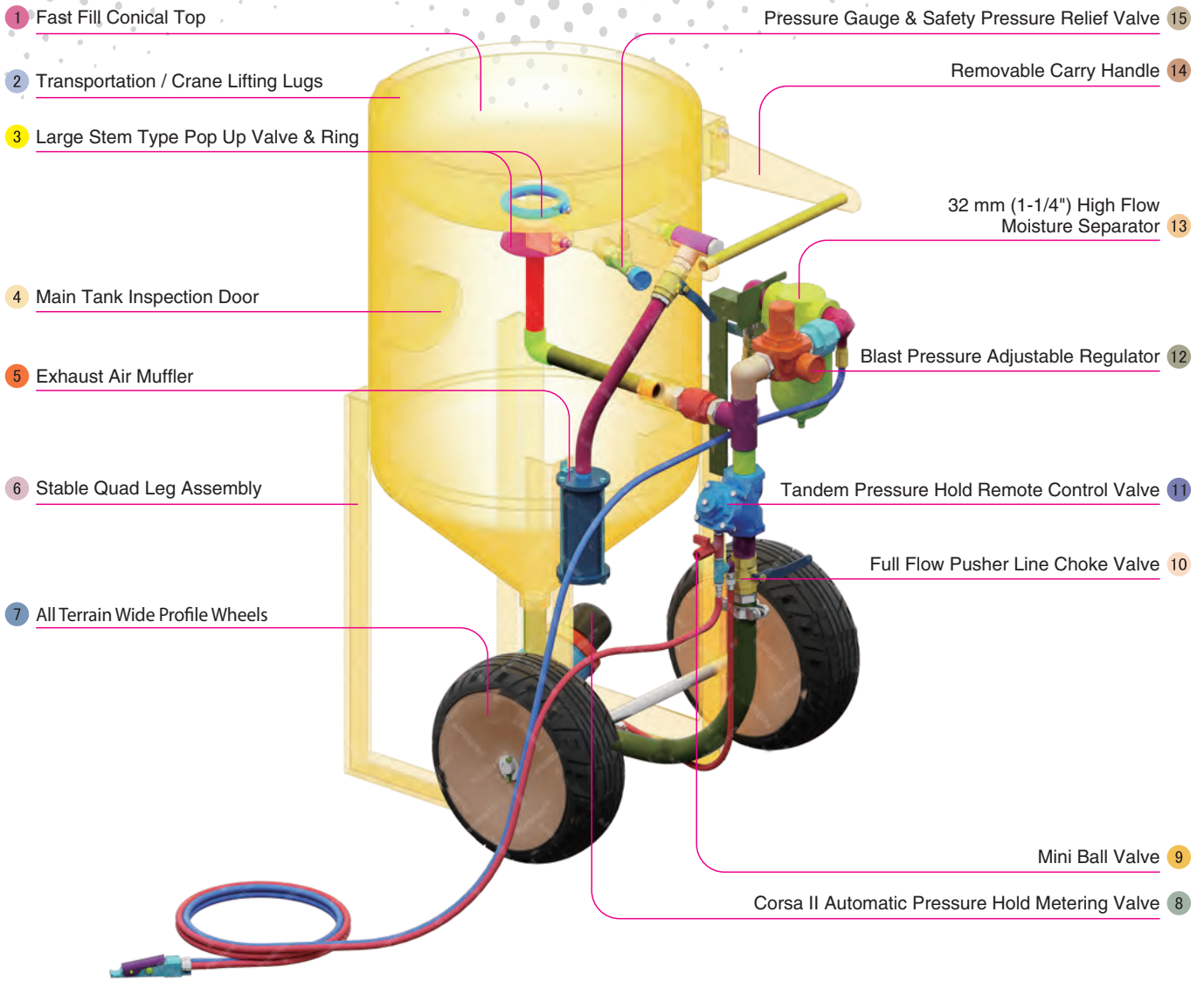
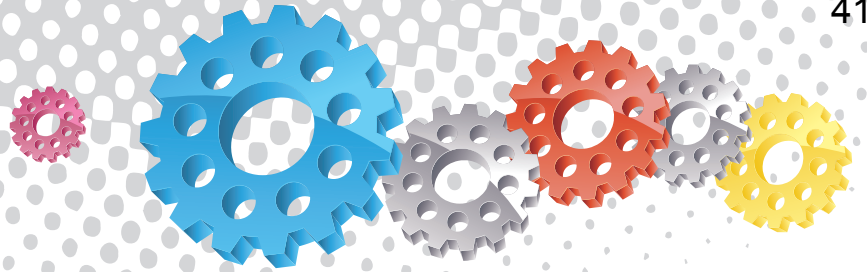
VisiFlo Premium Airline Filter



Electric Remote Systems



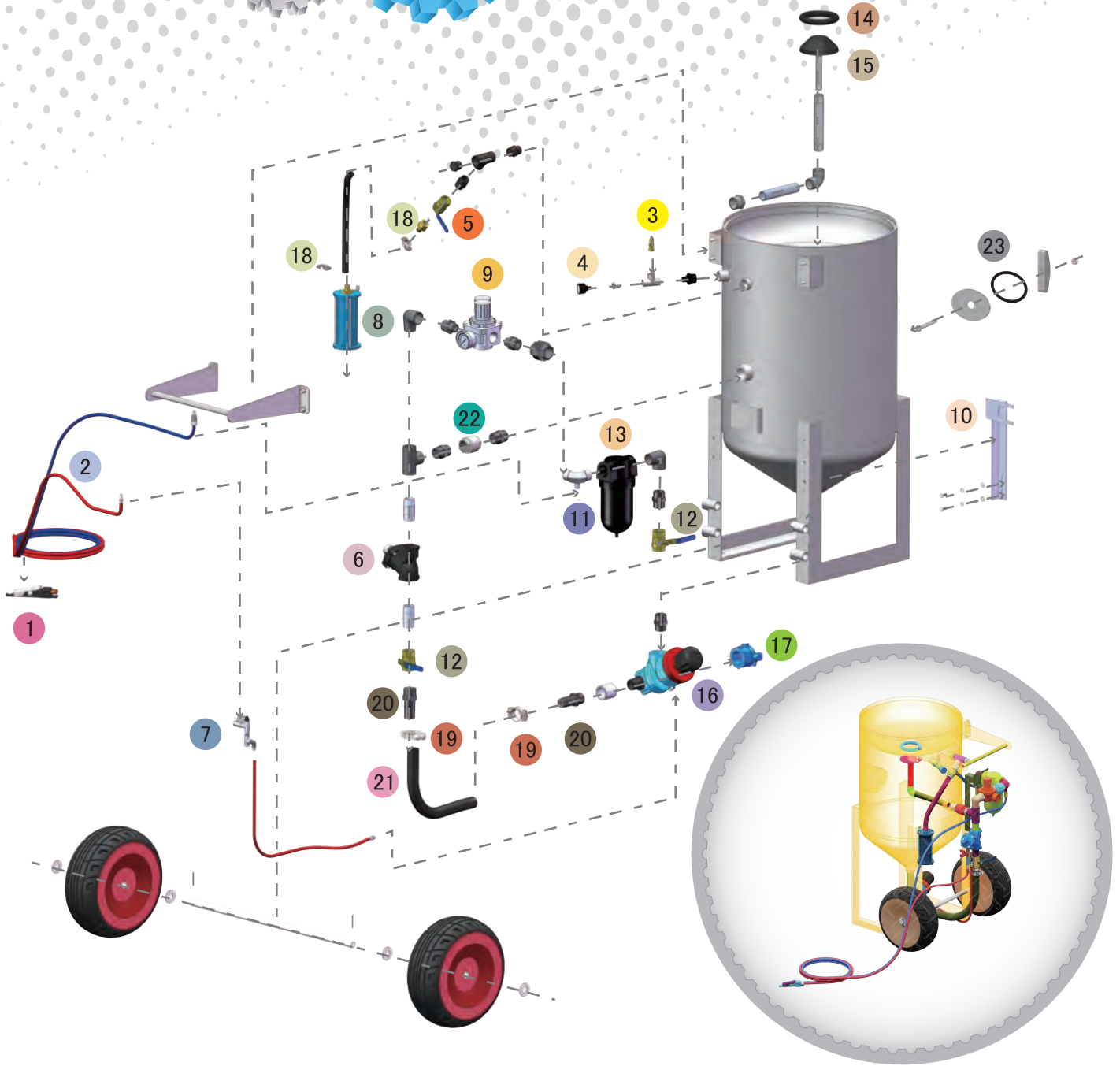
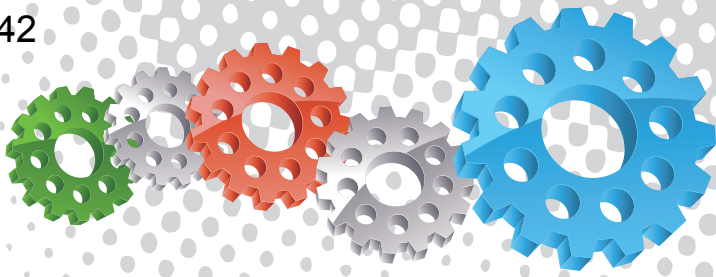
Blasting Suit & Gloves



Component Highlights



- 1 Fast Fill Conical Top
- 2 Transportation / Crane Lifting Lugs
- 3 Large Stem Type Pop Up Valve & Ring
- 4 Main Tank Inspection Door
- 5 Exhaust Air Muffler
- 6 Stable Quad Leg Assembly
- 7 All Terrain Wide Profile Wheels
- 8 Corsa II Automatic Pressure Hold Metering Valve
- 9 Mini Ball Valve
- 10 Full Flow Pusher Line Choke Valve
- 11 Tandem Pressure Hold Remote Control Valve
- 12 Blast Pressure Adjustable Regulator
- 13 32 mm (1-1/4") High Flow Moisture Separator
- 14 Removable Carry Handle
- 15 Pressure Gauge & Safety Pressure Relief Valve



Assemblies

Stock Code	Description	Dry Weight	Abrasive Capacity	Piping Size
BEP-PS-PB-0008	BP600-2/AU/NZ Tandem Corsa II-US AirStop	205 kg (452 lbs)	200 litres (6 ft³)	32 mm (1-1/4")
BEP-PS-0072-00	BP600-2/MY Tandem Corsa II-US AirStop	205 kg (452 lbs)	200 litres (6 ft³)	32 mm (1-1/4")



Parts List



Description	Qty	Description	Qty	Description	Qty
1 AirStop Pneumatic Control Handle	1	9 25 mm (1") Pressure Regulator with Gauge	1	17 NTC-1 Nylon Threaded Pot Coupling	1
2 20 m (66') Twinline Hose Assembly	1	10 Support Bracket	1	18 Hose Clamp	2
3 1/2" BSP - 125 PSI Pressure Relief Valve	1	11 Elbow	1	19 Hose Clamp	2
4 6 mm (1/4") Pressure Gauge - Rear Entry	1	12 32 mm (1-1/4") Ball Valve	2	20 KC Nipple	2
5 25 mm (1") Ball Valve	1	13 32 mm (1-1/4") Port Moisture Separator	1	21 32 mm (1-1/4") Air Supply Hose	0.55 m
6 1-1/4" Tandem NPT Valve Assembly	1	14 Pop Up Valve Seating Ring	1	22 32 mm (1-1/4") Non Return Valve	1
7 Mini Ball Valve	1	15 Pop Up Valve - Stem Type	1	23 Blast Pot-H/Hole 192 x 144-Sealing Gasket	1
8 Exhaust Muffler	1	16 Corsa II 1-1/4" With Urethane Sleeve	1		



BP800-1/BS Blast Pot



Product Features

PanBlast™ BP Series Blast Pots are available in multiple configurations and specifications to suit varying market requirements worldwide. The BP800-1 is an ultra-size, automatic blast pot, suitable for large-scale blasting operations.

- ▶ UniFlo combination type remote control valve.
- ▶ AirFlo air-bleed type pneumatic deadman handle.
- ▶ Fina II type abrasive control valve for precise metering and easy maintenance.
- ▶ Moisture trap, exhaust muffler and main air isolation valve standard.
- ▶ 300 litres (10.6 ft³) abrasive capacity, 110psi pressure rating.
- ▶ 32mm (1-1/4") fittings.

Common Applications

- ▶ On site industrial and commercial blasting.
- ▶ Blast and painting contractor yard work.
- ▶ Blast room applications with or without abrasive recovery systems.
- ▶ In situ blasting in shipyards and slipways.

Complementary Products



Blast Hoses



Galaxy Blast Helmet



Couplings & Nozzle Holders



Whip Check Cables



ATN Blast Nozzles



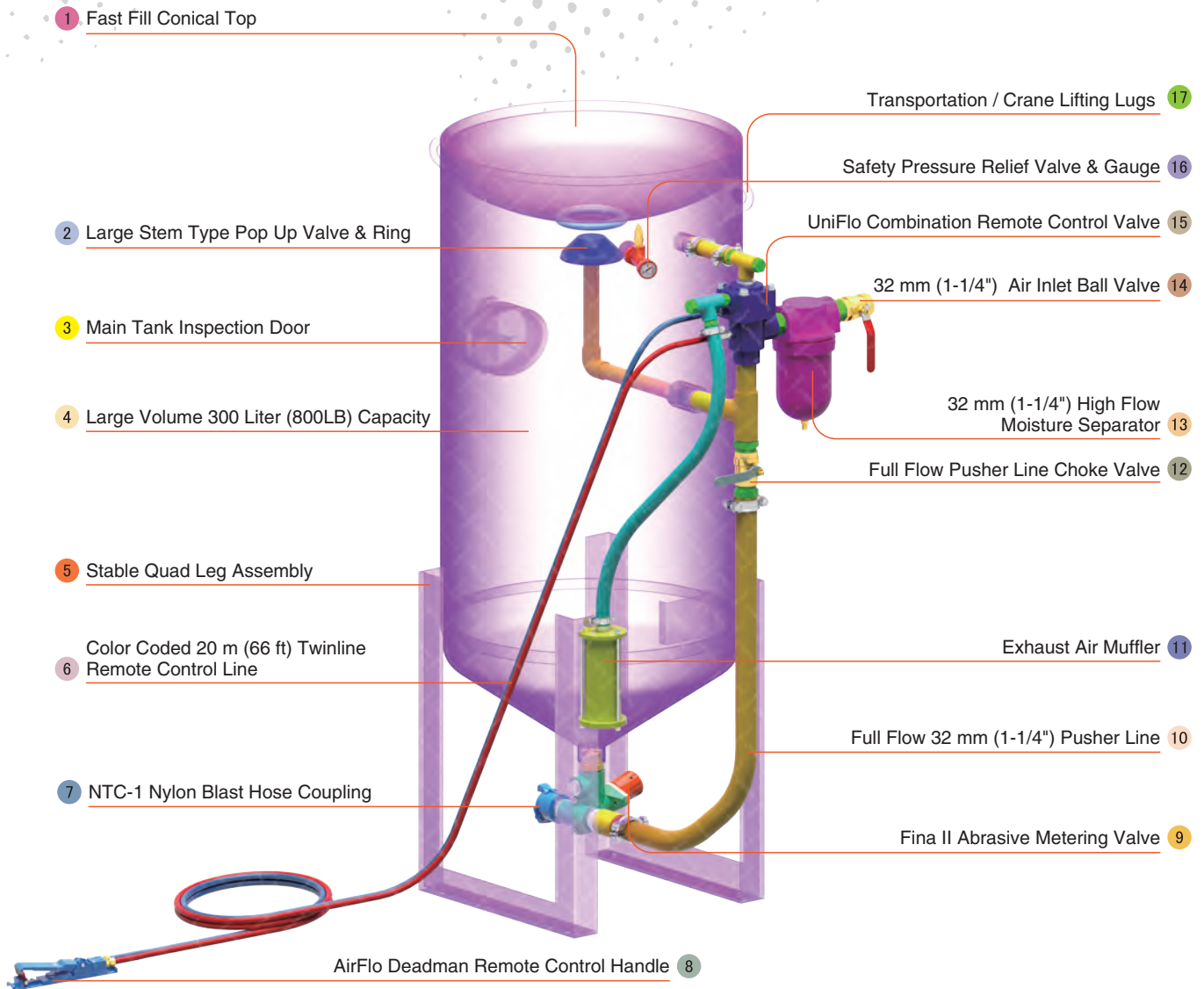
PBF II-1 Airline Filter



Electric Remote Systems



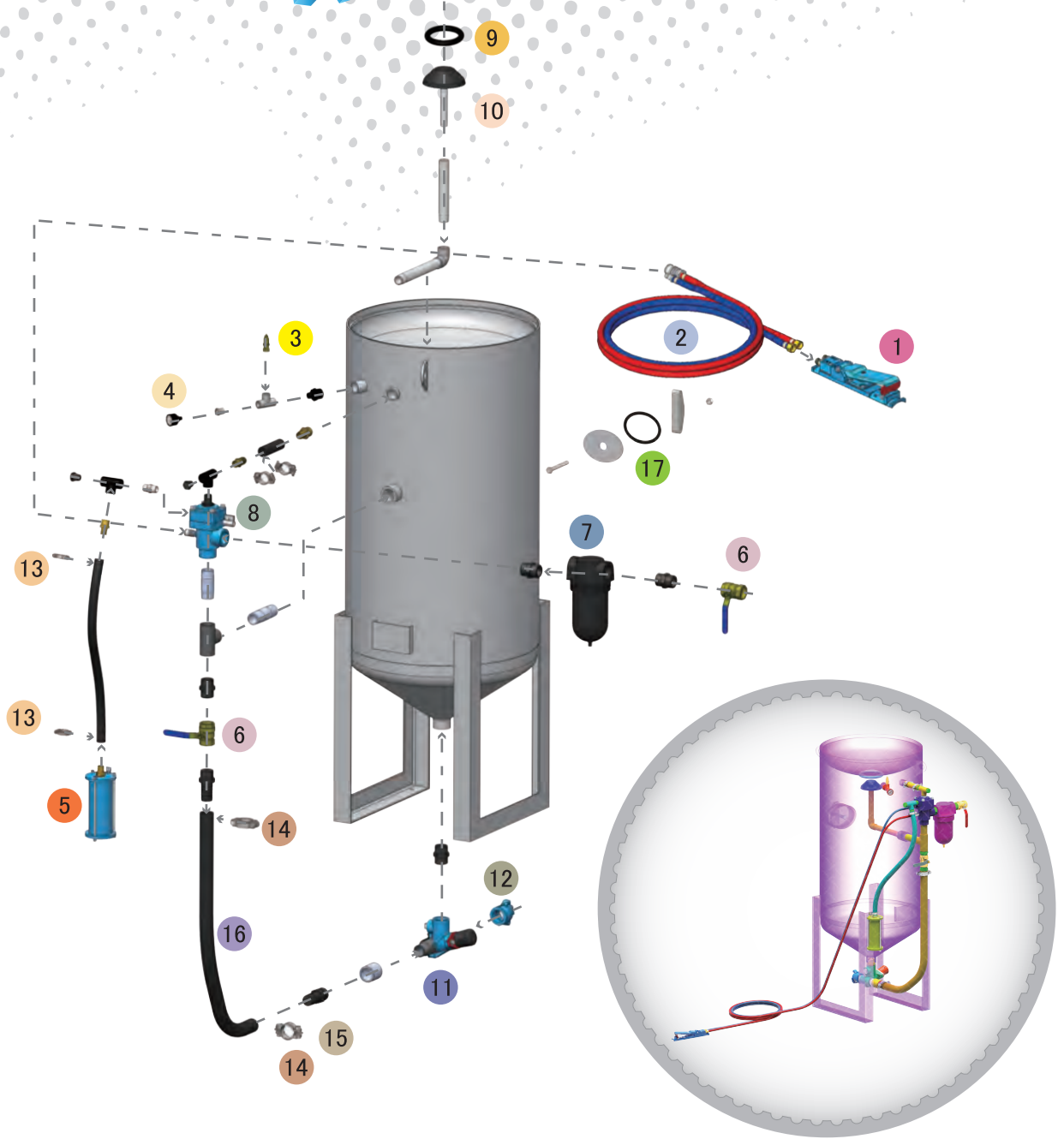
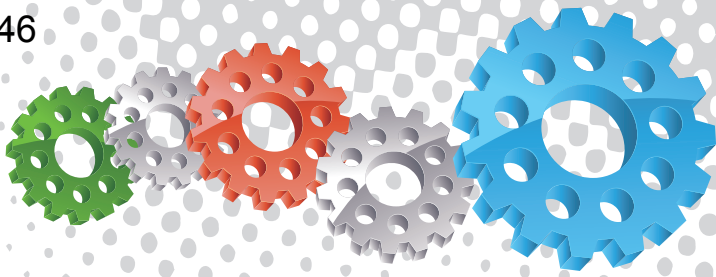
Blasting Suit & Gloves



Component Highlights



- | | | |
|---|---|--|
| 1 Fast Fill Conical Top | 7 NTC-1 Nylon Blast Hose Coupling | 13 32 mm (1-1/4") High Flow Moisture Separator |
| 2 Large Stem Type Pop Up Valve & Ring | 8 AirFlo Deadman Remote Control Handle | 14 32 mm (1-1/4") Air Inlet Ball Valve |
| 3 Main Tank Inspection Door | 9 Fina II Abrasive Metering Valve | 15 UniFlo Combination Remote Control Valve |
| 4 Large Volume 300 Liter (800LB) Capacity | 10 Full Flow 32 mm (1-1/4") Pusher Line | 16 Safety Pressure Relief Valve & Gauge |
| 5 Stable Quad Leg Assembly | 11 Exhaust Air Muffler | 17 Transportation / Crane Lifting Lugs |
| 6 Color Coded 20 m (66 ft) Twinline Remote Control Line | 12 Full Flow Pusher Line Choke Valve | |



Assembly

Stock Code	Description	Dry Weight	Abrasive Capacity	Piping Size
BEP-PS-0062-00	BP800-1/BS UniFlo Fina II AirFlo 110PSI	210 kg (463 lbs)	300 litres (10.6 ft³)	32 mm (1-1/4")



Parts List



Description	Qty	Description	Qty	Description	Qty
1 AirFlo Pneumatic Control Handle	1	7 32 mm (1-1/4") Port Moisture Separator	1	13 Hose Clamp	2
2 20 m (66') Twinline Hose Assembly	1	8 UniFlo Valve Assembly With Fittings	1	14 Hose Clamp	2
3 1/2" BSP - 125 PSI Pressure Relief Valve	1	9 Pop Up Valve Seating Ring	1	15 KC Nipple	2
4 6 mm (1/4") Pressure Gauge - Rear Entry	1	10 Pop Up Valve - Stem Type	1	16 32mm (1-1/4") Air Supply Hose	1.05 m
5 Exhaust Muffler	1	11 Fina II Valve 1-1/4"M x 1-1/4"M	1	17 Blast Pot-H/Hole 192x144-Sealing Gasket	1
6 32 mm (1-1/4") Ball Valve	2	12 NTC-1 Nylon Threaded Pot Coupling	1		



BP800-4/BS Blast Pot



Product Features

PanBlast™ BP Series Blast Pots are available in multiple configurations and specifications to suit varying market requirements worldwide. The BP800-4 is an ultra-size, automatic blast pot, suitable for large-scale blasting operations.

- ▶ Designed and manufactured in accordance with international standards and requirements.
- ▶ UniFlo combination type remote control valve.
- ▶ ERC1 electric deadman handle system for extended blasting hose length.
- ▶ Fina II type abrasive control valve for precise metering and easy maintenance.
- ▶ Moisture trap, exhaust muffler and main air isolation valve standard.
- ▶ 300 litres (10.6 ft³) abrasive capacity, 110psi pressure rating.
- ▶ 32 mm (1-1/4") fittings.

Common Applications

- ▶ On site industrial and commercial blasting.
- ▶ Blast and painting contractor yard work.
- ▶ Blast room applications with or without abrasive recovery systems.
- ▶ In situ blasting in shipyards and slipways.

Complementary Products



Blast Hoses



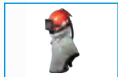
QuikStop IIS Electric Handle



Safe-T-Pinch Valve



ABN Blast Nozzles



Cosmo SAR



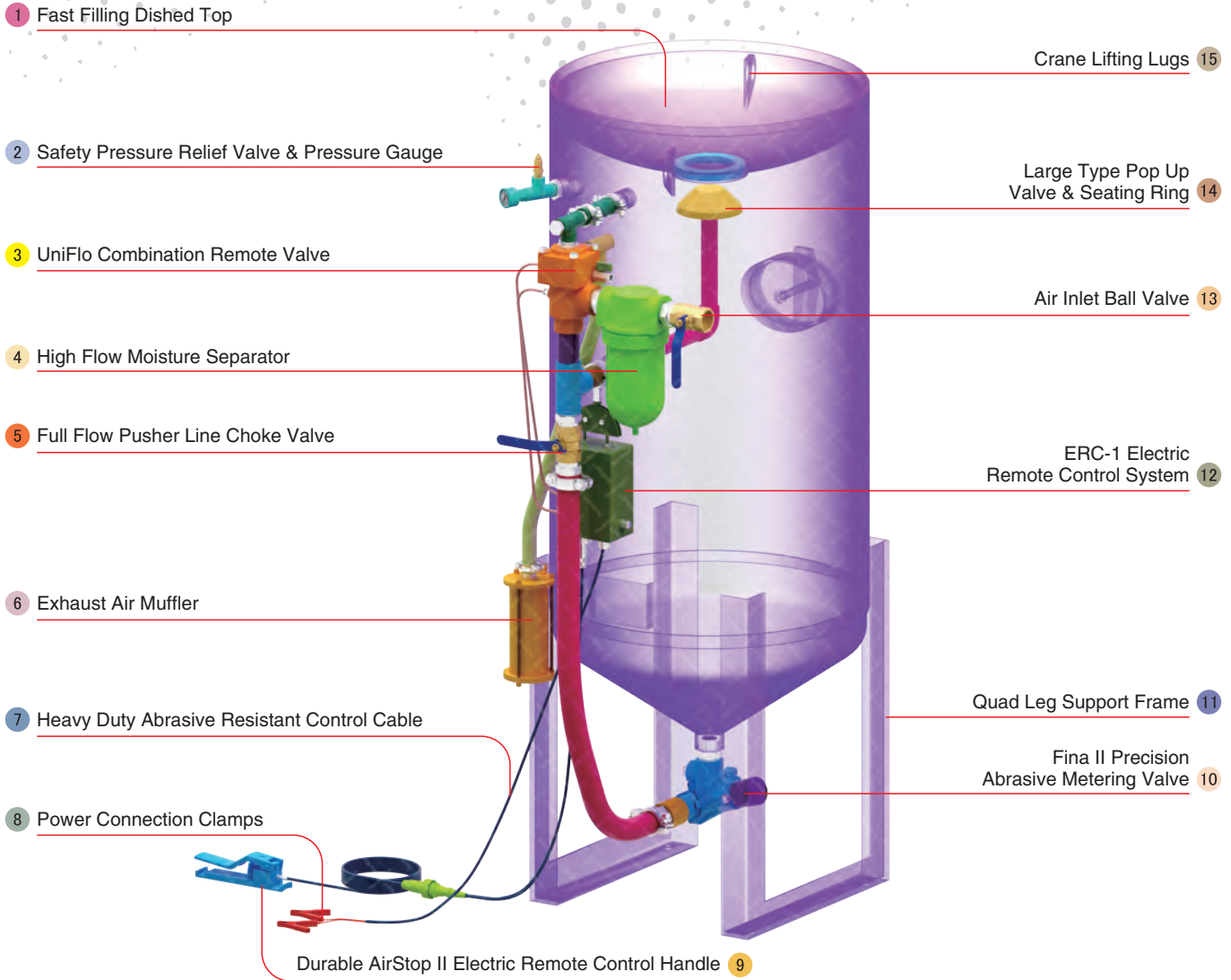
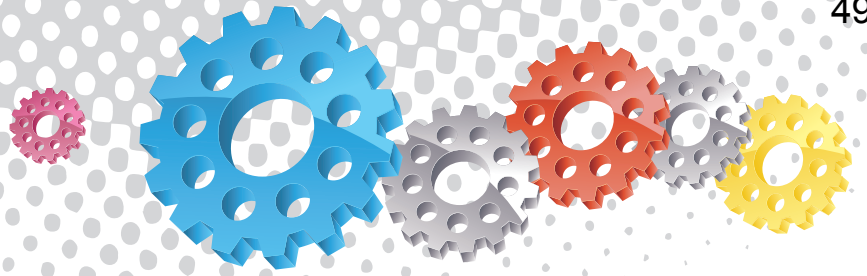
ProFlo Recycling System



VisiFlo Premium Filter



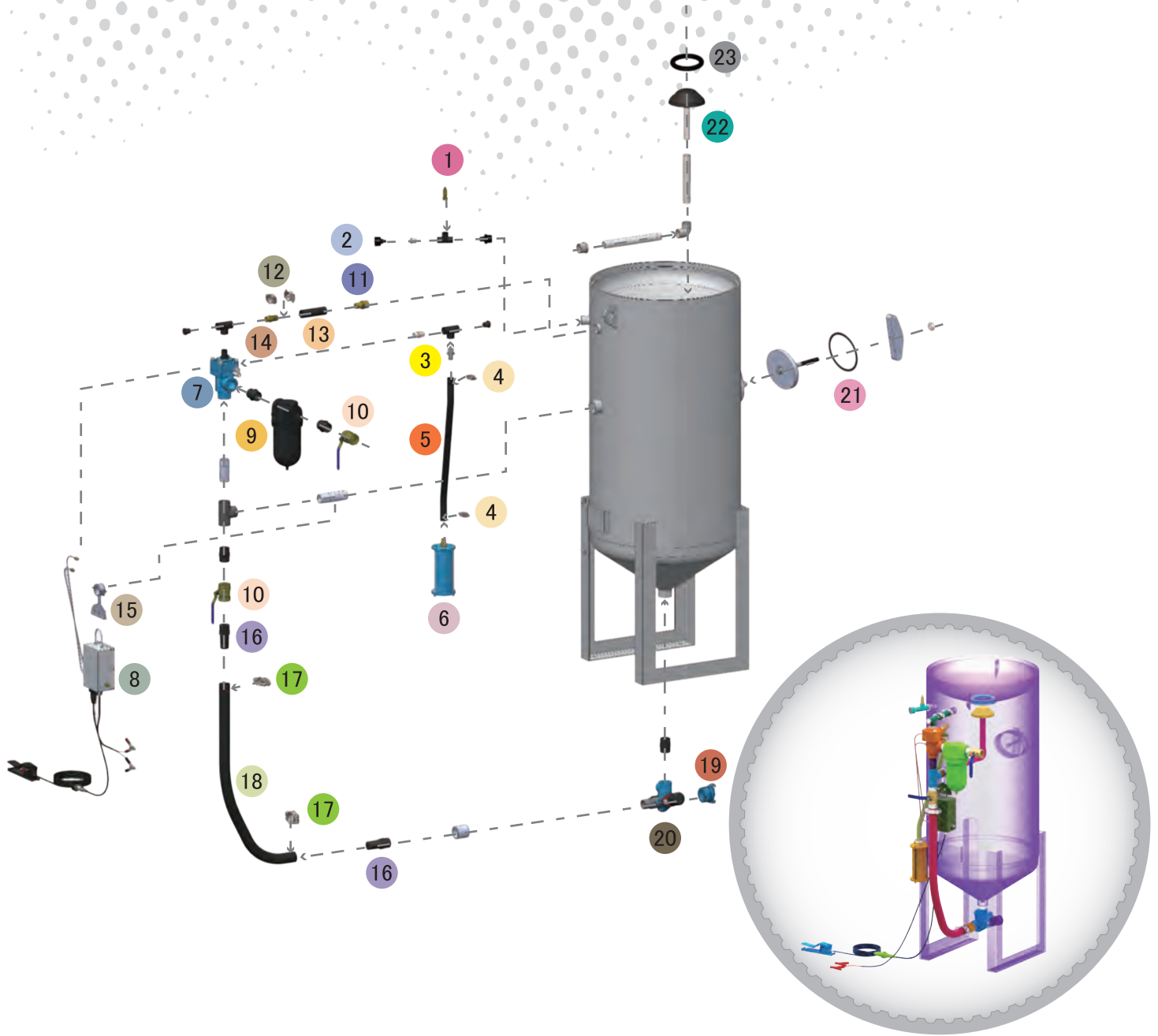
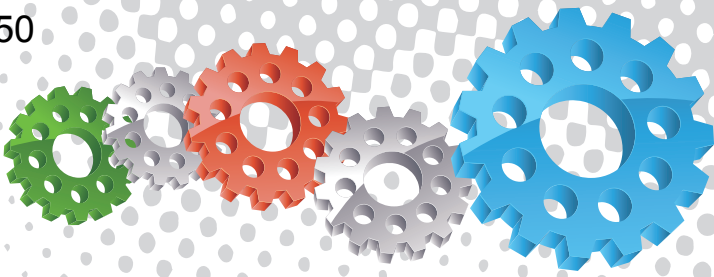
Airless Spray Pumps



Component Highlights



- | | | |
|---|---|---|
| 1 Fast Filling Dished Top | 6 Exhaust Air Muffler | 11 Quad Leg Support Frame |
| 2 Safety Pressure Relief Valve & Pressure Gauge | 7 Heavy Duty Abrasive Resistant Control Cable | 12 ERC-1 Electric Remote Control System |
| 3 UniFlo Combination Remote Valve | 8 Power Connection Clamps | 13 Air Inlet Ball Valve |
| 4 High Flow Moisture Separator | 9 Durable AirStop II Electric Remote Control Handle | 14 Large Type Pop Up Valve & Seating Ring |
| 5 Full Flow Pusher Line Choke Valve | 10 Fina II Precision Abrasive Metering Valve | 15 Crane Lifting Lugs |



Assembly

Stock Code	Description	Dry Weight	Abrasive Capacity	Piping Size
BEP-PS-0081-00	BP800-4/BS UniFlo Fina-II ERC1 110PSI	210 kg (463 lbs)	300 litres (10.6 ft³)	32 mm (1-1/4")



Parts List



Description	Qty	Description	Qty	Description	Qty
1 1/2" BSP - 125 PSI Pressure Relief Valve	1	9 32 mm (1-1/4") Port Moisture Separator	1	17 Hose Clamp	2
2 6 mm (1/4") Pressure Gauge - Rear Entry	1	10 32 mm (1-1/4") Ball Valve	2	18 32 mm (1-1/4") Air Supply Hose	1.05 m
3 KC Nipple	1	11 Hose Barb	1	19 NTC-1 Nylon Threaded Pot Coupling	1
4 Hose Clamp	2	12 Hose Clamp	2	20 Fina II Valve 1-1/4"M x 1-1/4"M	1
5 19 mm (3/4") Air Supply Hose	0.8 m	13 25 mm (1") Air Supply Hose	0.15 m	21 Blast Pot-H/Hole 192 x 144 - Sealing Gasket	1
6 Exhaust Muffler	1	14 Hose Barb	1	22 Pop Up Valve - Stem Type	1
7 UniFlo Remote Control Valve	1	15 ERC MTG Bracket	1	23 Pop Up Valve Seating Ring	1
8 Electric Remote Conversion Kit - 60 m	1	16 KC Nipple	2		

Архангельск (8182)63-90-72
Астана (7172)727-132
Астрахань (8512)99-46-04
Барнаул (3852)73-04-60
Белгород (4722)40-23-64
Брянск (4832)59-03-52
Владивосток (423)249-28-31
Волгоград (844)278-03-48
Вологда (8172)26-41-59
Воронеж (473)204-51-73
Екатеринбург (343)384-55-89
Иваново (4932)77-34-06

Ижевск (3412)26-03-58
Иркутск (395)279-98-46
Казань (843)206-01-48
Калининград (4012)72-03-81
Калуга (4842)92-23-67
Кемерово (3842)65-04-62
Киров (8332)68-02-04
Краснодар (861)203-40-90
Красноярск (391)204-63-61
Курск (4712)77-13-04
Липецк (4742)52-20-81

Киргизия (996)312-96-26-47

Магнитогорск (3519)55-03-13
Москва (495)268-04-70
Мурманск (8152)59-64-93
Набережные Челны (8552)20-53-41
Нижний Новгород (831)429-08-12
Новокузнецк (3843)20-46-81
Новосибирск (383)227-86-73
Омск (3812)21-46-40
Орел (4862)44-53-42
Оренбург (3532)37-68-04
Пенза (8412)22-31-16

Россия (495)268-04-70

Пермь (342)205-81-47
Ростов-на-Дону (863)308-18-15
Рязань (4912)46-61-64
Самара (846)206-03-16
Санкт-Петербург (812)309-46-40
Саратов (845)249-38-78
Севастополь (8692)22-31-93
Симферополь (3652)67-13-56
Смоленск (4812)29-41-54
Сочи (862)225-72-31
Ставрополь (8652)20-65-13

Казахстан (772)734-952-31

Сургут (3462)77-98-35
Тверь (4822)63-31-35
Томск (3822)98-41-53
Тула (4872)74-02-29
Тюмень (3452)66-21-18
Ульяновск (8422)24-23-59
Уфа (347)229-48-12
Хабаровск (4212)92-98-04
Челябинск (351)202-03-61
Череповец (8202)49-02-64
Ярославль (4852)69-52-93

www.panblast.nt-rt.ru | | pav@nt-rt.ru