

Архангельск (8182)63-90-72
Астана (7172)727-132
Астрахань (8512)99-46-04
Барнаул (3852)73-04-60
Белгород (4722)40-23-64
Брянск (4832)59-03-52
Владивосток (423)249-28-31
Волгоград (844)278-03-48
Вологда (8172)26-41-59
Воронеж (473)204-51-73
Екатеринбург (343)384-55-89
Иваново (4932)77-34-06

Ижевск (3412)26-03-58
Иркутск (395)279-98-46
Казань (843)206-01-48
Калининград (4012)72-03-81
Калуга (4842)92-23-67
Кемерово (3842)65-04-62
Киров (8332)68-02-04
Краснодар (861)203-40-90
Красноярск (391)204-63-61
Курск (4712)77-13-04
Липецк (4742)52-20-81

Киргизия (996)312-96-26-47

Магнитогорск (3519)55-03-13
Москва (495)268-04-70
Мурманск (8152)59-64-93
Набережные Челны (8552)20-53-41
Нижний Новгород (831)429-08-12
Новокузнецк (3843)20-46-81
Новосибирск (383)227-86-73
Омск (3812)21-46-40
Орел (4862)44-53-42
Оренбург (3532)37-68-04
Пенза (8412)22-31-16

Россия (495)268-04-70

Пермь (342)205-81-47
Ростов-на-Дону (863)308-18-15
Рязань (4912)46-61-64
Самара (846)206-03-16
Санкт-Петербург (812)309-46-40
Саратов (845)249-38-78
Севастополь (8692)22-31-93
Симферополь (3652)67-13-56
Смоленск (4812)29-41-54
Сочи (862)225-72-31
Ставрополь (8652)20-65-13

Казахстан (772)734-952-31

Сургут (3462)77-98-35
Тверь (4822)63-31-35
Томск (3822)98-41-53
Тула (4872)74-02-29
Тюмень (3452)66-21-18
Ульяновск (8422)24-23-59
Уфа (347)229-48-12
Хабаровск (4212)92-98-04
Челябинск (351)202-03-61
Череповец (8202)49-02-64
Ярославль (4852)69-52-93

www.panblast.nt-rt.ru | | pav@nt-rt.ru

Технические характеристики на аппараты безвоздушной покраски (насосы для безвоздушного распыления)

КОМПАНИИ **PanBlast**



Airless Spray Pumps



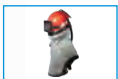
Complementary Products



Pressure Blast Pots



Titan II SAR



Cosmo SAR



Galaxy Blast Helmet



Spartan Blast Helmet



PBF Junior Airline Filter



VisiFlo Premium Airline Filter



AirScan CO Monitor



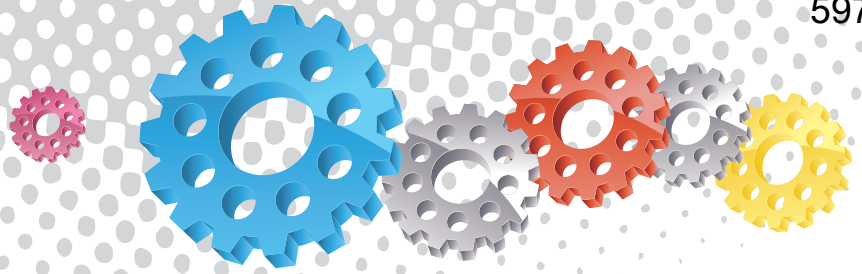
Product Features

PanBlast™ Airless Spray Pumps are available in several standard sizes to suit different application requirements and coating specifications. All pump sizes share two standard gun styles and multiple spray tips.

- ▶ Portable design and rugged frame.
- ▶ HP Spray Gun good for use up to 500 bar (7,250 psi).
- ▶ Four Finger Spray Gun good for use up to 700 bar (10,150 psi).
- ▶ Standard flat tips or RAC switch tips.
- ▶ Pump ratios of 30:1, 45:1, 63:1, 68:1 and 73:1.

Common Applications

- ▶ On site industrial and commercial coating.
- ▶ Blast and paint contractor yard work.
- ▶ Painting room applications.
- ▶ In situ coating in shipyards and slipways.



Airless Spray Pumps

Stock Code	BPE-SE-MD-301-000	BPE-SE-MD-451-000	BPE-SE-MD-631-000	BPE-SE-MD-681-000	BPE-SE-MD-731-000	Unit
Fluid Pressure	30:1	45:1	63:1	68:1	73:1	
Delivery (Max Capacity)	1 (4)	3.4 (12.7)	2.6 (10)	2.8 (10.8)	2.7 (11)	gpm (L/min)
Cycle Per Gallon	60	15	19	17	15.8	cycle
Cycle Per Litre	15	4	5	4.6	4.2	cycle
Max. Recommended Pump Speed	60	50	50	50	50	cycl/min
Air Motor Effective Dia	6.3 (160)	10 (254)	10 (254)	10 (254)	10 (254)	inch (mm)
Stroke (Air Motor)	4 (104)	5 (120)	5 (120)	5 (120)	5 (120)	inch (mm)
App. Air Consumption (5 bar)	2000	4600	4600	4600	9630	Liter/min
Air Operating Pressure Range	40-105 (3-7)	40-90 (3-6)	40-90 (3-6)	40-90 (3-6)	40-105 (3-7)	psag (bar)
Noise Level	80	95	95	65-80	75-80	dBA
Max Discharges Pressure	3248 (224)	3915 (270)	5841 (378)	6500 (442)	7300 (510)	psag (bar)
Packing	Leather/Teflon	Leather/Teflon	Leather/Teflon	Leather/Teflon	Leather/Teflon	
Air Inlet	3/8"	3/4"	3/4"	3/4"	3/4"	in.NPT (F)
Fluid Outlet	1/4"	3/8"	3/8"	3/8"	3/8"	in.NPT (F)

Service Kits

Air Motor Service Kit	Stock Code	BPE-SA-MD-301-700	BPE-SA-MD-451-700	BPE-SA-MD-631-700	BPE-SA-MD-681-700	BPE-SA-MD-731-700
	Description	30:1 Air Motor Repair Kit	45:1 Air Motor Repair Kit	63:1 Air Motor Repair Kit	68:1 Air Motor Repair Kit	73:1 Air Motor Repair Kit
Displacement Pump Service Kit	Stock Code	BPE-SA-MD-301-800	BPE-SA-MD-451-800	BPE-SA-MD-631-800	BPE-SA-MD-681-800	BPE-SA-MD-731-800
	Description	30:1 Displacement Pump Repair Kit	45:1 Displacement Pump Repair Kit	63:1 Displacement Pump Repair Kit	68:1 Displacement Pump Repair Kit	73:1 Displacement Pump Repair Kit

Optional Accessories

Stock Code	Description	Stock Code	Description	Stock Code	Description
BPE-OS-PB-0001	Air Fed Painting Hood	BPE-ST-GC-269-217	Contractor Flat Tip 269-217	BPE-ST-GC-286-519	Rac 5 Switch Tip 286-519
BPE-OS-PB-0002	Paint Hood Plexiglass Lens	BPE-ST-GC-269-219	Contractor Flat Tip 269-219	BPE-ST-GC-LTX211	Rac Switch Tip - LTX211
BPE-SA-MD-810-000	1/4" x 15 m Airless Paint Hose	BPE-ST-GC-269-317	Contractor Flat Tip 269-317	BPE-ST-GC-LTX411	Rac Switch Tip - LTX411
BPE-SA-MD-810-001	3/8" x 15 m Airless Paint Hose	BPE-ST-GC-286-209	Rac 5 Switch Tip 286-209	BPE-ST-GC-LTX415	Rac Switch Tip - LTX415
BPE-SA-MD-MDPH14001	1/4" x 2 m Paint Hose Whip Line 430 BAR	BPE-ST-GC-286-211	Rac 5 Switch Tip 286-211	BPE-ST-GC-XHD-001	Switch Tip XHD-001
BPE-SA-MD-MDPH3815	3/8" x 15 m Airless Paint Hose 430 BAR	BPE-ST-GC-286-213	Rac 5 Switch Tip 286-213	BPE-ST-GC-XHD-209	Switch Tip XHD-209
BPE-SG-MD-073-000	HP Spray Gun	BPE-ST-GC-286-221	Rac 5 Switch Tip 286-221	BPE-ST-GC-XHD-211	Switch Tip XHD-211
BPE-SG-MD-083-000	4 Finger Blue Gun	BPE-ST-GC-286-309	Rac 5 Switch Tip 286-309	BPE-ST-GC-XHD-217	Switch Tip XHD-217
BPE-ST-GC-163-213	Standard Flat Tip 163-213	BPE-ST-GC-286-311	Rac 5 Switch Tip 286-311	BPE-ST-GC-XHD-219	Switch Tip XHD-219
BPE-ST-GC-163-221	Standard Flat Tip 163-221	BPE-ST-GC-286-313	Rac 5 Switch Tip 286-313	BPE-ST-GC-XHD-221	Switch Tip XHD-221
BPE-ST-GC-163-421	Standard Flat Tip 163-421	BPE-ST-GC-286-315	Rac 5 Switch Tip 286-315	BPE-ST-GC-XHD-309	Switch Tip XHD-309
BPE-ST-GC-163-619	Standard Flat Tip 163-619	BPE-ST-GC-286-415	Rac 5 Switch Tip 286-415	BPE-ST-GC-XHD-517	Switch Tip XHD-517
BPE-ST-GC-269-211	Contractor Flat Tip 269-211	BPE-ST-GC-286-419	Rac 5 Switch Tip 286-419		
BPE-ST-GC-269-213	Contractor Flat Tip 269-213	BPE-ST-GC-286-515	Rac 5 Switch Tip 286-515		

Архангельск (8182)63-90-72
Астана (7172)727-132
Астрахань (8512)99-46-04
Барнаул (3852)73-04-60
Белгород (4722)40-23-64
Брянск (4832)59-03-52
Владивосток (423)249-28-31
Волгоград (844)278-03-48
Вологда (8172)26-41-59
Воронеж (473)204-51-73
Екатеринбург (343)384-55-89
Иваново (4932)77-34-06

Ижевск (3412)26-03-58
Иркутск (395)279-98-46
Казань (843)206-01-48
Калининград (4012)72-03-81
Калуга (4842)92-23-67
Кемерово (3842)65-04-62
Киров (8332)68-02-04
Краснодар (861)203-40-90
Красноярск (391)204-63-61
Курск (4712)77-13-04
Липецк (4742)52-20-81

Киргизия (996)312-96-26-47

Магнитогорск (3519)55-03-13
Москва (495)268-04-70
Мурманск (8152)59-64-93
Набережные Челны (8552)20-53-41
Нижний Новгород (831)429-08-12
Новокузнецк (3843)20-46-81
Новосибирск (383)227-86-73
Омск (3812)21-46-40
Орел (4862)44-53-42
Оренбург (3532)37-68-04
Пенза (8412)22-31-16

Россия (495)268-04-70

Пермь (342)205-81-47
Ростов-на-Дону (863)308-18-15
Рязань (4912)46-61-64
Самара (846)206-03-16
Санкт-Петербург (812)309-46-40
Саратов (845)249-38-78
Севастополь (8692)22-31-93
Симферополь (3652)67-13-56
Смоленск (4812)29-41-54
Сочи (862)225-72-31
Ставрополь (8652)20-65-13

Казахстан (772)734-952-31

Сургут (3462)77-98-35
Тверь (4822)63-31-35
Томск (3822)98-41-53
Тула (4872)74-02-29
Тюмень (3452)66-21-18
Ульяновск (8422)24-23-59
Уфа (347)229-48-12
Хабаровск (4212)92-98-04
Челябинск (351)202-03-61
Череповец (8202)49-02-64
Ярославль (4852)69-52-93

www.panblast.nt-rt.ru | | pav@nt-rt.ru