

Архангельск (8182)63-90-72
Астана (7172)727-132
Астрахань (8512)99-46-04
Барнаул (3852)73-04-60
Белгород (4722)40-23-64
Брянск (4832)59-03-52
Владивосток (423)249-28-31
Волгоград (844)278-03-48
Вологда (8172)26-41-59
Воронеж (473)204-51-73
Екатеринбург (343)384-55-89
Иваново (4932)77-34-06

Ижевск (3412)26-03-58
Иркутск (395)279-98-46
Казань (843)206-01-48
Калининград (4012)72-03-81
Калуга (4842)92-23-67
Кемерово (3842)65-04-62
Киров (8332)68-02-04
Краснодар (861)203-40-90
Красноярск (391)204-63-61
Курск (4712)77-13-04
Липецк (4742)52-20-81

Киргизия (996)312-96-26-47

Магнитогорск (3519)55-03-13
Москва (495)268-04-70
Мурманск (8152)59-64-93
Набережные Челны (8552)20-53-41
Нижний Новгород (831)429-08-12
Новокузнецк (3843)20-46-81
Новосибирск (383)227-86-73
Омск (3812)21-46-40
Орел (4862)44-53-42
Оренбург (3532)37-68-04
Пенза (8412)22-31-16

Россия (495)268-04-70

Пермь (342)205-81-47
Ростов-на-Дону (863)308-18-15
Рязань (4912)46-61-64
Самара (846)206-03-16
Санкт-Петербург (812)309-46-40
Саратов (845)249-38-78
Севастополь (8692)22-31-93
Симферополь (3652)67-13-56
Смоленск (4812)29-41-54
Сочи (862)225-72-31
Ставрополь (8652)20-65-13

Казахстан (772)734-952-31

Сургут (3462)77-98-35
Тверь (4822)63-31-35
Томск (3822)98-41-53
Тула (4872)74-02-29
Тюмень (3452)66-21-18
Ульяновск (8422)24-23-59
Уфа (347)229-48-12
Хабаровск (4212)92-98-04
Челябинск (351)202-03-61
Череповец (8202)49-02-64
Ярославль (4852)69-52-93

www.panblast.nt-rt.ru | | pav@nt-rt.ru

Технические характеристики на абразивные дозирующие клапаны автоматические плунжерные, с уретановым рукавом, с вольфрамовой втулкой компании **PanBlast**



Corsa NPT Valves With Urethane Sleeve



Product Features

The original PanBlast™ Corsa Valve is a normally closed abrasive metering valve requiring a pilot air signal to permit abrasive flow. The valve may be used on both pressure hold blast pots and pressure release blast pots. The NPT version is intended for connection with most US equipment and is available in various sizes and multiple configurations.

- ▶ Quick valve actuation.
- ▶ Precise sealing.
- ▶ Exhaust filter prevents dust from entering air chamber.
- ▶ Easy assembly and disassembly.
- ▶ Hardened connecting nipple.
- ▶ Improved plunger and urethane sleeve for greater reliability.
- ▶ Improved plunger seat and piston.

Common Applications

- ▶ Pressure hold blast pots and multiple outlet blast pots.
- ▶ Pressure release blast pots, to prevent unwanted filling of blast hose.

Complementary Products



Couplings & Nozzle Holders



AirStop II Pneumatic Handle



Blast Nozzles



Plastic Media



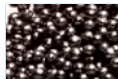
Whip Check Cables



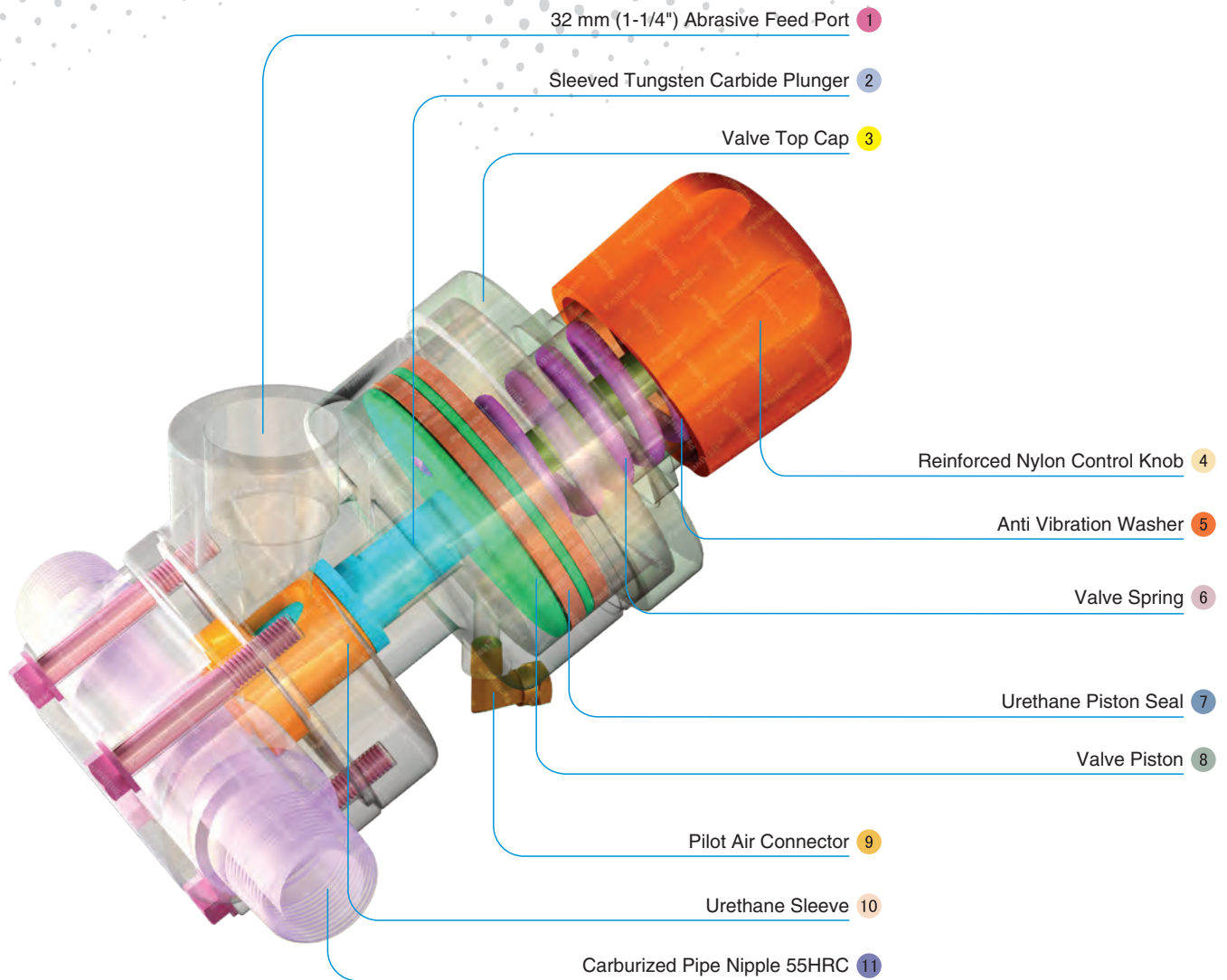
Steel Shot



Blast Hoses



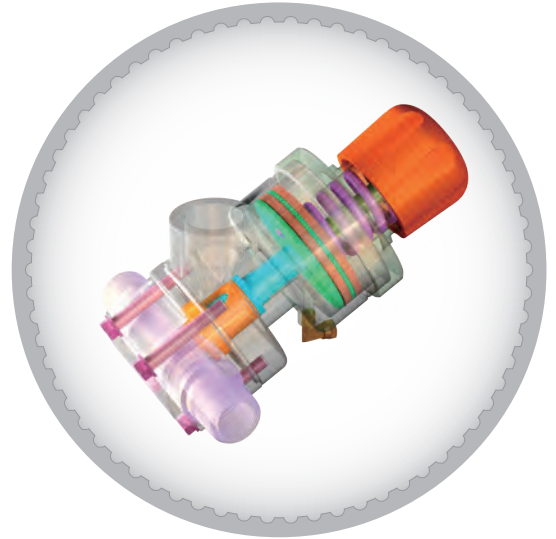
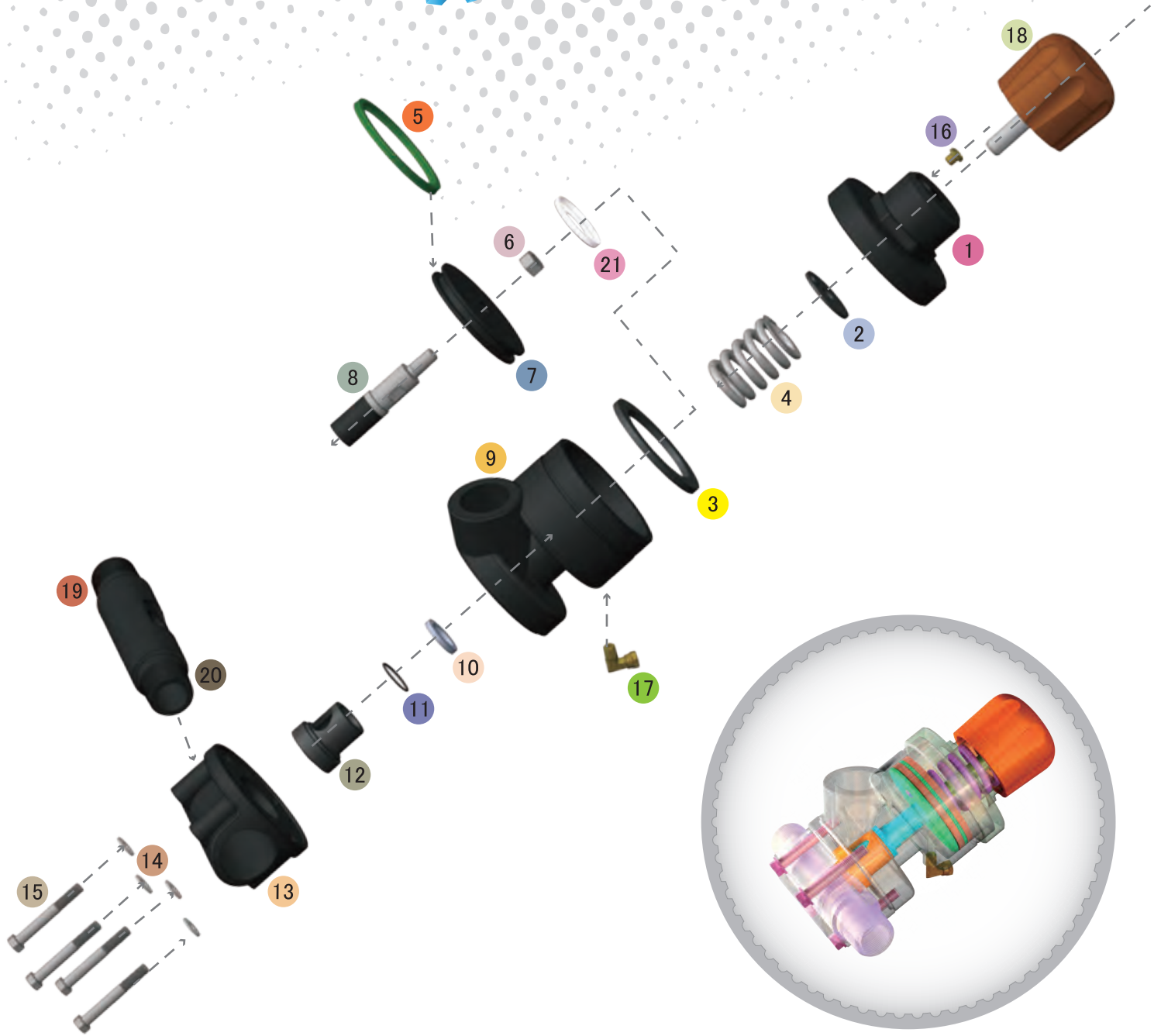
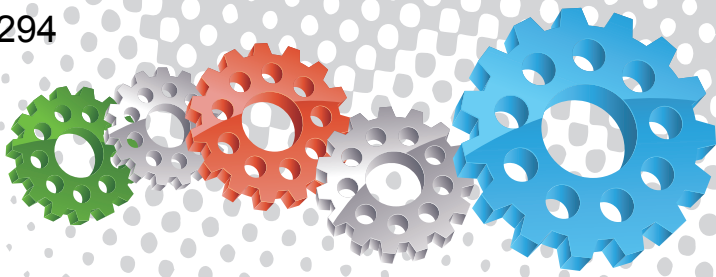
Stainless Steel Shot



Component Highlights



- | | | |
|-------------------------------------|-------------------------|---------------------------------|
| 1 32 mm (1-1/4") Abrasive Feed Port | 5 Anti Vibration Washer | 9 Pilot Air Connector |
| 2 Sleeved Tungsten Carbide Plunger | 6 Valve Spring | 10 Urethane Sleeve |
| 3 Valve Top Cap | 7 Urethane Piston Seal | 11 Carburized Pipe Nipple 55HRC |
| 4 Reinforced Nylon Control Knob | 8 Valve Piston | |



Assemblies

Stock Code	Description	Weight
BAC-VA-PB-0164	Corsa NPT 1-1/4" With Urethane Sleeve	5.95 kg (13.09 lbs)
BAC-VA-PB-0162	Corsa NPT 1-1/2" With Urethane Sleeve	5.82 kg (12.80 lbs)

Service Kits

Stock Code	Description	Include Items
BAC-VA-PB-0166	Corsa NPT Urethane Service Kit	5 8 10 11 12
BAC-VA-PB-0189	Corsa NPT Lower Seal Kit	5 10 11 12
BAC-VA-PB-0198	Corsa NPT Top Cap Kit	1 2 16
BAC-VA-PB-0211	Corsa NPT Valve Base Kit	13 14 15



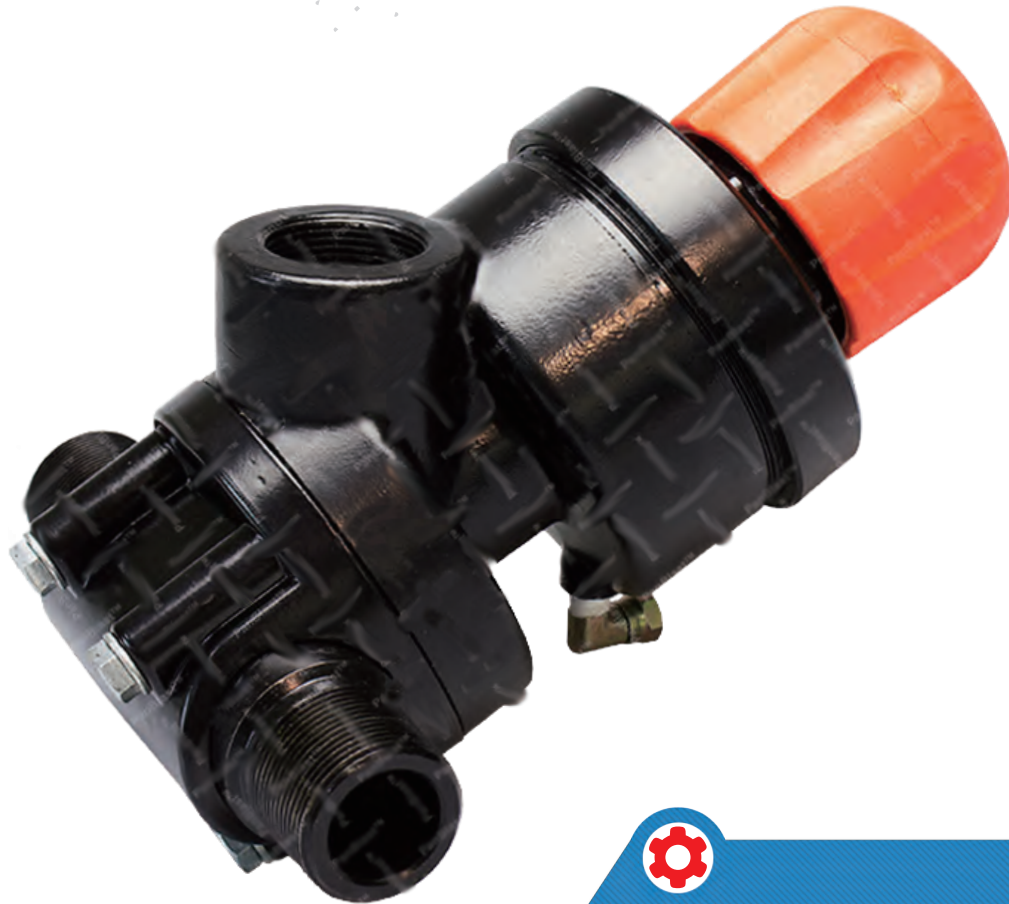
Parts List



Description	Qty	Description	Qty	Description	Qty
1 Top Cap NPT	1	8 Tungsten Carbide Plunger - Standard	1	15 Hex Head Bolt	4
2 Anti Vibration Washer	1	9 Cylinder NPT	1	16 Exhaust Filter	1
3 Stop Ring	1	10 Plunger Seal	1	17 Elbow With Nut - NPT	1
4 Spring	1	11 O-Ring	1	18 Control Knob (Orange)	1
5 Piston Seal	1	12 Urethane Sleeve	1	19 Pipe Nipple 1-1/4"X 1-1/4"NPT (Applicable to valve BAC-VA-PB-0164)	1
6 1/2" UNC Nut	1	13 Base - NPT	1	20 Pipe Nipple 1-1/2"X 1-1/2"NPT (Applicable to valve BAC-VA-PB-0162)	1
7 Piston	1	14 Flat Washer	4	21 Spring Seat	1



Corsa NPT Valves With Tungsten Sleeve



Product Features

The original PanBlast™ Corsa valve is a normally closed abrasive metering valve requiring a pilot air signal to permit abrasive flow. The valve may be used on both pressure hold blast pots and pressure release blast pots. The NPT version is intended for connection with most US equipment and is available in various sizes and multiple configurations.

- ▶ Quick valve actuation.
- ▶ Precise sealing.
- ▶ Exhaust filter prevents dust from entering air chamber.
- ▶ Easy assembly and disassembly.
- ▶ Hardened connecting nipple.
- ▶ Improved carbide plunger seat sleeve provides longer feed orifice life.
- ▶ Improved plunger seat and piston design.

Common Applications

- ▶ Pressure hold blast pots and multiple outlet blast pots.
- ▶ Pressure release blast pots, to prevent unwanted filling of blast hose.

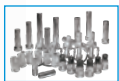
Complementary Products



Couplings & Nozzle Holders



AirStop II Pneumatic Handle



Blast Nozzles



Plastic Media



Whip Check Cables



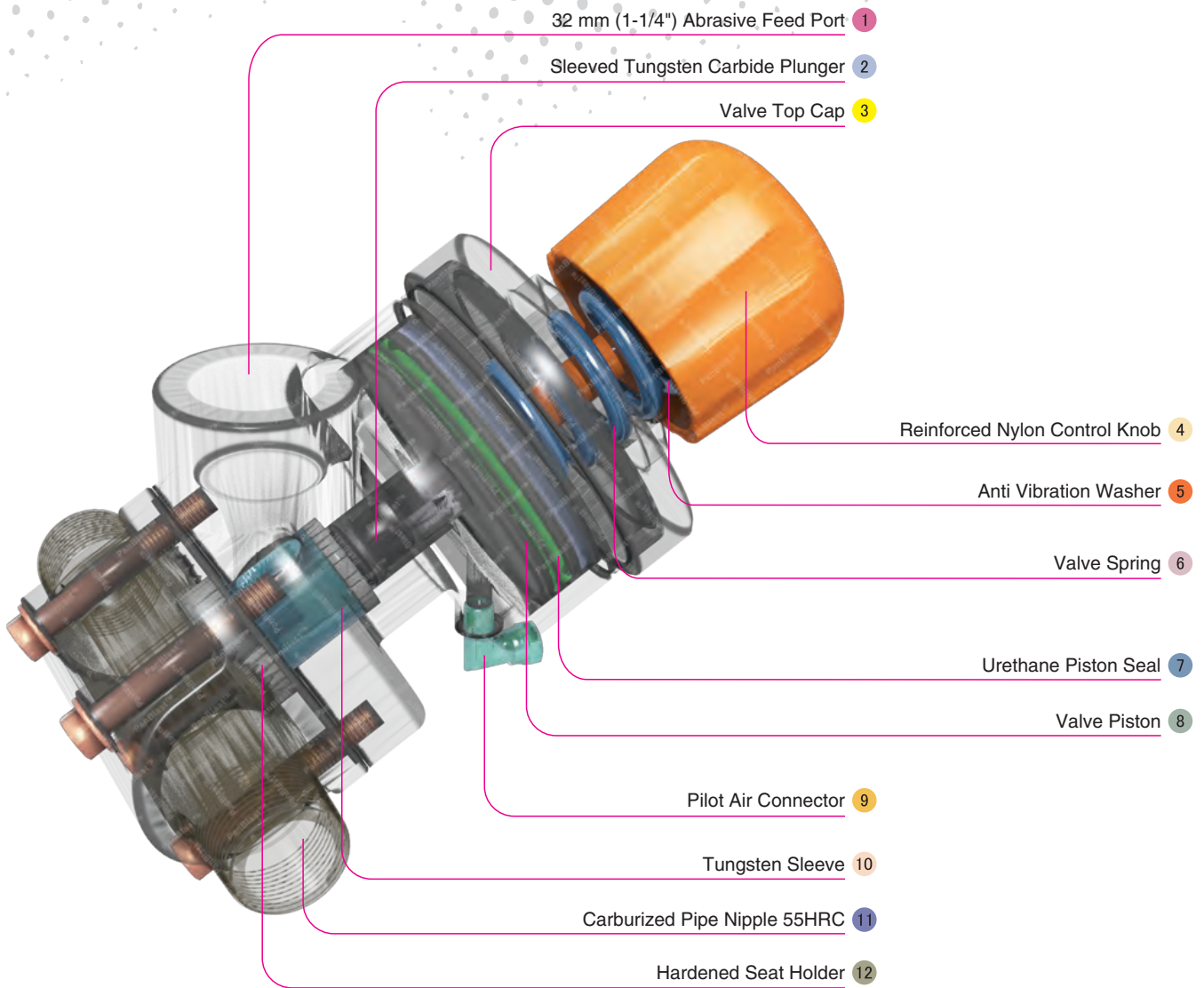
Steel Shot



Blast Hoses



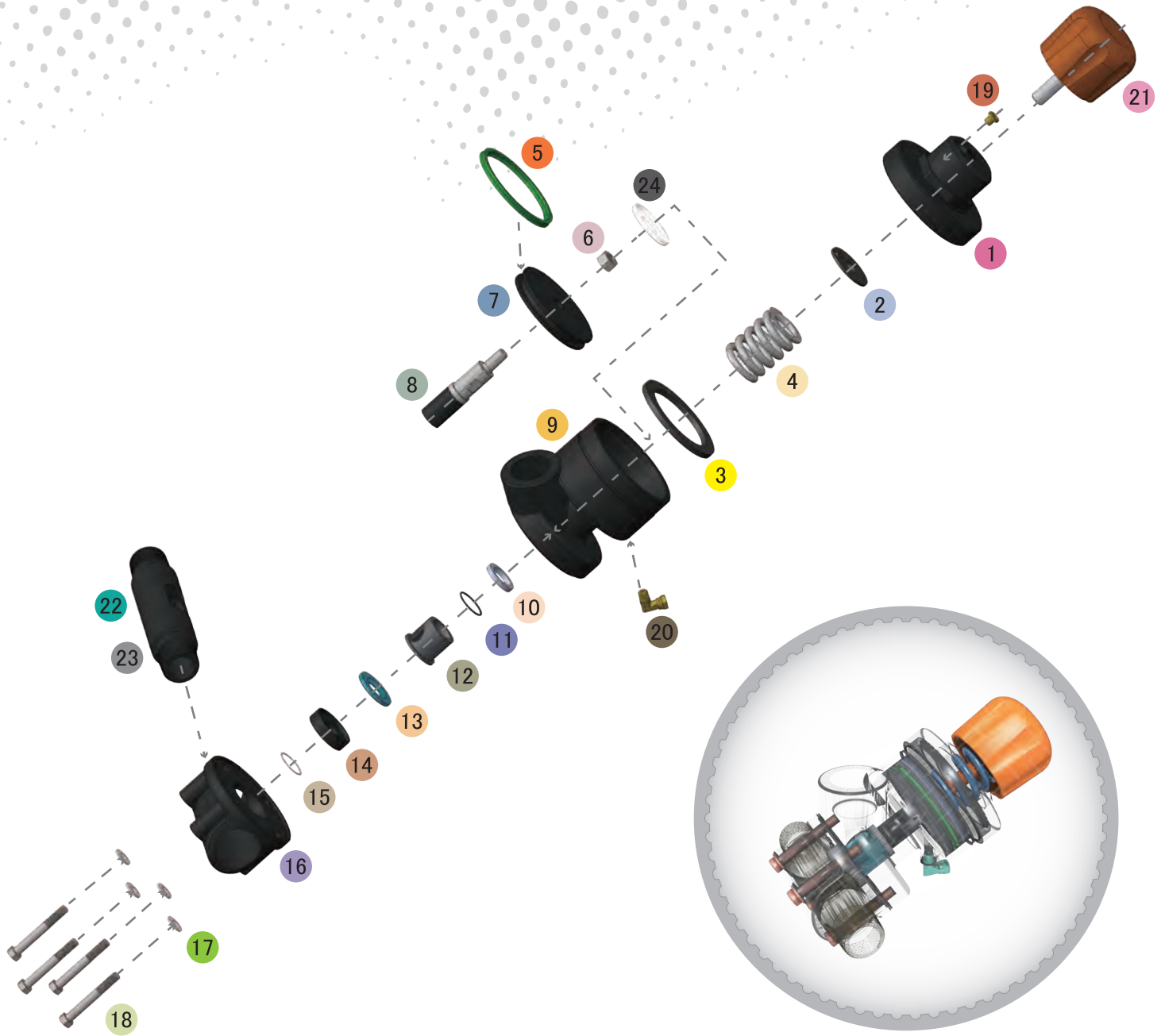
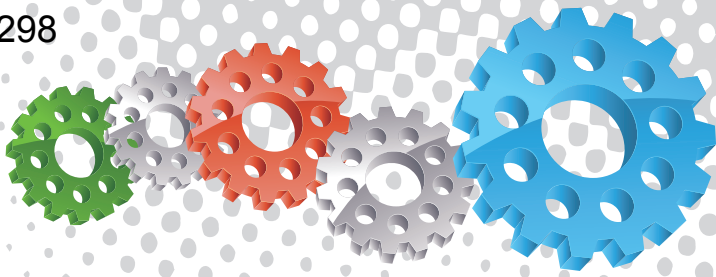
Stainless Steel Shot



Component Highlights



- | | | |
|-------------------------------------|-------------------------|---------------------------------|
| 1 32 mm (1-1/4") Abrasive Feed Port | 5 Anti Vibration Washer | 9 Pilot Air Connector |
| 2 Sleeved Tungsten Carbide Plunger | 6 Valve Spring | 10 Tungsten Sleeve |
| 3 Valve Top Cap | 7 Urethane Piston Seal | 11 Carburized Pipe Nipple 55HRC |
| 4 Reinforced Nylon Control Knob | 8 Valve Piston | 12 Hardened Seat Holder |



Assemblies

Stock Code	Description	Weight
BAC-VA-PB-0165	Corsa NPT 1-1/4" With Tungsten Sleeve	6.13 kg (13.49 lbs)
BAC-VA-PB-0163	Corsa NPT 1-1/2" With Tungsten Sleeve	6.08 kg (13.38 lbs)

Service Kits

Stock Code	Description	Include Items
BAC-VA-PB-0028	Corsa Tungsten Seat Kit	13 14 15
BAC-VA-PB-0029	Corsa Piston Kit	2 3 4 5 6 7
BAC-VA-PB-0167	Corsa NPT Tungsten Service Kit	5 8 10 11 12 13 14 15
BAC-VA-PB-0188	Corsa NPT Upper Seal Kit	5 10 11 13 15
BAC-VA-PB-0211	Corsa NPT Valve Base Kit	16 17 18



Parts List



Description	Qty	Description	Qty	Description	Qty
1 Top Cap NPT	1	9 Cylinder NPT	1	17 Flat Washer	4
2 Anti Vibration Washer	1	10 Plunger Seal	1	18 Hex Head Bolt	4
3 Stop Ring	1	11 O-Ring	1	19 Exhaust Filter	1
4 Spring	1	12 Tungsten Carbide Sleeve	1	20 Elbow With Nut - NPT	1
5 Piston Seal	1	13 Urethane Seat	1	21 Control Knob (Orange)	1
6 1/2" UNC Nut	1	14 Seat Holder	1	22 Pipe Nipple 1-1/4"X 1-1/4"NPT (Applicable to valve BAC-VA-PB-0165)	1
7 Piston	1	15 O-ring	1	23 Pipe Nipple 1-1/2"X 1-1/2"NPT (Applicable to valve BAC-VA-PB-0163)	1
8 Tungsten Carbide Plunger - Standard	1	16 Base - NPT	1	24 Spring Seat	1



Corsa II Valves With Urethane Sleeve



Product Features

The PanBlast™ Corsa II Valve is an improved, normally closed abrasive metering valve requiring a pilot air signal to permit abrasive flow. The valve may be used on both pressure hold blast pots and pressure release blast pots. The BSP version is intended for connection with most non-US equipment and is available in various sizes and multiple configurations.

- ▶ Quick valve actuation.
- ▶ Anti-vibration washer.
- ▶ Exhaust filter prevents dust from entering air chamber.
- ▶ Solid tungsten carbide plunger.
- ▶ Hardened connecting pipe nipple.
- ▶ Piston travel stop nut.
- ▶ Improved plunger seat and piston design.
- ▶ Stainless steel internal parts.
- ▶ Clean out/drain port.
- ▶ Graduation markings.

Common Applications

- ▶ Pressure hold blast pots and multiple outlet blast pots.
- ▶ Pressure release blast pots, to prevent unwanted filling of blast hose.

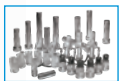
Complementary Products



Couplings & Nozzle Holders



AirStop II Pneumatic Handle



Blast Nozzles



Plastic Media



Whip Check Cables



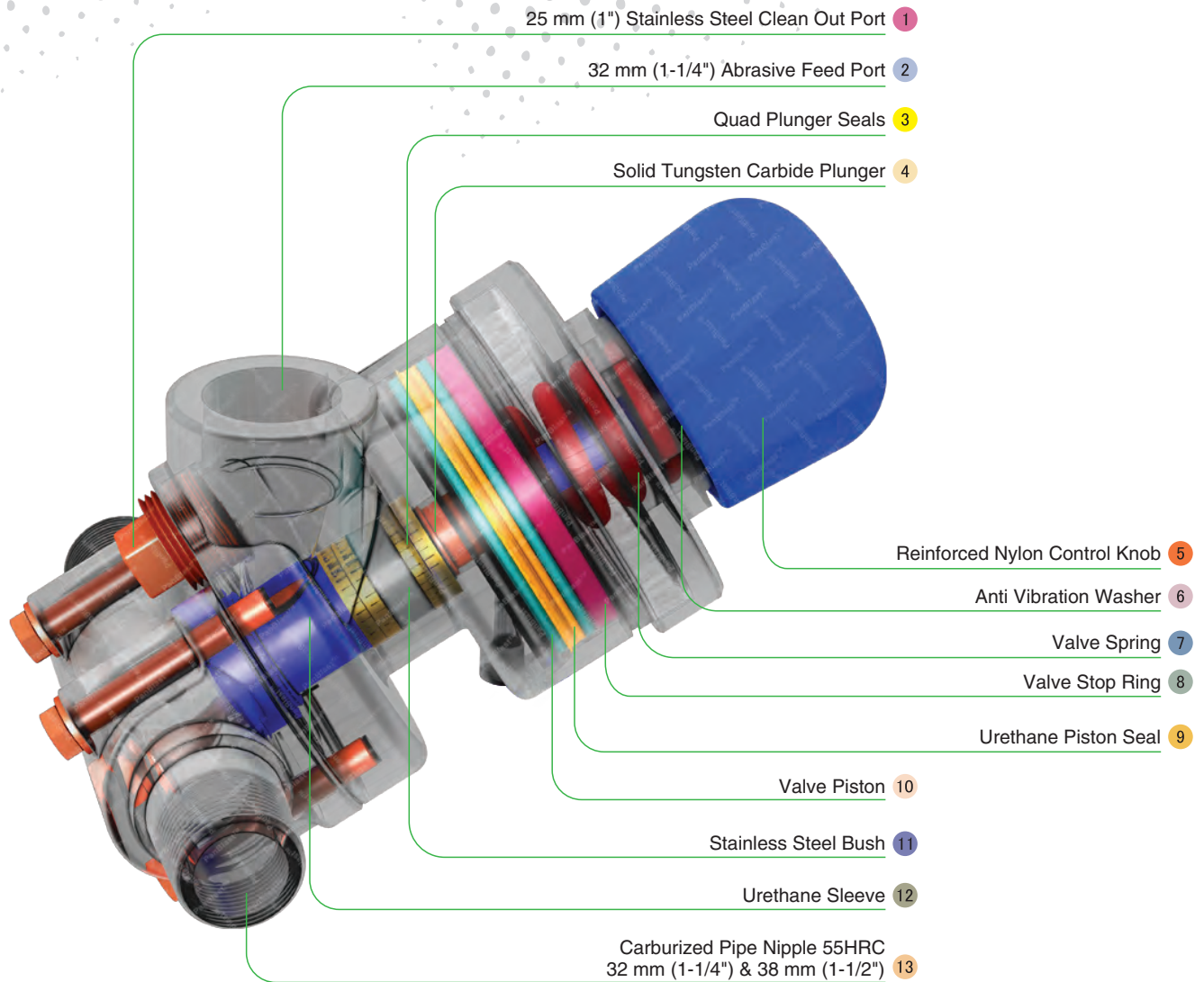
Steel Shot



Blast Hoses



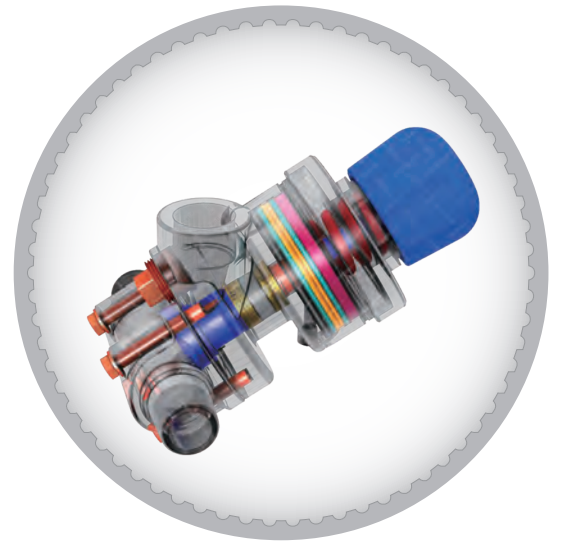
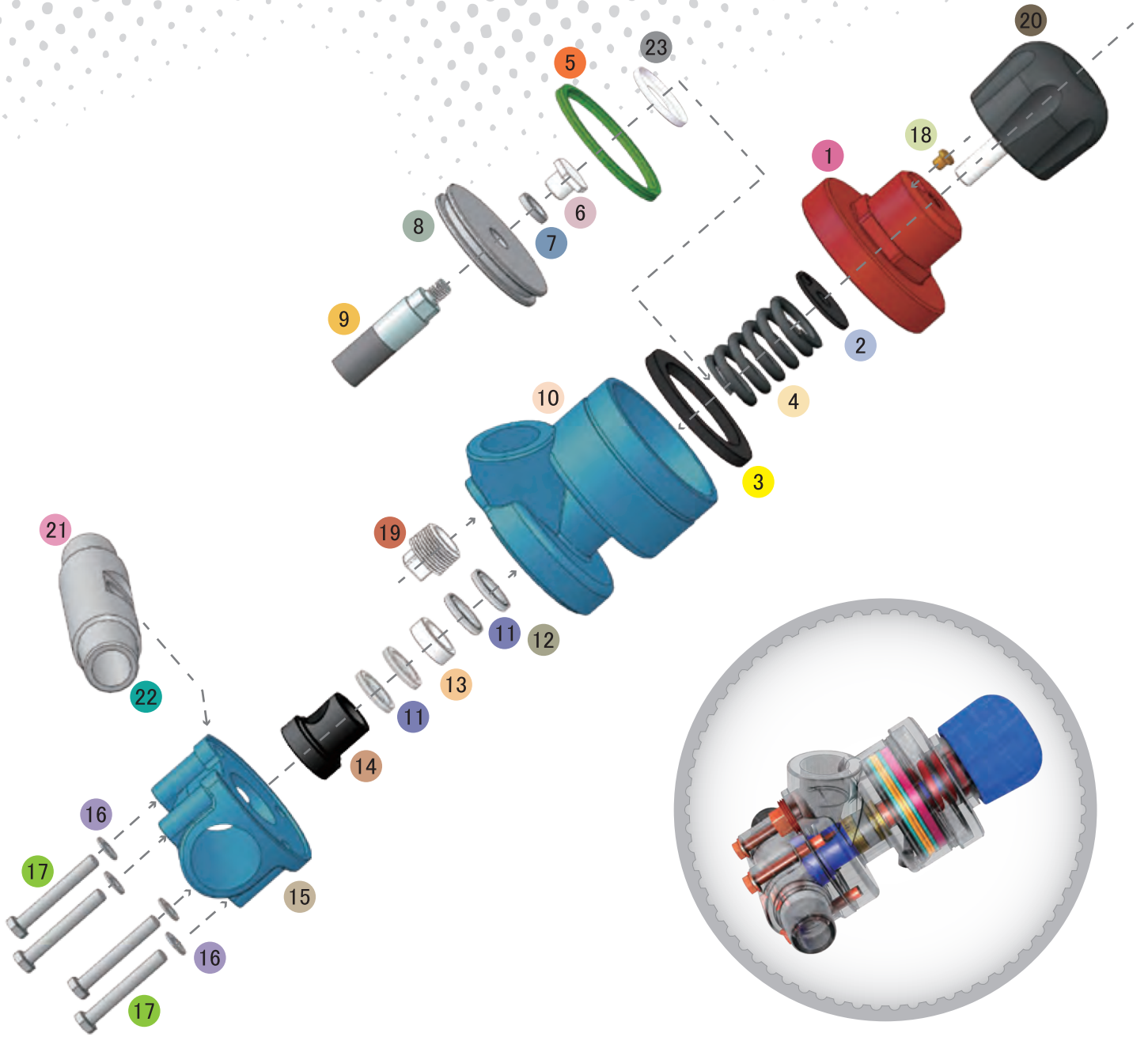
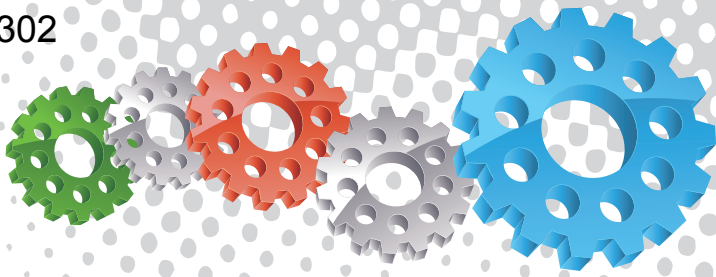
Stainless Steel Shot



Component Highlights



- | | | |
|---|-------------------------|--|
| 1 25 mm (1") Stainless Steel Clean Out Port | 6 Anti Vibration Washer | 11 Stainless Steel Bush |
| 2 32 mm (1-1/4") Abrasive Feed Port | 7 Valve Spring | 12 Urethane Sleeve |
| 3 Quad Plunger Seals | 8 Valve Stop Ring | 13 Carburized Pipe Nipple 55HRC
32 mm (1-1/4") & 38 mm (1-1/2") |
| 4 Solid Tungsten Carbide Plunger | 9 Urethane Piston Seal | |
| 5 Reinforced Nylon Control Knob | 10 Valve Piston | |



Assemblies

Stock Code	Description	Weight
BAC-VA-PB-0117	Corsa II Valve 1-1/4" With Urethane Sleeve	5.90 kg (12.98 lbs)
BAC-VA-PB-0118	Corsa II Valve 1-1/2" With Urethane Sleeve	6.10 kg (13.42 lbs)

Service Kits

Stock Code	Description	Include Items
BAC-VA-PB-0119	Corsa II Urethane Seal Kit	5 11 12 13 14
BAC-VA-PB-0139	Corsa II Piston Kit	2 3 4 5 6 7 8
BAC-VA-PB-0140	Corsa II Valve Base Kit	15 16 17
BAC-VA-PB-0223	Corsa II NPT Urethane Sleeve Kit	5 11 12 14



Parts List



Description	Qty	Description	Qty	Description	Qty
1 Top Cover	1	9 Tungsten Plunger	1	17 Hex Head Bolt	4
2 Anti-Vibration Washer	1	10 Cylinder	1	18 Exhaust Filter	1
3 Stop Ring	1	11 Plunger Seal	4	19 Plug - Stainless Steel	1
4 Spring	1	12 O-Ring	2	20 Control Knob	1
5 Piston Seal	1	13 Bush	1	21 Corsa 1-1/4"M x 1-1/4"M Pipe Nipple (Applicable to valve BAC-VA-PB-0117)	1
6 Plunger Cover	1	14 Urethane Sleeve	1	22 Corsa 1-1/2"M x 1-1/2"M Pipe Nipple (Applicable to valve BAC-VA-PB-0118)	1
7 Nylon Washer	1	15 Base	1	23 Spring Seat	1
8 Piston	1	16 Flat Washer	4		



Corsa II Valves With Tungsten Sleeve



Product Features

The PanBlast™ Corsa II Valve is an improved, normally closed abrasive metering valve requiring a pilot air signal to permit abrasive flow. The valve may be used on both pressure hold blast pots and pressure release blast pots. The BSP version is intended for use with most non-US equipment and is available in various sizes and multiple configurations.

- ▶ Quick valve actuation.
- ▶ Anti-vibration washer.
- ▶ Exhaust filter prevents dust from entering air chamber.
- ▶ Solid tungsten carbide plunger.
- ▶ Hardened connecting pipe nipple.
- ▶ Piston travel stop nut.
- ▶ Improved plunger seat and piston design.
- ▶ Stainless steel internal parts.
- ▶ Clean out/drain port.
- ▶ Graduation markings.

Common Applications

- ▶ Pressure hold blast pots and multiple outlet blast pots.
- ▶ Pressure release blast pots, to prevent unwanted filling of blast hose.

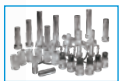
Complementary Products



Couplings & Nozzle Holders



AirStop II Pneumatic Handle



Blast Nozzles



Garnet



Whip Check Cables



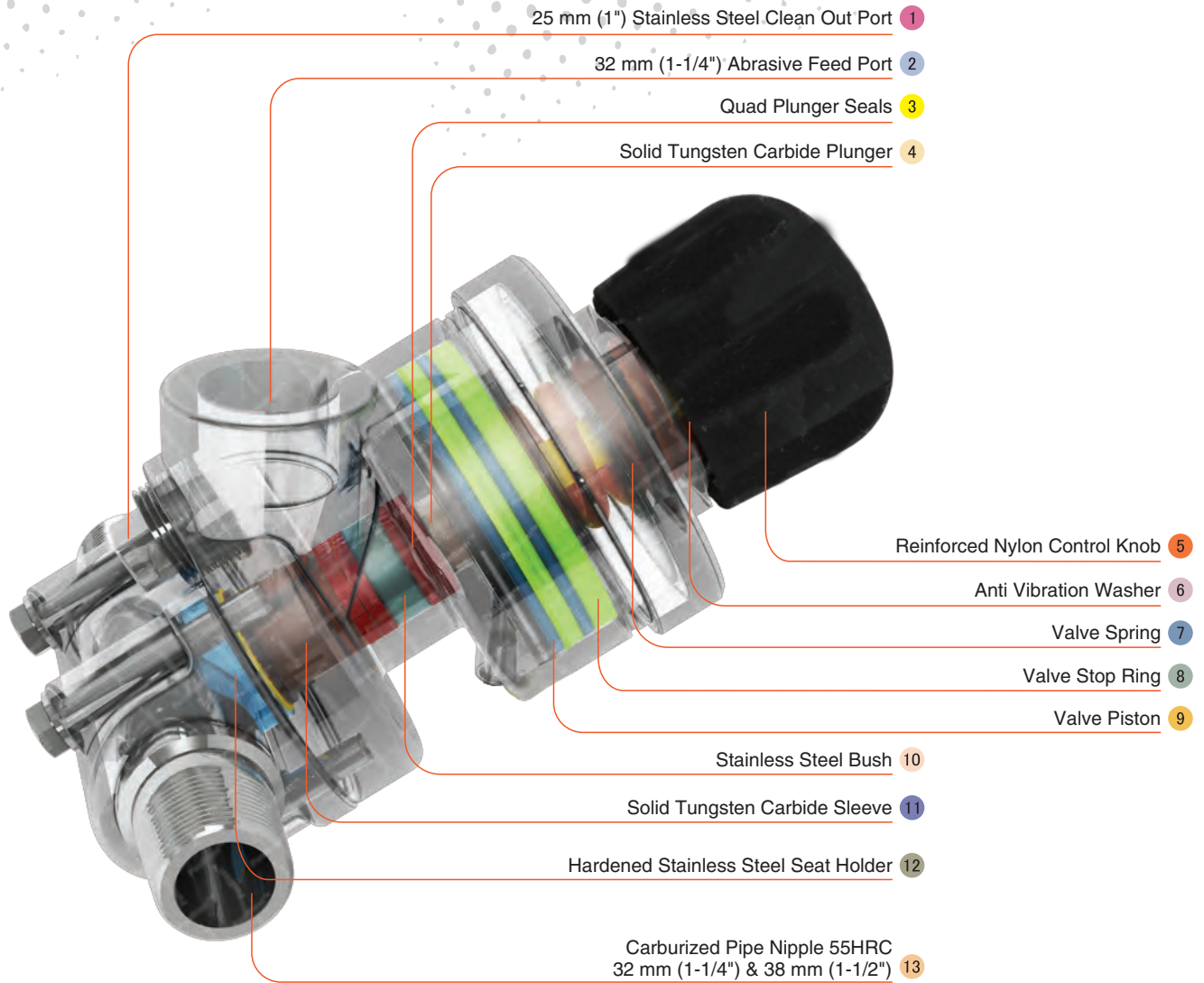
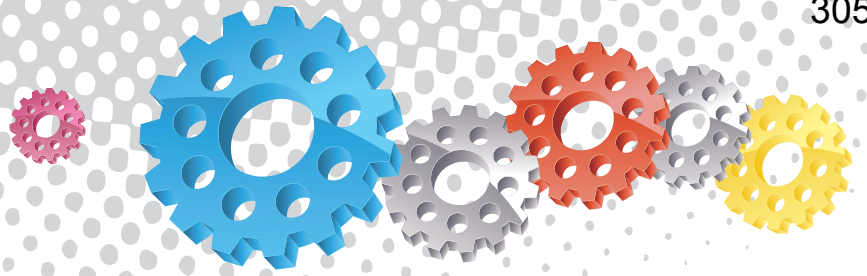
Steel Grit



Blast Hoses



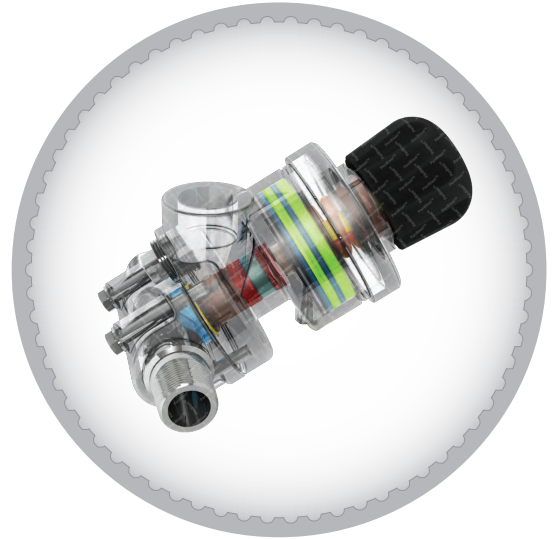
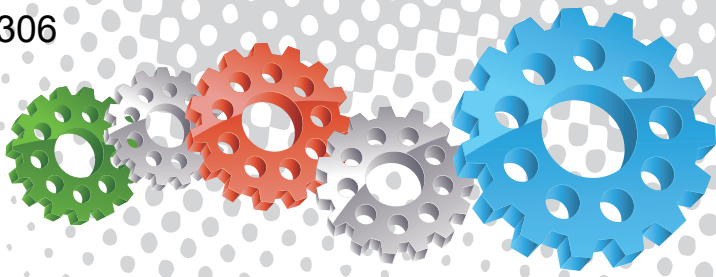
Aluminium Oxide



Component Highlights



- | | | |
|---|-------------------------|--|
| 1 25 mm (1") Stainless Steel Clean Out Port | 6 Anti Vibration Washer | 11 Solid Tungsten Carbide Sleeve |
| 2 32 mm (1-1/4") Abrasive Feed Port | 7 Valve Spring | 12 Hardened Stainless Steel Seat Holder |
| 3 Quad Plunger Seals | 8 Valve Stop Ring | 13 Carburized Pipe Nipple 55HRC
32 mm (1-1/4") & 38 mm (1-1/2") |
| 4 Solid Tungsten Carbide Plunger | 9 Valve Piston | |
| 5 Reinforced Nylon Control Knob | 10 Stainless Steel Bush | |



Assemblies

Stock Code	Description	Weight
BAC-VA-PB-0089	Corsa II 1-1/4" With Tungsten Sleeve	6.20 kg (13.64 lbs)
BAC-VA-PB-0114	Corsa II 1-1/2" With Tungsten Sleeve	6.40 kg (14.08 lbs)

Service Kits

Stock Code	Description	Include Items
BAC-VA-PB-0138	Corsa II Tungsten Seat Kit	15 16 17
BAC-VA-PB-0113	Corsa II Tungsten Seal Kit	5 11 12 13 14 15 16 17
BAC-VA-PB-0139	Corsa II Piston Kit	2 3 4 5 6 7 8
BAC-VA-PB-0140	Corsa II Valve Base Kit	18 19 20
BAC-VA-0333-00	Corsa II Valve Seal Kit - Soft	5 11 12 15 17



Parts List



Description	Qty	Description	Qty	Description	Qty
1 Top Cover	1	10 Cylinder	1	19 Flat Washer	4
2 Anti-Vibration Washer	1	11 Plunger Seal	4	20 Hex Head Bolt	4
3 Stop Ring	1	12 O-Ring	2	21 Exhaust Filter	1
4 Spring	1	13 Bush	1	22 Plug - Stainless Steel	1
5 Piston Seal	1	14 Tungsten Carbide Sleeve	1	23 Control Knob	1
6 Plunger Cover	1	15 Urethane Seat	1	24 Corsa 1-1/4"M x 1-1/4"M Pipe Nipple (Applicable to valve BAC-VA-PB-0089)	1
7 Nylon Washer	1	16 Seat Holder	1	25 Corsa 1-1/2"M x 1-1/2"M Pipe Nipple (Applicable to valve BAC-VA-PB-0114)	1
8 Piston	1	17 O-Ring	1	26 Spring Seat	1
9 Tungsten Plunger	1	18 Base	1		



Corsa II NPT Valves With Urethane Sleeve



Product Features

The PanBlast™ Corsa II valve is an improved, normally closed abrasive metering valve requiring a pilot air signal to permit abrasive flow. The valve may be used on both pressure hold blast pots and pressure release blast pots. The NPT version is intended for use with most US equipment and is available in various sizes and multiple configurations.

- ▶ Quick valve actuation.
- ▶ Anti-vibration washer.
- ▶ Exhaust filter prevents dust from entering air chamber.
- ▶ Tungsten carbide plunger.
- ▶ Hardened connecting nipple.
- ▶ Piston travel stop nut.
- ▶ Improved plunger seat and piston design.
- ▶ Stainless steel internal parts.
- ▶ Clean out/drain port.
- ▶ Graduation markings.

Common Applications

- ▶ Pressure hold blast pots and multiple outlet blast pots.
- ▶ Pressure release blast pots, to prevent unwanted filling of blast hose.

Complementary Products



Couplings & Nozzle Holders



AirStop II Pneumatic Handle



Blast Nozzles



Plastic Media



Whip Check Cables



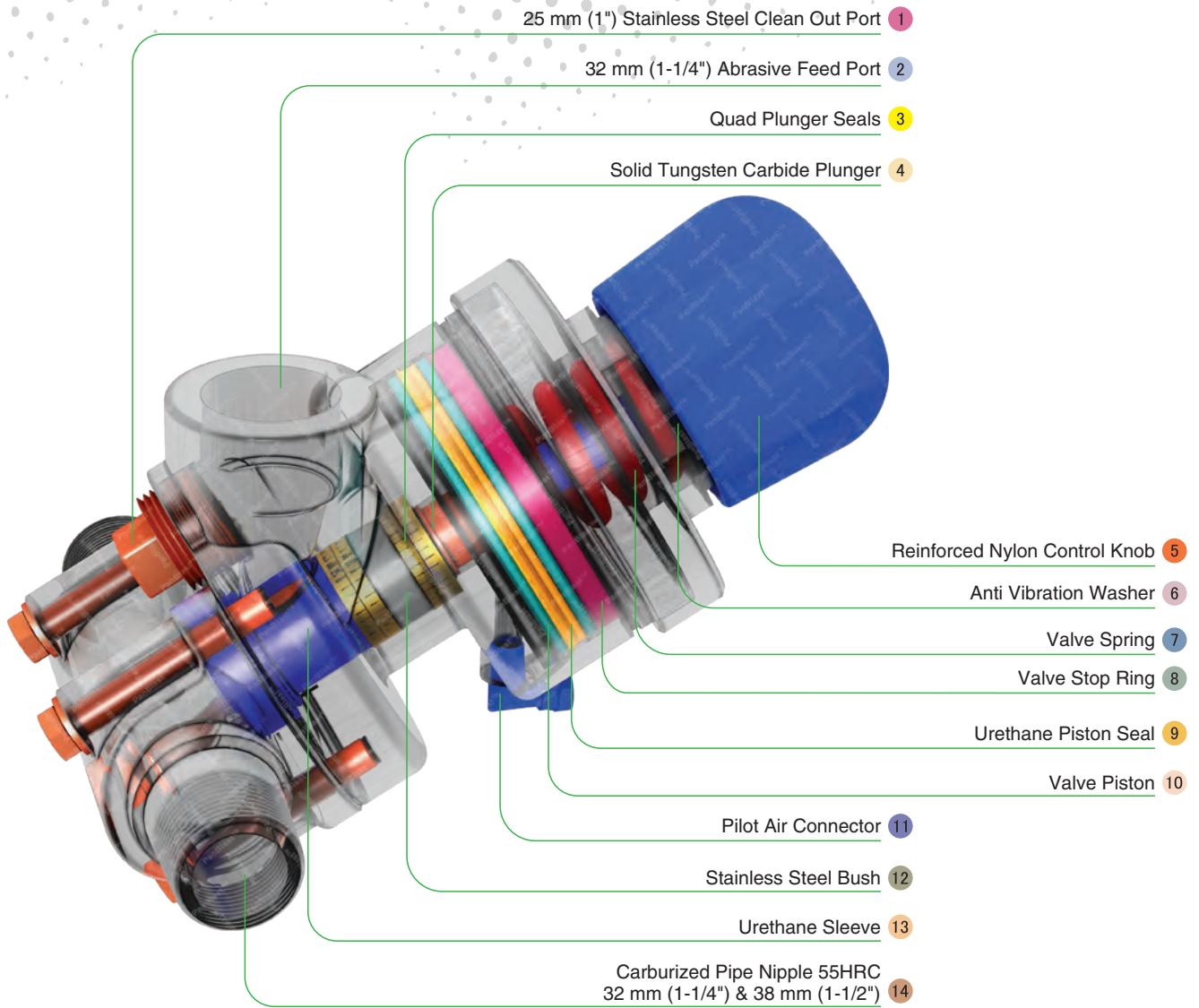
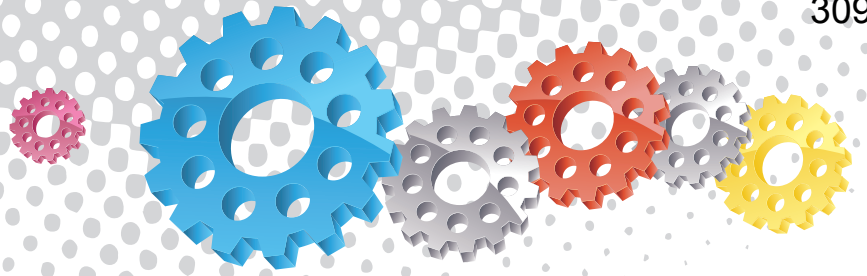
Steel Shot



Blast Hoses



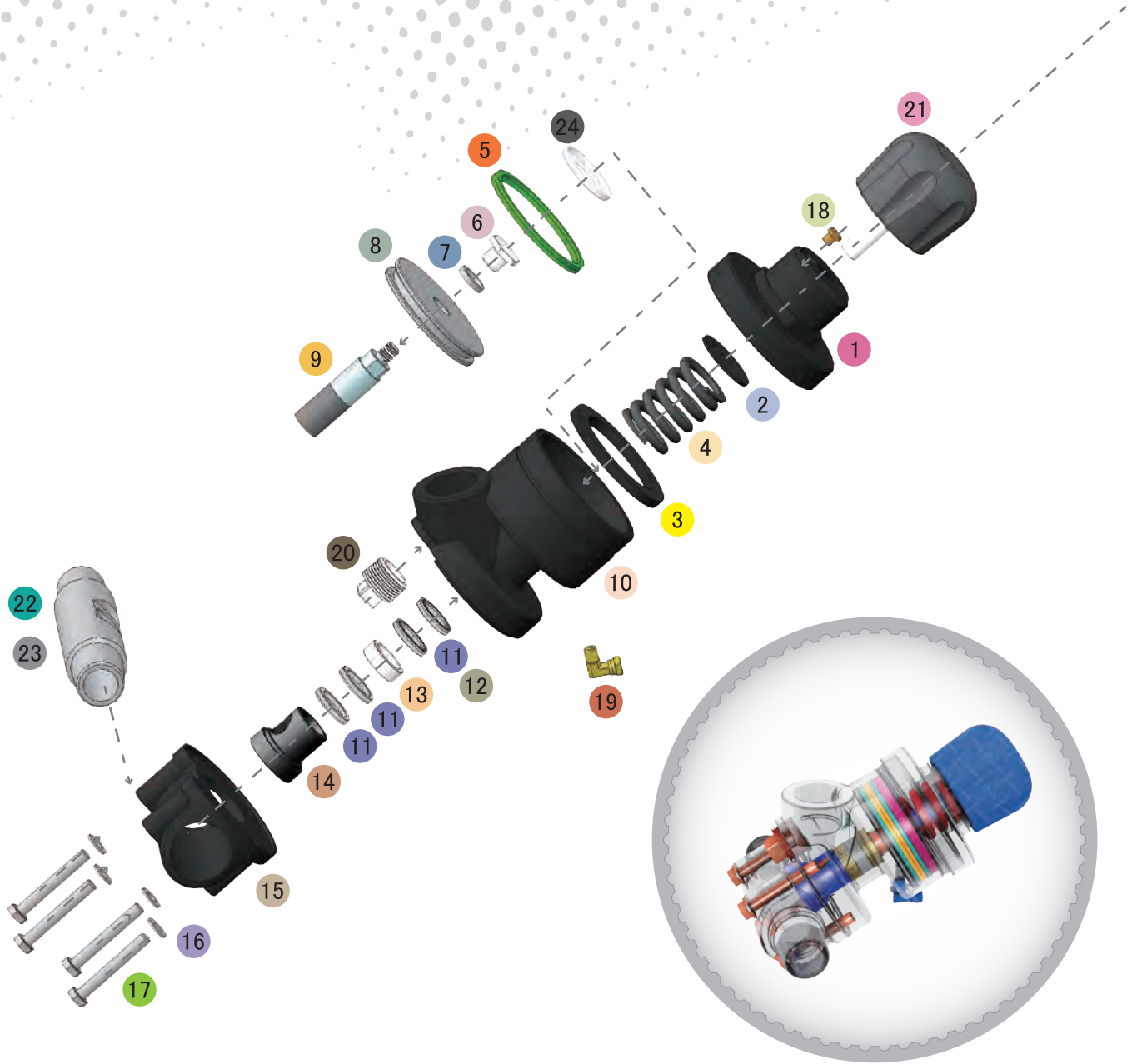
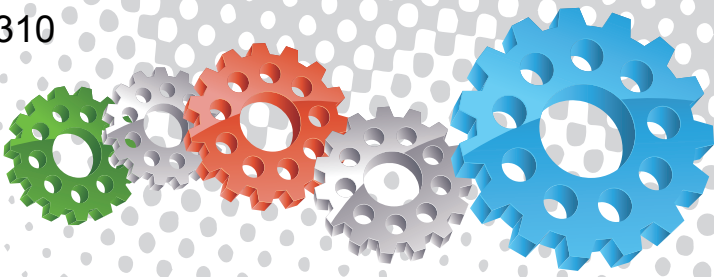
Stainless Steel Shot



Component Highlights



- | | | |
|---|-------------------------|--|
| 1 25 mm (1") Stainless Steel Clean Out Port | 6 Anti Vibration Washer | 11 Pilot Air Connector |
| 2 32 mm (1-1/4") Abrasive Feed Port | 7 Valve Spring | 12 Stainless Steel Bush |
| 3 Quad Plunger Seals | 8 Valve Stop Ring | 13 Urethane Sleeve |
| 4 Solid Tungsten Carbide Plunger | 9 Urethane Piston Seal | 14 Carburized Pipe Nipple 55HRC
32 mm (1-1/4") & 38 mm (1-1/2") |
| 5 Reinforced Nylon Control Knob | 10 Valve Piston | |



Assemblies

Stock Code	Description	Weight
BAC-VA-PB-0186	Corsa II NPT 1-1/4" With Urethane Sleeve	5.90 kg (12.98 lbs)
BAC-VA-PB-0191	Corsa II NPT 1-1/2" With Urethane Sleeve	6.10 kg (13.42 lbs)

Service Kits

Stock Code	Description	Include Items
BAC-VA-PB-0119	Corsa II Urethane Seal Kit	5 11 12 13 14
BAC-VA-PB-0139	Corsa II Piston Kit	2 3 4 5 6 7 8
BAC-VA-PB-0212	Corsa II NPT Valve Base Kit	15 16 17
BAC-VA-PB-0223	Corsa II NPT Urethane Sleeve Kit	5 11 12 14



Parts List



Description	Qty	Description	Qty	Description	Qty
1 Top	1	9 Tungsten Plunger	1	17 Hex Head Bolt	4
2 Anti-Vibration Washer	1	10 Corsa II Cylinder NPT	1	18 Exhaust Filter	1
3 Stop Ring	1	11 Plunger Seal	4	19 Elbow With Nut - NPT	1
4 Spring	1	12 O-ring	2	20 Plug - NPT - Stainless Steel	1
5 Piston Seal	1	13 Bush	1	21 Control Knob	1
6 Plunger Cover	1	14 Urethane Sleeve	1	22 Pipe Nipple 1-1/4" X 1-1/4" NPT (Applicable to valve BAC-VA-PB-0186)	1
7 Nylon Washer	1	15 Base - NPT	1	23 Pipe Nipple 1-1/2" X 1-1/2" NPT (Applicable to valve BAC-VA-PB-0191)	1
8 Piston	1	16 Flat Washer	4	24 Spring Seat	1



Corsa II NPT Valves With Tungsten Sleeve



Product Features

The PanBlast™ Corsa II valve is an improved, normally closed abrasive metering valve requiring a pilot air signal to permit abrasive flow. The valve may be used on both pressure hold blast pots and pressure release blast pots. The NPT version is intended for use with most US equipment and is available in various sizes and multiple configurations.

- ▶ Quick valve actuation.
- ▶ Anti-vibration washer.
- ▶ Exhaust filter prevents dust from entering air chamber.
- ▶ Tungsten carbide plunger and sleeve.
- ▶ Hardened connecting nipple.
- ▶ Piston travel stop nut.
- ▶ Improved plunger seat and piston design.
- ▶ Stainless steel internal parts.
- ▶ Clean out/drain port.
- ▶ Graduation markings.

Common Applications

- ▶ Pressure hold blast pots and multiple outlet blast pots.
- ▶ Pressure release blast pots, to prevent unwanted filling of blast hose.

Complementary Products



Couplings & Nozzle Holders



AirStop II Pneumatic Handle



Blast Nozzles



Plastic Media



Whip Check Cables



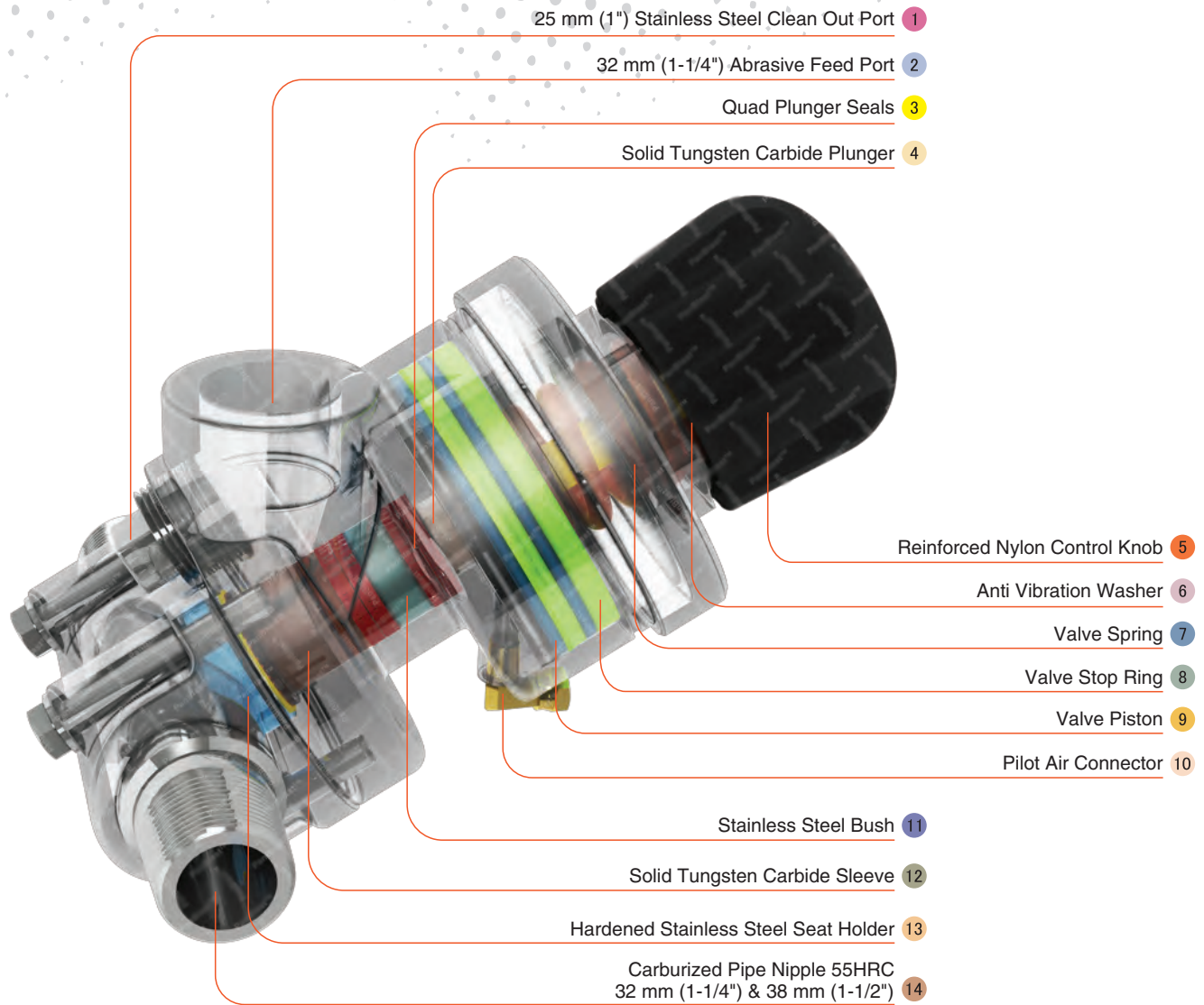
Steel Shot



Blast Hoses



Stainless Steel Shot



Component Highlights



1 25 mm (1") Stainless Steel Clean Out Port

6 Anti Vibration Washer

11 Stainless Steel Bush

2 32 mm (1-1/4") Abrasive Feed Port

7 Valve Spring

12 Solid Tungsten Carbide Sleeve

3 Quad Plunger Seals

8 Valve Stop Ring

13 Hardened Stainless Steel Seat Holder

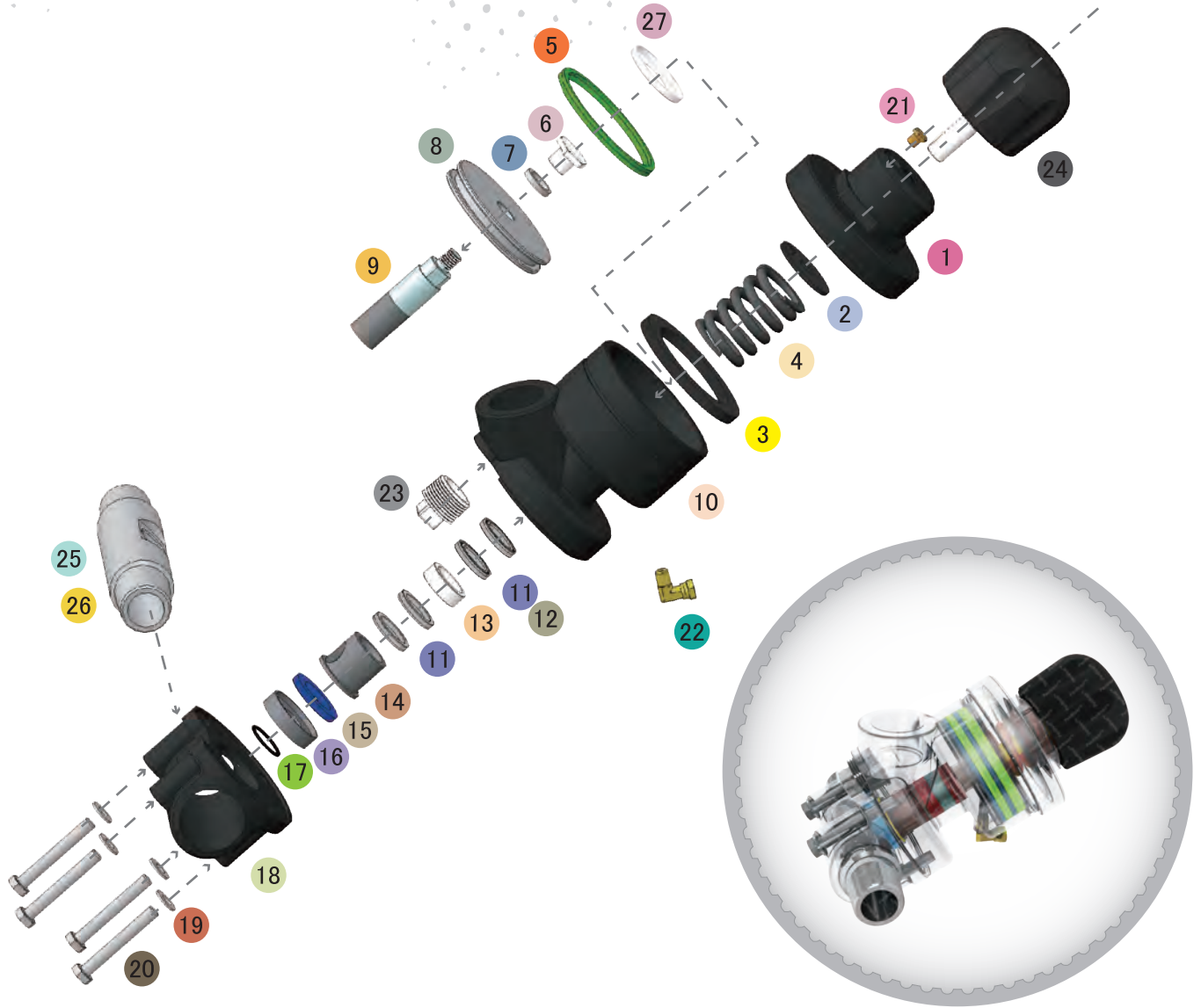
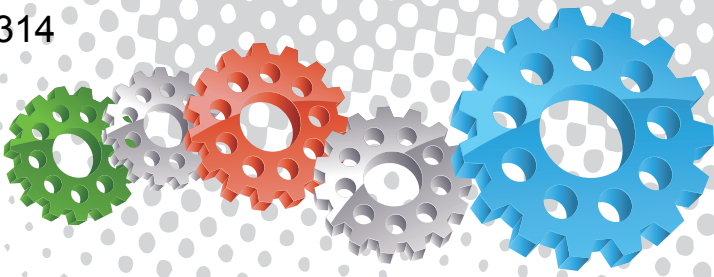
4 Solid Tungsten Carbide Plunger

9 Valve Piston

14 Carburized Pipe Nipple 55HRC
32 mm (1-1/4") & 38 mm (1-1/2")

5 Reinforced Nylon Control Knob

10 Pilot Air Connector



Assemblies

Stock Code	Description	Weight
BAC-VA-PB-0192	Corsa II NPT 1-1/4" With Tungsten Sleeve	6.20 kg (13.64 lbs)
BAC-VA-PB-0187	Corsa II NPT 1-1/2" With Tungsten Sleeve	6.40 kg (14.08 lbs)

Service Kits

Stock Code	Description	Include Items
BAC-VA-PB-0138	Corsa II Tungsten Seat Kit	15 16 17
BAC-VA-PB-0113	Corsa II Tungsten Seal Kit	5 11 12 13 14 15 16 17
BAC-VA-PB-0139	Corsa II Piston Kit	2 3 4 5 6 7 8
BAC-VA-PB-0212	Corsa II NPT Valve Base Kit	18 19 20
BAC-VA-0333-00	Corsa II Seal Kit - Soft	5 11 12 15 17



Parts List



Description	Qty	Description	Qty	Description	Qty
1 Top Cap NPT	1	10 Corsa II Cylinder NPT	1	19 Flat Washer	4
2 Anti Vibration Washer	1	11 Plunger Seal	4	20 Hex Head Bolt	4
3 Stop Ring	1	12 O-ring	2	21 Exhaust Filter	1
4 Spring	1	13 Bush	1	22 Elbow With Nut - NPT	1
5 Piston Seal	1	14 Tungsten Carbide Sleeve	1	23 Plug - NPT - Stainless Steel	1
6 Plunger Cover	1	15 Urethane Seat	1	24 Control Knob	1
7 Nylon Washer	1	16 Seat Holder	1	25 Pipe Nipple 1-1/4" X 1-1/4" NPT (Applicable to valve BAC-VA-PB-0192)	1
8 Piston	1	17 O-ring	1	26 Pipe Nipple 1-1/2" X 1-1/2" NPT (Applicable to valve BAC-VA-PB-0187)	1
9 Tungsten Plunger	1	18 Base - NPT	1	27 Spring Seat	1

Архангельск (8182)63-90-72
Астана (7172)727-132
Астрахань (8512)99-46-04
Барнаул (3852)73-04-60
Белгород (4722)40-23-64
Брянск (4832)59-03-52
Владивосток (423)249-28-31
Волгоград (844)278-03-48
Вологда (8172)26-41-59
Воронеж (473)204-51-73
Екатеринбург (343)384-55-89
Иваново (4932)77-34-06

Ижевск (3412)26-03-58
Иркутск (395)279-98-46
Казань (843)206-01-48
Калининград (4012)72-03-81
Калуга (4842)92-23-67
Кемерово (3842)65-04-62
Киров (8332)68-02-04
Краснодар (861)203-40-90
Красноярск (391)204-63-61
Курск (4712)77-13-04
Липецк (4742)52-20-81

Киргизия (996)312-96-26-47

Магнитогорск (3519)55-03-13
Москва (495)268-04-70
Мурманск (8152)59-64-93
Набережные Челны (8552)20-53-41
Нижний Новгород (831)429-08-12
Новокузнецк (3843)20-46-81
Новосибирск (383)227-86-73
Омск (3812)21-46-40
Орел (4862)44-53-42
Оренбург (3532)37-68-04
Пенза (8412)22-31-16

Россия (495)268-04-70

Пермь (342)205-81-47
Ростов-на-Дону (863)308-18-15
Рязань (4912)46-61-64
Самара (846)206-03-16
Санкт-Петербург (812)309-46-40
Саратов (845)249-38-78
Севастополь (8692)22-31-93
Симферополь (3652)67-13-56
Смоленск (4812)29-41-54
Сочи (862)225-72-31
Ставрополь (8652)20-65-13

Казахстан (772)734-952-31

Сургут (3462)77-98-35
Тверь (4822)63-31-35
Томск (3822)98-41-53
Тула (4872)74-02-29
Тюмень (3452)66-21-18
Ульяновск (8422)24-23-59
Уфа (347)229-48-12
Хабаровск (4212)92-98-04
Челябинск (351)202-03-61
Череповец (8202)49-02-64
Ярославль (4852)69-52-93

www.panblast.nt-rt.ru | | pav@nt-rt.ru